



# Installation Guide

eSATA 1.5Gbps 1 external + 1 internal port Low profile PCI card

GIC711SW6

PART NO. M0559



## Table of Contents

Introduction	4
Features	5
Package Contents	6
Software Installation	7
Federal Communications Commission (FCC) Statement	11
CE Statement	13
Limited Warranty	14
Contact	15

## Introduction

The Low Profile Serial ATA 2 Channel PCI Host Adapter can support both Low profile PCI and standard size PCI. It provides a 32bit, 33/66 MHz PCI interface on the host side and dual Serial ATA ports on the device side to access SATA storage media such as: hard disk drives, ZIP drives, CD-ROMs, CD-RWs and DVD-ROMs. The board supports 32-bit 33/66 MHz PCI bus revision 2.2 and has a Serial ATA transfer rate of 1.5 Gb/s.

## Features

### PCI Interface

- Compliant with PCI Specification, revision 2.2
- Integrated PCI DMA engines
- 32 bit, 33/66MHz fully compliant PCI host interface

### High Speed Serial ATA Interface

- Dual high speed Serial ATA interface Channels, each supporting 1st generation Serial ATA data rates (1.5Gb/s)
- Fully compliant with Serial ATA 1.0 specifications
- Supports Spread Spectrum in receiver
- Independent 256-byte FIFOs (32 bit \* 64 deep) per Serial ATA channel for host reads and writes

## Package Contents

- Low Profile Serial ATA 2 Channel PCI Host Adapter
- Low profile PCI bracket
- SATA cable
- Quick Start Guide
- Driver CD

## Software Installation

### Windows XP Driver Installation

1. Before installation, copy all the files under directory [CD Drive Letter]:\SATA Non-Raid\_2Port\ Sil3x12\ Win98\_me \_2000\_xp\_nt4.0\driver\ \*.\* to a blank floppy disk.
2. After the SATA PCI Host Adapter and attached drives are configured, follow Microsoft procedures to install Windows accordingly.
3. At the **Windows Set-up** screen, press **F6** in order to specify and add the driver.
4. Insert the Driver diskette. Press **S** then press **Enter**.
5. Select **Silicon Image Sil-3x12 SATALink Controller Driver** and press **Enter**.
6. Press **Enter** to continue and follow the on-screen instructions to complete Windows XP installation.  
Note: When the **Software Installation** warning pops up, click **Yes**. And when the **Hardware Installation** warning pops up, click **Yes** again.

## Add Windows XP Driver to Original Boot Device

1. When the **Found New Hardware Wizard** starts, check the option to **Install from a list or specific location (advanced)**, and click **Next**.



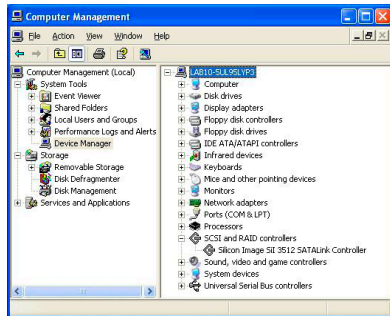


2. Insert the Driver CD. Point the wizard to the proper drive letter and click **Browse**.
3. Point the wizard to the following location:  
**[CD Drive Letter]:\SATA Non-Raid\_2Port\  
Sil3x12\ Win98\_me\_2000\_xp\_nt4.0 \  
Driver**, click **OK** then **Next**.
4. Once the drivers have been installed click **Finish** to finalize the installation.



## Verification of Proper Installation for Windows XP

1. Open **Device Manager**.
2. Double click **SCSI and RAID Controllers**, then double click **Silicon Image Sil-3x12 SATALink Controller** to display the driver properties.
3. If the message **This device is working properly** is displayed in the dialog box, then the driver has been correctly installed.



## Federal Communications Commission (FCC) Statement

Federal Communications Commission (FCC) Statement

15.21

You are cautioned that changes or modifications not expressly approved by the part responsible for compliance could void the user's authority to operate the equipment.

15.105(b)

This equipment has been tested and found to comply with the limits for a Class B digital device, pursuant to part 15 of the FCC rules. These limits are designed to provide reasonable protection against harmful interference in a residential installation. This equipment generates, uses and can radiate radio frequency energy and, if not installed and used in accordance with the instructions, may cause harmful interference to radio communications. However, there is no guarantee that interference will not occur in a particular installation. If this equipment does cause harmful interference to radio or television reception, which can be determined by turning the equipment off and on, the user is encouraged to try to correct the interference by one or more of the following measures:

- Reorient or relocate the receiving antenna.
- Increase the separation between the equipment and receiver.

- 
- Connect the equipment into an outlet on a circuit different from that to which the receiver is connected.
  - Consult the dealer or an experienced radio/TV technician for help.

THIS DEVICE COMPLIES WITH PART 15 OF THE FCC RULES. OPERATION IS SUBJECT TO THE FOLLOWING TWO CONDITIONS:

1. this device may not cause interference and
2. this device must accept any interference, including interference that may cause undesired operation of the device.

FCC RF Radiation Exposure Statement:

This equipment complies with FCC radiation exposure limits set forth for an uncontrolled environment. End users must follow the specific operating instructions for satisfying RF exposure compliance. This transmitter must not be co-located or operating in conjunction with any other antenna or transmitter.

## CE Statement

### CE Statement

This device has been tested and found to comply with the requirements set up in the council directive on the approximation of the law of member states relating to EMC Directive 89/336/EEC, Low Voltage Directive 73/23/EEC and R&TTE Directive 99/5/EC.

## Limited Warranty

The manufacturer, IOGEAR, makes NO warranty or representation, whether express or implied, regarding the contents, use or suitability of this software, disk or documentation. IOGEAR specifically disclaims any and all warranties regarding the quality and performance of this software, disk or documentation including, but not limited to the implied warranty of merchantability and implied warranty of fitness for a particular purpose. IOGEAR shall not be responsible or liable for property damage, loss of use, interruption of business, lost profits, lost data or other consequential, punitive or special damages, however caused and however alleged.

IOGEAR reserves the right to revise or update the software, disk or documentation without advance notification of such revision or update. For additional information please contact IOGEAR at:

Email – [support@iogear.com](mailto:support@iogear.com), Telephone - 949-453-8782 or toll free 866-9-IOGEAR, or

Fax - 949-453-8785.

## Contact

Toll Free: (866) 9-IOGEAR

Phone: (949) 453-8782

23 Hubble

Irvine, CA 92618 USA

[www.iogear.com](http://www.iogear.com)

[support@iogear.com](mailto:support@iogear.com)



## About Us



### FUN

IOGEAR offers connectivity solutions that are innovative, fun, and stylish, helping people enjoy daily life using our high technology products.



### GREEN

IOGEAR is an environmentally conscious company that emphasizes the importance of conserving natural resources. The use of our technology solutions helps reduce electronic waste.



### HEALTH

IOGEAR supports healthy and fit lifestyles. By integrating products with the latest scientific developments, IOGEAR's solutions enhance the life of end-users.

© 2007 IOGEAR, INC.



## Free Manuals Download Website

<http://myh66.com>

<http://usermanuals.us>

<http://www.somanuals.com>

<http://www.4manuals.cc>

<http://www.manual-lib.com>

<http://www.404manual.com>

<http://www.luxmanual.com>

<http://aubethermostatmanual.com>

Golf course search by state

<http://golfingnear.com>

Email search by domain

<http://emailbydomain.com>

Auto manuals search

<http://auto.somanuals.com>

TV manuals search

<http://tv.somanuals.com>