

USB Print Server

User Manual (GMFPSU01)



Thank you for purchasing this 1-port USB Print Server that allows any networked computer to share a USB printer. It complies with USB 1.1 specifications, and provides users with an auto-sensing 10/100Base-T port. It works with either 10BaseT or 100BaseT networks. The built-in web management feature provides more convenience by allowing the user to configure, monitor and even reset the print server via a web browser. This eliminates the need to place the printer right next to the computer.

We hope that you will enjoy using your Print Server and find it to be a useful solution.

©2006 IOGEAR. All Rights Reserved. PKG-M0319

IOGEAR, the IOGEAR logo, MiniView, VSE are trademarks or registered trademarks of IOGEAR, Inc. Microsoft and Windows are registered trademarks of Microsoft Corporation. IBM is a registered trademark of International Business Machines, Inc. Macintosh, G3/G4 and iMac are registered trademarks of Apple Computer, Inc. IOGEAR makes no warranty of any kind with regards to the information presented in this document. All information furnished here is for informational purposes only and is subject to change without notice. IOGEAR, Inc. assumes no responsibility for any inaccuracies or errors that may appear in this document.

Table of Contents

Package Contents	05
Features	06
System Requirements	07
Introduction	08
Hardware Setup	09
Software Installation	10
Software Configuration	22
Web Administration	33
Technical Support	41
Limited Warranty	42

Package Contents

This package contains:

- 1 USB Multi-Function Print Server
- 1 CAT5 patch cable
- 1 User manual
- 1 Installation CD
- 1 Warranty/registration card
- 1 Power adapter

* If any items are damaged or missing, please contact your dealer.

Features

- Allows multiple users to share a Multi-Function Printer (MFP) over the network to Print, Scan, and Fax from any networked computer
- Print text documents and color photos without compromising quality
- Fax documents over the network and at the convenience of your desk without the clutter
- Scan documents or photos in high-resolution color format
- One USB port compliant with USB 1.1 specification
- One network port for support of 10/100Base-T networks
- Web interface allows for easy configuration and monitoring
- Firmware upgradeable via web interface

System Requirements

This USB print server supports:

- Windows 2000/XP
- Printer with USB connection

Introduction

IOGEAR's palm-sized USB Multi-Function Print Server allows any networked computer to share a USB Multi-Function Printer (MFP). This multi-function server goes a step beyond ordinary print servers by allowing multiple network users to Print, Scan, and Fax using the same Multi-Function Printer. This eliminates the need to purchase multiple expensive MFPs as all you need to share the printer is a connection to the print server's network port.

It complies with USB 1.1 specifications, and provides users with an auto-sensing 10/100Base-T port. The print server will even automatically identify your printer make/model upon connection. The built-in web management feature provides more convenience by allowing the user to configure, monitor and even reset the print server via a web browser.

Hardware Setup

- 1) Plug the included power adapter into the print server and a power outlet near the multifunction printer.
- 2) Plug the network port of the print server into a network switch or available LAN port on a router using standard Ethernet patch cable.
- 3) Plug the USB cable from your multifunction printer into the USB port on the print server and make sure the printer is powered on.

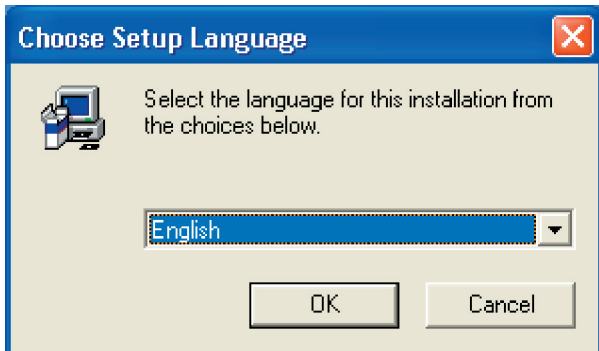
Software Installation

Software Installation (repeat on each networked computer)

- 1) Insert the Setup CD into your computer.
- 2) Click the **Installation** button on the window that opens.

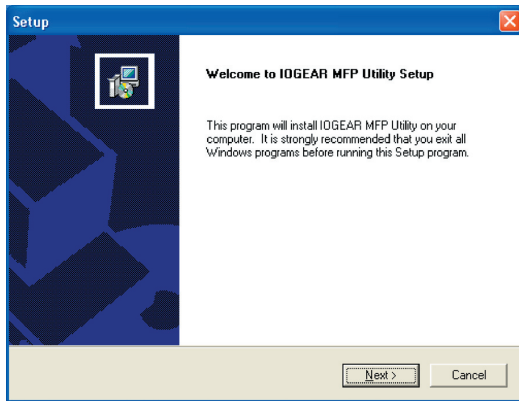


- 3) Choose a language to use for installation and click **OK**.

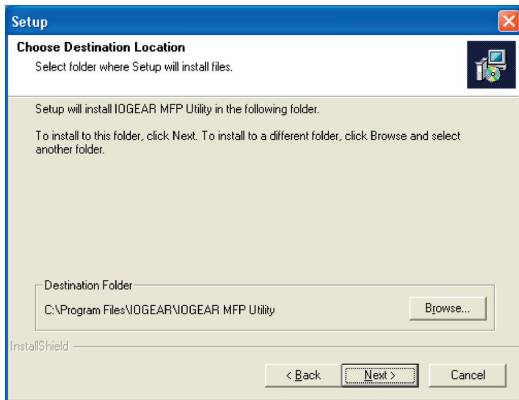


Software Installation

- 4) Click **Next** at the first screen of the setup wizard.

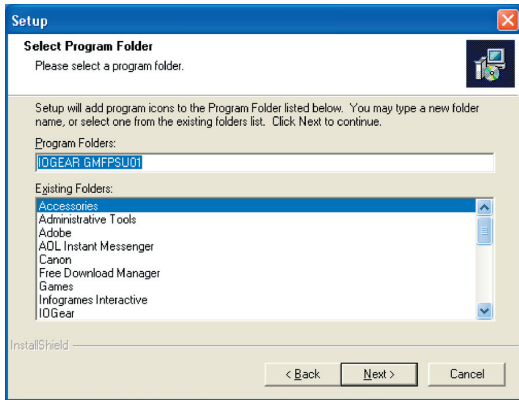


- 5) Choose a folder to install the print server software or just click **Next**.



Software Installation

- 6) Choose a folder in the start menu to launch the software from or just click **Next**.



- 7) On Windows XP, a window may come up warning you that this software has not been tested by Microsoft and certified by their Windows Logo program. If so, simply click **Continue Anyway** to continue with installation.

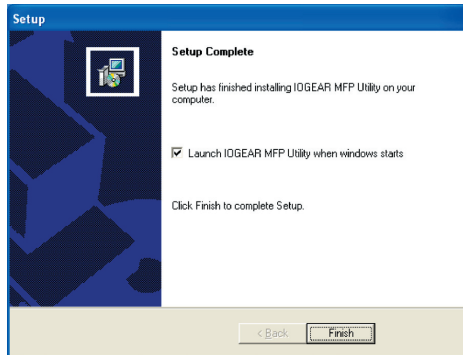


Software Installation

8) When the installation is complete, click **OK**.



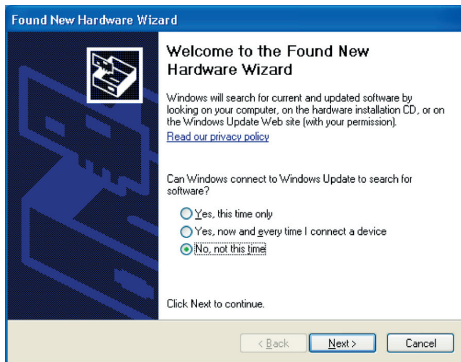
- 9) If you would like the print server software to run automatically when starting your computer (recommended), leave the box checked and click **Finish**.



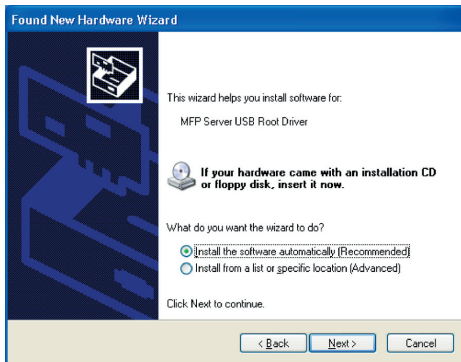
Software Installation

On Windows XP systems, the Found New Hardware wizard may pop up during installation. You will need to do the following to complete the driver installation:

- 1) If asked if Windows can connect to the internet to search for software, click the **No, not this time** option and then click **Next**.



- 2) When asked how the wizard should install software, leave **Install the software automatically** selected and click **Next**.

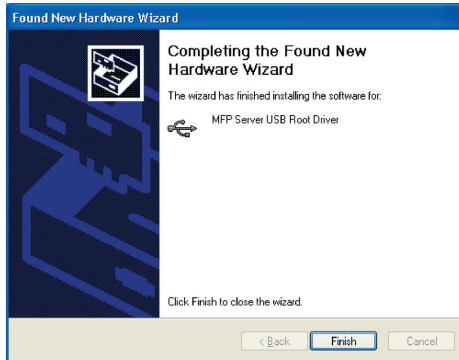


Software Installation

- 3) If you see another warning that the software has not been Windows Logo certified by Microsoft, click **Continue Anyway**.



- 4) Click **Finish** to complete the Found New Hardware wizard.



Software Configuration

Software Configuration (repeat on each networked computer)

- 1) Launch the IOGear MFP Utility program from the start menu or icon on the desktop.



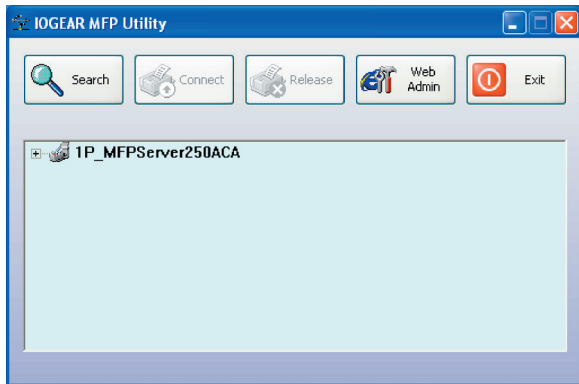
Software Configuration

- 2) If you have Windows XP and the Windows Firewall is enabled you will see this window pop up when the Utility is first launched. Make sure you click the **Unblock** button to allow communication with the print server. Other software firewalls may display similar options – make sure the print server software is allowed to bypass such programs.

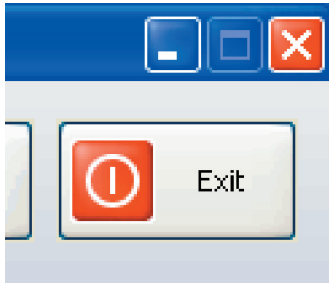


Software Configuration

- 3) The Utility will search your network for the print server and display it in the window. If no print server is found please make sure any third party firewalls such as Norton Internet Security, McAfee Personal Firewall, or ZoneAlarm have been disabled or bypassed and click the **Search** button to try again.

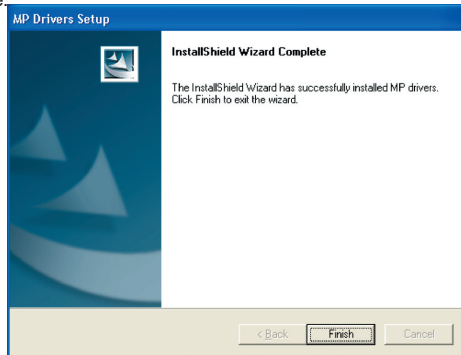


- 4) If your printer software has already been installed, skip ahead to step 7. Otherwise, once the print server has been found, close the window with the X button in the top right corner (**NOT** the one labeled **Exit**) to hide the Utility for now.



Software Configuration

- 5) Install the software that came with your printer. When the drivers for the printer have finished installing **OR** the software asks you to plug in the printer using a USB cable, you are ready to “connect” the device.

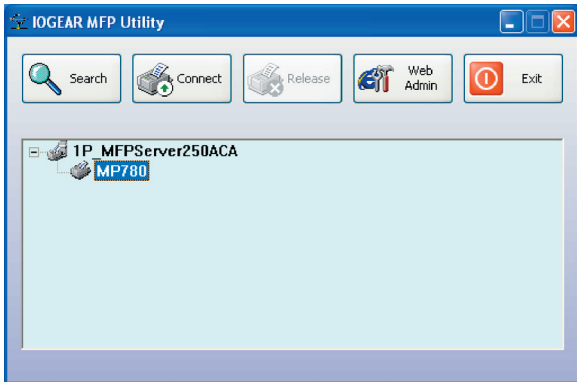


- 6) You should see a small USB icon like this in the tray in the lower right corner of your screen. Double-click on the icon to open the Utility window again.

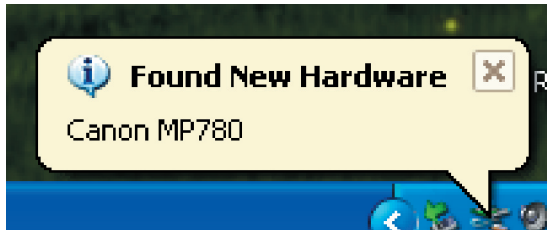


Software Configuration

- 7) Click the plus in front of the print server name to show the name of the attached printer. Then select the printer name and click the **Connect** button in the Utility.

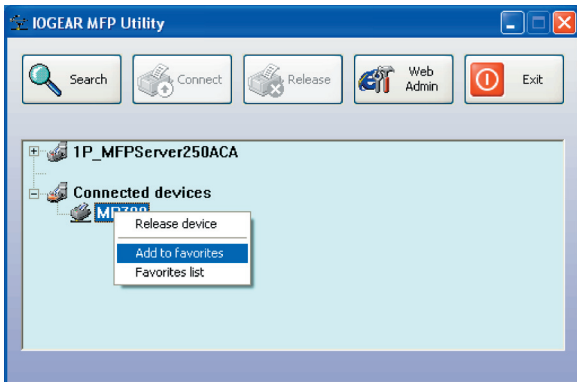


- 8) The printer should be detected as if it was plugged directly into the computer. Finish any remaining setup needed by the printer software. Your multifunction printer should be ready to use.

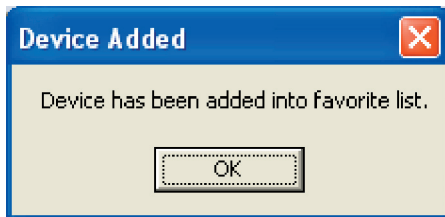


Software Configuration

9) If you would like the connection to this printer to be restored automatically when the Utility software launches, you will need to add the device to your favorites list. Click the plus in front of **Connected devices** and right-click the name of the printer. Choose **Add to favorites** from the menu that pops up.

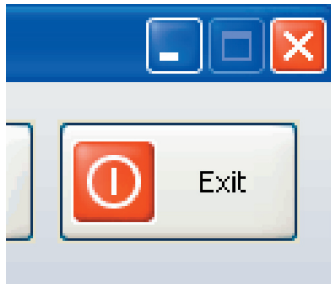


10) Click **OK** to confirm that the printer is in your favorites list.



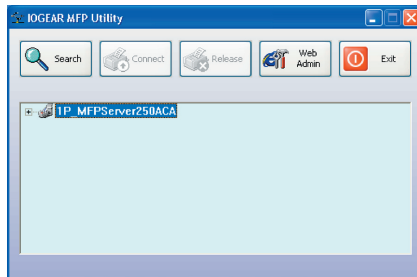
Software Configuration

- 11) Once you have connected to the print server you can close the Utility window. Be sure to use the close box with an X in the top right corner so that the Utility continues to run in the background. The large button labeled Exit will shut down the Utility and disconnect your computer from the printer.



Web Administration (advanced options)

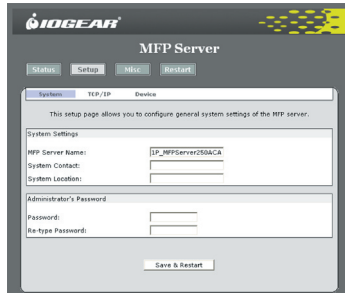
Normally you will not need to change the name or IP address used by the print server. However, if you have multiple print servers or want to override these default settings for another reason, you may do so using the Web Administration tool. This tool may also be used to upgrade the firmware on your print server, which may be needed if your printer model is very new. Simply select the server from the MFP Utility and click the **Web Admin** button. Internet Explorer will launch and connect to the built-in web interface on your print server.



Web Administration

Changing the print server name

The default name may not be convenient if you have multiple print servers. If you would like to change the print server's name to something more meaningful such as "Front Office" or "Accounting Scanner" you can do so with the Web Admin tool. First click the **Setup** button, then make sure the **System** tab is selected.

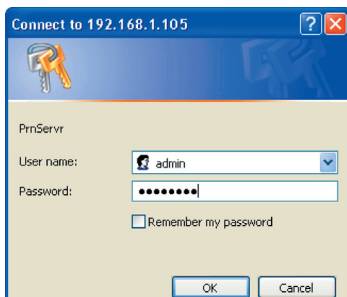


The screenshot shows the IOGEAR MFP Server Web Admin interface. At the top, there is a navigation bar with buttons for Status, Setup, Misc, and Restart. Below this, there are three tabs: System (selected), TCP/IP, and Device. The main content area is titled "MFP Server" and contains a sub-header "System Settings". Under "System Settings", there are three input fields: "MFP Server Name" (containing "IP_MFPServer250&CA"), "System Contact", and "System Location". Below these is the "Administrator's Password" section with "Password:" and "Re-type Password:" fields. At the bottom of the form is a "Save & Restart" button.

Here you can type in whatever name you like for the print server, click Save & Restart, and future searches with the MFP Utility will identify the server with its new name.

Protecting the Admin tool with a password

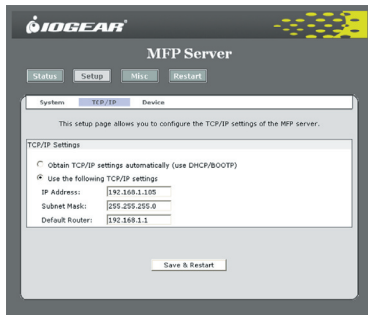
If you would like to prevent unauthorized access to the Admin tool, you can establish a password from the same **System** tab of the **Setup** section shown above. Type in your password twice to confirm it, then click Save & Restart. When the server reboots, and for all future access to the Admin tool, you will be prompted for a username and password. Type “admin” for the username and then the password you created to proceed to the Web Admin tool.



Web Administration

Changing the IP address

Normally the server requests an IP address automatically from your router or other DHCP server on the network. If you would prefer to specify an address, you can do so by clicking the **Setup** button, then on the **TCP/IP** tab.



The screenshot shows the IOGEAR MFP Server web administration interface. At the top, there is a navigation bar with buttons for 'Status', 'Setup', 'Misc', and 'Restart'. Below this, there are tabs for 'System', 'TCP/IP', and 'Device', with 'TCP/IP' currently selected. The main content area contains the following text and form:

This setup page allows you to configure the TCP/IP settings of the MFP server.

TCP/IP Settings

Obtain TCP/IP settings automatically (use DHCP/BOOTP)

Use the following TCP/IP settings

IP Address:

Subnet Mask:

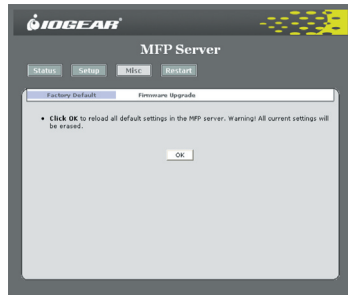
Default Router:

At the bottom of the form is a 'Save & Restart' button.

Make sure the network settings you enter are valid, or the print server may become inaccessible. When you are sure everything is correct, click **Save & Restart** to apply the changes.

Restoring factory default settings

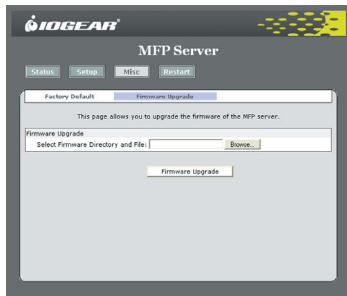
If you would like to restore all settings on the print server to their original configuration and can still access the Web Admin tool, simply click on the **Misc** button and make sure the **Factory Default** tab is selected. Clicking **OK** will immediately reset all options to their defaults and reboot the print server.



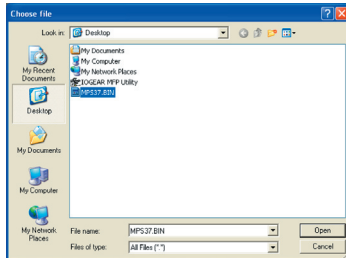
Web Administration

Upgrading the firmware

In some cases, a firmware upgrade may be necessary to get the full functionality of your MFP device, especially if you have a brand new model. If you are experiencing any compatibility issues please check the Support section of the IOGEAR website at <http://www.iogear.com> for firmware upgrade files. Download the latest version to your computer and make sure that you unzip it if necessary. The file name should end in ".BIN" when you are done. Then click the **Misc** button in the Web Admin tool. Click **Firmware Upgrade** and you should see the following page:

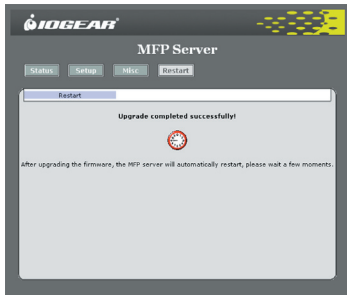


Click the **Browse** button and you will be asked to locate the firmware upgrade file you just downloaded. Select it and click **Open**.



Web Administration

You will see the location you selected in the box next to the **Browse** button. Click the button at the bottom labeled **Firmware Upgrade** to load the new firmware onto the server.



Technical Support

If you need technical support, please check out our IOGEAR Tech Info Library (T.I.L.) at www.iogear.com/support for the latest tips, tricks, and troubleshooting. The IOGEAR T.I.L. was designed to provide you with the latest technical information about our products. Most of the answers to your questions can be found here, so please try it out before contacting technical support.

Technical support is available Monday through Friday from 8:00 am to 5:00 pm PST and can be reached at 866-9-IOGEAR or 866-946-4327

Limited Warranty

IN NO EVENT SHALL THE DIRECT VENDOR'S LIABILITY FOR DIRECT, INDIRECT, SPECIAL, INCIDENTAL OR CONSEQUENTIAL DAMAGES RESULTING FROM THE USE OF THE PRODUCT, DISK OR ITS DOCUMENTATION EXCEED THE PRICE PAID FOR THE PRODUCT.

The direct vendor makes no warranty or representation, expressed, implied, or statutory with respect to the contents or use of this documentation, and especially disclaims its quality, performance, merchantability, or fitness for any particular purpose.

The direct vendor also reserves the right to revise or update the device or documentation without obligation to notify any individual or entity of such revisions, or updates. For further inquires please contact your direct vendor.



Contact Info.

Hubble • Irvine, CA 92618 • (P) 949.453.8782 • (F) 949.453.8785 • www.iogear.com

Download from Www.Somanuals.com. All Manuals Search And Download.

Free Manuals Download Website

<http://myh66.com>

<http://usermanuals.us>

<http://www.somanuals.com>

<http://www.4manuals.cc>

<http://www.manual-lib.com>

<http://www.404manual.com>

<http://www.luxmanual.com>

<http://aubethermostatmanual.com>

Golf course search by state

<http://golfingnear.com>

Email search by domain

<http://emailbydomain.com>

Auto manuals search

<http://auto.somanuals.com>

TV manuals search

<http://tv.somanuals.com>