



Installation Guide

eSATA 3Gbps Dual ports Express Card/34 Host

GPS702e3W6
PART NO. M0554

Download from [Www.Somanuals.com](http://www.Somanuals.com). All Manuals Search And Download.



Table of Contents

Introduction	4
Features	5
Package Contents	6
Software Installation	7
Federal Communications Commission (FCC) Statement	10
CE Statement	12
Limited Warranty	13
Contact	14

Introduction

The ExpressCard Host allows you to upgrade your Notebook computer with up to two SATA II Channels. The board provides a 2.5Gbps ExpressCard interface on the host side, and dual fully compliant SATA II 3Gbps ports on the device side to access Serial ATA mobile external and internal storage devices such as: hard drives, ZIP drives, CD-ROMs, CD-RWs and DVD-ROM drives.

Features

- External SATA II (eSATA) Connector
- 48 bits LBA can Break Capacity-Limit to Support HDD larger than 137GB
- Supports 1-lane 2.5Gbps ExpressCard/34
- Hot-plug capability
- Supports SATA II transfer rate of 3.0Gbps
- Fully compliant with Serial ATA 1.0 specifications
- Supports two independent Serial ATA channels
- Independent Link, Transport, and data FIFO
- Independent command fetch, scatter/gather, and command execution
- Supports Legacy Command Queuing (LCQ)
- Supports Native Command Queuing (NCQ)
- Supports Non-zero offsets NCQ
- Supports Out of order data delivery NCQ
- Supports FIS-based switching with Port Multipliers
- 31 Commands and Scatter/Gather Tables per Port
- Two LEDs indicate for HDD access
- Completely with drivers for Windows NT, Windows 2000, Windows XP, Windows Vista and Windows Server 2003

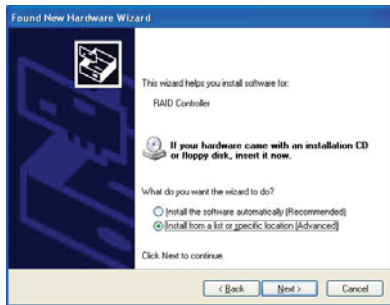
Package Contents

- SATA ExpressCard Host Adapter
- Quick Start Guide
- Driver CD

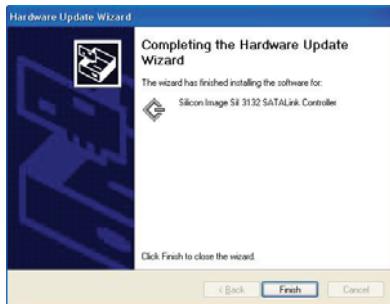
Software Installation

Windows XP Installation

1. Insert the SATA Card into an available slot.
Connect the serial ATA cable(s) between the SATA port and serial ATA device(s).
2. Windows will display the '**Found New Hardware Wizard**'. A new '**Mass Storage controller**' will become detected.
3. Insert the Driver CD into your CD-ROM/DVD Drive.
4. Select "**Install from a list or specific location (Advanced)**", and click "**Next**".

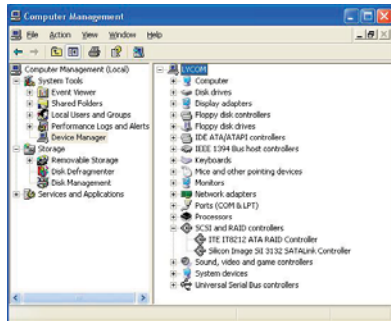


5. Select “**Search for the best driver in these locations**”, and check “**Include this location in the search:**” Be sure to uncheck the other available boxes.
6. Type the appropriate media drive letter and select the “**Browse**” option.
7. Specify a location [CD Drive Letter]:\SATA Express_2Port \Sil3132 \WinXP_2000_2003_NT, and click **OPEN** then select **OK**.
8. When the wizard indicates that it found a driver for the device click ‘**Next**’.
9. The wizard will now copy the required files to the system and initialize the Driver. After starting the driver the wizard will display a completion dialog, click ‘**Finish**’ to exit the wizard.



Verify Windows XP Installation

1. Right click on the 'My Computer' icon, select 'Properties', left click on the 'Hardware' tab, and select the 'Device Manager' button.
2. Double click on 'SCSI and RAID Controllers', If there is no yellow '!' or '?' in front of 'Silicon Image Sil 3132 SATALink Controller', the driver is functioning properly.



Federal Communications Commission (FCC) Statement

Federal Communications Commission (FCC) Statement


15.21

You are cautioned that changes or modifications not expressly approved by the part responsible for compliance could void the user's authority to operate the equipment.

15.105(b)

This equipment has been tested and found to comply with the limits for a Class B digital device, pursuant to part 15 of the FCC rules. These limits are designed to provide reasonable protection against harmful interference in a residential installation. This equipment generates, uses and can radiate radio frequency energy and, if not installed and used in accordance with the instructions, may cause harmful interference to radio communications. However, there is no guarantee that interference will not occur in a particular installation. If this equipment does cause harmful interference to radio or television reception, which can be determined by turning the equipment off and on, the user is encouraged to try to correct the interference by one or more of the following measures:

- Reorient or relocate the receiving antenna.
- Increase the separation between the equipment and receiver.

- 
- Connect the equipment into an outlet on a circuit different from that to which the receiver is connected.
 - Consult the dealer or an experienced radio/TV technician for help.

THIS DEVICE COMPLIES WITH PART 15 OF THE FCC RULES. OPERATION IS SUBJECT TO THE FOLLOWING TWO CONDITIONS:

1. this device may not cause interference and
2. this device must accept any interference, including interference that may cause undesired operation of the device.

FCC RF Radiation Exposure Statement:

This equipment complies with FCC radiation exposure limits set forth for an uncontrolled environment. End users must follow the specific operating instructions for satisfying RF exposure compliance. This transmitter must not be co-located or operating in conjunction with any other antenna or transmitter.

CE Statement

CE Statement

This device has been tested and found to comply with the requirements set up in the council directive on the approximation of the law of member states relating to EMC Directive 89/336/EEC, Low Voltage Directive 73/23/EEC and R&TTE Directive 99/5/EC.

Limited Warranty

The manufacturer, IOGEAR, makes NO warranty or representation, whether express or implied, regarding the contents, use or suitability of this software, disk or documentation. IOGEAR specifically disclaims any and all warranties regarding the quality and performance of this software, disk or documentation including, but not limited to the implied warranty of merchantability and implied warranty of fitness for a particular purpose. IOGEAR shall not be responsible or liable for property damage, loss of use, interruption of business, lost profits, lost data or other consequential, punitive or special damages, however caused and however alleged.

IOGEAR reserves the right to revise or update the software, disk or documentation without advance notification of such revision or update. For additional information please contact IOGEAR at:

Email – support@iogear.com, Telephone - 949-453-8782 or toll free 866-9-IOGEAR, or

Fax - 949-453-8785.

Contact

Toll Free: (866) 9-IOGEAR

Phone: (949) 453-8782

23 Hubble

Irvine, CA 92618 USA

www.iogear.com

support@iogear.com





About Us



FUN

IOGEAR offers connectivity solutions that are innovative, fun, and stylish, helping people enjoy daily life using our high technology products.



GREEN

IOGEAR is an environmentally conscious company that emphasizes the importance of conserving natural resources. The use of our technology solutions helps reduce electronic waste.



HEALTH

IOGEAR supports healthy and fit lifestyles. By integrating products with the latest scientific developments, IOGEAR's solutions enhance the life of end-users.

© 2007 IOGEAR, INC.

Free Manuals Download Website

<http://myh66.com>

<http://usermanuals.us>

<http://www.somanuals.com>

<http://www.4manuals.cc>

<http://www.manual-lib.com>

<http://www.404manual.com>

<http://www.luxmanual.com>

<http://aubethermostatmanual.com>

Golf course search by state

<http://golfingnear.com>

Email search by domain

<http://emailbydomain.com>

Auto manuals search

<http://auto.somanuals.com>

TV manuals search

<http://tv.somanuals.com>