

Congratulations on your purchase of a high-quality Insignia product. Your GPS is designed for reliable and trouble-free performance. Use this guide for initial setup. See your *User Guide* for more information.

Package contents

- 4.3" GPS
- DC power adapter
- Mounting bracket
- Mounting cradle
- SD memory card
- User Guide
- Quick Setup Guide

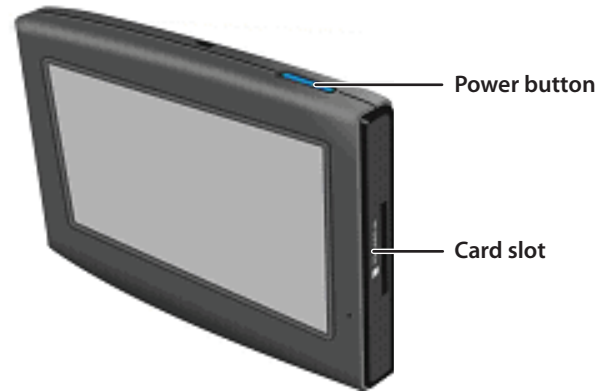
Setting up your GPS

Charging the battery

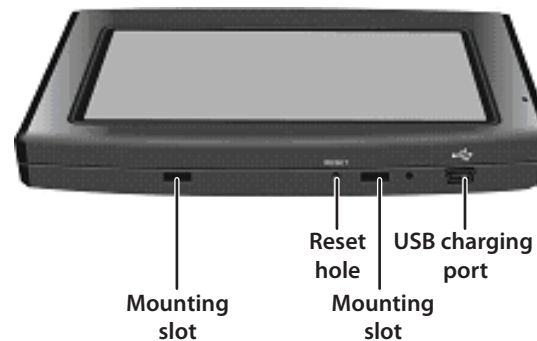
Your portable GPS comes with a built-in rechargeable battery. Fully charge the battery before using the GPS for the first time. Charging time is normally about three hours. A fully charged battery delivers about two hours of use. See "Connecting power to your GPS" below.

Features

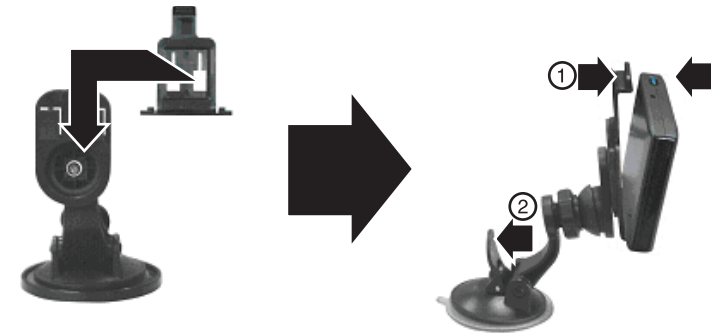
Top and side panels



Bottom panel



Actual product may vary from image shown.



Mounting your GPS in a car

WARNING: The assembly must not be mounted so that it impairs the driver's view of the road.

Make sure that your car's airbags are not obstructed by the GPS.

Use the supplied mounting bracket and cradle to mount your GPS in a vehicle.

- 1 Slide the mount cradle onto the end of the mounting bracket to attach it.
- 2 Set the bottom edge of your GPS onto the mount cradle, then push the GPS into the tab (1) at the top of the mount cradle.
To remove the GPS, lift the tab (1) at the top of the mount cradle and pull the GPS forward.
- 3 Lift the suction cup lever (2) and then press the suction cup to the windshield.
- 4 Press the suction cup lever toward the windshield to attach the bracket to the windshield.
- 5 Rotate the knob to adjust the assembly to the proper position.

Connecting power to your GPS

Connecting DC power

CAUTION: Disconnect the GPS from the DC power adapter when starting the vehicle.

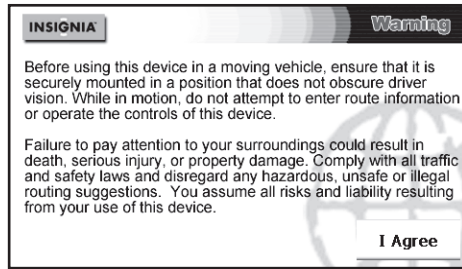
- Connect the DC power adapter plug to the GPS's USB port, then plug the other end to the vehicle's 12-24V DC accessory socket (cigarette lighter socket).



Getting started

Using your GPS

- 1 Turn on the GPS. When you turn it on for the first time, the *Time zone* screen opens.
- 2 Touch the time zone where you are currently located, then touch **OK**. A splash screen appears for a few seconds, then the safety *Warning* appears.
- 3 To continue on to the device features, touch **I Agree** at the bottom right of the screen. The *Home* screen appears.



Using the Home screen

From the Home screen, you can see where you are, find a route to a place of interest, or change settings.

- To see where you are, touch **Map**

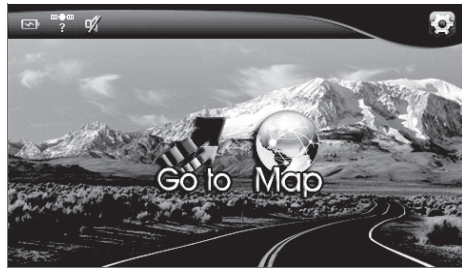
- OR -

To find a route:

- 1 Touch **Go to**. The *Main menu* opens.
- 2 Touch **Address**. A keypad opens.
- 3 Enter an address. The GPS automatically calculates the best route choice to direct you to that address.

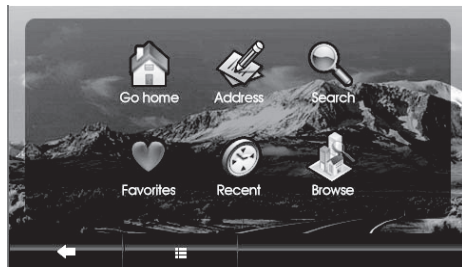
See *Creating a route to an address* in your *User Guide* for more detailed instructions.

- To change settings, touch the settings icon at the top right corner of the screen. To learn more about these settings, see *Setting up your GPS device preferences* in your *User Guide*.



Using the Main menu

- **Go home** — touch to calculate a route to your home address from wherever you are. To learn more about setting your home address, see your *User Guide*.
- **Address** — touch to navigate to an address or intersection near the address.
- **Search** — touch to enter locations or points of interest for directions to restaurants, theaters, public services, and more.
- **Favorites** — touch to get directions from your location to places you have saved as Favorites.
- **Recent** — touch to navigate to your most recent destinations without having to enter them again.
- **Browse** — touch to search categories, including gas, restaurants, and other points of interest.



Creating a route to an address

1 Touch **Go to** on the *Home* screen. The *Main menu* opens.

2 Touch **Address** on the *Main menu*. The city in which you are located is displayed, along with cities to which you have recently navigated. If this is the first time you are using the GPS, only the name of the city of your current GPS location is shown.

3 Touch the name of the city to which you want to navigate.

The *Enter House number* keypad opens.

- OR -

To go to a city that is not listed, touch **Other city** to open the *Enter City name* keypad, then enter the name of the city you want and touch **Next**.

The *Enter House number* keypad opens.

4 Enter the house number, then touch **Next**. The *Enter Street Name* keypad opens.

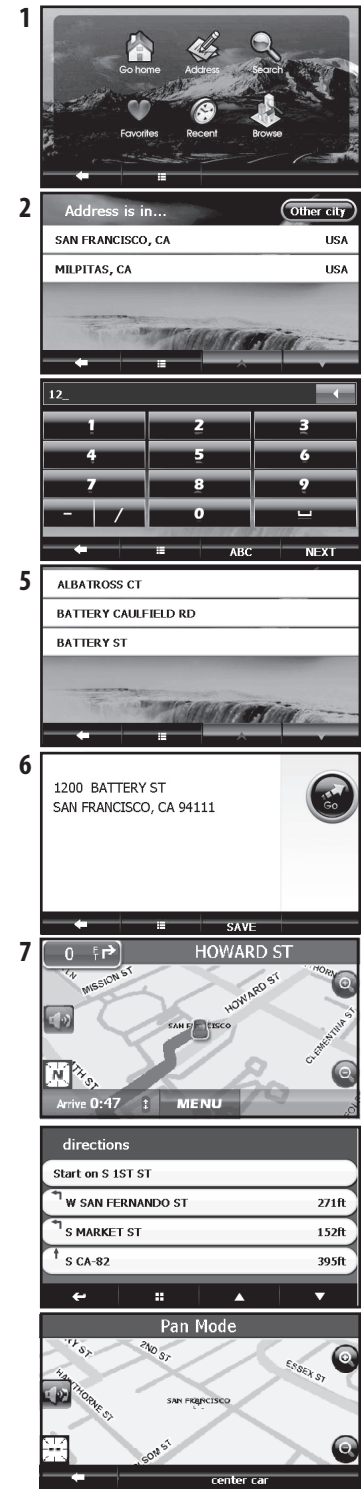
5 Enter the name of the street. After entering a few characters, the GPS displays a list of street names that include those characters.

6 Touch the street name you want. If the street name is not on the list, touch the back arrow and re-enter the street name, then touch **Next**.

The address card for your destination opens.

7 Touch **Go**. The GPS calculates your route. When the calculation is complete, the route is highlighted on the map view and the voice prompts begin.

- To view the turn-by-turn maneuvers, touch the distance to next maneuver button at the top left of the map view.
- To zoom in, touch the + button on the right side of the screen.
- To zoom out, touch the - button on the side of the screen.
- To pan across the map and view portions that are beyond the limits of the screen, touch the map and drag your finger. When you do this, the GPS displays "Pan Mode" at the top of the screen.
- To return to your last known location from Pan Mode, touch **center car** at the bottom of the screen.
- To return to the Map view, touch the back arrow at the bottom left of the screen.



Free Manuals Download Website

<http://myh66.com>

<http://usermanuals.us>

<http://www.somanuals.com>

<http://www.4manuals.cc>

<http://www.manual-lib.com>

<http://www.404manual.com>

<http://www.luxmanual.com>

<http://aubethermostatmanual.com>

Golf course search by state

<http://golfingnear.com>

Email search by domain

<http://emailbydomain.com>

Auto manuals search

<http://auto.somanuals.com>

TV manuals search

<http://tv.somanuals.com>