

INSIGNIA™

USB Bluetooth Adapter

NS-PCY5BMA/NS-PCY5BMA-C

Before using your new product, please read these instructions to prevent any damage.

Insignia USB Bluetooth Adapter

Contents

Introduction	1
Features	1
Package contents	1
System requirements	1
Windows® 8.1 or Windows® 8	2
Installing the software	2
Manually adding the Bluetooth icon to the task bar	2
Adding or removing a device	3
Using the right-click menu	4
Managing Bluetooth connections and settings	5
Windows® 7 or Windows Vista®	7
Installing the software	7
Adding a device in Windows 7	7
Removing a device in Windows 7	8
Using the right-click menu in Windows 7	8
Adding a device in Windows Vista	9
Removing a device in Windows Vista	9
Using the right-click menu in Windows Vista	10
Managing Bluetooth connections and settings in Windows 7 or Windows Vista	10
Uninstalling the software	13
Windows 8.1 or Windows 8	13
Windows 7 or Windows Vista	13
Troubleshooting	14
Legal notices	15
One-year limited warranty - Insignia	16

Introduction

Congratulations on your purchase of a high-quality Insignia product. Your NS-PCY5BMA or NS-PCY5BMA-C represents the state of the art in Bluetooth adapter design and is designed for reliable and trouble-free performance.

Features

- Bluetooth specification compliant
- The adapter is compatible with the following profiles:
 - BPP
 - BIP
 - GAP
 - HSP
 - PIM Synchronization
 - FTP
 - DUN
 - PAN
 - SPP
 - HID
 - A2DP

Package contents

- Bluetooth 4.0 EDR adapter
- *Quick Setup Guide*

System requirements

- Pentium processor or equivalent
- One available USB port (USB 2.0 or 3.0)
- Operating system: Microsoft® Windows® 8.1, Windows 8, Windows 7, or Windows Vista®


Windows® 8.1 or Windows® 8

Installing the software

To install the software:

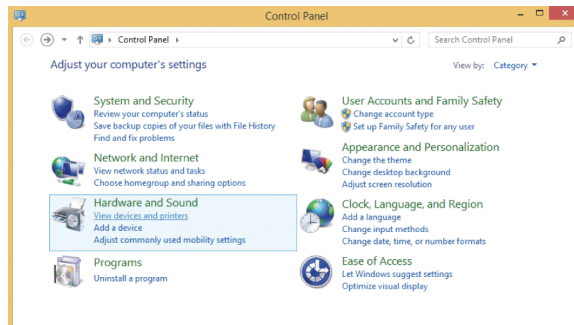
- 1 Plug the Bluetooth adapter into a USB port on your computer.
- 2 Go to: <http://www.broadcom.com/support/bluetooth/update.php>
- 3 and follow the instructions shown on the page to download and install the software.
- 4 Restart your computer to complete installation.

Manually adding the Bluetooth icon to the task bar

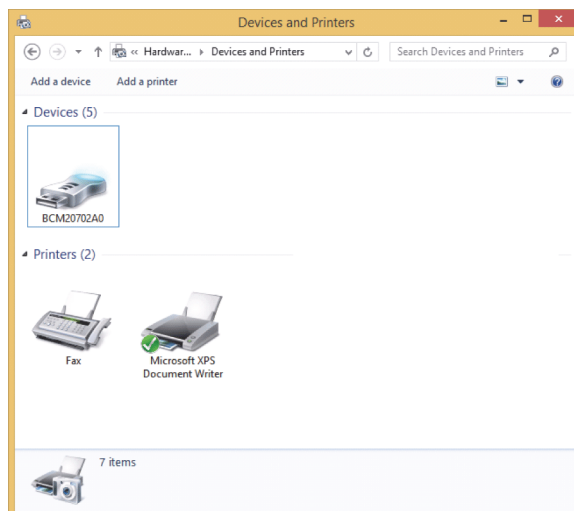
If the Bluetooth icon  does not automatically appear on the task bar, you can add the icon from the Windows *Control Panel*.

To manually add the Bluetooth icon to the task bar:

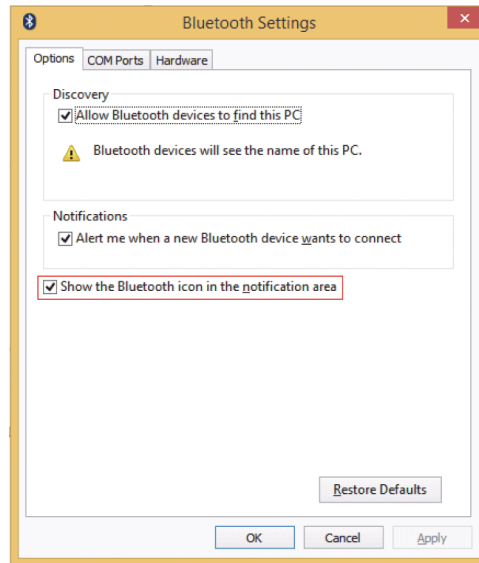
- 1 Open the *Control Panel*.



- 2 Under **Hardware and Sound**, click **View devices and printers**. The *Devices and Printers* screen opens.



3 Right-click **BCM20702A0**, then click **Bluetooth settings**. The *Bluetooth Settings* screen opens.

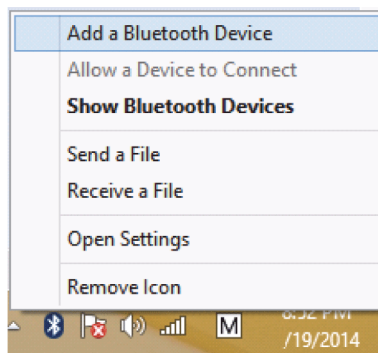


4 Click to check the **Show the Bluetooth icon in the notification area** check box, then click **OK**.

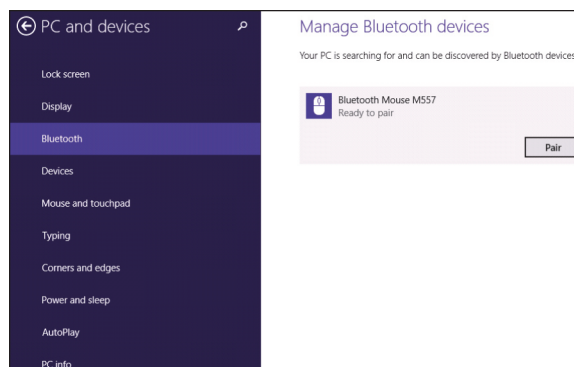
Adding or removing a device

To add a device:

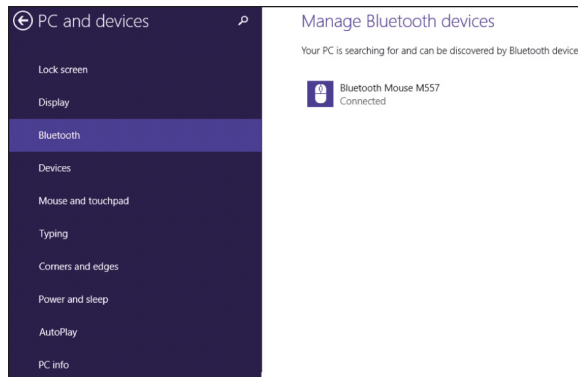
1 Right-click the Bluetooth icon  on the taskbar. A menu opens.




2 Click **Add a Bluetooth Device**. Your computer automatically begins searching for Bluetooth devices.



- 3 Click **Bluetooth**, click the device you want to add, then click **Pair**.
When the device is paired, **Connected** appears next to the device.



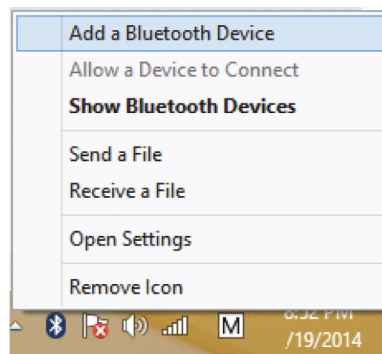
To remove a device:

- Double-click the Bluetooth icon  on the task bar, click the device you want to remove, then click **Remove Device**.

Using the right-click menu

To use the right-click menu:


- Right-click the Bluetooth icon  on the desktop. A menu opens with the following options:

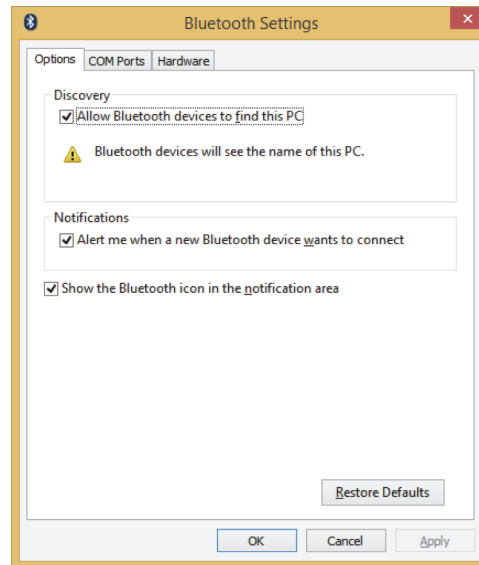


- **Add a Bluetooth Device**—Click to add a new Bluetooth device.
- **Allow a Device to Connect**—Click to automatically let devices detect and connect to your computer.
- **Show Bluetooth Devices**—Click to show a list of all detected Bluetooth devices.
- **Send a File**—Click to send a file using Bluetooth File Sharing.
- **Receive a File**—Click to received a file using Bluetooth File Sharing.
- **Open Settings**—Click to open the Bluetooth Devices screen.
- **Remove Icon**—Click to remove the Bluetooth icon from the task bar.

Managing Bluetooth connections and settings

To manage Bluetooth connections and settings:

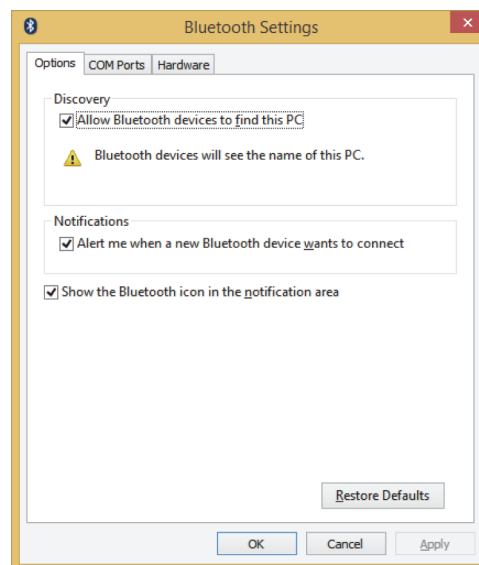
- 1 Right-click the Bluetooth icon  on the desktop, then click **Open Settings**. The *Bluetooth Settings* screen opens.



- 2 Click a tab at the top of the screen to navigate through the options.
- 3 Make changes, as needed, then click a button:
 - **Apply** to confirm a setting without closing the window.
 - **OK** to confirm a setting and close the window.
 - **Cancel** to cancel the setting and close the window.

Options tab

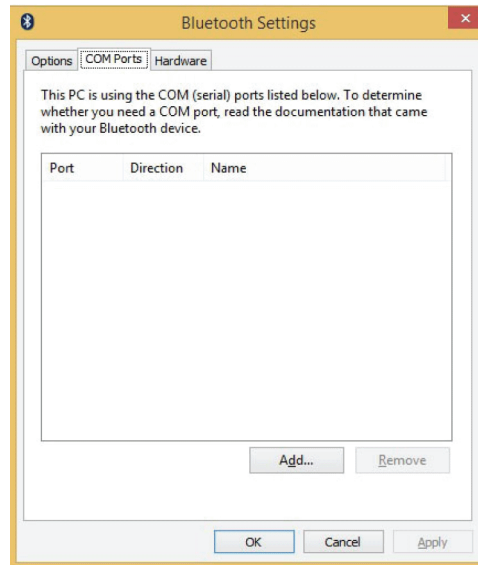
Use this tab to set discovery and connection permissions, show or hide the task bar Bluetooth icon, or restore default settings.



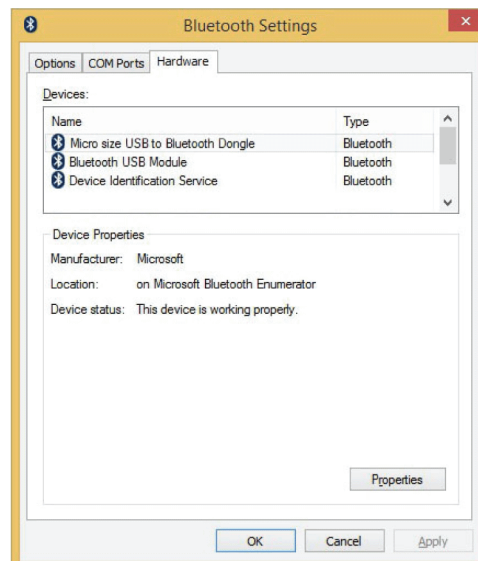
COM Ports tab

Use this tab to configure the COM (serial) port settings for Bluetooth devices.

- Click a device, then click **Add** to assign a COM port to a Bluetooth device.
- Click a device, then click **Remove** to remove a Bluetooth device from the list.

**Hardware tab**

Use this tab to view hardware information on all connected devices. To see detailed information about a device, click the device, then click **Properties**.



Windows® 7 or Windows Vista®

Installing the software

To install the software:

- 1 Plug the Bluetooth adapter into a USB port on your computer.
- 2 Go to: <http://www.broadcom.com/support/bluetooth/update.php>
- 3 and follow the instructions shown on the page to download and install the software.
- 4 Restart your computer to complete installation.

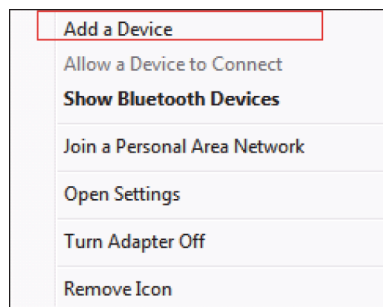
Adding a device in Windows 7

To add a device in Windows 7:

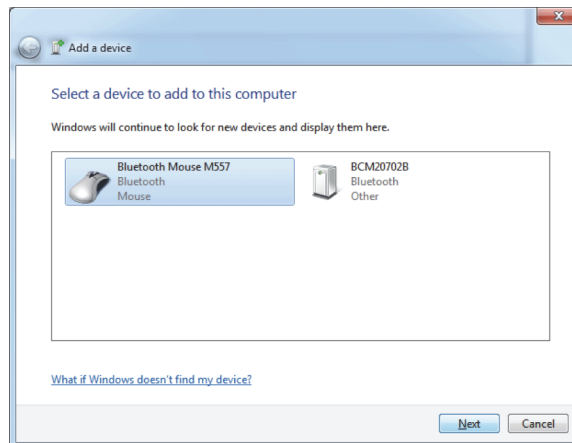
- 1 Right-click the Bluetooth icon  on the task bar. A menu opens.

Note

If you do not see the Bluetooth icon, click the white "Show Hidden icons" arrow on the left side of the task bar.




- 2 Click **Add a Device**. The *Add a device* screen opens.

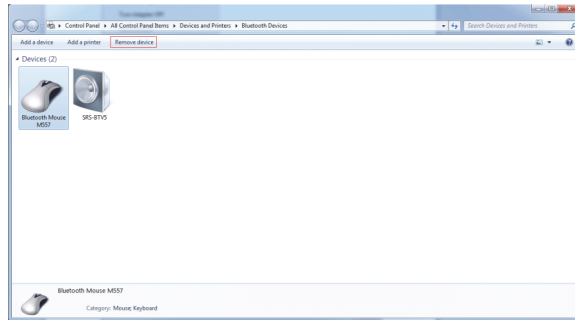


- 3 Click a device, then click **Next**. When the device is connected, the *Add a device* screen re-opens.
- 4 Click **Close**.

Removing a device in Windows 7

To remove a device in Windows 7:


- 1 Double-click the Bluetooth icon  on the task bar. The *Bluetooth Devices* screen opens.

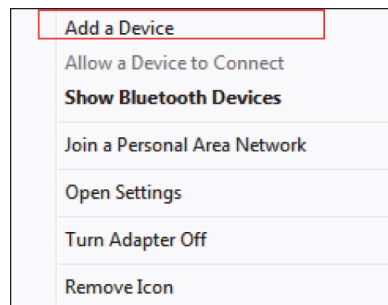


- 2 Click the device you want to remove, then click **Remove Device**.

Using the right-click menu in Windows 7

To use the right-click menu:

- Right-click the Bluetooth icon  on the task bar. A menu opens with the following options:

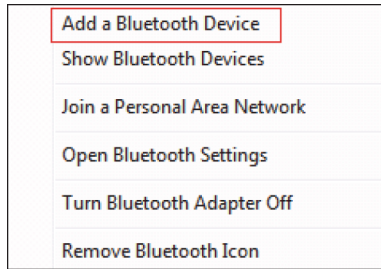


- **Add a Device**—Click to add a new Bluetooth device.
- **Allow a Device to Connect**—Click to automatically let devices detect and connect to your computer.
- **Show Bluetooth Devices**—Click to show a list of all detected Bluetooth devices.
- **Join a Personal Area Network**—Click to join a private Bluetooth network.
- **Open Settings**—Click to open the Bluetooth Devices screen.
- **Turn Adapter Off**—Click to turn off your Bluetooth adapter.
- **Remove Icon**—Click to remove the Bluetooth icon from the task bar.

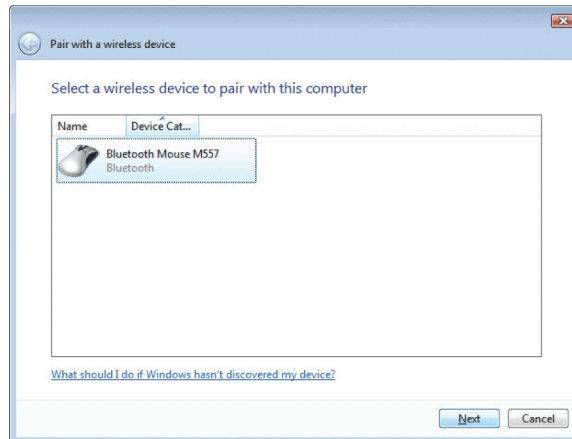
Adding a device in Windows Vista

To add a device in Windows Vista:

- 1 Right-click the Bluetooth icon  on the task bar. A menu opens.




- 2 Click **Add a Bluetooth Device**. The *Pair with a wireless device* screen opens.

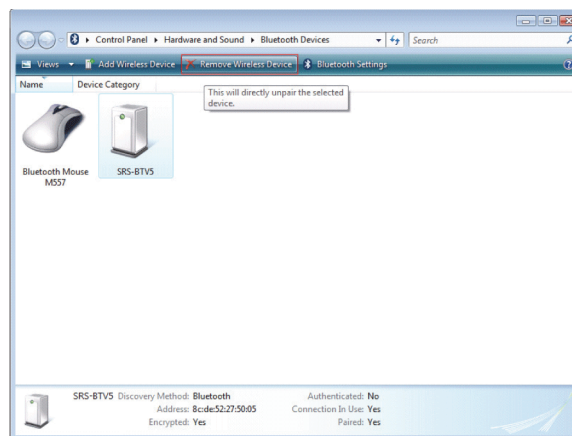


- 3 Click a device, then click **Next**. When the device is connected, the *Pair with a wireless device* screen re-opens.
- 4 Click **Close**.

Removing a device in Windows Vista


To remove a device in Windows Vista:

- 1 Double-click the Bluetooth icon  on the task bar. The *Bluetooth Devices* screen opens.




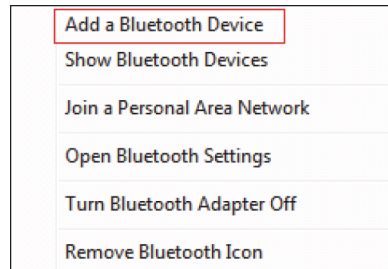
- 2 Click the device you want to remove, then click **Remove Wireless Device**.

Using the right-click menu in Windows Vista

After you have installed the software and restarted your computer, the Bluetooth icon  appears on the desktop and on the task bar.

To use the right-click menu:

- Right-click the Bluetooth icon  on the task bar or desktop. A menu opens with the following options:



- **Add a Bluetooth Device**—Click to add a new Bluetooth device.
- **Show Bluetooth Devices**—Click to show a list of all detected Bluetooth devices.
- **Join a Personal Area Network**—Click to join a private Bluetooth network.
- **Open Bluetooth Settings**—Click to open the Bluetooth Devices screen.
- **Turn Bluetooth Adapter Off**—Click to turn off your Bluetooth adapter.
- **Remove Bluetooth Icon**—Click to remove the Bluetooth icon from the task bar.

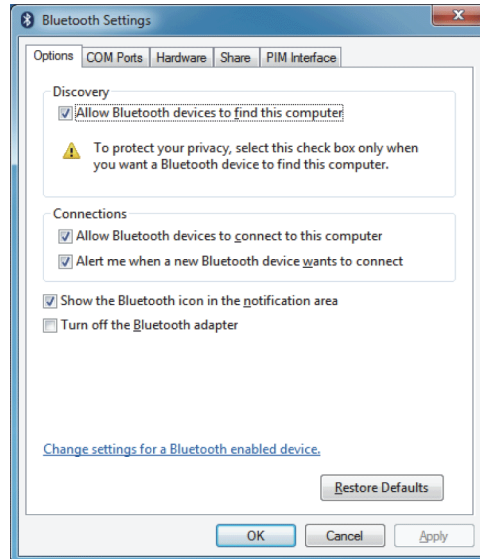
Managing Bluetooth connections and settings in Windows 7 or Windows Vista

To manage Bluetooth connections and settings in Windows 7 or Windows Vista:

- 1 In Windows 7, right-click the Bluetooth icon  on the task bar, then click **Open Settings**.
OR

In Windows Vista, double-click the Bluetooth icon  on the task bar or desktop.

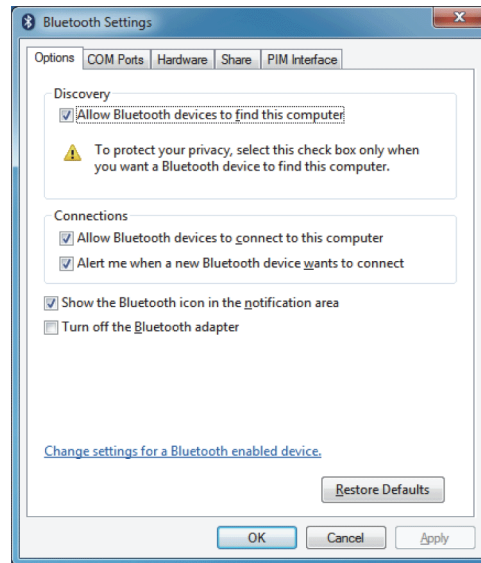
The *Bluetooth Settings* (Windows 7) or *Bluetooth Radio Properties* (Windows Vista) screen opens.



- 2 Click a tab at the top of the screen to navigate through the options.
- 3 Make changes, as needed, then click a button:
 - **Apply** to confirm a setting without closing the window.
 - **OK** to confirm a setting and close the window.
 - **Cancel** to cancel the setting and close the window.

Options tab

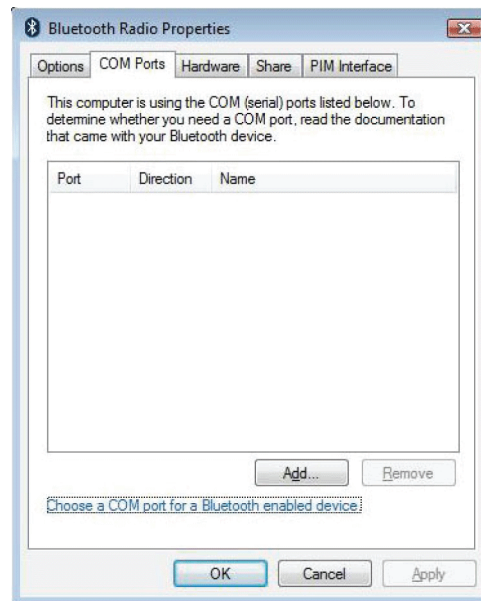
Use this tab to set discovery and connection permissions, show or hide the task bar Bluetooth icon, or restore default settings.



COM Ports tab

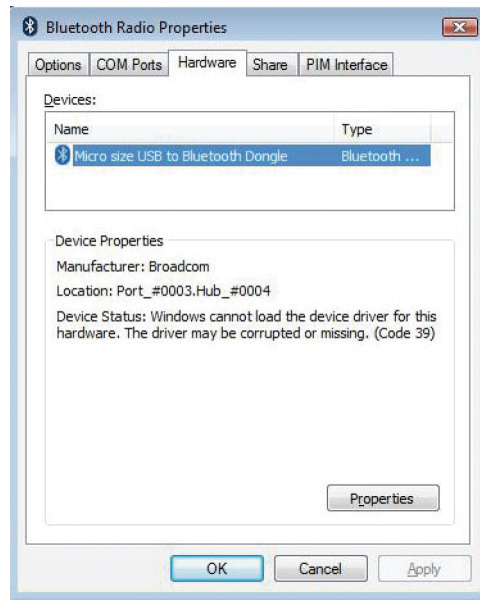
Use this tab to configure the COM (serial) port settings for Bluetooth devices.

- Click a device, then click **Add** to assign a COM port to a Bluetooth device.
- Click a device, then click **Remove** to remove a Bluetooth device from the list.

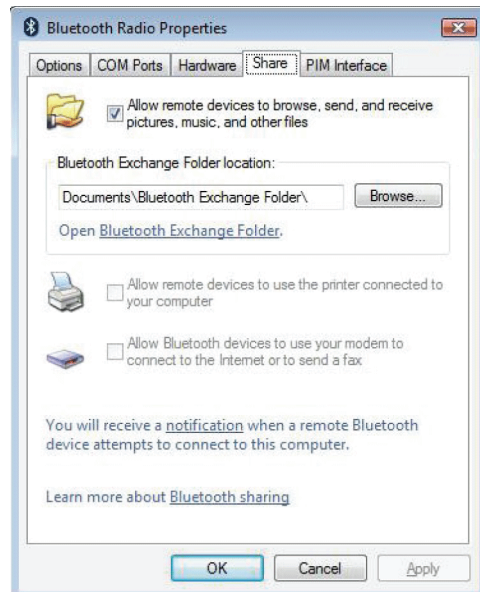


Hardware tab

Use this tab to view hardware information on all connected devices. To see detailed information about a device, click the device, then click **Properties**.

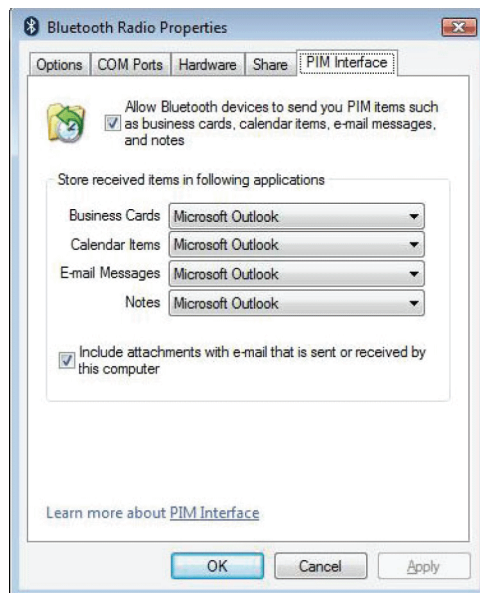
**Share tab**

Use this tab to configure sharing permissions and settings for sending and receiving files. You can specify what type of file can be accessed by remote devices, where shared files are stored, and whether devices can access the Internet through the computer.



PIM Interface tab

Use this tab to configure settings for received PIM items, such as business cards, calendar items, e-mails, and notes. Click an arrow to open a drop-down list, then click the item you want to receive. To block a PIM type, click **Do Not Accept**.



Uninstalling the software

Windows 8.1 or Windows 8

To uninstall the Bluetooth software:

- 1 Move the mouse pointer to top right corner of the screen.
- 2 When the menu opens, click the **Search** (magnifying glass) icon.
- 3 Click **Settings**, then type *Uninstall a program* in the search box.
- 4 Click **Uninstall a Program**.
- 5 Click **WIDCOMM Bluetooth Software**, then click **Uninstall**.

Windows 7 or Windows Vista

To uninstall the Bluetooth software:

- 1 Unplug your Bluetooth adapter.
- 2 Click **Start**, then click **Control Panel**. The *Control Panel* opens.
- 3 Under **Programs**, click **Uninstall a program**. The *Program and Features* window opens.
- 4 Click **WIDCOMM Bluetooth Software**.
- 5 When a message asks you if you want to uninstall the software, click **Yes**.

Troubleshooting

I'm having trouble connecting my Bluetooth device.

- Make sure that you have correctly installed your Bluetooth adapter.
- Use the instructions that came with your Bluetooth device to pair with the computer.
- If your computer has built-in Bluetooth, you do not need this adapter. If you still would like to use your Insignia Bluetooth adapter, disable the built-in Bluetooth, uninstall any existing software, then re-install the Insignia Bluetooth adapter.

My headset or speakers are not playing sound after pairing.

- Make sure that Windows automatically downloaded the drivers to install your Bluetooth adapter or that you installed the software from the included installation CD.
You can also download drivers from the Insignia website.
 - 1 Go to www.insigniaproducts.com, then click **Support & Service**.
 - 2 Enter your model number in the box under **Manual, Firmware, Drivers & Product Information**, then click ►.
 - 3 Click the *Driver* link, then follow the online installation instructions.
- The computer's default speakers may be overriding your headset or speakers. In the Control Panel, go into the sound settings and select your headset or speakers as the default speaker.
- Turn up the volume on your computer or paired device.

My voice is echoing while using a headset.

- Your headset may not be set as the default microphone. In the Control Panel, go into the sound settings and select your headset as the default microphone.

My adapter isn't working after installing Windows® 8.

- Unplug the Bluetooth adapter, restart your computer, then plug the adapter back into your computer's USB port.
- Make sure that you have installed the Windows 8 drivers on your computer correctly.

To check the Windows 8 drivers:

- 1 Move mouse to top right corner of the screen.
- 2 When the menu opens, click the **Search** (magnifying glass) icon.
- 3 Click Settings, then type *Device Manager* in the search box.
- 4 Click **Device Manager**, then click **Bluetooth**.
- 5 Right-click on your device, then click **Properties**.

Legal notices

Declaration of conformity

Important Information

Bluetooth products must be installed and used in strict accordance with the manufacturer's instructions as described in the user documentation that comes with the product. The device complies with the following radio frequency and safety standards.

- Federal Communications Commission (FCC) Compliance Notice
- Radio Frequency Notice

Changes or modifications to this unit not expressly approved by the party responsible for compliance could void the user's authority to operate the equipment.

This device complies with part 15 of the FCC Rules. Operation is subject to the following two conditions: 1. This device may not cause harmful interference. 2. This device must accept any interference received, including interference that may cause undesired operation.

The user's manual or instruction manual for an intentional or unintentional radiator shall caution the user that changes or modifications not expressly approved by the party responsible for compliance could void the user's authority to operate the equipment.

Note: This equipment has been tested and found to comply with the limits for a Class B digital device, pursuant to part 15 of the FCC Rules. These limits are designed to provide reasonable protection against harmful interference in a residential installation. This equipment generates, uses and can radiate radio frequency energy and, if not installed and used in accordance with the instructions, may cause harmful interference to radio communications. However, there is no guarantee that interference will not occur in a particular installation. If this equipment does cause harmful interference to radio or television reception, which can be determined by turning the equipment off and on, the user is encouraged to try to correct the interference by one or more of the following measures:

- (1) Reorient or relocate the receiving antenna,
- (2) Increase the separation between the equipment and receiver,
- (3) Connect the equipment into an outlet on a circuit different from that to which the receiver is connected,
- (4) Consult the dealer or an experienced radio/TV technician for help.

Interference Notice

Bluetooth products are a radio device that might cause interference with other non-Bluetooth devices (for instance, devices using wireless LAN). 802.11b technology might cause degradation on the performance of Bluetooth devices.

Caution

- 1 To comply with FCC RF exposure compliance requirements, a separation distance of at least 20 cm must be maintained between the antenna of this device and all persons.
- 2 This Transmitter must not be co-located or operating in conjunction with any other antenna or transmitter.

Department of Communications-Canada

Canadian Compliance Statement

This Class B Digital apparatus meets all the requirements of the Canadian Interference Causing Equipment Regulations.

This device complies with Class B Limits of Industry of Canada. Operation is subject to the following two conditions: 1) this device may not cause harmful interference, and 2) this device must accept any interference received, including interference that may cause undesired operation. This device is certified to the requirements of RSS-210 for 2.4 GHz spread spectrum devices. The use of this device in a system operating either partially or completely outdoors may require the user to obtain a license for the system according to the Canadian regulations. For further information, contact local Industry Canada office.

One-year limited warranty - Insignia

Definitions:

The Distributor* of Insignia branded products warrants to you, the original purchaser of this new Insignia-branded product ("Product"), that the Product shall be free of defects in the original manufacturer of the material or workmanship for a period of one (1) year from the date of your purchase of the Product ("Warranty Period").

For this warranty to apply, your Product must be purchased in the United States or Canada from a Best Buy branded or Future Shop branded retail store or online at www.bestbuy.com, www.bestbuy.ca, or www.futureshop.ca and is packaged with this warranty statement.

How long does the coverage last?

The Warranty Period lasts for 1 year (365 days) from the date you purchased the Product. Your purchase date is printed on the receipt you received with the Product.

What does this warranty cover?

During the Warranty Period, if the original manufacture of the material or workmanship of the Product is determined to be defective by an authorized Insignia repair center or store personnel, Insignia will (at its sole option): (1) repair the Product with new or rebuilt parts; or (2) replace the Product at no charge with new or rebuilt comparable products or parts. Products and parts replaced under this warranty become the property of Insignia and are not returned to you. If service of Products or parts are required after the Warranty Period expires, you must pay all labor and parts charges. This warranty lasts as long as you own your Insignia Product during the Warranty Period. Warranty coverage terminates if you sell or otherwise transfer the Product.

How to obtain warranty service?

If you purchased the Product at a Best Buy or Future Shop retail store location, please take your original receipt and the Product to any Best Buy or Future Shop store. Make sure that you place the Product in its original packaging or packaging that provides the same amount of protection as the original packaging. If you purchased the Product from a Best Buy or Future Shop online web site (www.bestbuy.com, www.bestbuy.ca, or www.futureshop.ca), mail your original receipt and the Product to the address listed on the web site. Make sure that you put the Product in its original packaging or packaging that provides the same amount of protection as the original packaging.

To obtain warranty service, in the United States call 1-888-BESTBUY, Canada call 1-866-BESTBUY for Future Shop call 1-800-663-2275. Call agents may diagnose and correct the issue over the phone.

Where is the warranty valid?

This warranty is valid only in the United States and Canada at Best Buy or Future Shop branded retail stores or websites to the original purchaser of the product in the county where the original purchase was made.

What does the warranty not cover?

This warranty does not cover:

- Customer instruction/education
- Installation
- Set up adjustments
- Cosmetic damage
- Damage due to weather, lightning and other acts of God, such as power surges
- Accidental damage
- Misuse
- Abuse
- Negligence
- Commercial purposes/use, including but not limited to use in a place of business or in communal areas of a multiple dwelling condominium or apartment complex, or otherwise used in a place of other than a private home.
- Modification of any part of the Product, including the antenna
- Display panel damaged by static (non-moving) images applied for lengthy periods (burn-in).
- Damage due to incorrect operation or maintenance
- Connection to an incorrect voltage or power supply
- Attempted repair by any person not authorized by Insignia to service the Product
- Products sold "as is" or "with all faults"
- Consumables, including but not limited to batteries (i.e. AA, AAA, C etc.)
- Products where the factory applied serial number has been altered or removed
- Loss or Theft of this product or any part of the product
- Display panels containing up to three (3) pixel failures (dots that are dark or incorrectly illuminated) grouped in an area smaller than one tenth (1/10) of the display size or up to five (5) pixel failures throughout the display. (Pixel based displays may contain a limited number of pixels that may not function normally.)
- Failures or Damage caused by any contact including but not limited to liquids, gels or pastes.

REPAIR OR REPLACEMENT AS PROVIDED UNDER THIS WARRANTY IS YOUR EXCLUSIVE REMEDY FOR BREACH OF WARRANTY. INSIGNIA SHALL NOT BE LIABLE FOR ANY INCIDENTAL OR CONSEQUENTIAL DAMAGES FOR THE BREACH OF ANY EXPRESS OR IMPLIED WARRANTY ON THIS PRODUCT, INCLUDING, BUT NOT LIMITED TO, LOST DATA, LOSS OF USE OF YOUR PRODUCT, LOST BUSINESS OR LOST PROFITS. INSIGNIA PRODUCTS MAKES NO OTHER EXPRESS WARRANTIES WITH RESPECT TO THE PRODUCT, ALL EXPRESS AND IMPLIED WARRANTIES FOR THE PRODUCT, INCLUDING, BUT NOT LIMITED TO, ANY IMPLIED WARRANTIES OF AND CONDITIONS OF MERCHANTABILITY AND FITNESS FOR A PARTICULAR PURPOSE, ARE LIMITED IN DURATION TO THE WARRANTY PERIOD SET FORTH ABOVE AND NO WARRANTIES, WHETHER EXPRESS OR IMPLIED, WILL APPLY AFTER THE WARRANTY PERIOD. SOME STATES, PROVINCES AND JURISDICTIONS DO NOT ALLOW LIMITATIONS ON HOW LONG AN IMPLIED WARRANTY LASTS, SO THE ABOVE LIMITATION MAY NOT APPLY TO YOU. THIS WARRANTY GIVES YOU SPECIFIC LEGAL RIGHTS, AND YOU MAY ALSO HAVE OTHER RIGHTS, WHICH VARY FROM STATE TO STATE OR PROVINCE TO PROVINCE.

Contact Insignia:

For customer service please call 1-877-467-4289 (U.S. and Canada) 01-800-926-3000 (Mexico)

www.insigniaproducts.com

*Distributed by Best Buy Purchasing LLC

7601 Penn Avenue South, Richfield, Minnesota, U.S.A. 55423-3645

© 2014 BBY Solutions, Inc.

All rights reserved. INSIGNIA is a trademark of BBY Solutions, Inc. Registered in some countries. All other products and brand names are trademarks of their respective owners.

Made in China

INSIGNIA™

www.insigniaproducts.com

1-877-467-4289 (U.S. and Canada) 01-800-926-3000 (Mexico)

*Distributed by Best Buy Purchasing, LLC

7601 Penn Avenue South, Richfield, Minnesota, U.S.A. 55423-3645

© 2014 BBY Solutions, Inc.

All rights reserved. INSIGNIA is a trademark of BBY Solutions, Inc. Registered in some countries.

All other products and brand names are trademarks of their respective owners.

Made in China

V1 ENGLISH
14-0391

Free Manuals Download Website

<http://myh66.com>

<http://usermanuals.us>

<http://www.somanuals.com>

<http://www.4manuals.cc>

<http://www.manual-lib.com>

<http://www.404manual.com>

<http://www.luxmanual.com>

<http://aubethermostatmanual.com>

Golf course search by state

<http://golfingnear.com>

Email search by domain

<http://emailbydomain.com>

Auto manuals search

<http://auto.somanuals.com>

TV manuals search

<http://tv.somanuals.com>