
Firmware Update for the DTR-80.2/70.2 and DHC-80.2

We are pleased to offer this firmware update for the best possible performance of your AV Receiver.

A firmware update is now available through the Network or USB connections on the DTR-80.2/70.2 and DHC-80.2.

The 11/10/10 update addresses the following:

DTR-80.2/70.2 and DHC-80.2

1. Improves the playback of particular wav files
2. Corrects intermittent activation of Auto Power Down function during playback in NET/USB mode

The 10/27/10 update addresses the following:

DTR-80.2/70.2 and DHC-80.2

1. Stabilizes "Now Initializing" process to activate [NET/USB] mode in a busy network;
2. Improves the playback speed of particular VR (Variable Bit Rate) mp3 files.
3. Changes the timing of volume operation start. (thereby avoiding problems of no sound output after power is turned on from Standby mode with network control enabled).

The 09/17/10 update addresses the following:

DTR-80.2/70.2 and DHC-80.2

1. Improves Audyssey MultEQ XT32 processing.
Please carry out auto speaker setup again by using Audyssey MultEQ XT32 after upgrade.
2. Enhances the operability and display of network/USB-related functions

The latest update includes all prior updates.

We hope you enjoy the improved functionality this update provides to your AV Receiver.

Firmware Update for DTR-70.2/DTR-80.2 and DHC-80.2

There are the following methods to update the firmware: via network and via USB storage. Please choose either one that suits your condition. Before you start, carefully read the update procedure. It will take about 30 minutes to update the firmware.

□ Update via network

You need a wired Internet connection to update the firmware.

For the update procedure, please refer to Updating the Firmware via Network (Updating the Firmware via Network).

□ Update via USB storage

Please prepare a USB storage device such as a USB flash memory stick. You need at least 32 MB of available space to update the firmware.

For the update procedure, please refer to Updating the Firmware via USB (Updating the Firmware via USB).

Precautions:

- Check the network connection before update.
- Do not touch the cable or any other device connected to the AV receiver/controller during updating process.
- Do not access the AV receiver/controller from PC during updating process.
- Do not shutdown the power of the AV receiver/controller while update.
- The storage media in the USB card reader may not work.
- If the storage device has been partitioned, each section will be treated as an independent device.
- If the USB mass storage device contains a lot of data, the AV receiver/controller may take a while to read it.
- Operation with all USB mass storage devices including the ability to power them is not guaranteed.
- Integra accepts no responsibility whatsoever for the loss or damage to data stored on a USB mass storage device when that device is used with the AV receiver/controller. Integra recommends that you back up your important music files beforehand.
- If you connect a USB hard disk drive to the USB port, Integra recommends that you use its AC adapter to power it.
- USB hubs and USB devices with hub functions are not supported. Do not connect your USB mass storage device via a USB hub.
- USB mass storage devices with security functions are not supported.

Limitation of liability

The program and accompanying online documentation are furnished to you for use at your own risk. Integra will not be liable and you will have no remedy for damages for any claim of any kind whatsoever concerning your use of the program or the accompanying online documentation, regardless of legal theory, and whether arising in tort or contract. In no event will Integra be liable to you or any third party for any special, indirect, incidental, or consequential damages of any kind, including, but not limited to, compensation, reimbursement or damages on account of the loss of present or prospective profits, loss of data, or for any other reason whatsoever.

Updating the Firmware via Network

DTR-70.2, DTR-80.2 and DHC-80.2 allow you to update firmware using network connection on rear panel.

* In this procedure, on-screen display may vary depending on the model.

- Make sure the AV receiver/controller and TV are turned on and Ethernet cable is connected to rear panel of the AV receiver/controller.
- Never unplug or turn off the AV receiver/controller during updating process.
- Never plug or unplug an HDMI cable and Ethernet cable during updating process.
- Never unplug the AC power cord during updating process.
- Do not access the AV receiver/controller from PC during updating process.
- It will take about 30 minutes to update the firmware.
- The AV receiver/controller will retain all your settings after update is finished.

□ Before you start

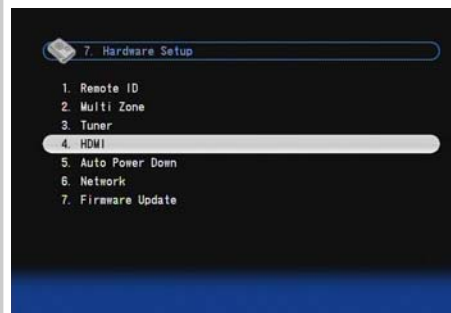
- Check HDMI Control (RIHD) setting. The update may not be successful if this setting is on.
- Turn off the controller device connected via RS232C and via Ethernet network.
- Turn off Zone 2 and Zone 3.
- Stop playback of content from Internet radio, iPod, USB or servers, etc.

How to turn off RIHD

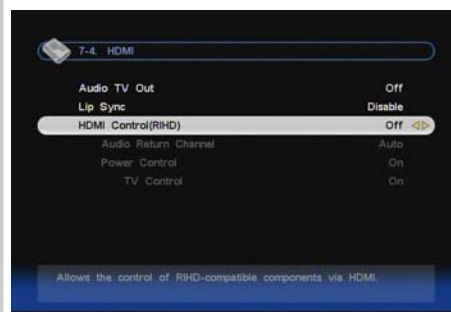
- 1 In the Main menu select “Hardware Setup”.



- 2 Select “HDMI”.



- 3 Set “HDMI Control(RIHD)” to “Off”.



Update procedure

1 Press RECEIVER followed by SETUP on the remote controller.

Main menu will be displayed on TV screen. Procedures thereafter can also be performed on the AV receiver/controller by using its **SETUP**, arrow, and **ENTER** buttons.

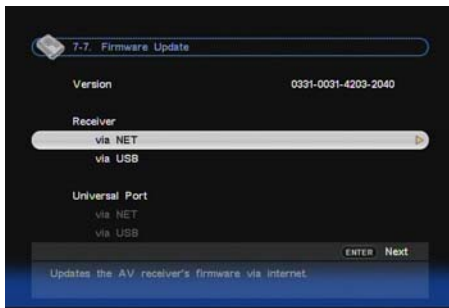
2 Go to “Hardware Setup” menu.

3 Go to “Firmware Update” menu.

Note that the Firmware Update option will be grayed out about 50 seconds after the AV receiver/controller is turned on. Please wait.



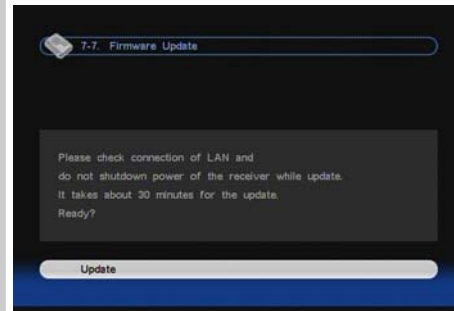
4 Select “via NET” and press ENTER.



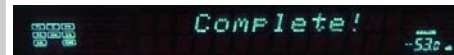
5 Select “Update” and press ENTER.

Updating will begin.

As the updating progresses, the TV screen may disappear depending on the program updated. In this case, you can see the update progress on the front display of the AV receiver/controller. The TV screen will reappear when you finish the update and turn on the AV receiver/controller.



6 Message “Complete!” appears on the front display of the AV receiver/controller, indicating that the update has been completed.



7 Using ON/STANDBY on the front panel, turn off and on the AV receiver/controller.

Do not use **ON** or **STANDBY** on the remote controller.

Congratulations!! Now you have the latest firmware on the AV receiver/controller.

(Go to the next page for troubleshooting.)

□ Troubleshooting

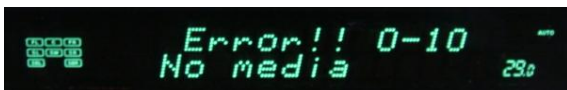
Case1:

If “**No Update**” is displayed on the front display of the AV receiver/controller, the firmware has already been updated. You do not need to do anything further.



Case2:

If an error occurs, “**Error!! *-** No media**” is displayed on the front display of the AV receiver/controller. (Alpha-numeric characters on the front display are denoted by asterisks.) See the following table and take appropriate action.



Errors during update via network

Error Code	Description
*10 , *20	Ethernet cable is not detected. Connect the cable properly. See the instruction manual for the network connection.
*11 , *13 , *21 , *28	Internet connection error. Check the following items: ¥ Make sure IP address, subnet mask, gateway address, and DNS server are configured properly. ¥ Make sure the router is turned on. ¥ Make sure the AV receiver/controller and the router are connected with Ethernet cable. ¥ Make sure the setup configuration of the router is set properly. See the instruction manual of the router. ¥ If your network allows only one client connection and there is any other device already connected, the AV receiver/controller cannot access the network. Consult your Internet Service Provider (ISP). ¥ If your modem does not function as a router, you will need a router. Depending on your network, you may need to configure the proxy server if needed. See the document provided by your ISP. If you still cannot access the Internet, DNS or proxy server may be temporarily down. Contact your ISP.

Others

Retry the update procedure from the beginning. If the error persists, please contact Integra Support (indicated in the last page) and provide the error code.

Case3:

If an error occurs during updating process, disconnect then reconnect the AC power cord and try again.

Case4:

If you do not have a wired connection to the network, please contact Integra Support.

Updating the Firmware via USB

DTR-70.2, DTR-80.2 and DHC-80.2 allow you to update firmware using a USB storage device.

* In this procedure, on-screen display may vary depending on the model.

- Make sure the AV receiver/controller and TV are turned on.
- Never unplug or turn off the AV receiver/controller during updating process.
- Never plug or unplug an HDMI cable during updating process.
- Never unplug the USB storage device containing the firmware file and the AC power cord during updating process.
- Do not access the AV receiver/controller from PC during updating process.
- It will take about 30 minutes to update the firmware.
- The AV receiver/controller will retain all your settings after update is finished.

□ Before you start

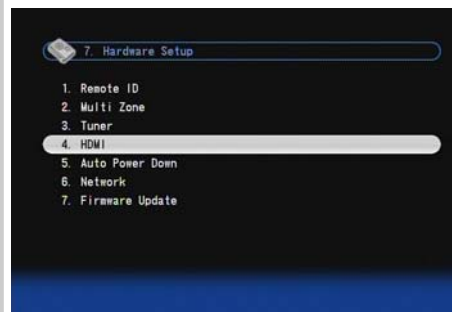
- Check HDMI Control (RIHD) setting. The update may not be successful if this setting is on.
- Turn off the controller device connected via RS232C and via Ethernet network.
- Turn off Zone 2 and Zone 3.
- Stop playback of content from Internet radio, iPod, USB or servers, etc.
- If there is any data in the USB storage device, remove it.

How to turn off RIHD

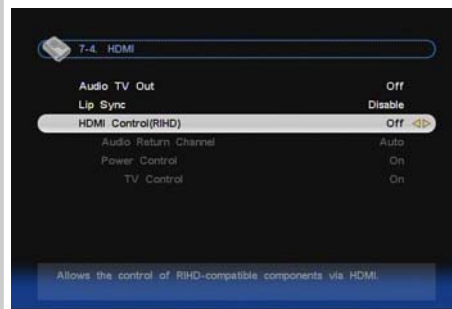
- 1 In the Main menu select “Hardware Setup”.



- 2 Select “HDMI”.



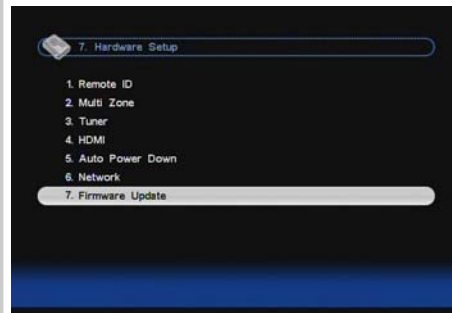
- 3 Set “HDMI Control(RIHD)” to “Off”.



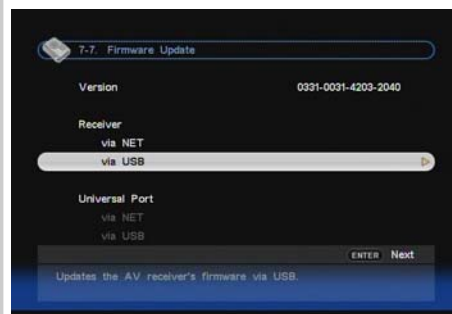
□ Update procedure

- 1** Connect a USB storage device to your PC. If there is any data in the USB storage device, remove it.
- 2** Download the firmware file from the Integra web site. The file name is as follows:
ONKAVR0003_*****.zip
Unzip the downloaded file. The following three files are created:
ONKAVR0003_*****.of1
ONKAVR0003_*****.of2
ONKAVR0003_*****.of3
- 3** Copy the extracted files to the USB storage device. Be careful not to copy the zip file.
- 4** Remove the USB storage device from your PC and connect it to the USB port on the AV receiver/controller. When the AV receiver/controller has two USB ports, you can use either one.
- 5** Make sure the AV receiver/controller and TV are turned on.
If the AV receiver/controller is in standby mode, press **ON/STANDBY** to light up the front display.
- 6** Select the USB input source. “Now Initializing” is displayed on the front display and then the name of the USB storage device is displayed. It will take 20 to 30 seconds to recognize the USB storage device.
- 7** Press **RECEIVER** followed by **SETUP** on the remote controller.
Main menu will be displayed on TV screen. Procedures thereafter can also be performed on the AV receiver/controller by using its **SETUP**, arrow, and **ENTER** buttons.
- 8** Go to “Hardware Setup” menu.

9 Go to “Firmware Update” menu.



10 Select “via USB” and press ENTER.

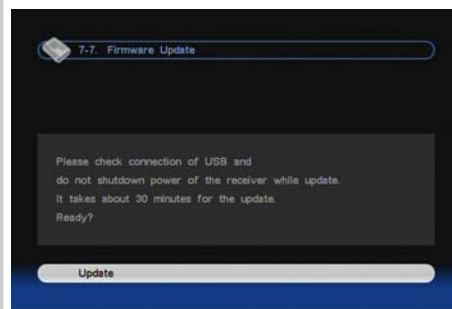


11 Select “Update” and press ENTER.

Updating will begin.

As the updating progresses, the TV screen may disappear depending on the program updated. In this case, you can see the update progress on the front display of the AV receiver/controller. The TV screen will reappear when you finish the update and turn on the AV receiver/controller.

Do not turn off the AV receiver/controller and do not remove the USB storage device during updating process.



Integra.

- 12** Message “Complete!” appears on the front display of the AV receiver/controller, indicating that the update has been completed.



-
- 13** Using **ON/STANDBY** on the front panel, turn off the AV receiver/controller and then remove the USB storage device.

* Do not use **ON** or **STANDBY** on the remote controller.

-
- 14** Press **ON/STANDBY** to turn on the AV receiver/controller.

Congratulations!! Now you have the latest firmware on the AV receiver/controller.

(Go to the next page for troubleshooting.)

□ Troubleshooting

Case1:

If “**No Update**” is displayed on the front display of the AV receiver/controller, the firmware has already been updated. You do not need to do anything further.



Case2:

If an error occurs, “**Error!! *-** No media**” is displayed on the front display of the AV receiver/controller. (Alpha-numeric characters on the front display are denoted by asterisks.) See the following table and take appropriate action.



Errors during update via USB

Error Code	Description
*10, *20	USB storage device is not detected. Make sure the USB flash memory or USB cable is properly connected to the USB port. If the USB storage device has its own power supply, use it to power the USB storage device.
*-14	The firmware file is not found in the root folder of the USB storage device, or the firmware file is for other model. Retry download. If the error persists, please contact Integra Support (indicated in the last page) and provide the error code.
Others	Retry the update procedure from the beginning. If the error persists, please contact Integra Support (indicated in the last page) and provide the error code.

Case3:

If an error occurs during updating process, disconnect then reconnect the AC power cord and try again.

Onkyo CORPORATION

2-1, Nisshin-cho, Neyagawa-shi, OSAKA 5728540, JAPAN

The Americas

ONKYO U.S.A. CORPORATION

18 Park Way, Upper Saddle River, N.J. 07458, U.S.A.

Tel: 800-229-1687, 201-785-2600

Fax: 201-785-2650

Hours: M-F 9am-8pm/Sat-Sun 10am-4pm ET

<<http://www.okyousa.com/>>

Europe

ONKYO EUROPE ELECTRONICS GmbH

Liegnitzerstrasse 6, 82194

Groebenzell, GERMANY

Tel: +49-8142-4401-0 Fax: +49-8142-4401-555

<<http://www.eu.onkyo.com/>>

China, Hong Kong

ONKYO CHINA LIMITED

Unit 1&12, 9/F, Ever Gain Plaza Tower 1, 88, Container Port Road, Kwai Chung, N.T., Hong Kong

Tel: 852-2429-3118 Fax: 852-2428-9039

<<http://www.onkyochina.com/>>

Asia, Oceania, Middle East, Africa

Please contact an INTEGRA distributor referring to Integra SUPPORT site.

<http://www.intl.onkyo.com/support/local_support/index.html>

Free Manuals Download Website

<http://myh66.com>

<http://usermanuals.us>

<http://www.somanuals.com>

<http://www.4manuals.cc>

<http://www.manual-lib.com>

<http://www.404manual.com>

<http://www.luxmanual.com>

<http://aubethermostatmanual.com>

Golf course search by state

<http://golfingnear.com>

Email search by domain

<http://emailbydomain.com>

Auto manuals search

<http://auto.somanuals.com>

TV manuals search

<http://tv.somanuals.com>