

KVM SWITCH QUICK START GUIDE

MODELS 157025 & 157032



Thank you for purchasing this INTELLINET NETWORK SOLUTIONS™ KVM Switch. This compact KVM Switch with Audio and Mic switching functionality allows you to access, control, boot and reboot two (Model 157025) or four (Model 157032) USB-enabled multimedia computers with only one USB keyboard, mouse, monitor and optional speaker set and microphone, using the Switching Software Client installed on your PCs.

INSTALLATION

1. Insert the enclosed CD into your CD drive. The installer program, USBKVMIn.exe, will run (or you can find it with Explorer and double-click its icon to start installation). Complete the software installation on each PC to be connected to the switch. When completed, you'll see a KVM Switcher icon on the system tray of the desktop. Right-click to display the operation menu; double-click to display the configuration box. (See KVM Switcher section for details.)



No live connection detected

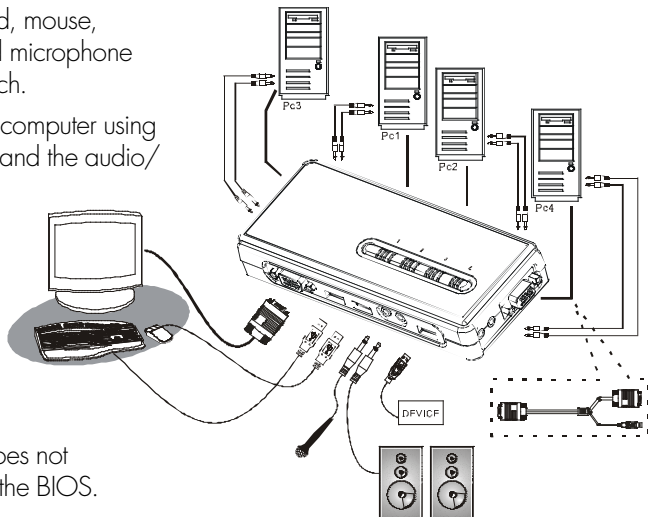


Current active PC channel is on port 1 (or 2, 3 or 4)

NOTE: The KVM Switcher software supports only the Windows operating system on PC platforms. For other OS platforms, such as Linux, you can still use the keyboard hotkey — ScrLk + ScrLk — to switch PCs. However, this switching hotkey is not available on non-PC platforms such as MacOS. When connected to a Mac, use the face-panel button to switch ports.

2. Connect the shared USB keyboard, mouse, monitor, speaker/headphone and microphone each to its port on your KVM Switch.
3. Connect each KVM PC port to a computer using the slim 3-in-1 KVM combo cable and the audio/mic cable. Once you have connected the switch and computers properly, you can operate the KVM Switch.

NOTE: Some older computers with a USB interface may need to manually enable the USB option in the BIOS settings before using any USB devices. If your USB interface does not work, check the USB option status in the BIOS.



NOTE: If using Windows 95/98/SE without a USB mouse, an error message may appear saying that a mouse is not detected and giving you the option of ignoring the same message in the future. Since you likely would have no mouse movement to disable this message, it's recommended that a USB mouse be installed on your computer before connecting it to this KVM Switch.

OPERATION

There are three ways to control PC switching: using the face-panel push buttons, hotkey sequences or the KVM Switcher software. (For audio/mic switching, use the hotkey command.)

Face-Panel Buttons

The face-panel buttons allow you direct control over PC port switching. Simply press the button to switch to the corresponding PC port (and audio/mic channel, if binding is enabled). By default, PC port switching and audio/mic port switching are bound together. **NOTE:** You can use the face-panel button to switch to an empty port that is not connected with any computer. Normally, if you use keyboard hotkeys or the KVM Switcher software, you will not be able to switch to an empty port.

Keyboard Hotkeys

A user-definable keyboard hotkey sequence for a PC consists of at least three specific keystrokes:

Ctrl + Alt + [command key]

For other operating systems on a PC, such as Linux, you can use this universal hotkey sequence:

ScrLk + ScrLk

NOTE: The universal hotkey is not available for Mac. And neither the universal hotkey nor user-definable hotkeys allow you to switch to an empty port that is not connected with any computer. To switch to an empty port, just press the corresponding face-panel button.

Each keystroke within a hotkey sequence should be pressed within 2 seconds. Otherwise, the hotkey sequence will not be validated.

After switching ports, wait for the KVM Switch icon to show the target port before switching again. The icon can be found on the system tray of your Windows desktop after its installation.

Hotkeys are functional only after your PCs boot into the OS. If you want to switch a PC in the BIOS/preboot stage, press the corresponding face-panel button.

KVM Switcher

In addition to PC switching, the KVM Switcher software offers more advanced functions.

Switch PCs by Operation Menu: Right-click the KVM Switcher icon to display the operation menu, then select whichever PC that is available for switching. Once you select a PC channel, it'll immediately switch to that PC. Unconnected port(s) and the active port are grayed-out and non-selectable.

Switch PCs by Keyboard Hotkeys: Hit the hotkey according to your current definition: Hotkey sequence = Ctrl + Alt + [command key]. The factory default hotkey setting is Ctrl + Alt + 1/2/3/4 for PCs 1-4. You can also use ScrLk + ScrLk.



Start Auto-Scan: Right-click the KVM Switcher icon to display the operation menu; select "Start Auto-Scan."

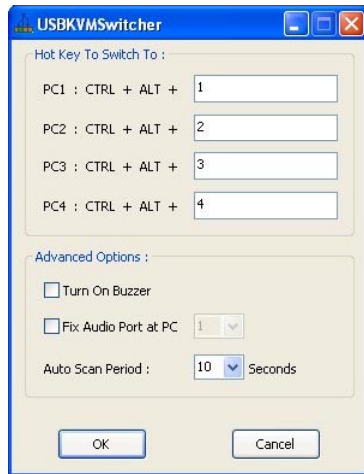
Stop Auto-Scan: (While auto-scanning) right-click the KVM Switcher icon to display the operation menu; select "Stop Auto-Scan." Or press any button on the face-panel.

KVM Switcher Configuration: Right-click the KVM Switcher icon; select "Settings" or double-click the icon to bring up the configuration dialog box.

Define Hotkey Commands: You can specify command keys by entering them in the corresponding editable fields. Except for control keys (Alt, Ctrl, Shift, Caps, Tab, Esc), function keys and edit keys, any key on the keyboard can be used to define a hotkey command, including keys on the number pad. Remember, you can also use the universal hotkey for PC switching: Scrlk + Scrlk.

Fix the Audio Port at PC "X": Once this option is checked, the audio/mic channel at the designated PC will be "fixed," or non-switchable.

Auto-Scan Period: Select from 10 to 60 seconds (in increments of 5 seconds). The auto-scan period is the time your KVM Switch will wait to switch to the next PC.



SPECIFICATIONS

General

- PC connections: Model 157025, 2; Model 157032: 4
- Console connections: 1
- PC port connectors, Model 157025:
 - 2 x USB Type A (keyboard, mouse)
 - 2 x HD15 male (video)
 - 2 x USB mini 5-pin B (audio, for use with included USB mini to 3.5 mm audio cable)
- PC port connectors, Model 157032:
 - 4 x USB Type A (keyboard, mouse)
 - 4 x HD15 male (video)
 - 4 x 3.5 mm audio cable (for microphone and speaker soundcard connection)
- Console port connectors:
 - 2 x USB Type A (keyboard, mouse)
 - 1 x HD15 female (video)
- Audio connectors, Model 157025:
 - 2 x 3.5 mm jacks (microphone, speaker)
- Audio connectors, Model 157032:
 - 2 x 3.5 mm jacks (console mic input, speaker output)
 - 4 x 3.5 mm jack (microphone for PC ports)
 - 4 x 3.5 mm jack (speakers for PC ports)
- Computer selection via buttons, hotkeys or Windows switching software client

- Video resolution: max. 2048 x 1536
- Video bandwidth: max. 350 MHz
- FCC Class B, CE, RoHS

Standards

- USB 1.1

LEDs

- One LED per channel

Power

- USB bus powered
- 5 V
- Power consumption: max. 500 mA

Environmental

- Plastic housing
- Dimensions, Model 157025: 96 (L) x 61 (W) x 24 (H) mm (3.8 x 2.4 x 0.9 in.); 0.7 kg (1.59 lbs.)
- Dimensions, Model 157032: 164 (L) 72 (W) 26 (H) mm (6.5 x 2.8 x 1.0 in.); 1.5 kg (3.4 lbs.)
- Operating temperature: 0 – 40°C (32 – 104°F)
- Operating humidity: 0 – 90% RH, non-condensing
- Storage temperature: -20 – 60°C (-4 – 140°F)



www.intellinet-network.com

Are you completely satisfied with this product?
Please contact your INTELLINET NETWORK SOLUTIONS™ dealer
with comments or questions.

Copyright © INTELLINET NETWORK SOLUTIONS

All products mentioned are trademarks or registered trademarks of their respective owners.

Download from Www.Somanuals.com. All Manuals Search And Download.

Free Manuals Download Website

<http://myh66.com>

<http://usermanuals.us>

<http://www.somanuals.com>

<http://www.4manuals.cc>

<http://www.manual-lib.com>

<http://www.404manual.com>

<http://www.luxmanual.com>

<http://aubethermostatmanual.com>

Golf course search by state

<http://golfingnear.com>

Email search by domain

<http://emailbydomain.com>

Auto manuals search

<http://auto.somanuals.com>

TV manuals search

<http://tv.somanuals.com>