



**INTELLINET**  
NETWORK SOLUTIONS

BRINGING NETWORKS TO LIFE



# High Speed Broadband Router

**VPN, QoS, 4-Port 10/100 Mbps LAN Switch**

**Combines router, firewall and 4-port Fast Ethernet Switch.**

**Model**  
523608

The INTELLINET NETWORK SOLUTIONS™ High Speed Broadband Router lets you experience fast speeds as you surf the Web, download music or photos, and play online games. This versatile router protects your network with a built-in firewall. It will hide your network using NAT, and protect it further using the anti-DOS firewall. You can use the VPN server to support up to five secure network connections, and even give your most important applications priority access to precious bandwidth using QoS.

## Versatile

The High Speed Broadband Router combines many features into a single device, allowing you to optimize the network connection for multiple users while keeping the network secure. With a DHCP server that automatically assigns IP addresses to users on the LAN, and UPnP that supports gaming, it can be used in a small business setting or a home network. The WAN Connection Wizard makes installation a snap.

## Secure

Keeping intruders out of your network can be a challenge, and this feature-rich router is designed to make that seemingly daunting task easier. It includes a true firewall that secures your network against hackers. With Network Address Translation (NAT) to shield your networked devices from intruders, Denial of Service (DoS) attack prevention to avert potential threats by scanning incoming traffic, and content control using URL and domain filtering, you can rest assured that you have taken the necessary precautions to protect the data on your network. And as if this were not enough, the built-in VPN server supports up to five connections simultaneously, ideal for telecommuters who need a more secure connection to the Internet.

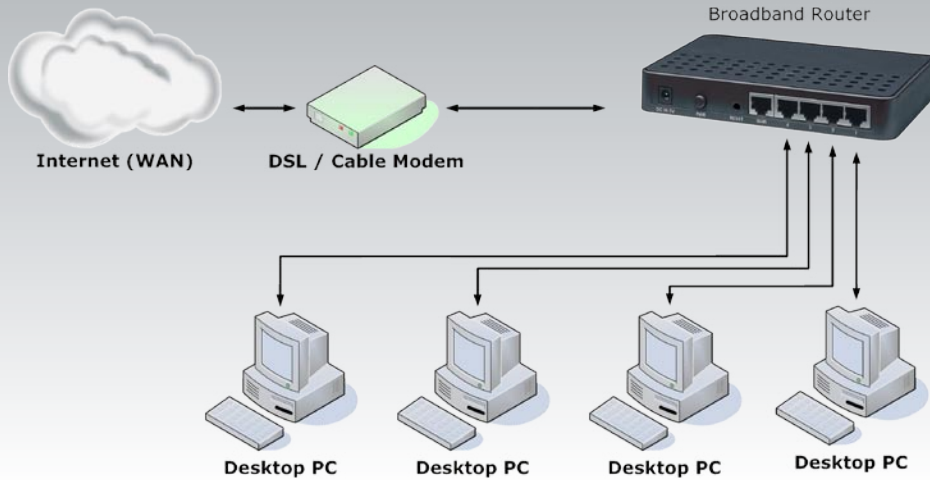
## Efficient

As you add more applications to your network, and as technology continues to advance, you need to be able to optimize the precious bandwidth on your Internet access facility. The Quality of Service (QoS) feature allows you to determine which applications are most important, and ensure they have priority with available bandwidth during network peak times so the applications that are most important to you are running their best.

## Lifetime Warranty

Strict manufacturing standards ensure the highest quality in all INTELLINET NETWORK SOLUTIONS products. All items carry a full Lifetime Warranty — the strongest quality commitment anyone can make.





**LIFETIME WARRANTY**

**Model 523608**

## Features

- Integrated 10/100 Mbps LAN switch with Auto MDI/MDI-X support
- Easy Internet setup through WAN connection wizard
- DHCP server assigns IP addresses for all LAN users
- Supports virtual server, port forwarding and DMZ (demilitarized zone)
- Supports DDNS (dynamic DNS)
- Supports UPNP (Universal Plug and Play)
- VPN server (PPTP) supports five connections simultaneously
- Supports VPN pass-through (IPSec, PPTP, L2TP)
- 94 Mbps WAN to LAN throughput for wired networks
- Supports QoS (Quality of Service) bandwidth management
- Integrated anti-DOS firewall
- WOL (Wake-On LAN) function sends a wakeup signal to any computer in the LAN
- Integrated scheduler to limit Internet access to client computers in the LAN
- Content control through URL and domain filter
- Remote management function (enable/disable and management port)
- Easy installation through Web-based user interface
- Firmware updates via Web-based user interface
- Lifetime Warranty

## Specifications

### STANDARDS

- IEEE 802.3 (10Base-T Ethernet)
- IEEE 802.3u (100Base-TX Fast Ethernet)

### GENERAL

- LAN ports: 4 RJ-45 10/100 Mbps data ports
- LAN ports with Auto MDI/MDI-X
- LAN to WAN throughput: 94 Mbps
- Flash: 2 MB
- Memory: 16 MB SDRAM
- Certifications: FCC Class B, CE Mark, RoHS

### ROUTER

- Chipset: KS8695PX (ARM9 CPU)
- Supported WAN connection types:
  - Dynamic IP (DHCP for cable service)
  - Static IP
  - PPPoE (for DSL)
- Protocols:
  - CSMA/CA
  - CSMA/CD
  - TCP/IP
  - UDP
  - ICMP
  - PPPoE
  - NTP
  - NAT (network address translation)
  - DHCP
  - DNS
- NAT:
  - Virtual server
  - Port forwarding
  - Special applications (port trigger)
  - DMZ (demilitarized zone)
- Firewall:
  - Access control based on MAC address
  - Domain blocking
  - URL filter

- Supports UPNP (Universal Plug and Play)
- Supports DHCP (client/server)
- Supports PPPoE (DSL), DHCP (cable) and static IP
- Supports VPN PPTP pass-through
- Certifications: FCC Class B, CE Mark, RoHS

### LEDs

- Power
- OP (operational status)
- Power Line Link/Act
- WAN Link/Act
- LAN 1-4 Link/Act

### ENVIRONMENTAL

- Dimensions: 164 (W) x 108 (L) x 30 (H) mm (6.5 x 4.3 x 1.2 in.)
- Weight: 1.0 kg (2.2 lbs.)
- Operating temperature: 0 – 55°C (32 – 122°F)
- Operating humidity: 10 – 95% RH, non-condensing
- Storage temperature: 0 – 60°C (0 – 149°F)

### POWER

- External power adapter: 5.0 V DC, 1.0 A

### PACKAGE CONTENTS

- High Speed Broadband Router
- User manual
- Power cord
- Ethernet Cat5 RJ-45 cable, 1.5 m (5 ft.)

For more information on INTELLINET NETWORK SOLUTIONS products, consult your local dealer or visit [www.intellinet-network.com](http://www.intellinet-network.com).

  
**INTELLINET**  
 NETWORK SOLUTIONS  
 BRINGING NETWORKS TO LIFE

Copyright © INTELLINET NETWORK SOLUTIONS

All names of products or services mentioned herein are trademarks or registered trademarks of their respective owners. Distribution and reproduction of this document, and use and disclosure of the contents herein, are prohibited unless specifically authorized.

INT-523608-DS-0207-01

## Free Manuals Download Website

<http://myh66.com>

<http://usermanuals.us>

<http://www.somanuals.com>

<http://www.4manuals.cc>

<http://www.manual-lib.com>

<http://www.404manual.com>

<http://www.luxmanual.com>

<http://aubethermostatmanual.com>

Golf course search by state

<http://golfingnear.com>

Email search by domain

<http://emailbydomain.com>

Auto manuals search

<http://auto.somanuals.com>

TV manuals search

<http://tv.somanuals.com>