

VERSAPPOINT®

RF

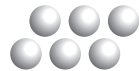
**WIRELESS
KEYBOARD**



- 360° navigation
- Sleek and elegant
- 8 address pairs to eliminate interference
- Compatible with the new RemotePoint RF

User's Guide

Version 1.1



**INTERLINK
ELECTRONICS**

VersaPointRF® Wireless Keyboard User's Guide

Version 1.1

P/N 90-15730 1/01

2001 © Interlink Electronics, Inc. All Rights Reserved.

Interlink Electronics, the 6 dot logo, VersaPoint and VersaPad are registered trademarks of Interlink Electronics, Inc. All other trademarks are the property of their respective owners.

Protected by the following U.S. and Foreign patents: 4,489,302; 5,296,837; 5,302,936; 5,659,334; 5,828,363; 5,847,639; 6,084,572; and one or more of the following International Patent Applications: DE-4236187A1; EP-91-120226.5; and other U.S. and International patents pending.



1. Introduction Page 1

2. Getting Started Page 2
 System Requirements
 Installing the Keyboard Batteries
 Connecting the Receiver
 Selecting an Address
 Positioning the Receiver

3. Using the Keyboard Page 6
 Function (Fn) Key
 Numeric Keypad
 Status Indicators
 Keyboard Range
 Battery Life

**4. Using VersaPoint® Pressure
 Pointing Technology Page 9**
 Moving the Cursor
 Click Buttons

5. Troubleshooting Page 10
 Appendix A – General Specifications
 Appendix B – Technical Support
 Appendix C – Warranty
 Appendix D – FCC Certification
 Canadian conformance



**About the
VersaPointRF®
Wireless
Keyboard**

Your new VersaPointRF Wireless Keyboard combines pointing mouse functionality with touch typing, all in a convenient wireless package. It's perfect for relaxed Internet browsing, video conferencing, or everyday computing.

**Included in
the Box:**

- VersaPointRF Wireless Keyboard
- VersaPointRF Wireless Keyboard receiver with 6' cable for USB connection
- VersaPointRF Wireless Keyboard User's Guide* with tear out Registration Card
- 4 – AA alkaline batteries

**Optional
Equipment**

- RemotePointRF
Interlink's cordless pointing device is the perfect companion for your RF keyboard. If your system does not include one, contact your dealer today.

* If your package includes a CD ROM, the User's Guide is located on the CD



- System Requirements**
- IBM PC compatible computer
 - USB port available
 - Microsoft Windows 98 or higher

- Installing the Keyboard Batteries**
1. Turn the keyboard over onto its face.
 2. By pressing the latch tab toward the center of the keyboard, pry open the battery door with your fingers.
 3. Insert 4 AA alkaline batteries (included) with the positive (+) and negative (-) orientation as shown inside the compartment (negative is at the flat end of the battery and goes toward the spring).
 4. Replace the battery door by ensuring both retaining tabs fit into their slots and the latch tab snaps into place.

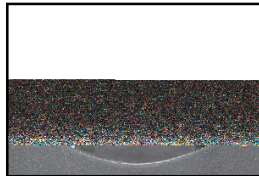
- Connecting the Receiver**
1. Shut down Windows and turn off your computer.
 2. Locate an enabled USB port on the back of your computer.
 3. Plug the connector on the end of the receiver cable into the USB port on your computer.
 4. Start Windows and follow the on-screen instructions to enable/install the Windows drivers for the USB. keyboard and mouse as needed.

Selecting an Address

The address on which your keyboard and receiver communicate is pre-set at the factory. The factory setting is address 1. In most situations this will never need adjustment. However, if you are operating several RF devices in close proximity, or there are interfering sources, you may need to change the address from the factory setting. We recommend that you first try the system out to be sure that you need to change addresses. There are 8 possible addresses to choose from. The 8 addresses are selected thru 4 switches. Both the keyboard and receiver must be set to the same address.

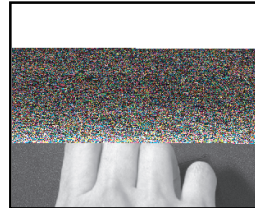
Changing the Keyboard Address

1. Open the battery door on the backside of the keyboard and remove the batteries. (See “**Installing the Keyboard Batteries**” section on the previous page).



Notice the cutout hole in the center of the battery compartment, visible once the batteries are removed.

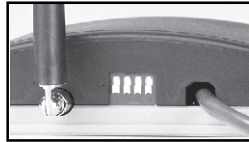
2. Use a small pointed tool (such as a pencil) to set the switches that are located inside the cutout hole. Address selection is made per the chart below (which is labeled inside the battery door cover).



Address	Switch Settings				Address	Switch Settings			
	1	2	3	4		5	6	7	8
1	☐	☐	☐	☐	5	☐	☐	☐	☐
2	☐	☐	☐	☐	6	☐	☐	☐	☐
3	☐	☐	☐	☐	7	☐	☐	☐	☐
4	☐	☐	☐	☐	8	☐	☐	☐	☐

Changing the Receiver Address

1. Locate the slot cutout on the back of the receiver between the antenna and the cable. The switches can be seen inside the cutout slot.



2. The receiver must be set to the same address as the keyboard described above. The switches are set in the same way as those on the keyboard using the table above.

Power your computer back on.

Position the receiver as described in the next section.

Positioning the Receiver

The receiver is multi-positional and the antenna can be articulated. If you are placing it on a table or desktop, it is best to stand the antenna up to minimize any disruption of the signal by the table or desk.

When you are mounting or positioning the receiver, be careful not to locate the antenna too close to metal objects. The keyboard should not be placed too close to metal objects.

**Testing the
Keyboard**

1. Point the keyboard in the general direction of the receiver.
2. Move your finger around on the mouse button. The cursor should move on the screen.

Your new VersaPointRF Wireless Keyboard is now ready for use. No special software is required and it can be used with your current installed drivers.



The VersaPointRF Wireless Keyboard operates like a traditional wired computer keyboard, except that it requires no cable to your computer. That is, simply point it in the general direction of the receiver and type on it. There are, however, a few unique features:

Function (Fn) Key The VersaPointRF Wireless Keyboard achieves the functionality of 104 keys with only 88 keys within a very compact size. To accomplish this, some keys are used more than once. The **Fn** key located at the lower left corner of the key matrix and several other keys have legends delineated with light blue letters to indicate multiple function. For example, when the **Fn** key is depressed followed by the **F12** key, Insert mode is toggled. This is indicated by the abbreviation **Ins** printed in light blue on the same F12 key.

Numeric Keypad Again to save space, the VersaPointRF Wireless Keyboard has its numeric keypad built in, using some existing keys twice. The numeric keypad is laid out on the right side of the keyboard, in a format similar to the keypad on a full size keyboard and has the keypad functions marked in blue. To activate the keypad, simply press the **Num Lock** key. The indicator LED on the receiver will light and the marked keys on the right side of the keyboard will change to their keypad functions.

Status Indicators To indicate the status of the Num Lock, Caps Lock and Scroll Lock keys, indicator LED's are built into the receiver.

Keyboard Range Using conventional touchpads in battery powered wireless keyboards, it has been an unrealized challenge to get adequate range without excessive battery consumption. By using Interlink Electronics patented VersaPoint mouse technology combined with advanced battery conservation methods and sleep modes, the VersaPoint RF Wireless Keyboard easily achieves excellent range and exceptional battery life.

Indoors operating ranges will be up 100', and, under ideal conditions, more than that. Naturally, individual results will vary depending on how you use your keyboard.

Battery Life Both the keyboard circuitry and the VersaPoint mouse make use of the latest advances in low-power integrated circuit technology. Both also employ what is known as "sleep mode." When nothing is being typed on the keyboard, the radio circuitry and the keyboard processor go to "sleep," consuming a mere fraction of their normal power requirements, while waiting for the next key press.

Under normal usage, battery life of up to 6 months will be typical. Again, your results will depend on how you use your keyboard.

Battery Life
continued

When it finally comes time for battery replacement, you may begin to notice a reduction in range, typified by lost keys at longer distances. In addition, the low battery indicator located above the keys will illuminate when batteries are approaching the end of life. We strongly recommend the use of alkaline batteries only. Please remember to dispose of depleted batteries properly.



Moving the Cursor Total cursor control is available through the touch of your thumb using the VersaPoint Pressure Pointing Technology. Its intuitive and feels natural. Where you place your thumb or finger on the soft button and apply pressure dictates the direction of cursor movement. Pressing harder causes the cursor to move more quickly. It is easy for many users to place their thumb at the center of the button and rock it in the direction desired for cursor movement.

Click Buttons Like a normal mouse, the VersaPoint RF Wireless Keyboard has left and right click buttons. These are located next to each other on the upper left side of the keyboard unit. In addition, two extra left click buttons can be found on the forward edge of the unit to enable simple index finger actuation.





If you have connected your VersaPointRF Wireless Keyboard receiver and are having difficulties, please consult these troubleshooting guidelines.

Keyboard Does Not Send Keys

- Check your connections – make sure the receiver is securely plugged into your computer's USB port.
- Assure that the keyboard is pointed generally toward the receiver.
- Install fresh batteries.
- Check to make sure both the receiver and keyboard are set to the same address.
- Check to make sure your USB port is active. If not, refresh the USB controller by accessing the Device Manager under System Properties.

Cursor Does Not Move

- Check your connections – make sure the receiver is securely plugged into your computer's USB port.
- Assure that the keyboard is pointed generally toward the receiver.
- Install fresh batteries.
- Try restarting Windows – Windows can be very sensitive to its treatment of memory and resources. Sometimes restarting and/or powering the computer off and back on will restore cursor motion.
- Try the receiver on USB port, if available.
- Check to make sure both the receiver and keyboard are set to the same address.

Reduced Range or Lost Keys at Longer Ranges

- Install fresh batteries.
- Assure nothing is blocking the receiver antenna.
- Relocate the receiver.
- Make sure keyboard and receiver are not close to metal objects.



Model Number	VP6210
Technology:	Omnidirectional RF
Number of Keys:	88 (equal to 104 when combined with the Fn Key)
Carrier Frequency:	916 MHz
Effective Operating Range:	Up to 100 feet (30 meters) typical
Battery Life:	Up to 6 months typical
Power:	4 - AA alkaline batteries 6VDC (included)
Temperature:	Operating: 32°F to 122°F (0°C to 50°C) Storage: -4°F to 158°F (-20°C to 70°C)
Keyboard dimensions:	15.3" x 7.0" x 1.7"
Keyboard weight:	1 lb., 8 oz.
Receiver dimensions:	3.0" x 3.5" x 1.0"
Antenna:	3.9" articulating
Receiver connector:	USB



If you have any difficulties installing or using your VersaPoint RF Wireless Keyboard, please re-check the Troubleshooting section of this User's Guide. If you are still unable to solve the problem, please call our Product Support team for assistance.

Product Support

(800) 340-1331

Hours: 8 am to 5 pm, PST

Tel: (805) 484-1331

Fax: (805) 484-8989

Email: support@interlinkelec.com

Please have ready the following information:

- Date and place of purchase
- Brand and model of computer (e.g., IBM PC Pentium 1)
- Operating software you use with this product (Win 2000, etc.)



1. **What product is covered by this warranty?** The following product (“the Product”) is covered by this warranty: **VersaPointRF Wireless Keyboard.**
2. **What does this warranty cover?** Interlink Electronics, Inc. (“Interlink”) warrants to the original end-user purchaser of the Product (“you”) that the Product will be free from defects in materials or workmanship under normal use and service during the warranty period described in Paragraphs 3 and 4.
3. **When does your warranty begin?** The warranty will begin on the day you purchase the Product. Dated proof of purchase is necessary to accompany the Product returned for warranty service consideration. Valid proof of purchase must identify the point of purchase, date of purchase, and product model or trade name. Ordinarily, your sales receipt or invoice will suffice.
4. **How long does the coverage last?** The warranty for the Product, excluding Batteries, is as follows:

LIMITED ONE YEAR PARTS AND LABOR

5. **What will Interlink do if the product becomes defective in materials or workmanship during the warranty period?** If the Product covered under this warranty becomes defective in materials or workmanship during the applicable warranty period, INTERLINK will, at its option, either repair the defective Product without charge for parts and labor, or provide a replacement in exchange for the defective Product. INTERLINK reserves the right to provide, at no additional cost, a more current or upgraded model for replacement, if available.
6. **What is not covered by this warranty?** (a) This warranty does not extend to: (i) Products which have been subjected to misuse, accident, physical damage, improper installation, abnormal operation or handling, neglect, inundation or fire, or; (ii) Products which have been damaged due to repair, alteration or modification by anyone other than an authorized representative of INTERLINK, or; (iii) Defects caused by components, parts, or accessories not compatible with the warranted Product, or; (iv) Products whose warranty/quality stickers, product serial number plates or electronic serial numbers have been removed, altered or rendered illegible, or; (v) Accessory items. (b) ANY OTHER WARRANTIES, INCLUDING BUT NOT LIMITED TO THE IMPLIED WARRANTIES OF MERCHANTABILITY AND FITNESS FOR PARTICULAR PURPOSE, SHALL BE LIMITED IN DURATION TO THE DURATION OF THIS WARRANTY. SOME STATES DO NOT ALLOW LIMITATIONS ON HOW LONG AN IMPLIED WARRANTY LASTS, SO THE ABOVE LIMITATION MAY NOT APPLY TO YOU. (c) INTERLINK’S TOTAL LIABILITY FOR DAMAGES FOR ANY CAUSE RELATED TO, OR ARISING OUT OF, THE USE OR INABILITY TO USE THE PRODUCT, WHETHER IN CONTRACT, NEGLIGENCE, STRICT TORT OR BASED ON ANY OTHER LEGAL THEORY, SHALL NOT EXCEED THE ORIGINAL PRICE PAID FOR THE PRODUCT. (d) IN NO CASE SHALL INTERLINK BE LIABLE FOR ANY INDIRECT SPECIAL, INCIDENTAL, OR CONSEQUENTIAL DAMAGES BASED UPON BREACH OF WARRANTY, BREACH OF CONTRACT,

NEGLIGENCE, STRICT TORT OR ANY OTHER LEGAL THEORY. SUCH DAMAGES INCLUDE, BUT ARE NOT LIMITED TO, LOSS OF PROFITS, LOSS OF SAVINGS OR REVENUES, INABILITY TO USE THE PRODUCT OR ANY ASSOCIATED EQUIPMENT, COST OF CAPITAL, COST OF ANY SUBSTITUTE EQUIPMENT, FACILITIES OR SERVICES, CLAIMS BY THIRD PARTIES OTHER THAN YOU, AND INJURY TO PROPERTY. SOME STATES DO NOT ALLOW THE EXCLUSION OR LIMITATION OF INCIDENTAL OR CONSEQUENTIAL DAMAGES, SO THE ABOVE LIMITATION OR EXCLUSION MAY NOT APPLY TO YOU.

- 7. How do you get warranty service?** If your Product requires warranty service, you must first contact Product Support to receive an RMA Number. The tele-phone numbers for Product Support are (800) 340-1331 and (805) 484-8989. Once you obtain an RMA Number, you must return the Product to INTER-LINK, postage prepaid, along with a description of the Product malfunction or difficulty and your RMA Number. You must also substantiate warranty status with a dated proof of purchase (as explained in paragraph 3), inclusive of Product's serial number. The address where you should send the Product to receive warranty service is:

Product Support
INTERLINK ELECTRONICS, INC.
546 Flynn Road, Camarillo, CA 93012
RMA Number _____

INTERLINK assumes no risk for damage or loss in shipment. If, in INTERLINK's sole opinion, the Product failure is not covered under this warranty you will be notified and an authorization will be requested for any further repair activity. Products repaired under warranty will be returned to you, transportation prepaid. You must pay return shipping costs for the Products repaired which are not covered by warranty or the Products for which you do not wish to authorize repairs.

- 8. How does state law apply to this warranty?** This warranty gives you specific legal rights, and you may also have other rights which vary from state to state.
- 9. Attorney fees:** If any legal actions arises relating to this warranty, the prevailing party shall be entitled to recover, in addition to other damages, all court costs, expenses and reasonable attorney fees.
- 10. This warranty is the entire agreement.** Unless modified in writing, signed by both you and INTERLINK, this warranty is understood to be the complete and exclusive agreement between the parties, superseding all prior agreements, oral or written, and all other communications between the parties relating to the subject matter of this warranty. No agent or employee of INTERLINK may make modifications to this warranty and any such representations should not be relied upon.

For more information, please contact PRODUCT SUPPORT at
(800) 340-1331 or (805) 484-8989

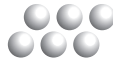


This device complies with Part 15 of the FCC Rules. Operation is subject to the following two conditions: (1) This device may not cause harmful interference, and (2) This device must accept any interference received, including interference that may cause undesired operation. This equipment has been tested and found to comply with the limits for a CLASS B digital device, pursuant to Part 15 of FCC Rules. These limits are designed to provide reasonable protection against harmful interference when the equipment is operated in a residential installation. This equipment generates, uses, and can radiate radio frequency energy and if not installed and used in accordance with the instruction guide, may cause harmful interference to radio communications. However, there is no guarantee that this radio interference will not occur in a particular installation. If this equipment does cause harmful interference to radio or television reception, which can be determined by turning the equipment on and off, the user is encouraged to try to correct the interference by one or more of the following measures:

- Re-orient or relocate the receiving antenna.
- Increase the separation between the equipment and receiver.
- Connect the equipment into an outlet on a circuit different from that to which the receiver is connected.
- Consult the dealer or an experienced radio-TV technician for help.

Notice: Any changes or modifications not expressly approved by the party responsible for compliance could void the user's authority to operate the equipment. This product is equipped with shielded cable. Extension cables, if used, must be shielded in order to comply with the emission limits.

Canadian conformance This Class B digital apparatus meets all requirements of the Canadian Interference-Causing Equipment Regulations.



I N T E R L I N K
E L E C T R O N I C S

546 Flynn Road • Camarillo, CA 93012
(805) 484-8855 • Fax (805) 484-8989
www.interlinkelectronics.com

Free Manuals Download Website

<http://myh66.com>

<http://usermanuals.us>

<http://www.somanuals.com>

<http://www.4manuals.cc>

<http://www.manual-lib.com>

<http://www.404manual.com>

<http://www.luxmanual.com>

<http://aubethermostatmanual.com>

Golf course search by state

<http://golfingnear.com>

Email search by domain

<http://emailbydomain.com>

Auto manuals search

<http://auto.somanuals.com>

TV manuals search

<http://tv.somanuals.com>