



**Yes, you can:**

## Invacare® microAIR® MA60 & MA65 Alternating Pressure Mattresses

---



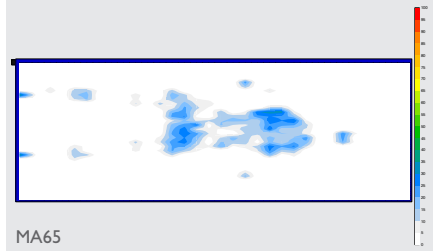
MA65  
with raised side rails (RSR)  
shown on CS7™ bed  
with ThinkSoft® Positioning Device

These two (2) microAIR® alternating pressure mattress models reduce interface pressure to aid in the prevention and the treatment of Stage I to Stage IV pressure ulcers with a state-of-the-art 50 LPM compressor that inflates the mattress within 5-10 minutes and provides faster, more efficient and complete therapy cycles.

# Invacare® microAIR® MA60 & MA65 Alternating Pressure Mattresses



## Body Interface Pressure Imaging Test

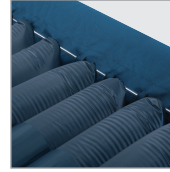


Test demonstrates contact measurement between key pressure points. Subject is 5'5" female, 110 lbs Simulation. Individual resident results will vary.



### User-Friendly Control Unit

Lightweight unit with LED display and up down arrows for easy adjustment of comfort and therapy settings



### Quick-Connect Air Cells

Quick-connect air cells allow easy replacement of individual cells if necessary



### 90 degree Hose Quick-Connect

Simplifies set-up with one motion



### On-Demand Low Air Loss

When activated at the push of a button, air is released inside the MA65 mattress to keep the mattress cooler and dryer for the resident

## Specifications

- Resident Risk Level : Medium-High
- Cover : Dual-layered, quilted, anti-microbial, fluid resistant vapor-permeable cover protects internal cells. Bottom cover is 1000 Denier nylon
- Limited Warranty : 1 year on mattress, 2 years on power unit
- Power Unit : 50 LPM
- Internal cells : 70 Denier urethane coated nylon

## Features

- Efficient real-time monitoring for correct pressure relief
- 2" safety foam base adds safety and comfort
- CPR release built into mattress
- Built-in carrying straps for easy transportation
- 50 LPM compressor quickly inflates mattress
- Power outage safety with mattress hose is connected to the compressor
- Settings retained during a power outage will resume once power is restored
- Manual fowler to prevent accidental bottoming out
- Energy-saving compressor turns "off" when not needed during pressure maintenance modes
- MA65 includes on-demand low air loss

	MA60	MA65	Bariatric	
			MA65B42	MA65B48
Width	36"	36"	42"	48"
Depth	10"	10"	10"	10"
Weight Capacity	350 lbs.	350 lbs.	1,000 lbs.	1,000 lbs.
Available with Raised Side Rails (RSR)	*	*	n/a	n/a

**Invacare Continuing Care, Inc.**    [www.invacare-ccg.com](http://www.invacare-ccg.com)    [info\\_iccg@invacare.com](mailto:info_iccg@invacare.com)

**USA**  
One Invacare Way  
Elyria, Ohio 44035  
USA  
800-668-2337

**Canada**  
994 Hargrieve Road  
London, Ontario  
N6E 1P5 Canada  
800-668-2337

For more information, contact your Invacare Continuing Care Sales Representative at 1.800.668.2337 or visit [www.invacare-ccg.com](http://www.invacare-ccg.com).

© 2009 Invacare Continuing Care, Inc. All rights reserved. Trademarks are identified by the symbols ™ and ®. All trademarks are owned by or licensed to Invacare Corporation unless otherwise noted. Specifications are subject to change without notification.

Form 08.67.9/09



**Yes, you can.**

## Free Manuals Download Website

<http://myh66.com>

<http://usermanuals.us>

<http://www.somanuals.com>

<http://www.4manuals.cc>

<http://www.manual-lib.com>

<http://www.404manual.com>

<http://www.luxmanual.com>

<http://aubethermostatmanual.com>

Golf course search by state

<http://golfingnear.com>

Email search by domain

<http://emailbydomain.com>

Auto manuals search

<http://auto.somanuals.com>

TV manuals search

<http://tv.somanuals.com>