



Installation Guide

Wireless USB Host Adapter

GUWA200
PART NO. M1070



Table of Contents

System Requirements	4	Frequently Asked Questions	18
Important Information	5	Technical Specifications	20
Package Contents	6	Limited Warranty	21
Device Overview	7	Federal Communications Commission (FCC) Statement	22
Installation	8	Contact	23
Software Installation	9	Appendix	24
Connecting Wireless USB Host Adapter	12	Compatibility with GUWH104KIT	24
Wireless USB Manager	14	Cable association with Wireless USB devices	25
Wireless USB Host Adapter Settings	16		

System Requirements

- Microsoft Windows® XP 32-bit (Service Pack 2)
- Microsoft Windows® Vista® 32/64-bit
- USB 2.0 Compliant hardware and system

Important Information

Before you get started, please NOTE:

Do not place Wireless USB adapter under direct sunlight or near high heat emitting devices;

Do not place Wireless USB adapter near water or wet surfaces to avoid electric hazards;

Do not place Wireless USB adapter on any moving or unstable surfaces.

Package Contents

- 1 x Wireless USB Host Adapter (for PC)
- 1 x USB 2.0 Extension Cable (5 ft.)
- 1 x Quick Start Guide
- 1 x Registration / Warranty Card
- 1 x Installation CD (with User Manual)

Device Overview

Wireless USB Host Adapter

1. LINK: Data Transfer Activity Indicator
 - a. LED blinks when data is being transferred
2. PWR: Power
 - a. LED is solid when powered by the PC



Installation

Please always check www.iogear.com for the latest drivers.

IMPORTANT NOTE:

If you purchase the hub kit GUWH104KIT, please refer to Appendix “Compatibility with GUWH104KIT” of this User’s Manual in the CD-ROM for important information regarding steps to perform before the installation of the Wireless USB Host Adapter.

Before installing the Wireless USB Host Adapter GUWA200 software, please make sure that the Wireless USB Host Adapter and other Wireless USB device are **not** connected to the computer and the Wireless USB device is **not** powered.

Software Installation

Notes:

1. If installing on Windows XP, Service Pack 2 (SP2) is required. Please Verify that SP2 has been installed on your PC before proceeding with the UWB installation software.
2. Microsoft .NET Framework 2.0 is required by the driver software. Once you begin the software installation, if .NET Framework 2.0 is not installed on your PC, the software will automatically prompt you to install it before proceeding to the UWB software installation.

Step 1 – Insert installation CD into the CD drive on your computer.

Step 2 – Select “**Software Installation**” from the menu.



Step 3 – The next screen will let you choose whether to install the latest software from the IOGEAR website or to install the software directly from the installation CD.

By choosing Option 2: **Download latest software installer from the Web**, a web browser window will launch directing you to the IOGEAR website where you'll find the most up-to-date software. Once you download the software, double-click on the .exe file to begin the installation process.

If selecting Option 1: **Install directly from CD**, the installation will start automatically.





Step 4 – If you previously installed the GUWH104KIT software, then you will be prompted to remove the software from your computer. For more information, please see Appendix.

Step 5 – For **Windows XP** users, if you do not have Microsoft .NET Framework 2.0 installed, you will be prompted to have it installed.

1. Click “Yes” to install .NET 2.0 Framework
2. Check “License Agreement” and click “Install”
3. Click “Finish” to complete installing .NET Framework 2.0
4. Restart the computer when prompted
5. Eject your CD and go to Step 1.

Important: After the wizard has finished installing the software, reboot your computer if prompted to do so.

Connecting Wireless USB Host Adapter

Once you connect the Wireless USB Host Adapter to your computer, its drivers will be installed automatically.

There are 2 options to connect the Wireless USB Host Adapter to your computer.

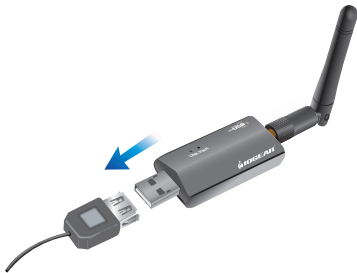
Option 1

Verify that the antenna on the Wireless USB Host Adapter is securely attached and pointed in a vertical position. Plug the Wireless USB Host Adapter into an available USB 2.0 port on your computer.



Option 2

If using a Desktop PC, plug the Wireless USB Host Adapter into an available USB 2.0 port utilizing the provided extension cable. Place the extension cable on a flat surface, preferably the top of the desk/work area in order to ensure a good line-of-sight signal with your "Certified Wireless USB device".



Once the Wireless USB Host Adapter has been installed properly you will have the ability to connect to your "Certified Wireless USB device". You will need to follow the instructions set forth by the manufacturer of your Wireless USB device for its own software installation and associating to the PC to gain full functionality of the Wireless USB Host Adapter.

Upon finishing this process you will be ready to use your Wireless USB Host adapter and enjoy your new Wireless USB device.

Congratulations, your Wireless USB Host Adapter is ready for use.

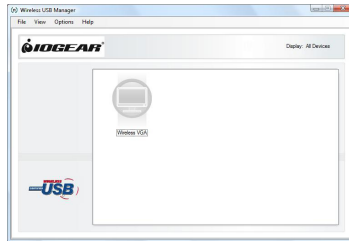
Wireless USB Manager

The Wireless USB Manager is a simple and easy-to-use interface that allows you to manage your Wireless USB devices and control your Wireless USB Host Adapter settings. The Wireless USB Manager can be accessed via the Wireless USB Manager icon located in the Windows system tray.



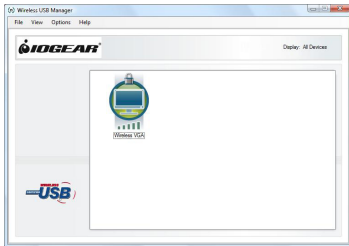
To launch the Wireless USB Manager, double click on the Wireless USB Manager icon. On the main pane, you will find an icon representing your "Certified Wireless USB Device". If your Wireless USB device is not connected, the icon will be grayed out.

Illustrator below is for your reference.



If your Wireless USB device is connected and working, then the icon will change and show the current signal strength.

Illustrator below is for your reference.



The **View** menu will give the option of what type of devices you wish to display (All Devices, Connected Devices and Disconnected Devices).

The **Options** menu will give the option to launch Host Settings window and turn the Wireless USB Host Adapter radio on or off.

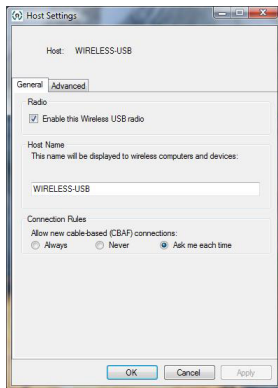
The **Help** menu offers quick help on how to connect devices to your Wireless USB Host Adapter.

Wireless USB Host Adapter Settings

To manage the Wireless USB Host Adapter settings, either select “Host Settings” in the “Option” menu of the Wireless USB Manager application or right click on the Wireless USB Manager icon in the Windows tray.

• General Settings

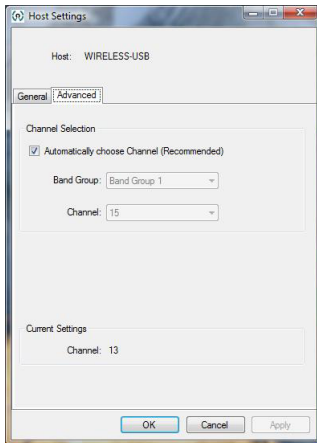
1. Enable the Wireless USB radio: turn on or off the Wireless USB radio.
2. Host name: Change the name of your Wireless USB Host Adapter.
3. Cable association connection rules: Always, Never or Ask me each time. By default Wireless USB will ask you each time to do the cable association.



• **Advanced** Settings

Channel selection: this function allows you to manually set a radio channel (not recommended) for the wireless communication (combination of Band Group and Channel).

For optimal performance, the automatic setting is recommended.



Frequently Asked Questions

For the latest FAQs, please go to IOGEAR website (www.iogear.com).

1. Why can't I install .NET?

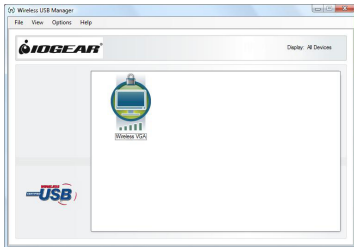
You may have an older version of .net, preventing the newer one from being installed. Using Add/Remove Programs or Programs and Features on the Control Panel, uninstall any version of Microsoft .NET Framework older than version 2.0. Then install Microsoft .NET Framework from the Wireless USB Host Adapter installer.

2. My Wireless USB Host Adapter is plugged into my computer and my Wireless USB device is powered but I do not see anything on my display. What's wrong?

Check the Wireless USB Manager to see if there is an icon for your Wireless USB device. If there is no icon, try unplugging and plugging-in your Wireless USB Host Adapter to reload the Wireless USB device driver.

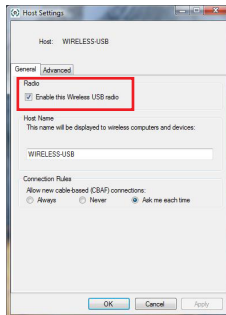
If you see an icon that is grayed out in the Wireless USB Manager, try resetting the Wireless USB device adapter by unplugging its power cord and plugging it back in. You should see the icon in the Wireless USB Manager appear in color when it is connected.

Illustrator below is for your reference.



Still not connected?

Double check that the radio for your Wireless USB Host Adapter is **Enabled** in the Wireless USB Manager.



Technical Specifications

Function	GUWA200
Operating System Support	Microsoft XP 32-bit; Microsoft Vista 32/64-bit
PHY Data Rate	53.3Mbps, 80Mbps, 106.6Mbps, 160Mbps, 200Mbps, 320Mbps, 400Mbps, 480Mbps
Operating Range	Up to 30 feet (10 meters)
Frequency	3.1GHz to 4.8GHz (WiMedia Band Group 1)
Number of Channels	7 channels (3 FFI + 4 TFI)
RF Modulation Type	QPSK/DCM
Interface	USB
USB Specification	Certified Wireless USB 1.0; USB 2.0
Association Mode	Cable Association
Antenna Type	Omni directional
Power Consumption	Wireless USB Host Adapter: 1.2W

Limited Warranty

IN NO EVENT SHALL THE DIRECT VENDOR'S LIABILITY FOR DIRECT, INDIRECT, SPECIAL, INCIDENTAL OR CONSEQUENTIAL DAMAGES RESULTING FROM THE USE OF THE PRODUCT, DISK, OR ITS DOCUMENTATION EXCEED THE PRICE PAID FOR THE PRODUCT.

The direct vendor makes no warranty or representation, expressed, implied, or statutory with respect to the contents or use of this documentation, and especially disclaims its quality, performance, merchantability, or fitness for any particular purpose.

The direct vendor also reserves the right to revise or update the device or documentation without obligation to notify any individual or entity of such revisions, or updates. For further inquiries please contact IOGEAR.

Federal Communications Commission (FCC) Statement

This device complies with part 15 of the FCC Rules. Operation is subject to the following two conditions: (1) this device may not cause harmful interference, and (2) this device must accept any interference received, including interference that may cause undesired operation. This device is authorized under 47 CFR 15.519 (the FCC Rules and Regulations). The operation of this device is subject to the following restriction: This UWB device shall transmit only when it is sending information to an associated receiver. This UWB device shall cease transmission within 10 seconds unless it receives an acknowledgement from the associated receiver that its transmission is being received. An acknowledgement of reception must continue to be received by the transmitting device at least every 10 seconds of operation or the UWB device must cease transmitting.

Contact

IOGEAR

23 Hubble

Irvine, CA 92618

P 949.453.8782

F 949.453.8785

Visit us at: www.iogear.com

© 2008 IOGEAR® Part No. M1070

IOGEAR, the IOGEAR logo, are trademarks or registered trademarks of IOGEAR, Inc. Microsoft and Windows are registered trademarks of Microsoft Corporation. All other brand and product names are trademarks or registered trademarks of their respective holders. IOGEAR makes no warranty of any kind with regards to the information presented in this document. All information furnished here is for informational purposes only and is subject to change without notice. IOGEAR, Inc. assumes no responsibility for any inaccuracies or errors that may appear in this document.

Appendix

I. Compatibility with IOGEAR GUWH104KIT

Important: To retain the functionality of both the Wireless USB Host Adapter (GUWA200) and the GUWH104KIT, you MUST follow these steps:

1. Uninstall the GUWH104KIT software by using Add/Remove Programs or Programs and Features on the Control Panel. Please select and remove "Ultrasuite with WiCenter Basic". The Wireless USB Host Adapter (GUWA200) installer will not allow you to proceed until this software is removed.
2. Complete the installation of the Wireless USB Host Adapter as shown in the Software Installation section.
3. Install the GUWH104 software "Driver Hub Only" for your Wireless USB Hub from IOGEAR website. Please make sure that you are in the correct product page <http://www.iogear.com/support/dm/driver/GUWH104#display>.
4. Use the Wireless USB Host Adapter (GUWA200) to communicate with your Wireless USB Hub (GUWH104).

Note: After this upgrade, the Wireless USB Host Adapter (GUWA100U) will not function with the Wireless USB device or the Wireless USB Hub (GUWH104) on the PC system where the GUWA200 software has been installed. However you may use this Wireless USB Host Adapter (GUWA100U) on a different PC.

For more support information, please contact IOGEAR.



II. Cable association with Wireless USB devices

Association Concept:

In order to establish a secure wireless connection, between both the Wireless USB Host Adapter and the Wireless USB devices, you will need to go through the cable association process. The association process will allow the Wireless USB Host Adapter and the Wireless USB device to exchange security information about each other necessary to operate in a secured wireless mode.

Association Process:

Please refer to your Wireless USB device documentation for more information on its settings for cable association.

Cable association steps:

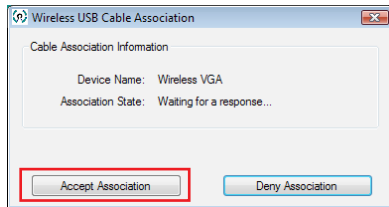
1. Make sure that the Wireless USB Manager is running. Check your Windows tray for the Wireless USB Manager icon.



2. Power on your Wireless USB device.
3. Connect the USB cable between an available USB port on your computer and your Wireless USB device.

4. Complete cable association by pressing the "Accept Association" button when prompted.

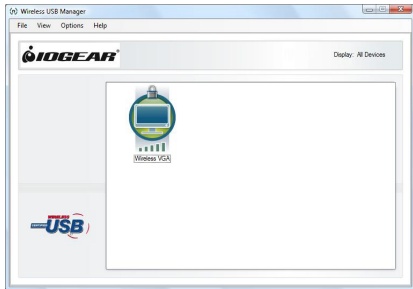
Illustration below is for your reference.



5. Remove the USB cable from your Wireless USB device and computer then follow instructions specific to your Wireless USB device for wireless operation.

Associated Wireless USB devices will appear as icons in the Wireless USB Manager. When the Wireless USB device is connected to your computer, the icon will appear in color.

Illustration on the right is for your reference.









About Us



FUN

IOGEAR offers connectivity solutions that are innovative, fun, and stylish, helping people enjoy daily life using our high technology products.



GREEN

IOGEAR is an environmentally conscious company that emphasizes the importance of conserving natural resources. The use of our technology solutions helps reduce electronic waste.



HEALTH

IOGEAR supports healthy and fit lifestyles. By integrating products with the latest scientific developments, IOGEAR's solutions enhance the life of end-users.

© 2008 IOGEAR®

Free Manuals Download Website

<http://myh66.com>

<http://usermanuals.us>

<http://www.somanuals.com>

<http://www.4manuals.cc>

<http://www.manual-lib.com>

<http://www.404manual.com>

<http://www.luxmanual.com>

<http://aubethermostatmanual.com>

Golf course search by state

<http://golfingnear.com>

Email search by domain

<http://emailbydomain.com>

Auto manuals search

<http://auto.somanuals.com>

TV manuals search

<http://tv.somanuals.com>