



Installation Guide

Wireless USB to VGA Adapter

GUW2015V
PART NO. M1063



Table of Contents

| | | | |
|--|----|---|----|
| System Requirements | 4 | Frequently Asked Questions | 25 |
| Important Information | 5 | Technical Specifications | 26 |
| Package Contents | 6 | Limited Warranty | 28 |
| Device Overview | 7 | Federal Communications Commission (FCC) Statement | 29 |
| Wireless USB VGA Software Installation | 9 | Contact | 30 |
| Cable Association with the Wireless USB Enabled PC | 12 | | |
| Connecting Wireless USB VGA Adapter | 16 | | |
| Wireless USB VGA Display Settings | 19 | | |
| Wireless USB VGA Adapter in wired mode | 24 | | |

System Requirements

- Microsoft Windows® XP 32-bit (Service Pack 2)
- Microsoft Windows® Vista® 32/64-bit
- Minimum CPU requirement: 2GHz (single core), memory: 1GB*
- Wireless USB enabled PC (embedded or via Wireless USB Host Adapter)
- USB 2.0 Compliant hardware and system
- Display with VGA port (VGA cable not included)

* In order to support 720p video, minimum system requirements CPU: 2GHz (single core), RAM: 1GB.
While playing 720p video, the system should not be doing other CPU/memory/storage consuming jobs.

Important Information

Before you get started, please NOTE:

Do not place Wireless USB devices under direct sunlight or near high heat emitting devices;

Do not place Wireless USB devices near water or wet surfaces to avoid electric hazards;

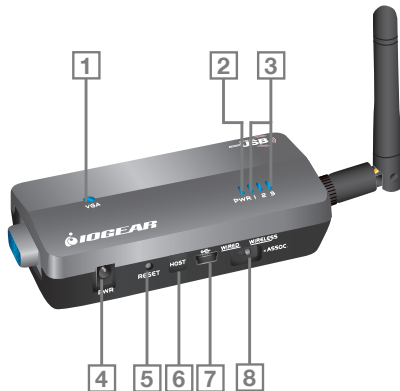
Do not place Wireless USB devices on any moving or unstable surfaces.

Package Contents

- 1 x Wireless USB to VGA Adapter (for Monitor/TV/Projector)
- 1 x USB 2.0 A to mini-B Cable (3 ft.)
- 1 x Velcro fabric hook-and-loop fastener
- 1 x Power Adapter (full range)
- 1 x Quick Start Guide
- 1 x Registration / Warranty Card
- 1 x Installation CD (with User Manual)

Device Overview

Wireless VGA Adapter



Wireless VGA Adapter

1. VGA : VGA Activity Indicator

- a. LED is solid when display cable is connected
- b. LED is blinking when data is being transferred

2. PWR: Power Indicator

- a. LED is solid when power is applied

3. 1 – 2 – 3: Status Indicator

- a. Single* solid light: device is wirelessly connected to the selected Wireless USB Host Adapter
- b. Single* slowly blinking light: device is searching for a Wireless USB Host Adapter
- c. Single* quickly blinking light: device is trying to connect to a Wireless USB Host Adapter
- d. Rapidly scrolling lights: device is used in wired mode
- e. Three Simultaneous Blinking Lights: Cable Association Mode

* Only one light at a time. The position of the light indicates which Wireless USB Host Adapter the device is trying to communicate with.

4. PWR plug

- a. Power adapter socket

5. RESET

- a. Association history can be erased by pressing and holding this button for 10 seconds

6. HOST

- a. This button is used to select a different Wireless USB Host Adapter

7. USB connector

- a. In wireless mode, this connector is used for cable association
- b. In wired mode, this connector is used for wired operation

8. WIRED/WIRELESS switch

- a. Choose from wired or wireless mode by using this switch

Wireless USB VGA Software Installation

Please always check www.iogear.com for latest drivers.

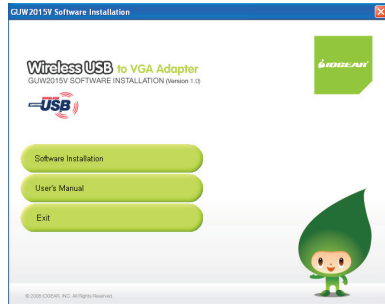
IMPORTANT NOTE:

If installing on Windows XP, Service Pack 2 (SP2) is required, verify that this has been installed on your PC before installing the Wireless USB VGA Adapter software.

Before installing the G UW2015V software, please make sure that the Wireless USB VGA Adapter is not connected to the computer, and the Wireless USB VGA Adapter is not powered.

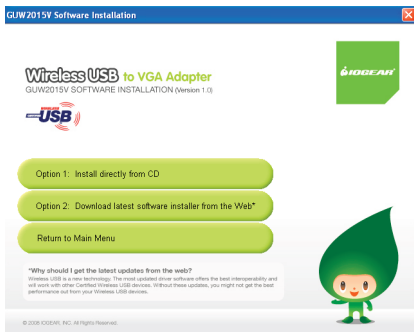
Step 1 – Insert installation CD into drive on your computer.


Step 2 - Select “Software Installation” from the menu.



Step 3 – Choose installation method.

The next screen will let you choose whether you want to install the latest software from the IOGEAR website or if you want to install the software directly from the installation CD.





If selecting **Option 2: Download latest software installer from the Web**, a web browser window will launch directing you to the LOGEAR website where you'll find the most up-to-date software. Once you download the software, double-click on the .exe file to begin the installation process.

If selecting **Option 1: Install directly from CD**, the installation will start automatically.

Important: After the wizard has finished installing the software, reboot your computer if prompted to do so.

Cable Association with the Wireless USB Enabled PC

In order to establish a secure wireless connection between the Wireless USB enabled PC and the Wireless USB VGA Adapter, you will need to go through the cable association process. If you have a removable Wireless USB host adapter, please make sure it is plugged in now.

To start, plug the power cable into the Wireless USB VGA adapter.



12

Then use the included USB 2.0 A to mini-B cable to connect the Wireless USB VGA Adapter to your PC.



Windows will detect that a new device has been connected. This will automatically install the necessary drivers and start the Wireless USB Association process.

Once the association process has been successfully completed, you will see the wireless connection status showing Association Successful. (Wording may vary depending on which software comes with your Wireless USB Host adapter). Click OK to close the window.

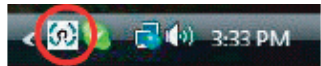
After completing the association process, unplug the USB 2.0 A to mini B cable from the Wireless USB VGA Adapter.

Windows will automatically install the Wireless USB VGA Adapter drivers.

To verify that the connection has been successfully established, double click on your host adapter manager utility icon* located in the Windows system tray.

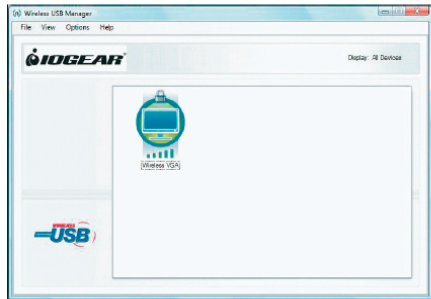
* Please note, your host adapter manager utility icon may vary depending on which host you are running with the Wireless USB VGA adapter. For example, your host adapter manager utility could be Wireless USB Manager, UWB Manager, WiCenter or a number of other Wireless USB hosts.

Illustration on the right is an example for your reference



The host adapter manager utility will display the Wireless USB VGA icon which shows the status link (signal strength) when connected. If the Wireless USB VGA adapter is not connected, then the Wireless USB VGA icon will be grayed out.

Illustration on the right is for your reference. Please note, your host adapter manager utility may vary depending on which host you are running with the Wireless USB VGA adapter.



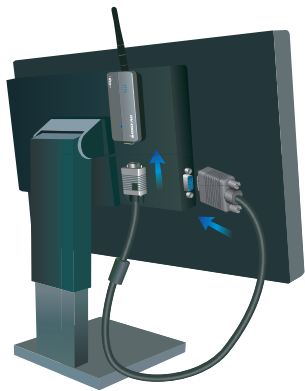
Congratulations, your Wireless USB to VGA Adapter is ready for use.

Connecting Wireless USB VGA Adapter

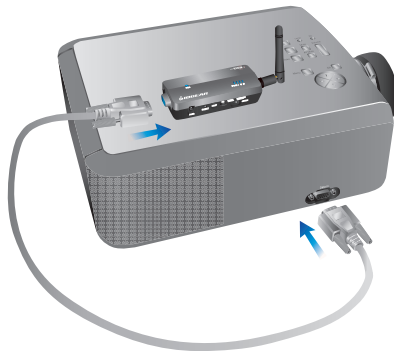
Please make sure the PC is Wireless USB enabled either with embedded Wireless USB solution or with the Wireless USB Host Adapter plugged in before you connecting the Wireless USB VGA Adapter.

Verify that the antenna on the Wireless USB VGA adapter is securely attached and pointed in a vertical position.


Connect one end of the VGA cable (not included) to the Wireless USB VGA Adapter, and the other end to your display's blue VGA port.



For LCD Monitor/ Flat-Panel TV



For Projector

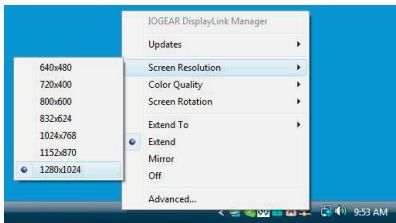


You may use the included Velcro® fabric hook-and-loop fastener to attach the Wireless USB VGA adapter to your projector or LCD display in order to ensure a good line-of-sight signal with the Wireless USB Host adapter.

Change your display's setting to select VGA as your input device. Please refer to the operating instructions supplied with your display.

Wireless USB VGA Display Settings

By default, the display monitor connected to the Wireless USB VGA adapter will be set to the best resolution and will extend your screen to the right. You may change the screen mode and the operation mode by double clicking on the Monitor icon in the Windows system tray.



A menu will appear and you will have the ability to change parameters such as resolution, color quality, mirror mode or extension mode and more.

You may also modify your display settings by going into control panel and double click on the **Display** icon for Windows XP or **Personalization** icon for Vista.

Video Mode Configuration

By default, your installation will be set with the best resolution for your computer and will extend your screen to the right. You may change the screen mode and the operation mode.

Note: If no output is seen on the monitor connected to the Wireless USB VGA Adapter, it may be in a mode which cannot be displayed by the monitor. This can happen if the monitor does not have its supported modes to the Wireless USB VGA Adapter. Reduce the resolution of the primary display until an image is shown.

There are two options to adjust the Resolution, Color Quality, Screen Rotation, and Extended or Mirror Mode. One is to click on the IOGEAR DisplayLink Manager icon in the Windows tray

as shown above, another is to go to Control Panel, double click on "Display", then choose "Settings" tab.

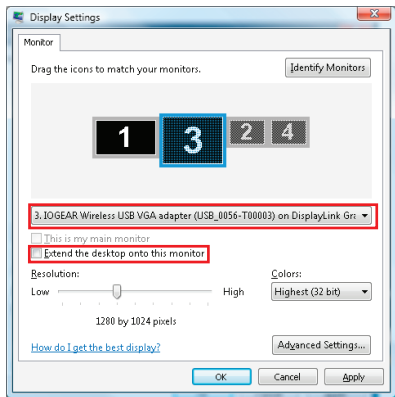
Mirror Mode

Mirror mode duplicates the primary display to the monitor connected to the Wireless USB VGA Adapter.

The resolution, color depth and refresh rate of the primary screen will be replicated to the monitor connected to the Wireless USB VGA Adapter. If the monitor connected to the Wireless USB VGA Adapter supports a lower resolution than the primary display, then a part of the screen is shown on the mirrored display. As the mouse is moved around the screen, the Wireless USB VGA Adapter display will scroll to the current area.

To set up the Wireless USB VGA Adapter to mirror the primary display:

1. Go to the “Settings” tab of the Display Properties page
2. Click on the Monitor connected to the “IOGEAR Wireless USB VGA adapter”
3. Ensure that “Extend my Windows desktop onto this monitor” is Unchecked
4. Click “Apply”



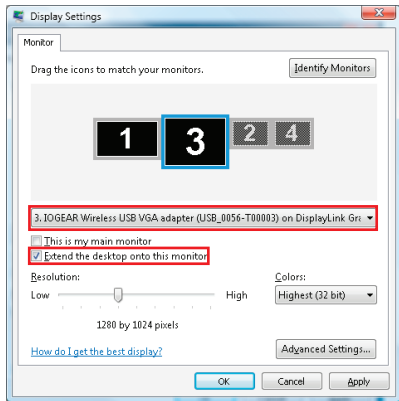
Extended Mode

Extended mode extends the desktop across multiple monitors.

To set up extended mode:

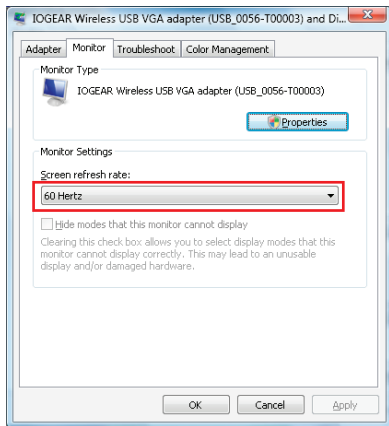
1. Go to the “Settings” tab of the Display Properties page
2. Click on the Monitor connected to the “IOGEAR Wireless USB VGA adapter”
3. Ensure that “Extend my Windows desktop onto this monitor” is checked
4. Click “Apply”

The orientation of the screens can also be adjusted by dragging the location of the blue screens to match the actual physical layout.



Screen Refresh Rate Configuration

To adjust the refresh rate of the extended screen, click on “Advanced” and then the “Monitor” tab.



Wireless USB VGA Adapter in Wired Mode

Your Wireless USB VGA Adapter can also be used in wired mode. Make sure the position of the WIRED/ WIRELESS switch is in the WIRED position. Plug the USB cable between your computer and the Wireless USB VGA Adapter. The function is the same as the wireless mode but data will be transferred through the cable and does not require the use of the Wireless USB Host Adapter.



Frequently Asked Questions

For the latest FAQs, please go to IOGEAR website (www.iogear.com).

1. My Wireless USB Host Adapter is plugged into my computer and my Wireless USB VGA Adapter is powered but I do not see anything on my display. What's wrong?

Check the host adapter manager utility provided by your Wireless USB Host Adapter (PC side) to see if there is an icon for your Wireless USB VGA Adapter. If there is no icon, try unplugging and plugging in your Wireless USB Host Adapter to reload the Wireless USB VGA Adapter.

Still not connected?

Double check that the radio from your Wireless USB host adapter is on.

2. Why is my video choppy?

If you are experiencing choppy video, try changing the channel in the host adapter manager utility provided by your Wireless USB Host Adapter or move in your computer closer to the display.

Technical Specifications

Specifications

| Function | G UW2015V |
|--------------------------|--|
| Operating System Support | Microsoft XP 32-bit; Microsoft Vista 32/64-bit |
| PHY Data Rate | 53.3Mbps, 80Mbps, 106.6Mbps, 160Mbps, 200Mbps, 320Mbps, 400Mbps, 480Mbps |
| Operating Range | Up to 30 feet (10 meters) |
| Frequency | 3.1GHz to 4.8GHz (WiMedia Band Group 1) |
| Number of Channels | 7 channels (3 FFI + 4 TFI) |
| RF Modulation Type | QPSK/DCM |
| Interface | VGA |
| Video Resolution | Up to UXGA (1600x1200) or WSXGA+ (1680x1050) |
| Video Streaming | Up to 720p (720p only available at resolution 1280x720 or lower) |

| | |
|-------------------|---|
| Screen Mode | Extended and Mirror mode |
| Color Depth | 32-bit True Color |
| USB Specification | Certified Wireless USB 1.0; USB 2.0 |
| Association Mode | Cable Association; Stores up to 16 Associated Hosts |
| Native Mode | For playback of high resolution video |
| Antenna Type | Omni directional |
| Reset Switch | Used for erasing association history by pressing and holding this button for 10 seconds |
| Power Consumption | Wireless VGA Adapter: 3.3W |
| Max Output Power | -41.3 dBm/MHz |
| Power Adapter | 5V, 2A; 100-240VAC |

Limited Warranty

IN NO EVENT SHALL THE DIRECT VENDOR'S LIABILITY FOR DIRECT, INDIRECT, SPECIAL, INCIDENTAL OR CONSEQUENTIAL DAMAGES RESULTING FROM THE USE OF THE PRODUCT, DISK, OR ITS DOCUMENTATION EXCEED THE PRICE PAID FOR THE PRODUCT.

The direct vendor makes no warranty or representation, expressed, implied, or statutory with respect to the contents or use of this documentation, and especially disclaims its quality, performance, merchantability, or fitness for any particular purpose.

The direct vendor also reserves the right to revise or update the device or documentation without obligation to notify any individual or entity of such revisions, or updates. For further inquiries please contact IOGEAR.

Federal Communications Commission (FCC) Statement

This device complies with part 15 of the FCC Rules. Operation is subject to the following two conditions: (1) this device may not cause harmful interference, and (2) this device must accept any interference received, including interference that may cause undesired operation. This device is authorized under 47 CFR 15.519 (the FCC Rules and Regulations). The operation of this device is subject to the following restriction: This UWB device shall transmit only when it is sending information to an associated receiver. This UWB device shall cease transmission within 10 seconds unless it receives an acknowledgement from the associated receiver that its transmission is being received. An acknowledgement of reception must continue to be received by the transmitting device at least every 10 seconds of operation or the UWB device must cease transmitting.

Contact

IOGEAR

23 Hubble

Irvine, CA 92618

P 949.453.8782

F 949.453.8785

Visit us at: www.iogear.com

© 2008 IOGEAR® Part No. M1063

IOGEAR, the IOGEAR logo, are trademarks or registered trademarks of IOGEAR, Inc. Microsoft and Windows are registered trademarks of Microsoft Corporation. All other brand and product names are trademarks or registered trademarks of their respective holders. IOGEAR makes no warranty of any kind with regards to the information presented in this document. All information furnished here is for informational purposes only and is subject to change without notice. IOGEAR, Inc. assumes no responsibility for any inaccuracies or errors that may appear in this document.





About Us



FUN

IOGEAR offers connectivity solutions that are innovative, fun, and stylish, helping people enjoy daily life using our high technology products.



GREEN

IOGEAR is an environmentally conscious company that emphasizes the importance of conserving natural resources. The use of our technology solutions helps reduce electronic waste.



HEALTH

IOGEAR supports healthy and fit lifestyles. By integrating products with the latest scientific developments, IOGEAR's solutions enhance the life of end-users.

© 2008 IOGEAR®

Free Manuals Download Website

<http://myh66.com>

<http://usermanuals.us>

<http://www.somanuals.com>

<http://www.4manuals.cc>

<http://www.manual-lib.com>

<http://www.404manual.com>

<http://www.luxmanual.com>

<http://aubethermostatmanual.com>

Golf course search by state

<http://golfingnear.com>

Email search by domain

<http://emailbydomain.com>

Auto manuals search

<http://auto.somanuals.com>

TV manuals search

<http://tv.somanuals.com>