

**iriver**

**iFP-900 Series**

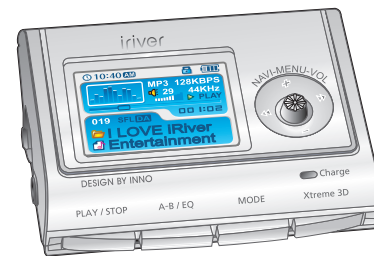
<http://www.iriver.com>



**iriver**

# Instruction Manual

## MP3 PLAYER / FM TUNER Model iFP-900 Series



**Firmware Upgradable**

Thank you for your purchase.  
Please read this manual carefully  
before using your new player.

<http://www.iriver.com>

## Welcome to iriver Website

Thank you for your iriver purchase.  
The iFP-900 comes complete with a long list of advanced features.  
It is important that you read the manual to ensure that you get the most out of your new player.

<http://www.iriver.com>

- URL : [www.iriver.com](http://www.iriver.com)
- Find information on our company, products, and customer and technical support.
- Update your player with firmware downloads. Firmware upgrades offer support for new CODECS and deliver new product features.
- Consult the product FAQ.
- Register your iriver product online so that our Customer Service is able to provide support as efficiently as possible.
- All contents contained in this manual subject to change without notice to improve ability of this player or according to changing of specification.

## Certification

- CE, FCC, MIC

<http://www.iriver.com>

- iriver Limited has all the rights of the patent, trademark, literary property and intellectual property related to this manual. You may not reproduce any part of this manual unless authorized by iriver Limited. You can be punished by using any part of this manual illegally.
- The software, audio and video which have an intellectual property are protected by copyright and international laws. It is user s responsibilities when he/she reproduce or distribute the contents created by this product.
- The companies, institutions, products, people and events used in examples are not real data. We don t have any intension to be related with any companies, institutions, products, people and events through this manual and should not draw inferences. Users are responsible for observing the copyrights and intellectual properties.

©1999~2004 iriver Limited, All right reserved

### Trademarks

- Windows, Windows 98 SE, Windows ME, Windows 2000, Windows XP and Windows Media Player are the registered trademarks of Microsoft Corp.

### Limited Liability

- Neither the Manufacturer, importers nor dealers is responsible for any accidental damage including bodily injury or any damage resulting from misuse or unsuitable operation by you.
- The information on this manual is prepared with the current product specifications. The manufacturer, iriver Limited, is adding new features to the product and may persistently apply new technologies hereafter.  
All standards may be changed at any time without notice.

Getting started	1
Locating the controls	2
PC software installation	3
Basic operation	4
Convenient Functions	5
Additional information	6

This manual covers the installation and use of the player hardware.  
For details regarding the software operation including transferring music to the player, please see the Software Instruction Manual.



## Handling Notices for Safety

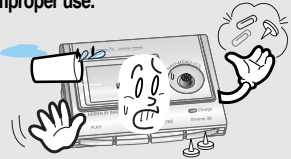
Keep out of direct sunlight.

- Damage to your player may result from improper use.



Do not place objects inside the device.

- Damage to your player may result from improper use.



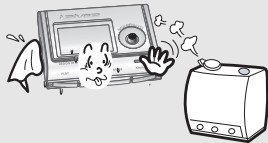
Do not disassemble or modify.

- Damage to your player may result from improper use.



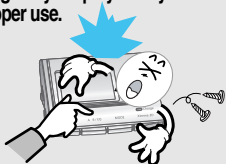
Keep out of extreme heat and cold.

- Damage to your player may result from improper use.



Do not use excessive force on the buttons or attempt to disassemble the device.

- Damage to your player may result from improper use.



Do not use water or chemicals to clean the player. Clean the surface with a soft cloth.

- Damage to your player may result from improper use.



Keep the player away from strong magnets or excessive vibration or dropping any material.

- Damage to your player may result from improper use.



Avoid contacting the player with water or chemicals.

- Damage to the internal parts of the player may occur. If your player gets wet, dry the outside with a soft cloth as soon as possible.



## Handling Notices for Safety

Keep away from harsh environments including humid, dusty, and smoky areas.

- Damage to your player may result from improper use.



Avoid running with the player around your neck.

- Damage to your player may result or injury from improper use.



Avoid **impacting** the player against other objects when it is in your pocket or backpack.

- Damage to your player may result or injury from improper use.



Keep headphones / earphones cords under control at all times.

- Cords may get caught on a variety of objects and cause damage or injury.



## Features of iFP-900

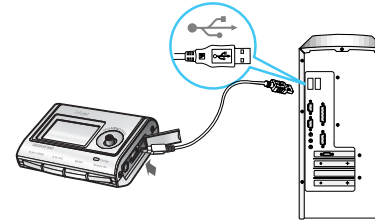
- Multi-Codec Player : Supports MP3, WMA, OGG and ASF formats.
- Firmware Upgrade  
Provides the latest updated features via firmware upgrade.
- 260,000 color graphic LTPS LCD supporting Multiple Languages(40 languages)  
iFP-900 Series comes with 260,000 color graphic LTPS (Low Temperature Poly Silicon) LCD which can support multiple languages.
- FM Function  
You can easily listen to FM stations and set your favorite stations by using Auto Preset and Frequency Memory functions.
- 6 Preset EQ : Normal, Rock, Jazz, Classic, U Bass, Metal
- Xtreme EQ and Xtreme 3D  
Customize your own EQ with Xtreme EQ and enhance bass and surround sound with Xtreme 3D.
- GUI (Graphic User Interface) Menu System
- Easy Navigation  
The simple navigation makes it easy to find any song.
- Supports 8 levels of subfolders, 500 folders total and up to 1500 files at one time.
- Create your own playlists.
- Direct Encoding  
11.025KHz ~44.1KHz, 8Kbps ~ 320Kbps
- Record FM Radio, Voice, or Line-In from another device  
Voice record level is automatically controlled by AGC function.
- Convenient neck strap.
- Built-in Rechargeable battery that charges directly from the USB port as well as AC Adapter.
- Supports USB 2.0 (Maximum transfer speed up to 3x faster than USB 1.1)

## About Power Supply

### Charging from the PC

Connect the player to the PC with USB cable.

The player will charge automatically when the player is connected to the PC.



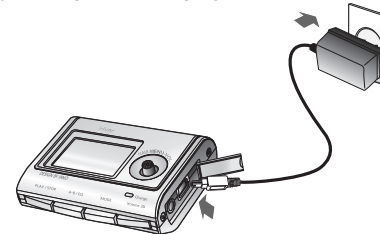
#### Note

- Player will charge even when powered off.
- Charging indicator light will turn off when charging is complete.

### Charging with AC Adapter

Use only the AC Power Adapter supplied with the player for safety.

Connect the AC adapter to the USB port on the player first and then into AC outlet. (AC adapter of this player is for 120V, 60Hz.)



#### Note

- Charging time  
Approx. 3.5 hours  
(At full discharge, Stop mode)

## About Power Supply

### Managing the Rechargeable Battery

#### Note

- Charge and store the battery at room temperature. It may not charge properly in hot or cold temperature environments.
- Do not attempt to disassemble the battery. Do not expose the battery to open flame. These activities may cause the battery to explode resulting in serious injury.
- Do not contact the connectors of the battery to metal objects, or an electrical short may occur.
- Before storing the player for extended periods of time, fully charge the battery. After storage, fully charge the battery before use.
- Keep the player and battery away from children and animals. Biting the player or battery may cause exposure, electric shock or exposure to electrical fields.

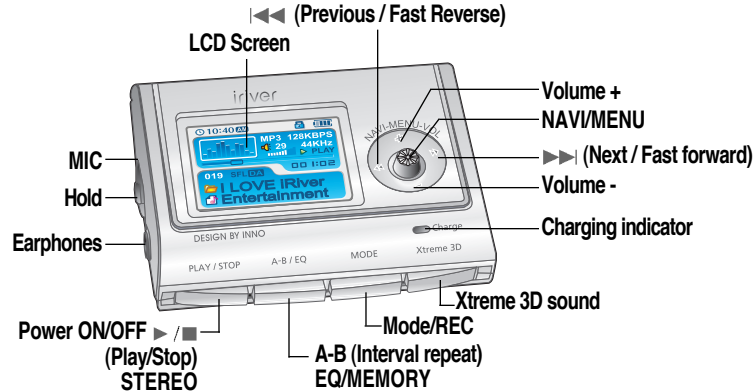
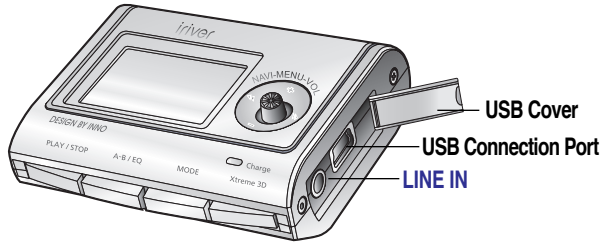
## Locating the controls

### Contents

Front View	2-1
Rear View / Side View	2-2
LCD screen	2-3

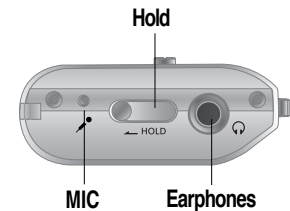
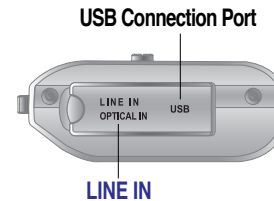
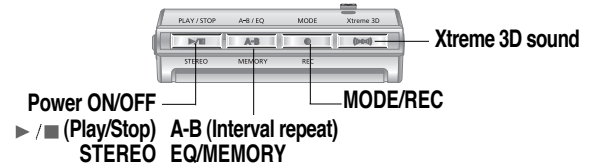
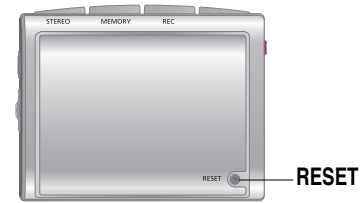
## Locating the controls

### Front View



## Locating the controls

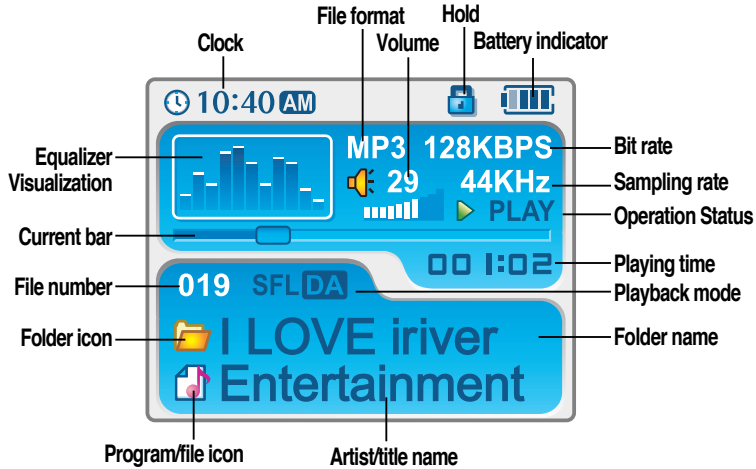
### Rear View / Side View





## Locating the controls

### LCD Screen



**Note** • File type displayed as follows :

ASF : ASF	OGG : OGG
IRM : IRM	WMA : WMA
MP3 : MP3	

• IRM (iriver Rights Management) : iriver Rights Management is a digital music format. Please visit our web site for details about this music format.

## PC software installation

### Contents

This section covers the installation for Windows operating systems only. For installation instructions for Mac OS, please see the Software Instruction Guide.

PC software installation ..... 3-1

Attach the player ..... 3-4

**Note** First, install iriver Music Manager program BEFORE ATTACHING YOUR PLAYER TO YOUR PC.

## PC software installation

### Software installation

- Insert the Installation CD into the CD-ROM drive.  
The following screen appears after inserting the CD.



- If the installation doesn't automatically begin, execute the "setup.exe" file in the installation CD. The installation program will begin.
- The installation CD contains the following contents :
  - Device Driver
  - iriver Music Manager
  - Manager Program for Mac

- The player can store MP3 files or files of any type. You can upload files, other than music (MP3, WMA, OGG, ASF), to the PC using the iriver Music Manager Program.
- Download latest versions of drivers and iriver Music Manager at [www.iriver.com](http://www.iriver.com)
- Please be sure your login has Administrator privileges if using Windows 2000 or Windows XP.

#### Note System Requirements (Windows)

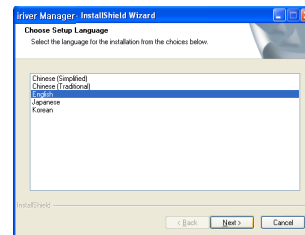
- Pentium 133MHz or faster
- USB port
- Window 98SE / ME / 2000 / XP
- CD-ROM drive
- 10MB free hard disk space

## PC software installation

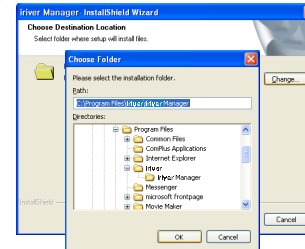
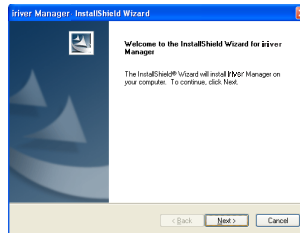
### Software installation

Please note that the installation screens may differ slightly from those appearing here, as software may be of a more recent version. If your screens differ, please visit [www.iriveramerica.com/software/](http://www.iriveramerica.com/software/) for an updated user guide

- 1 Insert the Installation CD into the CD-ROM drive. Installation start automatically.
- 2 Click "Next" after selecting the language to install.



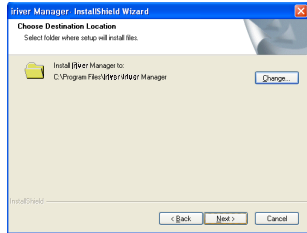
- 3 Click "Next" to Install iriver Music Manager.
- 4 Select the folder to install. Click "OK".



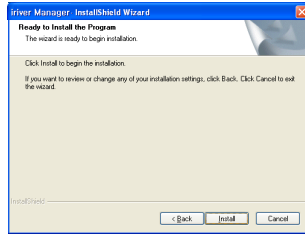
# PC software installation

## Software installation

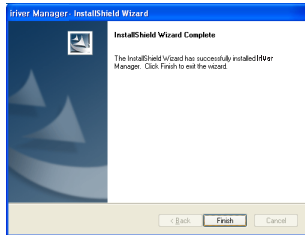
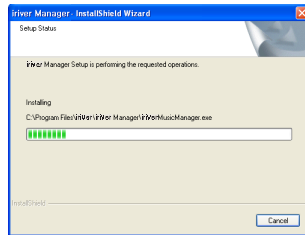
- 5 Click "Next" after confirming the installation folder.



- 6 Click "Install" to begin the installation.



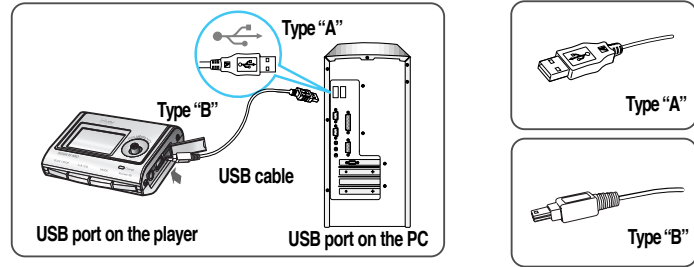
- 7 Installation is in progressing. Click "Finish" after the installation is completed.



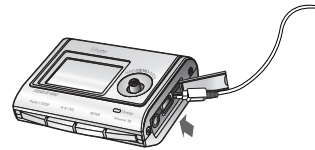
# Attach the player

## Connecting to the PC

- 1 Connect the USB cable (provided) to the USB port of your computer.



- 2 Lift the protective cover over the USB port and connect the USB cable to the player.
- 3 "USB CONNECTED" will appear on the LCD screen of the player.

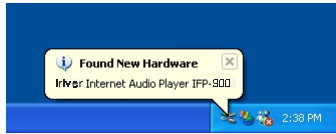


**Note** • Connect the USB cable to the PC after playback stops to avoid errors.

## Attach the player

### Installation of "New Hardware"

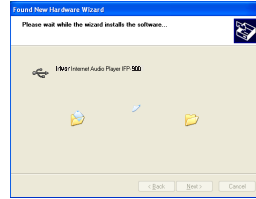
- 1 After installing iriver Music Manager from the CD and connecting the player to your PC, "Found New Hardware" screen is displayed. (Windows XP)



- 3 Select "Install the software automatically (Recommended)" and click "Next".



- 2 The computer will automatically search to find your new hardware.



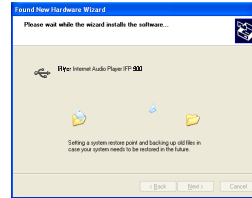
- 4 If a "Hardware Installation" warning message appears, click "Continue Anyway". (Windows XP)  
The iriver software driver will not cause any damage to your computer.



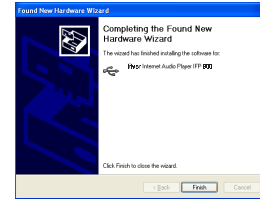
## Attach the player

### Installation of "New Hardware"

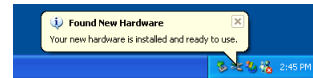
- 5 The installation will continue.



- 6 Click "Finish" Completed the installation of "New hardware".



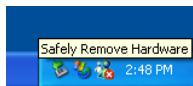
- 7 Information screen is displayed on the PC. New hardware is installed successfully and ready to use.



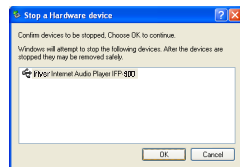
## Attach the player

### Safely Removing the player from the PC

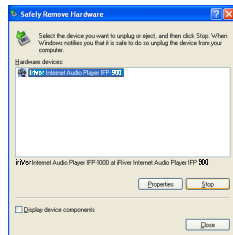
- 1 Select the “Safely Remove hardware” after clicking the “Safe To Remove Hardware” by using the right button of mouse.



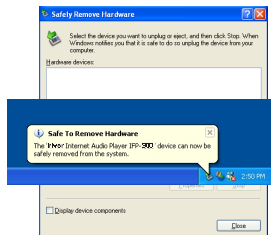
- 3 Click the “OK” after confirming the hardware to remove.



- 2 Click the “Stop” after selecting the device to remove.



- 4 Click the “Close” after confirming the Safely Remove Hardware message. (In case of Windows XP)



**Note** • Remove the player from the PC after safe remove to avoid errors.

## Basic operation

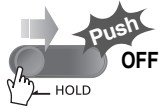
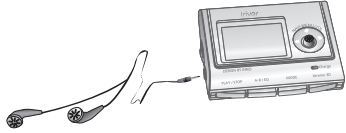
### Contents

Basic Operation	4-1
Listening to Music	4-7
Listening to the FM radio	4-8
Recording	4-13
Text Viewer	4-21
My Image	4-24

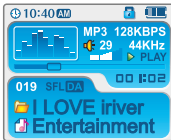
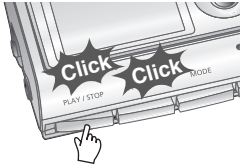
## Basic operation

### Turning on the player

- Connect the earphones as shown below.
- Put the HOLD switch to "OFF".

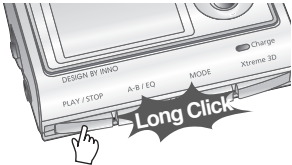


- Press the PLAY/STOP button to turn on the player. The "My Image" appears on the LCD.
- Press PLAY/STOP again to play.



### Turning off the player

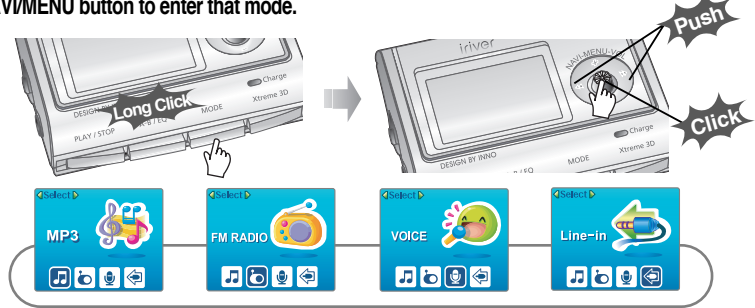
Press and hold the PLAY/STOP button to turn the player off.



## Basic operation

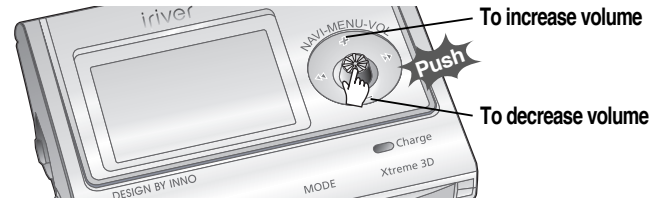
### Changing functions

Press and hold MODE button to display current function on the LCD screen. Push the NAVI/MENU button toward ◀◀ or ▶▶ to select the desired function, then press the NAVI/MENU button to enter that mode.



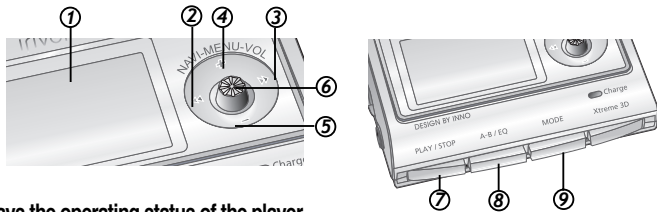
### Adjusting the volume

Push the NAVI/MENU button to the VOL + direction to increase volume. Push the NAVI/MENU button to the VOL - direction to decrease volume.



## Basic operation

### Listening to music

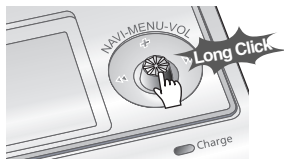


1. Displays the operating status of the player.
2. To skip to previous file, folder, FM station or value.
3. To skip forward to the next file, folder, FM station or value.
4. To increase volume.
5. To decrease volume.
6. To select NAVI/MENU function.
7. To turn on/off, to play or stop playback or to select FM mode
8. To select EQ mode, A-B repeat, or automatically store FM stations.  
EQ : NORMAL → ROCK → JAZZ → CLASSIC → U BASS → METAL → Xtreme EQ → Xtreme 3D
9. To select function, playback mode, record/stop recording.

### Navigation



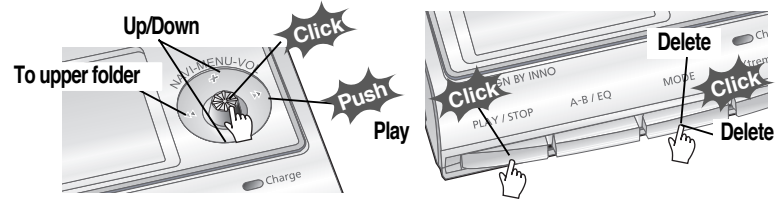
### Menu



## Basic operation

### Navigation

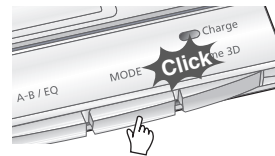
Press the NAVI/MENU button and find the desired music file by pushing the NAVI/MENU button to VOL + or VOL - direction. To play the files, press the NAVI/MENU button, push the NAVI/MENU button to the ►► direction or the PLAY/STOP button. To move to the upper folder, the NAVI/MENU button to the ◀◀ direction. If there is no upper folder, NAVIGATION stops.



- Select the folder to delete in stop mode. Then press the “MODE” button. “FILE(or FOLDER) DELETE ARE YOU SURE?” is displayed on the screen. Select “YES” by using ◀◀ or ►► (VOL + or VOL -) to delete. Then press the NAVI/MENU button.

### Changing the playback mode

While an audio file is playing or the player is in stop mode, press MODE/REC to activate selected modes, such as Repeat or Shuffle.



Repeat :

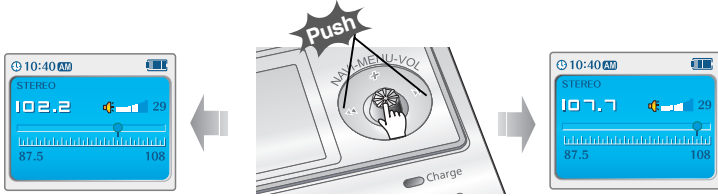
Shuffle : SFL SFL SFL SFL

Intro :

## Basic operation

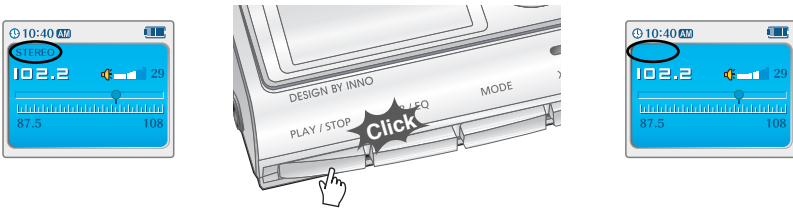
### Tuning FM stations

Push the NAV/MENU button to the ◀◀ or ▶▶ direction to select desired station.



### Selecting the FM stereo/mono

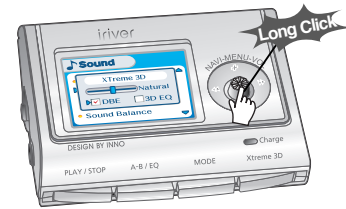
Press the STEREO/PLAY/STOP button to select Stereo/Mono.



## Basic operation

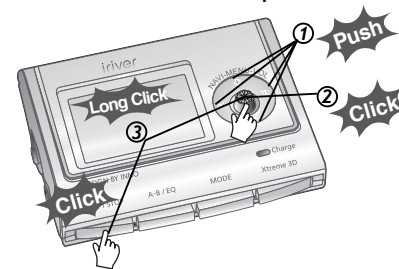
### Settings

To enter the Settings menu, press and hold the NAV/MENU button. Once in the menu, various player settings can be customized.



### Settings Menu navigation

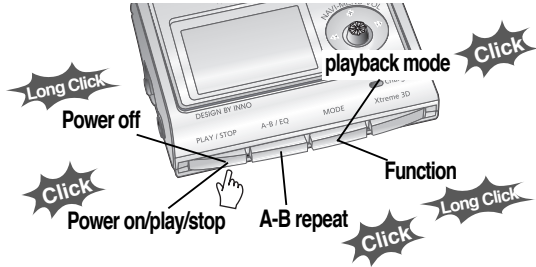
1. Scroll between Menus : Push the NAV/MENU button toward ◀◀ or ▶▶ direction.
2. Function Selection : Press the NAV/MENU button.
3. Exit : Press and hold the NAV/MENU button or press the PLAY/STOP button.



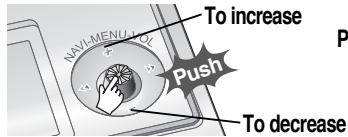


# Listening to music

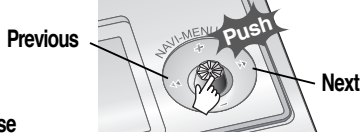
## Playing music file



## Adjusting the volume



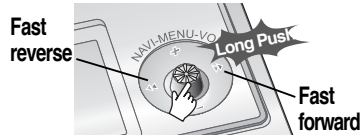
## To select music file



## To play the folder



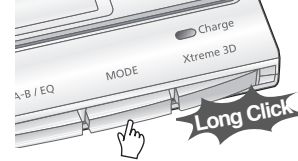
## To fast forward/reverse



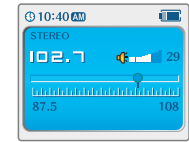
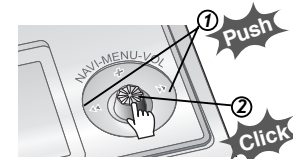
# Listening to the FM radio

## FM radio listening

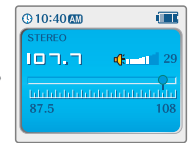
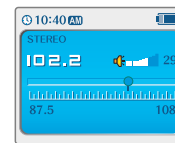
- 1 Press and hold the MODE/REC button. The current function appears on the LCD screen.



- 2 Push the NAVI/MENU button to the ◀◀ or ▶▶ direction to select FM radio. Press the NAVI/MENU button to confirm.



- 3 Push the NAVI/MENU button to the ◀◀ or ▶▶ direction to select FM station.

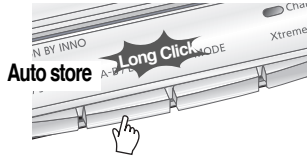
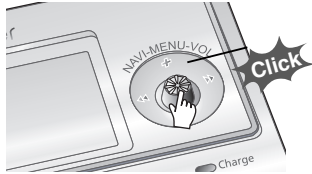


## Listening to the FM radio

### Programming station preset automatically

Automatically select stations and save them in sequential order.  
(It only activates while the player is not in PRESET mode)

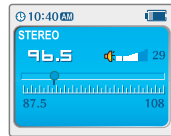
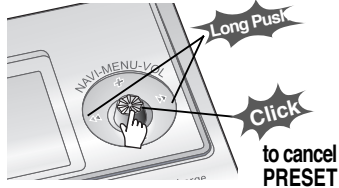
- 1 If PRESET is displayed on the screen, press the NAV/MENU button to exit PRESET mode.
- 2 Press and hold the A-B/EQ(MEMORY) button to automatically select stations and save them in sequential order. Up to 20 stations will be stored automatically.



**Note** • Auto memory may not work in weak transmission areas.

### Programming station preset manually

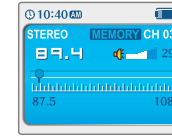
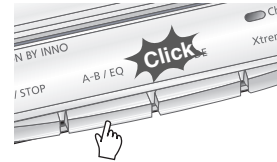
- 1 If PRESET is displayed on the screen, press the NAV/MENU button to exit PRESET mode.
- 2 Push or long push the NAV/MENU to the <<< or >>> direction to select FM station.



## Listening to the FM radio

### Programming station preset manually

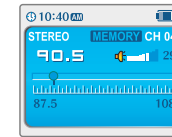
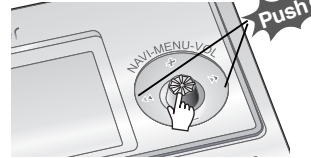
- 3 Press the A-B/EQ(MEMORY) button to begin storing the station. MEMORY and the channel number will display on the screen.



MEMORY CH 03

Reserved number of the preset stations.

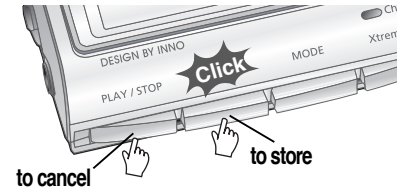
- 4 Push the NAV/MENU button to <<< or >>> direction to select a different channel number if desired.



MEMORY CH 04

To select number of the preset stations.

- 5 Press the A-B/EQ(MEMORY) button to store the station in the selected channel number. Press the PLAY/STOP button to cancel station storing.

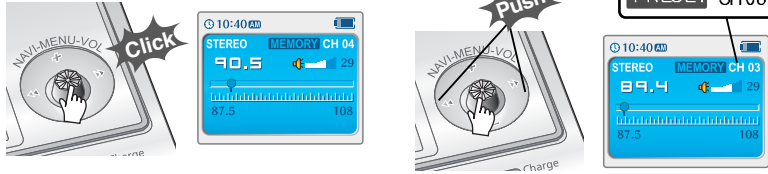


• Up to 20 station can be stored.

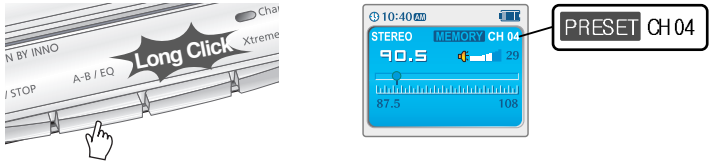
## Listening to the FM radio

### Deleting preset station

- 1 If PRESET is not displayed on the screen, press the NAV/MENU button to enter PRESET mode.
- 2 Push the NAV/MENU button to ◀◀ or ▶▶ direction to select the station to be deleted.



- 3 Press and hold the A-B/EQ(MEMORY) button to delete the selected station.



- The next station will appear when station delete is completed.
- Push and hold the memory button again if you also want to delete the next station.

**Note**

- FM Tuner reception may vary in different areas.
- While in PRESET mode, auto scan and auto memory functions are not available.
- When the player doesn't have any preset stations, EMPTY will briefly display on the screen.

## Listening to the FM radio

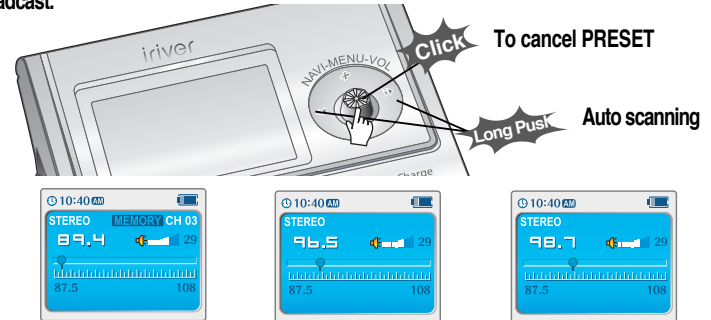
### To select stereo/mono

- Use Mono mode to increase reception in weak transmission areas. Press the PLAY/STOP(STEREO) button to select Stereo/Mono.



### Tuning stations automatically

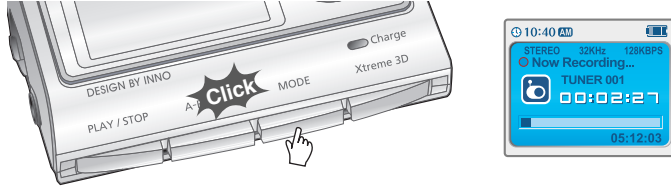
- If PRESET is displayed on the screen, press the NAV/MENU button to exit PRESET mode. Push and hold the NAV/MENU button to ◀◀ or ▶▶ direction. The player will scan each frequency quickly and stop at the next station with a strong signal broadcast.



## Recording from FM stations

### Recording from FM stations

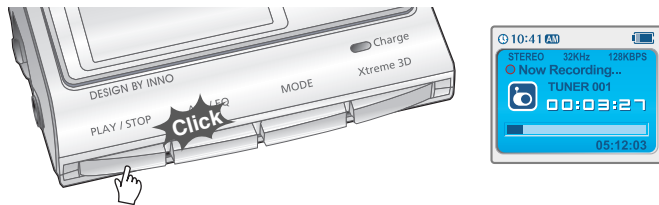
Press the MODE/REC button during FM reception to begin recording.  
The remaining available recording time will be displayed.



- Note**
- Volume can not be controlled while recording.
  - Recorded REC files can be converted to MP3 files using iriver Manager.  
(Refer to iriver Music Manager Instruction Manual)

### To pause FM recording

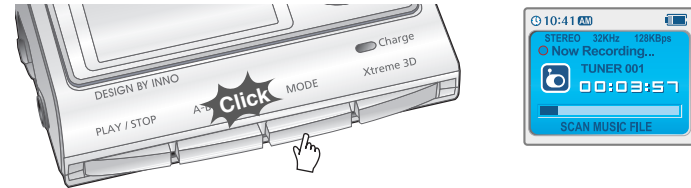
- Press the PLAY/STOP button to pause the recording process.
- Press the PLAY/STOP button again to restart recording.



## Recording from FM stations

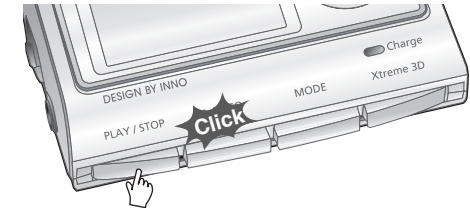
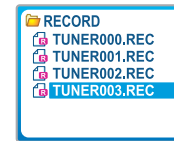
### To stop FM recording

- Press the MODE/REC button to stop recording.
- The recorded file is saved as TUNER000.REC.
  - It is saved in the RECORD folder.



### To play a recorded file

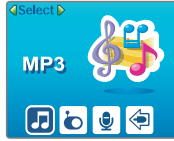
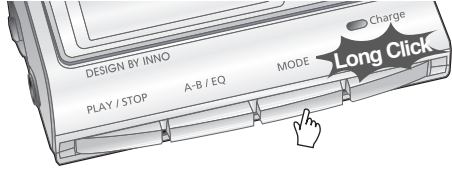
After changing to MP3 mode, select a Tuner file in the RECORD folder, press the PLAY/STOP button.



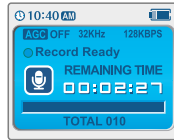
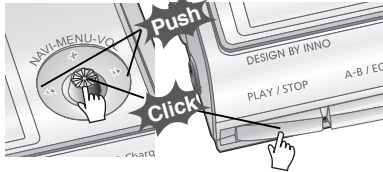
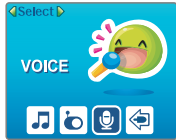
# Recording voice

## Recording voice

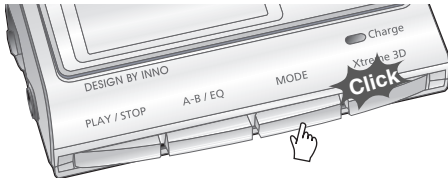
1 Press and hold the MODE/REC button. The current function appears on the LCD screen.



2 Press the NAVI/MENU button to the ◀◀ or ▶▶ direction to select Voice mode. Press the NAVI/MENU button (or PLAY/STOP) to enter Voice recording mode. (The recorder will be in standby mode.)



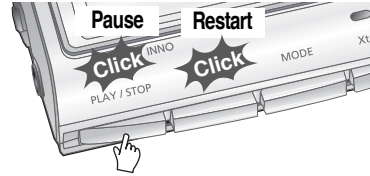
3 Press the MODE/REC button and to begin recording.



# Recording voice

## To pause recording voice

Press the PLAY/STOP button to pause the recording process. Press the PLAY/STOP button again to restart recording.



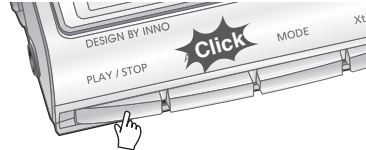
## To stop recording voice

Press the MODE/REC button to stop recording. Note: After stopping a recording, starting again will create a new voice file.



## To play a recorded file

Press the MODE/REC button to stop the current recording. Press PLAY/STOP to play the recorded file.



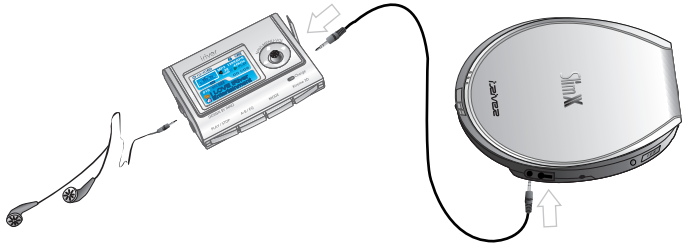
### Note

- The recorded file is saved as VOICE000.REC in the VOICE folder.
- If "00:00:00" is displayed on the LCD, the player's memory is full. To record, delete files and/or folders on the player to make some space available. (Refer to page 5-3, Software Instruction Manual)
- Keep the player far away enough from the source to avoid distortion in the recording.
- The player can not record when the memory is full or the battery is low.
- Recorded REC files can be converted to MP3 files using iriver Manager. (Refer to Software Instruction Manual)

## Recording from an external audio source

### Preparing Recording from an external audio source

- 1 Connect the LINE OUT jack of the external equipment to the LINE IN jack of the player.



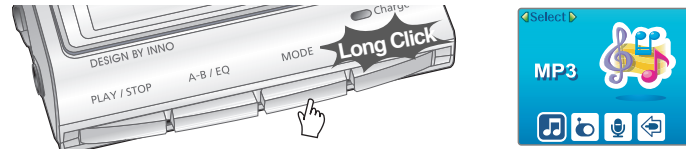
**Note** • To record from an external microphone, change the "Record Type" in the Settings menu. (Refer to page 5-24/5-25)

- 2 Push and hold the NAV/MENU button to enter to Setup Menu. Select "Control" by pushing the NAV/MENU button toward ◀◀ or ▶▶ direction.
- 3 Adjust Line-in Recording Mode, Line-in Recording Volume, Line-in Auto-Sync and Line-in/External Mic on Control Menu. Refer to page 5-24/5-25 for details.

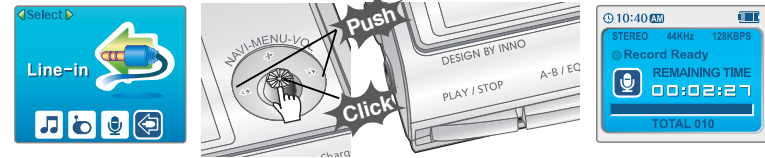
## Recording from an external audio source

### Recording from an external audio source

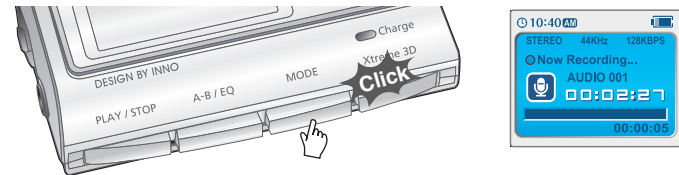
- 1 Press and hold the MODE/REC button. The current function appears on the LCD screen.



- 2 Press the NAV/MENU button to the ◀◀ or ▶▶ direction to select Line In mode. Press the NAV/MENU button (or PLAY/STOP) to enter recording standby mode.



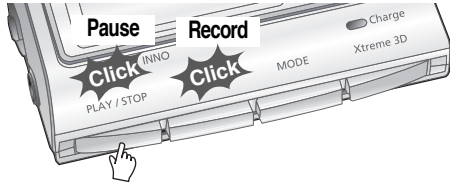
- 3 Begin playback on the external device and then press the MODE/REC button on the iriver player to begin recording.



## Recording from an external audio source

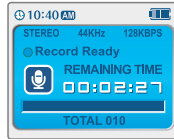
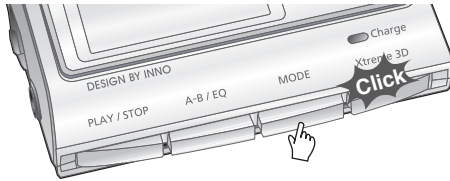
### To pause recording from the External Source

Press the PLAY/STOP button to pause the recording process. Press the PLAY/STOP button again to restart recording.



### To stop recording from the External Source

Press the MODE/REC button to stop recording.



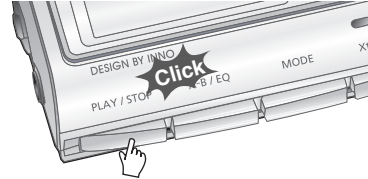
#### Note

- The recorded file is saved as AUDIO000.REC, AUDIO001.REC... in sequential order. Files are saved in the RECORD folder.
- Files recorded using an external microphone are saved as EXMIC000.REC.

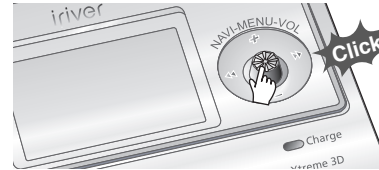
## Recording from an external audio source

### To play a recorded file

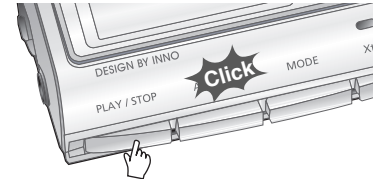
- 1 Press the PLAY/STOP button at stop mode.



- 2 After pressing the NAV/MENU button, select a recorded file using the VOL + or VOL - switch.



- 3 Press the PLAY/STOP button to play.

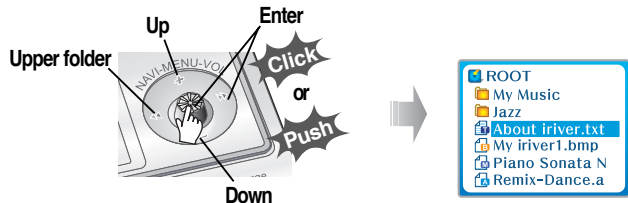


## To read a text file

- 1 Press the NAVI/MENU button to enter NAVI mode.



- 2 Push the NAVI/MENU button toward VOL+, VOL- or <<< , >>> to select the text file.

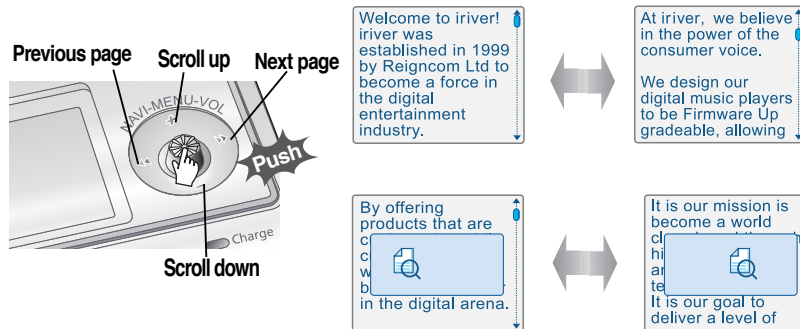


- 3 Press the NAVI/MENU or > (PLAY/STOP) button to display the text.



## To search a text file generally

1. Push the NAVI/MENU button toward VOL+ or VOL- to scroll up or down line .
2. Push the NAVI/MENU button toward <<< or >>> to scroll next or previous page.
3. Push and hold the NAVI/MENU button to scroll quickly with displayed search icon.



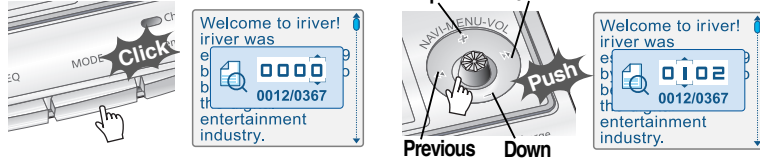
### Note

- The maximum number of characters that can be displayed in the screen is : English: 19 characters per line, 8 lines.
- Viewing will resume from the location last seen when returning to a previously viewed text file
- The backlight will remain on while viewing text files.
- If you see a text file during playing a music, the sound may cut out.



## To go to specific position(Useful for large files)

- 1 Press the MODE/REC button to move the desired position of the text.
- 2 Push the NAVIMENU button toward VOL+, VOL- or <<<, >>> to select desired digit or numeral.



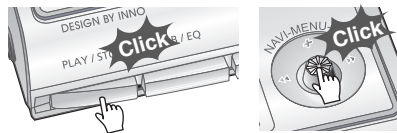
- 3 Press the NAVIMENU or >/■(PLAY/STOP) button. The TEXT goes to the selected position.



Press the MODE/REC button to cancel searching.

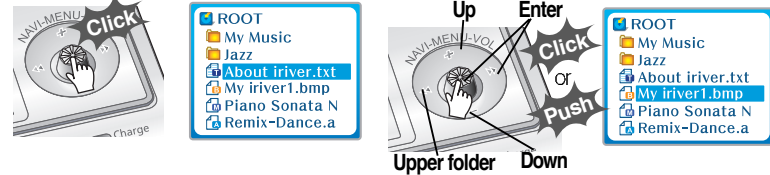
## To exit Text viewer

Press the NAVIMENU or >/■(PLAY/STOP) button to exit during reading the text.

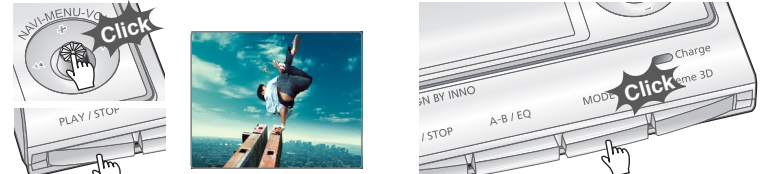


## To set My image

- 1 Press the NAVIMENU to enter navigation mode.
- 2 Push the NAVIMENU button toward VOL+, VOL-, <<< or >>> to select a picture file.



- 3 Press the NAVIMENU or PLAY/STOP button to display the full sized image.
- 4 Press the A-B/EQ(MEMORY) button to use as the background on player.



- 5 Push the NAVIMENU button toward <<< or >>> to select "Yes" or "No".
- 6 Press the NAVIMENU or >/■(PLAY/STOP) button to confirm.



To clear My Image

The My Image information file is saved as MYIMAGE.SYS in the ROOT folder. Delete the MYIMAGE.SYS to clear My Image by using Navigation-File/Folder delete function.

Note • The format will erase all files in your player. You must first backup My Image file from the player to your PC before formatting.

Deleting a picture

1 Press the MODE/REC button after displaying a picture to delete.



2 Push the NAV/MENU button toward <<< or >>> to select "Yes" or "No". Press the NAV/MENU or PLAY/STOP button to confirm.



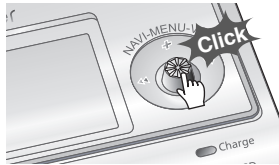
Music Navigation 5-1
Enjoying the sound equalizer(EQ) 5-4
Playback Mode 5-5
Playing in a favorite order(Program) 5-7
Customizing the function settings(Menu) 5-11
- Configuration 5-13
- General 5-15
- Display 5-17
- Timer 5-19
- Control 5-22
- Mode 5-26
- Sound 5-29

# Music Navigation

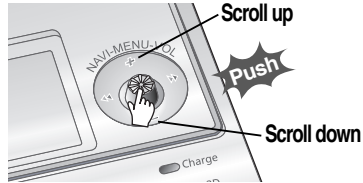
## Navigation

Navigation is the function used for searching files. Navigate to locate tracks to play.

### 1 To search



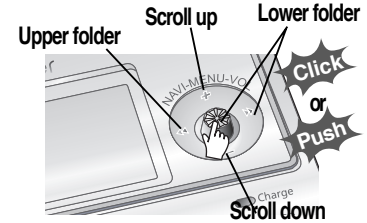
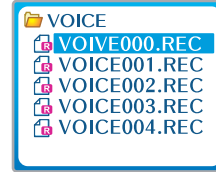
### 2 Scroll between folders



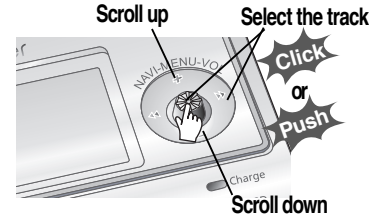
# Music Navigation

## Navigation

### 3 Select folder or scroll to upper folder



### 4 Select the file



**Note** • File type displayed as follows :

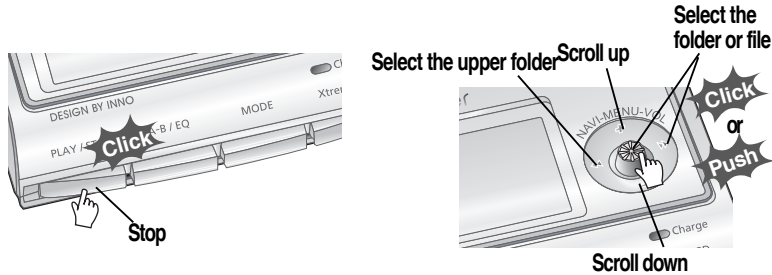
▷ MP3	▷ OGG
▷ IRM	▷ REC
▷ ASF	▷ WMA

• IRM (iriver Rights Management)  
iriver Rights Management is a digital music format.  
Please visit our web site for details about this music format.

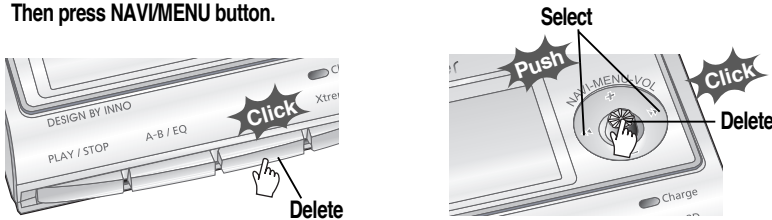
# Music Navigation

## Deleting a folder or file

- 1 Press the NAV/MENU button while the stop mode.  
Push the NAV/MENU button to the ◀◀ or ▶▶ direction to select a folder or file.



- 2 Press the "MODE" button. "Folder delete are you sure?" is displayed on the screen.  
Select "YES" by pushing the NAV/MENU button to the ◀◀ or ▶▶ direction to delete.  
Then press NAV/MENU button.

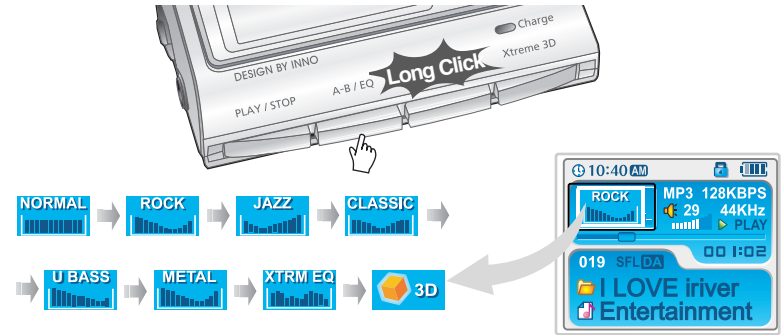


**Note** • You can only delete a blank folder. In order to delete a folder, you must first delete the files in the folder.

# Enjoying the sound equalizer (EQ)

## EQ Mode

You can select EQ mode in accordance to the playing music genre.  
Press and hold the A-B/EQ(MEMORY) button to display the current EQ setting.  
Then press the button repeatedly to choose a different EQ.



**Note** • Please refer to the Function Control (Page 5-29/30) for configuring Xtreme EQ.  
• Please refer to the Function Control (Page 5-29/30) for configuring Xtreme 3D.

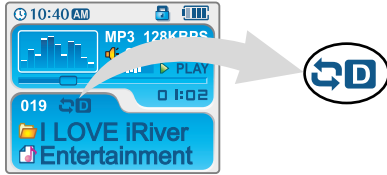
Convenient functions

Convenient functions

# Playback Mode

## Playback mode (Mode)

You can set various Repeat and Shuffle options by choosing these selections under Mode. Change the Repeat or Shuffle mode by pressing the varied pressing the MODE button. Please refer to the MODE function controls (page 5-26) for user-defined configuration.



## Playing repeatedly (Repeat)

	Play a single track repeatedly.
	Play all tracks in the folder and stop.
	Play all tracks in the folder repeatedly.
	Play all tracks in the player repeatedly.

## Playing in random order (Shuffle)

	Randomly play all tracks in the player and stop.
	Play a single track repeatedly. Push the NAV/MENU lever toward  or  to select a new track to play randomly.
	Skip forward will select a new random track to play repeatedly. Randomly play all tracks in the folder and stop.
	Randomly play all tracks in the folder repeatedly.
	Randomly play all tracks in the player repeatedly.

# Playback Mode

## Intro

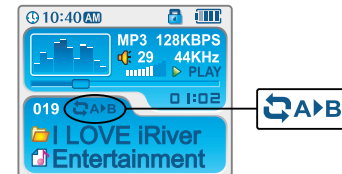
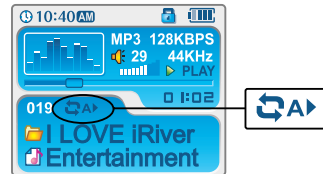
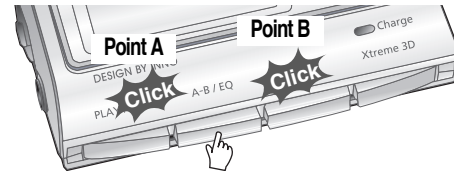
**I** INTRO: Plays the beginning 10 seconds of each track in sequential order.

INTRO HIGHLIGHT: Plays 10 seconds from 1 minute into each track in sequential order. You can set this function in the MENU function.

## Repeating a specific segment (A-B repeat)

You can play a specific segment repeatedly(A-B repeat).

Press the A-B/EQ/MEMORY button once to select the beginning <A> point.  
Press the button again to select the ending <B> point.  
A-B interval will be repeated.

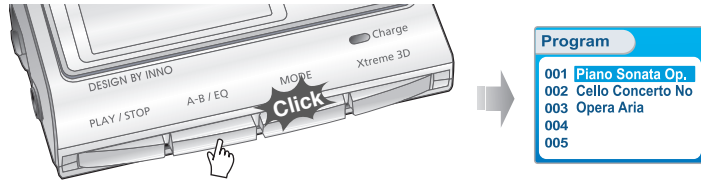


## Playing in a favorite order (Program)

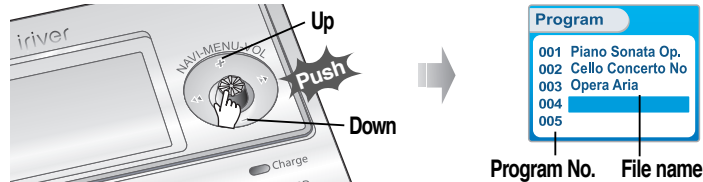
### Activating program mode

Program mode: Create your own playlist.

- 1 Stop playback, then press the A-B/EQ(MEMORY) button to display the program list. If the player has been programmed already, the current program list will display.



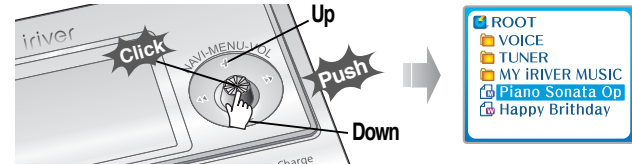
- 2 Push the NAV/MENU button toward VOL+ or VOL- to select the position for the next song to be added to the program list.



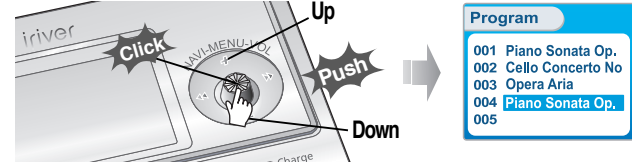
## Playing in a favorite order (Program)

### Activating program mode

- 3 Press the NAV/MENU button, then highlight the music to program by using the VOL+, VOL- switch. You can select an individual track or an entire folder. (Sub-folders will not be added.)

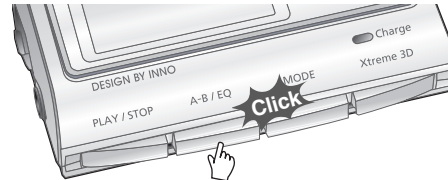


- 4 Press the NAV/MENU button to add the highlighted item to the program list.



Repeat steps 2-4 to add additional tracks to the program list.

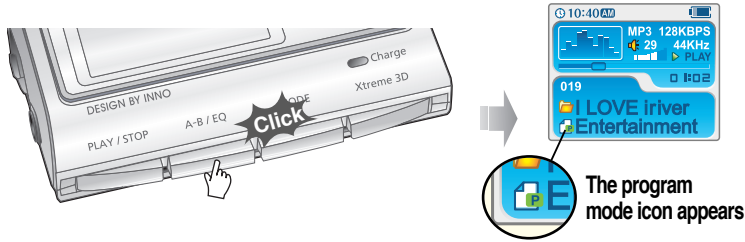
- 5 Once all desired tracks have been added to the list, press the A-B/EQ(MEMORY) button to save the program list.



## Playing in a favorite order (Program)

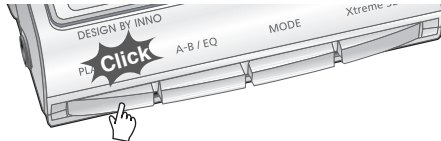
### Program play

After programming, press the PLAY/STOP button to play the tracks in sequential order.

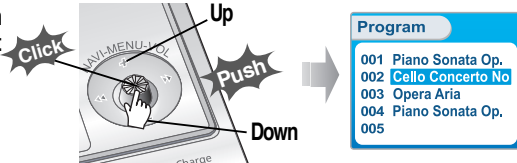


### To remove files from the program list

- 1 Press PLAY/STOP to end playback of the current program list. Enter program mode.



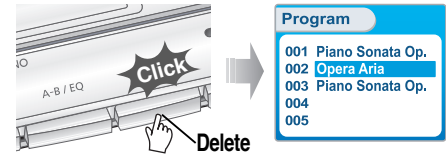
- 2 Push the NAV/MENU button toward VOL+ or VOL- select a track to remove from the program list.



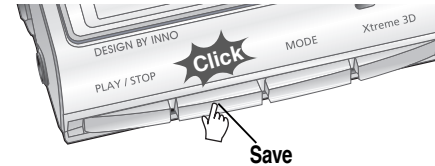
## Playing in a favorite order (Program)

### To remove files from the program list

- 3 Press MODE/REC button to remove the selected track.

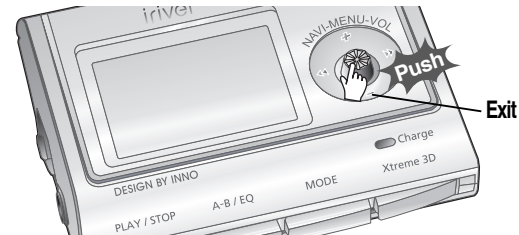


- 4 Press A-B/EQ(MEMORY) to save the updated program list.



### To cancel program mode

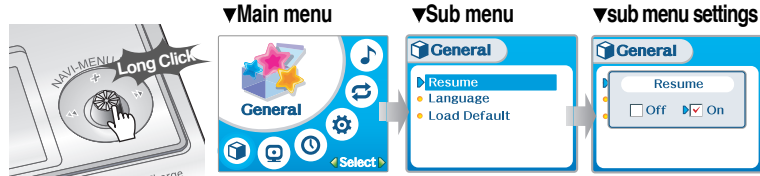
Press the NAV/MENU button during program playback to cancel playing the current program list.



# Customizing the function settings (Menu)

## Basic operation

- Press and hold the NAVI/MENU button to display the menu system.
- The MENU system is composed of 6 main menus with sub-menus.



## To select Main Menu

- 1 Push the NAVI/MENU button to the <<< or >>> direction to select menu.



- 2 Press the NAVI/MENU button to view the menu contents.



# Customizing the function settings (Menu)

## Enter Sub Menu

Push the NAVI/MENU button to the <<< or >>> (VOL + or VOL -) direction to select sub menu. Push the NAVI/MENU button to confirm.

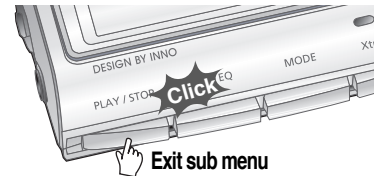


You can set, cancel or change sub menu by pushing the NAVI/MENU button toward <<<, >>> or VOL +, VOL -.



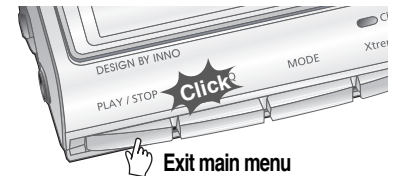
## Exit Sub Menu

Press the PLAY/STOP button to return Main MENU at the sub-menu setting.



## Exit Main Menu

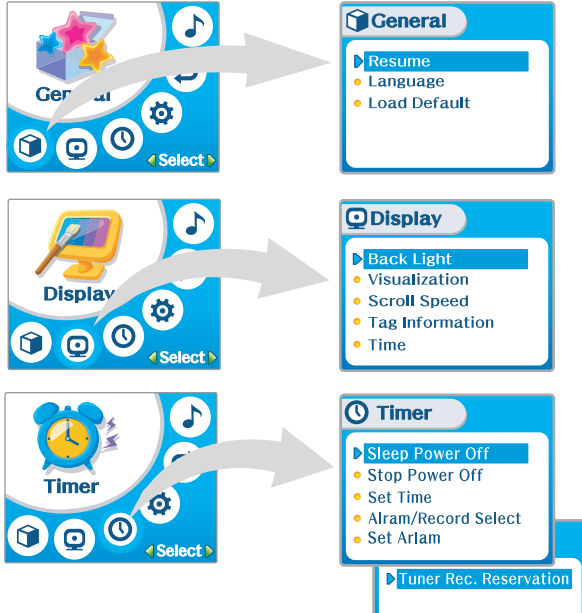
Press the PLAY/STOP button to exit Main Menu.





## Customizing the function settings (Menu)

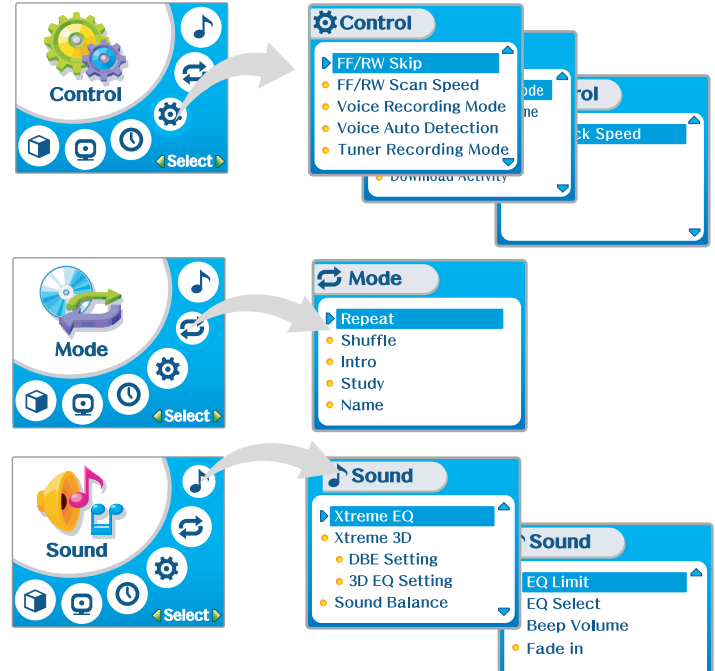
### Configuration



- Note**
- Functions are subject to change with different firmware versions.
  - Users can configure their own settings.

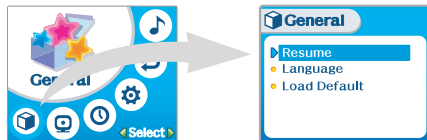
## Customizing the function settings (Menu)

### Configuration



## Menu-General

### General



### Resume

ON : Playback resumes from the previous location in a song when the player is stopped or powered off.

OFF : Playback begins from the first track after the player is stopped or powered off.



### Language

Support 40 languages

Song title and ID3 tag information is dependent on the version of the PC operating system that was used to create it.

(For example, if an MP3 file is created in a English version of Windows, the language setting should be English for the proper title display)



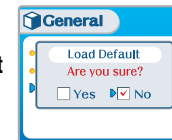
## Menu-General

### Load Default

Initialize menus to the original factory settings.

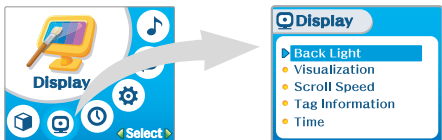
The button's operation order is as below.

Press NAV/MENU (select default menu) → ||◀◀ or VOL+ (select YES) → Press NAV/MENU (select YES : Initialization)



## Menu-Display

### Display



### Back Light

You can adjust the time that the Backlight stays on.

Sec : The backlight stays on from 3 to 30 seconds.

Min : The backlight stays on from 1 to 30 minutes.

Always : The backlight turn on always .

Press the NAV/MENU button to set Sec/Min/Always.



### Visualization

During playback, you can display visualizations, the elapsed time of the track, or the free memory on your player.

Waveform ▶



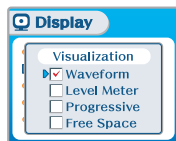
Progressive ▶



Level Meter ▶



Free Space ▶



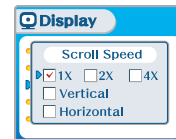
## Menu-Display

### Scroll Speed

Adjust scroll speed by 1x / 2x / 4x / Vertical / Horizontal.

Vertical : The scroll goes up and down

Horizontal : The scroll goes from the left to the right.



### Tag Information

On : Display track with ID3 tag information

Off : Display track with file name

**Note** • File name will be displayed by default for songs with no ID3 information

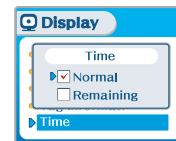


### Time

Normal : display elapsed time.

Remaining : display remaining time.

**Note** • Time display may not be accurate for files encoded in Variable Bit Rate formats.



## Timer



### Sleep Power Off

Automatically turns the power off after a fixed time.  
 (Time range can be set from 0 to 180 minutes by one minute increments.)  
 You can listen to the beep sound at 1 minute before powering off by setting BEEP to ON. Use the  $\lll$  or  $\ggg$  switch to adjust time.  
 Set BEEP ON/OFF by pressing the NAVI/MENU button.  
 BEEP ON: A beep sound will play 1 minute before power off.  
 BEEP OFF: No warning sound will be played prior to power off.  
 • Once powered off, the sleep timer will reset to 0.



### Stop Power Off

Automatically turns the power off at the stop mode.  
 (Time range can be set from 1 to 60 minutes by a minute)  
 Use the  $\lll$  or  $\ggg$  switch to adjust time.



## Set Time

Set the current time.  
 Push the NAVI/MENU switch toward  $\lll$  or  $\ggg$  to select the item and toward VOL + or VOL - to set the clock.  
 Use the  $\lll$  or  $\ggg$  switch to adjust time.



• A day of the week is automatically set.

## Alarm/Record Select

OFF : The Alarm and Tuner Record functions are disabled and the player will not power on at either indicated time.

ALARM : At the time indicated in the "Set Alarm" setting the player will power on and begin music playback.

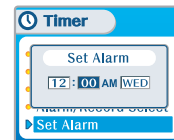
TUNER RECORD : At the time indicated in the "Tuner Rec. Reservation" setting (see page 5-21) the player will power on and begin recording from the selected radio station.



Push the NAVI/MENU button toward  $\lll$  or  $\ggg$  (VOL + or VOL -) to select the item.

## Set Alarm

Set the working time of alarm.  
 Push the NAVI/MENU switch toward  $\lll$  or  $\ggg$  to select the item and toward VOL + or VOL - to set the alarm.  
 DAY : Alarm rings at the set time of the set day repeatedly.  
 ALL : Alarm rings at the set time everyday.



# Menu-Timer

## Tuner Rec. Reservation

Set the time and station to be recorded.  
Push the NAV/MENU switch toward  $\lll$  or  $\ggg$  to select the item and toward VOL + or VOL - to set the recording time.

**DAY** : Tuner recording is started at the same time of the set day repeatedly.

**ALL** : Tuner recording is started at the set time every day.

**End Time** : Can set the range of recording time from 10 Min. to 240 Min.



# MENU-Control

## Control



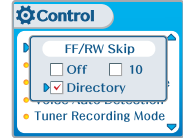
## Fast Skip

This defines the operating method of short or long press of  $\lll$  or  $\ggg$  lever.

**OFF** : Skip doesn't activate.

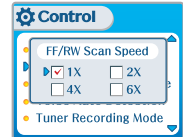
**10** : Skip 10 tracks at time.

**DIRECTORY** : Skip to previous or next folder.



## FF/RW Scan Speed

The fast scan speed can range from 1x/ 2x/ 4x/ 6x.



## MENU-Control

### Voice Recording Mode

You can adjust recording quality when recording voice.

**ON** : When recording voice, the recording level is automatically controlled and recordings from long distances are enhanced.

**OFF** : AGC(Automatic Gain Control) not activated.

Bit Rate : 8Kbps~160Kbps

Sampling Frequency : 11.025KHz ~44.1KHz



### Voice Auto Detection

The voice recording mode will automatically pause during silence. This is useful for recording over a long period of time to save memory.

**OFF** : Voice Auto Detection is disabled.

**Voice Auto Detection** : Set the relative level of sound needed to activate the recorder. (Level 1- Level 10).

**Record pause time setting** : Set the number of seconds of silence to record before pausing.(1-10 sec)



### Tuner Recording Mode

You can adjust recording quality when recording from the FM Tuner.

**Mono** : Recorded to Mono sound.

**Stereo** : Recorded to Stereo sound.

Bit Rate : 8Kbps~320Kbps

Sampling Frequency : 11.025KHz ~44.1KHz



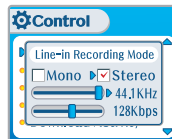
## MENU-Control

### Line-in Recording Mode

You can adjust recording quality when recording from external equipment.

Bit Rate : 8Kbps~320Kbps

Sampling Frequency : 11.025KHz ~44.1KHz



### Line-in Record Volume

You can adjust recording level when recording from External equipment.

(You can set from 0 to 64.)



### Line-in Auto Sync

Line-In, a new file will be created for each track on the CD automatically.

- **OFF** : Audio signal detection is disabled.

- **Audio signal detection time (1-5 seconds)** : The amount of silence the player will use to determine when a track has ended and to start a new file.



## Menu-Control

### Line-in/Ext. Mic

You can select external microphone or line-in when recording.  
Line-In : To record through Line-In  
Ext. Mic : To record through an external microphone

- Note**
- To record from an external microphone, chose the LINE-IN recording mode.
  - The recording quality level will be set to the values chosen for LINE-IN recording.



### Download Activity

Select whether the player is operated for a music playback or file transferring while the player is attached to the PC.

OFF : The player will playback audio files while connected to the PC (to save battery life).

ON : The player to show "Connected to USB" on the screen and you can transfer files to the player.

- Note**
- When the player turns off and on, Download Activity is always set to ON.



### Playback Control

Adjust the playback speed.

FAST: Playback speed will be increased and tracks will play faster than normal.

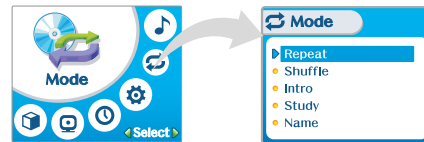
SLOW: Playback speed will be decreased and tracks will play slower than normal.

The default value is "0" and the music is played as normal speed.



## Menu-Mode

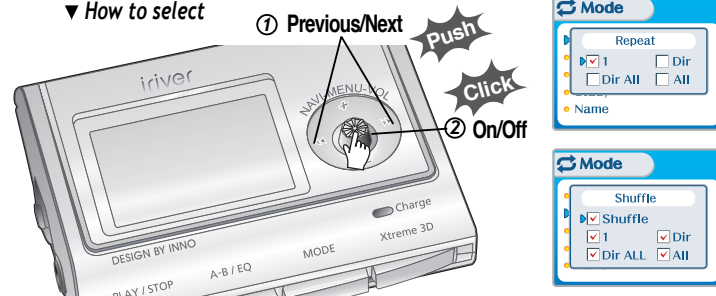
### Mode



### Repeat/Shuffle

While an audio file is playing, press the MODE/REC button to activate selected playback mode, such as Repeat or Shuffle. (Multi selecting available)

▼ How to select



- Note**
- Only the selected play mode will be available when you press the MODE/REC button (For details, please refer to page 5-5)

# Menu-Mode

## Intro

**Intro** : Plays the beginning 10 seconds of each track.

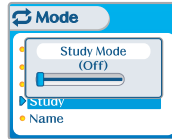
**Intro Highlight** : Plays 10 seconds from 1 minute into each track in sequential order.



## Study

While playing, short slide of the <<< or >>> lever will skip the current track set time ahead.

**OFF** : Study Mode is disabled.  
The range is 1~60 seconds.

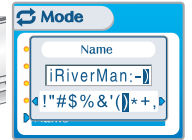
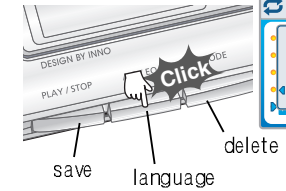
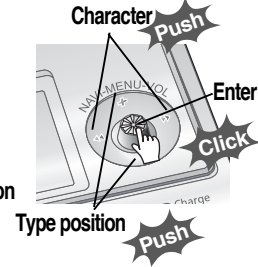


# Menu-Mode

## Name

You can input your name or custom text displayed at the stop mode.

- Select the character by pushing the NAV/MENU button toward <<< and >>> and press Navi/Menu button to input the character.
- To move the cursor in the name window, push the NAV/MENU button toward VOL + or VOL -.
- To scroll between English and your preferred language, use the A-B/EQ (MEMORY) button.
- To delete the character, press the MODE button.
- Press the PLAY/STOP button to save and exit.



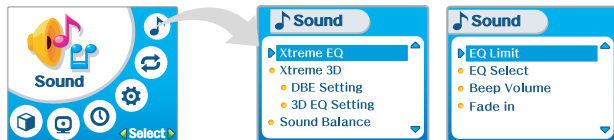
**Note** • Chinese and Chinese characters are not supported in the Name feature.

Convenient functions

Convenient functions

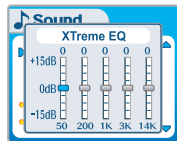


## Sound



## Xtreme EQ

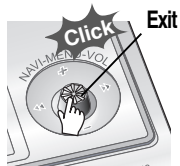
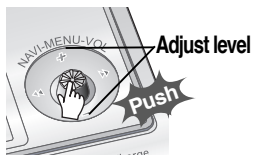
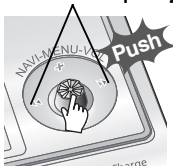
You can adjust the sound to your preference. There are 5 band frequency steps, set from -15dB to +15dB by 3dB step.



### •How to set Xtreme EQ

1. Select the Frequency step to set using the  $\lll$  or  $\ggg$  switch.
2. Adjust the level using the VOL + or VOL - switch.
3. To exit Xtreme EQ setting

Select the frequency

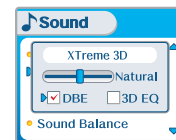


## Xtreme 3D

You can adjust the level of 3D sound (minimum, Natural, and Maximum).

You can extend 3D sound by selecting Bass Boost or 3D EQ.

You can also adjust the level of 3D sound with the  $\lll$  or  $\ggg$  lever. Select DBE or 3D EQ with the NAVI/MENU button.



## DBE Setting

DBE (Dynamic Bass Enhancement) enhances Low & Middle frequencies and only operates when using Xtreme 3D.

You can select the Bass Center Band level from Band 1 to 4. You can also set the Bass Boost gain from 0 dB to 15dB by 3dB step.



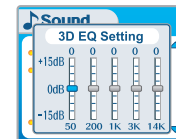
## 3D EQ Setting

Set EQ to User EQ to use 3D EQ.

You can adjust the sound to your preference.

There are 5 band frequency steps, set from -15dB to +15dB by 3dB step.

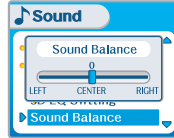
- The way of 3D EQ setting is similar to that of setting Xtreme 3D.



## Menu-Sound

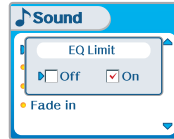
### Sound Balance

Balance your sound to the right or left or keep it in the center according to your preference. When Sound Balance bar is moved to L (Left, 20), the sound outputs at the left earphone. When the lever is moved to R (Right, 20) the sound outputs at the right earphone. The default value is 0 and the sound outputs the same level at both earphones.



### EQ Limit

**ON** : Limit the control of equalizer frequency to prevent distortion of sound.  
**OFF** : You can enjoy the original sound though distortion of sound may occur.



### EQ Select

You can select various EQ modes. Press the NAV/MENU button after selecting EQ by pushing the NAV/MENU button toward ◀◀ or ▶▶ (VOL +, VOL -) direction.



- Note**
- You can not select Normal EQ.
  - If you do not select Xtreme EQ or Xtreme 3D, Xtreme EQ or Xtreme 3D modes will not be available during playback in spite of adjusting the values.

## Menu-Sound

### Beep Volume

Set beep volume level.  
Set to "0" for OFF.



### Fade in

When activated, volume increases gradually at playback mode to prevent sudden loudness.





## Troubleshooting

Should any problem continue after you have checked these symptoms, please contact iriver customer support.

No Power	<ul style="list-style-type: none"><li>• Check whether the HOLD switch on the player is ON (Switch to OFF position)</li><li>• Battery may be discharged. Charge it after connecting the USB cable between the PC and the player.</li></ul>
No sound or distortion during playback.	<ul style="list-style-type: none"><li>• Check whether VOLUME is set to "0".</li><li>• Connect the earphones plug firmly.</li><li>• Check whether the plug is dirty. Clean the plug with a dry and soft cloth.</li><li>• Corrupted MP3 or WMA files may make a static noise and the sound may cut off. Listen to your files on the PC to see if they are corrupted.</li></ul>
Characters in LCD are corrupted.	<ul style="list-style-type: none"><li>• Check out Menu &gt;General &gt; Language and confirm whether the right language has been selected.(Refer to page 5-15)</li></ul>
Poor FM Reception.	<ul style="list-style-type: none"><li>• Adjust the position of the player and earphones. Turn off the power of other electric devices near the player.</li><li>• The Earphone cord functions as the antenna, they must be plugged in for best reception.</li></ul>
Failed download of MP3 file	<ul style="list-style-type: none"><li>• Check to see if the battery is discharged, charge if necessary.</li><li>• Check the connection between your computer and the player to ensure that the cable is secure.</li><li>• Check the Manager program to make sure it is operating.</li><li>• Check whether the player's memory is full.</li></ul>

## Precautions

### For Safety

- Avoid dropping or impacting the player.  
The player is designed to operate while walking or running, but dropping or excessively impacting the player may cause damage.
- Avoid contacting the player with water.  
Damage to the internal parts of the player may occur if the player comes into contact with water. If your player gets wet, dry the outside with a soft cloth as soon as possible.
- Do not leave the player in a location near heat sources, or in a place subject to direct sunlight, excessive dust or sand, moisture, rain, Mechanical shock, unlevelled surface, or in a car with its windows closed.
- Remove the battery if player is unused for long periods of time.  
Battery left in the player in a long time can corrode and damage the device.
- All data stored on this device may be erased by a excessive impact, a thunder or an electricity failure, etc. on the device.  
The manufacturer does not warrant and will not be held responsible in any way for damages or loss of data, including loss of data stored on this device, resulting from a excessive impact, a thunder or an electricity failure, You will be responsible for safe-guarding all data stored on this device.

### On headphones and earphones

- Road Safety  
Do not use headphones/earphones while driving, cycling, or operating any motorized vehicle. It may create a traffic hazard and is illegal in some areas. It can also be potentially dangerous to play your headset at high volume while walking, especially at pedestrian crossings. You should exercise extreme caution or discontinue use in potentially hazardous situations.
- Preventing hearing damage  
Avoid using headphones/earphones at high volume. Hearing experts advise against continuously loud and extended play. If you experience a ringing in your ears, reduce volume or discontinue use.
- Consideration for others  
Keep the volume at a moderate level. This will allow you to hear outside sound and to be considerate of the people around you.

## Accessories

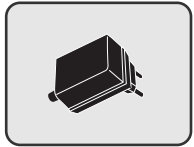
### 1 Earphone/ Earphone cover 2 Installation CD



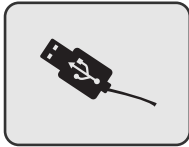
### 3 User Manual/ Warranty card/Quick Start Guide



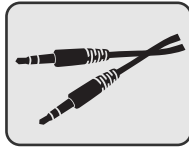
### 4 Adapter



### 5 USB cable



### 6 Audio Cable



### 7 Carrying Case



### 8 Arm Band



### 9 Neck strap for carrying



## Specifications

Memory	256MB	512MB	1GB
Model No	iFP-990	iFP-995	iFP-999

\* Memory is not expandable.

Category	Item	Specifications		
Audio	Frequency range	20 Hz ~ 20 KHz		
	Headphone Output	(L)18 mW + (R)18 mW (16 Ohm) max. Volume		
	S/N ratio	90 dB(MP3)		
FM Tuner	FM Frequency range	87.5 MHz ~ 108 MHz		
	S/N ratio	60 dB		
	Antenna	Headphone/Earphone-Cord Antenna		
File Support	File Type	MPEG 1/2/2.5 Layer 3, WMA, OGG, ASF		
	Bit Rate	8 Kbps ~ 320 Kbps (OGG : 44.1KHz, 96Kbps ~ 225Kbps)		
	Tag Info	ID3 V1, ID3 V2 2.0, ID3 V2 3.0, ID 3 V2 4.0		
LCD	260,000 Color Graphic LTPS (Low Temperature Poly Silicon) LCD with Backlight			
Language	40 Languages			
Voice Recording		Approx. 18:00 hrs (32kbps, 256 MB)	Approx. 36:00 hrs (32kbps, 512 MB)	Approx. 72:00 hrs (32kbps, 1GB)
	Max. Playtime	Approx. 40 hours (128 kbps, MP3, Volume : 20, EQ Normal, LCD off)		
USB	USB 2.0 (Up to 3x faster than USB 1.1)			
Dimension	64 (W) x 51 (H) x 20 (D) mm			
Weight	62g (Battery included)			
Battery	Rechargeable Battery			
Operational Temperature	-5 °C ~ 40 °C			



Memo

A large rectangular area with rounded corners, containing 15 horizontal lines for writing.

Memo



A large rectangular area with rounded corners, containing 15 horizontal lines for writing.

## Free Manuals Download Website

<http://myh66.com>

<http://usermanuals.us>

<http://www.somanuals.com>

<http://www.4manuals.cc>

<http://www.manual-lib.com>

<http://www.404manual.com>

<http://www.luxmanual.com>

<http://aubethermostatmanual.com>

Golf course search by state

<http://golfingnear.com>

Email search by domain

<http://emailbydomain.com>

Auto manuals search

<http://auto.somanuals.com>

TV manuals search

<http://tv.somanuals.com>