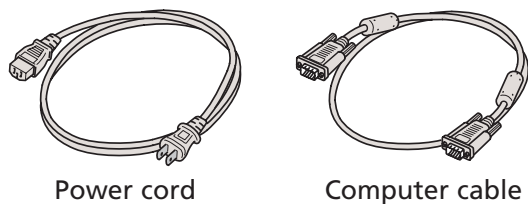


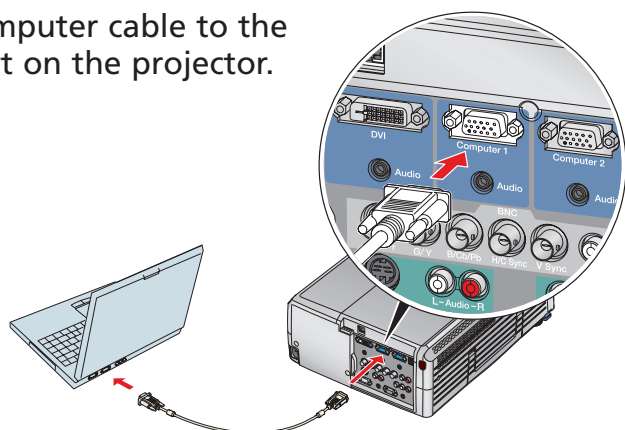
START HERE


## Connect the projector to your laptop

- 1 Locate the required cables:

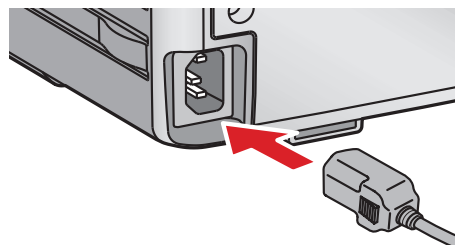


- 2 Connect the computer cable to the **Computer 1** port on the projector.



- 3 Connect the other end to your laptop's video-out or  monitor port.

- 4 Plug in the power cord.

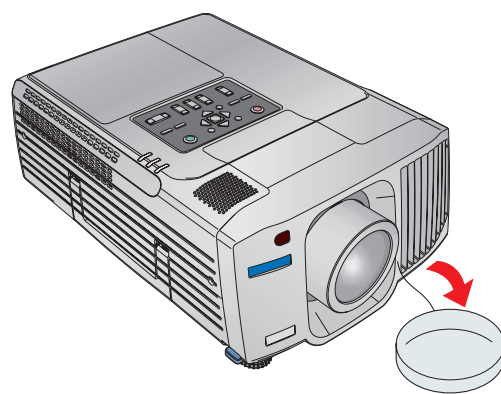



Follow these instructions to connect the projector to your laptop. For other setup options, see your *User's Guide*.

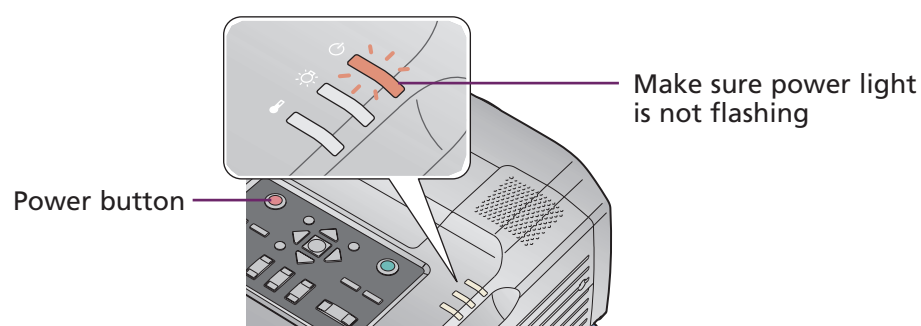
## Turn on your equipment

- 1 Turn on your laptop.

- 2 Remove the projector's lens cover.




- 3 Make sure the  power light is orange and not flashing.




- 4 Press the  **Power** button to turn on the projector.

### CAUTION: Before unplugging the projector...

To shut down the projector properly

1. Press the  **Power** button twice. Let the projector cool while the power light flashes orange (about 45 seconds).
2. Once the light stops flashing and stays on, it's safe to unplug the projector.

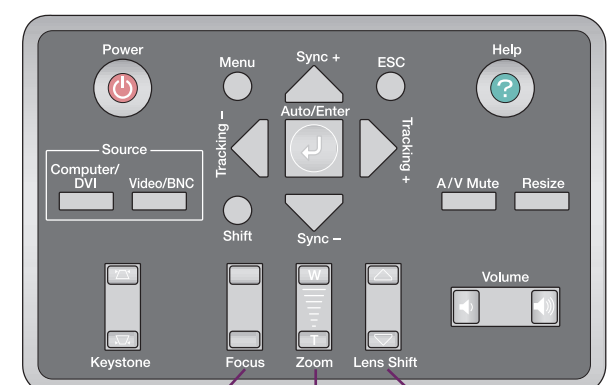
Never unplug the projector when the  power light is green or flashing orange.

## Adjust the image

- 1 If you've turned on your laptop and you don't see an image, press the **Computer/DVI** button on the projector to select **Computer 1** as the image source.

**NOTE:** If you still see a blank screen or have other difficulties, see the troubleshooting tips on the back of this sheet.


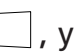
- 2 Adjust the sharpness, size, and height of the image:





**Focus**  
to sharpen  
the image

**Zoom**  
to enlarge  
the image

**Lens Shift**  
to adjust the  
image height

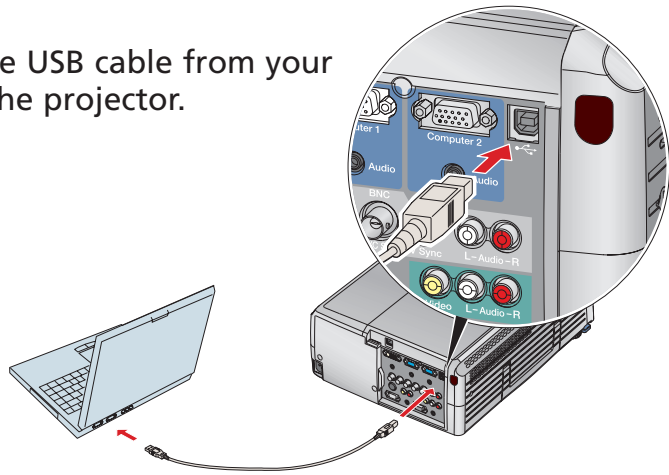
- 3 If your image looks like  or , you've placed the projector off to one side of the screen at an angle. Place it directly in front of the center of the screen, facing the screen squarely.

- 4 If your image looks like  or , use the **Keystone** button to square up the image.

## Using the remote control

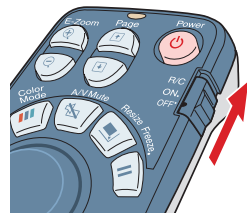
You can use the remote control in place of your computer's mouse. This lets you control your computer and give slideshow-style presentations from anywhere in the room.

- 1 Connect the USB cable from your laptop to the projector.

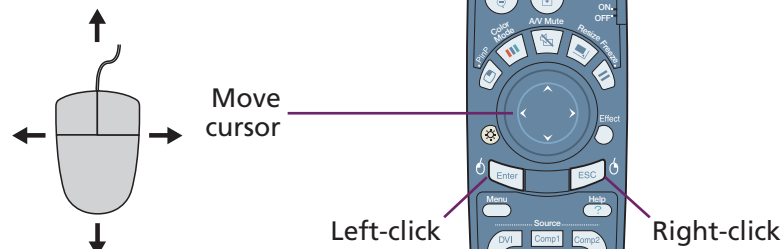


- 2 If necessary, set up your laptop to work with a USB mouse.

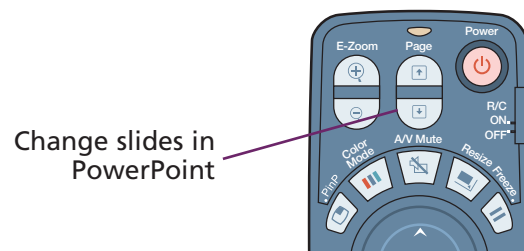
- 3 If this is your first time using the remote, make sure its batteries are installed. Then turn on the power switch on the side of the remote.



- Now you can use the remote control in place of your computer's mouse:



- You can also use the **Page up**  and **Page down**  buttons to change slides in PowerPoint.



For more information on using the remote control, see your *User's Guide*.

## Where to get help

### Telephone Support Services

To use the EPSON PrivateLine® Support service, call (800) 637-7661 and enter the PIN on the EPSON PrivateLine Support card included in your *Start Here* kit. This service is available 6 AM to 6 PM, Pacific Time, Monday through Friday, for the duration of your warranty period. You may also speak with a projector support specialist by dialing one of these numbers:

**U.S.:** (562) 276-4394, 6 AM to 6 PM, Pacific Time, Monday through Friday

**Canada:** (905) 709-3839, 6 AM to 6 PM, Pacific Time, Monday through Friday

Toll or long distance charges may apply.



### Electronic Support Services

EPSON provides technical assistance through electronic support services 24 hours a day at <http://support.epson.com>. For tips, templates, and training for developing successful presentations go to <http://www.presentersonline.com>.

## Troubleshooting

### If you see a blank screen...

If you see a blank screen or the **No signal** message after turning on your laptop, check the following:


- Make sure the  power light on the projector is green and not flashing, and the lens cover is off.
- Press the **Computer/DVI** button on the projector to select **Computer 1** as the image source.
- If you're using a Windows laptop, press the function key on your keyboard that lets you display on an external monitor. It may be labelled **CRT/LCD** or have an icon such as . You may have to hold down the **Fn** key while pressing it. Allow a few seconds for the projector to sync up after changing the setting.

No signal (🔊 Help)

### If the projector and laptop don't display the same image...

If your image displays either on the projector or laptop, but not on both, check the following:

#### Windows

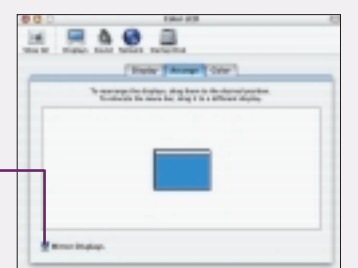
Try using the **CRT/LCD** or  function key as described above. On most systems, this key lets you toggle between the LCD screen and the projector, or display on both at the same time.

If that doesn't work, check your monitor settings to make sure both the LCD screen and the external monitor port are enabled. From the Windows Control Panel, open the **Display** utility. In the Display Properties dialog box, click the **Settings** tab, then click **Advanced**. The method for adjusting the setting varies; you may have to click a **Monitor** tab, then make sure the external Monitor port is set as your primary display and/or enabled. See your laptop's manual or online help for details.

#### Macintosh OS X

1. From the Apple menu, select **System Preferences**, then select **Displays**.
2. Select the **Color LCD** dialog box.
3. Click the **Arrange** (or **Arrangement**) tab and click **Mirror Displays**.

Click here

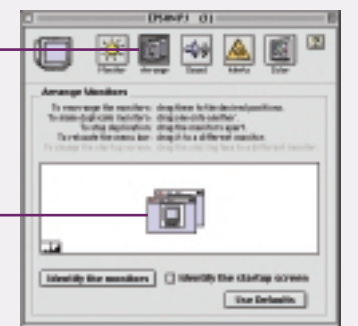


#### Macintosh OS 9.x or earlier

1. From the Apple menu, select **Control Panels**, then click **Monitors** or **Monitors and Sound**.
2. Click the **Arrange** icon.
3. Drag one monitor icon on top of the other.

Click here

Drag one monitor icon on top of the other



If the **Arrange** option isn't available, click the **Monitor** icon and select a **Simulscan** resolution.

## Free Manuals Download Website

<http://myh66.com>

<http://usermanuals.us>

<http://www.somanuals.com>

<http://www.4manuals.cc>

<http://www.manual-lib.com>

<http://www.404manual.com>

<http://www.luxmanual.com>

<http://aubethermostatmanual.com>

Golf course search by state

<http://golfingnear.com>

Email search by domain

<http://emailbydomain.com>

Auto manuals search

<http://auto.somanuals.com>

TV manuals search

<http://tv.somanuals.com>