

**GRAND
TOURING®
SERIES**

gto506c

gto606c

gto6506c

**component
systems
owner's
manual**

THANK YOU

for purchasing a JBL Grand Touring® Series automotive loudspeaker component system. We've organized this manual to make your installation as simple and trouble-free as possible. Please read it thoroughly before proceeding. Remember to keep your sales receipt and this manual in a safe place so both are available for future reference.

JBL

THE OFFICIAL BRAND
OF LIVE MUSIC.®



Designed and
Engineered
in the USA

INSTALLATION WARNINGS AND TIPS

ABOUT THESE INSTRUCTIONS

Installation of automotive stereo components can require extensive experience with a variety of mechanical and electrical procedures. Although these instructions explain how to install Grand Touring Series Component Systems in a general sense, they do not show the exact installation methods for your particular vehicle. If you do not feel you have the experience, do not attempt the installation yourself, but instead ask your authorized JBL car audio dealer about professional installation options.

LOUD MUSIC AND HEARING

Playing loud music in an automobile can hinder your ability to hear traffic, as well as permanently damage your hearing. The maximum volume levels achievable with JBL speakers, combined with high power amplification, may exceed safe levels for extended listening. We recommend using low volume levels when driving. JBL accepts no liability for hearing loss, bodily injury or property damage as a result of use or misuse of this product.

REAR DECK PRECAUTION

In some cars, fuel tanks may be located directly beneath the rear deck. Before installation, make sure there is adequate speaker basket clearance before considering this location!

ABOUT THE CONTENTS

The Grand Touring Series Component System includes:

- 130mm, 160mm and 165mm woofer
- Grille and mounting adapter(s)
- 1" tweeter with surface/flush I-Mount™ (patent no. 5,859,917) kits
- Crossover network with mounting screws

NOTE: The supplied crossover network is designed to work with the above-listed transducers. Do not substitute another crossover network or use other speakers when connecting the system (see Figure 8A and 8B).

INSTALLATION TIPS

- Always wear protective eyewear when using any tools.
- Turn off all audio components and other electrical devices before you start. Disconnect the (-) negative lead from your vehicle's battery.
- Keep speakers in their package until final installation. When moving a speaker, always rest it with the cone or dome facing up. Never use force to install any speaker.

- Check clearances on both sides of a planned mounting surface before drilling any holes or installing any screws. Remember that the screws can extend behind the surface.
- At the installation sites, locate and make a note of all fuel lines, hydraulic brake lines, vacuum lines and electrical wiring. Use extreme caution when cutting or drilling in and around these areas.
- Before drilling or cutting holes, use a utility knife to remove unwanted fabric or vinyl, to keep material from snagging in a drill bit or saw.
- For door installations, check the clearance with the windows throughout the range of the window's travel, and verify that a mounted speaker will not interfere with the window crank or power window mechanism.
- If mounting speakers elsewhere, check for clearance around rear deck torsion bars, glove box or other structural elements.
- Do not mount speakers where they will get wet.
- If possible, select a mounting site for the crossover network that is near the speakers and provides easy access for connections.

INSTALLATION

Figure 1. Mounting the GT0506c woofer with the grille.

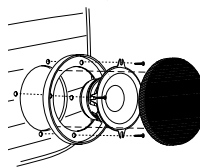


Figure 2. Mounting the GT06506c woofer with the grille.

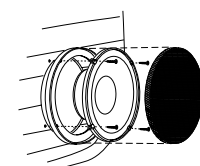


Figure 3. Mounting the GT0606c woofer in a standard 165mm opening.

NOTE: The GT0606c use an adapter to fit a variety of different 160mm openings. Select an appropriate adapter ring and secure it to the vehicle using the sheet-metal screws provided, then attach the speaker to the ring with the machine screws.

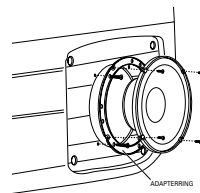
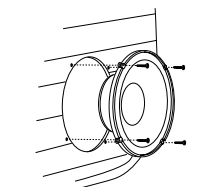


Figure 4. Mounting the GT0606c in a 160mm speaker location.



JBL

INSTALLATION

Figure 5. Mounting the tweeter using the I-Mount flush-mounting kit.

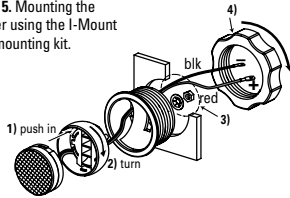


Figure 6. Aiming the tweeter at a desired listening position.

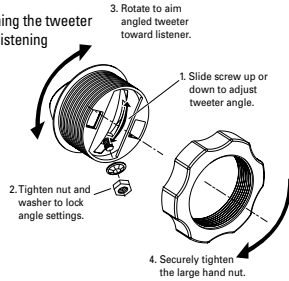
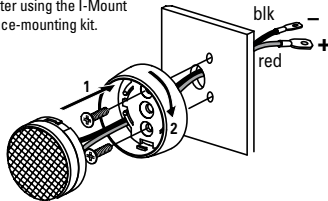


Figure 7. Mounting the tweeter using the I-Mount surface-mounting kit.



CONNECTIONS

Open the crossover housing by firmly squeezing the sides of the top half and lifting it away from the bottom. Using screws or a wire tie, mount the crossover using the holes provided. Observing proper polarity, connect the speakers and amplifier as shown in Figures 8A and 8B. Replace the cover when you are finished making the connections and adjustments (see following section).

Figure 8A. Wiring connections on the crossover network (shown with cover on).

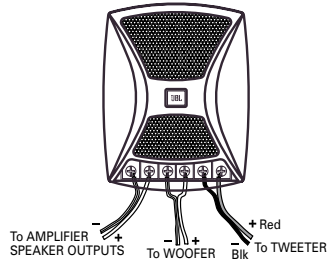
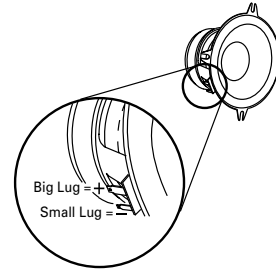


Figure 8B. Locating wiring connections on the GT0506c woofer. Other woofers are wired similarly.



SPECIFICATIONS

	GT0506c	GT0606c	GT06506c
Type:	130mm two-way component system	160mm two-way component system	165mm two-way component system
Speaker Impedance:	4 ohms	4 ohms	4 ohms
Power Handling:	55W RMS, 165W Peak	70W RMS, 210W Peak	70W RMS, 210W Peak
Sensitivity (2.83V, 1m):	89dB	90dB	90dB
Frequency Response:	70Hz – 21kHz	55Hz – 21kHz	55Hz - 21kHz
Mounting Depth:	59mm	53mm	59mm
Cut-Out Diameter:	120mm	131mm	143mm

General Care

The loudspeaker grilles may be cleaned with a damp cloth. Do not use any cleaners or solvents on the grilles or the speaker cones.

A valid serial number is required for warranty coverage.

Features, specifications and appearance are subject to change without notice.

Declaration of Conformity



We, Harman Consumer International
2, route de Tours
72500 Chateau-du-Loir
France

declare in own responsibility that the products
described in this owner's manual are in compliance
with technical standards:

EN 50081-1:1992
EN 50082-1:1997

Emmanuel Millot
Harman Consumer International
Chateau-du-Loir, France. 3/03

JBL Consumer Products

250 Crossways Park Drive, Woodbury, NY 11797 USA

1.800.336.4JBL (4525) • FAX 1.516.682.3523 • www.jbl.com

© 2003 Harman International Industries, Incorporated

JBL is a registered trademark of
Harman International Industries, Incorporated.

Part No. GTCOMPONENTSOM3/03

A Harman International Company

Free Manuals Download Website

<http://myh66.com>

<http://usermanuals.us>

<http://www.somanuals.com>

<http://www.4manuals.cc>

<http://www.manual-lib.com>

<http://www.404manual.com>

<http://www.luxmanual.com>

<http://aubethermostatmanual.com>

Golf course search by state

<http://golfingnear.com>

Email search by domain

<http://emailbydomain.com>

Auto manuals search

<http://auto.somanuals.com>

TV manuals search

<http://tv.somanuals.com>