

# MTS-8000 Portable Optical Network Tester

All your optical network testing needs covered in a single platform

## The power of one, performing the work of many

### A powerful unit

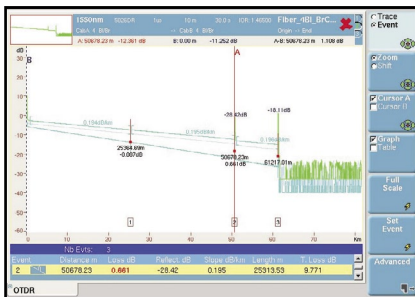
- Flexible scalable platform
- Industry-leading size and weight, e.g. platform + transport module < 7 kg
- Interchangeable modules
- Generates test results in seconds
- Fully automatic testing
- Combination of several tests
- Remotely controlled (via Ethernet, Fiber)

### Fiber Characterization Testing

- Optical Time Domain Reflectometer (OTDR)
- Chromatic Dispersion (CD)
- Polarization Mode Dispersion (PMD)
- Attenuation Profile (AP)
- Loss testing

### OTDR Module

- More than 20 OTDR modules
- Combined wavelengths MM: 850/1300 SM: 1310/1383/1550/1625 nm
- Dynamic range 30 dB up to 50 dB



Pass/Fail OTDR analysis

### Transport Module

- All in one module for Full PDH/T-Carrier & SDH/SONET testing up to 10 Gb/s
- Ethernet testing 10/100/1GigE/10GigE LAN & WAN up to the IP layer

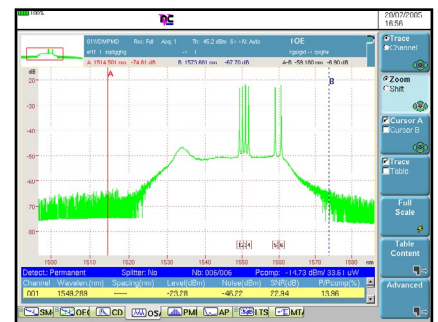
### Dispersion Modules

- PMD – Polarization Mode Dispersion
- CD – Chromatic Dispersion



### CWDM/DWDM Testing

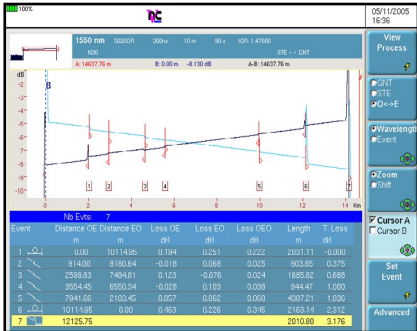
- OSA with frequency range from 1250 nm to 1650 nm
- DWDM parameters OSNR, optical channel power, wavelength deviation
- Application for EDFA and DFB testing
- Channel isolation for BER analysis
- Single or dual port analyzer



Amplified DWDM system analysis

2

# Fiber Characterization



Bi-directional OTDR analysis

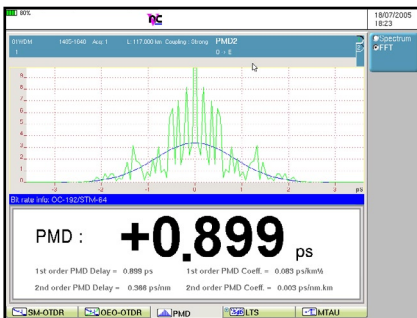
## PC software solution for report generation

### OFS-100 Results Analysis

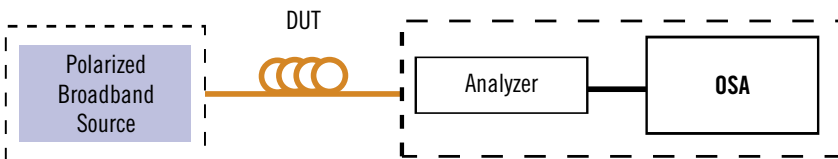
- OTDR, CD, PMD, AP, and OSA results analysis
- Batch processing capability via automation process
- Pass/Fail function
- Customized printouts

### OFS-200 FiberCable Acceptance Report Generation

- Complete fiber characterization reporting capability including bi-directional OTDR, CD, PMD, AP, IL and ORL results
- Advanced OTDR evaluation for loop back and mid-point management
- Powerful report preview
- Direct access keys for easy process and efficiency



PMD test results with Pass/Fail analysis

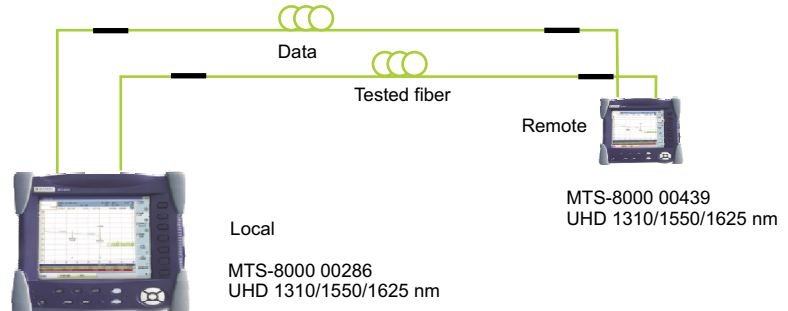


## Automatic bi-directional measurement function

- Automate the acquisition process
- Check fiber continuity
- File transfer through the fiber
- True splice loss with both end analysis
- Optical talkset option needed

## Built-in Optical Talkset

- Data transfer capability: file exchange or remote control
- Used also for fully automatic bi-directional measurements
- OTS-55 handheld for far end communication



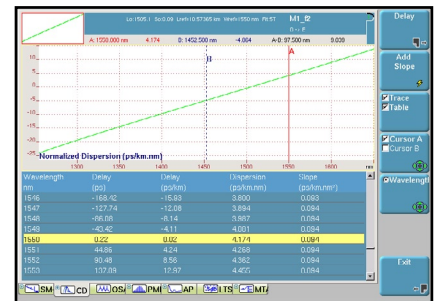
## Physical Fiber Testing

### Key features OTDR

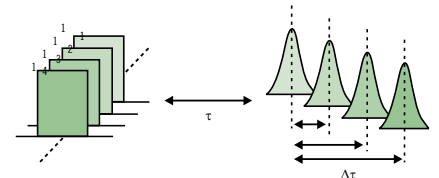
- Fast data acquisition enables VHD plug-in to reach 40 dB after 10 s with a maximum performance up to 45 dB
- Highest dynamic range with 50 dB at 1550 nm, UHD module
- New VLR module with outstanding dead zone of 0.8 m EDZ and 4 m ADZ, 43 dB dynamic
- Fastest scan speed at 0.1 s in real-time mode
- Up to 128000 acquisition points with sampling resolution down to 4 cm

## CD Module

- Pulse delay method complies with TIA/EIA FOTP-168
- Fast single-end measurement with sectional analysis capability
- CD analyzer and four-wavelength OTDR (1310/1480/1550/1625 nm) with one module

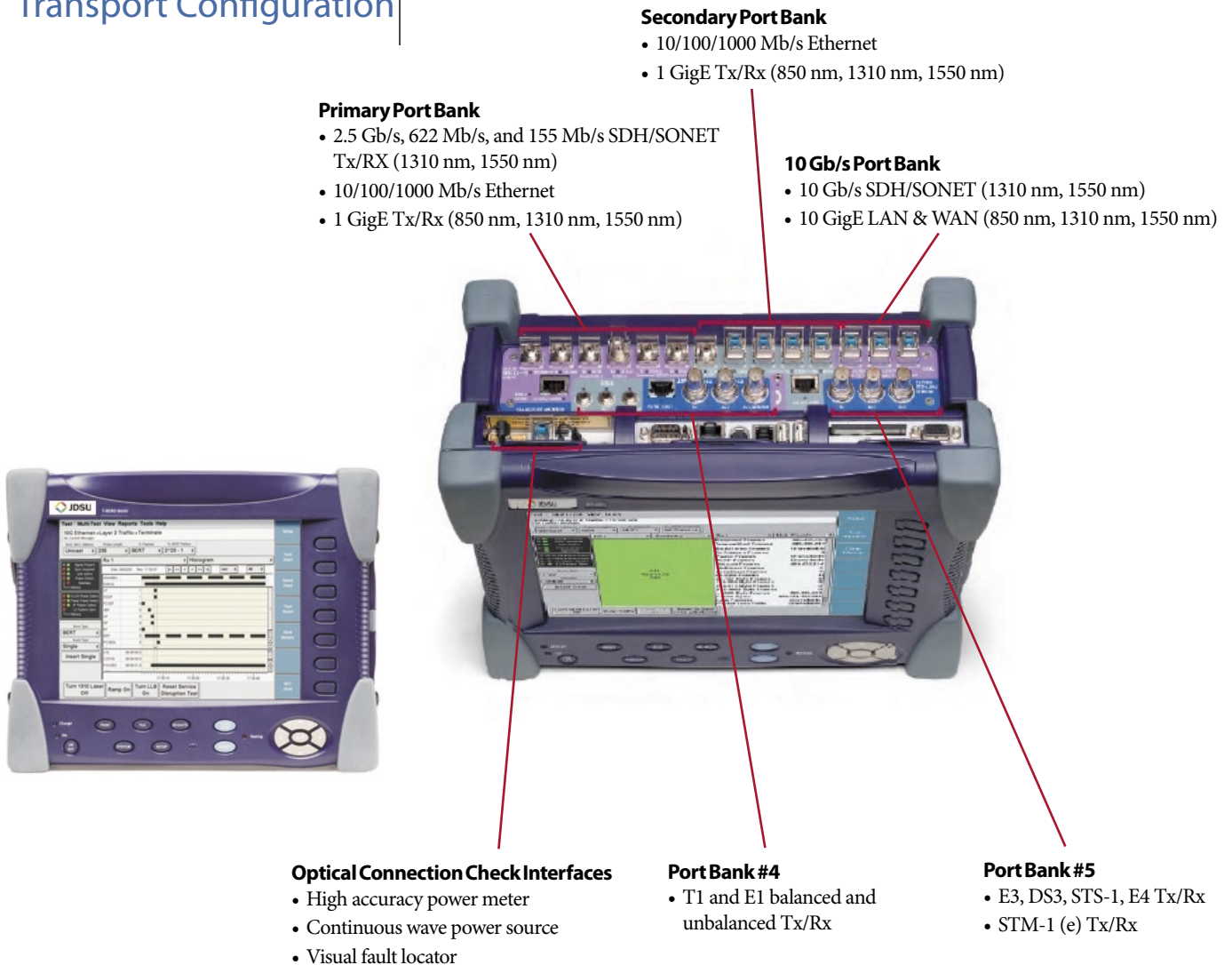


Single menu for chromatic dispersion trace and table display



Pulse delay method complies with TIA/EIA FOTP-168

## Transport Configuration

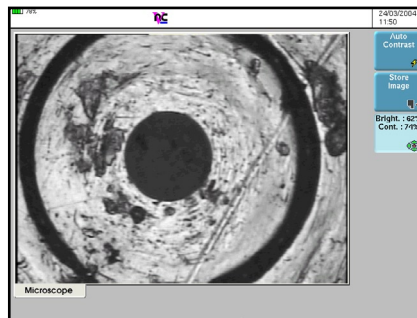


### Transport Module

- Contained in one 5 cm module
  - PDH / T-carrier interfaces include DS1, E1, E3, DS3, E4, STS-1 and STM-1e
  - SDH/SONET interfaces (1310 nm, 1550 nm) include 155 Mb/s, 622 Mb/s, 2.5 Gb/s, 10 Gb/s
  - Ethernet interfaces (850 nm, 1310 nm and 1550 nm) include 10/100/1000 Mb/s electrical and 1 GigE Optical
- **10 GigE LAN + WAN**
- Only 2.5 kg fully populated, total weight < 7 kg
- Fully scalable to meet your current and future needs
- Optical and electrical signal level measurements
- Up to 2.5 hours at **10 Gb/s rates** with one battery (2 batteries possible)
- Field exchangeable connectors for all standard connector types
- **SDH/SONET testing**
  - Mixed payload generation and analysis
  - Concatenated signals
  - Automatic Protection Switching (APS)
  - Overhead byte manipulation and analysis
  - Round Trip Delay (RTD)
- **Ethernet testing**
  - Single and dual port Ethernet configuration
  - Testing on Layer 1, 2 and 3 (IP)
  - VLAN support
  - Constant, burst and ramp traffic generation
  - Traffic filter capabilities
  - Automated RFC2544 testing
  - Loop-up /loop-down of far end device

### Connector Inspection Scope

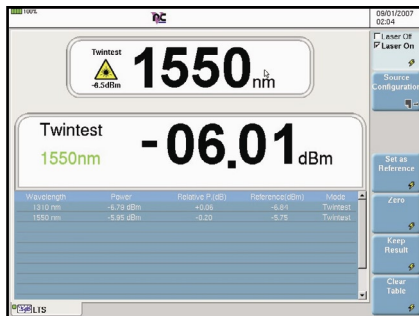
- Fiber Connector Inspection Connectors
- Patch panel inspection
- 250 or 400 magnification
- Uses MTS-8000 large screen (10.4")
- Comparison with 3 other images on the same screen



EFSCOPE250, EFSCOPE400: Optical video inspection probe

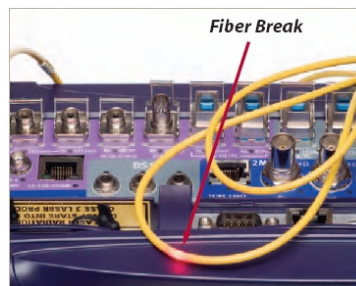
### Insertion Loss Measurements

- Power meter integrated in MTS-8000 mainframe
- Multi-wavelength laser source with CW or modulated signals
- Easy loss measurements of a jumper or patch cord



### Built-in 635 nm Visual Fault Locator

- Universal push/pull for all 2.5/1.25 mm connector types



### Alternatively

OVF-1 ball pen-sized separate visual fault locator



### OTS-55 SMART Optical Talkset

- $\geq 45$  dB dynamic range
- Wavelength of operation: 1550 nm



### Accessories



E80HCase5: Hard carrying case for single module configuration



E80SCase3: Soft carrying case for single module platform



E80keyB: USB keyboard

All statements, technical information and recommendations related to the products herein are based upon information believed to be reliable or accurate. However, the accuracy or completeness thereof is not guaranteed, and no responsibility is assumed for any inaccuracies. The user assumes all risks and liability whatsoever in connection with the use of a product or its applications. JDSU reserves the right to change at any time without notice the design, specifications, function, fit or form of its products described herein, including withdrawal at any time of a product offered for sale herein. JDSU makes no representations that the products herein are free from any intellectual property claims of others. Please contact JDSU for more information. JDSU and the JDSU logo are trademarks of JDS Uniphase Corporation. Other trademarks are the property of their respective holders. © 2006 JDS Uniphase Corporation. All rights reserved.

### Test & Measurement Regional Sales

**NORTH AMERICA**  
TOLL FREE: 1 866 228 3762  
FAX: +1 301 353 9216

**LATIN AMERICA**  
TEL: +55 11 5503 3800  
FAX: +55 11 5505 1598

**ASIA PACIFIC**  
TEL: +852 2892 0990  
FAX: +852 2892 0770

**EMEA**  
TEL: +49 7121 86 2222  
FAX: +49 7121 86 1222

**WEBSITE:**  
[www.jdsu.com/fiberoptictest](http://www.jdsu.com/fiberoptictest)

## Free Manuals Download Website

<http://myh66.com>

<http://usermanuals.us>

<http://www.somanuals.com>

<http://www.4manuals.cc>

<http://www.manual-lib.com>

<http://www.404manual.com>

<http://www.luxmanual.com>

<http://aubethermostatmanual.com>

Golf course search by state

<http://golfingnear.com>

Email search by domain

<http://emailbydomain.com>

Auto manuals search

<http://auto.somanuals.com>

TV manuals search

<http://tv.somanuals.com>