

This Data Sheet Includes Information On

Jenn-Air

• Product Model Number (s): •

Built-In Electric Warming Drawer:
JWD7030CDX

• Dimensions (Actual Size) •

Cutout width: 28 1/2"

Cutout height: 9 1/4"

Cutout Depth: 23 1/2"

Distance from face of cabinet to
outer edge of drawer handle: n/a

Overall unit width: 30"

Overall unit height: 10 1/2"

Depth with handle: n/a

Depth without handle: 23 1/4"

Oven overlap distances when using
cutout dimensions listed above:

Top overlap: 5/8"

Bottom overlap: 5/8"

Right side overlap: 3/4"

Left side overlap: 3/4"

• Additional Information •

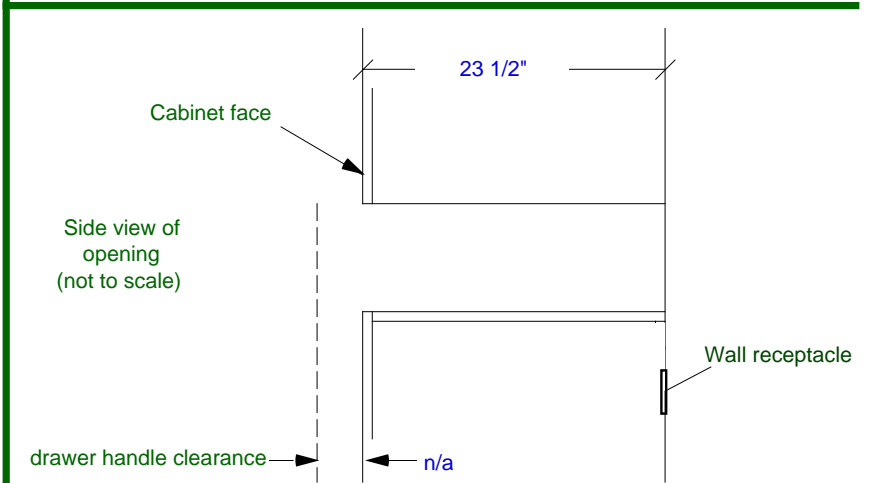
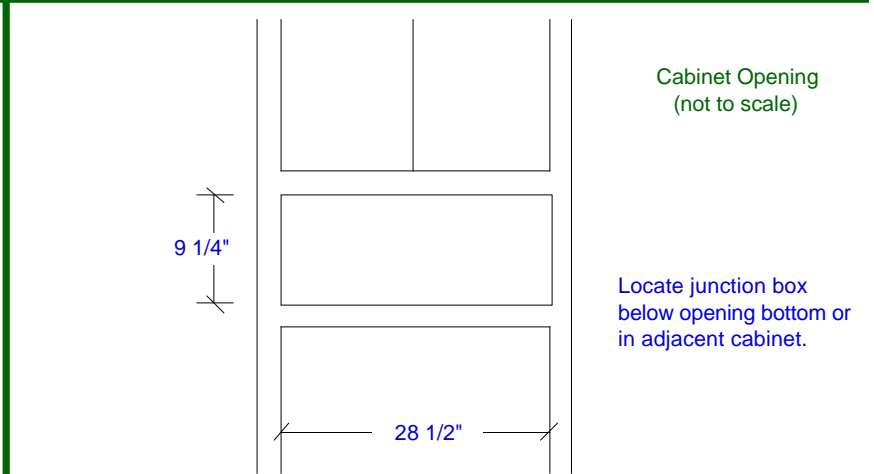
• Electrical requirements : 3 wire, 120V, 50-60Hz. 20 amp grounded circuit. Locate electrical out let in adjacent cabinetry within 42" of the right side of the opening or within 16" of the left side of the opening. DO NOT install receptacle above the top of the opening.

• When installing below a cooktop, allow a 2" minimum from bottom of cooktop burner box to top of warming drawer cutout.

• When installing below a oven, allow a 2" minimum between cutouts.

• The cutout bottom should be solid or have braces which adequately support the weight of the warming drawer, especially in the rear. Install a 2x2 or 2x4 anti tip block against rear wall 9" from bottom of opening to bottom of block.

See page 2 for additional information



Subject to change without notice. This system is designed to be updated daily if necessary. Dimension Express is not responsible for use of superseded, voided, or outdated data sheets. Because of the difficulty or impracticability of determining actual damages, liability of Dimension Express shall not exceed \$50.00.

Copyright © Dimension Express, 2003.

462

• NEVER reuse Data Sheets. Data Sheets are subject to change without notice. Dimension Express is a FREE service bureau and is updated daily, it makes far more sense to spend the time necessary to request new Data Sheets for each project, as opposed to the problems, time, costs, and risks associated with reusing old Data Sheets.

• Call Dimension Express if you have any questions at (775) 833-3633 •
• Always refer to a current Code at a Glance or manufacturer directory •
• Data Sheet codes change on the first of odd numbered months at 12:01am •

BN16 • A462B149 • 31646 • 031806 • 16257 • 73958

Built-In Electric Warming Drawer:
JWD7030CDX

Additional Information:

Drawer Front Options (5):

- JWD7130CDW: Curved Glass White Drawer Front. The distance from the cabinet face to the front edge of the drawer handle when drawer is OPEN: 25 1/4".
- JWD7130CDS: Curved Glass Stainless Drawer Front. The distance from the cabinet face to the front edge of the drawer handle when drawer is OPEN: 25 1/4".
- JWD7130CDB: Curved Glass Black Drawer Front. The distance from the cabinet face to the front edge of the drawer handle when drawer is OPEN: 25 1/4".
- JWD7130CDP: Pro Style Stainless steel drawer front. The distance from the cabinet face to the front edge of the drawer handle when drawer is OPEN: 27 7/16".
- JWD7130CDK: Kit for installing custom panel. When using kit, installation of a custom handle is required (purchase custom panel and handle separately) Custom panel size is 29 7/8" wide by 10 1/2" high. The edges of the custom panel must be finished.

Accessories:

- DRAWERPANS : (purchase separate) Five commercial pans with lids sized to exactly fit drawer.

Subject to change without notice. This system is designed to be updated daily if necessary. Dimension Express is not responsible for use of superseded, voided, or outdated data sheets. Because of the difficulty or impracticability of determining actual damages, liability of Dimension Express shall not exceed \$50.00. Copyright © Dimension Express, 2003.

149

• NEVER reuse Data Sheets. Data Sheets are subject to change without notice. Dimension Express is a FREE service bureau and is updated daily, it makes far more sense to spend the time necessary to request new Data Sheets for each project, as opposed to the problems, time, costs, and risks associated with reusing old Data Sheets.

- Call Dimension Express if you have any questions at (775) 833-3633 •
- Always refer to a current Code at a Glance or manufacturer directory •
- Data Sheet codes change on the first of odd numbered months at 12:01am •

BN16 • A462B149 • 31646 • 031806 • 16257 • 73958

Free Manuals Download Website

<http://myh66.com>

<http://usermanuals.us>

<http://www.somanuals.com>

<http://www.4manuals.cc>

<http://www.manual-lib.com>

<http://www.404manual.com>

<http://www.luxmanual.com>

<http://aubethermostatmanual.com>

Golf course search by state

<http://golfingnear.com>

Email search by domain

<http://emailbydomain.com>

Auto manuals search

<http://auto.somanuals.com>

TV manuals search

<http://tv.somanuals.com>