



# iRobot® Verro™

## QUICK START GUIDE

---

An easy step-by-step guide to using the  
iRobot Verro Pool Cleaning robot

**iRobot®**  
[www.irobot.com](http://www.irobot.com)

# iRobot® Verro™ Quick Start Guide

## How Verro Works

Verro has a powerful motor that pumps 80 gallons of water per minute through the robot, generating suction at two vacuum intakes under the robot. The water passes through a filter bag that traps dirt and debris down to two microns in size. (For comparison, the period at the end of this sentence is more than 500 microns in size.)

The force of the water being pumped up through the bottom of the robot and out through the top helps Verro maintain traction on the pool bottom and walls. Brushes at the front and back of the robot loosen particles attached to the walls and bottom of your pool so that they can be vacuumed up, along with all of the other loose dirt and debris.

Verro's coverage algorithm allows Verro to brush and clean your pool all the way from the bottom to the waterline in only 60 – 90 minutes.

### Tip

**Clean the filter bag regularly. Verro uses the force of the water pumped through its filter bag to maintain traction, particularly on the walls of the pool. If the filter bag is not kept clean, Verro will not clean properly and will not be able to climb the walls of the pool.**

### Tip

**Change the direction of the handle before each cleaning run to prevent the floating power cord from becoming twisted and to improve coverage of the entire pool.**

### Tip

**Store Verro in a dry place out of direct sunlight at a temperature between 50 and 104 degrees Fahrenheit. The Power Supply is water resistant, but not waterproof and may be damaged by rain. Failure to properly store Verro will result in loss of warranty.**

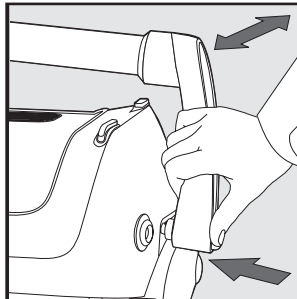
### Tip

**iRobot recommends using the mesh filter bag (available separately at [www.irobot.com](http://www.irobot.com)) when the pool contains a significant quantity of large debris (leaves, etc.), such as when the pool is opened for the season. The fine filter bag is ideal for filtering small debris (algae, sand, etc.) and for regular maintenance.**

### Tip

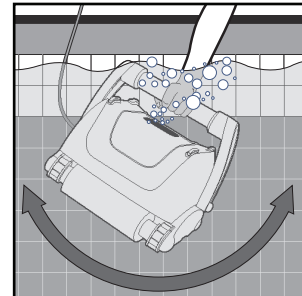
**Periodically straighten the floating power cord with the Detangler.**

- 1 Position the handle diagonally across Verro. Press button on the handle lock mechanism to move handle.



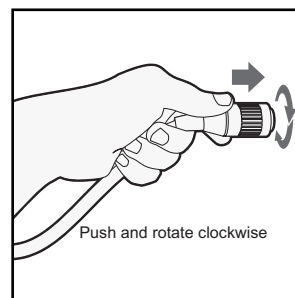
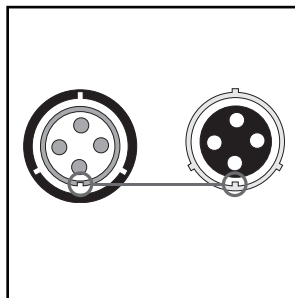
- 2 Uncoil the floating power cord and spread it over the surface of the water.

- 3 Place Verro in the water and rock it from side to side to allow air to escape. Let Verro settle to the bottom of the pool. Ensure that it is right side up and level.



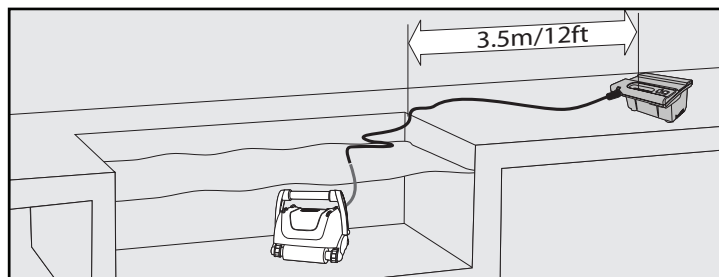
- 4 Place the Power Supply at least 12 feet from pool.

- 5 Plug the floating power cord into the Power Supply. Be sure not to force the plug as it will only go in one way. Once the plug is fully seated, turn the locking collar clockwise to lock it.

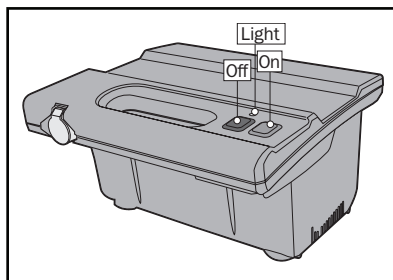


- 6 Ensure the Power Supply is at least 12 feet from the pool and plug it into a GFCI outlet. Ensure the electric outlet has been properly grounded. Never leave the Power Supply plugged in when Verro is not in use.

**Warning: To prevent risk of electrical shock, Verro must be used only with a properly installed and functioning Ground Fault Current Interrupter outlet.**



- 7 Press the green Power button to start Verro; the light on the Power Supply will illuminate and Verro will start. The length of the cleaning cycle will vary based on pool size. To stop Verro before the end of the cleaning cycle, press the red Power button on the Power Supply.



**LIGHT:** Light indicates that the robot is ON

**ON:** Green button turns the robot ON

**OFF:** Red button turns the robot OFF.

# iRobot®

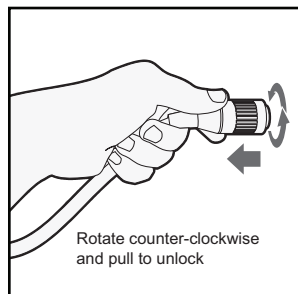
Instructional photos available at [www.irobot.com/usetips](http://www.irobot.com/usetips)

Download from [Www.Somanuals.com](http://Www.Somanuals.com). All Manuals Search And Download.

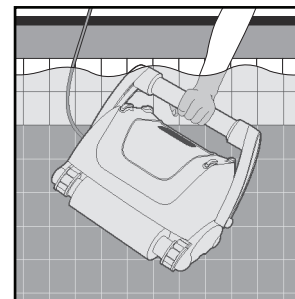
# iRobot® Verro™ Quick Start Guide

## Quick Start (cont...)

- 8 When Verro has finished cleaning the pool, it will stop automatically and the light on the Power Supply will go OFF.
- 9 Wait 20 minutes before removing Verro from the pool to allow the motors to cool. Shut off and unplug the Power Supply every time you remove the cleaner from the water. Always remember to turn the Power Supply OFF and unplug it from the power outlet before removing the cleaner from the pool.
- 10 Unplug the Power Supply from the GFCI outlet. Never leave the Power Supply plugged in when Verro is not in use.
- 11 Unplug the floating power cord from the Power Supply.



- 12 Use the floating power cord to pull Verro to the edge of the pool, and then use the handle to lift Verro out of the water. Water will drain from Verro as it is lifted.



See Owner's Manual  
for detailed product  
instructions.

Visit  
[www.irobot.com/usetips](http://www.irobot.com/usetips)  
for instructional photos

## Free Manuals Download Website

<http://myh66.com>

<http://usermanuals.us>

<http://www.somanuals.com>

<http://www.4manuals.cc>

<http://www.manual-lib.com>

<http://www.404manual.com>

<http://www.luxmanual.com>

<http://aubethermostatmanual.com>

Golf course search by state

<http://golfingnear.com>

Email search by domain

<http://emailbydomain.com>

Auto manuals search

<http://auto.somanuals.com>

TV manuals search

<http://tv.somanuals.com>