

Stealthbox®

INSTALLATION GUIDE for the

SB-T-TUNCNSL2/10W3v2

('03-Up Toyota Tundra Access & Double Cab
with front bucket seats and center console)



This Stealthbox is a product which requires professional installation skills and tools.

Please read this installation guide thoroughly before beginning the project. It will guide you step by step through the installation. Several of the steps in this process may require two people to accomplish.

It is absolutely vital that the enclosure be properly mounted to the vehicle according to these instructions. Failure to mount the enclosure properly presents two problems: 1) The sub-bass performance will suffer due to the movement of the enclosure caused by the force exerted by the woofer(s) and 2) A loose enclosure presents a serious safety hazard in the event of a collision or sudden deceleration.

Please enjoy your JL Audio Stealthbox responsibly.

JL AUDIO®

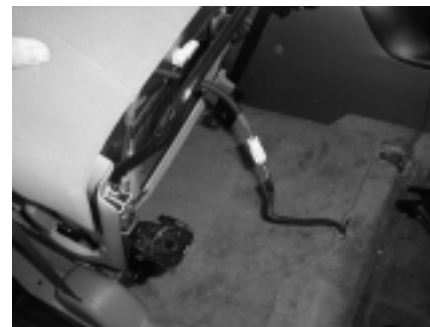
Ahead of the Curve™

www.jlaudio.com

START
HERE



STEP 1: Using a 14mm socket, remove the four bolts that secure the passenger side front seat.



STEP 2: Tilt the seat to the rear, unplug the exposed wire assembly, remove the seat from the truck.



STEP 3: Remove the front storage access door. Using a 10mm socket, remove the exposed bolts.



STEP 4: With the main storage door open, grab a hold of the black cup holder section and pull up.



STEP 5: Using a 10mm socket, remove the exposed bolts. Also remove the bolts that are located at the bottom of the main storage bucket.



STEP 6: Remove the plastic buttons that are located on each side of the center console.

Continued on Next Page →

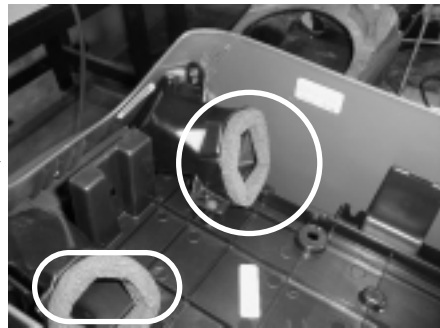
Cont. From Previous Page



STEP 7: Slide the center console to the rear of truck. This will allow exposure of the 12v plug wires. Unplug and then remove the center console from truck.

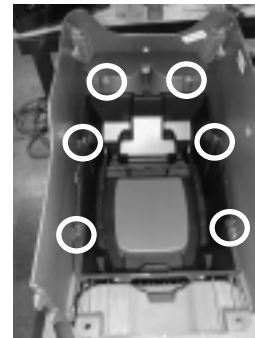
Tundra Access Cab Only

Keep the air ducts inside the truck, for now.

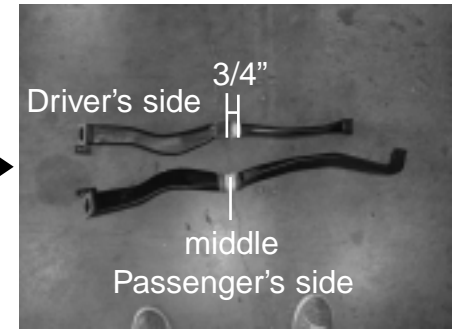


STEP 8: *Tundra Access Cab Only*

With the center console out of the truck, flip up side down. Remove the two air duct ears that are located to the rear of the center console.



STEP 9: Remove the 8 screws that are securing the black plastic support to the outer console. Not all circles represent all 8 screws. There are a pair of screws on each side of the console that need to be removed.

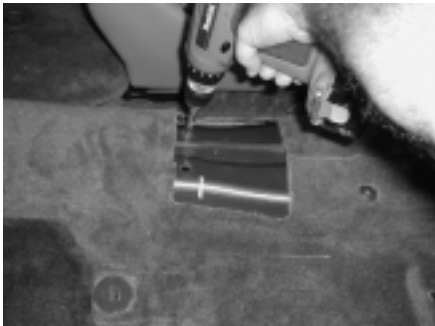


STEP 10: *Tundra Access Cab Only*

Now it is time to remove those air ducts from **STEP 7**. With the ducts removed, you will need to cut both ducts. Place the ducts so the front of the ducts are facing to the right.

Driver's side: Measure and mark 3/4" from front of foam tape, back. Cut at location.

Passenger's side: Cut at the middle of the foam tape.



STEP 11: Back inside the truck. Remove the black bracket that is mounted to the floor of the truck (not pictured).

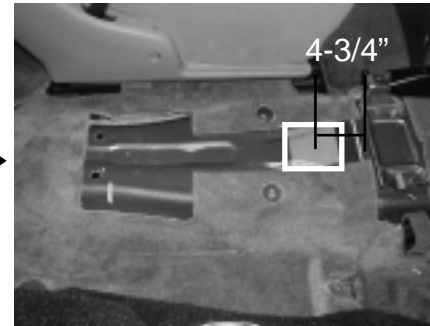
Tundra Access Cab Only

Using a 1/2" drill bit and drill. Enlarging the mounting holes from the bracket.



Tundra Access Cab Only

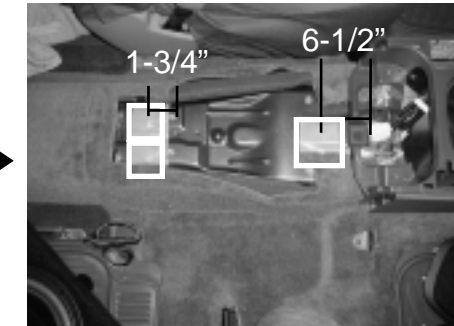
STEP 12: Cut 1-1/2" off of each carpet flap, that is located in front of the mounting holes, from **STEP 10**.



Tundra Access Cab Only

STEP 13(a): Place only one of the supplied wax squares into this location.

Place the middle of the supplied wax square, 4-3/4" back from the front console's metal mounting bracket.



Tundra Double Cab Only

STEP 13(b)

FRONT WAX SQUARE

Place the middle of one of the supplied wax squares, 4-3/4" back from the front console's metal mounting bracket.

REAR WAX SQUARES

Place the middle of the remaining pair of supplied wax squares, 1-3/4" back from the center console rear mounting holes.

Cont.
From
Previous
Page



STEP 14: Thread in the three supplied socket cup set screws into the Stealthbox. Make sure that the socket ends are on the outside of the Stealthbox.

The rear (left side of pic) threaded rods need to protrude about 1 1/4" out of the Stealthbox. The front socket cup set screw needs to protrude about 3/4".

Place the Stealthbox into location. Slide the rear socket cup set screw through the drilled out holes from **STEP 10**. Press firmly on the front of the Stealthbox, marking the wax square.



STEP 16(a): *Tundra Access Cab Only*

Remove the Stealthbox. You should have an impression on the wax square.

CAUTION

Before drilling, make sure that you are not going to be drilling into any gas lines, brake lines, transmission lines, electrical wiring, transfer case (4x4 vehicles) or anything else that might cause a reduction in your weekly pay. Always wear eye protection when drilling.

With the use of a 1/2" drill bit and drill. Drill out the floor at the impression on the wax square



STEP 15: Place the Stealthbox into position, Press down firmly.



STEP 16(b): *Tundra Double Cab Only*

Remove the Stealthbox. You should have an impression on the wax square.

CAUTION

Before drilling, make sure that you are not going to be drilling into any gas lines, brake lines, transmission lines, electrical wiring, transfer case (4x4 vehicles) or anything else that might cause a reduction in your weekly pay. Always wear eye protection when drilling.

With the use of a 1/2" drill bit and drill. Drill out the floor at the impression on the wax square

Cont. From Previous Page



STEP 17: Remove the wax square and run speaker wire.



STEP 18: *Access Cabs Only*

Replace the modified A/C ducts from **STEP 10**, back into the vehicle.

(Stealthbox is only shown in the picture for position purposes. You do not have to have the Stealthbox in location to accomplish this step)



STEP 19: With the Stealthbox and the modified A/C ducts in position. Place the front section of the center console back into the proper location. Do not secure at this time.

Remember to plug in the 12v sockets.

(Stealthbox is only shown in the picture for position purposes. You do not have to have the Stealthbox in location to accomplish this step)



STEP 20: Place the Stealthbox into the center console, outside of vehicle .

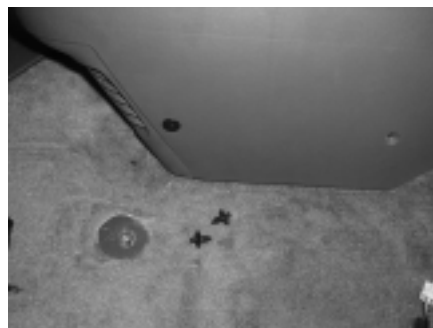
Double Cabs Only

The permanent removal of the rear seat 12v plug is needed.



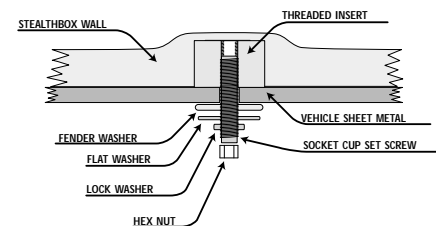
STEP 21: Place the Stealthbox/center console into vehicle. Attach the speaker wire to terminal.

Back out the three socket cup screws to 1-1/4".



STEP 22: Place Stealthbox/center console upright and into the proper position. Carefully guiding the threaded rods through the three drilled holes.

Pop in the four supplied black plastic push rivets, into the screw holes on each side of the center console.



STEP 23: Apply a supplied flat washer, lock washer and nut onto the three socket sup set screw. Tightly secure all three nuts .

Cont. From Previous Page



STEP 24: With the Stealthbox securely mounted to the vehicle. Secure the plastic console to the floor, using the factory screws from **STEP 5**.



STEP 25: Secure the front section of console with the factory screws, from **STEP 3**.

Once both portions of the center console have been secured. Snap in the cup holders from **STEP 4**, front console storage door from **STEP 3** and the plastic buttons from **STEP 6**.



**CONGRATULATIONS!
INSTALL COMPLETE.**

Included Hardware:

- 3) Wax Squares
- 3) 3/8" - 1-1/4" Fender Washer
- 3) 3/8" Flat Washer
- 3) 3/8" Split Lock Washer
- 3) 3/8" -16x2-1/4" Socket Cup Set Screw
- 3) 3/8" -16 Hex Nut

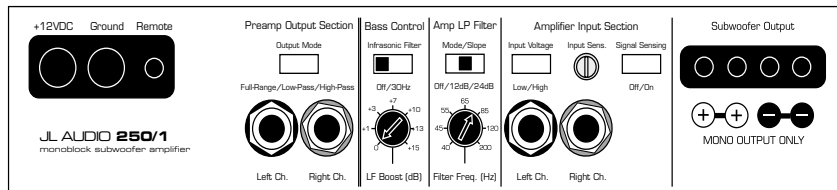
Difficulty Of Installation:



Specifications:

- Enclosure Type:** Sealed
- Driver Type:** 10W3v2-D2
- Nominal Impedance:** 4Ω
- Cont. Power Handling:** 300Watts

JL Audio recommends using a high quality amplifier such as the JL Audio 250/1. The diagram below shows the recommended crossover, infrasonic filter and equalizer settings for the 250/1 when being used to power your Stealthbox®.



The JL Audio 250/1 is a very versatile audio component. Please consult the owner's manual for detailed information about installing and tuning this amplifier.

Mid/High Frequency Driver Information:

Front Location Driver Size:
6.5"

Applicable JL Audio Products:
TR,VR, XR, ZR 650-CSi
mounting plates are needed



Rear Location Driver Size:
6.5"

Applicable JL Audio Products:
TR,VR,XR 650-CXi
mounting plates are needed



Free Manuals Download Website

<http://myh66.com>

<http://usermanuals.us>

<http://www.somanuals.com>

<http://www.4manuals.cc>

<http://www.manual-lib.com>

<http://www.404manual.com>

<http://www.luxmanual.com>

<http://aubethermostatmanual.com>

Golf course search by state

<http://golfingnear.com>

Email search by domain

<http://emailbydomain.com>

Auto manuals search

<http://auto.somanuals.com>

TV manuals search

<http://tv.somanuals.com>