

Stealthbox®

INSTALLATION GUIDE for the SB-B-5SER/12W6v2 2004 - Up 5 Series



Thank you for choosing a JL Audio Stealthbox® for your automotive sound system. With proper installation, your new vehicle-specific enclosed subwoofer system will deliver years of listening pleasure.

We strongly recommend that you have your new Stealthbox® installed by your authorized JL Audio dealer. The installation professionals employed by your dealer have the necessary tools and experience to disassemble and reassemble your vehicle properly. Also, keep in mind that your warranty coverage extends to 2 years if your system is installed or approved by your authorized JL Audio dealer. If you prefer to perform your own installation, please read this installation guide completely before beginning the process.

JL AUDIO®
Ahead of the Curve™

! IMPORTANT

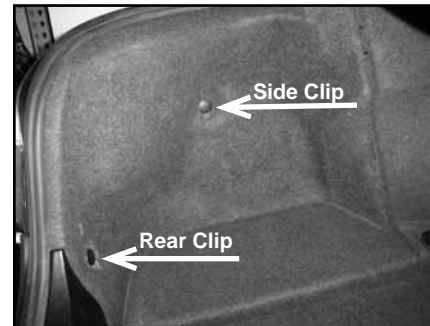
If you choose to perform the installation yourself, it is absolutely vital that the Stealthbox® be properly mounted to the vehicle according to these instructions. Failure to mount the enclosure properly presents two problems:

- 1) The sub-bass performance will suffer due to the movement of the enclosure caused by the force exerted by the woofer(s).
- 2) A loose enclosure presents a serious safety hazard in the event of a collision or sudden deceleration.

INSTALLATION DIFFICULTY:

1 OUT
OF
5

**ESTIMATED TIME:
1 HOUR**



STEP 1

Remove all contents from the trunk.

Remove the two plastic clips from the driver's side of the trunk, that are indicated by the arrows in the picture.

Remove this side panel from the trunk.



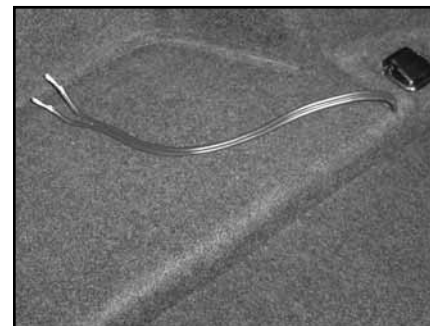
STEP 2

Place the supplied weld nut into the same mounting hole as the side position factory clip that was removed in **STEP 1**.

Mark the three holes from the flange of the weld nut onto the factory metal pane. Remove the weld nut.

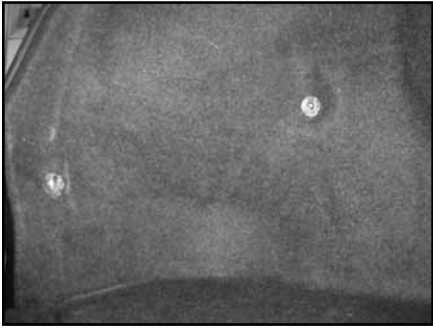
With a 1/8-inch drill bit and drill. Drill out the metal panel at the marked locations. You are close the outside sheet metal, use care when drilling through the metal.

Secure the threaded insert with the three supplied rivets.

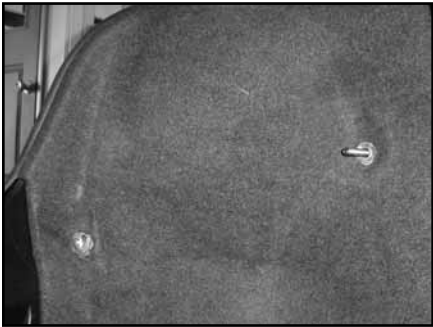


STEP 3

Run speaker wire from the amplifier location to the Stealthbox® location.

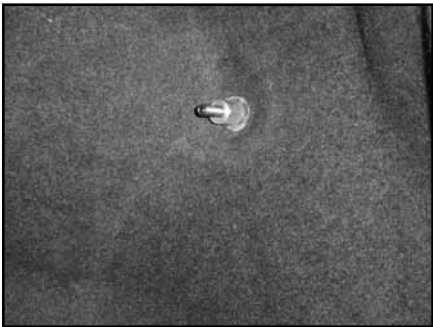
**STEP 4**

Place the side panel back into the trunk.

**STEP 5**

Place the rear factory clip back into place.

Thread the supplied set screw stud into the weld nut, leave 1 1/2-inch exposed.

**STEP 6**

Place the supplied spacer onto the set screw stud.

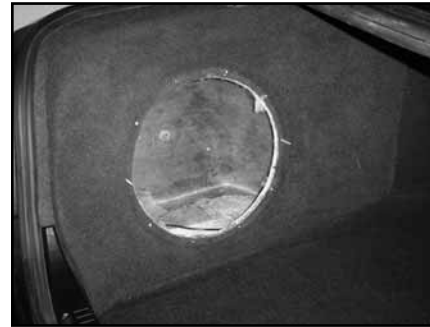
**STEP 7**

Remove the 9 o'clock and 3 o'clock position mounting screws from the woofer. Replace these mounting screws with the supplied threaded rods.

Remove all the mounting screws, woofer and fill from the Stealthbox®.

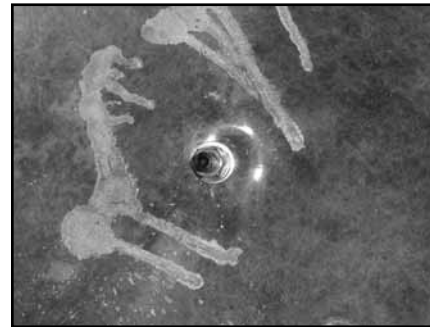
**STEP 8**

Attach the speaker wire to the terminal on the Stealthbox®.

**STEP 9**

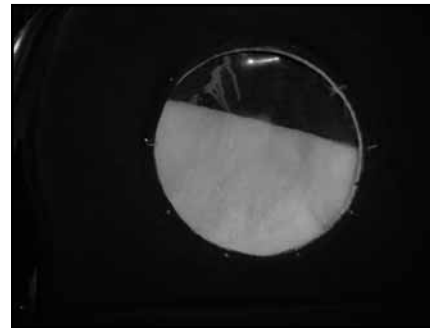
Position the Stealthbox into position.

Carefully guide the threaded stud through the hole on the back side of the Stealthbox®.

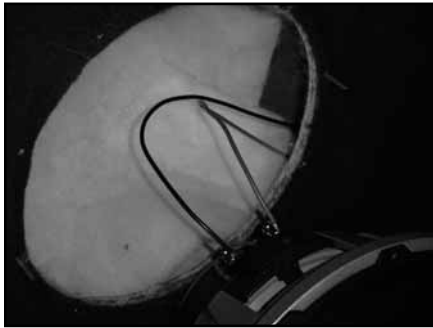
**STEP 10**

From inside the Stealthbox®, place the supplied washer, lock wash and then nut onto the set screw stud.

Using a 9/16-inch deep socket, secure tightly. Do not over tighten.

**STEP 11**

Place the fill back into the Stealthbox®.



STEP 20
Attach the proper speaker wires to the woofer's terminal.



STEP 21
Using the threaded rods as guide, place the woofer back onto the Stealthbox® and mount.



STEP 22
Remove the two threaded rods, a pair of pliers help with this removal.

Finish securing the woofer with the last two mounting screws.



CONGRATULATIONS
You have completed the installation for this model!

Please refer to the Power Recommendation section for an amplifier recommendation and basic set-up help.

INCLUDED HARDWARE

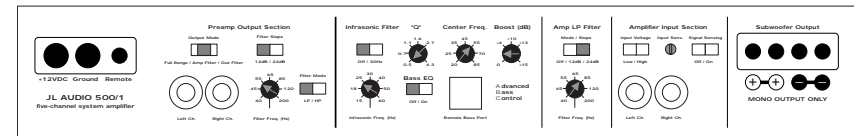
- (1) 7/8-inch(L) x 3/4-inch(OD) x 3/8-inch(ID) Spacer
- (1) 3/8-inch -16 x 5/8-inch Weld Nut
- (1) 3/8-inch Spilt Lock Washer
- (1) 3/8-inch Flat Washer
- (1) 3/8-inch -16 x 3" Set Screw Stud
- (1) 3/8-inch -16 Hex Nut
- (3) Button Head Rivet

SPECIFICATIONS

Enclosure Type: Acoustic Suspension (sealed)
Driver Type: 12W6v2-D4
Nominal Impedance: 2 ohms mono
Continuous Power Handling: 400 Watts

POWER RECOMMENDATION

JL Audio recommends using a high quality amplifier such as the JL Audio 500/1v2. The diagram below shows the recommended crossover, infrasonic filter and equalizer settings for the 500/1v2 when being used to power your Stealthbox®.



The JL Audio 250/1 is a very versatile audio component. Please consult the owner's manual for even more detailed information about installing and tuning this amplifier.

MID/HIGH FREQUENCY DRIVER FITMENT

A variety of JL Audio coaxial and component systems will fit in the factory speaker locations of your vehicle.

Front Speaker Size / Location: 4.0-inch / Front Doors
Fits JL Audio Models: TR400-CXi

Rear Speaker Size / Location: 4.0-inch / Rear Door
Fits JL Audio Models: TR400-CXi

JL AUDIO®
Ahead of the Curve™



(954) 443-1100

www.jlaudio.com

All specifications are subject to change without notice. "JL Audio" and the JL Audio logo, "Stealthbox" and the Stealthbox logo are registered trademarks of JL Audio, Inc. "Ahead of the Curve" and its respective logo is a trademark of JL Audio, Inc.
JL-SKU#011233 -05-01-2007 • Printed in USA • ©2007 JL Audio, Inc. • U.S. PATENTS: #5,734,734 #5,949,898 #6,118,884 #6,229,902 #6,243,479 #6,294,959 #6,501,844 #6,496,590 #6,441,685 #5,687,247 #6,219,431 #6,625,292 #D472,891 #D480,709 Other U.S. & Foreign patents pending. For more detailed information please visit us online at www.jlaudio.com.



Free Manuals Download Website

<http://myh66.com>

<http://usermanuals.us>

<http://www.somanuals.com>

<http://www.4manuals.cc>

<http://www.manual-lib.com>

<http://www.404manual.com>

<http://www.luxmanual.com>

<http://aubethermostatmanual.com>

Golf course search by state

<http://golfingnear.com>

Email search by domain

<http://emailbydomain.com>

Auto manuals search

<http://auto.somanuals.com>

TV manuals search

<http://tv.somanuals.com>