

Stealthbox®

INSTALLATION GUIDE
for the
SB-D-CLGR/12W3V3
SKU#94453
2009+



Thank you for choosing a JL Audio Stealthbox® for your automotive sound system. With proper installation, your new vehicle-specific enclosed subwoofer system will deliver years of listening pleasure.

We strongly recommend that you have your new Stealthbox® installed by your authorized JL Audio dealer. The installation professionals employed by your dealer have the necessary tools and experience to disassemble and reassemble your vehicle properly. Also, keep in mind that your warranty coverage extends to 2 years if your system is installed or approved by your authorized JL Audio dealer. If you prefer to perform your own installation, please read this installation guide completely before beginning the process.

JL AUDIO®
Ahead of the Curve™

! IMPORTANT

If you choose to perform the installation yourself, it is absolutely vital that the Stealthbox® be properly mounted to the vehicle according to these instructions. Failure to mount the enclosure properly presents two problems:

- 1) The sub-bass performance will suffer due to the movement of the enclosure caused by the force exerted by the woofer(s).
- 2) A loose enclosure presents a serious safety hazard in the event of a collision or sudden deceleration.

INSTALLATION DIFFICULTY:

2 OUT OF **5**

ESTIMATED TIME:
1 HOUR



STEP 1

Clean the trunk out so that you have a good environment to work in.



STEP 2

Place the 3" x 3" wax square as shown.



STEP 3

Thread the included 3/8-16 x 2 1/4" Allen Head Set Screw into the enclosure with the Allen socket facing out and approximately 1/4" exposed as shown.

Set the enclosure in place, press on the enclosure so that the exposed Allen Head Set Screw marks the 3" x 3" Wax Square.

**STEP 4**

Drill a 1/2" hole through the impression made in the 3" x 3" Wax Square in towards the rear wheel.

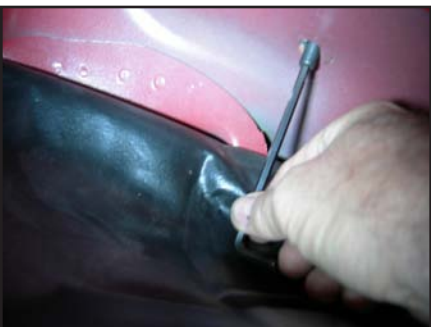
CAUTION

Before drilling, always make sure that you are not going to be drilling into any gas lines, brake lines, tires, transmission lines, electrical wiring, exhaust systems or anything else that might cause a reduction in your weekly pay. Always wear eye protection when drilling.

**STEP 5**

Pull down the rear fender liner so that you have access to the hole drilled in **STEP 4**.

Place the Stealthbox® into place making sure that the speaker wire is properly attached to the enclosure and, that the 3/8-16 x 2 1/4" Allen Head Set Screw comes through the hole Drilled in **STEP 4**.

**STEP 6**

Using an Allen Wrench, back the 3/8-16 x 2 1/4" Allen Head Set Screw out of the Stealthbox® as shown, far enough so that the 3/8 x 1 1/4" Fender Washer, 3/8" Split Lock Washer and, 3/8-16 Hex Nut can be installed as shown in the DETAIL below. You may want to hold the Allen Head Set Screw using the Allen Wrench while tightening this hardware.

**DETAIL**

The hardware discussed in **STEP 6** is detailed here. Re-install the inner fender liner removed in **STEP 5**, put all of the stuff you took out of the trunk in **STEP 1** back in.

CONGRATULATIONS!

You have completed the installation for this model!

Enjoy your new Stealthbox®!

Please refer to the Power Recommendation section for an amplifier recommendation and basic set-up help.

INCLUDED HARDWARE

- | | |
|---|---------------------------|
| 1) 3/8-16 x 2 1/4" Allen Head Set Screw | 1) 3/8" Split Lock Washer |
| 1) 3/8" x 1 1/4" Fender Washer | 1) 3/8-16 Hex Nut |
| 1) 3" x 3" Wax Square | |

SPECIFICATIONS

Enclosure Type: Acoustic Suspension (sealed)

Driver Type: 12W3v3-4

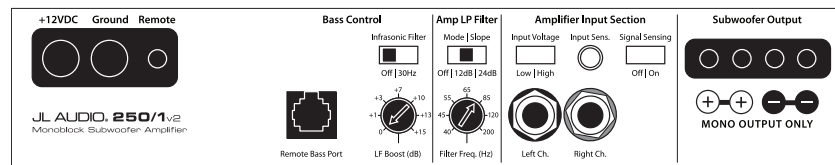
Nominal Impedance: 40ohms

Continuous Power Handling: 500 Watts

POWER RECOMMENDATION

JL Audio recommends using a high quality amplifier such as the JL Audio 250/1v2.

The diagram below shows the recommended crossover, infrasonic filter and equalizer settings for the 250/1v2 when being used to power your Stealthbox®.



The JL Audio 250/1v2 is a very versatile audio component. Please consult the owner's manual for even more detailed information about installing and tuning this amplifier.

MID/HIGH FREQUENCY DRIVER FITMENT

A variety of JL Audio coaxial and component systems will fit in the factory speaker locations of your vehicle.

Front Speaker Size / Location: 3 1/2"- Dash / 6"x 9"- Front Doors

Fits JL Audio Models: TR350-Dash / TR690TXi-Doors

Rear Speaker Size / Location: 6 1/2"- Rear Deck

Fits JL Audio Models: TR650CXi, TR650CSi, C2-650x, C2-650, C5-650x, C5-650, ZR650CSi



JL AUDIO®

Ahead of the Curve™

(954) 443-1100

www.jlaudio.com

All specifications are subject to change without notice. "JL Audio" and the JL Audio logo, "Stealthbox" and the Stealthbox logo are registered trademarks of JL Audio, Inc. "Ahead of the Curve" and its respective logo is a trademark of JL Audio, Inc.
JLA-SKU# 011294 06-16-2009 • Printed in USA • ©2008 JL Audio, Inc. • U.S. PATENTS: #5,734,734 #5,949,898 #6,118,884 #6,229,902 #6,243,479 #6,294,959 #6,501,844 #6,496,590 #6,441,685 #5,687,247 #6,219,431 #6,625,292 #D472,891 #D480,709 Other U.S. & Foreign patents pending.
For more detailed information please visit us online at www.jlaudio.com.



Free Manuals Download Website

<http://myh66.com>

<http://usermanuals.us>

<http://www.somanuals.com>

<http://www.4manuals.cc>

<http://www.manual-lib.com>

<http://www.404manual.com>

<http://www.luxmanual.com>

<http://aubethermostatmanual.com>

Golf course search by state

<http://golfingnear.com>

Email search by domain

<http://emailbydomain.com>

Auto manuals search

<http://auto.somanuals.com>

TV manuals search

<http://tv.somanuals.com>