

# MANUAL MP-X

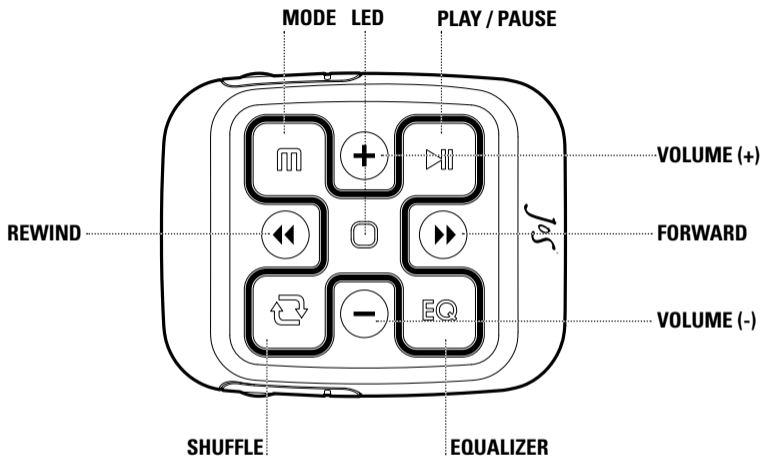
VERSION 1.2

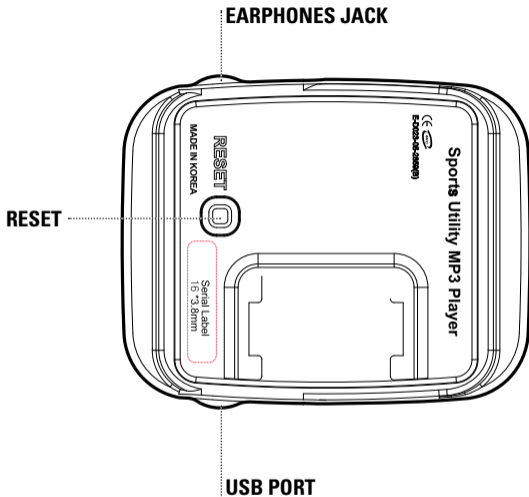
*Jens  
ofsweden*

**English**








# Table of Contents

<b>BUTTONS AND CONNECTIONS .....</b>	<b>24</b>	Rewind / Fast-Forward .....	35
Buttons Key .....	26	Shuffle On / Off .....	35
LED Blink Key .....	27	Navigation Mode Setup .....	35
<b>BASIC OPERATIONS .....</b>	<b>28</b>	Navigation Mode - All (Default) .....	35
Connect the Player to a Computer .....	28	Navigation Mode - Folder .....	36
File Management Using a Removable Disk .....	29	LED On / Off .....	36
Format .....	30	Equalizer .....	36
Disconnecting the Player From a Computer .....	31	Volume Control .....	36
Firmware Upgrade .....	32	Charging the Battery .....	36
<b>PRODUCT SPECIFICATIONS .....</b>	<b>33</b>	<b>MISCELLANEOUS .....</b>	<b>37</b>
Product Features .....	34	General Cautions .....	37
<b>USING THE PLAYER .....</b>	<b>35</b>	Earphone-related Cautions .....	38
MP3 Play / Pause .....	35	Troubleshooting .....	39
Move to the Next / Previous File .....	35	<b>LIMITED CONSUMER GUARANTEE .....</b>	<b>40</b>





## BUTTON KEY

	Button Name	Short Press	Long Press
	Play / Pause	Play / Pause	On / Off
	EQ	Change EQ	Change to normal EQ
	Shuffle	On (Play Random)	Off (Play In Order)
	Volume +	Increase the volume	Increase the volume continuously
	Volume -	Decrease the volume	Decrease the volume continuously
	REW	Skip to previous track	Rewind
	FF	Skip to next track	Fast forward

**LED BLINK KEY**

MP3 Mode	RED & BLUE LED blink alternately
Transmitting Data	BLUE LED blinks continuously
Low Battery	Step 1 : Red LED blinks regardless if LED is ON or OFF Step 2 : Red LED ON, the device does not function. Step 3 : Power Off * Recharging required for Step 1 and after.
Play -> Pause	Red & Blue LED Off
Pause -> Play	Red & Blue LED blink alternately
Format	The LED's are turned on and then only the blue LED flashes quickly.

## CONNECT THE PLAYER TO A COMPUTER

- 1) Turn on the player. Connect the USB port on the player to the USB port on the computer using the provided cable.
- 2) After the message "Found New Hardware" the necessary USB drive is installed.

\*The installation screen may not be visible.

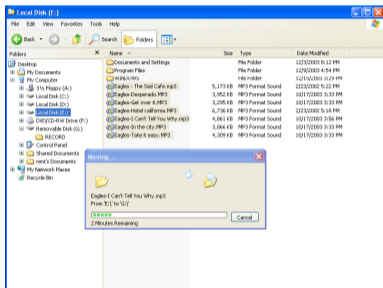


**NOTE!** Connecting the product to your PC while playing or while another operation is in progress may cause the product to malfunction. Please make sure that all operations in progress are stopped before connecting.



## FILE MANAGEMENT USING A REMOVABLE DISK

- 1) After connecting the player to your PC, run Windows Explorer.
- 2) After selecting a file or a folder to save, drag & drop the selected file or folder to the desired folder in the removable disk drive.



**NOTE!** After selecting a file or a folder to save, drag & drop the selected file or folder to the desired folder in the removable disk drive.

**NOTE!** Do not remove the USB cable while files are being moved. It may cause the product to malfunction.

## FORMATERING

If there is a problem recognizing USB, or the product malfunctions, try to reset it (this is done by pressing the Reset-button on the back of the player). If the problem is not solved, you may format it to stabilize the player.

1) It is possible to format in Windows Explorer.

2) Formatting on the Player

At power off, press the <REW> button + <EQ> button + < Play / Pause> button simultaneously. The LEDs will be turned on and then only the blue LED will flash quickly, indicating that formatting is in progress.

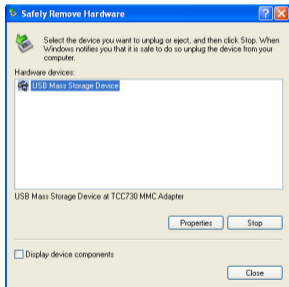
**NOTE!** Once formatting is done, all the data in the removable disk is deleted. Please make sure to back up all important data before formatting.

## DISCONNECTING THE PRODUCT FROM THE COMPUTER

1. Double-click the “Safely Remove Hardware” icon in the system tray at the lower right corner of the PC screen.



2. Select a USB device and click the <Stop> button.



When the message “Safely Remove Hardware?” is displayed, click the <OK> button and then unplug the USB cable from the product.

**NOTE!** In Windows 98 systems, the above icon is not available in the system tray.

## FIRMWARE UPGRADE

Firmware upgrade is needed to keep the product up-to-date.

1. Download the latest YUF file from our web page.
2. Connect the product to your PC.
3. Copy the downloaded YUF file to the root directory of the product.
4. After removing the product safely from your PC, turn the product on again.
5. Firmware upgrade begins to progress as the player boots.

**NOTE!** Since the player needs to be powered on for firmware upgrading, please be sure to have it fully charged before starting the firmware upgrade.

**NOTE!** Do not turn off the device while processing the firmware upgrade, it may cause the player to malfunction.

## PRODUCT SPECIFICATIONS

Classification	Option	Specification
File	MP3	MPEG1, 2, 2.5 Layer3(8~320Kbps, VBR)
File	WMA	Version 9 (32~192Kbps)
File	ASF	Audio ASF - OK
File	OGG	Ogg Vorbis (Q1~Q10)
File	MS DRM	PD-DRM 9.0
Interface	USB version	USB 2.0 (High Speed : 25 Mbps, transmission speed : 480Mbps), mass storage
Interface	Supported OS	Windows 98 SE / ME / 2000 / XP and MAC 9.2
File System		FAT12, FAT16, FAT32
Audio post Processing	Equalizer	Normal, Rock, Jazz, Classic, Pop, Live

forts.

Output power	Music play	40mW=20mW(R)+20mW(L)
S/N ratio	Music play	Over 85dB
Frequency Range	Music play	20 Hz ~ 20 KHz
Distortion		Under 0.1 %
Battery		Li-polymer ( Under 350mAH )

## PRODUCT FEATURES

FEATHERLIGHT: **28G**

DESIGNED FOR OUTDOOR SPORTS, TOUGH, WATER RESISTANCE TO RAIN, SWEAT ETC. NOTE! NOT WATER PROOF

USB **2.0** HISPEED

SUPPORT MP**3**, WMA, ASF OGG

SHUFFLE - RANDOM PLAY

RESUME - STARTS WHERE YOU WERE LAST LISTENING.

VARIOUS EQ TONE PRESETS SUCH AS NORMAL, ROCK, JAZZ, CLASSIC, POP, LIVE

USER FRIENDLY INTERFACE

BUILT-IN LITHIUM POLYMER BATTERY

PPGRADEABLE FIRMWARE

USB **2.0** - USE AS A REMOVABLE DISK

Download from [Www.Somanuals.com](http://Www.Somanuals.com). All Manuals Search And Download.

## USING THE PLAYER

### 1. MP3 PLAY / PAUSE

Press the Play / Pause button briefly to toggle between Play and Pause.

### 2. MOVE TO THE NEXT / PREVIOUS FILE

Press the REW / FF button to move to the next / Previous track.

### 3. REWIND / FAST-FORWARD

Press and hold the REW button to rewind while playing.

Press and hold the FF button to fast-forward while playing.

### 4. SHUFFLE ON / OFF

Press the Shuffle-button briefly to turn Shuffle on, the songs will then play in random order. Press and hold Shuffle button to turn Shuffle off, the songs will then play in regular order.

### 5. NAVIGATION MODE SETUP (REQUIRES FIRMWARE 1.09 OR LATER)

There are two different navigation modes to choose from, "All" and "Folder". To switch between the two different modes press and hold the Shuffle-button until you hear one or two beeps.

One beep confirms that the mode "All" is active. Two beeps confirms that the mode "Folder" is active.

#### 5A. NAVIGATION MODE - ALL (DEFAULT)

This mode ignores the players folder structure and acts as if all files on the player is located in the same folder.

### 5B. NAVIGATION MODE - FOLDER

when this mode is active you will navigate in one folder at a time until you switch folder. (See instructions below). This mode only works when Shuffle is turned off. If to Shuffle is turned on the Navigation Mode will automatically switch to "All".

Switch folder by pressing the buttons stated below until two beeps confirms your choice.

Switch to top folder: EQ och Volym +

Switch to bottom folder: EQ och Volym -

Switch to next folder: EQ och FW (>>)

Switch to previous folder: EQ och RW (<<)

### 6. LED ON / OFF

Press and hold the <Mode Change> button to change the LED On / Off status.

### 7. EQUALIZER

Select EQ settings, such as Normal, Rock, Jazz, Classic, Pop, Live. Press the EQ button to toggle between settings. Press and hold the EQ button to reset to Normal EQ.

### 8. VOLUME CONTROL

Press either of the volume buttons briefly to increase/decrease the volume level.

**NOTE!** If the power is turned off with the volume level set above the optimal level (Level 20) and the power is turned on again, the volume level will automatically be adjusted to the optimal level (Level 20) for the user's safety.

### 9. CHARGING THE BATTERY

You charge the battery by connecting the player to your computers USB port using the USB cable. Once

Download from [www.Somanuals.com](http://www.Somanuals.com). All Manuals Search And Download.



the player is connected to the computer the battery will automatically start charging. The battery will be charged as long as it's connected to the computer. You can also charge the battery using a USB Charger which is available for purchase as an accessory at [www.jensofsweden.com](http://www.jensofsweden.com).

While the battery is being charged the red LED is ON. When the battery is fully charged the blue LED is ON. Charging the battery takes approx. 3 hours.

### GENERAL CAUTIONS

The following content is provided to protect the user's safety and prevent property damage. Please read it thoroughly for correct use of the product.

- 1) Do not store the product where the temperature is too high (over 35 degrees celsius) or too low (below -5 degrees celsius).
- 2) Do not drop the product, subject it to impact or place it near a magnet. (e.g. Hifi Speakers)
- 3) Avoid contact with chemicals such as benzene or thinner as they may cause deterioration of the product.
- 4) Do not attempt to disassemble, repair or modify the product.
- 5) Avoid dusty or dirty locations.
- 6) Do not immerse the product in water.
- 7) Exercise care when using a neck strap – Hooking other objects could cause injury.
- 8) Falling or bumping into another object while carrying the player in your pocket can cause a wound or a fracture.
- 9) For prolonged life of the product, do not store in humid conditions, or subject to intense direct heat such as a heater or radiator.

## EARPHONE-RELATED CAUTIONS

### TRAFFIC SAFETY

Do not use the earphones while riding a bike or driving a car or a motorcycle. It may cause a hazard by impairing your ability to hear what's going on around you, and is a violation of the law in certain areas. Even walking or using a pedestrian crossing while wearing the earphones and using the product at high volume can be dangerous.

### HEARING

To protect your hearing, do not use the earphones at high volume for an extended time.

Health professionals have indicated that it may be dangerous to be exposed to high levels of volume. If you experience ringing in your ears, please lower the volume level or stop using the earphones.



### REST YOUR EARS

Prolonged listening can high volume can cause serious damage to your ears, like tinnitus and impaired hearing. For questions regarding sound and hearing contact your local Association of Hard of Hearing People.

## TROUBLESHOOTING

### **Q. The product does not power on.**

A. The battery might be completely discharged. Connect the product to a USB port of your PC to see if the power comes on.

### **Q. The power goes off automatically.**

A. When paused, the unit will turn off automatically in 1 minute. Or if the battery is low, the device will power off automatically. Please check the battery.

### **Q. There is no sound output.**

A. Check if the volume level is set to "0"

### **Q. There is some noise during listening to the music by earphone.**

A, Check if the earphone jack has any foreign matter on it.

A. If any part of the MP3, WMA ,OGG, ASF file is damaged, it may result in sound distortion or noise. Try playing another music file to see if this is the cause of your problem.

### **Q. I can't download a file.**

A. Make sure that the USB cable has been properly connected.

Check if the OS of your PC is Windows 98. (For a Windows 98 system, you need to install a driver separately. The driver is available at [www.jensofsweden.com](http://www.jensofsweden.com))

### **Q While playing, the beep sound occurs 3 times, and go to the next song.**

A The file may be damaged or corrupted. Erase the file and check the source before reloading.

## LIMITED CONSUMER GUARANTEE

This limited guarantee applies to purchasers of products from JOS AB. If any party who resells this product after it has left the ownership of JOS AB issues any guarantee other than this one then the guarantee that was issued most recently will apply. JOS guarantees that the product is free from defects in materials, design and workmanship at the time of handover to the purchaser. The guarantee is only valid if the conditions specified below are fulfilled:

- 1) This guarantee is only valid for purchasers who are end customers and who can show a receipt or guarantee certificate giving details of the place and date of purchase and the serial number. This guarantee does not restrict the purchaser's statutory rights under law or the purchaser's rights with respect to the seller of the product.
- 2) This limited guarantee is valid for the main product for a period of 12 months from the date of handover of the product to the customer. In the case of accessories that are supplied with the product or acquired separately, such as earphones, cables, cases, wrist straps and other accessories, a guarantee against defects in materials, design and workmanship applies for 3 months from the date of handover to the purchaser. If the purchaser transfers ownership of the product to another person the new owner may make a claim under the terms of the guarantee within the same time period as the original purchaser on condition that the terms of section 1 are met.
- 3) If a defect in design, materials or workmanship is found, JOS AB undertakes to rectify the defect by repairing or replacing the product, whichever it deems appropriate. JOS AB hereby undertakes to supply the purchaser with a working product during the guarantee period. Parts that are replaced during repair shall become the property of JOS.

- 4) This guarantee does not cover deterioration of the product that may be regarded as being due to normal wear. Nor does the guarantee cover the following situations:
- a) any faults that are due to exposure of the product to moisture, liquids, extreme temperatures or variations in temperature, chemical products, excessive external force, software modification or force majeure and which are not directly caused by material defects, design defects or faulty workmanship,
  - b) if the customer does not inform JOS within 30 days of the discovery of the fault or within the guarantee period.
  - c) if the product cannot be identified, by examination of the serial number, as being identical with the product to which the guarantee applies.
  - d) if the product has been used in any way that conflicts with its intended purpose or has been connected to an accessory that JOS AB has advised that the product should not be used with.

When carrying out repairs on a defective product, JOS AB accepts no liability for information that has been stored in the memory of the product undergoing repair.

## **SUPPORT**

JOS AB offers 24 months free support through our website [www.jensofsweden.com](http://www.jensofsweden.com). There you also have the possibility to download the latest firmware read FAQ's and ask questions to our technical support. Only communication through the website and your control panel at [www.jensofsweden.com](http://www.jensofsweden.com) is included in this free support.



## Free Manuals Download Website

<http://myh66.com>

<http://usermanuals.us>

<http://www.somanuals.com>

<http://www.4manuals.cc>

<http://www.manual-lib.com>

<http://www.404manual.com>

<http://www.luxmanual.com>

<http://aubethermostatmanual.com>

Golf course search by state

<http://golfingnear.com>

Email search by domain

<http://emailbydomain.com>

Auto manuals search

<http://auto.somanuals.com>

TV manuals search

<http://tv.somanuals.com>