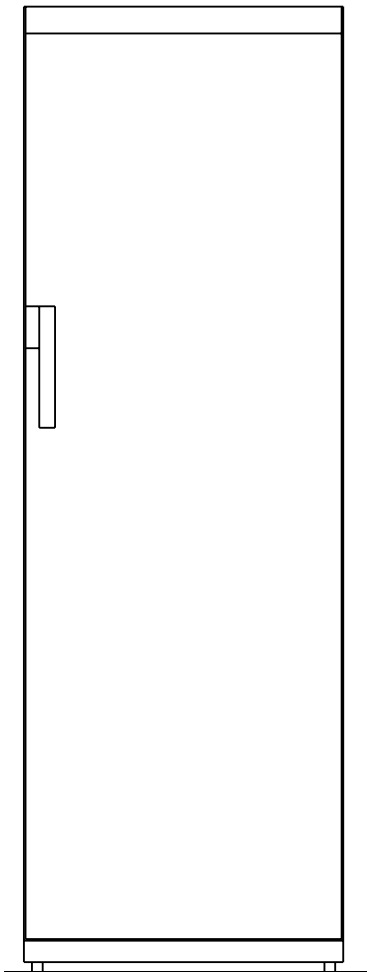


JLLFWI809 Refrigerator

Instruction manual



John Lewis



Important safety information

It is most important that this instruction book should be retained with the appliance for future reference. Should the appliance be sold or transferred to another owner, or should you move house and leave the appliance, always ensure that the book is supplied with the appliance in order that the new owner can get to know the functioning of the appliance and the relevant warnings.

These warnings have been provided in the interest of safety. You **MUST** read them carefully before use of installation by a qualified person. If you are unsure of the meanings of these warnings contact the John Lewis branch from which you purchased the appliance.

Installation

- Any electrical work required to install this appliance should be carried out by qualified and competent personnel to the relevant National Standards .
- This appliance is heavy. Care should be taken when moving it.
- Do not attempt to modify this product in any way.
- Care must be taken to ensure that the appliance does not stand on the electrical supply cable.
Important: if the supply cable is damaged, please contact our extended warranty administrators who will put you in touch with your local Service Force Repair Centre for further advice.
- The appliance should be left for 2 hours after installation before it is turned on, in order to allow the refrigerant to settle.
- Parts which heat up should not be exposed. Whenever possible, the back of the appliance should be close to a wall but leaving the required distance for ventilation as stated in the installation instructions.

Child safety

- This appliance is designed to be operated by adults.
- This appliance is not intended for use by persons (including children) with reduced physical, sensory or mental capabilities, or lack of experience and knowledge, unless they have been given supervision or instruction concerning use of the appliance by a person responsible for their safety. Children should be supervised to ensure that they do not play with the appliance.
- Keep all packaging away from children.

General safety

- This appliance contains hydrocarbons in its cooling unit; maintenance and recharging must therefore only be carried out by authorised technicians.
- Take utmost care when handling your appliance so as not to cause any damages to the cooling unit with consequent possible fluid leakages.

- The appliance must not be located close to cookers, radiators or boilers.
- Avoid prolonged exposure of the appliance to direct sunlight.
- Do not use other electrical appliances (such as ice cream makers) inside of refrigerating appliances.

Use

- This appliance is designed for domestic use only, specifically for the storage of edible foodstuffs.
- Frozen food must **NOT** be re-frozen once it has thawed out.
- Do not place carbonated or fizzy drinks in the freezer.
- Do not remove items from the freezer if your hands are damp/wet, as this could cause skin abrasions or frost/freezer burns.
- Ice lollies can cause 'frost/freezer burns' if consumed straight from the freezer.
- Manufacturers' storage recommendations should be strictly adhered to. Refer to relevant instructions.

Maintenance and cleaning


- Switch off and unplug the appliance before carrying out any cleaning or maintenance work.

Service

- This product should be serviced by an authorised engineer and only genuine spare parts should be used.



Environmental information

- After installation, please dispose of the packaging with due regard to safety and the environment.
- When disposing of an old appliance, make it unusable, by cutting off the cable. Remove any door catches, to prevent small children being trapped inside.
- The symbol  on the product or on its packaging indicates that this product may not be treated as household waste. Instead it should be taken to the appropriate collection point for the recycling of electrical and electronic equipment. By ensuring this product is disposed of correctly, you will help prevent potential negative consequences for the environment and human health, which could otherwise be caused by inappropriate waste handling of this product. For more detailed information about recycling of this product, please contact your local council, your household waste disposal service or the shop where you purchased the product.

Contents

For the User

Important Safety Information	2
Description of the appliance	5
Control panel	6
Display	6
When the Fridge is first installed	6
Temperature control	7
Functions menu	7
Ambient temperature function	7
Child lock function	7
Shopping function	7
Eco mode function	7
Quick chill function	7
Holiday function	8
Using the refrigerator	9
Fresh food refrigeration	9
Normal operating sounds	9
Quick chill shelf	9
Bottle and can holder	9
Dismantling of the Bottle and can holder	10
Installation of the carbon filter	10
Change of the carbon filter	10
Movable shelves	11
Positioning the door shelves	11
Bottle holder	11
Hints and Tips	12
Maintenance and Cleaning	13
Internal cleaning	13
When the appliance is not in use	13
External cleaning	13
Changing the light bulb	13
Defrosting	13
Something Not Working	14
Repairs - After Sales Service	15

For the Installer

Installation	16
Technical Specification	16
Electrical Connection	17
Positioning	18
Rear spacers	18
Shelf holders	19
Door Reversibility	19

Guide to use the instruction manual

The following symbols will be found in the text to guide you throughout the instructions:

 **Safety instructions**

 **Hints and tips**

 **Environmental information**

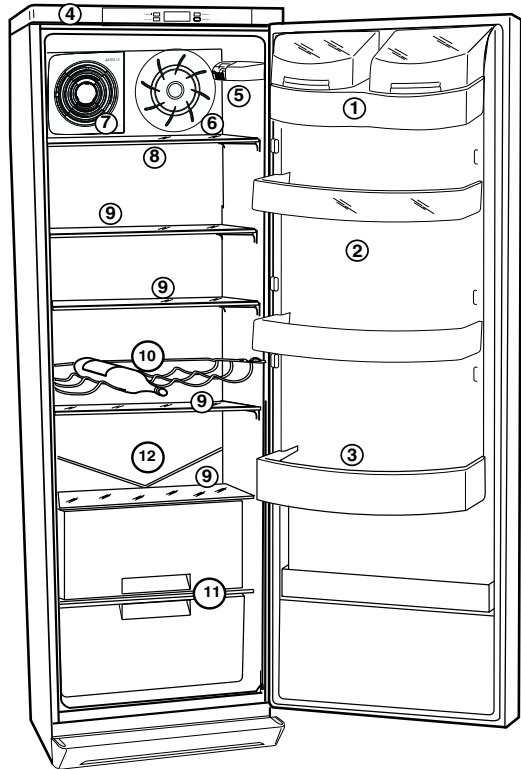


This appliance complies with the following **E.E.C. Directives:**

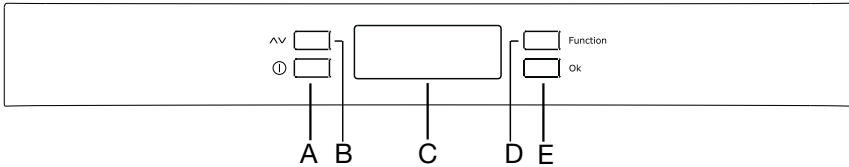
- * **73/23 - 90/683** (Low Voltage Directive);
- * **93/68** ("General Product Safety Directive");
- * **87/308** (Radio Interference Suppression);
- * **89/336** (Electromagnetic Compatibility Directive) and subsequent modifications.

Description of the appliance

- 1 Dairy compartments
- 2 Can storage shelves
- 3 Bottle storage shelf
- 4 Control panel
- 5 Light
- 6 Ventilator
- 7 Cold air exit
- 8 Bottle and can holder
- 9 Storage shelves
- 10 Bottle holder
- 11 Salad crispers
- 12 Water discharge hole



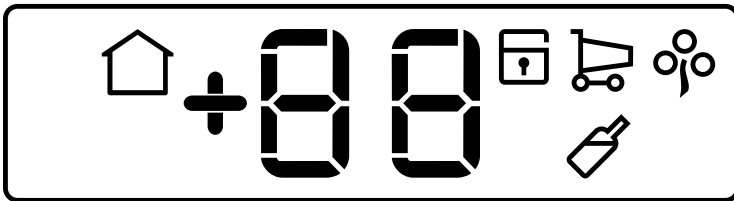
The control panel



- A - Appliance button ON/OFF
- B - Temperature regulation button
- C - Temperature and function indicator

- D - Function button
- E - Confirmation button

Display



- If on, the temperature indicated is the ambient temperature
- Positive Temperature indicator
- Temperature indicator

- If on, the Child Lock function is on
- If on, the Shopping function is on
- If on, the Eco Mode function is on
- If on, the Quick Chill function is on

When the refrigerator is first installed



Warning

Allow the appliance to stand for 2 hours after installation.

After inserting the plug into the power outlet, if the display is not illuminated, press key (A), to turn the appliance on.

For the correct storage of the food select the Eco Mode function that guarantee the following temperature is set:

+5°C in the fridge

- To select a different temperature see "Temperature regulation".



Important

If the door remains ajar for some minutes, the internal lighting will turn off electronically; after this, the lighting function will be reset by closing and opening the door itself.

The appliance is shut off by pressing key (A) for more than 1 second. During this, a countdown of the temperature from -3 -2 -1 will be shown.

Temperature regulation

The temperature may be regulated by pressing the key B.

By pressing the key B the current temperature setting flashes on the indicator.

To confirm the choice of temperature press the key E. You will hear the buzzer for a few seconds and the indicator displays the newly selected temperature for a few seconds then shows the interior temperature again.

The newly selected temperature will be reached after 24 hours.

The temperature will remain stored even if the appliance is not in use.



Attention!

Following first start up, the temperature displayed can not correspond to the set temperature. During this time it is possible that the temperature displayed is different from the actual temperature.

Functions menu

The functions menu is accessed by pressing the key D.

Each function can be confirmed by pressing button E. If there is no confirmation after a few seconds the display will go out from the menu and return to normal condition.

The following functions are indicated:

 Ambient temperature


 Child Lock function

 Shopping function

 Eco Mode function

 Quick Chill function

Ambient temperature function

The ambient temperature function is activated by pressing key D (several times if necessary) until the corresponding icon appears .


In this condition the displayed temperature is the ambient temperature.

You must confirm the choice by pressing key E within few seconds. You will hear the buzzer and the icon remains illuminated.

It is possible to de-activate the function at any time by pressing key D until the corresponding icon flashes and pressing key E.

Child lock function

The Child Lock function is activated by pressing key D (several times if necessary) until the

corresponding icon appears .


You must confirm the choice by pressing key E within a few seconds. You will hear the buzzer and the icon remains illuminated.

When the Child Lock function is activated, the programmed temperatures and settings remain, even if any of the keys are pressed.

It is possible to de-activate the function at any time by pressing key D until the corresponding icon flashes and then pressing key E.

Shopping function

If you need to insert a large amount of warm food, for example after doing the grocery shopping, we suggest activating the Shopping function to chill the products more rapidly and to avoid warming the other food which is already in the refrigerator.

The Shopping function is activated by pressing key D (several times if necessary) until the corresponding icon appears .


You must confirm the choice by pressing key E within few seconds. You will hear the buzzer and the icon remains illuminated.

The Shopping function shuts off automatically after approximately 6 hours.

It is possible to de-activate the function at any time by pressing key D until the corresponding icon flashes and then pressing key E.

Eco mode function

The Eco Mode function is activated by pressing key D (several times if necessary) until the

corresponding icon appears  (or setting the temperature at +5°C).

You must confirm the choice by pressing key E within few seconds. You will hear the buzzer and the icon remains illuminated.


In this condition the chosen temperatures are automatically set (+ 5°C), in the best conditions for storing food.

It is possible to de-activate the function at any time by changing the selected temperature in the compartment.

Quick chill function

The Quick Chill function is used for the rapid cooling of drinks.

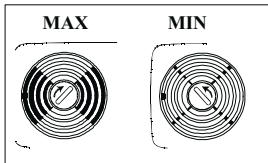
Put the drinks on the Quick Chill shelf and open the air lever to the maximum position.

The Quick Chill function is activated by pressing key D (several times if necessary) until the corresponding icon appears .

You must confirm the choice by pressing key E within few seconds. You will hear the buzzer and the icon remains illuminated.

The Quick Chill function shuts off automatically after approximately 6 hours.

When the cooling is finished de-activate the function by pressing key D until the corresponding icon flashes, then pressing key E and adjust the air lever to the minimum.



Holiday function “H”

The Holiday function sets the temperature at + 15°C.

This function allows you to keep the refrigerator shut and empty during a long holiday period (e. g. the summer holidays) without the formation of unpleasant smells.

The Holiday Function is activated by pressing the key B: the current temperature will flash on the display.

Press the key B again. You can confirm the choice of temperature when the letter H appears on the display or by pressing the key E, (you will hear the buzzer) or by waiting for a few seconds (you will not hear the buzzer).

The refrigerator is now in the Holiday function in the energy- saving mode and the display shows the letter H.

It is possible to de-activate the function at any time by changing the selected temperature in the compartment.



Attention!

The fridge compartment must be empty when the Holiday function is activated.

Using the refrigerator

The temperature of this compartment may be regulated between +2°C and +8°C.

During normal functioning the indicator shows the temperature inside the fridge.



Attention!

A difference between the temperature displayed and the actual temperature is normal. Especially when:

- A new setting has recently been selected
- The door has been left open for a long time
- Warm food has been placed in the compartment.

Normal operating sounds

- You may hear faint gurgling or bubbling sounds when the refrigerant is pumped through the coils or tubing at the rear, to the cooling plate/evaporator or to the fixed freezer shelves.
- When the compressor is on, the refrigerant is being pumped round, and you will hear a whirring sound or pulsating noise from the compressor.
- A thermostat controls the compressor, and you will hear a faint 'click' when the thermostat cuts in and out.

Quick chill shelf

The Quick Chill Shelf can be placed in one of the upper grooves.

To maintain the best performance the shelf should be placed in the second groove from the top.

Fresh food refrigeration

To obtain the best performance, do not store warm food or evaporating liquids in the refrigerator; do cover or wrap the food, particularly if it has a strong flavour.

Do not cover the shelves with any protective material, such as paper, cardboard or plastic, which may obstruct the air circulation through them.

To help you use your refrigerator correctly, here are some more useful hints:

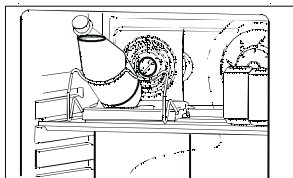
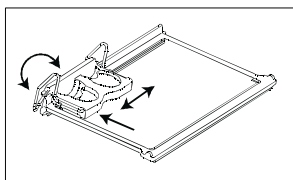
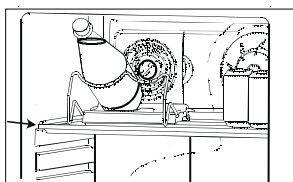
Raw meat (beef, pork, lamb & wild fowl): wrap in polythene bags and place in the meat drawer above the salad crispers.

Meat can only be stored safely in this way for one or two days at the most.

Fruit & vegetables: these should be thoroughly cleaned and placed in the bottom salad crispers.

Butter & cheese: these should be placed in special airtight containers or wrapped in aluminium foil or polythene bags to exclude as much air as possible.

Milk bottles: these should have a cap and should be stored in the bottle rack on the door.



Bottle and can holder

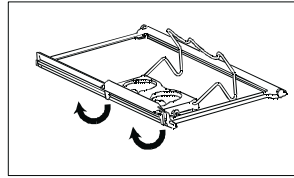
The side of the bottle and can holder is moveable to enable a more flexible placement of cans and bottles in front of the grid.

To allow the holder to be moved easier when moving sideways, press the shelf backwards.

The bottle support can be pulled out when chilling larger bottles.

Dismantling of the bottle and can holder


1. Take out the Quick Chill Shelf with holder from the cabinet.
2. To loosen the holder from the shelf, bend the hooks/brackets that surround the backside of the shelf.



Installation of the carbon filter

On delivery the carbon filter is placed in a plastic bag to secure the length of life of the carbon filter. The filter should be placed behind the grill before the cabinet is turned on.


1. The cover can be opened by simultaneously pressing the lever on the right of grill (1) and turning the cover outward (2).
2. The carbon filter is then mounted in the slot found in the back of the cover (3).

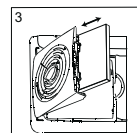
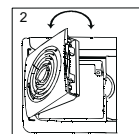
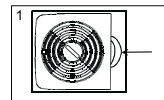
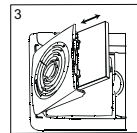
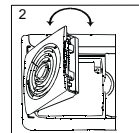
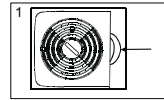
 The filter should be handled carefully so fragments do not loosen from the surface.

Change of the carbon filter

To maintain the best performance the carbon filter should be changed once a year with normal usage. New carbon filters can be purchased from your local dealer.

1. The filter is placed behind the grill and can be reached by opening the cover. The cover can be opened by simultaneously pressing the lever on the right of the grill (1) and turning the cover outward (2).
2. The carbon filter is then pulled out of its slot (3).
3. The new carbon filter is placed in the existing slot.

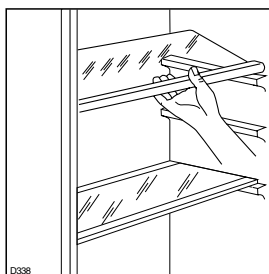
 The filter should be handled carefully so fragments do not loosen from the surface.



Movable shelves

The walls of the refrigerator have runners so that the shelves can be positioned as desired .

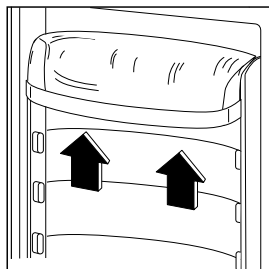
For better use of space, the front half-shelves can lie over the rear ones.



Positioning the door shelves

To allow the storage of food packages of various sizes, the door shelves can be adjusted in height. To make these adjustments proceed as follows:

Gradually pull the shelf in the direction of the arrows until it comes off, then reposition as required.



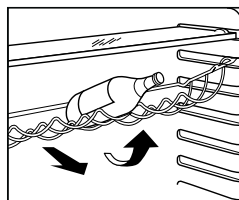
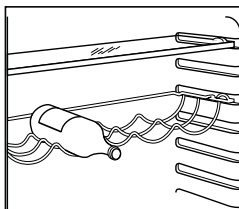
Bottle holder

Place the bottles (with the opening facing front) in the pre-positioned shelf.

If the shelf is positioned horizontally, place only closed bottles.

This bottle holder shelf can be tilted in order to store previously opened bottles.

To obtain this result, pull the shelf up so it can rotate upwards and be placed on the next higher level.





Hints and tips

Food storage

- To obtain the best results from your appliance, neither hot foods nor liquids which may evaporate, should be placed in the larder compartment.
- Keep the time between buying chilled food and placing it in your fridge as short as possible.
- Do not push food together too much, try to allow air to circulate around each item.
- Do not store food uncovered.
- Remove suspect food from your refrigerator and clean, refer to 'Maintenance and Cleaning'.

Energy saving advice

- Do not install the cabinet close to sources of heat, i.e. boiler or radiator.
- Locate the appliance in a cool well ventilated room and make sure that the air openings of the cabinet are not obstructed.
- Always leave warm food to cool down to room temperature before placing in the fridge.
- Thaw frozen food in the fridge. This will ensure safer defrosting of foods and reduce the work of the refrigeration unit.
- Try to avoid keeping the door open for long periods, or opening the door too frequently as warm air will enter the cabinet, and cause the compressor to switch on unnecessarily often.
- Ensure there are no obstructions preventing the door from closing properly.

Maintenance and cleaning

Before any maintenance or cleaning work is carried out, **DISCONNECT** the appliance from the **ELECTRICITY** supply.

Internal cleaning

Clean the inside and accessories with warm water and bicarbonate of soda (5ml to 0.5 litre of water). Rinse and dry thoroughly.



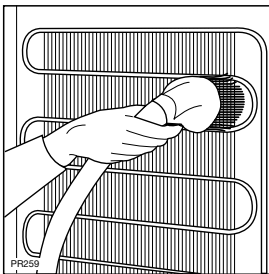
NEVER USE DETERGENTS, ABRASIVE POWDERS, HIGHLY PERFUMED CLEANING PRODUCTS OR WAX POLISHES, TO CLEAN THE INTERIOR AS THESE WILL DAMAGE THE SURFACE AND LEAVE A STRONG ODOUR.

When the appliance is not in use

When the appliance is not in use for long periods, disconnect from the electricity supply, empty all foods and clean the appliance, leaving the doors ajar to prevent unpleasant smells.

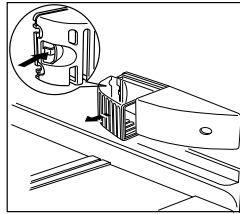
External cleaning

Once or twice a year dust the condenser (black grill) and the compressor at the back of the appliance, with a brush or vacuum cleaner, see figure, as an accumulation of dust will affect the performance of the appliance and cause excessive electricity consumption.



Changing the light bulb

Should the interior light fail to work, first switch off the appliance and disconnect from the electricity supply, then replace the bulb as follows;



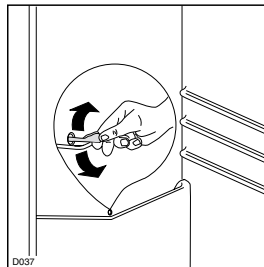
press on the rear hook and at the same time slide the cover in the direction indicated by the arrow.

Unscrew the bulb and replace it with one of the same power (the maximum power is shown on the light diffuser) available from your nearest Service Force Centre.

Replace the light cover by sliding it into its original position.

Defrosting

The refrigerator automatically defrosts every time the compressor stops. The water is discharged, via the pipe, into a tray located at the back of the appliance above the compressor, where it evaporates.



Important

To avoid defrost water overflowing into the fridge, periodically clean the water discharge hole in the centre of the V shaped drip collector at the back of the refrigerator compartment behind the fruit and vegetable drawer. Use the defrost cleaner provided which you will find already inserted into the discharge hole.

Remember to wash the defrost cleaner in hot soapy water at regular intervals. Dry thoroughly before replacing.

Something not working

If the appliance is not working correctly, please carry out the following checks, before contacting your local Service Force repair agent.

IMPORTANT: If you call out an engineer to a fault listed below, or to repair a fault caused by incorrect use or installation, a charge will be made even if the appliance is under guarantee.

SYMPTOM	SOLUTION
<ul style="list-style-type: none"> ■ No power to the appliance 	<ul style="list-style-type: none"> ◆ Check there is power at the socket. ◆ Check there is not a power cut by checking the household lights. ◆ Check the fuse has not blown.
<ul style="list-style-type: none"> ■ The light does not come on 	<ul style="list-style-type: none"> ◆ Ensure that the bulb is correctly fitted. ◆ Replace the bulb if it has blown. ◆ Check the door light switch is not jammed.
<ul style="list-style-type: none"> ■ The temperature in the fridge section is too high 	<ul style="list-style-type: none"> ◆ Check the electronic control in the fridge has the correct setting relative to ambient conditions. ◆ Check the ambient temperature is within the appliance's operating limits, please refer to the installation section in this instruction book. Relocate the appliance if necessary.
<ul style="list-style-type: none"> ■ The compressor runs continuously 	<ul style="list-style-type: none"> ◆ Check if the electronic control gives the correct temperature control. See "Setting the temperature". ◆ Check that the door is closed. ◆ Large quantities of food have recently been placed in the cabinet and/or door is frequently opened. ◆ Check that air ventilation is not obstructed.
<ul style="list-style-type: none"> ■ Noise 	<ul style="list-style-type: none"> ◆ Refer to normal operating sounds.
<ul style="list-style-type: none"> ■ Water under the salad bin 	<ul style="list-style-type: none"> ◆ Check the drain hole is not blocked. (see Maintenance and Cleaning).

Repairs - after sales service

Under no circumstances should you attempt to repair the machine yourself. Repairs carried out by inexperienced persons may cause injury or serious malfunctioning. Refer to your local Service Force Centre and always insist on genuine spare parts.

If your appliance is not performing satisfactorily; consult the fault finding guide within this instruction book (Something not working). In the event of a fault occurring which you cannot resolve yourself from advice given within this instruction manual your first step is to contact our extended warranty administrators on **0870 0107887** who will give you details for your local Service Force Repair Agent.

When contacting the repair agent, please quote the model (Mod.) and serial number (S.N.), both of which are shown on the rating plate located on the side of the oven door (see picture).

So that you always have these numbers at hand, we recommend you to make a note of them here:

Mod.:

PNC:

S.N.:

Your appliance is covered by a 3 year parts and labour guarantee (see separate details given at point of sale). Please retain your purchase receipt safely for the service engineer to verify the purchase details.

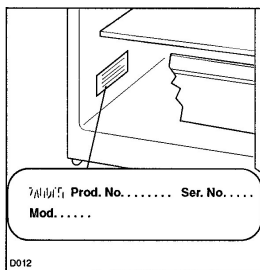
Spare parts

This product should be serviced by an authorised service engineer, and only genuine spare parts should be used.

Under no circumstances should you attempt to repair the appliance yourself.

Repairs carried out by inexperienced persons may cause injury or serious malfunctioning. Contact our extended warranty administrators on **0870 0107887** who will give you details for your local Service Force Repair Agent.

Always insist on genuine spare parts.



Manufacturer

Model


Energy Efficiency class


Energy Consumption kWh/year


Fresh food volume l

John Lewis JLLFW1809
A
191
375

Installation

 It is dangerous to alter the specifications or attempt to modify this product in any way.

 Care must be taken to ensure that the appliance does not stand on the electrical supply cable.

 Any electrical work required to install this appliance should be carried out by a qualified electrician or competent person.

Technical data

Dimensions	
Height	1800 mm
Width	600 mm
Depth	645 mm
Fridge Gross capacity	380 litres
Fridge Net capacity	375 litres

Rating

Supply voltage (50 Hz)	230-240 V
Connected load	1.5 A

Electrical connection

Any electrical work required to install this appliance should be carried out by a qualified electrician or competent person.



WARNING: THIS APPLIANCE MUST BE EARTHED.

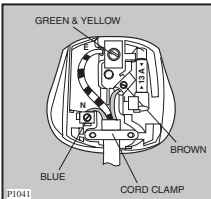
Should the appliance power supply cable need to be replaced, this must be carried out by a Service Force agent (see page 15). The manufacturer declines any liability should this safety measure not be observed.

Before switching on, make sure the electricity supply voltage is the same as that indicated on the appliance's rating plate. (See picture on page 15).

The appliance is supplied with a 13amp plug fitted. In the event of having to change the fuse in the plug supplied, a 13amp ASTA approved BS 1363/A fuse must be used.

Should the plug need to be replaced for any reason, proceed as described below. The wires in the mains lead are coloured in accordance with the following code:

Green and Yellow	- Earth
Blue	- Neutral
Brown	- Live



If you fit your own plug, the colours of the wires in the mains lead of your appliance may not correspond with the markings identifying the terminals in your plug.

Proceed as follows:

1. Connect the Green and Yellow (earth) wire to the terminal in the plug which is marked with the letter "E" or the earth symbol \perp or coloured green and yellow.
2. Connect the Blue (neutral) wire to the terminal in the plug which is marked with the letter "N" or coloured black.
3. Connect the Brown (live) wire to the terminal in the plug which is marked with the letter "L" or coloured red.

4. Upon completion there must be no cut, or stray strands of wire present and the cord clamp must be secure over the outer sheath.

WARNING:

A cut off plug inserted into a 13 amp socket is a serious safety (shock) hazard.

Ensure that the cut off plug is disposed of safely.



The plug must still be accessible after the appliance has been installed.



The appliance should not be connected to the electrical supply by means of an extension cable

**WARNING!**

The manufacturer declines any responsibility for damage or injury through failure to comply with the above safety precautions. Should the appliance power supply cable need to be replaced, this must be carried out by our Service Centre.

**WARNING!**

The power supply cable must be accessible after installing the machine

Permanent connection

In the case of permanent connection it is necessary that you install a double pole switch between the appliance and the electricity supply (mains), with a minimum gap of 3mm between the switch contacts and of a type suitable for the required load in compliance with the current electrical regulations.

The switch must not break the yellow and green earth cable at any point.

Warning

IF YOU ARE DISCARDING AN OLD APPLIANCE THAT HAS A LOCK OR CATCH ON THE DOOR, YOU MUST ENSURE THAT IT IS MADE UNUSABLE TO PREVENT YOUNG CHILDREN BEING TRAPPED INSIDE.

Depending upon the position which you choose for your appliance, you may wish to reverse the way in which the door opens. To do this, refer to instructions on "Door reversal directions".

Positioning

This appliance should only be installed at a location where the ambient temperature corresponds to the climate classification indicated on the rating plate, which is located at the left on the inside of the appliance.

The following table shows which ambient temperature is correct for each climate classification:

SN +10°C to +32°C

N +16°C to +32°C

ST +18°C to +38°C

T +18°C to +43°C

It should be located in a dry atmosphere, out of direct sunlight and away from extreme temperature e.g. not next to a boiler or radiator, or in a very cold room e.g. an outhouse. If these temperatures are exceeded i.e. colder or warmer, then the appliance may not operate correctly.

Important

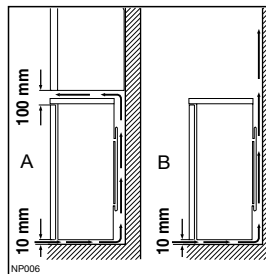
It must be possible to disconnect the appliance from the mains power supply; the plug must therefore be easily accessible after installation.

You should also ensure that air can circulate freely around the back and the top of the cabinet. There must also be at least 100 mm (4") distance between the top of the cabinet and any overhanging kitchen furniture (A). Ideally, the appliance should not be positioned beneath overhanging furniture (B).

Rear spacers

In the appliance, there are two spacers which must be fitted as shown in the figure.

Slacken the screws and insert the spacer under the screw head, then re-tighten the screws.

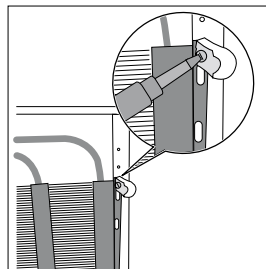
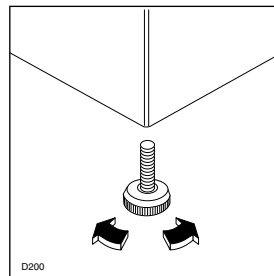


There should also be a gap of 25 mm either side of the appliance. Do not obstruct the space underneath. The back of the cabinet may be placed close to the wall but must not touch it. DO NOT install in places with restricted ventilation.

Adjust the level of the appliance by screwing out the adjustable foot, or feet, at the bottom of the cabinet using your fingers.

Important

It must be possible to disconnect the appliance from the mains power supply; the plug must therefore be easily accessible after installation.

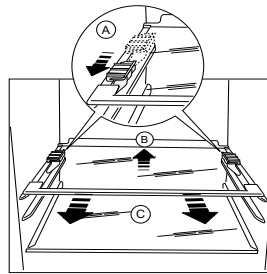


Shelf holders

Your appliance is equipped with shelf retainers that make it possible to secure the shelves during transportation.

To remove them proceed as follows:

Move the shelf holders in the direction of the arrow, raise the shelf from the rear and push it forward until it is freed and remove the retainers.



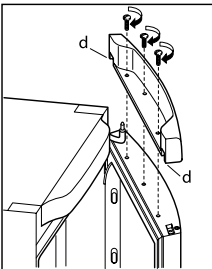
Door reversibility

Before carrying out any operations, remove the plug from the power socket.

We suggest that this be done with another person who will keep a firm hold on the doors of the appliance during the operations.

Open the door with the appliance in the upright position. Unscrew the screws and remove the upper door plastic trim.

Remove the little plastic cover from the door plastic trim and refit on the opposite side (d).



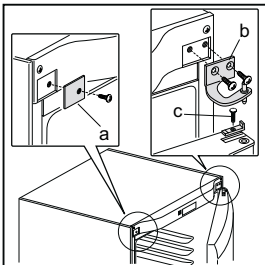
Lay the appliance onto its back side.

Remove the screw of the hinge cover plug (a).

Unscrew the upper hinge and remove it (b).

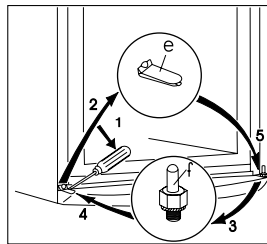
Unscrew the screw and remove the door stopper (c).

Remove the door:



Remove using a tool the cover (e) unscrew the lower hinge pivot (f) and place it on the opposite side.

Reinsert the cover (e) on the opposite side.



Reinsert the door .

Pay attention that the front board of the doors are parallel to the front board of the top.

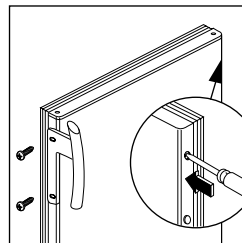
Fix the door stopper on the opposite side.

Position and fix the upper hinge (that can be found in the instruction for use bag) on the opposite side .

Fix the screw of the new cover hinge (that can be found in the instruction for use bag).

Lift up the appliance to vertical position.

Open the door and reposition the upper door plastic trim with screws.



Fix the handle on the opposite side, insert the plastic plugs into the holes left open that can be found in the instruction for use bag.



Reposition, level the appliance, wait for at least two hours and then connect it to the power socket.

In case you do not want to carry out the above operations, contact the nearest After Sales Service Force. The After Sales Service specialist will carry out the reversibility of the doors at your cost.



Warning

After having reversed the opening direction of the doors check that all the screws are properly tightened and that the magnetic seal adheres to the cabinet.

If the ambient temperature is cold (i.e. in Winter), the gasket may not fit perfectly to the cabinet. In that case, wait for the natural fitting of the gasket or accelerate this process by heating up the part involved with a normal hairdryer. Lay the appliance onto its back side.

John Lewis Partnership
171 Victoria Street
London SW1E 5NN
www.johnlewis.com

04/08

2223 448-61

Free Manuals Download Website

<http://myh66.com>

<http://usermanuals.us>

<http://www.somanuals.com>

<http://www.4manuals.cc>

<http://www.manual-lib.com>

<http://www.404manual.com>

<http://www.luxmanual.com>

<http://aubethermostatmanual.com>

Golf course search by state

<http://golfingnear.com>

Email search by domain

<http://emailbydomain.com>

Auto manuals search

<http://auto.somanuals.com>

TV manuals search

<http://tv.somanuals.com>