

Listening to FM and AM Broadcasts

Basic Tuner Operations

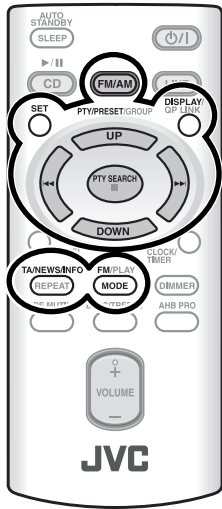
To	Press	
	On the System	On the remote
Select FM or AM		
Select a frequency		
Tune in to a preset station	—	
Change the FM reception mode (When an FM stereo broadcast is hard to receive or noisy)	—	

Presetting Stations

You can preset 30 FM and 15 AM stations manually.

1	Tune in to a station you want to preset. <ul style="list-style-type: none">You can also store the monaural reception mode for FM preset stations if selected.
2	Press to activate the preset number entry mode. <ul style="list-style-type: none">Finish the following process while the indication on the display is flashing.
3	Press to select a preset number for the station you store.
4	Press to store the station.

NOTE
When you unplug the AC power cord or if a power failure occurs, the preset stations will be erased in two days.



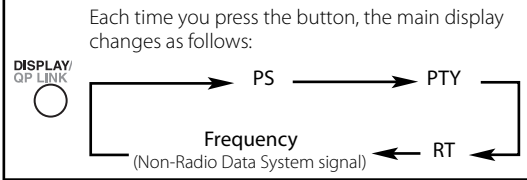
Receiving FM Stations with Radio Data System

Radio Data System allows FM stations to send an additional signal along with their regular program signals. With the System, you can receive the following types of Radio Data System signals.

PS (Program Service): Shows commonly known station names.
PTY (Program Type): Shows types of broadcast programs.
RT (Radio Text): Shows text messages the station sends.
Enhanced Other Networks: Provides the information about the types of the programs broadcast by the Radio Data System stations of the different networks.

NOTE
If you want to know more about Radio Data System, visit <http://www.rds.org.uk>.

Changing the Radio Data System Information



NOTE
If no Radio Data System signals are sent by a station, "NO PS," "NO PTY," or "NO RT" appears on the main display.

Searching for Programs by PTY Codes (PTY Search)

You can locate a particular kind of program from the preset stations (see the left column) by specifying the PTY codes.

1	Press to enter the PTY code setting mode. "PTY" and "SELECT" appear on the main display.
2	Select a PTY code.
3	The System searches 30 preset FM stations, stops when it finds the one you have selected, and tunes in to that station.

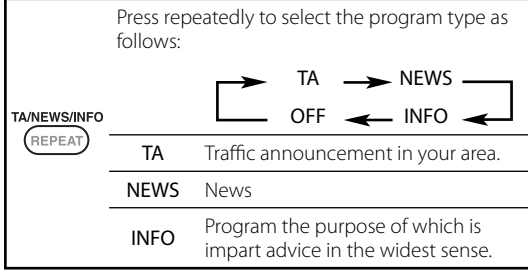
NOTES

- To stop searching any time during search, press PTY SEARCH.
- To continue searching after it stops on an unwanted station, press PTY SEARCH while the indications on the display are flashing.
- If no program is found, "NOTFOUND" appears on the main display.

Switching Temporarily to a Program of Your Choice Automatically

The Enhanced Other Networks function allows the System to switch temporarily to a preset FM station broadcasting a program of your choice (TA, NEWS, or INFO).

- This function works while listening to an FM station providing the required signals.



How the Enhanced Other Networks function actually works:

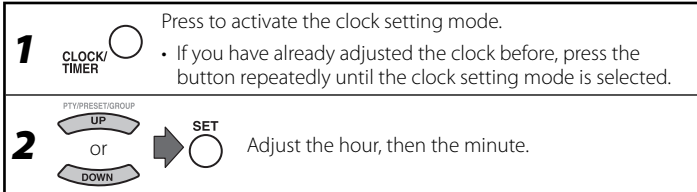
When a station starts broadcasting the program of your choice, the System automatically switches to the station. The PTY code indicator starts flashing.

After the program is over, the System goes back to the previously tuned station, but the function still remains active (the indicator stops flashing and remains lit).

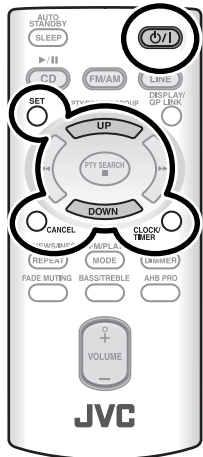
Setting the Clock and Daily Timer

Setting the Clock

Without setting the built-in clock, you cannot use Daily Timer and Sleep Timer.



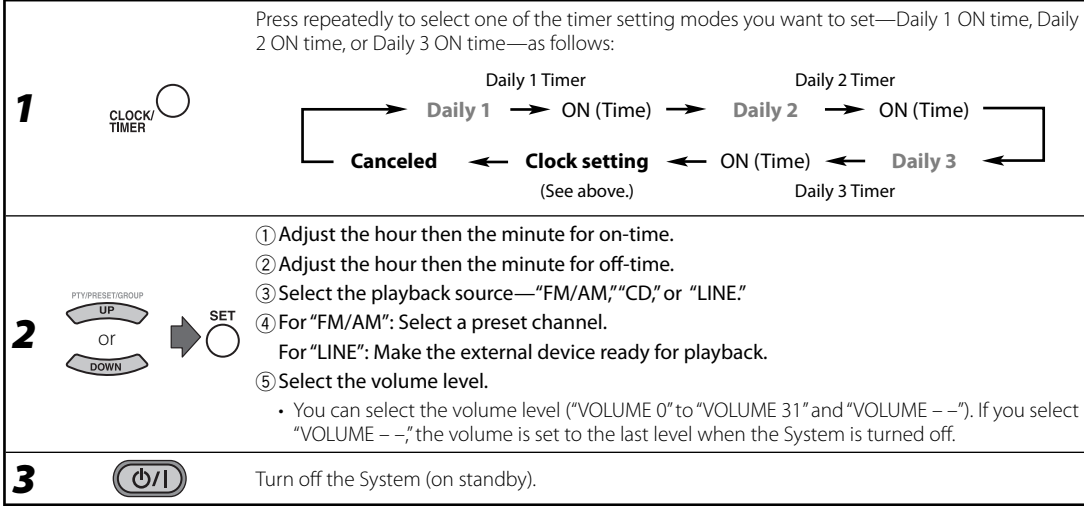
To exit from the clock setting, press CLOCK/TIMER as required.
To go back to the previous step, press CANCEL.



Setting the Daily Timer

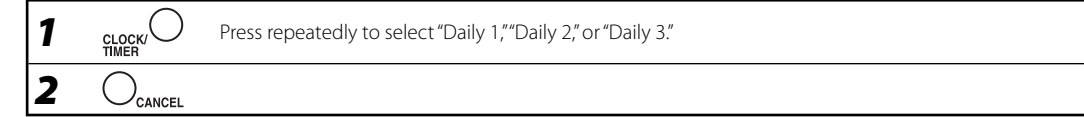
Using Daily Timer, you can wake up with your favorite music.

- You can store three Daily Timer settings; however, you can activate only one of Daily Timers at the same time.



To exit from the timer setting, press CLOCK/TIMER as required.
To correct a misentry during the process, press CANCEL. You can return to the previous step.

To turn off the Daily Timer



To turn on the Daily Timer again, select one of the timer settings by pressing CLOCK/TIMER, then press SET.

Learning More about This System

Basic and Common Operations (see page 3)

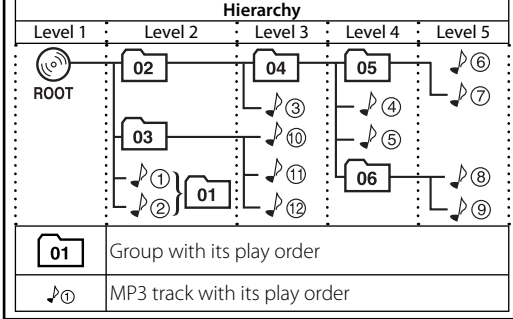
- Sound adjustments also affect the sound through the headphones.
- Sound adjustments do not affect recording to the external device.
- You can set the clock and daily timer while the SAVE mode is turned on. While setting the clock or daily timer, the display is turning on.

Playing Back Discs (see pages 4)

- This System cannot play "packet write" discs.
- For MP3 playback...
 - MP3 discs are required a longer readout time than regular CDs. (It depends on the complexity of the group/file configuration.)
 - Some MP3 files cannot be played back and will be skipped. This result from their recording processes and conditions.
 - When making MP3 discs, use ISO 9660 Level 1 or Level 2 for the disc format.
 - This System can play back MP3 files with the extension code <.mp3> (regardless of the letter case—upper/lower).
 - It is recommended that you make each MP3 file at a sampling rate of 44.1 kHz and at bit rate of 128 kbps. This System cannot play back files made at bit rate of less than 64 kbps.
 - Playback order of MP3 tracks may be different from the one you have intended while recording. If a folder does not include MP3 tracks, they are ignored.
- This System can recognize up to 511 tracks in a disc. Also, the System can recognize up to 150 tracks per group and up to 99 groups in a disc. (for MP3)
 - If there are any unplayable files in a folder, those files are also counted in the total file number.
 - Playable files which do not belong to any groups are handled as Group 1.

MP3 groups/tracks configuration

This System plays back MP3 tracks as follows.



Listening to FM and AM Broadcasts (see page 5)

- If the System takes time to show the Radio Data System information—PS, PTY, RT signals, "PS," "PTY," or "RT" will appear while searching.

Connecting a Portable Audio Device (see page 6)

Playing back a portable audio device:

- If a component connected to the LINE IN jack is not loud enough, QP Link may not work properly. In such cases, adjust the volume level of the component louder so that the System can detect the sound signal properly.
- Changing from "LINE" to another source while QP Link works will deactivate QP Link temporarily. In this case, the following reactivates QP Link:
 - Pressing QP LINK on the remote control.
 - When no sound signal comes from the LINE IN jack for about 30 seconds after the System is turned off.
- If you press to turn the System off or if preset Timer turns the System off while QP Link works, the System deactivates QP Link temporarily. In such cases, the following reactivates QP Link:
 - When no sound signal comes from the LINE IN jack for about 30 seconds after the System is turned off.
 - When you turn on the power again

Setting the Clock and Daily Timer (see left)

- "0:00" will flash on the display until you set the clock.
- The clock may gain or lose 1 to 2 minutes per month. If this happens, readjust the clock.
- When you unplug the AC power cord or if a power failure occurs, the clock and the timer will be canceled. You need to set the clock first, then the timer again.
- If you do not specify the preset station correctly while setting a timer, the currently selected station will be played when the timer is activated.
- When the on-time of the daily timer comes, the System sets the volume level gradually to the preset level after about 5 seconds.

Timer Priority:

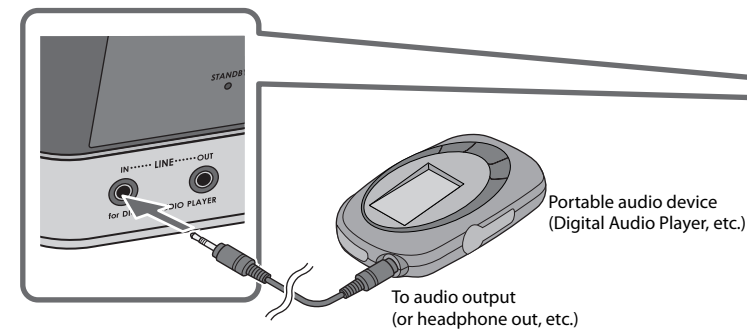
- If you set the Sleep Timer after Daily Timer starts playing the selected source, Daily Timer is canceled.

Connecting a Portable Audio Device

This System has LINE IN/OUT jacks to connect a portable audio device. Connect between the device and the System by using the stereo mini plug cord (not supplied).

IMPORTANT:
It should be noted that it may be unlawful to re-record pre-recorded tapes, records, or discs without the consent of the owner of copyright in the sound or video recording, broadcast or cable programme and in any literary, dramatic, musical, or artistic embodied therein.

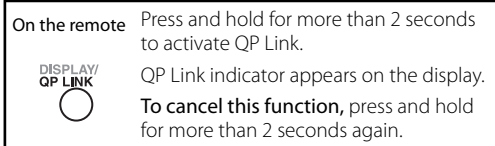
Playing back a portable audio device



1	"LINE" appears on the main display.
2	Start playing the device connected.
3	Adjust the volume level to the level you want to listen to.

To Play Back a Portable Audio Device Easily

By using QP Link (Quick Portable Link), you can easily start playing back a portable audio device connected to the LINE IN jack.

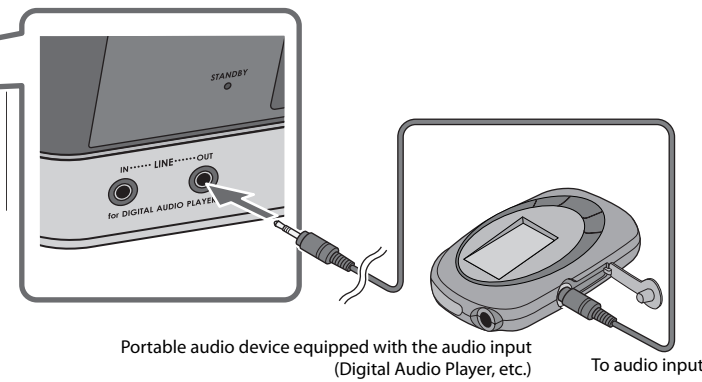


When QP Link is activated, connecting a portable device to the LINE IN jack and starting playback performs the following:

- While listening to another source... Changes the source to "LINE" automatically. (If you change from "LINE" to another source, QP Link will be canceled.)
- While the System is on standby... Turns on the System and changes the source to "LINE" automatically (except when the display is turned off).

NOTE
See "Learning More about This System" on page 7.

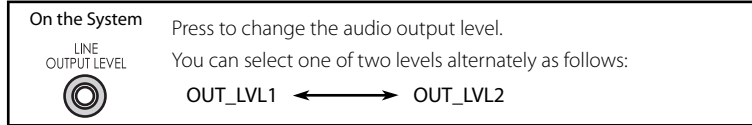
Recording to a portable audio device



1	Start recording or standby recording on the device.
2	Start playing the CD or tune into the station you want to recording.

To Select the Audio Output Level

If the recorded sound on the device connected to the LINE OUT jack is too loud or too quiet, you can change the audio output level through the LINE OUT jack (without changing the volume level).



Troubleshooting

If you are having a problem with your System, check this list for a possible solution before calling for service.

General

Power does not come on.
→ Power plug is not inserted securely. Plug in securely.
Adjustments or settings are suddenly canceled before you finish.
→ There is a time limit. Repeat the procedure again.

Operations are disabled.
→ The built-in microprocessor may malfunction due to external electrical interference. Unplug the AC power cord and then plug it back in.

Unable to operate the System from the remote control.
→ The path between the remote control and the remote sensor on the System is blocked.
→ The batteries are exhausted.

No sound is heard.
→ Speaker connections are incorrect or loose.
→ Headphones are connected.

Radio Operations

Hard to listen to broadcasts because of noise.
→ Antennas connections are incorrect or loose.
→ The AM loop antenna is too close to the System.
→ The FM antenna is not properly extended and positioned.

Disc Operations

The disc does not play.
→ The disc is placed upside down. Place the disc with the label side up.
→ MP3 disc is recorded with the "packet writing (UDF file)." It cannot be played.
Check the files you want to play back.

ID3 Tag on an MP3 disc cannot be shown.
→ There are two types of ID3 Tag—Version 1 and Version 2. This System can only show ID3 Tag Version 1.

MP3 groups and tracks are not played back as you expect.
→ The playing order is determined when the disc was recorded. It depends on the writing application.

The disc sound is discontinuous.
→ The disc is scratched or dirty.
The disc tray does not open or close.
→ The AC power cord is not plugged in.

Timer Operations

Daily Timer does not work.
→ The System has been turned on when the on-time comes. Timer starts working only when the System is turned off.

Specifications Specifications and appearance are subject to change without prior notice.

Amplifier section

OUTPUT POWER:
10 W (5 W + 5 W) at 4 Ω (10% THD)
Speakers/Impedance: 4 Ω – 16 Ω
Audio Input LINE IN: 500 mV/47 kΩ (at "LINE IN LVL1")
250 mV/47 kΩ (at "LINE IN LVL2")
125 mV/47 kΩ (at "LINE IN LVL3")

Audio Output LINE OUT: 1.0 Vrms (10 kΩ) (at "LINE OUT LVL1")
2.0 Vrms (10 kΩ) (at "LINE OUT LVL2")

Tuner section

FM Tuning range: 87.50 MHz - 108.00 MHz
AM (MW) Tuning range: 522 kHz - 1 629 kHz

CD player section

Dynamic range: 88 dB
Signal-to-noise ratio: 93 dB
Wow and flutter: Immeasurable

Speakers

Speaker units: 8 cm cone x 1
Impedance: 4 Ω
Dimensions (approx.): 130 mm x 171 mm x 136 mm (W/H/D)
Mass (approx.): 0.75 kg each

Supplied Accessories

See page 2.

General

Power requirements: AC 230 V ~ , 50 Hz
Power consumption:
20.0 W (POWER ON), 3.6 W (STANDBY mode)
3.0 W or less (SAVE mode)
Mass: 1.8 kg
Dimensions (W x H x D): 270 mm x 68.5 mm x 203 mm

Maintenance

To get the best performance of the System, keep your discs and mechanism clean.

Handling discs

- Remove the disc from its case by holding it at the edge while pressing the center hole lightly.
- Do not touch the shiny surface of the disc, or bend the disc.
- Put the disc back in its case after use.
- Be careful not to scratch the surface of the disc when placing it back in its case.
- Avoid exposure to direct sunlight, temperature extremes, and moisture.

To clean the disc:
Wipe the disc with a soft cloth in a straight line from center to edge.

Cleaning the System

- Stains should be wiped off with a soft cloth. If the System is heavily stained, wipe it with a cloth soaked in water-diluted neutral detergent and wrung well, then wipe clean with a dry cloth.
- Since the System may deteriorate in quality, become damaged or get its paint peeled off, be careful about the following:
 - DO NOT wipe it with a hard cloth.
 - DO NOT wipe it strong.
 - DO NOT wipe it with thinner or benzine.
 - DO NOT apply any volatile substance such as insecticides to it.
 - DO NOT allow any rubber or plastic to remain in contact for a long time.

SAFETY INSTRUCTIONS
"SOME DOS AND DON'TS ON THE SAFE USE OF EQUIPMENT"

This equipment has been designed and manufactured to meet international safety standards but, like any electrical equipment, care must be taken if you are to obtain the best results and safety is to be assured.

Do read the operating instructions before you attempt to use the equipment.

Do ensure that all electrical connections (including the mains plug, extension leads and interconnections between pieces of equipment) are properly made and in accordance with the manufacturer's instructions. Switch off and withdraw the mains plug when making or changing connections.

Do consult your dealer if you are ever in doubt about the installation, operation or safety of your equipment.

Do be careful with glass panels or doors on equipment.

DON'T continue to operate the equipment if you are in any doubt about it working normally, or if it is damaged in any way—switch off, withdraw the mains plug and consult your dealer.

DON'T remove any fixed cover as this may expose dangerous voltages.

DON'T leave equipment switched on when it is unattended unless it is specifically stated that it is designed for unattended operation or has a standby mode.

Switch off using the switch on the equipment and make sure that your family know how to do this.

Special arrangements may need to be made for infirm or handicapped people.

DON'T use equipment such as personal stereos or radios so that you are distracted from the requirements of traffic safety. It is illegal to watch television whilst driving.

DON'T listen to headphones at high volume as such use can permanently damage your hearing.

DON'T obstruct the ventilation of the equipment, for example with curtains or soft furnishings.

Overheating will cause damage and shorten the life of the equipment.

DON'T use makeshift stands and NEVER fix legs with wood screws—to ensure complete safety always fit the manufacturer's approved stand or legs with the fixings provided according to the instructions.

DON'T allow electrical equipment to be exposed to rain or moisture.

ABOVE ALL

- NEVER let anyone, especially children, push anything into holes, slots or any other opening in the case—this could result in a fatal electrical shock;
- NEVER guess or take chances with electrical equipment of any kind—it is better to be safe than sorry!

Free Manuals Download Website

<http://myh66.com>

<http://usermanuals.us>

<http://www.somanuals.com>

<http://www.4manuals.cc>

<http://www.manual-lib.com>

<http://www.404manual.com>

<http://www.luxmanual.com>

<http://aubethermostatmanual.com>

Golf course search by state

<http://golfingnear.com>

Email search by domain

<http://emailbydomain.com>

Auto manuals search

<http://auto.somanuals.com>

TV manuals search

<http://tv.somanuals.com>