

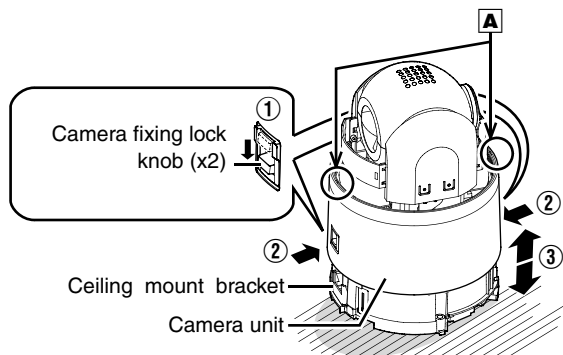
## Changes in mounting the camera

The ceiling mount bracket comes attached to the camera unit. Before installing, unfasten the ceiling mount bracket from the camera unit.

- ① Check to ensure that the camera fixing lock knobs (x2) is not turned on.
  - If it is locked, slide the camera fixing lock knobs to unlock in the direction as shown below.
- ② Push in the camera fixing lock knobs (x2) from both left and right sides in the direction as illustrated in the diagram.
  - Unfasten the ceiling mount bracket on a table to prevent it from falling off.

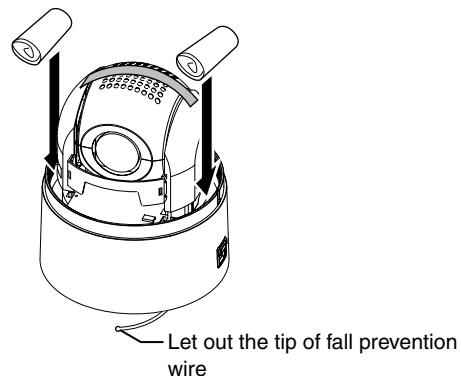
### Memo :

- If it is difficult to push in the camera fixing lock knob, push in while pressing the edge of camera (figure **A**) against the table where the process is being carried out.
- ③ Lift the camera unit upward to remove the ceiling mount bracket, and pull down in the direction as indicated.



### ■ Precautions during transportation

When mounting ceiling mount bracket to the camera unit during transportation, let out the tip of fall prevention wire so that it is not caught. If the fall prevention wire is caught in the gap of ceiling mount bracket, the ceiling mount bracket might not be able to detached from the camera unit.



## Free Manuals Download Website

<http://myh66.com>

<http://usermanuals.us>

<http://www.somanuals.com>

<http://www.4manuals.cc>

<http://www.manual-lib.com>

<http://www.404manual.com>

<http://www.luxmanual.com>

<http://aubethermostatmanual.com>

Golf course search by state

<http://golfingnear.com>

Email search by domain

<http://emailbydomain.com>

Auto manuals search

<http://auto.somanuals.com>

TV manuals search

<http://tv.somanuals.com>