

JVC PROFESSIONAL

V.NETWORKS

Visual Network System



VN-C3U • Optical 10x Zoom • Pan/Tilt • Alarm In/Out

VN-C2U • Pan/Tilt • Alarm In/Out

VN-C1U
• Fixed Lens
• Alarm In/Out

Network-Ready Remote Monitoring

<http://www.jvc-victor.co.jp/english/pro/vnetworks/index-e.html>

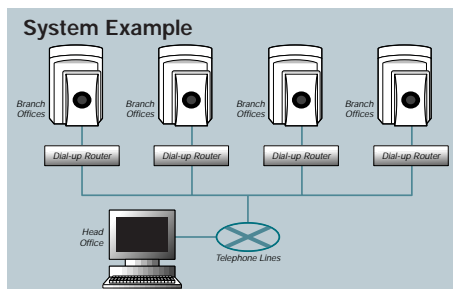
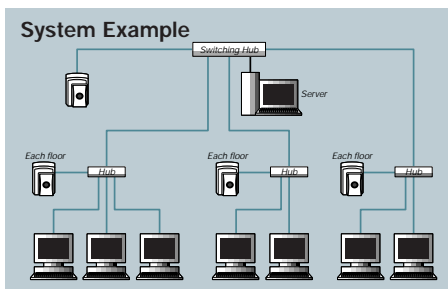
From remote monitoring to live image distribution, V.NETWORKS is your eye on the world. Featuring Ethernet connectivity, a powerful 10x optical zoom and pan/tilt, this innovative system allows you to track live images anytime and anywhere. No PC is required — all you need is a network connection. So whether you're looking for a remote monitoring tool or a simple way to serve images on the network, V.NETWORKS is today's most complete solution.

Features

- Direct Ethernet Connection
- 10x Optical Zoom (VN-C3U)
- Built-in Multi-Angle Pan/Tilt Capability (VN-C3U/C2U)
- Alarm In/Out Function
- Simple Record and Playback Function
- Viewer/Controller Software Included

Direct Ethernet Connection

Simply connect your V.NETWORKS camera to an Ethernet network using 10Base-T cable and assign it an IP address. That is all you need to do to get it up and running over a LAN. Using a Dial-up Router, V.NETWORKS cameras can be managed from many different remote locations.



10x Optical Zoom (VN-C3U)

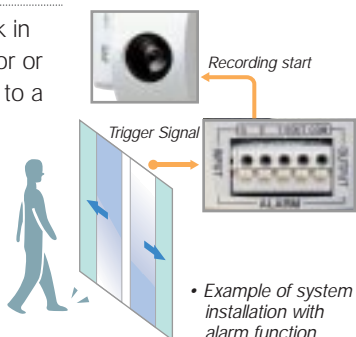
In spite of its compact size, the VN-C3U incorporates a powerful built-in optical 10x zoom mechanism that can easily be controlled from your PC.



Alarm In/Out Function

V.NETWORKS can be set to work in conjunction with an infrared sensor or door alarm, automatically moving to a preset position when an alarm signal is received.* Automatic alarm recording is also possible.

*Pre-setting of desired camera angles or zoom ratios is necessary.



Built-in Multi-Angle Pan/Tilt Capability (VN-C3U/C2U)

The high-speed pan/tilt function gives you control over horizontal, vertical and diagonal camera movement. Quick access to the desired monitoring point is possible with 10 (6 for C2U) preset positions.



Viewer/Controller Software Included

The Viewer/Controller Software (included) can control a variety of camera operations including network and picture quality setting, as well as pan/tilt and zoom control. You can also operate recording and playback of the camera images.



Viewer/Controller Software

Software Products (optional)

VN-S100U/S200U Multi-Camera Browser Software

- Simultaneous display of multiple cameras on a single screen (VN-S100U: Up to 4 windows, VN-S200U: Up to 16 windows)
- Timer recording function
- Sequential switching function



VN-S10WU Web Server

- Internet connection capability for VN-C1U/C2U/C3U
- Simultaneous access to a single camera by up to 256 users

Specifications

	Model	VN-C1U	VN-C2U	VN-C3U
Camera	Image Sensor	1/3" CMOS 300,000 pixels		
	Zoom	N/A		Optical 10x
	Focal Length (f)	7mm		5.8mm — 58mm
	Aperture Ratio (F)	F2		F1.8
	Focus	Manual		Auto/Manual
	Min. Object Distance	1.0m — ∞		
Interface	10Base-T (Ethernet) IEEE802.3			
Alarm I/O	Input x 2, Output x 1			
Protocol	UDP/IP			
Picture	Resolution (Pixels)	160 x 120, 320 x 240, 640 x 480		
	Compression	JPEG		
Frame Rate (fps)*	160 x 120	15		
	320 x 240	10		
	640 x 480	5		
Position Memory	N/A	6 positions	10 positions	
Pan/Tilt Angle	Pan	N/A	+50° — -50°	+160° — -160°
	Tilt	N/A	+5° — -75°	0° — -90°
Pan/Tilt Speed	N/A	160°/s	100°/s	
View Through	JVC Controller Software			
Power Requirement	DC5V 0.6A (Max.)	DC5V 1.4A (Max.)	DC12V 1.7A (Max.)	
Dimensions (H x W x D)	122mm x 82mm x 97mm (4-4/3" x 3-1/4" x 3-7/8")		166mm x 110mm x 110mm (6-1/2" x 4-3/8" x 4-3/8")	
Weight	230g (8.2 oz.)	260g (9.25 oz.)	730g (26 oz.)	

*Frame rate varies depending on the operating environment.

JVC PROFESSIONAL

DISTRIBUTED BY V.NETWORKS Website: <http://www.jvc-victor.co.jp/english/pro/vnetworks/index-e.html>
E.&O.E. Design, dimensions and specifications are subject to change without notice.

Free Manuals Download Website

<http://myh66.com>

<http://usermanuals.us>

<http://www.somanuals.com>

<http://www.4manuals.cc>

<http://www.manual-lib.com>

<http://www.404manual.com>

<http://www.luxmanual.com>

<http://aubethermostatmanual.com>

Golf course search by state

<http://golfingnear.com>

Email search by domain

<http://emailbydomain.com>

Auto manuals search

<http://auto.somanuals.com>

TV manuals search

<http://tv.somanuals.com>