

# JVC®



## V.NETWORKS

---

# VN-C3WU



## INSTRUCTIONS

This instruction manual is printed on recycled paper.

Thank you for purchasing the JVC VN-C3WU. To gain maximum benefit from this product, read this instruction manual carefully before use and retain it for future reference.

The serial number is very important for maintaining quality of your product. At the time of purchase, check to see that the serial number is correctly printed on the top of the unit and that the serial numbers on the unit and warranty match.

### For Customer Use:

Enter below the Model No. and Serial No. which are located on the rear of the cabinet. Retain this information for future reference.

Model No. \_\_\_\_\_

Serial No. \_\_\_\_\_

## Safety Precautions



### CAUTION

RISK OF ELECTRIC SHOCK  
DO NOT OPEN



CAUTION: TO REDUCE THE RISK OF ELECTRIC SHOCK, DO NOT REMOVE COVER (OR BACK). NO USER-SERVICEABLE PARTS INSIDE. REFER SERVICING TO QUALIFIED SERVICE PERSONNEL.



The lightning flash with arrowhead symbol, within an equilateral triangle is intended to alert the user to the presence of uninsulated "dangerous voltage" within the product's enclosure that may be of sufficient magnitude to constitute a risk of electric shock to persons.



The exclamation point within an equilateral triangle is intended to alert the user to the presence of important operating and maintenance (servicing) instructions in the literature accompanying the appliance.

### Information for USA

This device complies with part 15 of the FCC Rules. Changes or modifications not approved by JVC could void the user's authority to operate the equipment.

Due to design modifications, data given in this instruction book are subject to possible change without prior notice.

**WARNING:**  
TO REDUCE THE RISK OF FIRE OR ELECTRIC SHOCK, DO NOT EXPOSE THIS APPLIANCE TO RAIN OR MOISTURE.

**AVERTISSEMENT:**  
POUR EVITER LES RISQUES D'INCENDIE OU D'ELECTROCUTION, NE PAS EXPOSER L'APPAREIL A L'HUMIDITE OU A LA PLUIE.

### INFORMATION (FOR CANADA) RENSEIGNEMENT (POUR CANADA)

This Class A digital apparatus complies with Canadian ICES-003.

Cet appareil numérique de la Class A est conforme à la norme NMB-003 du Canada.

## **WARNING**

### ■ **Keep away from moisture**



Fire or electrical shock can result from the presence of moisture.

Spillage can occur from objects containing water (flower vases, flower pots, cups, cosmetics, pharmaceuticals, etc.) and should not be placed on top of this device.

### ■ **Do not touch**



Do not touch lines (antenna wires, phone lines, etc.) connected to this device or power plugs during a thunder storm because this can result in electrical shock.



- When installing this device, maintain a space of 10cm or more between this device and the wall. Also keep other devices at a distance to ensure good radiation. Internal heat can result in fire.

### **Warning**

This is a class A product. In a domestic environment this product may cause radio interference in which case the user may be required take adequate measures.

# PRECAUTIONS FOR SAFE AND PROPER USE

## To ensure safety

■ **Always observe the following to ensure correct and safe usage of this device.** Read Safety Precautions thoroughly before using this device. The safety precautions contain important information and should always be observed. After reading, store in a readily available location for future reference.

## Regarding Symbol Indications

Numerous symbols are employed as indication in the precautions for safety, precautions for handling, and in the indication to the products. These are designed to prevent in advance any possible infliction of injury on you and other individuals and the damage of properties through the proper use of the product. The symbols and meanings are shown below. Grasp the contents of the symbols completely before reading this manual.



**WARNING**

This represents the contents in which the probabilities for death or serious injury are assumed if this symbol indication is ignored and the product is erroneously handled.



**CAUTION**

This represents the contents in which the probabilities for injury to be inflicted are assumed and the contents in which material damages to be sustained are assumed if this symbol indication is ignored and the product is erroneously handled.

## Examples of Symbol Indications



This symbol informs you of the presence of the contents that demands caution (including danger and warning). Specifically prohibited contents (caution against electric shock in case of the left symbol) are illustrated in the symbol.










This symbol informs you of prohibited actions. Specifically prohibited contents (prohibition of disassembly in case of the left symbol) are illustrated in the symbol and its vicinity.



This symbol informs you of the contents that forces you to take some action or gives you some guidelines or instructions. Specific contents of instructions (unplug the power cord from the outlet in case of the left symbol) are illustrated.

---

## Cautions

- Do not install this device in locations such as the following.  
To avoid the possibility of fire or electrical shock, do not install this device in locations such as the following. 
  - Where there is excessive humidity or dust.  
Do not install where there is excessive humidity or dust.  
Avoid locations with oil smoke or steam.
  - Locations where temperatures are high.  
Do not install in locations where temperatures are extremely high due to direct contact with sunlight or proximity to a heater.
- Do not connect or disconnect the power cord or plug with wet hands because this can result in electrical shock. 
- Do not place heavy objects on top of this device.  
Loss of balance could cause falling and result in injury or damage. 
- Do not stand on this device.  
This could cause overturning and result in injury or damage. Use special caution with children. 
- Use only the specified accessories.   
Use only the accessories specified in the instruction manual with this device. The use of other accessories can result in fire or electrical shock. 
- Have your local dealer perform an internal inspection once every three years.   
Accumulated dust inside this device can eventually result in fire or malfunction if not removed periodically. It is more effective to have this inspection performed before the rainy season and when humidity is high. Consult your local dealer concerning the inspection fee.
- The power IN jack is exposed, so use caution to avoid shorting with metal objects, etc., when connecting and disconnecting the power cable.
- Do not allow children with the carton and bags used for packing because this could result in suffocation.
- Do not connect any device that exceeds the ratings to the Alarm jack because this may damage the main unit.

---

## **Cautions**

- This instruction manual may not be reproduced in part or in its entirety.
- Use caution to avoid infringing the copyrights of others during use.
- Please note that this company does not assume any responsibility in the case of any possible errors that may be found in this instruction manual.
- The contents of this instruction manual are subject to change without notice.
- When this product is discarded, always observe all applicable laws and regulations.

## **Trademarks**

Microsoft and Windows are registered trademarks of Microsoft Corporation of the U.S. in the U.S. and other countries.

The marks <sup>TM</sup>, ©, ®, etc., are not used in this instruction manual.

Any other company names and product names mentioned in this instruction manual are the trademarks or registered trademarks of the respective companies.

## **Before Saving Important Images**

- Due to provisions of the copyright law, images recorded and saved from TV broadcasts and recorded tapes, etc., and recorded and saved images of printed materials such as posters, etc., cannot be used for any purpose other than personal enjoyment without the express written permission of the copyright holder.
- When recording important images, always make test shots beforehand to make sure that recording and display are correct. Also use caution concerning available hard disk capacity.
- Please note that compensation will not be paid in the case that normal recording and playback are not possible due to problems with this product or with the computer software, etc.

---

## Contents

Safety Precautions .....	2
Package Contents .....	8
Operating Environment .....	9
VN-C3WU Installation and Setup .....	11
Before starting installation and setup .....	11
Names of VN-C3WU parts .....	11
Installation and setup .....	12
Alarm IN/OUT connection .....	14
Setting the VN-C3WU IP address .....	15
Changing the IP address of the PC .....	15
Changing internal settings .....	17
Restore to the original PC IP address .....	22
VN-C3WU connection test .....	22
VN-C3WU / Web page .....	24
Top page .....	24
Still image page .....	25
Live image page .....	25
Control page .....	26
Control Window .....	27
Setting page .....	31
How to link the VN-C3WU images .....	38
Displaying live images .....	38
Displaying live images .....	38
Troubleshooting .....	40
Specifications .....	42



## Package Contents

This product includes all of the following items. If any item should be missing, please contact your local dealer.

- VN-C3WU main unit**
- Instruction manual (this document)**





## Operating Environment

The environment described below is necessary for operation of the VN-C3WU.

### **A personal computer running the following WWW browser software:**

WWW browser software that is compatible with JavaScript or Frame. Netscape 4.0 or higher, or Internet Explorer 4.0 or higher, is required.

CPU performance and memory capacity should be the recommended values for the WWW browser software used. To ensure the smooth display of animated images on a large screen, these values should be even larger than those recommended.

Also, images from the camera will not be correctly displayed in the 256-color mode, etc.

- In the case of Internet Explorer, an environment in which JAVA can be executed correctly is necessary.

### **LAN environment**

The VN-C3WU operates as a web browser using HTTP protocol.

Access linking by host name is possible with an environment able to use DNS (Domain Name System).

#### **Caution**

The standard used for connection to the VN-C3WU is 10BASE-T.

The VN-C3WU and a personal computer can be connected directly at 1: 1 by using cross cables. (Although rare, the use of cross cables is not possible with some LAN boards.)

---

## To ensure correct usage

- When installing, avoid the following.
  - Locations subject to rain and water.
  - Locations where the ambient temperature exceeds the range of 0 - 40 (recommended) degrees C.
  - Locations with vibration.
  - Locations with excessive dust, oil or gas.
- When this product is used with AGC on (Auto on), the sensitivity will be increased automatically in dark places, so the screen may flicker in some cases. This is not a malfunction.
- When this product is used with Auto on, in some cases the recorded colors may differ slightly from the natural colors due to the principle of the automatic tracking color balance circuit.
- When any bright object such as a lamp, etc., is photographed, white bands may appear above and below the bright object. This is called smearing, a phenomenon caused by the characteristics of the individual pixels, and is not a malfunction.
- When panning and tilting the VN-C3WU, do not apply force to any part other than the body because this could result in damage or a malfunction.
- Use caution to avoid catching on the sensor insert button of the alarm input/output jack. In case this happens and disconnection from the alarm input/output jack occurs, return to the original location and use there.



# VN-C3WU Installation and Setup

## Before starting installation and setup

It is necessary to set an IP address for each VN-C3WU unit. Use the following procedure for the setup of individual units. (If the power is not turned on, the installation operation can be performed at one time.)

**1. Install the VN-C3WU.**

※ Only in cases of installation in a location where the power cannot easily be turned on, complete steps 2 to 4 before installing.

**2. Connect the VN-C3WU to a network.**

(With the VN-C3WU power turned on.)

**3. Set the VN-C3WU IP address.**

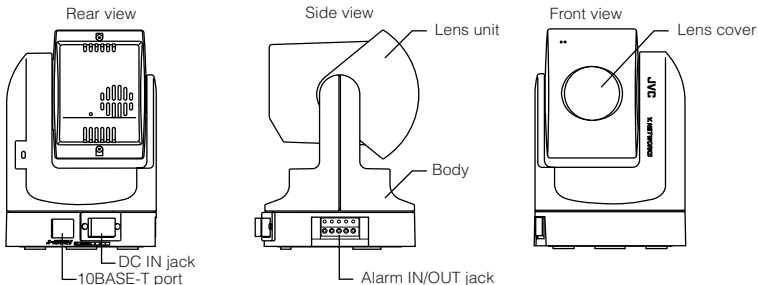
※ When setting the VN-C3WU IP address, be sure to contact the network manager for assignment or approval.

**4. Alarm IN/OUT connection.**

**5. VN-C3WU access test.**

※ This test is performed after any change to confirm the IP address.

## Names of VN-C3WU parts



# Installation and setup

## 1. Installation

Use the optional bracket (Model VN-BK30) for installation.

Make the power and network connections after completion of the installation work.

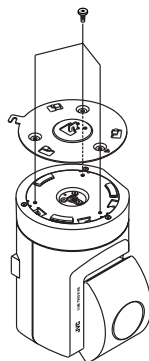
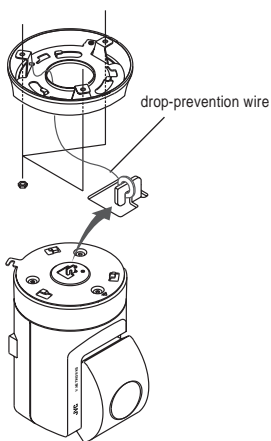
### Caution

Install in a location with sufficient strength to prevent falling.  
VN-C3WU units can be installed as shown in the diagram below.

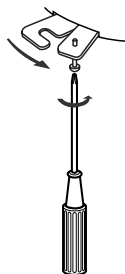
- ① Attach the ceiling fixer with the P hole pointing toward the front of the camera.

- ② Mount the camera body fixer on the VN-C3WU.

- ③ Attach the drop-prevention wire of the ceiling fixer to the camera body fixer.



- ④ Mount the VN-C3WU on the ceiling fixer by rotating clockwise, then tighten the screw of the camera body fixer.



## 2. Connecting to a network

Turn on the power of only one VN-C3WU unit.

When network connection is completed and the power is turned on, the VN-C3WU unit will be connected to the network at the following IP address.

Factory set (Default) IP address	192. 168. 0. 2
----------------------------------	----------------

- \* Use a straight cable when connecting to a hub.  
Use a cross cable when connecting directly to a PC.

Power supply connection cable

### ● About the power supply connection cable

- Length: 30m or less.
- Recommended model: UL1007, UL1015 or equivalent cable with wire equivalent to ID AWG #20 or larger.

#### Caution

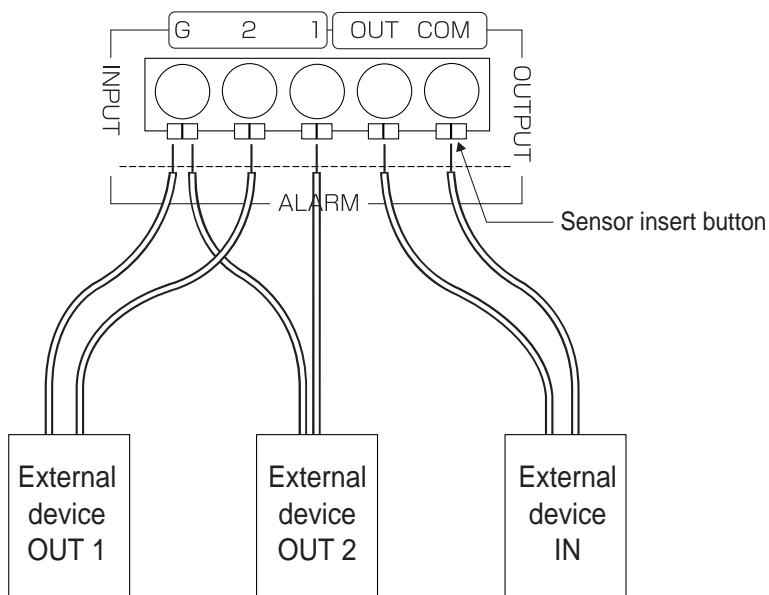
All VN-C3WU units are set to the same IP address at the factory; therefore, if the power of multiple VN-C3WU units is turned on at the same time, address duplication will occur and correct access will not be possible. Always turn the power on for only one unit at a time. If address duplication occurred, perform the proper processing and wait for 10 min. or more, or turn off the power of all units on the network and then turn the power on again; otherwise, correct access may not be possible.

#### Caution

VN-C3WU unit is intended to be Supplied by a Listed Direct Plug-In Power Unit marked "Class 2" and rated from 11 to 15 V dc, 2 to 2.5 A.

### 3. Alarm IN/OUT connection

Connect external devices to the alarm IN/OUT as shown below.



#### ● Cable connection and disconnection

Press the sensor insert button when connecting and disconnecting cables. After connecting or disconnecting, make sure the sensor insert button returns to its original position.

#### ● About the alarm IN/OUT connection cables

- Length: use cables with a length of 50m or less.
- Recommended model: UL1007, UL1015 or equivalent cable with wire equivalent to AWG #22 - AWG #18.

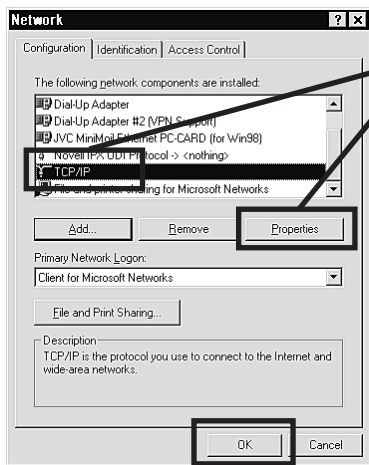
#### Caution

External noise may affect the alarm working properly even with a cable length of 50m or less. In such cases, it is necessary to either change to the use of shielded cable to prevent influence by noise or to change the wiring route to avoid passing close to the source of the noise.

## 4. Setting the VN-C3WU IP address

### 4-1 Changing the IP address of the PC

Display the network settings panel by selecting **Settings** from the **Start button**, then selecting **Control Panel** and **Network**, in that order.

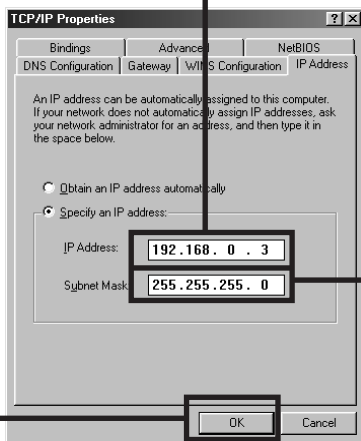


① Select the TCP/IP item, then click on Properties.

② Before making a change, always make a note of the original IP address.  
Change the IP address to **192.168.0.3**.

Set the subnet mask to a value suitable for the setting operation. If the value is unknown, check with the network administrator.

③ Click on OK and then reboot the PC.



---

## About the web pages mentioned in this instruction manual

From the following page, all the screens expressed as VN-C3WU page are contained in VN-C3WU and displayed by the web page browse and display function of the WWW browser software.

Therefore depending on WWW browser software and its settings, the formats and fonts may be different from the screens of VN-C3WU page, in this manual.

In this manual, all the screens of VN-C3WU are displayed by the web page browse and display function of Netscape.



## 4-2 Changing internal settings

Start the WWW browser software.

Specify the factory-set VN-C3WU web page address in the browse location in the WWW browser software. (When the factory-set IP address is specified, the WWW browser software will display the VN-C3WU top page.)

http://192.168.0.2/

### Caution

In some cases, direct specification is not possible when a proxy server has been set for Internet access. In such cases, contact the network administrator and change the setting.

WWW browser software (using Netscape as an example)



Display of the VN-C3WU top page.



VN-C3WU top page.

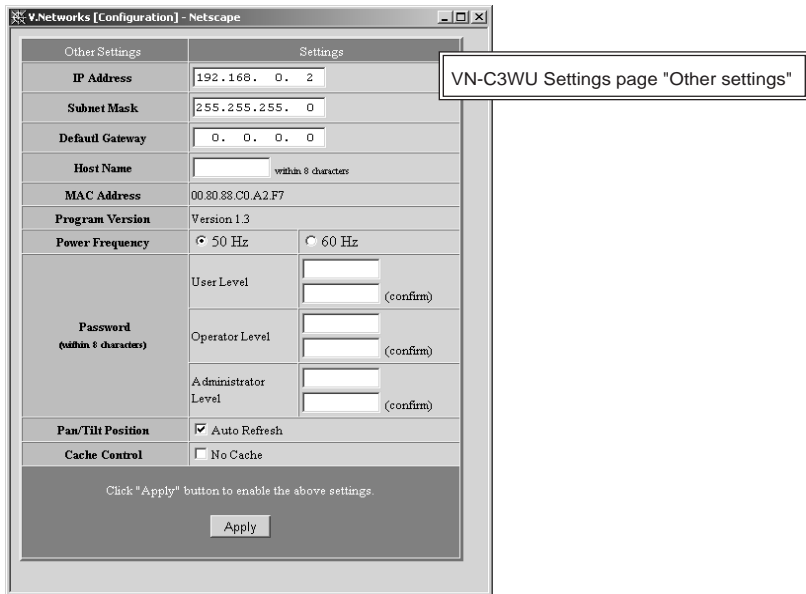
Click on Settings.

The Settings page is displayed.



VN-C3WU Settings page.

Setup is performed by changing the "Other Settings" contents.



#### Other Settings

##### [IP address]

Change to an IP address assigned or approved by the network administrator.

##### [Subnet mask]

Like the IP address, the subnet mask is assigned or approved by the network administrator.

##### [Default Gateway]

Set the default Gateway IP address. 0.0.0.0 means the gateway is not used.

##### [Host name]

- Specify using up to 8 letters. Only in the environment to use DNS (Domain Name System) and make the access link by host name. Except for this environment, do not specify anything.

##### [MAC address]

This is the unique physical address of the product.

※ Cannot be changed.

## Other Settings

### [Program version]

The version of the VN-C3WU main unit firmware.

※ Cannot be changed.

### [Power Frequency]

This setting reduces the amount of flicker under fluorescent lighting. Set to 50Hz or 60Hz in accordance with the power frequency at the installation location.

### [Password]

Specify using up to 8 letters. Enter (re-enter) the same password two times in each level for confirmation purposes.

### [Auto Refresh]

Specify Pan/Tilt position display in the (Control page) and (Configuration page) is automatically refreshed or not.

### [Cache Settings]

Only a few of the proxy servers in Cache Settings cache Cgi; therefore, Pan/Tilt control occasionally does not operate correctly. In such cases, check Cache Disable.

### Password function

An access protection using a password is provided to regulate connecting PCs (users) connected to the VN-C3WU. This access protection function has three levels to match the access levels. The pages that can be accessed at each of these levels are as shown below.

(Refer to page 22 for the VN-C3WU web page configuration.)

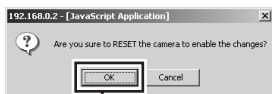
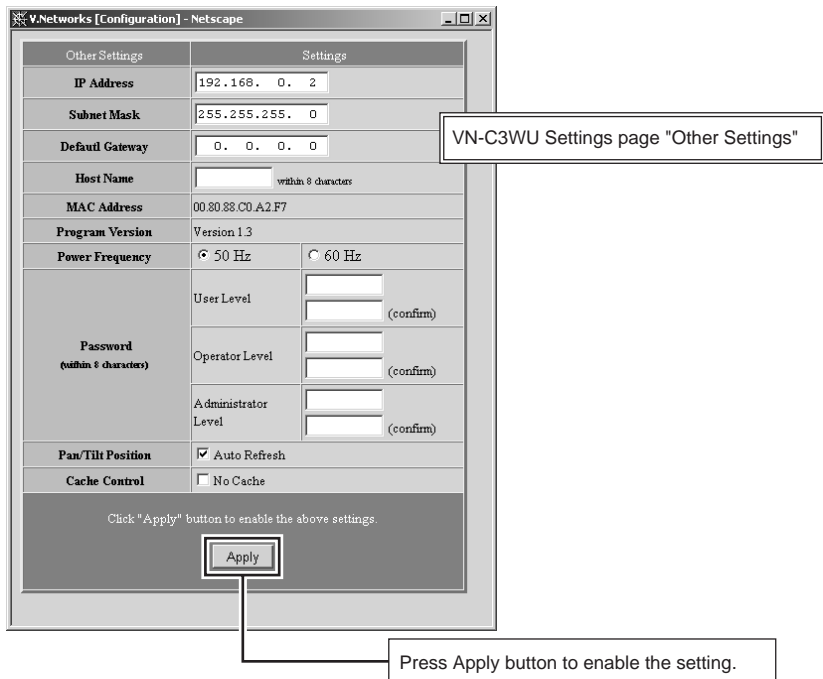
Password level	Accessible page
User level	Still Image page and Live Image page.
Operator level	The above pages and (Pan/Tilt) control page.
Administrator level	The above pages and Settings page.

### Caution

Never forget the current password because the password setting cannot be changed unless it matches the Administrator level password.

### Caution

A password will not be requested when only a user level or operator level password has been set but an administrator level password has not been set.



## Caution

The confirmation screen shown above will appear when the IP address, subnet mask, host name and power frequency settings are changed. When OK is clicked in this confirmation screen, the VN-C3WU main unit internal preset operation will be performed and the IP address, etc., will be changed. The Factory set (Default) IP address of 192.168.0.2 will become invalid, and the connection to the VN-C3WU will be no longer possible. When the WWW browser software is not operated for a certain time, a message indicating that connection is not possible will appear as a result of IP address change.

### 4-3 Restore to the original PC IP address

Using the same procedure as described in item 4-1, select Settings from the Start button, then select Control Panel and Network, in that order. Next, restore to the original IP address and reboot the PC in accordance with the messages.

## 5. VN-C3WU connection test

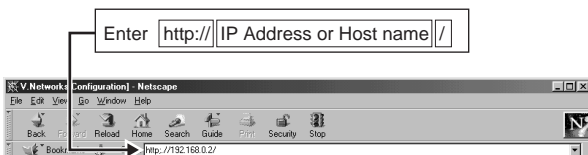
This test confirms whether or not each VN-C3WU web page can be displayed with the WWW browser software using the set IP address or DNS host name.

(Refer to page 24 for the VN-C3WU web page configuration.)

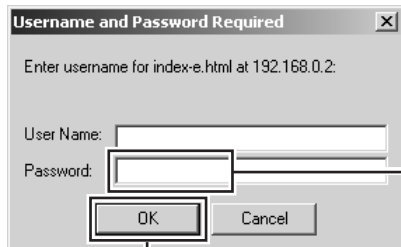
### Caution

In some cases, direct specification is not possible when a proxy server has been set for Internet access. In such cases, contact the network administrator and change the settings.

Also contact the network administrator and make necessary settings regarding DNS address for using DNS.



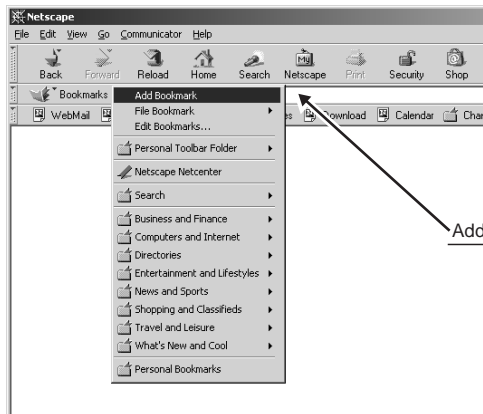
Enter the User Name and Password.



Enter a password.  
It is not necessary to enter a user name.

Click on OK.

In order to assure quick display of the VN-C3WU web page from the WWW browser being used, register a browse location (URL : Uniform Resource Locator) is recommended. Use Bookmarks with Netscape or Favovites with Internet Explorer for this registration.



Addition to Bookmarks (using Netscape).



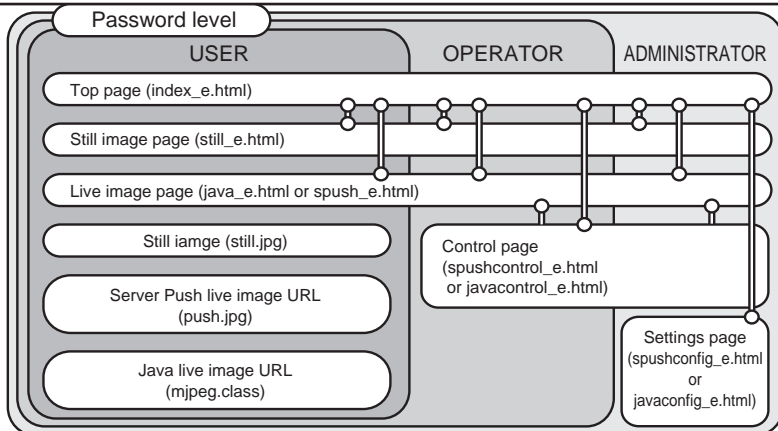
## VN-C3WU/Web page

### Explanation of display items and operations

The following is a diagram of the configuration of the VN-C3WU internal URL (web pages).

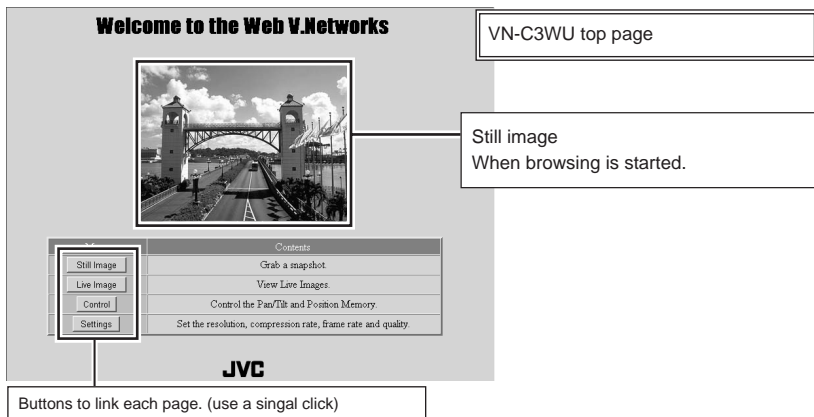
#### Caution

In order to access all the VN-C3WU web pages, the Administrator level password is required.



**Top page:** [http://\\*\\*\\*\\*\\*index\\_e.html](http://*****index_e.html). (\*\*\*\*\* is the URL of the VN-C3WU.)

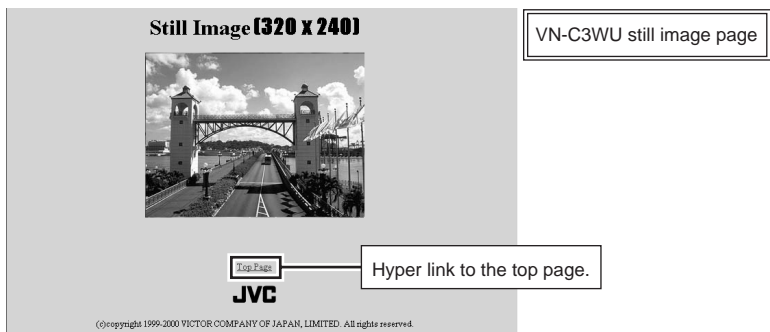
The purpose of this page is to link to each of the VN-C3WU web pages.





## Still image page: [http://\\*\\*\\*\\*\\*still\\_e.html](http://*****still_e.html). (\*\*\*\*\* is the URL of the VN-C3WU)

This page is to display a still image when browsing is started. To update the image, use the Reload or Refresh function of the WWW browser software. To save the image being displayed, use the Save as... function of the WWW browser software.



## Live image page: The URL will be changed automatically by the WWW browser software.

Netscape [http://\\*\\*\\*\\*\\*/spush\\_e.html](http://*****/spush_e.html)

Internet Explorer [http://\\*\\*\\*\\*\\*/jave\\_e.html](http://*****/jave_e.html).

(\*\*\*\*\* is the URL indicated by the VN-C3WU)

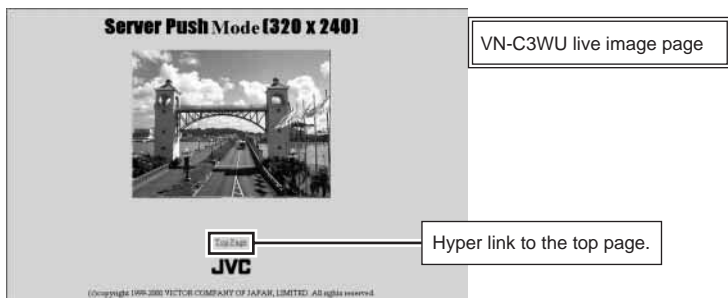
This page is to display live images. The camera images are updated automatically and displayed as live images.

### Caution

The Save as... function of the WWW browser software cannot be used with this page so do not attempt to save. The Save as... function cannot be used for the entire web page so do not attempt to save.

### Caution

Server push images are cached in the browser; therefore, operation of the browser may become sluggish after continuous use for an extended time period. In such cases, set caching by the browser to off.



ve

**Control page:** The URL will be changed automatically by the WWW browser software.

Netscape [http://\\*\\*\\*\\*/spushcontrol\\_e.html](http://****/spushcontrol_e.html)

Internet Explorer [http://\\*\\*\\*\\*/javacontrol\\_e.html](http://****/javacontrol_e.html)

(\*\*\*\* is the URL of the VN-C3WU)

This page is to control Pan/Tilt operations and to operate the position memory.

The images are updated automatically and displayed as live images.

### Caution

Perform the Pan/Tilt operations after all images have been loaded into the web browser.

The screenshot shows a web browser interface for controlling a camera. At the top left, there are two buttons: 'Top Page' and 'Live Image'. The main area features a large 'Live image' of a bridge with two towers. Below the image, a status bar displays 'Current position - Pan:+000 / Tilt:+000 / Zoom:100'. A menu is visible with 'Control' and 'Lens' options. The 'Control' section contains the text 'Control the Pan/Tilt and Position Memory. Set the zoom, focus and iris.' Below this is the 'JVC' logo and a copyright notice: '(c)copyright 1999-2000 VICTOR COMPANY OF JAPAN, LIMITED. All rights reserved.'

Top Page  
Live Image

VN-C3WU control page

Live image

Hyper link to other pages.

Current position - Pan:+000 / Tilt:+000 / Zoom:100

Menu Contents  
Control Control the Pan/Tilt and Position Memory.  
Lens Set the zoom, focus and iris.

JVC

(c)copyright 1999-2000 VICTOR COMPANY OF JAPAN, LIMITED. All rights reserved.

VN-C3WU data display area  
The current Pan/Tilt position is displayed.  
Warning messages for operations are also displayed.

A window is displayed for setting pan, tilt, zoom, position memory shift and position memory.

A window is displayed for setting the iris, focus and zoom.

## Control Window

When the Control Page is opened, the sub-window shown below will be displayed for setting pan, tilt, zoom, position memory shift and position memory.

Menu		Control/Setting	
Pan / Tilt / Zoom	Zoom Step	<input type="text" value="010"/> 1-100	<input type="button" value="Apply"/>
	Pan/Tilt Angle	<input type="text" value="010"/> 1-320(deg)	<input type="button" value="Apply"/>
Position			
Position Setting	Current Setting		
	No. 1	+000(deg)/ +000(deg) / 000	<input type="button" value="Apply"/>
	No. 2	+000(deg)/ +000(deg) / 000	<input type="button" value="Apply"/>
	No. 3	+000(deg)/ +000(deg) / 000	<input type="button" value="Apply"/>
	No. 4	+000(deg)/ +000(deg) / 000	<input type="button" value="Apply"/>
	No. 5	+000(deg)/ +000(deg) / 000	<input type="button" value="Apply"/>
	No. 6	+000(deg)/ +000(deg) / 000	<input type="button" value="Apply"/>
	No. 7	+000(deg)/ +000(deg) / 000	<input type="button" value="Apply"/>
	No. 8	+000(deg)/ +000(deg) / 000	<input type="button" value="Apply"/>
	No. 9	+000(deg)/ +000(deg) / 000	<input type="button" value="Apply"/>
	No. 10	+000(deg)/ +000(deg) / 000	<input type="button" value="Apply"/>

### Caution

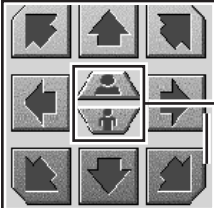
Always perform Pan/Tilt operations after all button images have been read by the browser.

## Pan/Tilt/Zoom control

The current Pan/Tilt angle step and Zoom step are displayed here. Angles (integer value) can be changed by entering value and clicking on the Apply button.

**Pan / Tilt / Zoom**

Zoom Step	<input type="text" value="010"/> 1-100	Apply
Pan/Tilt Angle	<input type="text" value="010"/> 1-320(deg)	Apply



The lens zoom ratio can be changed by using the two operation buttons. The amount of change each time one of the zoom operation buttons is displayed in "zoom" step.

The Pan/Tilt can be controlled with the 8 Pan/Tilt operation buttons.  
The amount of movement for each operation of Pan/Tilt is the above Pan/Tilt angle.

---

## Lens setting window

### Zoom

Operates the zoom.

Zoom-in and zoom-out are performed by changing the value and clicking on the Apply button.

### Focus

Adjusts the focus.

When set to Auto (auto-focus), focus will be adjusted automatically.

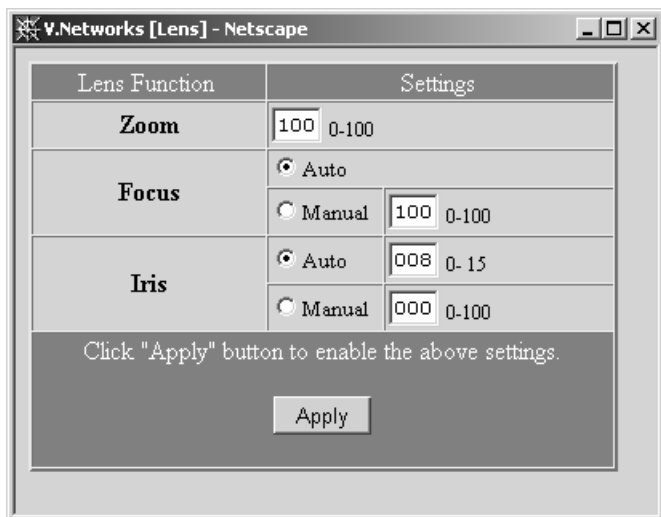
When set to Manual, focus will be manually adjusted.

(The focus position can be set by changing the value on the right and clicking on the Apply button.)

### Iris

When set to Auto, the iris (aperture) will be adjusted automatically in accordance with the subject brightness. Auto iris can be adjusted by changing the value to the right (default value: 8).

When set to Manual, the iris will be adjusted to the specified value, regardless of the subject brightness. (Change the value on the right and click on the Settings button.)



## Position memory movement

The VN-C3WU is equipped with 10 position memories.

VN-C3WU control page (position memory control)



## Position memory setting

The contents of the currently set position memory are displayed.

VN-C3WU control page (position memory setting)

		Current Settings	
Position Setting	No. 1	+000(deg)/ +000(deg) / 000	Apply
	No. 2	+000(deg)/ +000(deg) / 000	Apply
	No. 3	+000(deg)/ +000(deg) / 000	Apply
	No. 4	+000(deg)/ +000(deg) / 000	Apply
	No. 5	+000(deg)/ +000(deg) / 000	Apply
	No. 6	+000(deg)/ +000(deg) / 000	Apply
	No. 7	+000(deg)/ +000(deg) / 000	Apply
	No. 8	+000(deg)/ +000(deg) / 000	Apply
	No. 9	+000(deg)/ +000(deg) / 000	Apply
	No. 10	+000(deg)/ +000(deg) / 000	Apply

The current Pan/Tilt/Zoon position can be set to any of the 10 position memories by clicking on "Apply".

**Settings Page:** The URL will be changed automatically by the WWW browser software.

Netscape [http://\\*\\*\\*\\*\\*/spushconfig\\_e.html](http://*****/spushconfig_e.html)

Internet Explorer [http://\\*\\*\\*\\*\\*/javaconfig\\_e.html](http://*****/javaconfig_e.html).

(\*\*\*\* is the URL of the VN-C3WU)

This page is to make the camera image related settings and connection (setup) related settings.  
(The images are updated automatically and displayed as live images.)

VN-C3WU settings page

Hyper link to other pages

Live image.

Top Page

Live Image

Current position - Pan:+000 / Tilt:+000 / Zoom:100

Menu	Contents
Control	Control the Pan/Tilt and Position Memory.
Image settings	Set the resolution, compression rate, frame rate and quality.
Alarm settings	Set the Alarm input/output.
Other settings	Set the ip address and password.

**JVC**

(c)copyright 1999-2000 VICTOR COMPANY OF JAPAN, LIMITED. All rights reserved.

VN-C3WU data display area  
The current Pan/Tilt/Zoom position is always displayed. Warning messages for the various operations are also displayed.

## Control Window

Refer to the Control Page explanation.

### Image Quality Settings Window

Camera	Setting
<b>Auto/Manual</b>	Auto <input type="button" value="Apply"/>

Camera auto/manual setting.

Image	Setting
<b>Resolution</b>	320 x 240
<b>Compression Rate</b>	Middle
<b>Frame Rate</b>	30 fps
<b>Quality</b>	Saturation <input type="text" value="031"/> 0-100
	Color Balance <input type="text" value="050"/> 0-100
	Brightness <input type="text" value="***"/> 0-100
	Contrast <input type="text" value="***"/> 0-100
	Gain <input type="text" value="***"/> 0-100
Click "Apply" button to enable the above settings.	
<input type="button" value="Apply"/>	

Image quality related menu

<input type="button" value="Default"/>
--



## Camera Auto/Manual Settings

VN-C3WU settings page  
(Auto/manual settings)

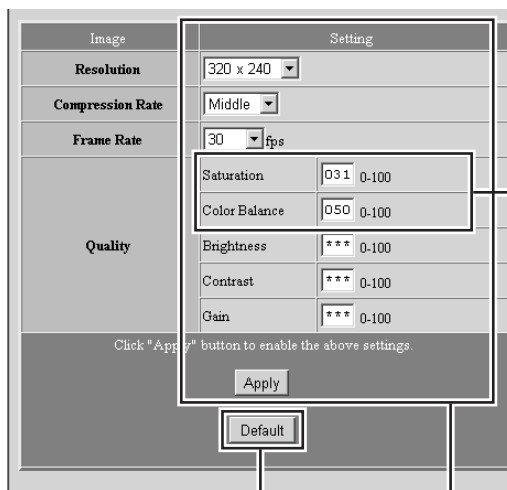


Manual : "Quality" in "Image Quality Setting" such as Saturation and Color Balance can be manually set.

Auto : "Quality" in "Image Quality Setting" can be automatically set.  
Select Auto or Manual depending on operational environment.  
Click Apply after selecting Auto or Manual.

## Image Quality Setting

VN-C3WU settings page  
(Image Quality setting)



Also effective when  
Auto is set.

Clicking Default returns all of the settings to the factory set values (Default values).

After making each setting, click Apply to change the VN-C3WU internal settings.

---

## Image Quality menu

### [Resolution]

Three different image sizes are available: 640 x 480, 320 x 240 and 160 x 120.

### [Compression Rate]

The compression ratio has an inversely proportional relationship to image quality but increasing the compression ratio increases the number of frames that can be displayed per second.

Compression ratio	Low	Medium	High
Image quality	High	Medium	Low
No. of frames	Low	Medium	High

### [Frame Rate]

Frame rate sets the upper limit for the number of image frames sent from the VN-C3WU per second.

(fps is the abbreviation for frames per second)

### [Frame Rate]

Frame rate sets the upper limit for the number of image frames sent from the VN-C3WU per second.

(fps is the abbreviation for frames per second)

#### **Caution**

If the frame rate is not set to 1fps or less in the band below 10Mbps, the pan/tilt operations may not be possible from the control page in some cases. (ISDN 64k, 128k, analog 56k, etc., are pertinent.)

#### **Caution**

The number of frames actually sent and displayed per second depends on the performance of the personal computer and WWW browser software, and on the LAN environment, etc. When communication interference from processing being performed by other users is anticipated (especially in environments where the load on the network is relatively heavy), it is advisable to set a low value for the frame rate.

### Quality

Image Sensor can be used when Camera Auto/Manual Setting is set to Manual. (Excluding the "Saturation" and the "Color Balance".)

Images can be adjusted by changing the detail items.

Item	Effect
Saturation	Adjustment of the color saturation. Also effective when Auto is set. (The larger the setting value, the greater the color saturation.)
Color Balance	Move the slide Adjustment of the tone. Also effective when Auto is set. (50 is the median value. Decreasing the settingvalue emphasizes red and increasing the settingvalue emphasizes blue.)
Brightness	This the Auto/Adjustment of the image brightness. (The larger the setting value, the greater the brightness.)
Contrast	Adjustment of the contrast. (The larger the setting value, the stronger the contrast.)
Gain	Adjustment of the gain of the internal amp. (Increase the setting value when light is insufficient.)

### [Other Settings]

Other Settings	Settings
IP Address	192.168. 0. 2
Subnet Mask	255.255.255. 0
Default Gateway	0. 0. 0. 0
Host Name	<input type="text"/> within 8 characters
MAC Address	00.80.38.C0.A2.F7
Program Version	Version 1.3
Power Frequency	<input checked="" type="radio"/> 50 Hz <input type="radio"/> 60 Hz
Password (within 8 characters)	User Level <input type="password"/> * <input type="password"/> (confirm)
	Operator Level <input type="password"/> * <input type="password"/> (confirm)
	Administrator Level <input type="password"/> * <input type="password"/> (confirm)
Pan/Tilt Position	<input checked="" type="checkbox"/> Auto Refresh
Cache Control	<input type="checkbox"/> No Cache
Click "Apply" button to enable the above settings.	
<input type="button" value="Apply"/>	

VN-C3WU settings page  
(Other Settings)

Most of the items are set during installation and setup. Refer to page 19 for details.

## Alarm Settings Window

Sets the VN-C3WU operation when an alarm signal is input.

The screenshot shows a window titled "V.Networks [Alarm] - Netscape" with a standard Windows-style title bar. The window contains a table with columns "Alarm Type", "On/Off", and "Settings".

Alarm Type	On/Off	Settings
Alarm In	Alarm 1 <input checked="" type="radio"/> On <input type="radio"/> Off	Go to a Preset Position: Position 1
		Alarm Out: Yes
	Alarm 2 <input checked="" type="radio"/> On <input type="radio"/> Off	Go to a Preset Position: Position 3
		Alarm Out: Yes
	Relay Alarm <input checked="" type="radio"/> On <input type="radio"/> Off	Alarm 1 triggered prior to another within 00 min 10 s. (1s - 59min 59s)
		Go to a Preset Position: Position 5
Alarm Out: Yes		
Alarm Out <input checked="" type="radio"/> On <input type="radio"/> Off	Momentum: 0100 msec (1-5000)	
	Value: <input checked="" type="radio"/> High <input type="radio"/> Low	
	Power on Init: Yes	

Click "Apply" button to enable the above settings.

Apply

### Alarm 1/2 Input

On/Off ----- Set to On when the alarm input jack (alarm 1/2) is to be used; set to Off when the alarm jack not to be used.

Setting ----- The position memory shift and alarm output to the position memory can be set when an alarm is input.

#### - Shift to a specified position

Sets position memories 1 - 10 set from the Control Page.

When an alarm is input, a shift is made to the specified position.

#### - Alarm output

When an alarm is input while set to Yes, the signal set with Output Alarm will be output from the Alarm Out jack.

---

## Relay Alarm Input

The input of an alarm a few seconds after a previous alarm has been input can be set separately as a relay alarm.

## Alarm Out

On/Off ----- Set to On when alarm output is to be used; set to Off when alarm output is not to be used.

Setting Items ---- Sets the signal to be output from the Alarm Output jack.

- Momentum output

Sets the time during which alarm output is to continue.

- Output value

Sets either the High signal or Low signal as the alarm output.

- Initial output at power on

Sets whether or not to output an alarm signal one time from the VN-C3WU alarm output when the power is turned on,

※ Set the output in accordance with the device which will receive the alarm.

※ After setting the alarm, always make sure that alarm operation is normal.



## How to link the VN-C3WU images

The still or live images of VN-C3WU can be pasted and displayed in a separate web page you have created.

### Displaying still image:

A still image can be displayed by creating a web page with the contents described below.

```
<IMG SRC="http:// ***** /still.jpg">
```

\*\*\*\*\* shows the URL indicated by the VN-C3WU.

### Displaying live images:

Two methods can be used for live images: the Serverpush method and the Java method.

It is necessary to use one of these methods in accordance with the WWW browser software compatibility.

#### Displaying with Serverpush

Live images can be displayed with Serverpush-compatible WWW browser software (Netscape) by creating a web page with the contents described below.

```
<IMG SRC="http:// ***** /push.jpg">
```

\*\*\*\*\* indicates the VN-C3WU IP address.

---

## Displaying with Java

Live images can be displayed with Java-compatible WWW browser software (Internet Explorer, etc.) by creating a web page with the contents described below.

```
<APPLET CODE="mjpeg.class"WIDTH=640 HEIGHT=480  
CodeBase=http:// *****/"></APPLET>
```

\*\*\*\* indicates the VU-C3WU IP address.

### Caution

The resolution, compression rate, etc., of both the still and live images browsed and displayed (in a separate web page are) in accordance with the previously set setting values.

Also, correct display may not be possible if Java execution is disabled with the WWW browser software.

### Caution

When a password has been set, animated images cannot be displayed with JAVA without prior confirmation.

### Caution

Set "Width" and "Height" to the same values used for the resolution of VN-C3WU



## Troubleshooting

<p>The IP address to which the VN-C3WU was changed has been forgotten.</p>	<p>Unknown IP addresses are handled as repairs. Please consult your local dealer.</p>
<p>The password protection was set but the password was forgotten.</p>	<p>Disabling of the password protection function is handled as a repair. Please consult your local dealer. Be prepared to show proper identification for safety purposes.</p>
<p>Color balance is unsatisfactory.</p>	<ul style="list-style-type: none"><li>• Check the display and video card color adjustments. Color balance will vary slightly, depending on the personal computer, video card and monitor display used. Improvement is sometimes possible by adjusting the color settings of the monitor display. Also, depending on the video card used, the colors can sometimes be adjusted by right clicking the mouse on the desktop to access "Screen Properties."</li><li>• Color balance is sometimes unnatural when a True Color (24-bit) display is switched to High Color (16-bit). The use of True Color is recommended.</li><li>• Adjust Color Balance. Color balance can be adjusted by using the Color Balance item in the Image Menu in the VN-C3WU Settings page.</li></ul> <p>(Cont'd on the next page.)</p>

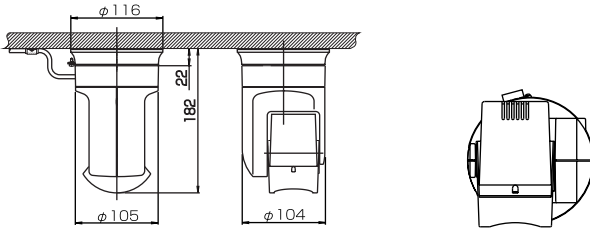


<p>Color balance is unsatisfactory.</p>	<ul style="list-style-type: none"> <li>• Try changing the Camera Auto/Manual setting in the VN-C3WU Settings Page from Auto to Manual, and then back to Auto again.</li> </ul> <p>When changing between scenes with different light sources (for example, when moving from outdoors with sunlight to indoors with fluorescent lighting), there may be a slight delay before the automatic tracking white balance function starts to operate.</p> <p>Depending on the subject, the color balance may appear to change slightly. This is not a malfunction.</p> <p>This product uses auto white balance. When most of a subject is red, blue-green areas may appear bluish; blue areas may appear orange; and yellow areas may appear blue-purple. In such cases, use the color balance image quality setting to adjust the color matching.</p>
<p>Image size and position change spontaneously.</p>	<p>This sometimes appears to be the case when multiple operators and administrators have access to one VN-C3WU unit and change the settings because the last settings made will still be in effect for the next user.</p>
<p>Focus is not accurate.</p>	<p>The autofocus may not be accurate in dark places and in locations without features, such as a wall, etc. In such cases, adjust the focus manually.</p> <p>Focus may be slightly off when adjusted manually at the TELE setting. This is not a malfunction.</p> <p>Due to its principle of operation, autofocus is difficult with striped subjects.</p>

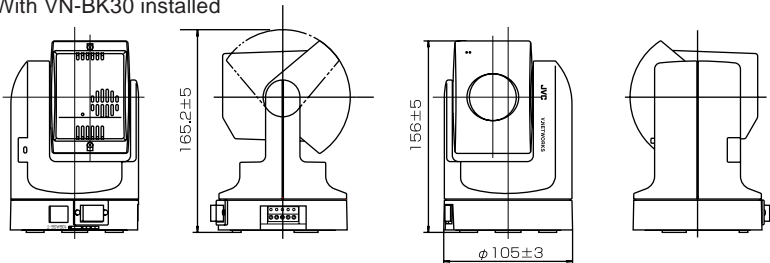
# Specifications

LAN standard	IEEE 802.3
Communication protocol	TCP/IP, HTTP
Video element	1/3-inch, 300,000-pixel CMOS image sensor.
Minimum focusing distance	1.0m
Pan/tilt operation angle	Pan: 320° Tilt: 90°
Output image format	640 × 480, 320 × 240, 160 × 120
Power supply voltage	DC 12V
Power consumption	2.0A (max.)
Operating temperature	0°C — 40°C
Mass (weight)	Approx. 730g.
Alarm input	Non-voltage a contact input Low level. latch/momentary (500ms or more) Low level circuit current 1mA High level impressed voltage 5V
Alarm output	NPN open collector output (allowable impressed voltage: 12V; allowable input current: 300mA)

## External dimensions (Unit: mm)



※ With VN-BK30 installed







## Free Manuals Download Website

<http://myh66.com>

<http://usermanuals.us>

<http://www.somanuals.com>

<http://www.4manuals.cc>

<http://www.manual-lib.com>

<http://www.404manual.com>

<http://www.luxmanual.com>

<http://aubethermostatmanual.com>

Golf course search by state

<http://golfingnear.com>

Email search by domain

<http://emailbydomain.com>

Auto manuals search

<http://auto.somanuals.com>

TV manuals search

<http://tv.somanuals.com>