



POWERED WOOFER CD SYSTEM RV-NB70B/RV-NB70S

Thank you for purchasing a JVC product. Before operation, please read the instructions carefully.



INSTRUCTIONS

LVT2225-001C1(B/E/A)
1210TMMMDWBET
EN

For customer use:

Enter below the Model No. and Serial No. which are located either on the rear, bottom or side of the cabinet. Retain this information for future reference.
Model No. _____
Serial No. _____

Auto power save function

If no operation is performed for 30 minutes in the following situations, the unit turns off automatically.

- CD or USB is selected, and playback is stopped.
- iPod is selected, and iPod is not connected.
- The volume level is set to MIN or Muting is activated.

Before the unit turns off, "APS" blinks on the

Caution: Proper Ventilation

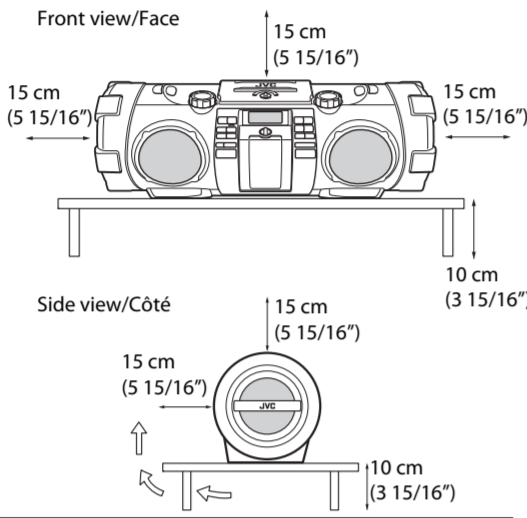
To avoid risk of electric shock and fire, and to prevent damage, locate the apparatus as follows:

- 1 Front:
 - No obstructions and open spacing.
- 2 Sides/ Top/ Back:
 - No obstructions should be placed in the areas shown by the dimensions below.
- 3 Bottom:
 - Place on the level surface. Maintain an adequate air path for ventilation by placing on a stand with a height of 10 cm (3 15/16") or more.

Attention: Aération correcte

Pour prévenir tout risque de décharge électrique ou d'incendie et éviter toute détérioration, installez l'appareil de la manière suivante:

- 1 Avant:
 - Bien dégagé de tout objet.
- 2 Côtés/dessus/dessous:
 - Assurez-vous que rien ne bloque les espaces indiqués sur le schéma ci-dessous.
- 3 Dessous:
 - Posez l'appareil sur une surface plane et horizontale. Veillez à ce que sa ventilation correcte puisse se faire en le plaçant sur un support d'au moins dix centimètres de hauteur.



Auto power save function

display.

- However, this function does not work in the following situations:
- A microphone or guitar is connected.

ABOUT DISC/FILE/iPod/DISPLAY

- In this manual, "iPod" means iPod, iPod touch and iPhone device. When iPod touch or iPhone device is especially referred to, "iPod touch" or "iPhone" is used.
- In this manual, "file" and "track" are used interchangeably.

Playable discs/files

| | |
|-------|---|
| Discs | CDs with one of the marks below on the surface. |
| Files | Files in audio CD format, MP3/WMA files on a finalized CD-R or CD-RW. MP3/WMA files in a USB device can also be played. |

- MP3/WMA discs require a longer readout time than regular CDs. (It depends on the complexity of the folder/file configuration.)
- Some MP3/WMA files cannot be played back and will be skipped. This results from their recording processes and conditions.
- When making MP3/WMA discs, use ISO 9660 Level 1 for the disc format.
- This unit can play back MP3/WMA files with the extension code <.mp3> or <.wma> (regardless of the letter case—upper/lower).
- This system can play back MP3/WMA recorded at the following sampling frequency and bitrate.
Bitrate: MP3 32 – 320 kbps
WMA 48 – 192 kbps
Sampling frequency: 32 / 44.1 / 48 kHz
- This unit cannot play "packet write" discs.
- This unit cannot show the Tag data of MP3/WMA.
- If a CD-RW has been recorded in a different format, erase all data on the CD-RW completely before recording on it.

- This unit can recognize up to a total of 511 tracks and folders on a disc, and 65536 files in up to 200 groups (maximum 500 files in a single group) on a USB device.
- The reflection factor of CD-RW is lower than that of other CDs, possibly causing CD-RW to take longer time to read.

Important for USB mass storage class device

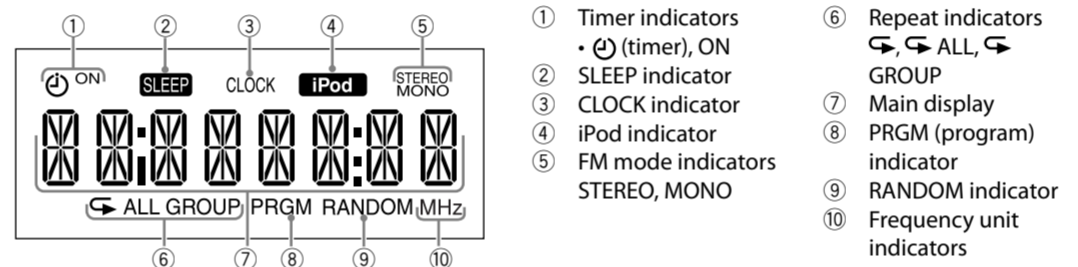
For connecting/disconnecting:

- USB Memory and DAPs compatible with the USB mass storage class specifications are connectable.
- Always set the volume to the minimum level when connecting or disconnecting a USB device.
- When connecting with a USB cable, use the USB 2.0 cable less than 1 m (3.28 ft) in length.
- You cannot connect a computer to the USB MEMORY terminal of the unit.
- Do not use a USB hub.
- When the power is supplied through the AC outlet and USB is selected as the source, the USB device is charged through the USB MEMORY terminal, however some USB devices may not be charged.
- Deactivate the security function of the USB mass storage class device before connecting.
- When connecting a USB device, refer also to its manual.
- You can play back MP3/WMA files on a USB device (maximum data transfer rate: 2 Mbps). This unit may not play back some files even though their formats are listed above.
- The playing order of MP3/WMA files
 - in groups depends on in creation order. In a group, tracks are played in recording order.
 - may differ depending on the recording condition.
 - may change if you change the folder name or file name.
- While playing back a file in a USB device, do not disconnect the USB device. It may cause malfunction of both this unit and the device.
- This unit is compatible with USB 2.0 Full Speed.
- You cannot play back a file larger than 2 Gigabytes.

- It is recommended to use the USB mass storage class device of 4 Gigabytes or less storage capacity.
- When playing a file of a large transfer rate, sounds may be dropped during playback.
- This unit cannot recognize a USB mass storage class device whose rating exceeds 5V/500 mA.
- If your USB device is partitioned, only the first partition is recognized.
- You cannot send any data to your USB device from this unit.
- Some USB devices may not be recognized or may not work properly.
- Some DAPs are not compatible with the unit.
- Copyrighted tracks (WMA-DRM tracks) cannot be played back on the unit.
- Coded or encrypted tracks in a special method cannot be played on the unit.
- Electrostatic shock at connecting a USB device may cause abnormal playback of the device. In this case, disconnect the USB device then reset this unit and the USB device.
- JVC bears no responsibility for any loss of data in the USB mass storage class device while using this unit.

- Microsoft and Windows Media are either registered trademarks or trademarks of Microsoft Corporation in the United States and/or other countries.

Display



Important for iPod devices

• Compatible iPod:

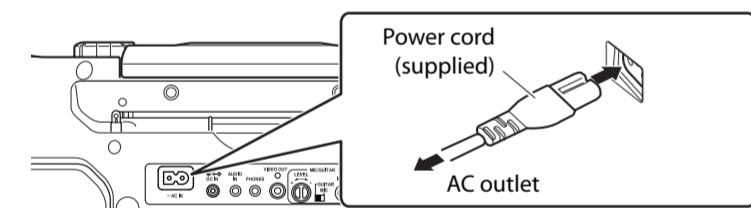
| Made for | Audio | Video |
|-----------------------------|-------|---------|
| iPod nano (6th generation) | ✓ | ✓*1 |
| iPod nano (5th generation) | ✓ | ✓ |
| iPod nano (4th generation) | ✓ | ✓ |
| iPod nano (3rd generation) | ✓ | ✓ |
| iPod nano (2nd generation) | ✓ | – |
| iPod nano | ✓ | – |
| iPod touch (4th generation) | ✓ | ✓ |
| iPod touch (3rd generation) | ✓ | ✓ |
| iPod touch (2nd generation) | ✓ | ✓ |
| iPod touch | ✓ | ✓ |
| iPod classic | ✓ | ✓ |
| iPod video (5th generation) | ✓ | ✓ |
| iPod photo (4th generation) | ✓ | ✓*1, *2 |
| iPod (4th generation) | ✓ | – |
| iPod mini (2nd generation) | ✓ | – |
| iPod mini | ✓ | – |
| iPhone 4 | ✓ | ✓ |
| iPhone 3GS | ✓ | ✓ |
| iPhone 3G | ✓ | ✓ |

- *1 Only for still picture
- *2 Viewable only on the screen of iPod

- Sound distortion may occur when playing back audio sources with high recording levels. When distortion occurs, it is recommended to turn off the equalizer of iPod. For information on operating iPod, see the iPod instruction manual.
- If iPod does not play correctly, update iPod software to the latest version.

PREPARATION

Connecting the power cord



Battery compartment

NOTE

- The power can also be supplied through the batteries (see the instruction below).
- A small amount of power is always consumed even while on standby.

CAUTION

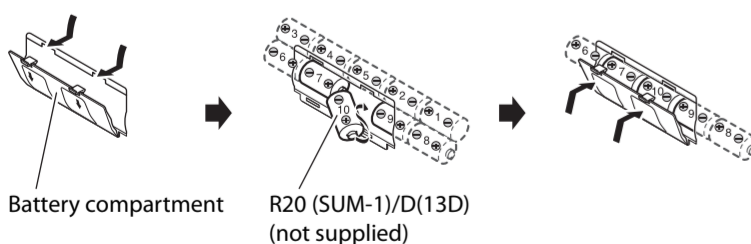
- Only use JVC power cord provided for this unit to avoid malfunction or damage to the unit.
- Remove all the batteries when using the power cord.
- Be sure to unplug the power cord from the outlet when going out or when the unit is not in use for an extended period of time.

Unplug the AC power cord from the unit to supply the power through the batteries in the battery compartment; otherwise, the unit does not work.

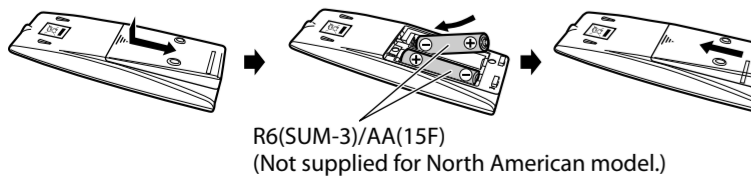
Inserting batteries

Match the polarities (+ and -) of the batteries.

Main unit



Remote control



NOTE

- The power will not be supplied through the batteries when the power is supplied through the AC outlet on the unit.
- The battery is consumed more quickly than usual when operating the unit continuously or operating in a cold place.
- When the power is supplied using the batteries, the display will be blank when the unit is turned off (at standby).
- When the power is supplied using the batteries, the unit is turned on by pressing ⏻ or source buttons on the main unit.

CAUTION

- To avoid battery leakage or explosion, handle batteries properly.
- If you are not going to use this unit for a month or more, remove the batteries from the battery compartment.
 - Dispose of batteries in the proper manner, according to federal, state, and local regulations.
 - Do not mix with batteries of different types or with new and old ones.
 - Do not attempt to charge any batteries other than rechargeable ones.
 - Discard leaky batteries immediately. Battery leakage can cause skin burns or other personal injuries.
 - If chemicals leak onto the unit, clean the unit completely.

- If the range or effectiveness of the remote control decreases, replace the batteries.

REFERENCES

To get the best performance of the unit, keep your discs and mechanism clean.

Maintenance

Handling discs

- Remove the disc from its case by holding it at the edge while pressing the center hole lightly.
- Do not touch the shiny surface of the disc, or bend the disc.
- Put the disc back in its case after use.
- Be careful not to scratch the surface of the disc when placing it back in its case.
- Avoid exposure to direct sunlight, temperature extremes, and moisture.

Cleaning discs

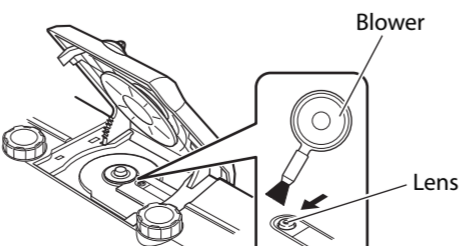
Wipe the disc with a soft cloth in a straight line from center to edge.

Cleaning the unit

- Stains should be wiped off with a soft cloth. If the unit is heavily stained, wipe it with a cloth soaked in water-diluted neutral detergent and wrung well, then wipe clean with a dry cloth.
- Since the unit may deteriorate in quality, become damaged or get its paint peeled off, be careful about the following:
 - DO NOT wipe it hard.
 - DO NOT wipe it with thinner or benzine.
 - DO NOT apply any volatile substance such as insecticides to it.
 - DO NOT allow any rubber or plastic to remain in contact for a long time.

Cleaning the CD pickup lens

Keep the CD pickup lens clean, or the sound may be degraded. Use a blower (available at a camera store, etc.) to blow dust off the lens.



Troubleshooting

If you are having a problem with your unit, check this list for a possible solution before calling for service.

General

Power does not come on.

- ➔ No power is supplied. Check the power cord connection or change the batteries.

The unit turns off automatically.

- ➔ Auto power save function works.

Adjustments or settings are suddenly canceled before you finish.

- ➔ There is a time limit. Repeat the procedure again.

Unable to operate the unit or the unit does not work properly.

- ➔ The built-in microprocessor may malfunction due to external electrical interference. Unplug the power cord, then plug it back in.
- ➔ Batteries are exhausted. Change the batteries.

Unable to operate the unit from the remote control.

- ➔ The path between the remote control and the remote sensor on the unit is blocked.
- ➔ The batteries are exhausted.

No sound is heard.

- ➔ Headphones are connected.

While the power is supplied using the batteries, sound from the speakers is distorted or too quiet.

- ➔ Batteries are exhausted. Change the batteries.

Disc/USB Mass Storage Class Device Operations

The disc/USB device does not play.

- ➔ The disc is placed upside down. Place the disc with the label side up.
- ➔ The disc is recorded with the "packet writing" (UDF file unit)." It cannot be played. Check the files you want to play back.
- ➔ The USB device is not connected properly.

MP3/WMA groups and tracks are not played back as you expect.

- ➔ Playing order is determined when the groups and tracks were recorded. It depends on the writing application.

The disc/USB device sound is discontinuous.

- ➔ The disc is scratched or dirty.
- ➔ MP3/WMA files have not been properly copied onto the USB device.

Sounds from USB device are interrupted.

- ➔ Noise and static electricity may stop the sound. In this case, disconnect and connect the USB device again after turning off the unit.

iPod Operations

iPod does not play, but "CONNECT" appears on the display.

- ➔ The iPod battery is low or exhausted. Charge the iPod battery.

Radio Operations

Hard to listen to broadcasts because of noise.

- ➔ The FM antenna is not properly extended and positioned.
- ➔ Electrostatic discharge from your body may cause noise. If this happens, turn off and on the unit again.

Timer Operations

Daily Timer does not work.

- ➔ The unit has been turned on when the on-time comes. Timer starts working only when the unit is turned off.

SPECIFICATIONS

| Disc player | | Output terminal: | |
|---------------------------------------|---|----------------------------|---|
| CD capacity: | 1CD | • PHONES | φ3.5 |
| Signal-to-noise ratio: | 85 dB | | 32 Ω - 1 kΩ |
| Dynamic range: | 90 dB | | 15 mW / ch output into 32 Ω |
| Tuner | | • VIDEO OUT (For iPod): | Composite |
| FM tuning range: | 87.50 MHz – 108.00 MHz | Power supply: | |
| Antenna: | FM telescopic antenna | • AC | For North American model AC 120 V ~, 60 Hz For European model AC 230 V ~, 50 Hz For Australian model AC 240 V ~, 50 Hz |
| General | | | |
| Speakers: | | • DC | For North American model AC 120 V ~, 60 Hz For European model AC 230 V ~, 50 Hz For Australian model AC 240 V ~, 50 Hz |
| • Full range: | 8 cm (3 3/16") cone x 2 | Power consumption: | When using AC outlet 28 W (at operation) Less than 1.00 W (on standby) |
| | Speaker impedance: 16 Ω | | |
| • Super woofer: | 13 cm (5 1/8") cone x 2 | Dimensions: | When using DC IN 2 A (power on mode) 666 mm (26 1/4") x 231 mm (9 1/8") x 240 mm (9 1/2") (W/H/D) |
| | Speaker impedance: 7 Ω | Mass: | Approx. 6.8 kg (15.0 lbs) (without batteries stored in the battery compartment) |
| Output power: | 40 W | Accessories provided: | Power cord x 1 Remote control x 1 Shoulder belt x 1 Buckle x 2 Stopper x 2 Batteries* (for the remote control) x 2 |
| Input terminal: | | | |
| • USB MEMORY: | Playable files: MP3, WMA | | |
| | • Compatible device: Mass storage class | | |
| | • Compatible system: FAT16, FAT32 | | |
| | • Output power: DC 5 V = 500 mA | | |
| | DC 5 V = 1 A | | |
| • Dock for iPod: | φ3.5 | | |
| • AUDIO IN: | • LEVEL 1: 500 mV / 47 kΩ | | |
| Input Sensitivity / Impedance (1 kHz) | • LEVEL 2: 250 mV / 47 kΩ | | |
| | • LEVEL 3: 125 mV / 47 kΩ | | |
| | Switchable | | |
| • MIC/GUITAR: | • MIC: 200 Ω - 2 kΩ (φ6.3) | | |
| | • GUITAR: 100 kΩ - 1 MΩ (φ6.3) | | |
| | DC 12 V, 2 A | | |

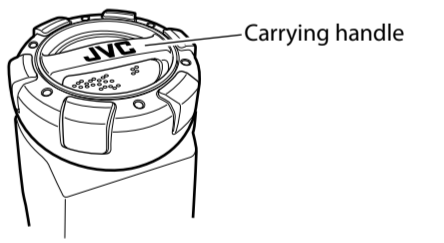
CARRYING THIS UNIT

Using the carrying handles

Be sure to hold both handles when you carry the unit. If you carry the unit by only one handle, because of the length of the unit, the other end may drag on the ground and be damaged as a result. Do not insert any foreign objects into them which are below the speakers.

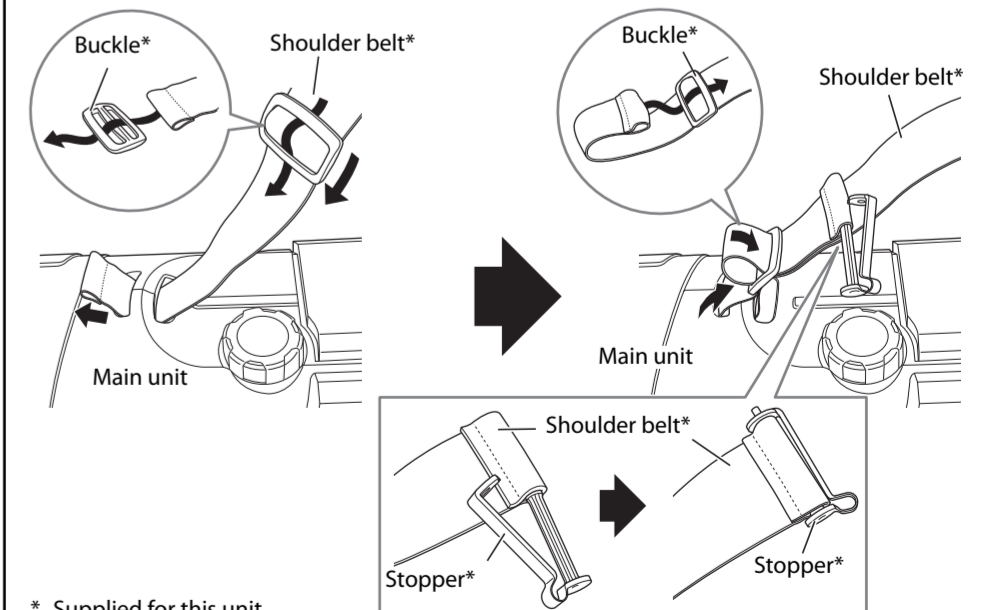
NOTE

- Remove a disc, USB device or iPod from the unit.
- Disconnect all the cords from the unit.
- The unit is not waterproof or dust proof.



Using the shoulder belt

Attach the supplied shoulder belt (adjustable in length) to each end of the unit as illustrated.



* Supplied for this unit.

• "Made for iPod" and "Made for iPhone" mean that an electronic accessory has been designed to connect specifically to iPod or iPhone, respectively, and has been certified by the developer to meet Apple performance standards. Apple is not responsible for the operation of this device or its compliance with safety and regulatory standards. Please note that the use of this accessory with iPod or iPhone may affect wireless performance.

• iPhone, iPod, iPod classic, iPod nano and iPod touch are trademarks of Apple Inc., registered in the U.S. and other countries.

A Listening to iPod and viewing video/picture from iPod

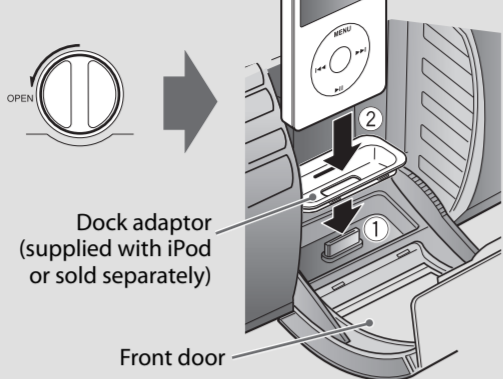
You can operate iPod through the unit.
 Before connecting iPod to the unit, check its type and software version. (See playable iPod devices on the other side of this sheet.)
 Note that any data cannot be sent to iPod from the unit.

CAUTIONS

- JVC is not responsible for any loss of or damage to iPod that might result from the use of this product.
- When you connect iPod to the unit, make sure the connection on this unit is fully inserted into iPod.
- Do not carry the unit with iPod connected. You might drop it down or it might cause damages to the connector part.
- Do not touch or hit the iPod terminal pins or the connector pins directly. It might cause damages to the connector part.
- Remove iPod from the unit when you do not use.
- While playing back a track from iPod, do not disconnect the iPod. Doing so may cause malfunction of both this unit and iPod.
- Always set the volume to the minimum level when connecting or disconnecting iPod.

Connect iPod

Open the front door



To detach the dock adaptor

Pull up the dock adaptor with your fingernail or sharp pointed tool inserted to the slot.
 Be careful not to injure your fingertips or damage the terminal of the dock.



Viewing video/picture

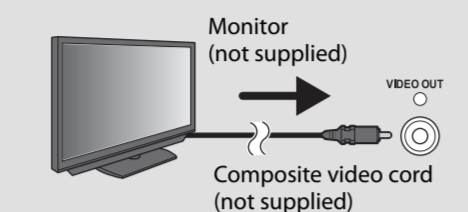
While the unit is turned off, and iPod is not connected...

Press and hold iPod >II<



Each time you press and hold the button, the indicator changes alternately as follows:

- VOUT ON: View video/picture from iPod on the monitor.
- VOUT OFF: View video/picture on iPod.



Start Playback

1. Press iPod >II<

- iPod is turned on and starts playing.
- When you have selected another source press iPod >II< again to start playback.



2. Adjust the volume.

To pause, press iPod >II<

- To cancel pause, press iPod >II< again. Playback continues from the point where it has been paused.

To select a track, press << or >>.



- Press >>> once to skip to the beginning of the next track.
- Press <<< to skip to the beginning of the track being played. Press <<<< twice quickly to skip to the beginning of the previous track.

To fast forward/reverse, press and hold <<<< or >>>> during playback.

NOTE

- With iPod selected as the source...
 - "CONNECT" appears on the display of the unit when iPod is connected.
 - "NOiPod" appears on the display of the unit when iPod is not connected.
 - Operate iPod touch or iPhone itself in the following cases:
 - When operating the home button.
 - When selecting application icons on the home screen.
 - When dragging the slider.

iPod menu operation (Remote control only)

- Press MENU to display the menu.
- Press GROUP UP or GROUP DOWN to select a menu item, then press SET to confirm it.

Refer also to the instruction manual for iPod for details.

Turning off iPod

- Press and hold iPod >II< for about 2 seconds.
- Selecting another source also turns off iPod.
- Turning off the unit may not turn off iPod depending on the current source.

About the battery charge of iPod

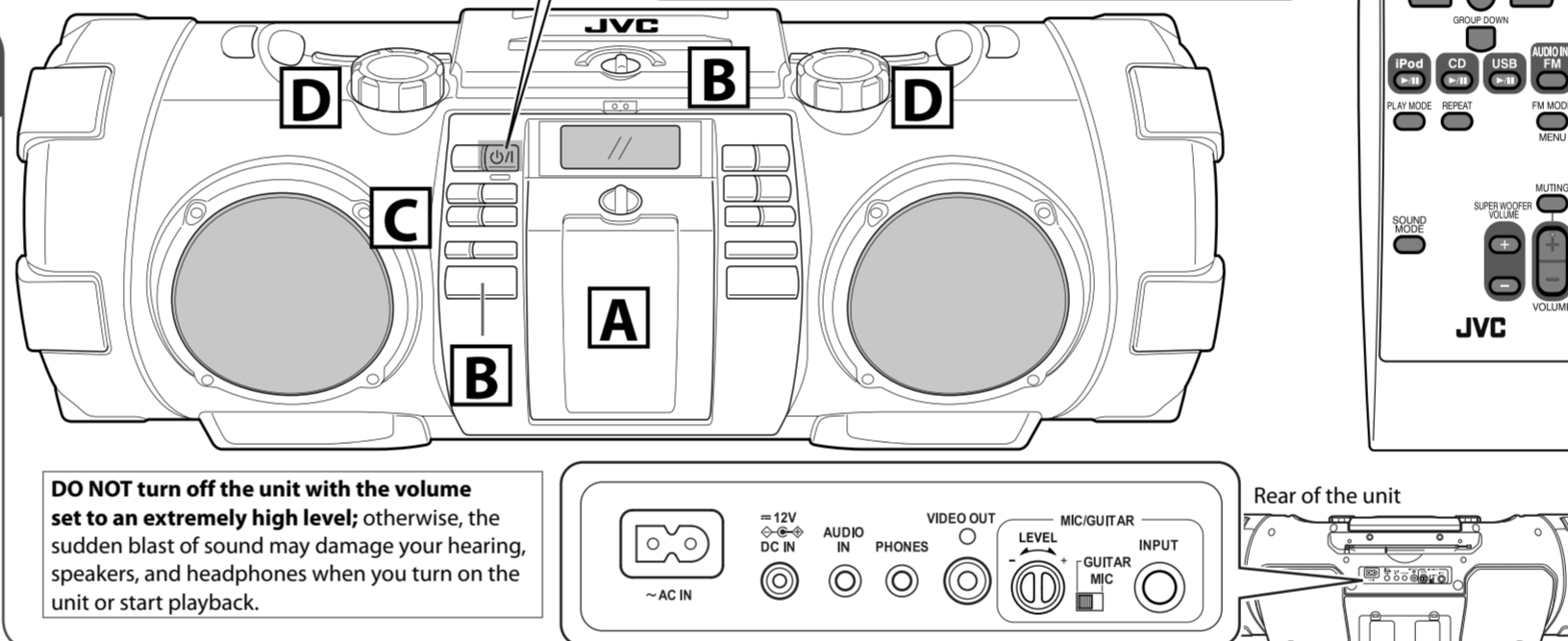
- When the unit is connected to the AC outlet: **The iPod battery is charged if the unit is turned on.**
- When the unit is operated on batteries: **The iPod battery is not charged even if the unit is turned on.**

B Turn on the power at first.

How to select a number using the remote control

Examples:

- To select number 5, press 5.
- To select number 15, press +10 then 5.
- To select number 20, press +10 once, then 10.
- To select number 125, press +100, +10, +10 then 5.



DO NOT turn off the unit with the volume set to an extremely high level; otherwise, the sudden blast of sound may damage your hearing, speakers, and headphones when you turn on the unit or start playback.

To turn off the daily timer, press CANCEL.

- While the timer is being set, the timer indicator (ON) lights up.
- While the timer is working, the timer indicator (ON) flashes.
- If you do not operate the unit for more than 1 hour, the unit will turn off.

C Using the timer (Remote control only)

Setting the Clock

When the power is supplied through the AC outlet for the first time after the purchase, the CLOCK indicator and "0:00" (or "AM 12:00") flash on the display. Set the clock before using the sleep and daily timers.

- Press CLOCK/TIMER.
- Press <<< or >>> to adjust the hour.
 - When you press and hold the button, the hour digit changes continuously.
- Press SET.
- Repeat 2 and 3 to adjust the minute.
 - When you press and hold <<<< or >>>> while adjusting the minutes, the minutes digits change continuously.
 - If you want to change the hour setting while adjusting the minutes, press CANCEL.

To display the clock, press DISPLAY.

- Each time you press the button, the clock and normal indicator changes alternately.

NOTE

- About one hour after you disconnect the AC power cord, the set time will be reset.
- If the power supplied using batteries, the clock

does not appear on the display when the unit is turned off.

Setting the Sleep Timer

Press SLEEP.

Each time you press the button, the shut-off time (in minute) changes as follows:
 10 → 20 → 30 → 60 → 90 → 120 → OFF → (back to the beginning)

The unit is now set to turn off after the minutes you set have elapsed.
 * If no operation is performed while the Sleep Timer is set to longer than 30 minutes, the unit turns off automatically 30 minutes later.

To check the remaining time until the unit shuts off, press SLEEP once.

To cancel the sleep timer, press SLEEP repeatedly to select "OFF".

Setting the Daily Timer

Using the Daily Timer, you can wake up with your favorite music.

NOTE

Tune into a station, load a disc, or connect a USB device/iPod to the unit, and make sure that the source works properly beforehand.

D Convenient playback (Remote control only)

Program Playback

You can program up to 30 tracks from a disc or a USB device in any desired order including the same tracks.

NOTE

- You can only make a program when playback is stopped.
- While making a program, you cannot specify a group number to select a track.

Load a disc or connect a USB device before making a program.

- Press CD >II< or USB >II<.
- Press ■ to stop playback.
- Press PLAY MODE to select "PROGRAM."
- Press the number buttons to select the track to program.
- Repeat step 4 to select other tracks for the program.
 - To cancel the last track in the program, press CANCEL once.
- Press CD >II< or USB >II<. Playback starts.

While stopped:

To confirm the programmed tracks, press <<<< or >>>> repeatedly; the tracks in the program will successively appears on the display in the programmed order.

To add a track to the end of the program, press the number buttons to select the track.

To delete the tracks in the program, press CANCEL repeatedly.

- Each time you press the button, the last track in the program is erased.
- Turning off the power also clears the program.

To exit from the program play, press PLAY MODE repeatedly until the "PRGM" indicator goes off.

Random Playback

You can play all the tracks, on the disc or USB device in random order.

Load a disc or connect a USB device before random play.

See [B] Playing back a disc/USB device.

- Press CD >II< or USB >II<.
- Press PLAY MODE to select "RANDOM."

The tracks are played in random order once.

The <<<< button works only to go back to the beginning of the current track during the random playback.

To exit from random mode, press PLAY MODE. The "RANDOM" indicator goes off.

Repeat Playback

You can repeat a track or tracks on the disc or USB device as many times as you like.

Press REPEAT.

Each time you press the button, the play mode changes as follows:

For CDs:
 <>ALL → <> → canceled → (back to the beginning)

- <>ALL: Repeats all the tracks on the disc.
- In program mode or random mode, only <>ALL can be selected.
- <>: Repeats the current track.

For MP3/WMA files:
 <>ALL → <>GROUP → <> → canceled → (back to the beginning)

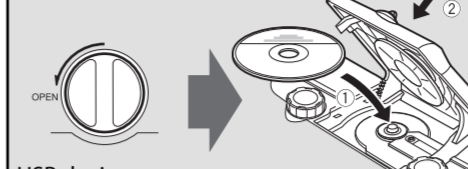
- <>ALL: Repeats all the tracks on the disc or USB device.
- In program mode or random mode, only <>ALL can be selected.
- <>GROUP: In normal play mode, repeats all the tracks in a group.
- <>: Repeats the current track.

To exit from the repeat mode, press REPEAT repeatedly until the repeat indicator goes off.

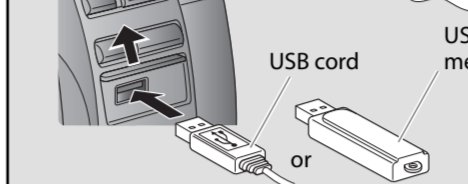
E Playing back a disc/USB device

Load a disc or connect a USB device.

Disc



USB device



Display during playback



Start Playback

- Press CD >II< or USB >II<.

Starts reading the disc or USB device and playback.

- Adjust the volume.

To stop playback, press ■.



- To pause, press CD >II< or USB >II<.
 - To cancel pause, press >II< again. Playback continues from the point where it was paused.

To select a track, press <<< or >>>.



- Press >>> once to skip to the beginning of the next track.
- Press <<<< to skip to the beginning of the track being played. Press <<<< twice quickly to skip to the beginning of the previous track.

To locate a track directly, press number buttons.

To fast forward/reverse, press and hold <<<< or >>>> during playback.

To select a group (for MP3/WMA), press GROUP UP or GROUP DOWN. (Remote control only)

- Press GROUP UP to skip to the next group.
- Press GROUP DOWN to skip to the previous group.

F Adjusting the sound

Sound mode

Sound modes can be selected to enhance the type of music being played.

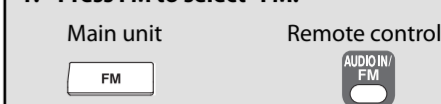
Press SOUND MODE to select the sound mode.

Each time you press the button, the sound mode changes as follows:

- Sound mode selection:**
 - BEAT: Set to this position for music with a heavy beat, such as rock and disco music.
 - POP: Set to this position for light music including popular and vocal music.
 - CLEAR: Set to this position for crisp and clear sounding music.
 - FLAT: (no effect): Set to this position not to apply any sound mode.

G Listening to FM stations

1. Press FM to select "FM."



Press and hold <<<< or >>>> to change the frequency automatically until a station of sufficient signal strength is tuned in.

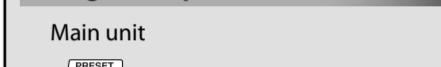
Pressing stations (Remote control only)

You can preset 30 FM stations manually.

- Tune in to a station you want to preset.
- Press SET.
- Finish the following steps while the indication on the display is flashing.
 - Press and hold <<<< or >>>> to change the frequency automatically until a station of sufficient signal strength is tuned in.
- Press SET to store the station.

To listen to the preset stations, press number buttons to select the preset number.

Tuning in to a preset station



Each time you press the button, you can select the preset station from 1 to 30.

You can select the preset station directly pressing number buttons.

Improving the FM reception (Remote control only)

When an FM stereo (FM) broadcast is hard to receive or noisy, select the monaural reception (MONO) mode.

Press FM MODE.

- To restore stereo reception, press FM MODE again.

Adjusting the antenna
 Adjust the FM telescopic antenna's length, angle and direction until the best reception is obtained.

Adjusting the volume

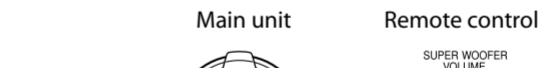
You can adjust the volume level between MIN 01 and 30 MAX.



CAUTION:
 Excessive sound pressure from earphones or headphones can cause hearing loss.

Adjusting the super woofer volume

You can adjust the super woofer volume level between 1 and 6.



Turning off the sound temporarily (Remote control only)

Press MUTING.

To restore the sound, press MUTING again or adjust the volume.

Connecting other equipment

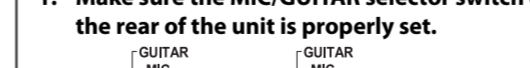
Microphone/guitar mixing

Using a microphone or a guitar, you can mix its sound with a source sound.

CAUTION

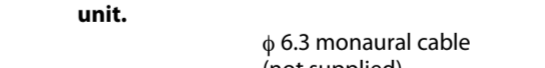
DO NOT connect a bass guitar to the MIC/GUITAR INPUT jack, as it may damage the unit.

1. Make sure the MIC/GUITAR selector switch on the rear of the unit is properly set.



2. Set the MIC/GUITAR LEVEL control to - by turning it counterclockwise.

3. Connect a microphone or a guitar into the MIC/GUITAR INPUT jack on the rear of the unit.



4. Start a source.

5. Adjust the volume and microphone/guitar levels.



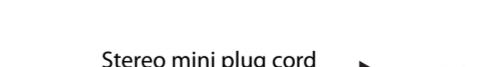
Listening to an external device

Before listening to an external device, connect it properly to the unit.

Refer also to the instruction manual for an external device.

1. Set the volume level of the unit to minimum.

2. Connect an external device to the AUDIO IN jack on the rear of the unit.



3. Press AUDIO IN to select "AUDIO."

4. Press and hold SET to adjust the source input level. Each time you press the button, the input level changes as follows: LEVEL 1 → LEVEL 2 → LEVEL 3 → (back to the beginning)

- LEVEL 1: Ordinary input level.
- LEVEL 2: Increases the input level.
- LEVEL 3: Increases the input level more than "LEVEL 2."

5. Start playback of the external device.

6. Adjust the volume of the unit.

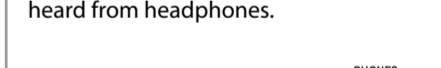
Using Headphones

Be sure to turn down the volume before connecting or putting on the headphones.

- Connecting the headphones deactivates the speakers.
- Sound adjustments other than the super woofer volume level also affect the sound through the headphones.

NOTE

If iPod is selected as a source, no sound is heard from headphones.



Free Manuals Download Website

<http://myh66.com>

<http://usermanuals.us>

<http://www.somanuals.com>

<http://www.4manuals.cc>

<http://www.manual-lib.com>

<http://www.404manual.com>

<http://www.luxmanual.com>

<http://aubethermostatmanual.com>

Golf course search by state

<http://golfingnear.com>

Email search by domain

<http://emailbydomain.com>

Auto manuals search

<http://auto.somanuals.com>

TV manuals search

<http://tv.somanuals.com>