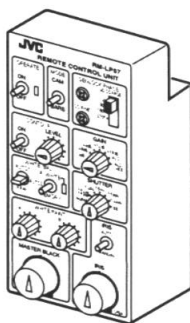


# JVC | Instructions

## REMOTE CONTROL UNIT **RM-LP57**

**BEDIENUNGSANLEITUNG:**  
**FERNBEDIENEINHEIT**  
**MANUEL D'INSTRUCTIONS:**  
**UNITE DE TELECOMMANDE**



**For Customer Use:**

Enter below the Serial No. which is located on the rear of the body.  
Retain this information for future reference.

Model No. RM-LP57

Serial No. \_\_\_\_\_



**CAUTION**

**RISK OF ELECTRIC SHOCK.**  
**DO NOT OPEN**



CAUTION: TO REDUCE THE RISK OF ELECTRIC SHOCK,  
DO NOT REMOVE COVER (OR BACK).  
NO USER SERVICEABLE PARTS INSIDE.  
REFER SERVICING TO QUALIFIED SERVICE PERSONNEL.

**WARNING:**

**To PREVENT FIRE OR SHOCK HAZARD, DO NOT EXPOSE THIS UNIT TO RAIN OR MOISTURE.**

**AVERTISSEMENT:**

**POUR EVITER LES RISQUES D'INCENDIE OU D'ELECTROCUTION, NE PAS EXPOSER L'APPAREIL**

**This instructions are given in three languages:**

- English : page 1 to 10
- German : page 11 to 20
- French : page 21 to 30

**bedienungsanleitung in drei Sprachen:**

- English : Seite 1 to 10
- Deutsch : Seite 11 to 20
- Französische : Seite 21 to 30

**Les explications techniques sont données en trois langues:**

- Anglais : page 1 à 10
- Allemand : page 11 à 20
- Français : page 21 à 30

Thank you for purchasing the JVC RM-LP57 Remote Control Unit.

To make the most of your new remote control, please read this booklet carefully and retain it for future reference.

• The RM-LP57 is a control unit designed for connection to the KY-F55B, KY-F50 and KY-F32 color video camera.

**CONTENTS**

	Page
FEATURES .....	2
PRECAUTIONS .....	3
CONNECTIONS .....	3
CONTROLS, CONNECTORS AND INDICATORS .....	4
OPERATIONS .....	7
USING AN MD LENS .....	7
ATTACHING THE RACK MOUNT BRACKETS .....	9
SPECIFICATIONS .....	10

**FEATURES**

- Operation of an MD lens is possible by connecting the RM-713MD lens remote control unit (optional).
- Rack mount bracket allows installation of the RM-LP57 in a rack.

**PRECAUTIONS**

■ Safety precautions

- Be sure that no inflammable materials, liquids, or metal objects are introduced into the RM-LP57. This may damage the internal circuitry and lead to failure.
- Never use the RM-LP57 if it has been modified or the cover has been removed.
- If the RM-LP57 behaves abnormally (emits strange sounds, odors, or smoke), cut off the power immediately and contact your nearest JVC-authorized service agent.

■ Handling the unit

● Operating environment

Do not use the unit in places subject to any of the following:

- vibrations,
- moisture,
- dust,
- smoke or gas.

● Ambient temperature:

Observe the ambient temperature range as described in the Specifications on page 10.

● External care of the RM-LP57:

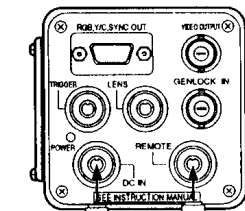
Gently wipe off dust with a soft dry cloth (such as flannel). If the unit is extremely dirty, dip a soft cloth into a detergent solution diluted with water, wring it thoroughly, then wipe the dirt off. Dry the unit with a dry cloth. Do not use a rag treated with chemicals or allow volatile liquids such as benzene, thinner, alcohol, etc., to come in contact with the RM-LP57. This may mar the finish or the damage the coating.

- Where there are strong electromagnetic waves or magnetism, for example near a radio or TV transmitter, transformer, motor, etc., the picture may contain noise and the colors may be incorrect.

**CONNECTIONS**

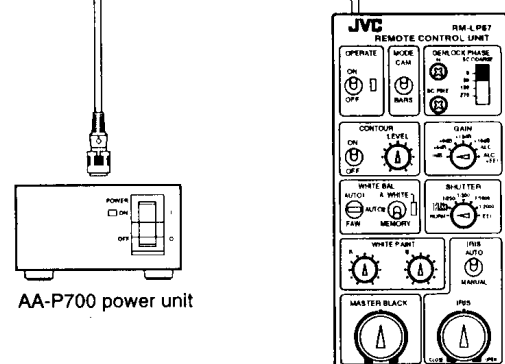
- Use a 5 meter cable to connect the RM-LP57 to the KY-F55B color video camera (sold separately). (You can also connect the RM-LP57 to the KY-F32 in the same way.) Whenever you are making a connection, be sure to turn off the power supply unit connected to the camera.

Rear connector of the KY-F55B

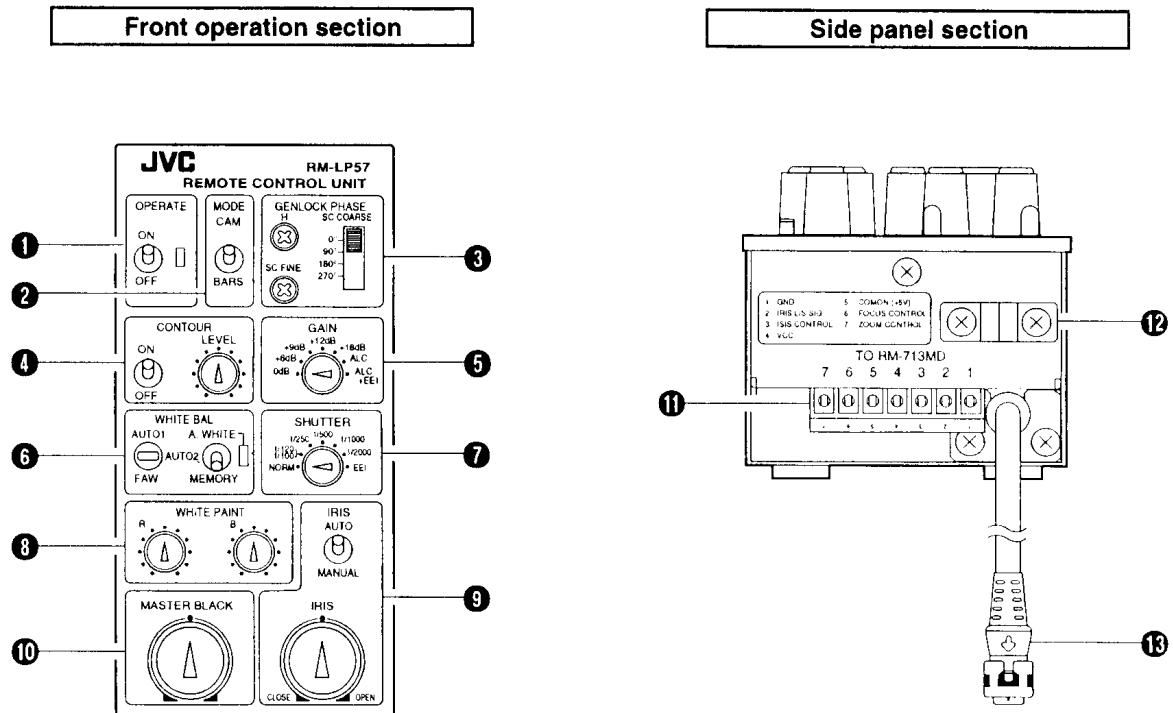


**Note:**  
When using the RM-LP57, be sure to set the camera's DATA switch to "CAM".

Connect to REMOTE connector



AA-P700 power unit



## MAIN FUNCTIONS

### 1 [OPERATE]

- ON** : Set to this position to control the camera with the RM-LP57.
- OFF** : Set to this position to disable the RM-LP57's camera control capability.

### 2 [MODE]

Camera signals and color bar signals can be switched with the mode switch.

**CAM** : The camera's video signals are output from the camera's video output connector.

**BARS** : Color bar signals are output from the camera's video output connector.

### 3 [GENLOCK PHASE]

Color phase adjustment (SC COARSE, SC FINE) and horizontal phase adjustment (H PHASE)) can be performed during genlocking.

The SC phase coarse adjustment allows coarse adjustment (0°, 90°, 180°, 270°) while the SC fine adjustment volume allows fine adjustment.

The horizontal phase adjustment volume allows the adjustment of the horizontal sync phase.

### 4 [CONTOUR]

Contour compensation can be set to ON/OFF with the CONTOUR switch.

**ON** : The contour compensation circuit is activated. The degree of compensation can be adjusted with the CONTOUR LEVEL control.

**OFF** : The contour compensation function is deactivated.

### 5 [GAIN]

Camera sensitivity can be set with the sensitivity switch. Seven settings are available ( 0 dB, +6 dB, +9 dB, +12 dB, +18 dB, ALC, ALC+EEI).

#### Note:

- When the sensitivity switch is set to ALC or ALC+EEI, the camera's Auto Iris mode is engaged regardless of the position of the iris mode switch.

### 6 [WHITE BAL]

The White Balance mode for the camera connected to RM-LP57 can be selected with the 3-position white balance mode switch.

**AUTO1** : Uses the settings registered for Auto White Balance 1.

**AUTO2** : Uses the settings registered for Auto White Balance 2.

**FAW** : The Full-time Auto Balance mode is engaged and white balance is automatically set to the optimum level.

#### Auto white balance function

When the white balance mode switch is set to AUTO1 or AUTO2, the camera's auto white circuit is activated every time A.WHITE is selected with the auto white balance switch. Operation is indicated with the auto white LED as shown below.

**LED light** : The auto white balance function is operating.

**LED goes out** : The auto white balance function has finished operating.

**LED blinking** : An error occurred during operation. (Blinking stops after several seconds.)

## CONTROLS, CONNECTORS AND INDICATORS

### 7 [SHUTTER]

The camera's Shutter mode can be set with the 7-position shutter mode switch. (NORMAL, 1/100 or 1/120, 1/250, 1/500, 1/1000, 1/2000, EEI)

**Note:**

- When the sensitivity switch is set to ALC+EEI, the Shutter mode is locked to EEI regardless of the shutter mode switch position.
- When the shutter mode switch is set to EEI, the camera's iris is set to auto iris regardless of the position of the iris mode switch.

### 8 [WHITE PAINT]

When the White Balance mode is set to AUTO1 or AUTO2, gain for the R or B channel's can be fine-adjusted with the white paint control.

- When the white paint controls are set to the center positions, the white balance condition obtained with the auto white balance function has priority.
- To activate the paint function after completion of auto white balance operation, set the white paint controls to positions other than center. If this is not necessary, leave the white paint controls at the center position.
- The previous settings of the white paint controls are stored in memory so you can obtain the same condition when the power is supplied again even if the control positions have been changed. When you turn the controls, the stored settings are canceled and the current settings become effective.

### 9 [IRIS]

Manual iris (MANUAL) or auto iris (AUTO) can be selected with the iris mode switch.

**AUTO** : The auto iris level can be adjusted with the iris control knob.

**Note:**

- When the LENS switch is set to MANU, the auto iris function does not operate even if the AUTO mode is selected.

**MANUAL** : The iris can be adjusted from CLOSE to OPEN with the iris control knob.

**Note:**

- The Auto Iris mode is automatically engaged whenever the sensitivity switch is set to ALC or ALC+EEI, or the shutter mode switch is set to EEI. Manual operation is not possible.
- The iris may not close completely with some lenses.

### 10 [MASTER BLACK]

The black level can be adjusted with the master black control.

- The standard position of the master black control is the center position.

6

### 11 [TO RM-713MD] 7-pin connector

Connect the RM-713MD remote control unit (optional).

### 12 [Cable holder]

Use to secure the cables connected to the RM-713MD.

### 13 [Cable] 5m

Connects the remote control unit to a camera.

## OPERATIONS

1. Connect RM-LP57 to the camera as described in "CONNECTIONS". (Page 3)
2. Turn the camera's power unit ON. (For camera operation, refer to the camera's instruction manual.)
3. Press the RM-LP57 OPERATE switch to ON.
4. The OPERATE LED blinks, then lights up, indicating that remote operation with the RM-LP57 is now possible.
  - After the power is switched on, initialization of the RM-LP57 takes about two seconds. Operation is not possible during this time.

## USING AN MD LENS

The optional RM-713MD lens remote control unit is required when using an MD lens.

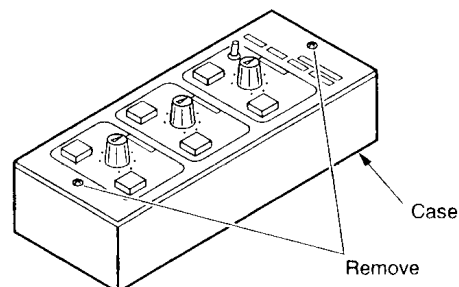
- Control of the focus, zoom and iris of an MD lens (HZ-610MD) is possible when the RM-713MD lens remote control unit is connected to the RM-LP57.

**Note:**

- The zoom and focus cannot be controlled if the lens is not an MD lens.
- When using a power unit other than the AA-P700 to power the camera when the RM-713MD, is connected, the power unit must supply 11.5 V to 13 V, 1 A or more.

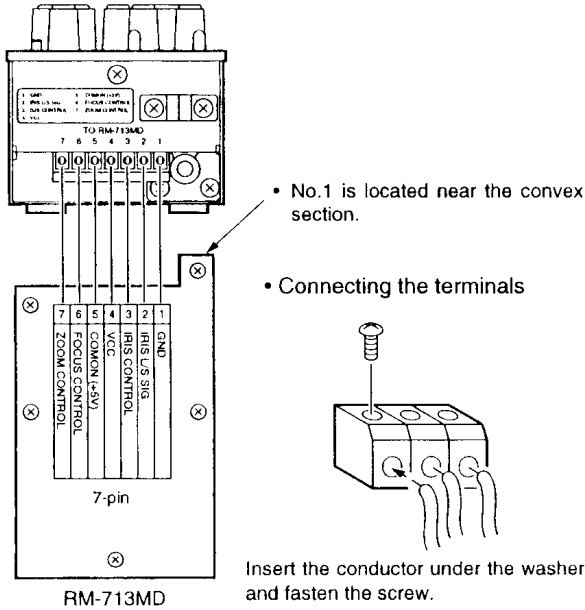
### Connection

1. Remove the two screws on the panel of the RM-713MD to remove the case from the control panel.
  - Remove the case of the RM-713MD.

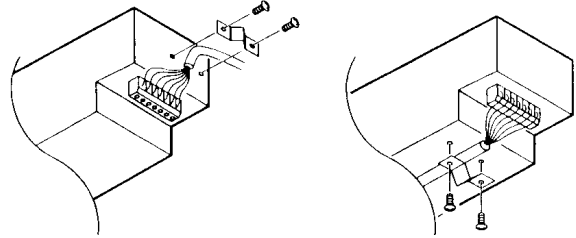


2. Connect the 7-pin connector of the RM-LP57 to the 7-pin connector in the RM-713MD by matching their pin numbers.
  - Pass the connection cables through the rubber bushes incorporated in the RM-713MD.

- Connect each pin to the pin with the matching number.



3. After all 7 pins are connected, replace the case on the RM-713MD control panel.
4. Secure the connection cables to the RM-LP57 with the cable holder.
  - There are two ways to secure the cables depending on how the unit will be used.



## Operation

1. Set the camera and the RM-LP57 so that the camera can be remote-controlled with the RM-LP57. (Refer to "OPERATIONS" on page 7.)
2. Select AUTO or MANUAL with the RM-713MD's iris switch.
3. When MANUAL is selected, the lens iris can be adjusted with the RM-713MD iris control button. (Iris control is not possible on the RM-LP57.)

8

Iris speed can be adjusted with the iris control speed adjustment knob.

### Note:

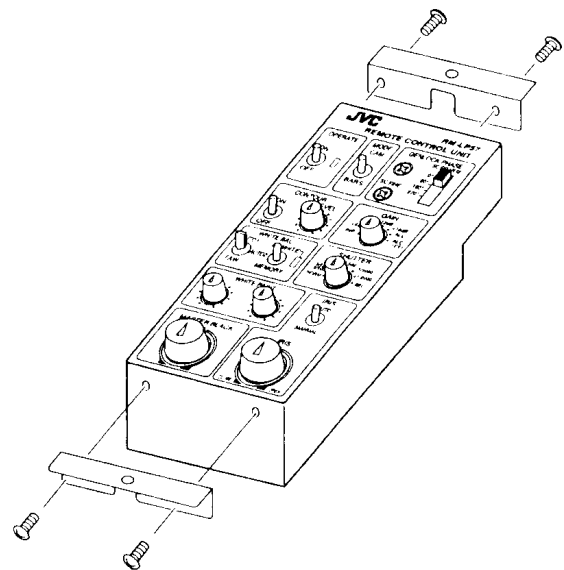
- When AUTO is selected, the lens's iris is controlled by the RM-LP57.
- The Auto Iris mode is automatically engaged whenever the sensitivity switch is set to ALC or ALC+EEI, or the shutter mode switch is set to EEI. Manual operation is not possible.
- If the RM-713MD iris switch is set to MANUAL after the Auto Iris mode has been engaged with the RM-LP57, the iris setting obtained by the auto iris function may change slightly.

4. Lens focus can be adjusted with the RM-713MD's focus control button. Focus speed can be adjusted with the focus control speed adjustment knob.
5. Lens zoom can be adjusted with the RM-713MD's zoom control button. Zoom speed can be adjusted with the zoom control speed adjustment knob.

- For details on RM-713MD operation, refer to the RM-713MD instruction manual. If the AA-P700 is used to power the camera, the connection cable between the RM-LP57 and the camera can be extended up to 50 meters. However, if the RM-713MD's speed control is set to SLOW, remote control may not be possible with the RM-713MD.

## ATTACHING THE RACK MOUNT BRACKETS

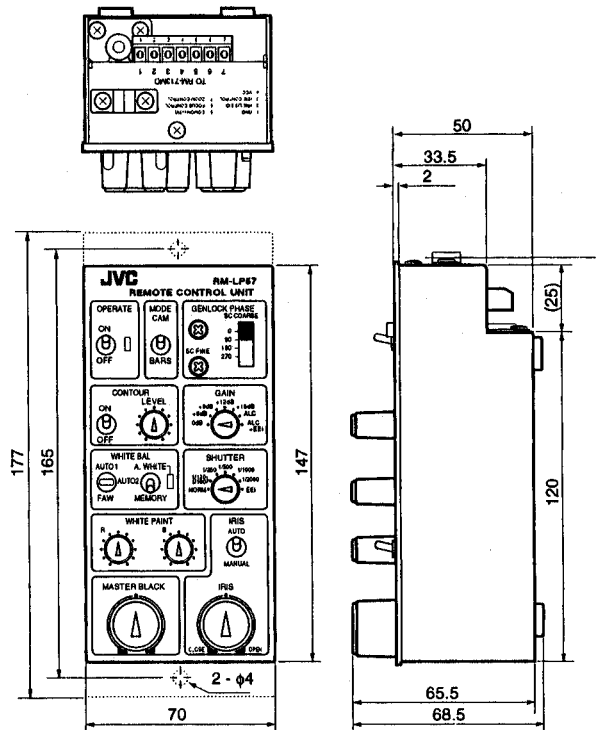
To install the RM-LP57 in a rack, attach the rack mount brackets.



# SPECIFICATIONS

- Power supply** : 9VDC (supplied from the connected camera)
- Current consumption** : 62mA
- Weight** : 770g
- Ambient temperature range** : -5°C to 40°C
- Accessories** : Rack mount bracket (SC46005: identical for left and right) x 2  
Rack mount bracket attachment screw (SSSP3006N) x 4

## ■ Dimensions (unit: mm):



• Design and specifications are subject to change without prior notice.

# JVC

VICTOR COMPANY OF JAPAN, LIMITED

## Free Manuals Download Website

<http://myh66.com>

<http://usermanuals.us>

<http://www.somanuals.com>

<http://www.4manuals.cc>

<http://www.manual-lib.com>

<http://www.404manual.com>

<http://www.luxmanual.com>

<http://aubethermostatmanual.com>

Golf course search by state

<http://golfingnear.com>

Email search by domain

<http://emailbydomain.com>

Auto manuals search

<http://auto.somanuals.com>

TV manuals search

<http://tv.somanuals.com>