

jWIN

DIGITAL PHOTO FRAME WITH KEYCHAIN



Instruction Manual JP-131

Please read this manual carefully before operating and save it for future reference.

Have a question? Please visit <http://www.jWIN.com>

USER SAFETY GUIDE

Instructions on Environmental Protection

Do not dispose of this product in the usual household garbage at the end of its life cycle; bring it to a collection point for the recycling of electrical and electronic appliances. This symbol on the product means the instructions for use or the packing will inform about the methods for disposal. The materials are recyclable as mentioned in its marking. By recycling, material recycling, or other forms of re-utilization of old appliances, you make an important contribution to protect the environment. Please inquire at your local community administration for the authorized disposal location.



Important Safety Warnings

1. To prevent fire or electric shock, do not expose the unit to rain or moisture.
2. Never attempt to open the cabinet. Always refer servicing to a qualified technician.

FCC regulations state that any change or modification to the equipment, not expressly approved by maker or its authorized parties, could void user's authority to operate this equipment.

USER SAFETY GUIDE

Important Safety Instructions

1. **READ INSTRUCTIONS** - All safety and operating instructions should be read before the appliance is operated.
2. **RETAIN INSTRUCTIONS** - The safety and operating instructions should be retained in a secure place for future reference.
3. **HEED WARNINGS** - All warnings on the appliance and in the operating instructions should be observed.
4. **FOLLOW INSTRUCTIONS** - All operating and use instructions should be followed.
5. **WATER AND MOISTURE** - The appliance should not be used near water. For example: near a bathtub, kitchen sink, laundry tub, and/or swimming pool.
6. **HEAT** - The appliance should be situated away from heat sources such as radiators, heat registers, stoves, or other appliances (including amplifiers) that produce heat.
7. **POWER SOURCES** - The appliance should be connected to a power supply only of the type described in the operating instructions or as marked on the appliance.
8. **CLEANING** - The appliance should only be cleaned with a dry cloth.
9. **OBJECT AND LIQUID ENTRY** - Care should be taken so that objects do not fall and liquids are not spilled into the device's openings.
10. **CARTS AND STANDS** - The appliance should be used only with a cart or stand that is recommended by the manufacturer. An appliance and cart combination should be moved with care. Quick stops, excessive force, and uneven surfaces may cause the appliance and cart combination to overturn causing possible injury to the user and/or damage to the unit.



USER SAFETY GUIDE

Important Safety Instructions – Continued

11. **DAMAGE REQUIRING SERVICE** - The appliance should be serviced by qualified service professional when:
 - a. Objects have fallen into, or liquid has been spilled into the appliance's apertures.
 - b. The appliance has been exposed to rain.
 - c. The appliance has been dropped and suffered damage.
 - d. The appliance does not appear to operate normally, or exhibits a change in performance.
12. **SERVICING** - The user should not attempt to service the appliance beyond what is described in the user's operating instructions. All other servicing should be referred to qualified service professional.
13. **LEAD AND MERCURY** - This product may contain lead and/or mercury. Disposal of these materials may be regulated by your local authorities due to environmental considerations. For more detailed disposal or recycling information, please contact your local authorities or the EIA (Electronic Industries Alliance) – <http://www.eiae.org>

Additional Safety Instructions

- When not in use, keep your device in a safe place where it will not be bent or crushed.

USER SAFETY GUIDE

FCC Notice to U.S. Users

This device complies with Part 15 of the FCC Rules. Operation is subject to the following two conditions: (1) this device may not cause harmful interference, and (2) this device must accept any interference received, including interference that may cause undesired operation. Refer to 47 CFR Sec. 15.19.

This equipment has been tested and found to comply with the limits for a Class B digital device, pursuant to Part 15 of the FCC Rules. These limits are designed to provide reasonable protection against harmful interference in a residential installation. This equipment generates, uses, and can radiate radio frequency energy and, if not installed and used in accordance with the instructions, may cause harmful interference to radio communications, which can be determined by turning the equipment off and on, the user is encouraged to correct the interference by one or more of the following measures:

- Reorient or relocate the receiving antenna.
- Increase the separation between the equipment and receiver.
- Connect the equipment to an outlet on a circuit different from that to which the receiver is connected.
- Consult the dealer or an experienced radio/TV technician for help.

NOTE: Changes or modifications not expressly approved by the party responsible for compliance could void the user's authority to operate the equipment. Refer to 47 CFR Sec. 15.21.

USER SAFETY GUIDE

Industry Canada Notice to Canadian Users

Operation is subject to the following two conditions: (1) this device may not cause harmful interference, and (2) this device must accept any interference received, including interference that may cause undesired operation of the device. Refer to IC RSS 210 Sec. 5.11. The term "IC" before the certification or registration number only means that the registration was performed based on a Declaration of Conformity and that Industry Canada technical specifications were met. It does not imply that Industry Canada (IC) approved this equipment. Refer to Self-Marking 6(f) and RSP 100 Sec. 4.

GETTING STARTED

Thank you for purchasing the JP-131. Unpack the unit and make sure all the accessories are put aside so they will not be lost.

Digital Photo Frame with 1.5" LCD Screen and Built-in Memory Keychain

- Displays digital photos on 1.5" CSTN 65K color display
- Supports JPEG and BMP format
- Download photos through mini USB 1.1 port
- Built-in 8MB flash memory stores up to 70 photos (128 x 128)
- Built-in 180mAh rechargeable Li-Ion Polymer battery
- Supports single photo and auto slide show modes
- Auto power off / Manual power off
- Share photos with family and friends anywhere you go
- Windows Vista ready
- Playback time up to 6 hours

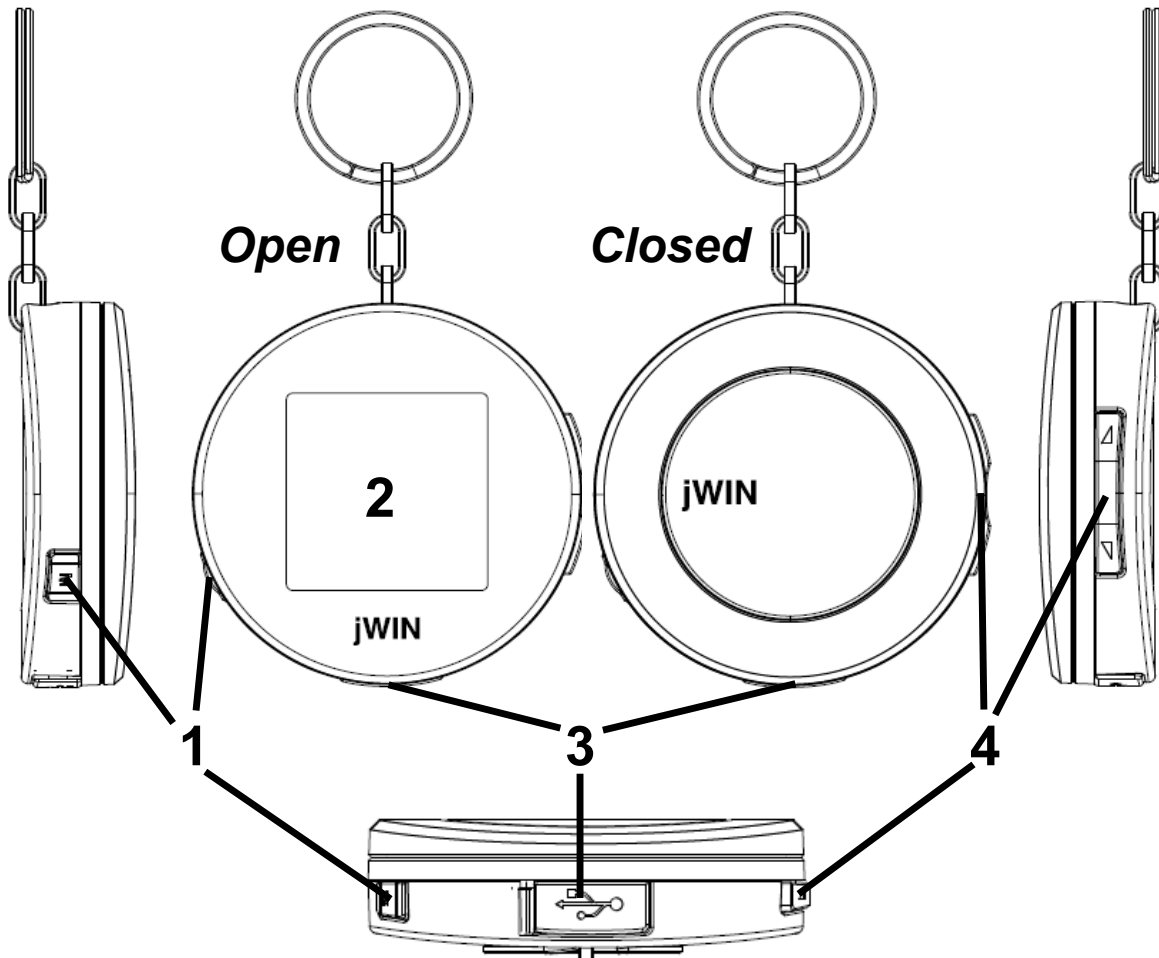
What's Included

- 1.5" Digital Photo Frame Keychain
- USB cable
- Keychain
- Software CD
- Instruction Manual
- Warranty Card



GETTING STARTED

Location of Controls



1. MENU button	3. Mini USB jack
2. LCD Screen	4. Vol+ / Vol- buttons

Charging

- Attach the picture frame to your computer using the USB cable (included). Once connected, the unit will charge automatically.
- Fully charge the unit before first use.

OPERATIONAL INSTRUCTIONS

Power On/Off

In **OFF** mode, press and hold the **MENU** button to power on.

The Main menu will display on the screen: Slide time, Sleep time, Delete, Effect, Contrast, Light, Info, Exit.

In **ON** mode, press and hold the **MENU** button to power off.

Slide time
Sleep time
Delete
Effect

Slide time

In **ON** mode, press the **MENU** button to enter the main menu, then press the **UP** or **DOWN** buttons to select Slide time. Press the **MENU** button to enter. Select "**ON**" ("**OFF**" will stop the function).

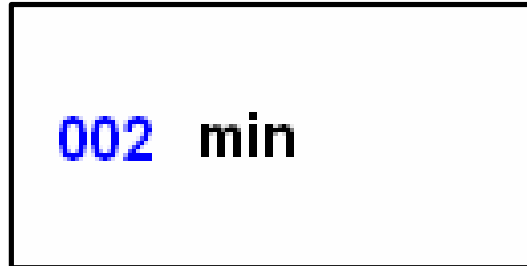
Press **UP** or **DOWN** buttons to choose the slide time interval. There is 01 to 180 seconds available. Press the **MENU** button to save the setting.



OPERATIONAL INSTRUCTIONS

Sleep time

In **ON** mode, press the **MENU** button to enter the main menu, then press the **UP** or **DOWN** buttons to select Sleep time. Press the **MENU** button to enter. Select "**ON**" ("**OFF**" will stop the function).



Press **UP** or **DOWN** buttons to choose the sleep time. There is 01 to 180 minutes available. Press the **MENU** button to save the setting.

Delete Photo

In **ON** mode, press the **MENU** button to enter the main menu, then press the **UP** or **DOWN** buttons to select Delete. Press the **MENU** button to enter. Select "**Delete One**", and press the **MENU** button to confirm and delete the selected image. Select "**Delete All**" followed by the **MENU** button to confirm and delete the all images.



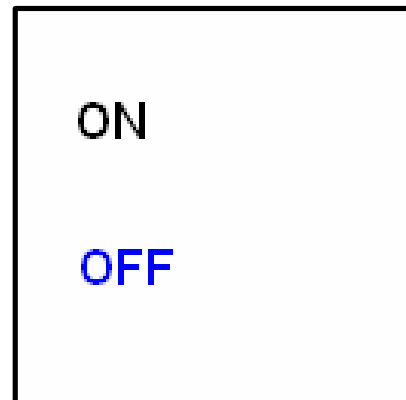
OPERATIONAL INSTRUCTIONS

Display Side

In **ON** mode, press the **MENU** button to enter the main menu, then press the **UP** or **DOWN** buttons to select Display Side or Display None. Press the **MENU** button to enter. Select Side to display the photos and photo numbers.

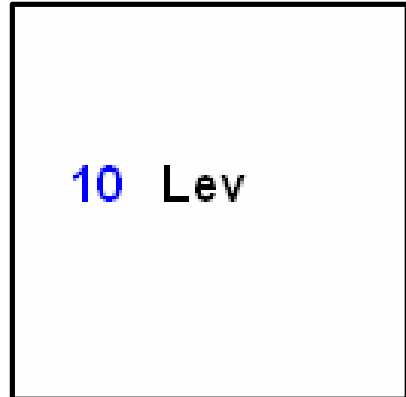
Effect

In **ON** mode, press the **MENU** button to enter the main menu, then press the **UP** or **DOWN** buttons to select Effect. Select **ON**, and the picture will play in effect. (OFF will stop the function)



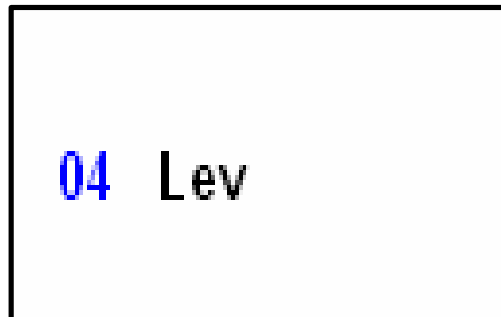
Contrast

In **ON** mode, press the **MENU** button to enter the main menu, then press the **UP** or **DOWN** buttons to select Contrast (01-10). Press the **MENU** button to enter.



Light

In **ON** mode, press the **MENU** button to enter the main menu, then press the **UP** or **DOWN** buttons to select Light (01-10). Press the **MENU** button to enter.



OPERATIONAL INSTRUCTIONS

Info

Display information on firmware version, memory status. (8Mb)

Cap 02/29

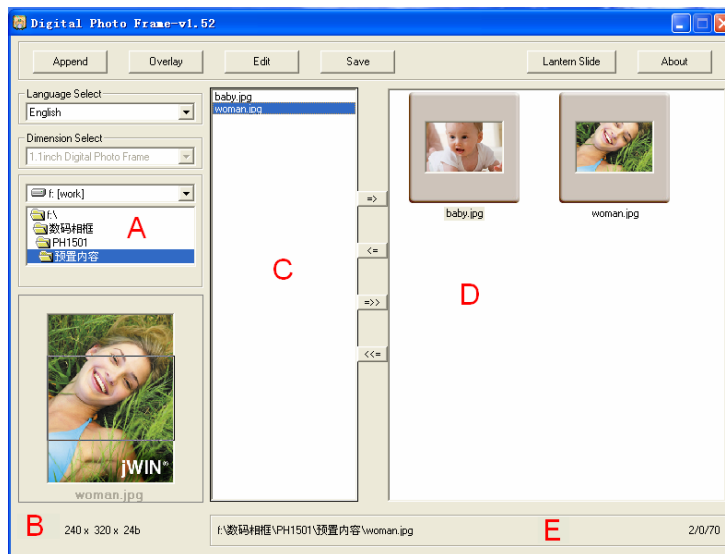
Ver 1501

Exit

Exit from the main menu.

Using the Digital Photo Frame Tool

Connect the device to a PC using the USB cable (included). Select **Update** and “charge” will display on the screen. Open the Digital Photo Frame Tool for the following image.



OPERATIONAL INSTRUCTIONS

Photo Frame Tool-continued

Interface instruction (see image on previous page)

- A. File path select.
- B. Preview window. Display the image selected
- C. Displays the images selected in a window.
- D. Displays the images which will be downloading to device.
- E. Displays the image path selected, the number of the images in download window/the number of the images in device/the total number of the images able to be stored in device. Displays the rate of progress.

Menu instruction

Append: Append the images in download window to the device.

Overlay: Overlay the device with the images in download window.

Save: Save the images in window D to the Digital Photo Frame PC soft directory.

Lantern Slide: Display the lantern slide with the images in C area.

About: Information of the company and device.

SPECIFICATIONS

- LCD Panel
 - Diagonal Size: 1.5"
- Support file type: JPEG, BMP
- Inputs & Outputs
 - DC power Input Jack (Mini USB)
- Power Sources
 - DC 5V (USB)
- Unit Dimensions (W x H x D): 2.2" x 1.6" x 0.4" (45mm x 32.5mm x 9mm)

jWIN

TEL: 516-626-7188

FAX: 516-626-7105

website: www.jWIN.com

© 2008 jWIN Electronics Corp. All rights reserved. No portion of this printed material or product enclosed herewith including design, shape and graphics, may be reproduced or transmitted in any form without the expressed written consent of jWIN Electronics Corp. by any means, electronic or mechanical, including photocopying, recording or use of an information storage and retrieval system. Any unauthorized distribution or reproduction of this printed material or product, or any portion thereof, will be prosecuted to the fullest possible extent of the law.

Free Manuals Download Website

<http://myh66.com>

<http://usermanuals.us>

<http://www.somanuals.com>

<http://www.4manuals.cc>

<http://www.manual-lib.com>

<http://www.404manual.com>

<http://www.luxmanual.com>

<http://aubethermostatmanual.com>

Golf course search by state

<http://golfingnear.com>

Email search by domain

<http://emailbydomain.com>

Auto manuals search

<http://auto.somanuals.com>

TV manuals search

<http://tv.somanuals.com>