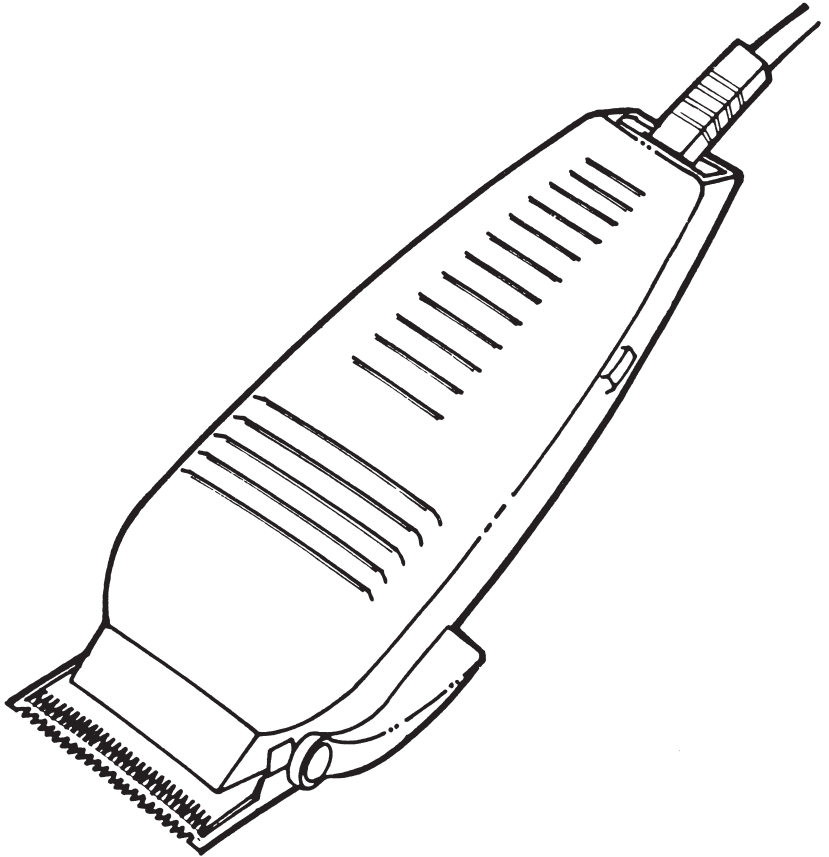


KAMBROOK



Hair Clipper Kit



Kambrook Safety

Welcome to Kambrook and your new Hair Clipper Kit.

At Kambrook we believe that the safe performance of our products is the first priority in any consumer product so that you, our valued customer, can confidently use and trust our products.

We ask that any electrical appliance that you use be operated in a sensible fashion with due care and attention placed on the following important operating instructions:

Read all instructions thoroughly before activating the appliance and retain them for future reference.

Ensure that the power source to be used is the same as the voltage requirements of the product.

Never immerse the power cord or appliance in any form of liquid and do not use near bath tubs, basins or other vessels containing water.

The appliance is not intended for use by young children or infirm persons without supervision.

Young children should be supervised to ensure that they do not play with the appliance.

This hair clipper is for household use only, and not for animal clipping or shearing.

The hair clipper may be plugged into any 230/240V power outlet. It should not be left unattended when plugged in.

Always switch the hair clipper off then switch off and unplug from the power outlet when not in use and before cleaning.

Disconnect by gripping the plug and do not pull the cord.

Do not place or store hair clipper where it can fall or be pulled into bath tub or sink. If hair clipper falls into water, unplug it immediately. Do not reach into the water.

The hair clipper has arcing or sparking parts inside, do not use in areas where petrol, paints, aerosols, oxygen or other inflammable substances are used or stored.

Keep the power cord and unit away from hot or heated surfaces.

Do not pull, twist or wrap the power cord around the casing, when using or storing hair clipper. Periodically check the cord for signs of wear.

Do not operate the hair clipper if it has been dropped or damaged in any manner.

Regularly inspect the power cord, plug and actual appliance for any damage. If found damaged in any way, immediately cease use of the appliance and return the entire appliance to the nearest authorised Kambrook Service Centre for examination, replacement or repair.

Please call 1800 800 634 for service centre details.

Never drop or insert any object into any opening, as this may cause an electrical hazard.

Always switch the hair clipper OFF before putting down on any surface.

Do not use the hair clipper with a damaged or broken comb nor with teeth missing from the blades, to avoid injury.

Use this hair clipper only as described in this instruction book. The use of attachments not recommended by the manufacturer may cause a hazard.

Keep blades regularly oiled and clean blades after each use.

If the appliance is connected to an extension cord or power board then

the extension cord or power board should be positioned so that is not subject to splashing or contact with moisture.

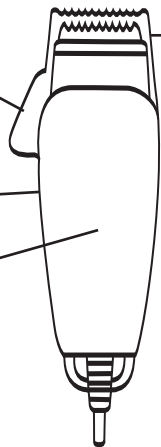
The installation of a residual current (RCD) is recommended to provide additional safety protection when using electrical appliances, It is also advisable that a RCD with a rated residual operating current not exceeding 30mA be installed in the electrical circuit supplying the bathroom. See your electrician for professional advice.

Features Of Your Kambrook Hair Clipper

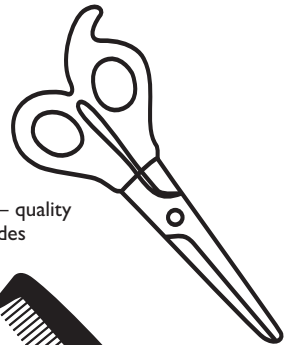
Adjustable blade control lever for close trimming and finishing off particularly around the neck and ears.

On/Off switch

Easy hold clipper



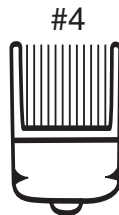
Blade guard – protects blade when not in use



Barber's scissors – quality stainless steel blades



Barber's comb – for precision cutting control

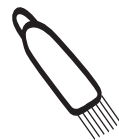


Trim guide # 1 – for short hair

Trim guide # 2 – for medium hair

Trim guide # 3 – for medium – long hair

Trim guide # 4 – for longer hair



Blade brush – for cleaning the cutting blades after use



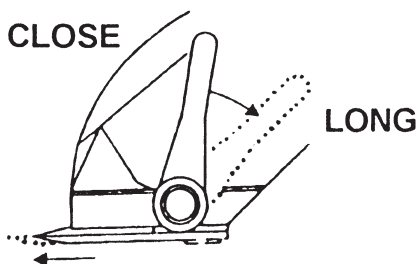
Lubricating oil – to keep blades in peak condition

Before using the hair clipper, make sure the blades are clean and well oiled. Unwind the cord to its full length, ensure that the on/off switch is off 'O' and plug the cord into a 230 /240V power outlet, then turn the power on.

Operate the hair clipper with the ON/OFF switch.

NOTE: For uniform cutting, never push or force the hair clipper through the hair at a fast speed. The hair clipper works most efficiently when it works at its own speed.

Adjustable Lever



The adjustable lever adds versatility to your hair clipper by allowing you to gradually change the closeness of your cut without using an attachment comb.

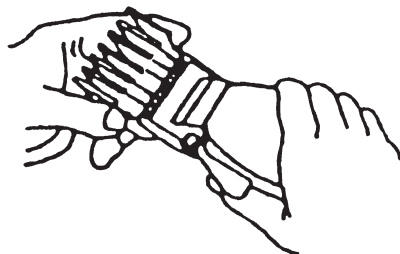
When the lever is in the uppermost position, the blade will give you the closest cut. To increase the cutting length, push the lever downward gradually.

The lever extends the variety of lengths that can be achieved with each attachment comb, by using the varying cutting edges with each attachment comb.

Attachment Combs

Attachment combs should be fitted to hair clipper by placing the top edge (comb edge) of the attachment comb over the top of the cutting blades.

Gently lift the tab at the other end of the attachment comb and push down until a click is heard.



Attachment Comb #1 – leaves hair approx. 3mm (1/8") in length

Attachment Comb #2 – leaves hair approx. 6mm (1/4") in length

Attachment Comb #3 – leaves hair approx. 9mm (3/8") in length

Attachment Comb #4 – leaves hair approx. 12mm (1/2") in length

Initially cut only a small amount of hair until you become accustomed to the length each attachment comb leaves the hair.

It is suggested to try the longest attachment comb on the hair clipper first, then use the shorter one if a shorter length is desired.

Using Your Kambrook Hair Clipper

1. Place a towel around the neck of the person to prevent hair from falling down inside the collar.

2. Position the person in a chair so that his/her head is at your eye level.

3. Comb the hair to remove all the tangles, hold the clipper in a relaxed, comfortable grip to help you maintain accurate cutting control.

4. Before using the clipper ensure that the blades are free of any hair clippings and the blades are well oiled. (See Maintaining Your Kambrook Clipper on page 6)

Medium to Long Cut (with attachment combs)



A-1



A-2



A-3



A-4

1. Start by combing the hair in its natural direction.

2. Place the largest attachment comb onto the hair clipper and start by trimming the sides from the bottom upwards. Hold the hair clipper lightly against the hair with the teeth of the attachment comb pointing up but flat against the head. Slowly lift the hair clipper up and outward through the hair, cutting only a small amount at a time. (Diagram A-1)

3. Repeat around sides and back of head. (Diagram A-2 & A-3)

4. If you desire shorter hair, either change to a lower number attachment comb or apply more pressure and less lift away from head with the present attachment comb.

5. For the top of the head, you will give a fairly short cut if you use the #4 attachment comb. With the teeth flat against the head, slowly start trimming from the front to the back. (Diagram A-4)

Note: The entire procedure requires practice, and it is always better to leave the hair longer in the first few haircuts.

Outlining



B-1



B-2

1. Outlining requires no attachment comb. Take the hair clipper and push the lever up to the close – cut position (see “adjustable lever”).

2. Comb hair into the style. Position hair clipper between the side burns and the ear. (Diagram B-1)

3. Make sure the corner edge of the blade is up against the hairline. With the outline of the hair as your guide, slowly move the hair clipper over, around and behind the ears. (Diagram B-2)

4. For the back of the neck and side burns, hold the clipper up side down, and holding it against the skin at the length desired, move downwards.

Short Cuts to Perfect Flat Tops, Crew Cuts



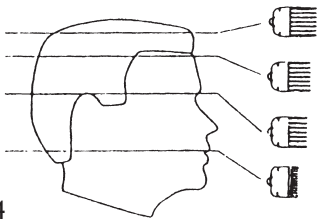
C-1



C-2



C-3



C-4

1. Always cut from the back of the neck to the crown, using the longest attachment comb. Holding it flat against the head, slowly move the hair clipper up through the hair. (Diagram C-1)

2. Use the same technique for the sides, cutting from the bottom to the upper side of the head.

3. From the front to the crown, cut the hair against the direction in which it grows. Then even it up with the sides. (Diagram C-2)

4. For a flat top, use a normal flat comb and cut hair on top of the head over it.

5. To taper hair down to the neckline, use closer cutting attachment combs. Comb hair and check for uneven spots and outline sideburns and neckline. (Diagram C-3)

6. If a short tapered cut on the sides and back is desired, follow the diagram below and change attachments as illustrated. (Diagram C-4)

Maintaining Your Kambrook Hair Clipper

Cleaning

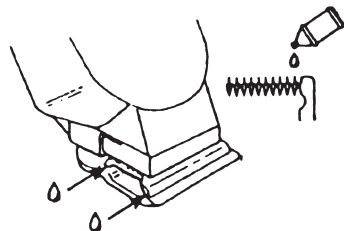
After you have finished using your hair clipper rapidly move the adjustable lever up and down a couple of times while the hair clipper is still running, to remove any hair that may be caught in between the blades. Then switch off the appliance and power outlet. Then unplug your hair clipper and clean the blades with the brush supplied.

Oiling

To maintain the hair clipper in peak condition, the blades should be regularly oiled before, during and after every haircut. A substitute/replacement for the clipper oil supplied in the kit is household sewing machine oil.

NOTE: Do not use hair oil, grease, oil mixed with kerosene or solvent, as the solvent will evaporate and leave the thick oil, which may slow down the blade motion.

To oil the blades, gently squeeze a few drops of oil between the blade teeth and turn the clipper on, checking that the clipper is running smoothly.



If the blades are dulled and have stopped cutting, replace them with new blades from your nearest Kambrook service centre.



KAMBROOK 12 MONTH

REPLACEMENT WARRANTY

KAMBROOK warrants the purchaser against defects in workmanship and material, for a period of 12 months from the date of purchase (3 months commercial use).

Guarantee and purchase receipt for this product are to be retained as proof of purchase and must be presented if making a claim under the terms of the KAMBROOK guarantee.

KAMBROOK reserves the right to replace or repair the appliance within the warranty period.

Warranty does not apply to any defect, deterioration, loss or injury or damage occasioned by, or as a result of the misuse or abuse, negligent handling or if the product has not been used in accordance with the instructions. The guarantee excludes breakages and consumable.

This warranty is void if there is evidence of the product being tampered with by unauthorised persons.

If the product includes one or a number of accessories only the defective accessory or product will be replaced.

In the event of KAMBROOK choosing to replace the appliance, the guarantee will expire at the original date, ie. 12 months from the original purchase date.

In Australia, this KAMBROOK Guarantee is additional to the conditions and guarantees which are mandatory as implied by the Trade Practises Act 1974 and State Territory legislation.

For service, spare parts or product information in Australia, please call KAMBROOK on the customer Service Line (free call) 1800 800 634.

For service, spare parts or product information in New Zealand, please call KAMBROOK New Zealand, Mono Place, Ellerslie, Auckland.

Phone 0800 253 007, FAX 0800 263 001.

If claiming under this guarantee the product must be returned to freight prepaid.

YOUR PURCHASE RECORD (Please complete)

Attach purchase receipt here.

DATE OF PURCHASE _____

MODEL NUMBER _____

SERIAL NUMBER (If applicable) _____

PURCHASED FROM _____

Please don't return purchase record unless you are making a claim

KAMBROOK



Kambrook 4 Kingston Town Close Oakleigh, Victoria 3166, Australia
Customer Service Line (free call) 1800 800 634 Customer Service Fax 1800 621 337
Kambrook (New Zealand) Mono Place Ellerslie, Auckland, New Zealand
Customer Service Line/Spare Parts 0800 253 007 Customer Service Fax 0800 263 001

Free Manuals Download Website

<http://myh66.com>

<http://usermanuals.us>

<http://www.somanuals.com>

<http://www.4manuals.cc>

<http://www.manual-lib.com>

<http://www.404manual.com>

<http://www.luxmanual.com>

<http://aubethermostatmanual.com>

Golf course search by state

<http://golfingnear.com>

Email search by domain

<http://emailbydomain.com>

Auto manuals search

<http://auto.somanuals.com>

TV manuals search

<http://tv.somanuals.com>