

KAMBROOK

THE SMARTER CHOICE



**Hang-Up
Hair Dryer**

KHH100

Instruction Booklet

Important

Please retain your instruction book for future use.

In the event that you need some assistance with your Kambrook appliance, please contact our Customer Service Department on 1300 139 798 (Australia) or 0800 273 845 (New Zealand). Alternatively, visit us on our website at www.kambrook.com.au or www.kambrook.co.nz

Contents

Kambrook Recommends Safety First	p4
Your Kambrook Hair Dryer	p6
Operating Your Kambrook Hair Dryer	p8
Using Your Kambrook Hair Dryer	p9
Care, Cleaning and Storage	p10

Kambrook Recommends Safety First

IMPORTANT: Please retain your instruction book for future use.

At Kambrook, we believe that safe performance is the first priority in any consumer product, so that you, our valued customer can confidently use and trust our products. We ask that any electrical appliance that you use be operated in a sensible fashion with due care and attention placed on the following important operating instructions.

Important Safeguards For Your Kambrook Hang-Up Hair Dryer

- Use only on 230-240 volt AC, 50Hz mains voltage.
- This appliance is not intended for use by young children or infirm persons unless they have been adequately supervised by a responsible person to ensure that they can use the appliance safely.
- Do not allow liquids to spill on the plug or cord. Do not use where it can fall or be pulled into water. Do not reach for an appliance that has fallen into water. Switch off and unplug immediately. Do not use this appliance out of doors.
- Do not use with an extension cord.
- NEVER use while bathing or showering or standing on a damp floor, or while your hands or the unit are wet.
- Do not use on any wet surface or any soft surface, such as a bed, where the unit may be covered.
- Always switch off and remove the plug whenever the unit is not in use.
- Always turn the power off at the power outlet before removing the plug. Remove by grasping the plug - do not pull on the cord.
- Clean carefully with a soft, moist cloth. Allow to dry thoroughly before connecting to the power outlet.
- Do not store whilst hot or whilst connected to the power outlet.
- To avoid overheating, do not block any openings of the hair dryer.
- Never probe any opening to remove fluff or hair. On regular occasions, disconnect the unit from the power supply and use a vacuum cleaner to clean.
- Do not leave small objects such as clips or pins where they can enter the unit and cause a safety hazard.
- Do not allow the unit or the cord to contact any hot surface, or to trail over the edge of a bench.
- Do not use accessory attachments, other than those supplied by the manufacturer.
- Do not direct hot air towards the eyes or other heat-sensitive areas.
- Avoid use on or near heat sensitive material, synthetic wigs or hair pieces, where aerosol products are being used or where oxygen is being administered.
- Never operate the appliance with a damaged plug or cord, or after it has been damaged or dropped or immersed in water. Return the unit to your nearest Kambrook Service Centre or Authorised Service Agent for inspection and if necessary, repair.

- Do not twist, kink or wrap the cord tightly around the appliance, as this may cause the plastic insulation to weaken and split (particularly where the cord enters the appliance or joins the plug) thus allowing the cord's wiring to be bared and become an electrical hazard. If the cord becomes twisted, return it to your Kambrook Service Centre or Authorised Service Agent for checking or replacement.
- When the hair dryer is used in a bathroom, unplug it after use since the proximity of water presents a hazard even when the hair dryer is switched off.
- For additional protection the installation of a residual current device (RCD) with a rated residual operating current not exceeding 30mA is advisable in the electrical circuit supplying the bathroom. Ask your installer for advice.



IMPORTANT: For safety reasons, and to avoid tampering by unskilled persons, this unit is factory sealed, as specified by electrical authorities. If service is required, it should only be carried out by a Kambrook Service Centre or Authorised Service Agent.

Important Safeguards For All Electrical Appliances

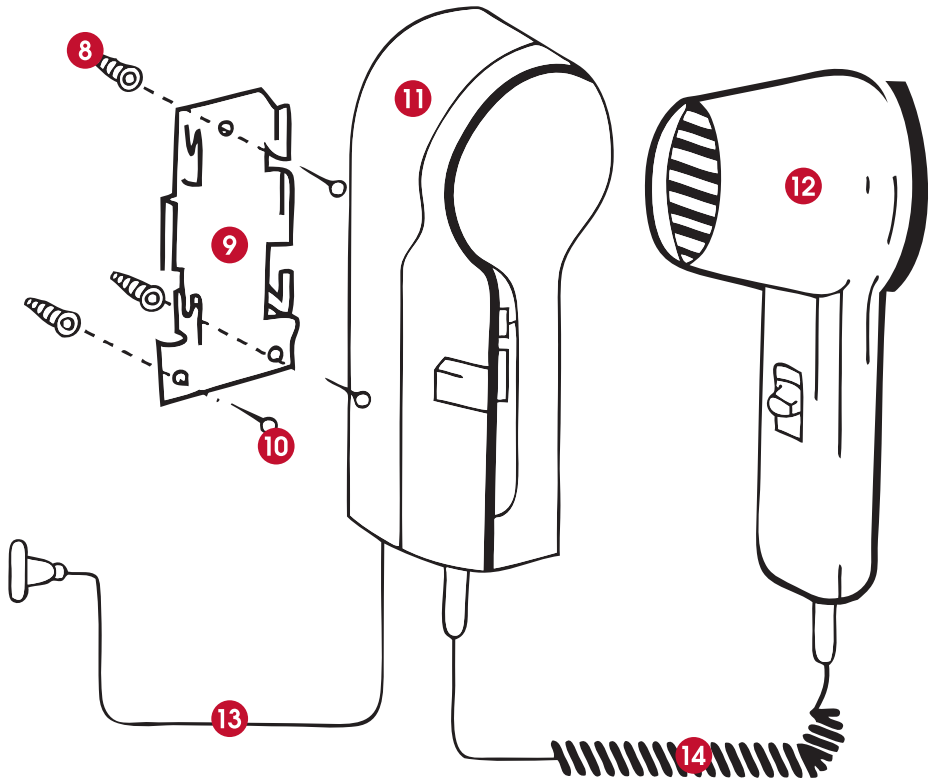
- Carefully read all instructions before operating the appliance and save for future reference.
- Remove and safely discard all packaging material and promotional labels before using the appliance for the first time.
- Fully unwind the power cord before use.
- Do not let the power cord hang over the edge of a bench or table, touch hot surfaces or become knotted.
- To protect against electric shock, do not immerse the power cord, power plug or appliance in water or any other liquid, unless it is recommended in the cleaning instructions.
- The appliance is not intended for use by persons (including children) with reduced physical, sensory or mental capabilities, or lack of experience and knowledge, unless they have been given supervision or instruction concerning use of the appliance, by a person responsible for their safety.
- Children should be supervised to ensure that they do not play with the appliance.
- It is recommended to inspect the appliance regularly. Do not use the appliance if the power supply cord, plug, connector or appliance becomes damaged in anyway. Return the entire appliance to the nearest authorised Kambrook Service Centre for examination and/or repair.
- Any maintenance other than cleaning should be performed at an authorised Kambrook Service Centre.
- This appliance is for household use only. Do not use this appliance for other than its intended use. Do not use in moving vehicles or boats. Do not use outdoors. **Misuse may cause injury.**
- The installation of a residual current device (safety switch) is recommended to provide additional safety protection when using electrical appliances. It is advisable that a safety switch with a rated residual operating current not exceeding 30mA be installed in the electrical circuit supplying the appliance. See your electrician for professional advice.
- Always turn the appliance to the OFF position, switch off at the power outlet and unplug at the power outlet when the appliance is not in use.
- Before cleaning, always turn the appliance to the OFF position, switch off at the power outlet, unplug at the power outlet and remove the power cord, if detachable, from the appliance and allow all parts to cool.
- Do not place this appliance on or near a heat source, such as hot plate, oven or heaters.
- Position the appliance at a minimum distance of 20cm away from walls, curtains and other heat or steam sensitive materials and provide adequate space above and on all sides for air circulation.

Your Kambrook Hang-Up Hair Dryer

1. 1200 watts of power
2. ON button
3. OFF button
4. 3 combinations for heat and speed
5. Wall mountable for convenience
6. Removable rear grille for easy cleaning
7. Release button



- 8.** Anchor bushing
- 9.** Bracket
- 10.** Screw
- 11.** Wall mount
- 12.** Hair dryer
- 13.** Power supply cord
- 14.** Spiral power cord



Operating Your Kambrook Hang-Up Hair Dryer

Hang-Up Hair Dryer Mounting Instructions

The Kambrook Hang Up Dryer is designed to mount onto the wall using the following procedure:

1. Remove wall bracket from unit.
2. Use the wall bracket as a template to mark position of holes for drilling close to electrical outlet, away from bath or vanity basin.
3. Drill three 4.5mm (3/16") holes and insert the anchor bushings by tapping lightly with a hammer until the shoulder of the bushing rests against the wall.
4. Position wall bracket aligned with the holes then tighten the two bottom screws first, then tighten the top screw.
5. Match the slots on the back of the mounting base with the hooks of the bracket.
6. Press into the hooks and slide down to ensure secure mounting.
7. Plug unit into the nearby electrical outlet(230-240 volt AC-50Hz).

How To Operate

1. After washing, towel dry hair.
2. Press release buttons to remove dryer.
3. To start the dryer, press the On button on the wall mount unit.
4. Slide the control switch to: LOW position for styling hair MED position for drying hair HIGH for fast drying hair
5. To stop the dryer, just hang it into the mounting base which will automatically switch the unit OFF or push the OFF button.



IMPORTANT: Do not install where a person in a bath or shower can reach the unit on the wall or reach the hand-held part when the cord is fully extended.

Using Your Kambrook Hang-Up Hair Dryer

To Style and Dry Hair

- For layered style, brush your hair away from it's natural lay.
- For longer hair you should start by drying the back first. Then part your hair across the top of your head (from ear to ear). Brush your hair to one side and then the other. Then dry the front of your hair.
- To make your hair flick, place brush on outside of hair. As you brush down towards the end of your hair, turn the ends upwards.
- To make your hair turn under; place the brush on the underside of your hair. As you brush downward, turn the brush toward your head.
- To straighten hair; hold the hair straight and taut with a brush and dry hair with high setting.
- Full hair style. For a full casual style brush, dry hair from underneath and against the natural direction of growth .
- Styling - The final touches: Styling is usually best done after your hair is nearly dry. Speed and heat should usually be set on the LOW setting for final styling.

Care, Cleaning and Storage

Power Unit and Base

Always unplug unit before cleaning, use a damp cloth to wipe base and unit.

Rear screen

It is important that you clean the rear intake grill when hair, lint or dust begins to build up on it. To make this easy, Kambrook has made the rear screen removable. To remove the screen simply rotate the screen anti-clockwise and loosen. Clean using a toothbrush or similar to loosen lint etc. Turn screen over and wash it in water from a running tap. Towel dry the screen thoroughly. Check the inside screen and if dirty brush gently with a DRY toothbrush.

To Replace Screen

Line up pages on inside of screen with slots on side of unit and rotate clockwise to lock screen in place.

Storage of Your Hang-Up Hair Dryer

Always store the dryer inside the wall mount base. Do not mount your dryer in an area where there is excessive heat or moisture.



IMPORTANT: If the supply cord or spiral power cord of this appliance is damaged it must only be replaced by a repair shop appointed by the manufacturer because special purpose tools are required.

Kambook - Australia

Building 2, Port Air Industrial Estate
1A Hale Street
Botany NSW 2019
Australia
Customer Service Line 1300 139 798
Customer Service Fax 1800 621 337

www.kambook.com.au

Kambook - New Zealand

Private Bag 94411
Botany, Manukau
Auckland 2163
New Zealand
Customer Service Line/
Spare Parts 0800 273 845
Customer Service Fax 0800 288 513

www.kambook.co.nz

KAMBROOK
THE SMARTER CHOICE

Due to continual improvement in design or otherwise, the product you purchase may differ slightly from the illustration in this book. Issue A11

Free Manuals Download Website

<http://myh66.com>

<http://usermanuals.us>

<http://www.somanuals.com>

<http://www.4manuals.cc>

<http://www.manual-lib.com>

<http://www.404manual.com>

<http://www.luxmanual.com>

<http://aubethermostatmanual.com>

Golf course search by state

<http://golfingnear.com>

Email search by domain

<http://emailbydomain.com>

Auto manuals search

<http://auto.somanuals.com>

TV manuals search

<http://tv.somanuals.com>