



Ci500AW

Information Sheet



For a serious all-weather loudspeaker look to KEF's Ci Series Ci500AW.

In the summerhouse or by the pool, this is a complete all-rounder, featuring an ABR box design with an integral, swivelling mounting bracket.

Along with the drivers, both the terminals and mounting bracket are weather-resistant,

making positioning of this loudspeaker, even in the harshest environments like patios or even ocean-going yachts, extremely versatile.

Imagine KEF acoustic quality in outdoor sound and think of the Ci500AW delivering a solid, richly detailed sound virtually anywhere you care to place it.

Features and Benefits:

The 2-way Ci500AW combines 70W power handling and 87dB sensitivity for a maximum output of 105dB.

A 130mm (5¼") polypropylene bass/mid driver working in conjunction with an Auxiliary Bass Radiator (ABR) for increased low frequency output, is partnered by a 25mm (1") soft dome tweeter.

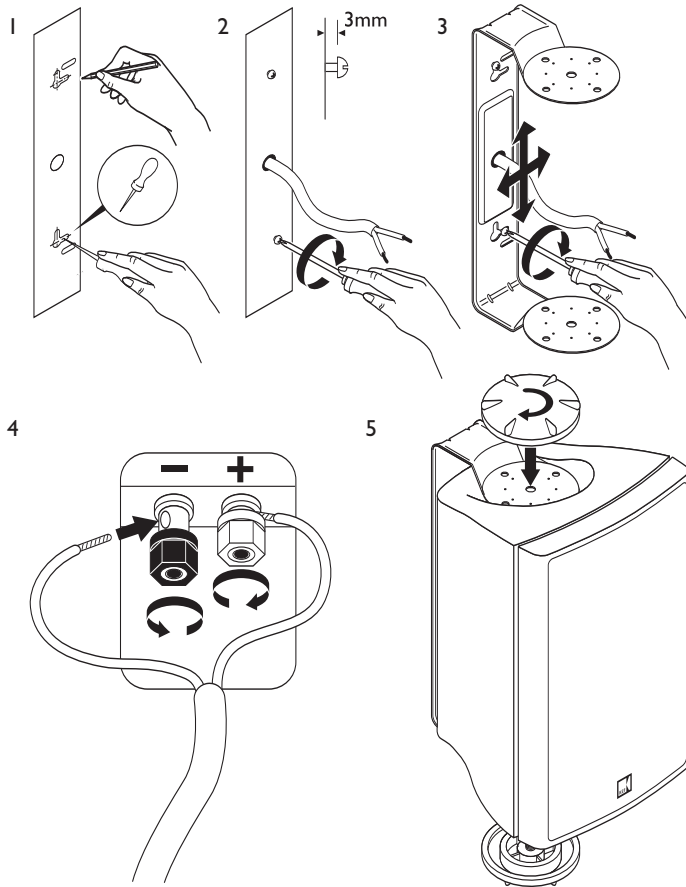
The white, moulded ABS enclosure and stainless steel grille are easily paintable.

Ci series
custom installation speakers

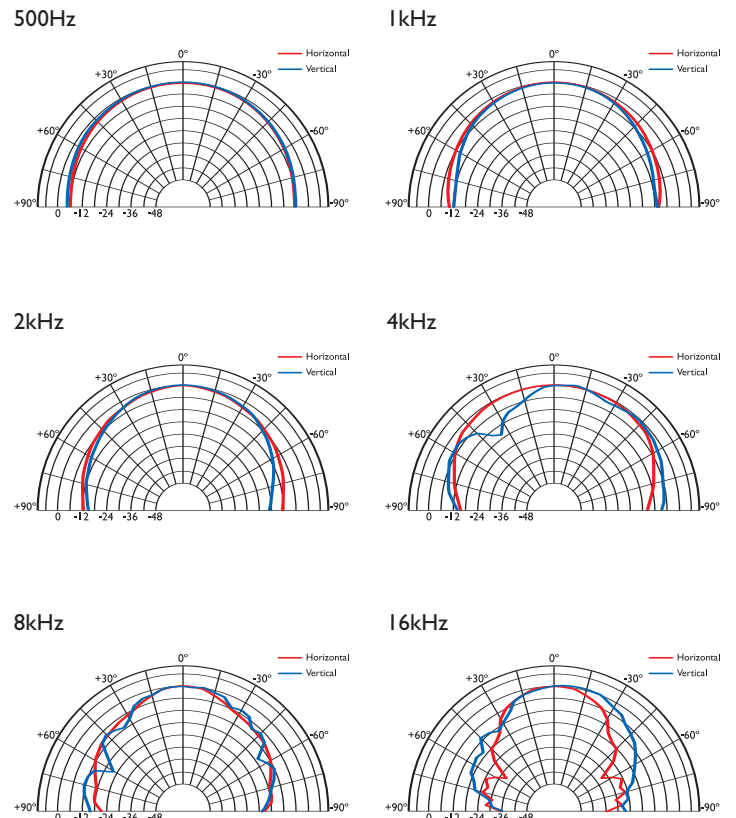


Ci500AW

Installation



Polar graphs



Architectural specifications:

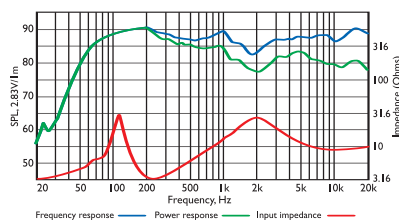
The Ci Series Ci500AW comprise a 25mm soft dome ferrofluid cooled tweeter with 130mm polypropylene bass/mid unit and Auxiliary Bass Radiator. Performance should meet or exceed the following criteria: frequency response 1 metre on-axis with swept sine wave shall

be 60Hz to 20 kHz, sensitivity shall be at least 87dB for 2.83V@1m.

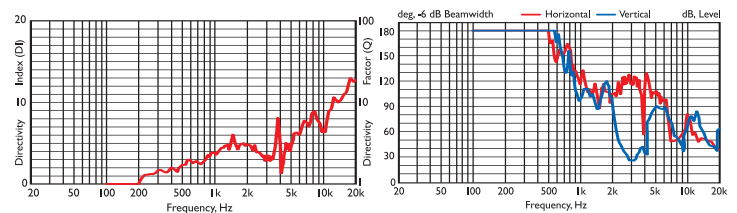
The impedance and maximum power shall be 70W at 4 ohms. The Ci Series Ci500AW is best suited where high quality music and speech reinforcement applications require hi-fi performance in all weather such as:

- Patios.
- Maritime and Sailing.
- Zoos.
- Theme Parks.
- Sports Arenas.

Frequency / Power response, Input impedance



Directivity Index / Beamwidth



Specifications

Frequency range	60Hz - 20kHz
Sensitivity (2.83v @ 1m)	87dB
Rec. amplifier power	10 - 70W
Nominal Impedance	4Ω (min. 3.2Ω)
Crossover Frequency	3kHz

Enclosure material	Polycarbonate
Terminals	binding posts up to Ø5mm (0.2") conductor
Dimensions (H x W x D)	290 x 180 x 173 mm, 11.5 x 7.1 x 6.9 in.
Net weight	3.5kg (7.7lbs)

Free Manuals Download Website

<http://myh66.com>

<http://usermanuals.us>

<http://www.somanuals.com>

<http://www.4manuals.cc>

<http://www.manual-lib.com>

<http://www.404manual.com>

<http://www.luxmanual.com>

<http://aubethermostatmanual.com>

Golf course search by state

<http://golfingnear.com>

Email search by domain

<http://emailbydomain.com>

Auto manuals search

<http://auto.somanuals.com>

TV manuals search

<http://tv.somanuals.com>