



Assembly Instructions

Description:	CB Radio Kit	Model:	Vulcan 1700 Voyager
Part Number:	K10400-037	Approximate Assembly Time:	60 min.

Installation of this accessory should be performed by a qualified technician with the proper tools and equipment.

If you are in doubt as to any part of the installation, please ask your authorized Kawasaki dealer to complete the installation. Please note that Kawasaki cannot assume any responsibility for damage resulting from incorrect installation.

Parts List			Tools Required:
Seq.	Description	Qty	Tool Description
1.	CB Radio Module Assembly	1	<ul style="list-style-type: none"> ▪ Drill Motor ▪ Scribe ▪ 1/16" Drill Bit ▪ 7mm (1/4") Drill Bit ▪ 5mm Hex Head Driver ▪ Socket Driver ▪ 10mm Socket ▪ Philips Head Screwdriver
2.	M6 x 30mm Bolts	2	
3.	CB Antenna Cable	1	
4.	CB Antenna Base	1	
5.	M6 x 20mm Philips Head Bolt	1	
6.	CB Ground Strap	1	
7.	M6 Lock Nuts	2	
8.	Lock Washer	1	
9.	Belleville Washer	1	
10.	M6 Cap Nut	1	
11.	Cable Ties, 6 inch	8	
12.	Cable Tie, 14.5 inch	1	
13.	CB Antenna Mast	1	
14.	Star Washer	1	

Installation Instructions

Installation Preparation

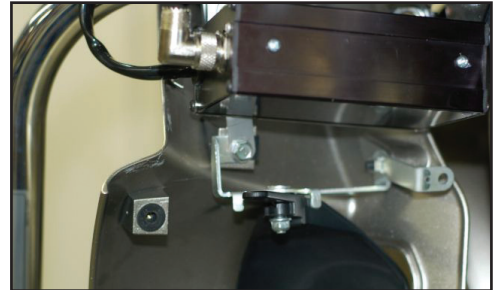
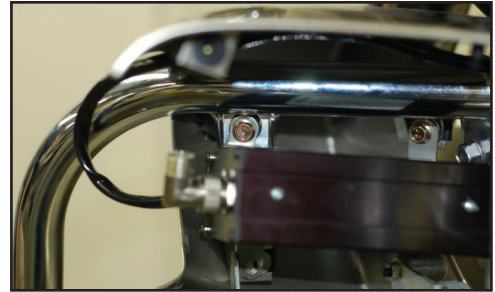
Parts Removal

- Set bike securely on side stand on level ground. Switch off ignition and remove key.
- Refer to the VN1700 Voyager Service Manual and remove the fairing. Remove the front and rear seats, fairing and left fairing lower cover (black piece).
- Open the trunk and remove the tray by pressing the center of the four lock rivets.
- Remove the fuel tank mounting bolts and lift the tank to expose the frame.

Installation

Install CB Module

- Mount the CB module using the two supplied 6 x 30mm bolts on the top and re-using the lower bolt. Tighten all three bolts firmly but do not over tighten as this may damage the plastic fairing lower.



- Route the harness from the CB module behind the left engine guard and into the left side of the fairing. Find the matching multi-pin connector at the left side of the radio and connect to the CB module harness. Press the connectors together firmly to engage the waterproof seals. Secure the cables as needed with provided cable ties.

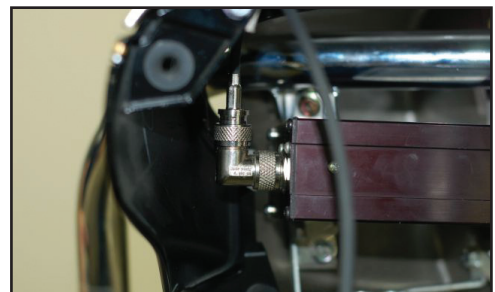


NOTE

- If the optional XM Radio K10400-038 will also be installed, a K10400-042 Splitter Cable (sold separately) will also be needed to connect both XM and CB to the OE radio.

Install CB Antenna

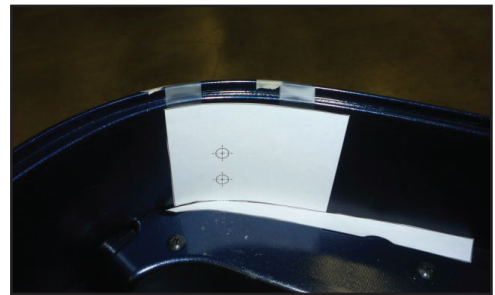
- Connect the threaded end of the CB antenna cable to the right-angle fitting on the CB module and firmly hand tighten.



- Route the other end of the antenna cable along the chassis and under the center of fuel tank. Follow the routing of the AM/FM antenna cable to the rear and into the trunk. Continue to route the CB antenna cable along the left and rear of the trunk to the right rear corner. Secure the cable with wire ties.



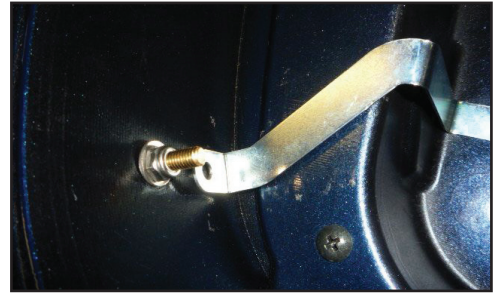
- Cut the antenna base drilling template out of the instruction sheet. Carefully fold it at the score lines and tape to the inside right rear corner of the trunk as shown.



- Carefully mark the center of the holes with a scribe and drill pilot holes from the inside of the trunk using a 1/16" bit. Finish drilling the holes from the outside using a 7mm (1/4") bit.



- Install the antenna base from the outside of the trunk. Install Belleville (curved) washer and locknut onto the threaded brass post. Do not over-tighten as this may damage the plastic base.



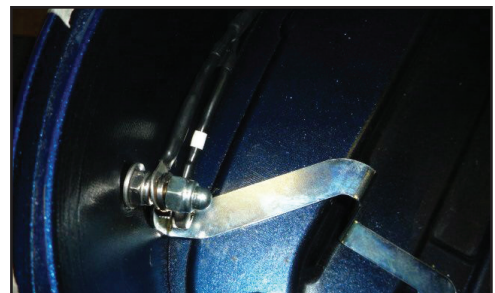
- Remove the right rear trunk bolt and install the provided metal grounding bracket at this point and to the lower mounting hole of the antenna base.



- Connect the black wire with white marking tape from the CB antenna cable to the lower threaded hole in the antenna base with the provided Philips head screw.



- Install remaining ring terminal from the antenna cable onto the brass post and lock down with lock washer and cap nut.
- Install the antenna mast with star washer and confirm the vertical positioning of the mast matches that of the AM/FM antenna. Adjust the positioning of the AM/FM antenna accordingly. Tighten the mast securely but do not over tighten.



NOTE

- Do not use thread locking compound on the threads of the antenna mast as this may damage the plastic.
- Switch the ignition to “accessory” and turn the radio on, then follow the Owners Manual to select the “CB on” function. The CB channel in the lower left corner of the radio display should show the CB channel number. If the channel number does not show, check all connections and the accessory fuse. After proper CB operation is confirmed, switch off the ignition.

- After confirming proper operation of the CB radio, reinstall the fairing, left fairing lower, lower cover, front and rear seats, and tank. Check carefully to be sure that the wires are not caught or pinched. Install the trunk tray with the four press rivets and close and lock the trunk lid.

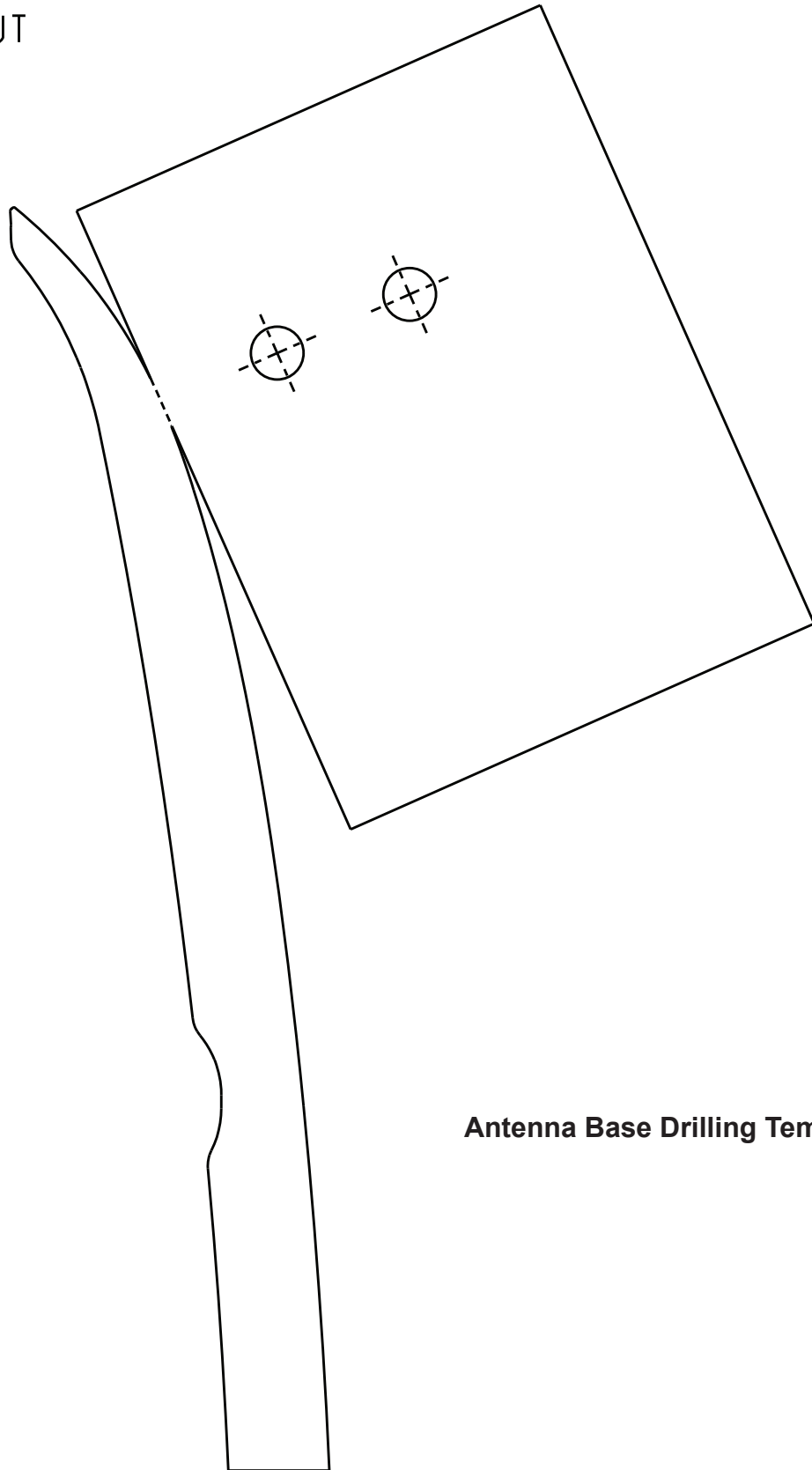
NOTE

- *Wipe the CB antenna clean with a soft damp cloth. Do not use any harsh abrasive cleaners. The CB module and connectors are water resistant for normal inclement riding conditions only. Do not direct water at any component.*

Please check/adjust all fasteners in regular intervals.

----- FOLD

————— CUT



Antenna Base Drilling Template

Free Manuals Download Website

<http://myh66.com>

<http://usermanuals.us>

<http://www.somanuals.com>

<http://www.4manuals.cc>

<http://www.manual-lib.com>

<http://www.404manual.com>

<http://www.luxmanual.com>

<http://aubethermostatmanual.com>

Golf course search by state

<http://golfingnear.com>

Email search by domain

<http://emailbydomain.com>

Auto manuals search

<http://auto.somanuals.com>

TV manuals search

<http://tv.somanuals.com>