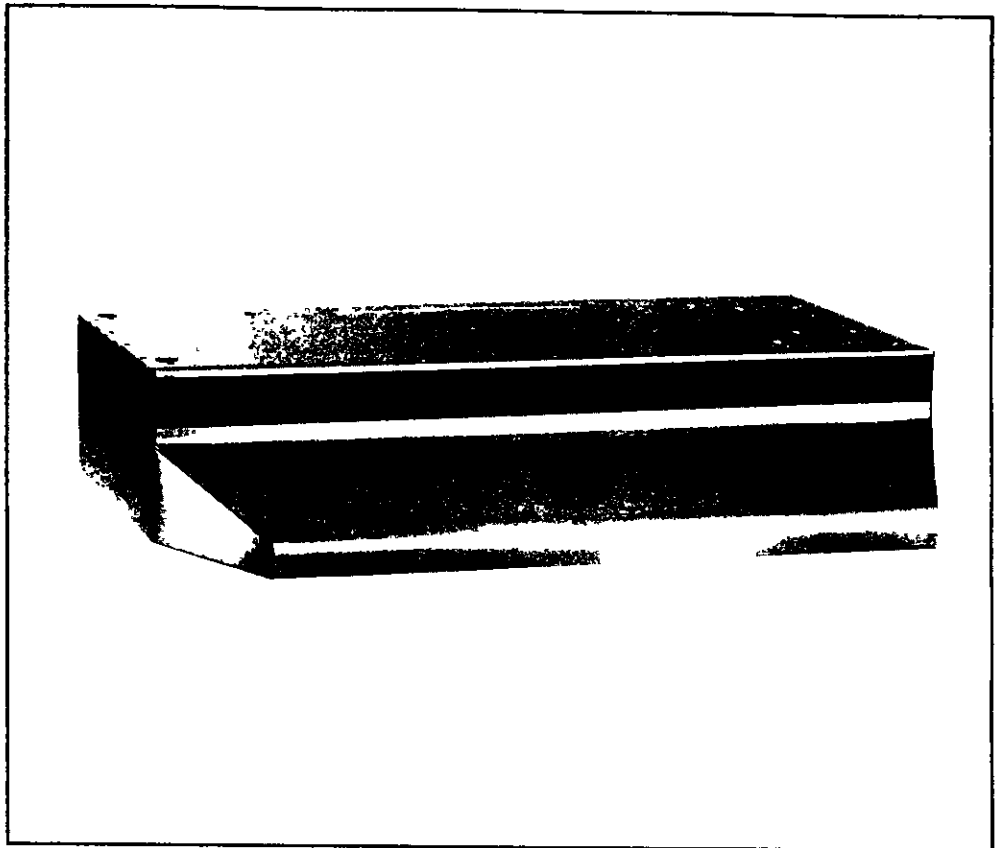


SEARS

OWNER'S MANUAL

Model Nos.
233.52045590
233.52145590

Caution:
Read and follow
all **Safety Rules** and
Operating Instructions
before first use of this
Product.



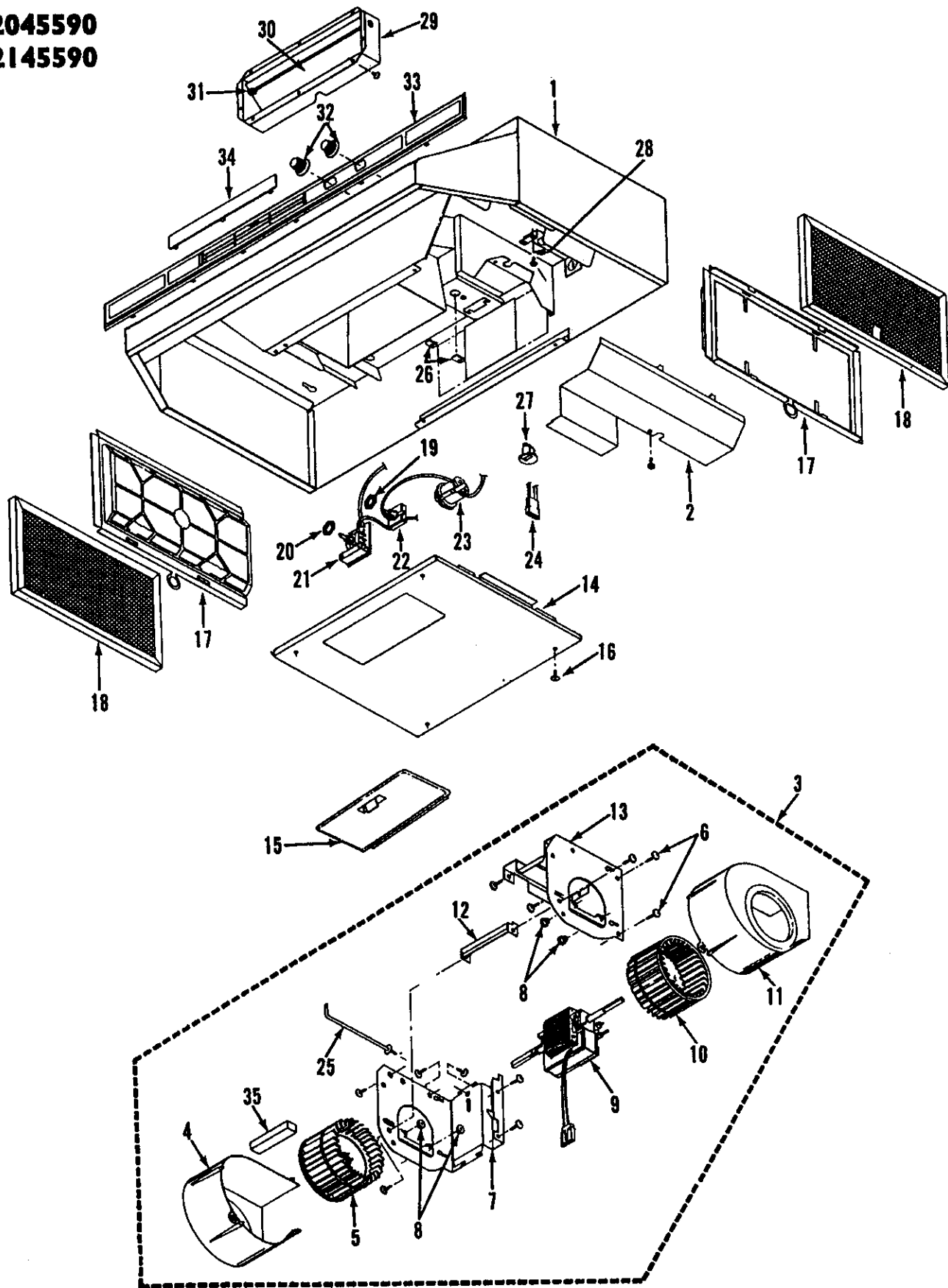
Kenmore

RANGE HOOD

- ◆ **Safety Instructions**
- ◆ **Warranty**
- ◆ **Operation**
- ◆ **Care and Maintenance**
- ◆ **Wiring Diagram**
- ◆ **Parts List**

Sears, Roebuck and Co., Hoffman Estates, IL 60179 U.S.A.

MODEL NOS.
233.52045590
233.52145590



PARTS LIST

KEY NO.	PART NUMBER	DESCRIPTION
1	97009045	Canopy - 30" White (233.52045590)
	97009046	Canopy - 30" Almond (233.52045590)
	97009047	Canopy - 30" Stainless Steel (233.52045590)
	97010744	Canopy - 30" Black (233.52045590)
	97010440	Canopy - 36" White (233.52145590)
	97009048	Canopy - 36" Almond (233.52145590)
	97009049	Canopy - 36" Stainless Steel (233.52145590)
	97010745	Canopy - 36" Black (233.52145590)
2	98006574	Outlet Box Cover
3	97009721	Blower Assembly - Complete (Includes Key Nos. 4 thru 13)
4	99110518	Scroll Housing for Blower - Counterclockwise
5	99020150	Blower Wheel - Counterclockwise
6	99150490	Sheet Metal Screw 10-16 x 3/4 PH Truss Head
7	98008836	Frame Half - Counterclockwise
8	99100497	Rubber Isolation Mount
9	99080156	Motor
10	99020149	Blower Wheel - Clockwise
11	99110519	Scroll Housing for Blower - Clockwise
12	98005573	Cross Brace
13	98005572	Frame Half - Clockwise
14	97007953	Bottom Cover - White
	97007957	Bottom Cover - Almond
	97007716	Bottom Cover - Stainless Steel
	97009771	Bottom Cover - Black
15	97013316	Light Lens
16	99150478	Sheet Metal Screw 8-18 x 3/8 PH Truss Head**
17	97007997	Ventless Filter Kit - Contains Two (2) Clean Cooking System II Filters***
18	97007893	Aluminum Filter (Contains 2 Filters)
19	99260470	Nut, 15/32-32 with 9/16 Flats*
20	99260422	Nut, 3/8-32*
21	97007159	Motor Speed Control Switch
22	97005812	Light Switch
23	99270536	Bulb Holder
24	97005679	Motor Receptacle with Wires
25	99420458	Blower Retainer Rod
26	99260473	Tinnerman Nut, U10-24 C1379*
27	99400042	Strain Relief Bushing, SR-4N-4*
28	99150471	Self-Tapping Screw, 10-32 x 1/2 Green Binder*
29	97005544	Damper Assembly (Includes Key Nos. 30 & 31)
30	98005221	Damper Flap
31	99100379	Damper Bushing
32	99360118	Knob, Black (2 Required)
	99360228	Knob, White (2 Required)
	99360229	Knob, Almond (2 Required)
33	99090952	Control Panel, 30" Black
	99090954	Control Panel, 30" White
	99090956	Control Panel, 30" Almond
	99090953	Control Panel, 36" Black
	99090955	Control Panel, 36" White
34	99090957	Control Panel, 36" Almond
	99090457	Control Panel Cover, Black
	99090829	Control Panel Cover, White
35	99090958	Control Panel Cover, Almond
	99100441	Seal Foam (2 Required) (Ventless Installation Only)***
**	97007501	Diode Assembly
**	-----	Light Bulb, 75 Watt (Not Supplied with Hood)
**	99042173	Installation Instructions
**	99042169	Operating Instructions and Parts List

* Standard Hardware. May be purchased locally.

** Not Illustrated.

*** For use in Ventless configurations only.

Free Manuals Download Website

<http://myh66.com>

<http://usermanuals.us>

<http://www.somanuals.com>

<http://www.4manuals.cc>

<http://www.manual-lib.com>

<http://www.404manual.com>

<http://www.luxmanual.com>

<http://aubethermostatmanual.com>

Golf course search by state

<http://golfingnear.com>

Email search by domain

<http://emailbydomain.com>

Auto manuals search

<http://auto.somanuals.com>

TV manuals search

<http://tv.somanuals.com>