

KENWOOD

PORTABLE MINIDISC PLAYER

DMC-K3

INSTRUCTION MANUAL

KENWOOD CORPORATION

Accessories

Check that the following accessories are present.

AC adaptor (1)	Remote control unit (1)
Stereo headphone (1)	Carrying case (1)
Rechargeable battery NB-150 (1)	



B60-4092-00 00 (JA) (K, T) (AP) 9811

Separately sold option part

Rechargeable Nickel Metal Hydride Battery	NB-150S (1 piece)
Car battery adaptor	DC-C70
Car cassette adaptor	CAC-2

KENWOOD

For your records

Record the serial number, found on the back panel of the unit, in the spaces designated on the warranty card, and in the space provided below. Refer to the model and serial numbers whenever you call upon your dealer for information or service on this product.

Model _____ Serial Number _____

Introduction

Unpacking

Unpack the unit carefully and make sure that all accessories are put aside so they will not be lost.

Examine the unit for any possibility of shipping damage. If your unit is damaged or fails to operate, notify your dealer immediately. If your unit was shipped to you directly, notify the shipping company without delay. Only the consignee (the person or company receiving the unit) can file a claim against the carrier for shipping damage.

We recommend that you retain the original carton and packing materials for use should you transport or ship the unit in the future.

Keep this manual handy for future reference.

Before applying power

Caution : Read this page carefully to ensure safe operation.

Units are designed for operation as follows.

U.S. A. and Canada **AC 120 V only**
U.K. and Europe **AC 230 V only**

Safety precautions

WARNING: TO PREVENT FIRE OR ELECTRIC SHOCK, DO NOT EXPOSE THIS APPLIANCE TO RAIN OR MOISTURE.

The marking of products using lasers (Except for some areas).

**CLASS 1
LASER PRODUCT**

The marking is located on the bottom panel and says that the component uses laser beams that have been classified as Class 1. It means that the unit is utilizing laser beams that are of a weaker class. There is no danger of hazardous radiation outside the unit.

IMPORTANT SAFEGUARDS

Caution : Read this page carefully to ensure safe operation.

Please read all of the safety and operating instructions before operating this unit. For best results, follow all warnings placed on the unit and adhere to the operating and use instructions. These safety and operating instructions should be retained for future reference.

- Power sources** — The unit should be connected to a power supply only of the type described in the operating instructions or as marked on the appliance.
- Power-cord protection** — Power-supply cords should be routed so that they are not likely to be walked on or pinched by items placed upon or against them, pay particular attention to cords at plugs, convenience receptacles, and the point where they exit from the unit.
- Enclosure removal** — Never remove the enclosure. If the internal parts are touched accidentally, a serious electric shock might occur.
- Drop** — Do not drop the unit or apply strong shock to it. (Damage due to dropping the unit is not covered by the warranty.)
- Ventilation** — Avoid hindering the ventilation of the unit by covering it with a cloth, etc.
- Abnormal smell** — If an abnormal smell or smoke is detected, immediately turn the power OFF and pull out the power cord. Contact your dealer or nearest service center.
- Heat** — Avoid placing the unit under direct sunlight or near a source of heat such as heating equipment. Particularly, never leave it in an automobile or on the dashboard.
- Temperature** — The unit may not function properly if used at extremely low, or freezing temperatures. The ideal ambient temperature is above +5°C (41°F).
- Water and moisture** — The unit should not be used near water — for example, near a bathtub, washbowl, kitchen sink, laundry tub, in a wet basement, or near a swimming pool, etc.
- Dust and moisture** — Avoid places where is dusty or where the humidity is high.
- Vibrations** — Avoid placing the unit on an unstable place such as a shelf or in a place subject to vibrations.
- Magnetic fields** — Keep the unit away from sources of magnetic fields such as TV sets, speaker systems, radios, motorized toys or magnetized objects.
- Cleaning** — Do not use volatile solvents such as alcohol, paint thinner, gasoline, or benzine, etc. to clean the cabinet. Use a clean dry cloth.
- Nonuse periods** — The power cord of the unit should be unplugged from the outlet when left unused for a long period of time.
- Damage requiring service** — The unit should be serviced by qualified service personnel when:
 - The power-supply cord or the plug has been damaged.
 - Objects have fallen, or liquid has been spilled into the unit.
 - The unit has been exposed to rain.
 - The unit does not appear to operate normally or exhibits a marked change in performance.
 - The unit has been dropped, or the enclosure damaged.
- Servicing** — The user should not attempt to service the unit beyond that described in the operating instructions. All other servicing should be referred to qualified service personnel.
- CAUTION** — TO PREVENT ELECTRIC SHOCK DO NOT USE THE AC PLUG WITH AN EXTENSION CORD, RECEPTACLE OR OTHER OUTLET UNLESS THE BLADES CAN BE FULLY INSERTED TO PREVENT BLADE EXPOSURE.

For rechargeable battery

WARNING

- + Use specified charger only.
- + Do not disassemble or mutilate, cause burns.
- + Do not incinerate or heat, may cause burns, burst or release toxic materials.
- + Do not short circuit may cause burns.
- + Keep away from children.



Dear Customer:

Selecting fine audio equipment such as the unit you've just purchased is only the start of your musical enjoyment. Now it's time to consider how you can maximize the fun and excitement your equipment offers. This manufacturer and the Electronic Industries Association's Consumer Electronics Group want you to get the most out of your equipment by playing it at a safe level. One that lets the sound come through loud and clear without annoying blaring or distortion — and, most importantly, without affecting your sensitive hearing.

Sound can be deceiving. Over time your hearing "comfort level" adapts to higher volumes of sound. So what sounds "normal" can actually be loud and harmful to your hearing. Guard against this by setting your equipment at a safe level BEFORE your hearing adapts.

To establish a safe level:

- + Set your volume control at a low setting.
- + Slowly increase the sound until you can hear it comfortably and clearly, and without distortion.

Once you have established a comfortable sound level:

+ Set the dial and leave it there. Taking a minute to do this now will help to prevent hearing damage or loss in the future. After all, we want you listening for a lifetime.

We Want You Listening For A Lifetime

Used wisely, your new sound equipment will provide a lifetime of fun and enjoyment. Since hearing damage from loud noise is often undetectable until it is too late, this manufacturer and the Electronic Industries Association's Consumer Electronics Group recommend you avoid prolonged exposure to excessive noise. This list of sound levels is included for your protection.

Decibel	Example
30	Quiet library, soft whispers
40	Living room, refrigerator, bedroom away from traffic
50	Light traffic, normal conversation, quiet office
60	Air conditioner at 20 feet, sewing machine
70	Vacuum cleaner, hair dryer, noisy restaurant
80	Average city traffic, garbage disposals, alarm clock at two feet.

THE FOLLOWING NOISES CAN BE DANGEROUS UNDER CONSTANT EXPOSURE

90	Subway, motorcycle, truck traffic, lawn mower
100	Garbage truck, chain saw, pneumatic drill
120	Rock band concert in front of speakers, thunderclap
140	Gunshot blast, jet plane
180	Rocket launching pad

Information courtesy of the Deafness Research Foundation.

For the U.S.A.

CAUTION:

Use of controls or adjustments or performance of procedures other than those specified herein may result in hazardous radiation exposure.

In compliance with Federal Regulations, following are reproductions of labels on, or inside the product relating to laser product safety.

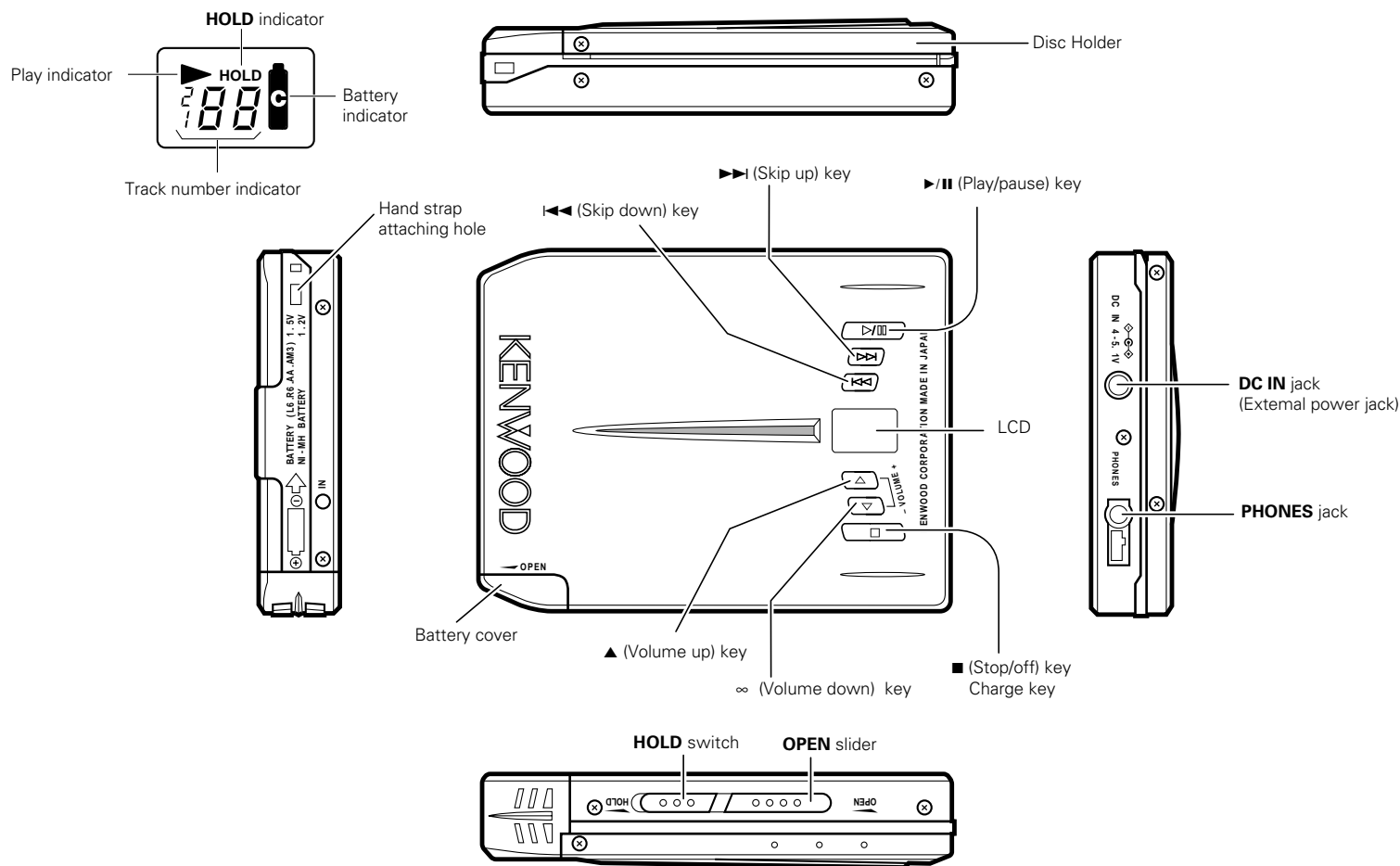
KENWOOD CORPORATION
 2967-3, ISHIKAWA-CHO,
 HACHIOJI-SHI,
 TOKYO, JAPAN

KENWOOD CORP. CERTIFIES THIS
 EQUIPMENT CONFORMS TO DHHS
 REGULATIONS NO. 21 CFR 1040.10,
 CHAPTER 1, SUBCHAPTER J.

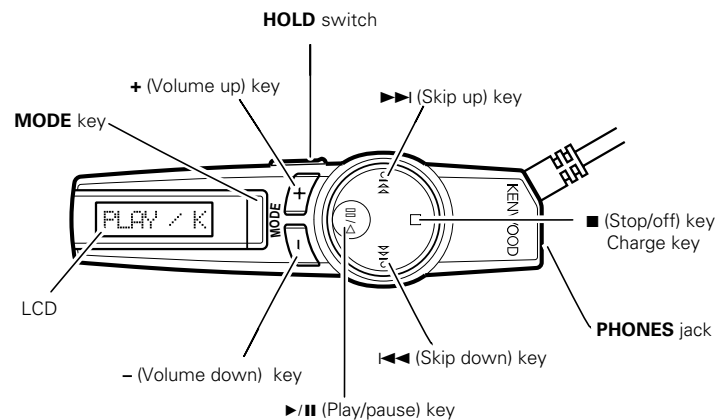
Location: Bottom Panel

Names and functions of parts

Main Unit



Remote Control



MODE key (Only by remote control operation)

Use this key to set playback-related features and other convenient functions. Please also read "Playback (Application)" and "Convenient functions" for details.

The mode changes each time the MODE key is pressed.

- ① Fast forward/fast reverse (search)
- ② Changing the display mode
- ③ Play Mode
- ④ Changing the tone (BASS BOOST)
- ⑤ Original display

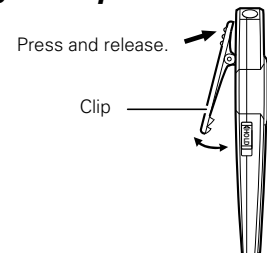
When the MODE key is held depressed for more than 2 seconds:

The mode changes each time the MODE key is pressed.

- ① AUTO PLAY
- ② AUTO POWER SAVE
- ③ Operating tone (Beep)
- ④ Original display

+ To change one of the above set-ups after returning to the original display, restart from the step of pressing and holding the MODE key for more than 2 seconds.

Using the Clip



+ Clip the remote control unit to the edge of your bag or pocket.

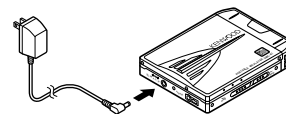
Power sources

Power Supply

The specially provided rechargeable battery, commercially sold AA alkaline battery, the specially provided AC adaptor, the special car battery adaptor, and other power sources can be used for this unit. Use the power supply that suits the application of the unit.

Using the AC adaptor

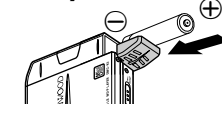
To household outlet



To DC IN jack

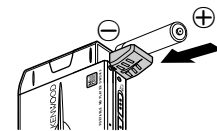
+ AC adaptors may differ depending on the country or sales region.

When Using the Rechargeable Battery



+ Insert the battery making sure the positive (+) and negative (-) poles are correctly aligned.
+ When using the battery for the first time, charge the battery before using it.

When Using Commercially Sold AA Alkaline Battery (LR6)



+ Insert the AA alkaline battery making sure the positive (+) and negative (-) poles are correctly aligned.

For use in a car

Please use the separately sold car battery adaptor (DC-C70) and car cassette adaptor (CAC-2) for listening connected to a car stereo system. Never connect the unit to the external input terminal (AUX input terminal etc.) of a car stereo system, as this will cause malfunctions.

Charging the rechargeable battery

HOLD Function

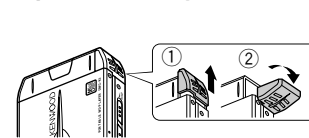
Cancel the HOLD function with the HOLD switch and then operate the keys. When the HOLD function is engaged, the unit will not respond to operation of the keys. For details, refer to "Avoiding Faulty Operation (HOLD)."

The specially provided rechargeable battery is not fully charged. When using it for the first time, charge the battery according to the following procedure.

+ Charge the battery with the power to the unit turned off. (The battery is not charged while the unit is in operation.)

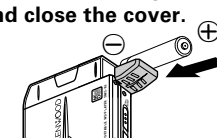
1 Set the rechargeable battery in place.

① Open the battery cover.



① Slide the battery cover up.
② Open the battery cover.

② Insert the rechargeable battery and close the cover.

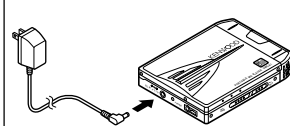


+ Insert the rechargeable battery making sure the positive (+) and negative (-) poles are correctly aligned.

2 Charge the battery.

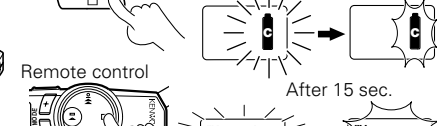
① Connect the specially provided AC adaptor.

To household outlet



To DC IN jack

Main unit Charging check Charging start



(The indication goes out after charging.)

+ If the battery indicator is not displayed though the battery is correctly set up for recharging, the battery life may be expired. In this case, replace the battery with new one.

+ The time needed to charge the battery fully is about 3 hours.

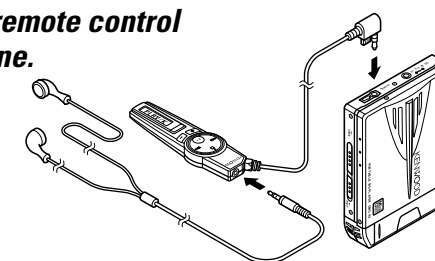
+ A fully charged battery can be used for about 9 hours. (Playing time may differ slightly depending on the environment the unit is used in.)

Playback (Basics)

Playback

Cancel the HOLD function with the HOLD switch and then operate the keys. When the HOLD function is engaged, the unit will not respond to operation of the keys. For details, refer to "Avoiding Faulty Operation (HOLD)."

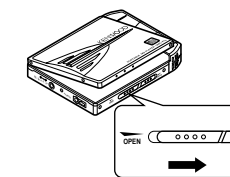
1 Connect the remote control and headphone.



+ Headphones may differ depending on the country or sales region.
+ Commercially sold headphones with stereo mini plugs (φ 3.5mm) can also be used.

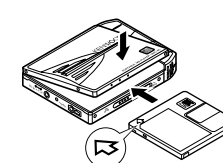
2 Inserting a recorded MD.

① Open the disc holder.



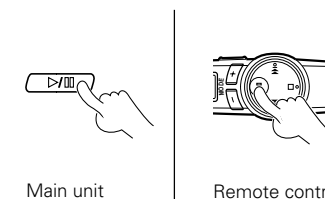
+ Do not force the disc holder open, for this will damage it.

② Insert the MD and close the disc holder by hand.



+ Press the center of the MD until the disc is locked into place.
+ When the unit has been set to "AP on" (Auto Play mode), the unit automatically turns on and starts playing the MD by closing the disc holder. For details, refer to "Setting AUTO PLAY".

3 Start playback.



+ Power comes on and playback starts from the first track.
+ "NO TITLE" will be displayed when the MD has no track titles on it.
+ After the last track is over, playback will stop.

Skip Function

Using the (Skip down) key and (Skip up) key, you can skip to the start of the track you want to listen to.

Skip Up Function

(Skip up) key: Track number increases

+ Each time the (Skip up) key is pressed during playback, the operation will skip to and playback the subsequent track.
+ Pressing and holding the (Skip up) key changes the displayed track numbers continuously. (except during Random Playback)

Skip Down Function

(Skip down) key: Track number decreases

+ When the (Skip down) key is pressed while playback is in progress, operation will skip to the start of the track currently being played back, and playback will resume from there.
+ Pressing and holding the (Skip down) key changes the displayed track numbers continuously. (except during Random Playback)

Adjust the volume

Main unit : Adjust the volume with the ▲ (volume up)/∞ (volume down) keys.
Remote control: Adjust the volume with the + (volume up) / - (volume down) keys.

+Volume level indicator (0 to 30). (The volume level is displayed on the remote control.)

To pause playback

Press during playback status.

Main unit : Press the ►/|| key.
Remote control : Press the ►/|| key.

+ Each time the key is pressed, pause and playback modes are changed over.

Stopping playback

Press during playback or pause status.

Main unit : Press the ■ key.
Remote control : Press the ■ key.

Turning the power off

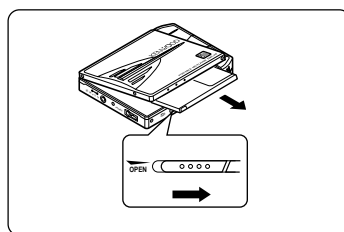
Press during stop status.

Main unit: Press the ■ key.
Remote control : Press the ■ key.

+ The power will automatically turn off if the unit is not operated for about 3 minutes after it has stopped.

When playback is started again, it will start from the start of the track that was being played back when playback was stopped. (Playback will start from the first track if the MD has been removed from the unit.) This is called the "RESUME" function.

Removing the MD



+ After the power is turned off, slide the OPEN slider in the direction of the arrow and remove the MD.

Fast forward / fast reverse (SEARCH)

Operate the key while playback is in progress. (only by remote control operation)

- 1 Press the MODE key once.
- 2 Press and hold down either the ◀◀ key or the ▶▶ key.

For forward search: keep pressing the ▶▶ key during playback.

For reverse search: keep pressing the ◀◀ key during playback.

+When you lift your finger off the key, normal playback will be resumed.

- Notes**
1. In fast forward mode, stop status is engaged when the end of the last track is reached.
 2. In reverse mode, playback starts when the start of the first track is reached.
 3. Depending on recording conditions, sound interruptions may occur during a fast forward/reverse operation.

Changing the display

(only by remote control operation)

During stop status

- 1 Press the MODE key twice.
- 2 Press the ◀◀ or ▶▶ key.

The mode changes each time the ◀◀ or ▶▶ key is pressed.

- 1 Disc name.
- 2 Total number of tracks.
- 3 Total playing time.
- 4 "KENWOOD" logo display.

During playback status

- 1 Press the MODE key twice.
- 2 Press the ◀◀ or ▶▶ key.

The mode changes each time the ◀◀ or ▶▶ key is pressed.

- 1 Title of track being played.
- 2 Number of track currently being played.
- 3 Elapsed time of track currently being played.
- 4 "◁KENWOOD▷" logo display.

Track titles or disc names are not displayed if they are not recorded on the disc.

Selecting Play Mode

Press during playback or stop status. (Random mode cannot be engaged while playback is in progress.) (only by remote control operation)

During stop status

- 1 Press the MODE key 3 times.
- 2 Press the ◀◀ or ▶▶ key.

The mode changes each time the ◀◀ or ▶▶ key is pressed.

- 1 "DOFF": Released.
- 2 "DONE": The track being played will be played repeatedly.
- 3 "DALL": All tracks of the disc will be played repeatedly.
- 4 "RANDOM": Random playback mode.

During playback status

- 1 Press the MODE key 3 times.
- 2 Press the ◀◀ or ▶▶ key.

The mode changes each time the ◀◀ or ▶▶ key is pressed.

- 1 "DOFF": Released.
- 2 "DONE": The track being played will be played repeatedly.
- 3 "DALL": All tracks of the disc will be played repeatedly.

Changing the tone (BASS BOOST)

Press during playback or stop status. (only by remote control operation)

- 1 Press the MODE key 4 times.
- 2 Press the ◀◀ or ▶▶ key.

The mode changes each time the ◀◀ or ▶▶ key is pressed.

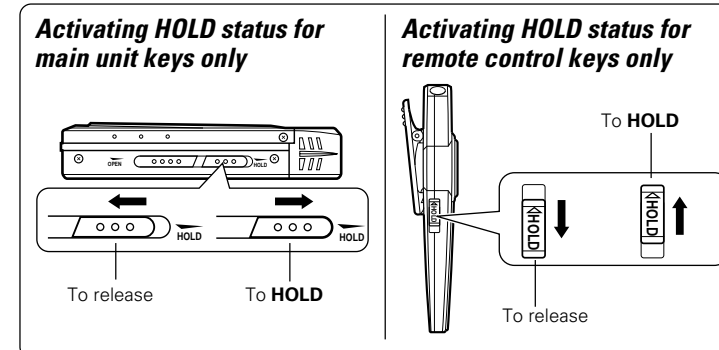
- 1 "BASS 0" : Cancel.
- 2 "BASS 1" : Bass is boosted slightly.
- 3 "BASS 2" : Bass is boosted more.

When the bass is boosted, raising the volume excessively will result in sound distortion. If this happens, either lower the bass level or the volume level.

Convenient functions

Avoiding faulty operation (HOLD)

When you are operating the unit on a train or when you are carrying it with the power off, this function allows you to prevent faulty operation due to accidental key operation. (Both the main unit and remote control should be carried with the HOLD function engaged.)



Setting AUTO PLAY

By switching the Auto Play function, power can automatically be turned on and playback from the first track started by simply inserting a MD and closing the disc holder. (only by remote control operation)

- 1 When the MODE key is held depressed for more than 2 seconds.
- 2 Press the ◀◀ or ▶▶ key.

The play mode changes each time the ◀◀ or ▶▶ key is pressed.

- 1 "AP on" : Auto Play mode.
- 2 "AP off" : Auto Play canceled.

+While "AP on" is set, inserting a MD automatically turns power on and starts playback even when the unit is set to the "HOLD" status.

Setting AUTO POWER SAVE

Press during playback or stop status. Normally, the unit is set to "PS on" mode to conserve the battery. When using the unit in a place where it is subject to vibration or impact, set "PS off" mode before operating the unit. (only by remote control operation)

- 1 When the MODE key is held depressed for more than 2 seconds.
- 2 Press the MODE key once.
- 3 Press the ◀◀ or ▶▶ key.

The play mode changes each time the ◀◀ or ▶▶ key is pressed.

- 1 "PS on" : power conservation mode.
- 2 "PS off" : skip guard mode.

Activating the operating tone (Beep)

The operating tones (beep) which are produced every time one of the keys listed below are pressed can be activated or canceled (deactivated). (only by remote control operation)

- 1 When the MODE key is held depressed for more than 2 seconds.
- 2 Press the MODE key twice.
- 3 Press the ◀◀ or ▶▶ key.

The play mode changes each time the ◀◀ or ▶▶ key is pressed.

- 1 "BP on" : A single beep is produced. (and the operating tones are activated)
- 2 "BP off" : Two beeps are produced. (and the operating tones are deactivated)

The operating tone's status - activated (BP on) or deactivated (BP off) - will be stored in memory even when the power is turned off.

For pleasant use

Cautions regarding use of rechargeable battery (Rechargeable Nickel Metal Hydride Battery NB -150)

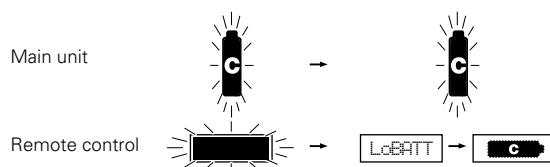
- + Do not use any battery other than the specially provided rechargeable battery. Use of another battery will damage the unit.
- + The battery is a rechargeable Nickel Metal Hydride battery. Because of the properties of this battery, it must be recharged at least once every 2 months, even if it is not used.
- + The battery can be recharged about 500 times.
- + If the battery is repeatedly recharged before its charge is completely used up, the battery service time may gradually decrease. This is due to the properties of the battery and does not indicate a malfunction. Allow the battery to be used up completely and then charge it fully. If this procedure is repeated several times, the rechargeable battery will display its proper performance.
- + Replace the rechargeable battery with a new one when its service time is short even after it has been charged. (Use the separately sold NB-150S battery.)
- + A small amount of power is used even when the unit is turned OFF. If the unit is not used for a long time, therefore, remove the battery and store it in a safe place.

During battery charging or use of the unit, the battery may become warm. This is normal and does not indicate a malfunction.

Battery indicator

For handy reference, the remaining battery life is indicated on the display while the unit is in operation.

- + When the remaining battery power drops, the battery indicator on the main unit display blinks and the LCD display on the remote control unit is reversed. If the unit continues to be used after this condition, the remote control unit LCD shows "LoBATT" and the power is turned off automatically.



For pleasant use

Simple care

When dirty

- + Wipe with a dry, soft cloth. If the unit is very dirty, moisten the cloth slightly and wipe off the dirt. Afterwards, make sure you wipe the unit dry with a dry cloth.

Taking care of plugs etc.

- + Always keep the plugs of headphones etc. clean. Dirty plugs can cause noise or failure of remote control operation.



1. Do not use chemicals like benzene, thinner, etc., as they can cause deterioration and discoloration.
2. Do not apply oil to the unit, for this will cause it to malfunction.

Handling of Mini Disc

Since the MD is in a cartridge, it can be handled without worrying about dirt or fingerprints. But soiling, warping, or other damage to the cartridge will result in faulty operation. Take the following precautions to ensure that you will always be able to enjoy the music on your MDs.

Do Not Touch the MD Directly

- + Do not open the shutter and directly touch the MD. Forcing the shutter open will damage it.

Storage Location

- + Do not store MDs in direct sunlight or in hot locations such as car interiors or in humid locations.
- + Do not leave MDs on a beach or other location where sand or dirt can enter the cartridge.

Care and Maintenance

- + Using a dry cloth, wipe dirt or dust off the cartridge at regular intervals.

Affixing the Label

- + When affixing a label on the cartridge, take the following precautions and affix it properly.
 - ① Properly affix the label in its prescribed place.
 - ② Do not affix a label over another label.
 - ③ Avoid air bubbles and turned-back corners.
- + If the label is not properly affixed, it may get stuffed into the cartridge, making it impossible to remove the disc.
- + If the label is not properly affixed, peel it off carefully and affix it properly.

Caution on condensation

Condensation (of dew) may occur inside the unit when there is a great difference in temperature between this unit and the outside. This unit may not function properly if condensation occurs. In this case, leave the unit for a few hours with the power left ON, and restart the operation after the condensation has dried up.

Be specially cautious against condensation in a following circumstance:

When this unit is carried from a place to another across a large difference in temperature, when the humidity in the room where this unit is installed increases, etc.

US and foreign patents licensed from Dolby Laboratories.

In case of difficulty

If you think the unit is not operating properly, check the symptoms before requesting service.

Troubleshooting

Symptom	Cause	Remedy
Unit fails to turn ON.	+ The disc holder is not securely closed. + The battery is depleted. + HOLD status is engaged.	+ Close disc holder securely. + Charge the battery. + Deactivate HOLD status.
There is no sound.	+ The volume is at minimum level. + The remote control or headphones are disconnected.	+ Increase the volume. + Insert plug securely.
The unit does not respond to key operation.	+ HOLD status is engaged. + The battery is depleted. + The remote control or headphone plug is not securely inserted. + The disc holder is not securely closed.	+ Deactivate HOLD status. + Charge the battery. + Insert plug securely. + Close disc holder securely.
Sound skips.	+ The disc is scratched or damaged or the recording is not good. + The unit is in a place where there is excessive vibration.	+ Replace the MD. + Move the unit to a place where there is little vibration or set to "PS off".
Battery does not charge.	+ You are using commercial rechargeable battery. + The unit has become hot because of exposure to direct sunlight etc. + You are using another AC adaptor than the accessory adaptor. + The AC adaptor has become disconnected.	+ Use the special rechargeable battery (NB-150) + Wait until the unit has cooled to normal temperature. + Use the accessory AC adaptor. + Connect the AC adaptor securely.

Meaning of display messages

Message	Meaning	Action
"noDISC"	+ There is no MD in the unit.	+ Insert a MD into the unit.
"BLANK "	+ Nothing is recorded on this MD.	+ Replace the disc with a prerecorded MD when playing it back.
"ERROR "	+ The *UTOC contents are faulty. + The disc is scratched or damaged, so playback is not possible.	+ Replace the MD.

***UTOC: A recordable MD has an area for recording so-called UTOC (User's Table of Contents) data. The UTOC contains number of tracks, playing time, written data, and other rewritable information.**

Resetting the unit

This system uses a microcomputer so it may malfunction due to external noise or interference. In such a case, unplug the power cord and remove the batteries, then plug the power cord again and insert the batteries again.

Specifications

- System** Mini disc digital audio system
- Read method** Noncontact optical reading system (semiconductor laser)
- Sampling frequency** 44.1 kHz
- Audio compression** ATRAC (Adaptive Transform Acoustic Coding)
- Number of channels** 2 channels
- Frequency response** 20 Hz to 20,000 Hz (± 3 dB)
- Wow & flutter** Less than unmeasurable limit (± 0.001 % W,PEAK)
- Input/Output terminal** .. Remote control/Phones jack
- Rated power output** 7 mW+7 mW
- Power source**
 - DC IN** jack (4-5.1V)
 - : Specially provided AC adaptor
 - : Car battery adaptor (sold separately, DC-C70)
 - DC 1.5V : Commercially sold AA alkaline battery (LR-6) × 1
 - DC 1.2V : Specially provided rechargeable battery (NB-150) × 1 (Charging time : About 3 hours)

- Battery life** (Fully charge, with "PS on" setting ON)
 - Specially provided rechargeable battery (NB-150) × 1 Approx. 9 hours
 - Commercially sold AA alkaline battery (LR-6) × 1 Approx. 10 hours
 - + At 0.5mW+0.5mW output (16 Ω load).
 - + Standard value during continuous use/charging in an temperature of 25°C.
 - + Time of use may vary depending on battery maker, battery type, use environment, and temperature.
 - + Time will be shorter when "PS off" Mode is set.

- Dimensions** (not including protruding parts)
 - W : 99.9 mm (3-15/16")
 - H : 17.5 mm (11/16")
 - D : 75 mm (2-15/16")

- Weight (Net)** 120 g (4.23 oz.) not including the accessory rechargeable battery
145 g (5.11 oz.) including the accessory rechargeable battery



1. KENWOOD follows a policy of continuous advancements in development. For reason specifications may be changed without notice.
2. The full performance may not be exhibited in an extremely cold location (under a water-freezing temperature).

For the U.S.A.

FCC WARNING:

This equipment may generate or use radio frequency energy. Changes or modifications to this equipment may cause harmful interference unless the modifications are expressly approved in the instruction manual. The user could lose the authority to operate this equipment if an unauthorized change or modification is made.

NOTE:

This equipment has been tested and found to comply with the limits for a Class B digital device, pursuant to Part 15 of the FCC Rules. These limits are designed to provide reasonable protection against harmful interference in a residential installation. This equipment may cause harmful interference to radio communications, if it is not installed and used in accordance with the instructions. However, there is no guarantee that interference will not occur in a particular installation. If this equipment does cause harmful interference to radio or television reception, which can be determined by turning the equipment off and on, the user is encouraged to try to correct the interference by one or more of the following measures:

- Reorient or relocate the receiving antenna.
- Increase the separation between the equipment and receiver.
- Connect the equipment into an outlet on a circuit different from that to which the receiver is connected.
- Consult the dealer or an experienced radio/TV technician for help.

For CANADA

Canadian IC Compliance Notice

NOTICE : This Class B digital apparatus meets all requirements of the Canadian interference-Causig Equipment Regulations.

Free Manuals Download Website

<http://myh66.com>

<http://usermanuals.us>

<http://www.somanuals.com>

<http://www.4manuals.cc>

<http://www.manual-lib.com>

<http://www.404manual.com>

<http://www.luxmanual.com>

<http://aubethermostatmanual.com>

Golf course search by state

<http://golfingnear.com>

Email search by domain

<http://emailbydomain.com>

Auto manuals search

<http://auto.somanuals.com>

TV manuals search

<http://tv.somanuals.com>