



USER MANUAL

Model : SX-18D

(Version 1.0)

Table of Content

Introduction

1. FUNCTIONAL DESCRIPTION	2
1.1 Buttons	2
1.2 LED Indication	2
1.3 LCD Display	
1.4 Connectors	2
2. PRODUCT SPECIFICATIONS	3
2.1 Technical Specification	3
2.2 Electrical Specification	3
2.3 Product Specification	3
2.4 Minimum PC system requirement	3
2.5 Accessories Bundling	4
3. USER INTERFACE DESCRIPTION	5
3.1 Buttons Description	5
3.2 LED and LCD Description	5
3.3 Connectors Description	6
3.3.1 Mini USB connector	6
3.3.2 SD/MMC/MS/SMC/XD Memory card slot	6
3.3.3 Compact Flash memory card slot	6
3.3.4 44 pins connector	7
3.3.5 Battery Compartment	7
4. DEVICE OPERATION	8
4.1 Copy (standalone) mode	8
4.2 USB mode	9
5. WINDOWS 98SE / ME INSTALLATION	10
5.1 Operating System Supported	10
5.2 Install device driver on Windows 98SE / ME	10
5.3 Verify windows98SE has properly installed the device driver	12
5.4 Troubleshoot	12
5.5 Installing new hard disk on Win98SE / ME	13
5.6 Configure new hard disk in Win98SE / ME	13
5.7 Format new hard disk in Win98SE / ME	18
6. WINDOES 200X / XP INSTALLATION	20
6.1 Operating System Supported	20
6.2 Verify windows has properly installed the device driver	20
6.3 Troubleshoot	20
6.4 Create Master Boot Record on the new hard disk.	21
6.5 Create Primary Partition Record on the new hard disk.	23

INTRODUCTION



STORXtreme is an integrated solution that provides external hard disk drive, card reader and memory card backup functions. As a portable external storage device, STORXtreme is a perfect choice for active mobile users providing a light and optimal solution for personal information storage and transfer. Any PC with a USB port is enough for user to access documents, music, images, or any other data stored in the internal hard disk drive. In addition, STORXtreme also acts as an all-in-one card reader supporting all major memory card types. More importantly, STORXtreme enhances the mobile users by enabling them to copy the content of a memory card into the internal hard disk drive without a PC or notebook. This function allows the users to easily free up more expensive memory cards for re-use in the field.

STORXtreme supports Compact Flash (CF), MicroDrives, Secure Digital Card (SD), Multimedia Card (MMC), Memory Stick (MS), Memory Stick PRO/DUO. USB connection to PC is achieved using USB 2.0 High Speed (480Mbps) link.

STORXtreme is powered by 2 x AA batteries, either Alakine or NiMH rechargeable battery, which is easily available.

Chapter 1 : FUNCTIONAL DESCRIPTION

This section describe the various parts and functions of the device. You may refer to Chapter 3 : User Interface Description for detail description.

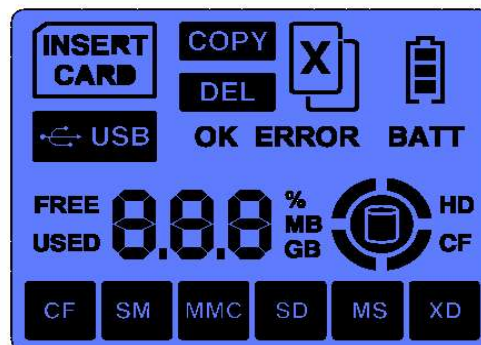
1.1 Buttons

Button	Activation	Operation
[POWER/SELECT]	Press & Hold Press & Hold Press	Power On Power Off To select the the device operations
[ENTER]	Press	To execute the selected operation
[RESET]	Press	Reset the device

1.2 LED Indication

LED #	Definition	Indication
1	[HDD]	Hard disk is accessed
2	[CARD]	Memory card is accessed

1.3 LCD Display



1.4 Connectors

No.	Definition	Purpose
CON 1	Mini USB connector	Connect to PC USB 1.0 or 2.0 port
CON 2	Memory Card connector # 1	Memory Card slot for SD / MMC / MS
CON 3	Memory Card connector # 2	Memory card slot for Compact Flash / Micro Drive
CON 4	HDD connector	For 1.8" Hard disk drive

Chapter 2 : PRODUCT SPECIFICATIONS

2.1 Technical Specification

Copy mode Data Transfer Rate	CF to HDD : 3MBps SD to HDD : 2.5MBps (2x) , 3.4MBps (ultra speed) MMC to HDD : 1 MBps MS to HDD : 0.5 MBps MS Pro to HDD : 3.5 MBps
USB Transfer Rate	This is a high speed USB device. Hard disk operates in UDMA mode
Operating OS	Windows 98SE, ME, XP, 2K, Mac X (above)
Features	File System: FAT12, FAT16 or FAT32 Long Filename: Max 256 character, Support Unicode character Auto sleep: 30seconds (copy) Card reader cum external hard disk storage
USB compliance	USB 1.0, 2.0

2.2 Electrical Specifications

Operating Condition	Temperature : 0OC ~ 70OC, Relative Humidity : 90% (max)
Power Input	2 x AA Batteries (Alakine or NiMH Rechargeable)
Operating Current	80mA (Idling) 100uA (shutdown) 800mA (depend on hard disk startup) 500mA (depend on hard disk read/write) 480mA (charge through USB) 820mA (charge through DC)

2.3 Product Dimension

Weight	100gm / 200gm (with HDD)
Size	68 x 88 x 28 mm

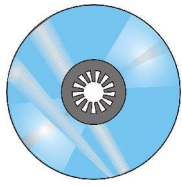
2.4 Minimum System Requirement

PC	IBM Compatible PC
CPU	Pentium III (and above)
RAM	128 MB
USB Port	USB1.0 or 2.0
HDD space	20MB available
OS	Microsoft Windows 98SE / ME / XP / 2000 Mac OS X

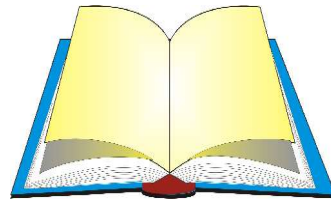
2.5 Bundled Accessories



USB cable



Installation CD



Quick Installation Guide

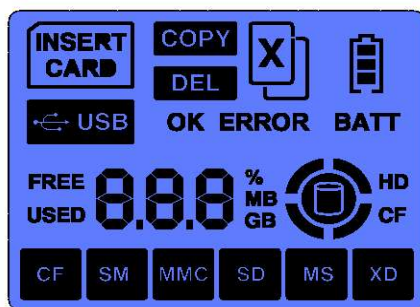
Chapter 3 : USER INTERFACE DESCRIPTION

3.1 Button Description

Button	Activation	Operation Mode	Description
[POWER/SELECT]	Press Hold	Standalone	Press and hold this button for 3 seconds to power ON/OFF the device.
[POWER/SELECT]	Press	Standalone	Press to select the operations (eg. COPY, DELETE)
[ENTER]	Press	Standalone	Press this button to execute the selected operation (eg. COPY, DELETE)
[RESET]	Press	Standalone	Press this button once to reset the device

3.2 LED and LCD Display

LED	Indication	Operation Mode	Description
1	[HDD]	USB / Standalone	(1) LED blinking indicates Hard disk is accessing
2	[CARD]	USB / Standalone	(1) LED blinking consistently indicates memory card is detected and prompt user for copy. (2) LED blink inconsistently indicates the memory card is being accessed, and copy is in progress.



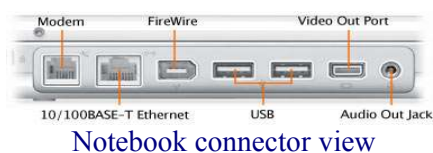
On the left is the full display of the LCD, which show various status mode :

- type of memory cards inserted,
- available HDD space, and data size of the memory cards,
- copy status in percentage,
- battery power level, etc ...

3.3 Connectors Description

3.3.1 Mini USB connector

Plug in the mini USB cable into this connector and the other end of the cable to the PC or the notebook's USB port. Use the mini USB cable that bundle with this device. The device is compliance to USB 2.0 as well as USB1.0 specification.



3.3.2 SD/MMC/MS/SMC Memory Card Slot (Slot #1)

This slot supports memory card such as Secure Digital card, Multimedia card, Memory Stick, Memory stick PRO. The device also functions as a memory card reader when connected to the PC via USB connection. It also supports other mini-sized memory cards such as Memory Stick DUO, Memory Stick PRO DUO, RS MMC, MMC mobile and mini Secure Digital card through a memory card adaptor.



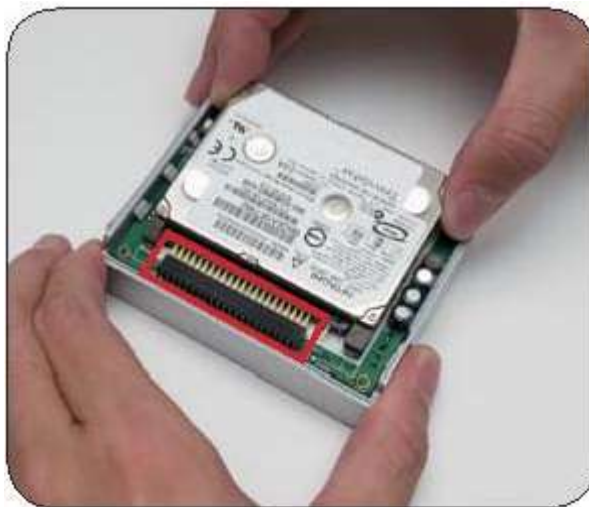
3.3.3 Compact Flash Memory Card Slot (Slot #2)

This slot supports Compact Flash Type I and II, as well as MicroDrive card.



3.3.4 44-pin Connector

Install the 1.8" Hard disk drive into this connector as shown in the picture below. Ensure that the hard disk drive is connected in the correct direction.



3.3.5 Battery Compartment

Select the type of AA battery used : Alkaline or NiMH Rechargeable Batteries. Do not mix the battery type, and remember if you are using rechargeable batteries, make sure they are fully charged before use.



* Select type of battery.



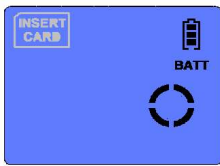
* Insert the batteries and close the cover.



Do not insert the battery in reverse polarity.

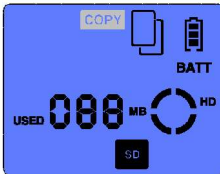
Chapter 4 : DEVICE OPERATION

4.1 Standalone Mode (Copy)



Step 1 :

Power ON the device by pressing **[POWER]** button for 3 seconds. The LCD will turn on, the **{INSERT CARD}** icon will flash prompting you to insert a Memory Card.



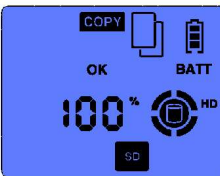
Step 2 :

Insert the memory card (eg. SD card) into the appropriate media slot, the device will detect the type of Memory Card inserted, and its data size and show them on the LCD. The **{COPY}** icon will flash prompting that the device is ready for data backup.



Step 3 :

Press the **[ENTER]** button to start copy, the LCD icons will display the operating status, indicating the percentage of data being copied.

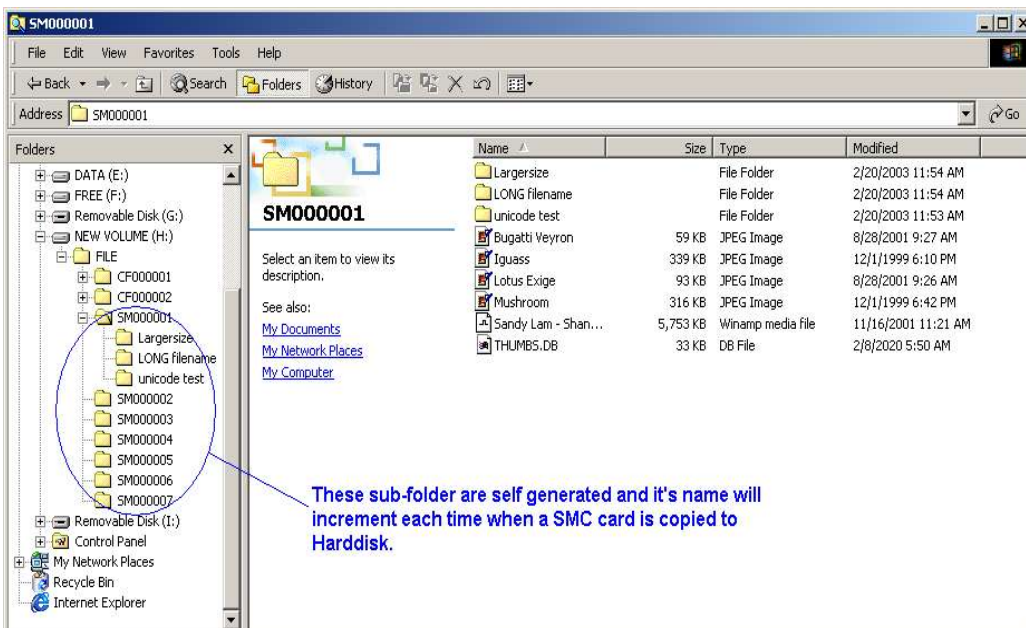


Step 4 :

When copy is completed, the LCD will display the **{OK}** and **{100%}** icons, indicating the data is copied. You may remove the memory card and turn OFF the device by pressing (for 3 seconds) the **[POWER]** button until the LCD is turned OFF .

- During copy, the content of the memory card is copied to the hard disk. The **[CARD]** and **[HDD]** LEDs will blink indicating that both Memory Card and Hard Disk Drive is being accessed and copy is in progress. A default directory **[FILE]** is created in the hard disk Root Directory and the respective sub-folder for various type of Memory Cards will be created in the format as follows :

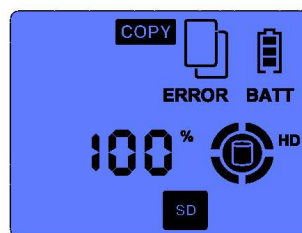
Compact Flash (CF) : starting **[CF000001]**
Secured Digital (SD) : starting **[SD000001]**
Multimedia Memory (MMC) : starting **[MC000001]**
Memory Stick (MS) : starting **[MS000001]**



If an error occurs during copy, the [ERROR] icon will appear on the LCD, you may then repeat the copy sequence. When a copy error occurs, the sub-folder created in the [FILE] directory is empty, you may ignore and delete it.

Note :

In the unlikely event that the data backup fail, the copy operation will stop, and the {ERROR} icon will show on the LCD, you may choose to repeat the operation.



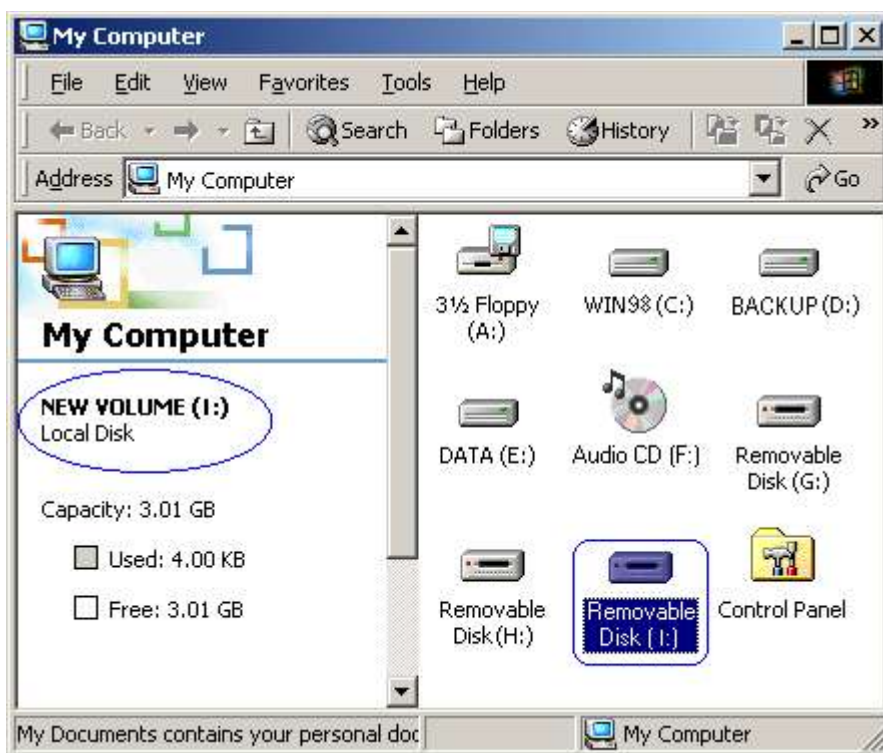
NOTE : The device Standalone Copy Mode support only FAT file system. Error will occur if your Memory Cards or HDD is NTFS formatted.

4.2 USB mode

- Connect the device to the PC via USB connection.



- The system will detect the device. Refer to the “Window Installation” section if you have not installed the Device Driver in the PC (for Windows 98se).
- 3 icons will appear on the “My Computer” screen.
- Click on the **Local disk** icon or the **Removable disk** icon on the *My Computer* screen to access the information on the storage media.



- The device will automatically shutdown once the USB cable is unplugged from the device.

Chapter 5 : WINDOWS 98SE/ME INSTALLATION

5.1 Operating System Supported

- Windows™ 98 Second Edition (SE) or Windows™ Millennium Edition (ME)
- The device driver can be found in the “Win98SE Driver” directory in the Installation CD

5.2 Install Device Driver on Windows 98 SE / ME

- Connect the device to PC via USB connection.



- Power up the device. The system will detect “*NEW HARDWARE FOUND*” and prompt user to install the device driver.

- Load the CD-ROM Installation Disk,



- Tick on “*Search for best driver for your new device*” and click *Next*..



- Select the directory path “*F:\Win98SE driver*” (where F:\ is your CD-ROM drive) and click *Next*



- Follow through the online instruction ...

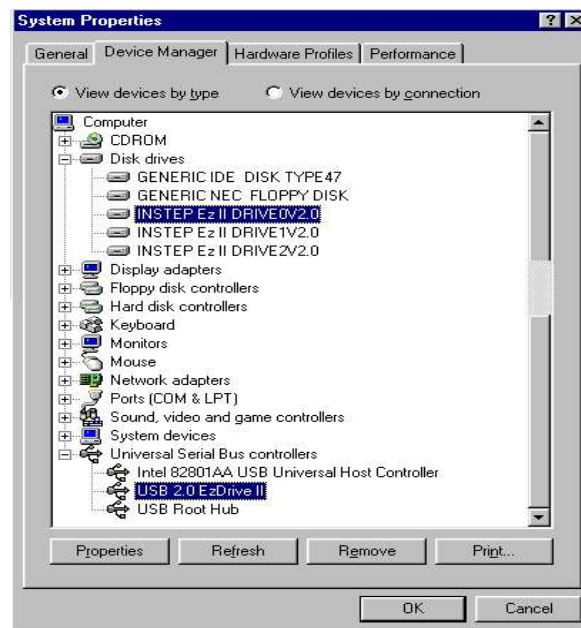




- Upon installation of the device driver, you will notice 3 icons appear on the “My Computer” screen. Refer the section on “Installing new hard disk on Win98SE / ME & configure new hard disk drive in Win98SE / ME” if user do not see your hard disk drive icon.

5.3 Verify Win98SE/ ME has properly installed the device driver

- ❑ Click on the *My Computer* icon by right-click on the mouse.
- ❑ Select the *Properties* item.
- ❑ Choose the *Device Manager* selection
- ❑ Double click the *Disk drives* item.
- ❑ And check the three *INSTEP EzII DRIVE* have installed.
- ❑ Double click the *Universal serial bus*
- ❑ *Controller* item.
- ❑ And check the *USB 2.0 EzDrive II* has installed.



5.4 Troubleshoot

- Click on *My Computer* icon by right-click on the mouse.
- Select the *Properties* item.
- Choose the *Device Manager* selection
- Double click the *others* item and check if *USB 2.0 EzDrive II* is mark with
 - an exclamation mark.
- Click on the item mark with an exclamation mark and then click *Remove*,
 - *Refresh*.
- The windows will prompt for device driver again.

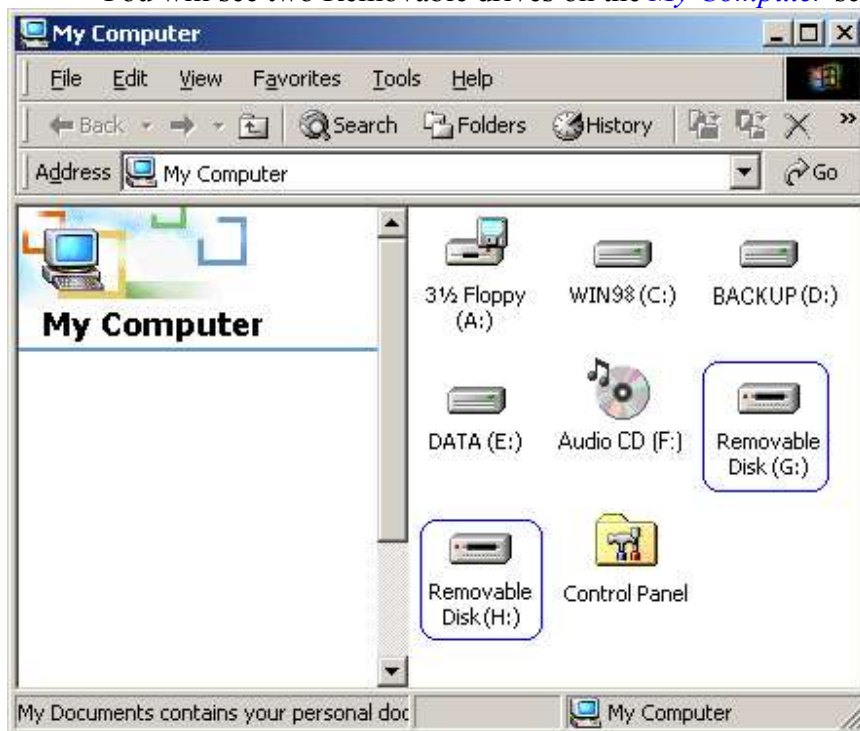


5.5 Installing New HDD on Windows 98SE / ME

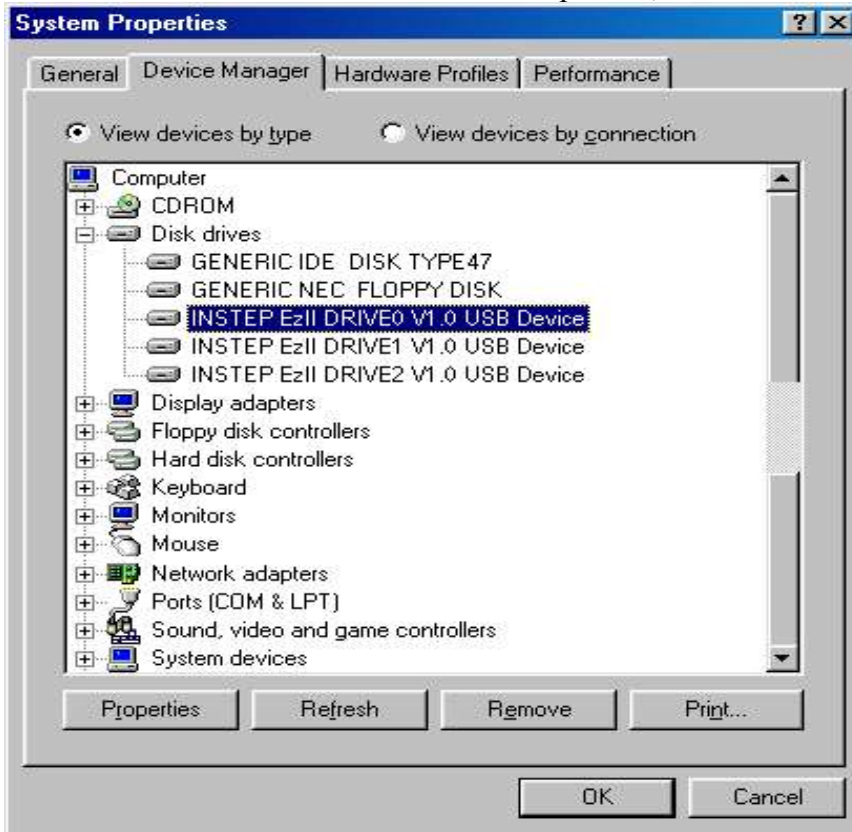
- When a new HDD is installed to this device, Windows 98SE or ME cannot recognize it as local drive because the new HDD does not contain the Master Boot Record and Primary Partition Record information.
 - User can either use Windows 2000 or XP system to create hard disk drive Master Boot Record & Primary Partition Record, or
 - User can use Window98SE /ME to configure the new hard disk drive as a Removable drive. Windows 98SE /ME will enumerate the HDD as a Removable drive instead of Local drive.
- Follow the step to configure the new HDD before format the hard disk drive. (Old data will be destroy)

5.6 Configure new hard disk in Win98SE / ME

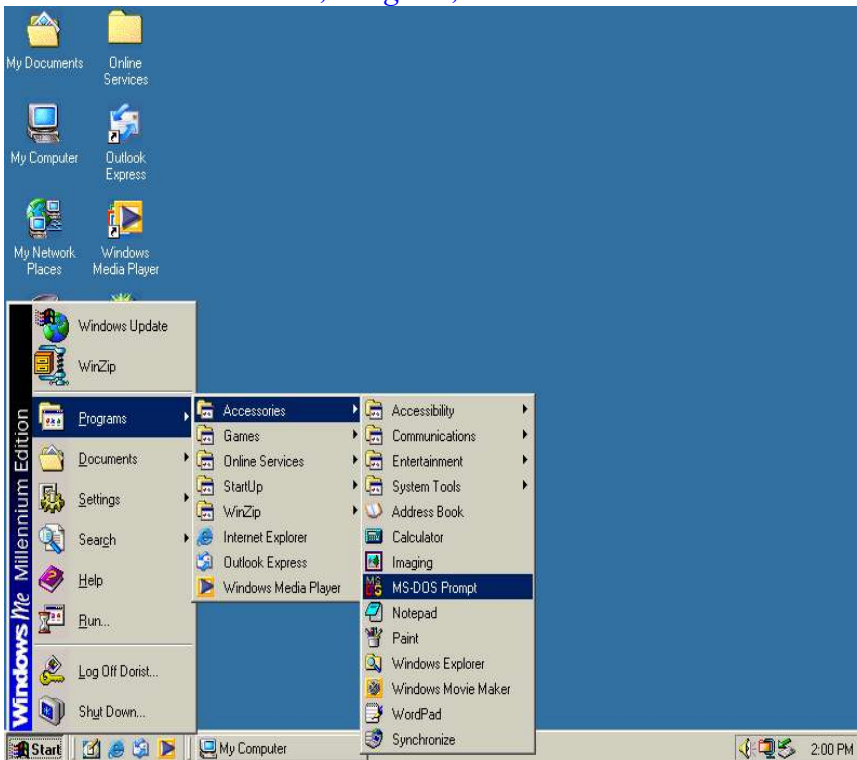
- Click on the “*My Computer*” icon by right-click on the mouse,
- Select the *Properties* item,
- Choose the *Device Manager* selection,
- Double click he *Disk drivers* item,
- Check the *INSTEP EzII DRIVE0* is present,
- You will see two Removable drives on the *My Computer* screen.



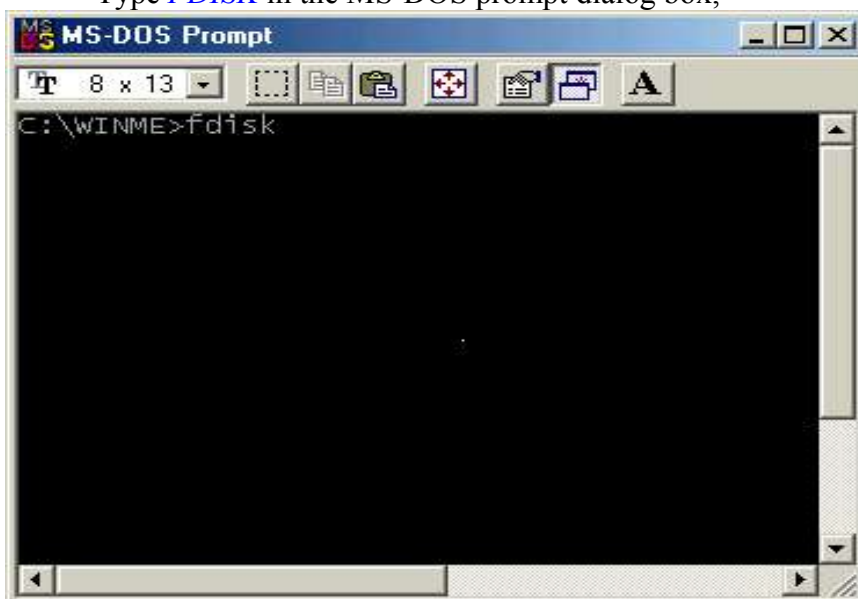
- Check that *INSTEP EzII DRIVE0* is present,



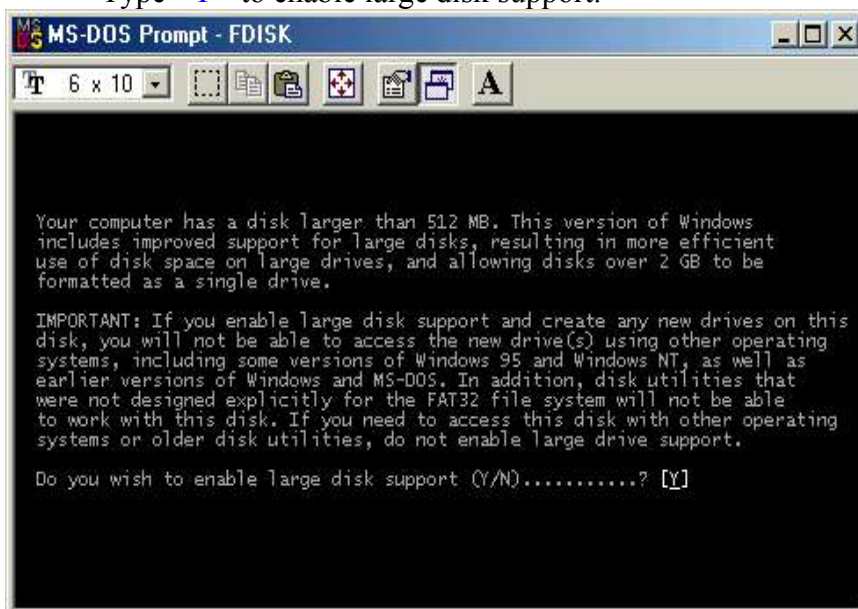
- Click on the *Start, Program, Accessories* and select *MS-DOS prompt* item,



- Type *FDISK* in the MS-DOS prompt dialog box,



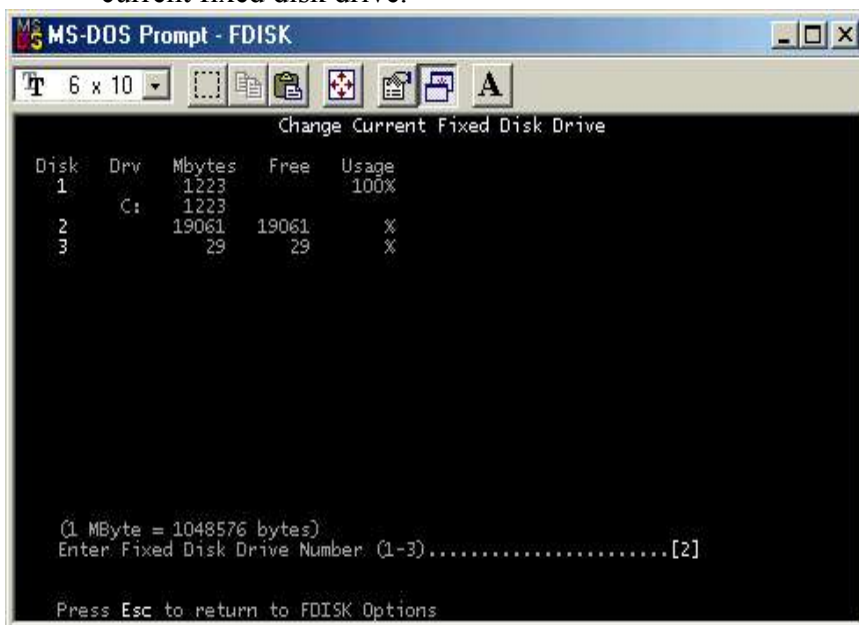
- If you cannot get to this screen, reboot the system and try again.
Type <Y> to enable large disk support.



- Enter the choice <5> to change current fixed disk drive,



- 1~3 will depend on the number of HDD present in the computer. Since 20GB HDD is used in this example, enter the choice <2> to change the current fixed disk drive.



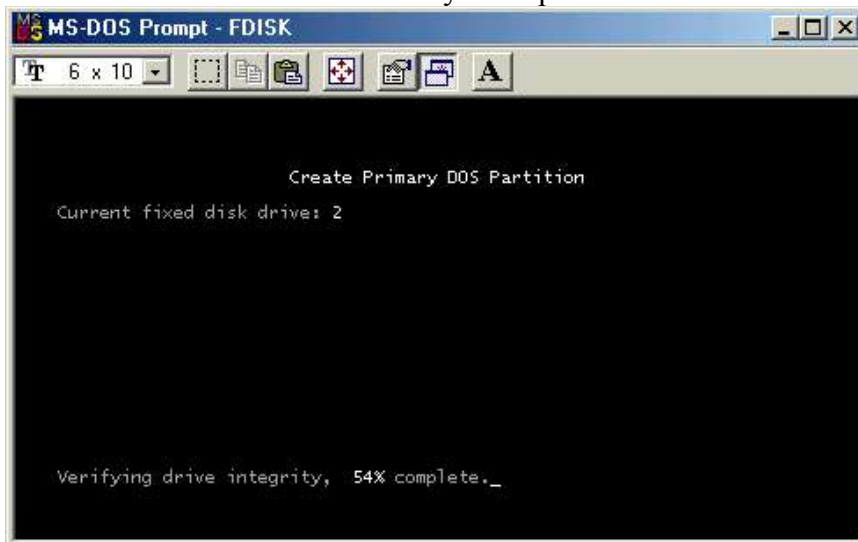
- Next, enter choice <1> to create DOS partition or logical DOS Drive,



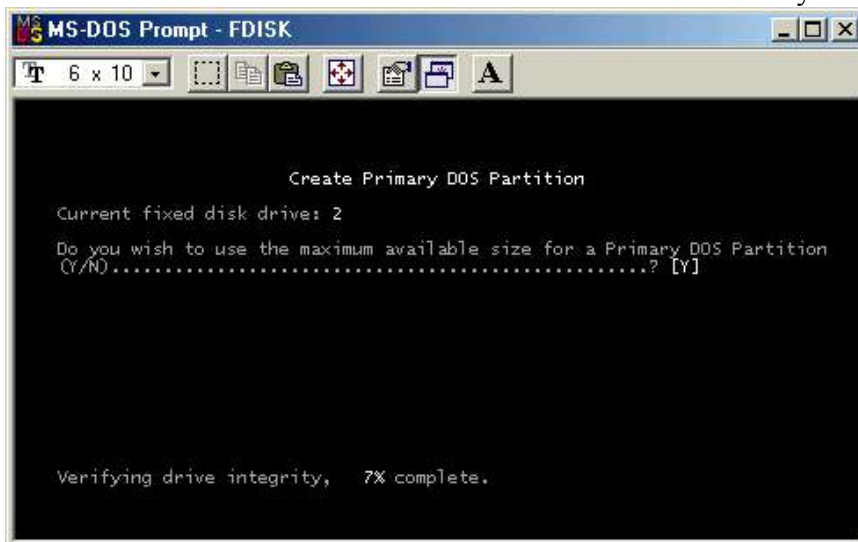
- Next, enter choice <1> to create Primary DOS partition,



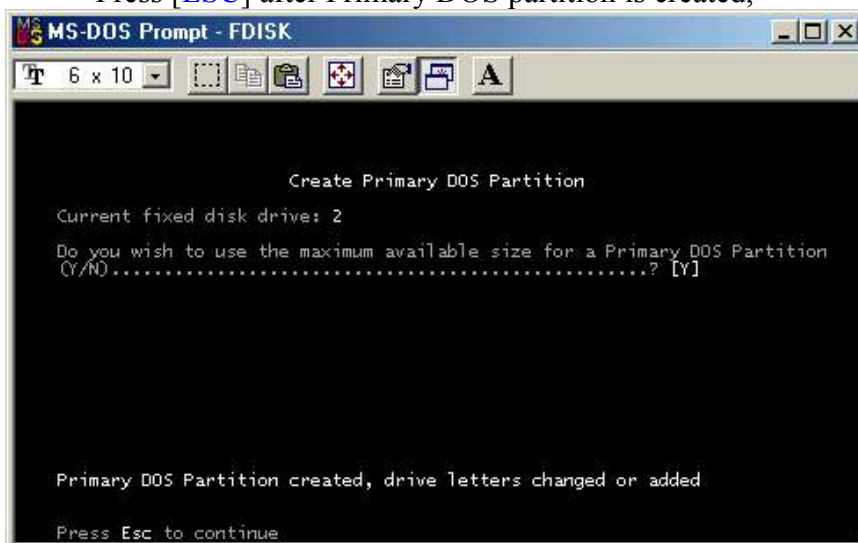
- Enter <Y> to create Primary DOS partition on current fixed disk drive 2,



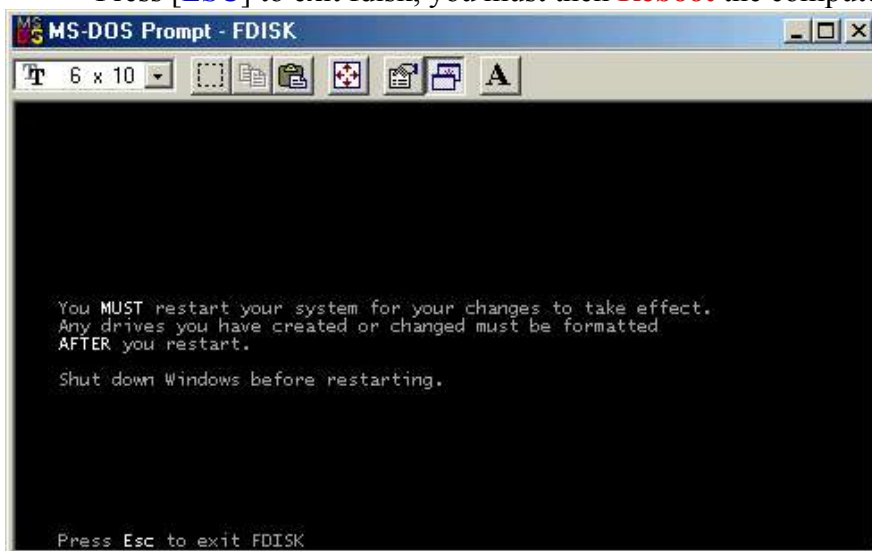
- Enter <Y> to use maximum available size for a Primary DOS partition,



- Press [ESC] after Primary DOS partition is created,



- Press [ESC] to exit fdisk, you must then **Reboot** the computer.

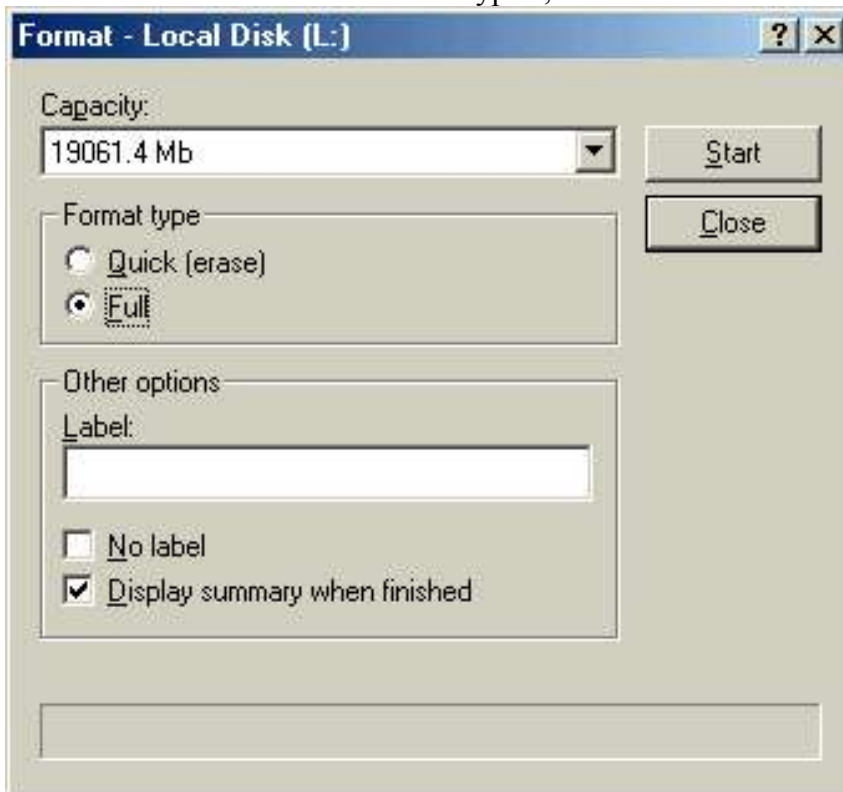


5.7 Format New HDD in Windows 98SE / ME

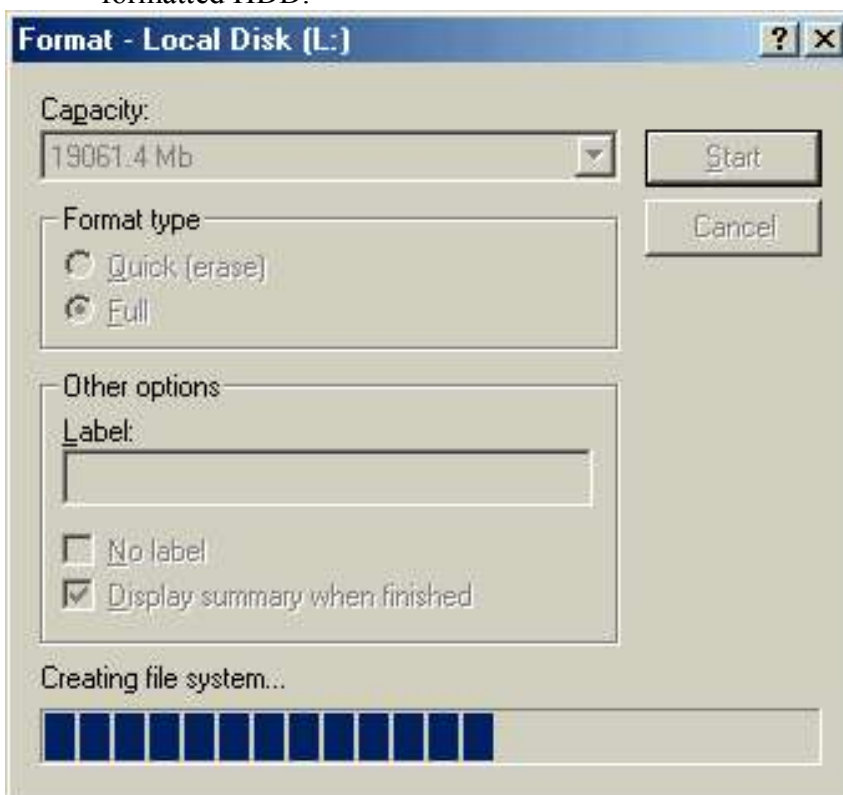
- You must reboot the computer after perform fdisk. Ensure the new HDD is enumerated and the OS will assigned a letter to the new HDD.
- Reboot the computer again once the computer has successfully detected the new HDD before formatting it,
- Click on the new *Local Disk (L:)* icon by right-button mouse,
- Select the *Format* option.



- Choose the *Full* for “Format type” ,



- You will notice the new HDD is formatting ,
- **Reboot** the computer again to let the OS initialize the new formatted HDD.



Chapter 6 : WINDOWS 200x / XP INSTALLATION

6.1 Operating System Supported

- Windows™ 2K & Windows™ XP
- Supported by Microsoft default driver. (Requires service pack from Microsoft Windows Update website)

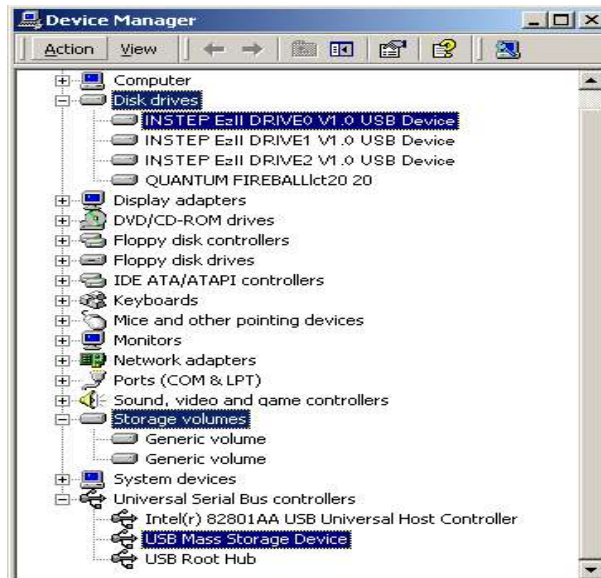
6.2 Verify windows has properly installed the device driver

- Connect the device to PC via USB connection.



- Turn ON the device. Windows will detect “*NEW HARDWARE FOUND*” and the Operating System (OS) will automatically install the Mass Storage device driver. The Window OS will initialize the Memory Card Reader as Removable drive and the hard disk as Local drive.

- ❑ Click on the *My Computer* icon by right-click on the mouse.
- ❑ Select the *Properties* item.
- ❑ Choose the *Device Manager* selection
- ❑ Double click on the *Disk Drives* item
- ❑ And check the three *INSTEP EzII DRIVE* have installed.
- ❑ Double click on the *Storage volumes* item.
- ❑ And check the *Generic volume* properly installed.
- ❑ Double click on the *Universal serial bus controller* item.
- ❑ And check the *USB Mass Storage Device* has installed.



- Upon installation, you will notice 3 icons appear on the “*My Computer*” screen. Refer to the section on “*Create Master Boot Record on the new hard disk & Create Primary Partition Record on the new hard disk*” if user do not see the hard disk drive icon.

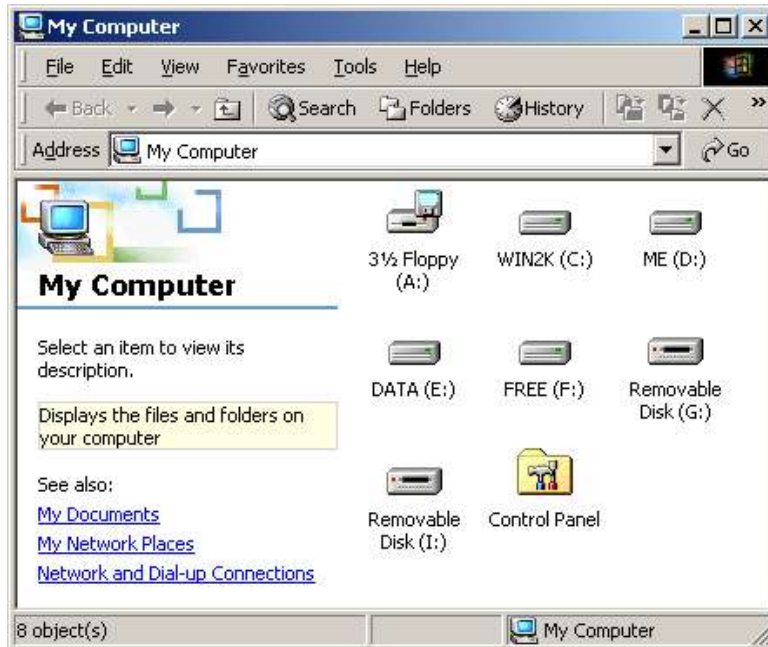
6.3 Troubleshoot

- Click on the *My Computer* icon by right-click on the mouse.
- Select the *Properties* item.
- Choose the *Device Manager* selection
- Double click the *Universal serial bus controller* and check the *USB Mass Storage Device* is mark with an exclamation mark.
- Click on the item mark with an exclamation mark and then click *Remove,Refresh*.
- The windows will prompt for device drive again.

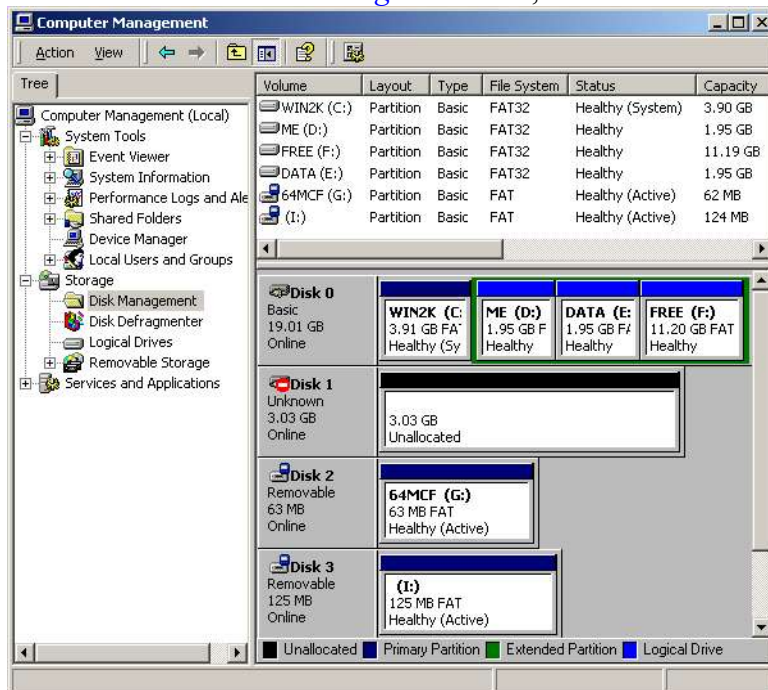


6.4 Create Master Boot Record on the new hard disk.

- Login the PC as *Administrator*,
- Click on the *My Computer* icon by right-click on the mouse and choose the *Manager* item,
- Or click on the *Control Panel* icon and follow by *Administrative tools*.



- Click the *Disk Management* icon,



- Click *Next* in the write signature prompt and Upgrade Disk wizard prompt,

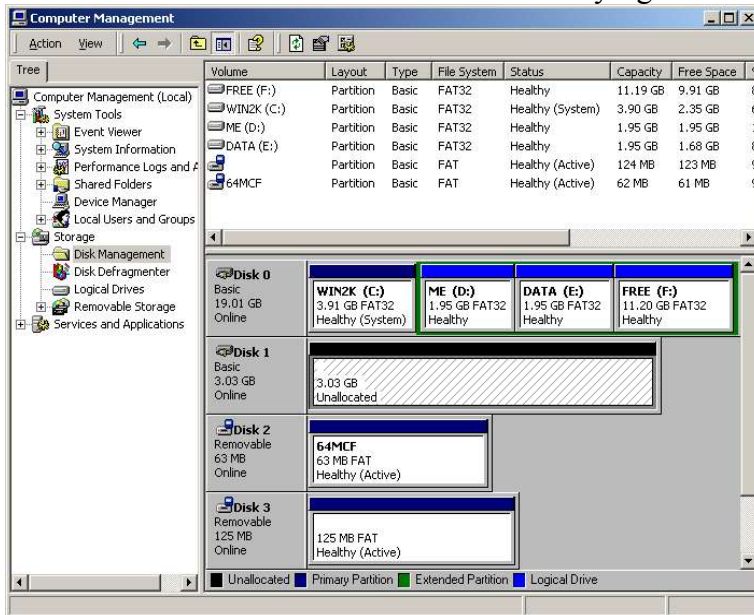


- Tick on *Disk 1* option and follow through the instruction,
- The new HDD will create a Master Boot Record on the new hard disk,
- Proceed to create a new primary partition.



6.5 Create Primary Partition Record on the new hard disk.

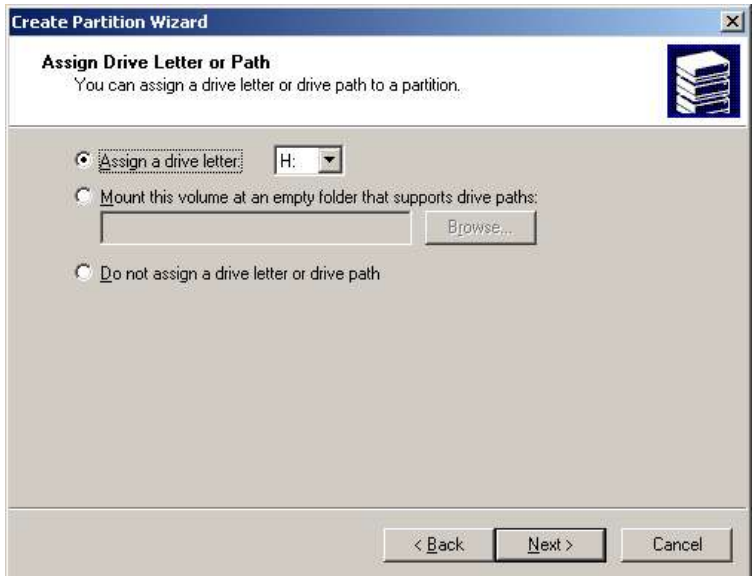
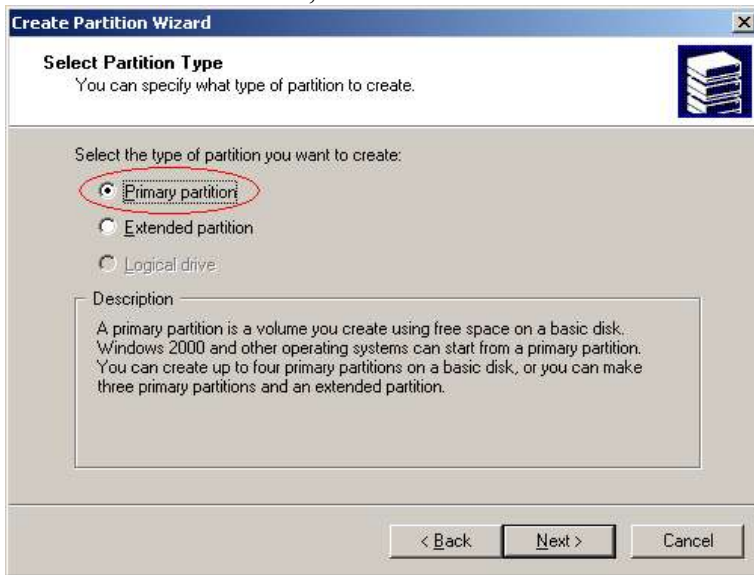
- After the HDD has created Master Boot Record (write signature), you need to create a primary partition on your new hard disk.
- Click on the *Disk 1 Unallocated* bar by right-click of the mouse.



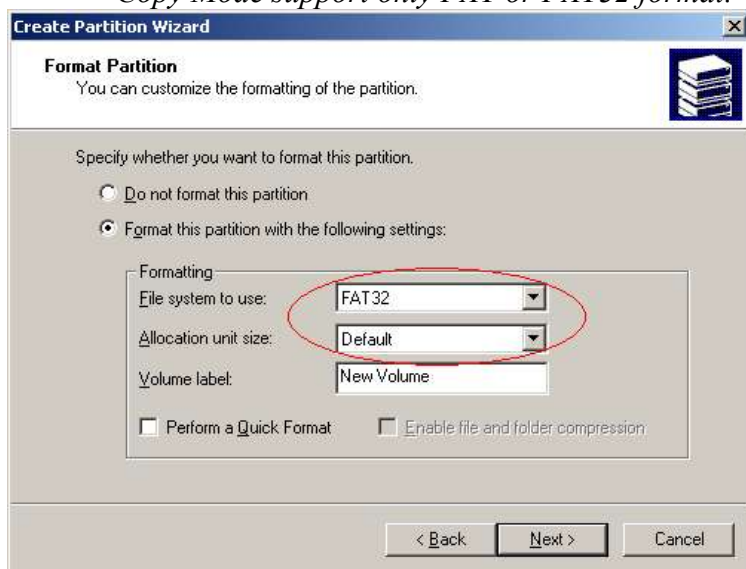
- Choose the *Create Partition* option, follow by *Next*,
Note : Windows XP and Windows 2000 cannot support More than 32GB for FAT32 file system.



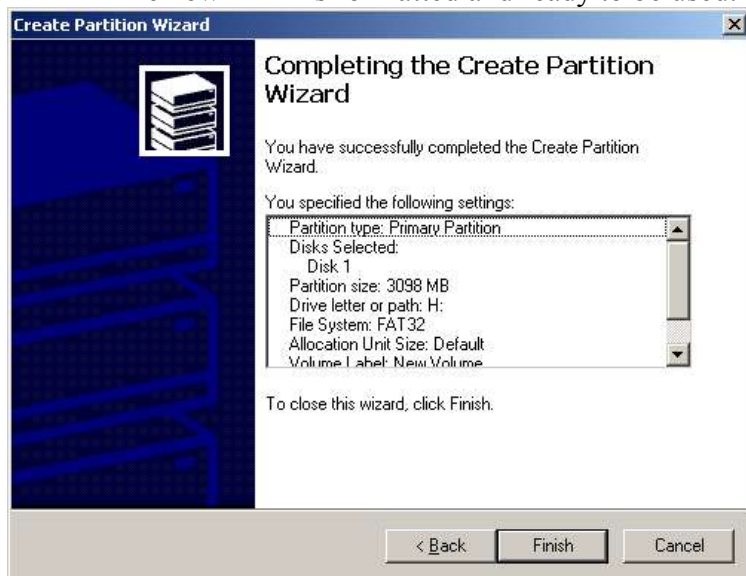
- Choose the *Primary partition* option and let system assign the drive letter ,



- Choose the **FAT32** format, Default allocation unit size and follow through the on-screen instruction.
- **Note** : Do not choose NTFS because the device Standalone Copy Mode support only FAT or FAT32 format.



- The new HDD is formatted and ready to be used.



Free Manuals Download Website

<http://myh66.com>

<http://usermanuals.us>

<http://www.somanuals.com>

<http://www.4manuals.cc>

<http://www.manual-lib.com>

<http://www.404manual.com>

<http://www.luxmanual.com>

<http://aubethermostatmanual.com>

Golf course search by state

<http://golfingnear.com>

Email search by domain

<http://emailbydomain.com>

Auto manuals search

<http://auto.somanuals.com>

TV manuals search

<http://tv.somanuals.com>