



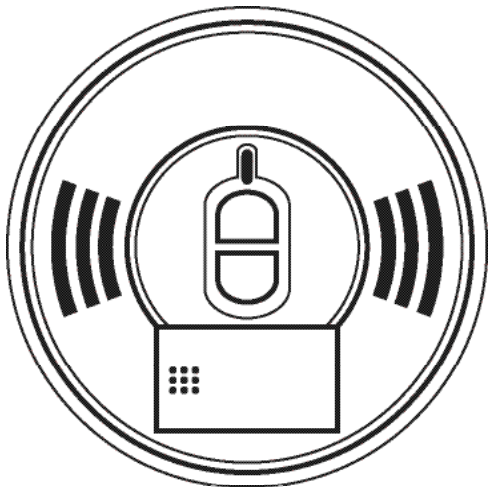
120 V AC and 9 V Battery Backup

Smoke Alarm

with Test Button and Hush[®] Control Feature

Alarm Manual

Model 1276CA



Manual P/N 820-0612 Rev. A



Contents

Introduction	1
Installation	2-11
Operation	12-16
Maintenance	17-20
Fire Safety	21-24
Warranty	25



130 Esna Park Drive, Markham ON L3R 1E3
Consumer Hotline: 1-800-880-6788
www.kidde.ca

Made in China. Patents Pending

Introduction

Model 1276CA

Thank you for purchasing this smoke alarm. It is an important part of your family's home safety plan. You can trust this product to provide the highest quality safety protection. We know you expect nothing less when the lives of your family are at stake.

Please take a few minutes to thoroughly read this alarm manual, and save it for future reference. Teach children how to respond to the alarms, and that they should never play with the unit.

If you have any questions about the operation or installation of your alarm, please call our toll free Consumer Hotline at 1-800-880-6788.

Image 1C will help you determine the correct location of safety products that will help make your home a safer place.

Installation

This unit is suitable as a Single Station and/or Multiple Station alarm (interconnects with up to 24 devices), and has a five-year limited warranty.

IMPORTANT: This unit is only approved to interconnect with the Kidde line of products. It is not approved to interconnect with any other manufacturer's products.

This alarm is interconnect compatible with the following alarms and accessories:

Smoke alarms:

1235CA, 1275CA, 1276CA, 1285CA, PE120CA, PI2000CA

Smoke/CO alarms: KN-COSM-IBCA, KN-COSM-ICA

CO alarms: KN-COB-ICB-CA, KN-COB-IC-CA

Relay modules: 120X, SM120X, CO120X

Heat alarm: HD135FCA

Strobe Light: SL177I

Refer to respective manuals for specific application information.

This product is designed to detect products of combustion using the ionization technique. It contains 0.9 microcurie of Americium 241, a radioactive material. Distributed under U.S. NRC License No. 32-23858-01E. Manufactured in compliance with U.S. NRC safety criteria in 10 CFR 32.27. The purchaser is exempt from any regulatory requirements.

This smoke alarm uses an extremely small amount of radioactive element in the ionization sensor chamber. Do not try to repair the smoke alarm yourself. Refer to the instructions in **Warranty** for service.

WARNING! Removal of the smoke alarm battery and disconnecting or loss of AC power will render the smoke alarm inoperative.

ELECTRICAL RATING: 120 V AC, 60 HZ, 80 mA maximum per alarm (maximum 80 mA for originating unit with 24 devices interconnected).

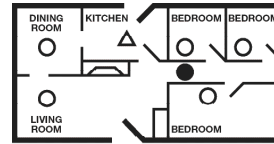
IMPORTANT! Read all instructions before installation and keep this manual near the alarm for future reference.

Installation

Recommended Locations

- Locate the first alarm in the immediate area of the bedrooms. Try to protect the exit path, as the bedrooms are usually farthest from the exit. If more than one sleeping area exists, locate additional alarms in each sleeping area (Image 1A).
- Locate additional alarms to protect any stairway as stairways act like chimneys for smoke and heat.
- Locate at least one alarm on every floor level (Image 1B).
- Locate an alarm in every bedroom.
- Locate an alarm in every room where electrical appliances are operated (i.e. portable heaters or humidifiers).
- Locate an alarm in every room where someone sleeps with the door closed. The closed door may prevent the alarm from waking the sleeper.
- Smoke, heat, and combustion products rise to the ceiling and spread horizontally. Mounting the smoke alarm on the ceiling in the center of the room places it closest to all points in the room. Ceiling mounting is preferred in ordinary residential construction.
- When mounting an alarm on the ceiling, locate it at a minimum of 10 cm (4") from the side wall (Image 2A).
- When mounting the alarm on the wall, use an inside wall with the top edge of the alarm at a minimum of 10 cm (4") and a maximum of 30.5 cm (12") below the ceiling (Image 2A).
- Put smoke alarms at both ends of a bedroom hallway or large room if the hallway or room is more than 9.1 m (30') long.
- For mobile home installation, select locations carefully to avoid thermal barriers that may form at the ceiling. For more details, see *Mobile Homes*.

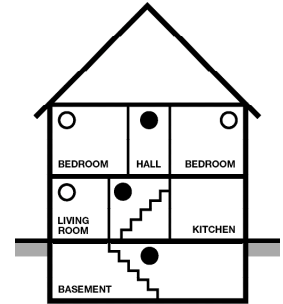
Installation



- Smoke Alarms for Minimum Protection
- Smoke Alarms for Additional Protection
- △ Ionization Type Smoke Alarm with Hush® Control or Photoelectric Type

SINGLE FLOOR PLAN

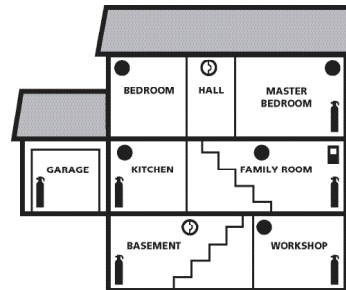
IMAGE 1A



MULTIPLE FLOOR PLAN

IMAGE 1B

- Install smoke alarms on sloped, peaked or cathedral ceilings at or within 0.9 m (3') of the highest point (measured horizontally). NFPA Standard 72 states: "Smoke alarms in rooms with ceiling slopes greater than 0.3 m in 2.4 m (1 foot in 8 feet) horizontally shall be located on the high side of the room." NFPA Standard 72 states: "A row of detectors shall be spaced and located within 0.9 m (3') of the peak of the ceiling measured horizontally" (Image 2B).



- 🧯 FIRE EXTINGUISHERS
- SMOKE ALARMS
- 🏠 CARBON MONOXIDE ALARM
- 🕒 SMOKE/CO ALARMS

IMAGE 1C

TOTAL HOME PROTECTION

Installation

Locations to Avoid

- Do not install within 0.9 m (3') of the following: The door to a kitchen, or a bathroom that contains a tub or shower, forced air ducts used for heating or cooling, ceiling or whole house ventilating fans, or other high air-flow areas.
- Do not place the alarm where drapes or other objects will block the sensor. Smoke must be able to reach the sensor to accurately detect conditions.
- Do not install in peaks of vaulted ceilings, "A" frame ceilings or gabled roofs. (Less than 10 cm (4") from the peak of an "A" frame type ceiling.)
- Install at least 30.5 cm (12") away from fluorescent lights as electronic noise may cause nuisance alarms.
- Keep out of insect infested areas. Avoid excessively dusty, dirty or greasy areas. Dust particles may cause nuisance alarms or failure to alarm.
- Extreme temperatures may effect the sensitivity of the alarm. Do not install in areas where the temperature is colder than 4.4°C (40°F) or hotter than 37.8°C (100°F).
- Do not install in areas where the relative humidity (RH) is greater than 85%. Very humid areas, with moisture or steam, can cause nuisance alarms.
- Avoid placing ionization smoke alarms in kitchen areas. Normal cooking may cause nuisance alarms. If a kitchen alarm is desired, it should have an alarm silence feature or be a photoelectric type.
- Do not place in the garage. Particles of combustion are present when you start your automobile.

Installation

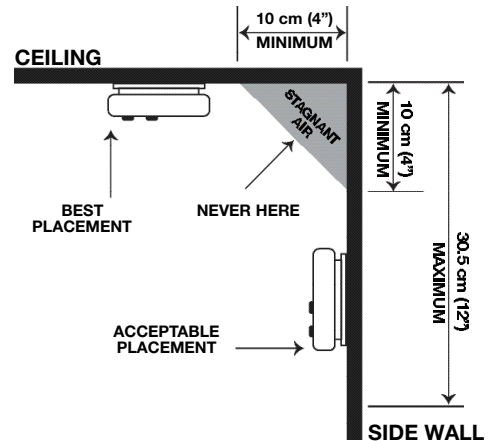


IMAGE 2A

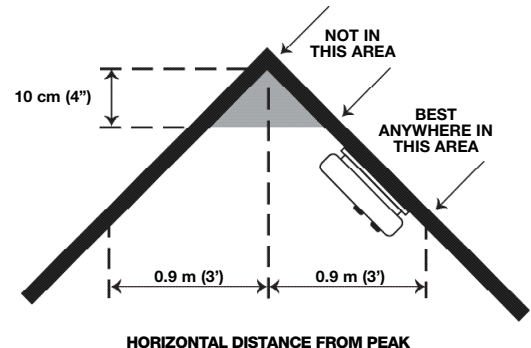


IMAGE 2B

Installation

Mobile Homes

Mobile homes built in the past five to seven years have been designed to be energy efficient. Install smoke alarms as recommended in **Recommended Locations** and Image 2A.

In mobile homes that are not well insulated compared to present standards, extreme heat or cold can be transferred from the outside to the inside through poorly insulated walls and roof. This may create a thermal barrier that can prevent the smoke from reaching an alarm mounted on the ceiling. In such units, install the smoke alarm on an inside wall with the top edge of the alarm at a minimum of 10 cm (4") and a maximum of 30.5 cm (12") below the ceiling (Image 2A).

If you are not sure about the insulation in your mobile home, or if you notice that the outer walls and ceiling are either hot or cold, install the alarm on an inside wall. For minimum protection, install at least one alarm close to the bedrooms. For additional protection, see Image 1A.

WARNING: Test your smoke alarm operation after R.V. or mobile home vehicle has been in storage, before each trip and at least once a week during use.

Wiring

- This smoke alarm should be installed on a UL listed or recognized junction box. All connections should be made by a qualified electrician and must conform to article 760 of the U.S. National Electrical Code, NFPA 72 and/or any other codes having jurisdiction in your area.
- The appropriate power source is 120 Volt AC Single Phase supplied from a non-switchable circuit which is not protected by a ground fault interrupter.
- The alarm should not be operated on power derived from a square wave or modified square wave inverter. These power sources produce high peak voltages that will damage the alarm.

Installation

CAUTION! Turn off the main power to the circuit before wiring the alarm.

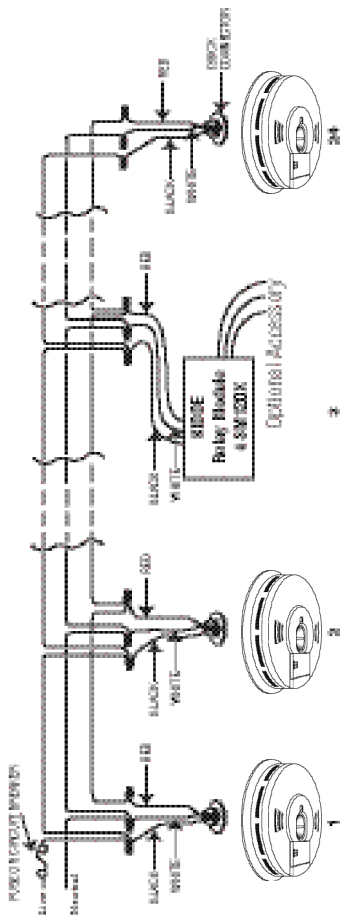
- For alarms that are used as single station, DO NOT CONNECT THE RED WIRE TO ANYTHING. Leave the red wire insulating cap in place to make certain that the red wire cannot contact any metal parts or the electrical box.
- When alarms are interconnected, all interconnected units must be powered from a single circuit.
- A maximum of 24 Kidde devices may be interconnected in a multiple station arrangement. The interconnect system should not exceed the NFPA interconnect limit of 12 smoke alarms and/or 18 alarms total (smoke, heat, carbon monoxide, etc.) With 18 alarms interconnected, it is still possible to interconnect up to a total of 6 remote signaling devices and/or relay modules.

CAUTION! Kidde alarms and accessories CAN ONLY BE interconnected with other Kidde alarms and accessories. Connection of these devices to another manufacturer's interconnect system, or connection with equipment from another manufacturer into an existing Kidde system could result in nuisance alarming, failure to alarm, or damage to one or all of the devices in the interconnect system.

- When mixing models which have battery backup with models without battery backup, be advised that the models without battery backup will not respond during an AC power failure.
- For more information about compatible interconnect units and their functionality in an interconnect system, visit our web site at: www.kidde.ca
- The maximum wire run distance between the first and last unit in an interconnected system is 305 m (1000').
- Image 3 illustrates interconnection wiring. Improper connection will result in damage to the alarm, failure to operate, or a shock hazard.
- Make certain alarms are wired to a continuous (non-switched) power line. NOTE: Use standard CSA listed household wire (18 gauge or larger as required by local codes) available at all electrical supply stores and most hardware stores.

Installation

IMAGE 3 INTERCONNECT WIRING



WIRES ON ALARM HARNESS

Black Connected to hot side of AC line.

White Connected to neutral side of AC line.

Red Connected to interconnect lines (red wires) of other units in a multiple station set-up.

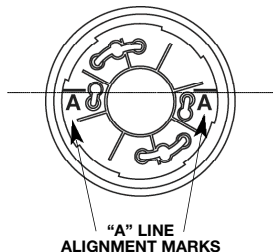
Installation

Mounting

CAUTION: This unit is sealed. The cover is not removable!

CAUTION: When wall mounting, the unit must be mounted so that battery door faces down! (Image 4C)

- After selecting the proper smoke alarm location as described previously, and wiring the AC Quick-Connect wire harness as described in **Wiring**, attach the mounting plate to the electrical box (Image 4B). To ensure aesthetic alignment of the alarm with the hallway, or wall, the "A" line on the mounting plate must be *parallel* with the hallway when ceiling mounted, or *horizontal* when wall mounted (Image 4A).



"A" LINE
ALIGNMENT MARKS

IMAGE 4A

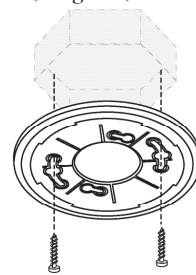
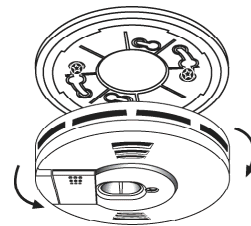


IMAGE 4B



WALL MOUNTING
POSITION

IMAGE 4C



ROTATE TO MOUNT OR
TO REMOVE

IMAGE 4D

Installation

- Pull the AC Quick-Connect wire harness through the center hole in the mounting bracket and secure the bracket, making sure that the mounting screws are positioned in the small ends of the keyholes before tightening (Image 4B).
- Plug the AC Quick-Connect wire harness into the back of the alarm (Image 5), making sure that the locks on the connector snap into place. Push the excess wire back into the electrical box through the hole in the center of the mounting plate.



IMAGE 5 ATTACHING THE AC QUICK-CONNECT WIRE HARNESS

- Install the alarm on the mounting plate and rotate the alarm in the direction of the “ON” arrow on the cover until the alarm ratchets into place (Image 4D). This ratcheting function allows for aesthetic alignment.
Note: The alarm will attach to the mounting plate in 4 positions (every 90 degrees). **When wall mounting, make sure the battery door is at the bottom of the unit (Image 4C).**

Battery

This unit will not function without a properly installed battery, and is equipped with a battery lockout feature which prevents the battery door from closing if a battery is not installed correctly. See **Maintenance** section for additional information concerning battery installation.

- For initial installation a pre-installed 9 V battery is included with a battery pull tab that allows for easy connection. Simply pull the tab out, and the battery backup is connected! See **Maintenance** for additional information concerning battery installation.
- Pull the Battery Pull Tab (yellow tab protruding from the unit) completely out of the unit. This will automatically connect the battery.

Operation

Testing

- Test the unit to ensure proper operation by pressing the Test button. (All interconnected, battery backed-up alarms, should respond).

CAUTION: Due to the loudness (85 decibels) of the alarm, always stand an arms-length away from the unit when testing.

- Turn on the AC power. The green Power On Indicator should be lit when the alarm is operating from AC power.
- Confirm unit operation by pressing the Test button again.

The smoke alarm is operating once AC power is applied, a fresh battery is installed and testing is complete. When the smoke alarm ionization sensor chamber senses products of combustion, the horn will sound a loud (85db) alarm until the sensing chamber is cleared of smoke particles.

CONTRACTOR'S NOTE: Only remove the battery pull-tab once AC is permanently applied. Unit will chirp if AC is applied and the pull-tab is still present.

Operation

Alarm Tamper Resist Feature

To make the smoke alarm somewhat tamper resistant, a tamper resist feature has been provided. Activate the alarm tamper resist feature by breaking off the four posts in the square holes in the mounting plate (Image 6A). Rotate the alarm onto the mounting plate until you hear the tamper resist tab snap into place, locking the alarm.

Using the tamper resist feature will deter children and others from removing the alarm. To remove the alarm, press on the tamper resist tab, and rotate the alarm off of the mounting plate (Image 6B).

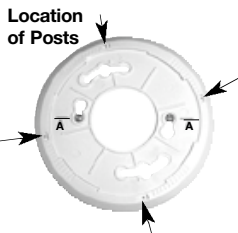


IMAGE 6A

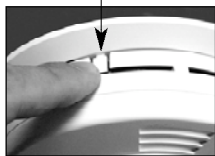


IMAGE 6B

Operation

Battery Tamper Resist Feature

This alarm has a battery tamper resist feature, which prevents the battery door from being opened. This feature is effective in preventing the removal of the battery from this device (which will render the unit inoperable during the loss of AC power).

To activate the battery tamper resist feature, remove the unit from the mounting plate, disconnect the AC Quick-Connector and locate the small cut-out in the middle of the product label on the back of the unit. With a small screwdriver, or similar tool, slide the switch towards the direction indicated by the arrows (Image 7). The tamper resist feature is now active and the battery door can not be opened until the tamper resist feature is deactivated.



IMAGE 7 BATTERY TAMPER RESIST SWITCH

NOTE: Before activating the battery tamper resist feature, make sure a fresh battery is installed in the unit and that the battery door is properly closed. If the battery tamper resist feature is activated while the battery door is open, the battery door will not close and the unit will be inoperable during the loss of power.

To deactivate the battery tamper resist, in order to change the battery, remove the unit from the mounting plate (see **Alarm Tamper Resist Feature** if activated), disconnect the AC Quick-Connector and locate the small cut-out in the middle of the product label. Using a screwdriver or similar tool, slide the switch in the **OPPOSITE DIRECTION OF THE ARROWS**. The battery door can now be opened.

Operation

Hush® Control Feature

Smoke alarms are designed to minimize nuisance alarms. Cigarette smoke will not normally set off the alarm, unless the smoke is blown directly into the alarm. Combustion particles from cooking may set off the alarm if the alarm is located close to the cooking area. Large quantities of combustible particles are generated from spills or when broiling. Using the fan on a range hood that vents to the outside (non-recirculating type) will also help remove these combustible particles from the kitchen. The Hush® button is extremely useful in a kitchen area or other areas prone to nuisance alarms.

The Hush® feature has the capability of temporarily desensitizing the smoke alarm circuit for about 7 minutes. This feature is to be used only when a known alarm condition, such as smoke from cooking, activates the alarm.

If the alarm does sound, check for fires first. If a fire is discovered, get out and call the fire department. If no fire is present, check to see if one of the reasons listed in **Locations to Avoid** may have caused the alarm.

The smoke alarm is desensitized by pushing the Hush® button on the smoke alarm cover. If the smoke is not too dense, the alarm will silence immediately and “chirp” every 30-40 seconds for approximately 7 minutes. This indicates that the alarm is in a temporarily desensitized condition. The smoke alarm will automatically reset after approximately 7 minutes. If after this period particles of combustion are still present, the alarm will sound again.

The Hush® feature can be used repeatedly until the air has been cleared of the condition causing the alarm. Pushing the Test button on the alarm will end the Hush® period.

NOTE: Dense smoke will override the Hush® control feature and sound a continuous alarm.

CAUTION: Before using the alarm Hush® feature, identify the source of the smoke and be certain a safe condition exists.

Operation

LED Indicators

This alarm is equipped with red and green LED indicators, each with two modes of operation.

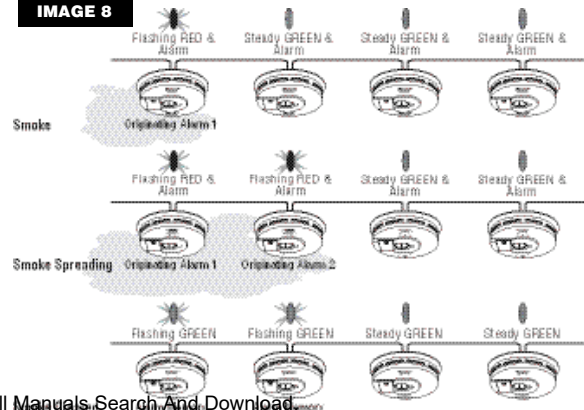
Red LED - Flashing every 30-40 seconds: Indicates that the smoke alarm is operating properly.

Red LED - Flashing Rapidly: When the smoke alarm senses particles of combustion and goes into alarm (constant pulsating sound), the red LED will flash rapidly (one flash per second). The rapid flashing LED and pulsating alarm will continue until the air is cleared. When interconnected, only the red LED's of the alarms that are sensing smoke or are being tested will flash rapidly (originating alarms). All other units in the interconnect system will sound an alarm, but their red LED's will NOT flash rapidly.

Green LED - Constantly On: Indicates that the unit is receiving 120 V AC power.

Green LED - Flashing: This unit features an “alarm memory” to indicate itself as an originating alarm (that sounded and triggered others in an interconnect system). Once the unit returns to silence after the occurrence of an alarm, a flashing green LED marks the unit as an originating alarm (Image 8). The flashing green LED remains until it is reset by pushing the Test button.

IMAGE 8



Maintenance

Testing

CAUTION: Due to the loudness (85 decibels) of the alarm, always stand an arms length away from the unit when testing.

Test by pushing the Test button on the cover and hold it down for a minimum of 2 seconds. This will sound the alarm if all the electronic circuitry, horn and battery are working. If no alarm sounds, check the fuse or circuit breaker supplying power to the alarm circuit. If the alarm still does not sound, the unit has a defective battery or some other failure. **DO NOT** use an open flame to test your alarm, you could damage the alarm or ignite combustible materials and start a fire.

Test the alarm weekly to ensure proper operation. Erratic or low sound coming from your alarm may indicate a defective alarm, and it should be returned for service (see page 25).

Alarm Removal

If the smoke alarm tamper resist feature has been activated, refer to the **Alarm Tamper Resist Feature** section for removal instructions.

To remove the alarm from the mounting plate, rotate the alarm in the direction of the "OFF" arrow on the cover. To disconnect the AC Quick-Connect wire harness, squeeze the locking arms on the sides of the Quick Connector while pulling the connector away from the bottom of the alarm (see Image 5).

Maintenance

Battery Removal

NOTE: If battery tamper resist feature has been activated it will need to be deactivated in order to change the battery. Refer to the **Battery Tamper Resist Feature** section for instructions.

To replace or install the battery press down on the battery door and then release to allow the door to pop open. The battery can then be pulled out (Image 9). When installing a new battery, make sure the battery terminals are facing outwards as illustrated inside the battery door and that the polarity matches the markings printed. Completely press the battery door down into the alarm and release. The battery door will secure into the closed position.

A missing or improperly installed battery will prevent the battery door from closing and result in improper alarm operation.

This alarm has a low/missing battery monitor circuit which will cause the alarm to "chirp" approximately every 30-40 seconds for a minimum of seven (7) days when the battery gets low. Replace the battery when this condition occurs.

NOTE: Low/missing battery monitor circuit WILL cause the unit to chirp while replacing the battery. This function will cease once the new battery has been installed. To avoid this "chirp" the unit can be removed from the mounting plate and disconnected from the AC power when replacing the battery, but it is not necessary. This smoke alarm has a convenient front-load battery feature that does not require disconnection for changing the battery.



IMAGE 9

BATTERY DOOR OPERATION

Maintenance

This smoke alarm uses a 9 V carbon zinc battery (alkaline and lithium batteries may also be used). A fresh battery should last for one year under normal operating conditions.

Use only the following 9 volt batteries for replacement:

Carbon-Zinc Type	Eveready 216 or 1222 Gold Peak 1604P or 1604S
Alkaline Type	Energizer 522 Duracell MN1604 or MX1604 Gold Peak 1604A
Lithium Type	Ultralife U9VLJ

These batteries can be purchased at your local retailer.

WARNING! Use only the batteries specified above. Use of different batteries than the recommended ones, may have a detrimental effect on the smoke alarm. A good safety measure is to replace the battery at least once a year, or at the same time you change your clocks for daylight saving time. Be sure to follow the battery installation instructions printed on the back of the alarm.

NOTE: REGULAR WEEKLY TESTING IS REQUIRED!

NOTE: If after battery replacement the alarm continues to chirp, push the Test button. The Hush[®] feature may have been activated accidentally while changing the battery and pushing the Test button will end the Hush[®] cycle.

Maintenance

Cleaning the Alarm

The alarm should be cleaned at least once a year.

- To clean your alarm, remove it from the mounting plate as outlined in previous sections. You can clean the alarm by using compressed air or a vacuum cleaner hose with a soft brush attachment. Blow or vacuum around the perimeter of the alarm to remove dust and dirt. The outside of the alarm can be wiped with a damp cloth (do not use a wet cloth to avoid water entering the unit).
- After cleaning, reinstall your alarm, verify that the green LED is on and test your alarm by using the Test button. If cleaning does not restore the alarm to normal operation, the alarm should be replaced.
- Do not paint the unit. Paint will seal the vents and interfere with the sensor's ability to detect smoke. Never attempt to disassemble the unit or clean inside. This action will void your warranty.

Replacing the Alarm

The National Fire Protection Association (NFPA) and Kidde recommend replacing this alarm **ten years** from the date code label (located on the back of the alarm).

Fire Safety

WARNING: Please read carefully and thoroughly.

- NFPA Standard 72 states: Life safety from fire in residential occupancies is based primarily on early notification to occupants of the need to escape, followed by the appropriate egress actions by those occupants. Fire warning systems for dwelling units are capable of protecting about half of the occupants in potentially fatal fires. Victims are often intimate with the fire, too old or young, or physically or mentally impaired such that they cannot escape even when warned early enough that escape should be possible. For these people, other strategies such as protection-in-place or assisted escape or rescue are necessary.
- Smoke alarms are devices that can provide early warning of possible fires at a reasonable cost; however, alarms have sensing limitations. Ionization type alarms offer a broad range of fire sensing capabilities but are better at detecting fast flaming fires than slow smoldering fires. Photoelectric alarms sense smoldering fires better than flaming fires. Home fires develop in different ways and are often unpredictable. Neither type of alarm (photoelectric or ionization) is always best, and a given alarm may not always provide warning of a fire.
- A battery powered alarm must have a battery of the specified type, in good condition and installed properly.
- AC powered alarms (without battery backup) will not operate if the AC power has been cut off, such as by an electrical fire or an open fuse.
- Smoke alarms must be tested regularly to make sure the batteries and the alarm circuits are in good operating condition.
- Smoke alarms cannot provide an alarm if smoke does not reach the alarm. Therefore, smoke alarms may not sense fires starting in chimneys, walls, on roofs, on the other side of a closed door or on a different floor.

Fire Safety

- If the alarm is located outside the bedroom or on a different floor, it may not wake up a sound sleeper.
- The use of alcohol or drugs may also impair one's ability to hear the smoke alarm. For maximum protection, a smoke alarm should be installed in each sleeping area on every level of a home.
- Although smoke alarms can help save lives by providing an early warning of a fire, they are not a substitute for an insurance policy. Home owners, landlords and tenants should have adequate insurance to protect their lives and property.

Good Safety Habits

Develop and practice a plan of escape!

- Install and maintain Fire extinguishers on every level of the home and in the kitchen, basement and garage. Know how to use a fire extinguisher prior to an emergency.
- Make a floor plan indicating all doors and windows and at least two (2) escape routes from each room. Second story windows may need an escape ladder.
- Have a family meeting and discuss your escape plan, showing everyone what to do in case of fire.
- Determine a place outside your home where you all can meet if a fire occurs.
- Familiarize everyone with the sound of the smoke alarm and train them to leave your home when they hear it.
- Practice a fire drill at least every six months, including fire drills at night. Ensure that small children hear the alarm and wake when it sounds. They must wake up in order to execute the escape plan. Practice allows all occupants to test your plan before an emergency. You may not be able to reach your children. It is important they know what to do.

Fire Safety

Alarm Exit Procedure

- Alert small children in the home.
- Leave immediately by your escape plan. Every second counts, so don't waste time getting dressed or picking up valuables.
- In leaving, don't open any inside door without first feeling its surface. If hot, or if you see smoke seeping through cracks, don't open that door! Instead, use your alternate exit. If the inside of the door is cool, place your shoulder against it, open it slightly and be ready to slam it shut if heat and smoke rush in.
- Stay close to the floor if the air is smoky. If possible do not breathe too deeply to avoid smoke inhalation. Breathe through a cloth (preferably wet) if possible.
- Once outside, go to your selected meeting place and make sure everyone is there.
- Call the fire department from your neighbor's home - not from yours!
- Don't return to your home until the fire officials say that it is all right to do so.
- There are situations where a smoke alarm may not be effective to protect against fire as stated in the NFPA Standard 72. For instance:
 - smoking in bed;
 - leaving children unsupervised;
 - cleaning with flammable liquids, such as gasoline.
- Further information on fire safety can be obtained in a English language pamphlet titled "In a Fire Seconds Count" published by the NFPA, Batterymarch Park, Quincy, MA 02269.

NRC Information

Ionization type smoke alarms use a very small amount of a radioactive element in the sensing chamber to enable detection of visible and invisible combustion products. The radioactive element is safely contained in the chamber and requires no adjustments or maintenance. This smoke alarm meets or exceeds all government standards. It is manufactured and distributed under license from the U.S. Nuclear Regulatory Commission.

Fire Safety

Additional Recommendations

The National Fire Protection Association's Standard 72 provides the following information:

Smoke alarms shall be installed outside each separate sleeping area in the immediate vicinity of the bedrooms and on each additional story of the family living unit, including basements and excluding crawl spaces and unfinished attics. In new construction, a smoke alarm also shall be installed in each sleeping room.

Smoke Detection - Are More Smoke Alarms Desirable?

Required number of smoke alarms (as shown in Image 1A and Image 1B): The required number of smoke alarms might not provide reliable early warning protection for those areas separated by a door from the areas protected by the required smoke alarms. For this reason, it is recommended that the householder consider the use of additional smoke alarms for those areas for increased protection.

The additional areas include the basement, bedrooms, dining room, furnace room, utility room, and hallways not protected by the required smoke alarms. The installation of the smoke alarms in the kitchen, attic (finished or unfinished), or garage is normally not recommended, as these locations occasionally experience conditions that can result in improper operation.

Alarms should be installed in accordance with the National Fire Protection Association's Standard 72 (NFPA, Batterymarch Park, Quincy, MA 02269).

Notify your local fire department and insurance company of your smoke alarm installation.

Warranty

If after reviewing this manual you feel that your smoke alarm is defective in any way, do not tamper with the unit. In many cases, the quickest way to exchange your alarm is to return it to the original place of purchase. Alternatively, you may return it for servicing to Kidde. If you have questions, call Kidde Customer Service at 1-800-880-6788.

5 Year Limited Warranty

Kidde warrants to the original purchaser that the enclosed smoke alarm (but not the battery) will be free from defects in material and workmanship or design under normal use and service for a period of five years from the date of purchase. The obligation of Kidde under this warranty is limited to repairing or replacing the smoke alarm or any part which we find to be defective in material, workmanship or design, free of charge to the customer, upon sending the smoke alarm with proof of date of purchase, postage and return postage prepaid, to Kidde, Customer Service Department, 130 Esna Park Drive, Markham, ON L3R 1E3. 1-800-880-6788.

This warranty shall not apply to the smoke alarm if it has been damaged, modified, abused or altered after the date of purchase or if it fails to operate due to improper maintenance or inadequate AC or DC electrical power.

The liability of Kidde or any of its parent or subsidiary corporations arising from the sale of this smoke alarm or under the terms of this limited warranty shall not in any case exceed the cost of replacement of this smoke alarm and, in no case, shall Kidde or any of its parent or subsidiary corporations be liable for consequential loss or damages resulting from the failure of this smoke alarm or for breach of this or any other warranty, express or implied, even if the loss or damage is caused by the company's negligence or fault.

Since some provinces do not allow limitations on the duration of an implied warranty or do not allow the exclusion or limitation of incidental or consequential damages, the above limitations or exclusions may not apply to you. While this warranty gives you specific legal rights, you may also have other rights which vary from province to province.

Also, Kidde makes no warranty, express or implied, written or oral, including that of merchantability or fitness for any particular purpose, with respect to the battery.

The above warranty may not be altered except in writing signed by both parties hereto.

Free Manuals Download Website

<http://myh66.com>

<http://usermanuals.us>

<http://www.somanuals.com>

<http://www.4manuals.cc>

<http://www.manual-lib.com>

<http://www.404manual.com>

<http://www.luxmanual.com>

<http://aubethermostatmanual.com>

Golf course search by state

<http://golfingnear.com>

Email search by domain

<http://emailbydomain.com>

Auto manuals search

<http://auto.somanuals.com>

TV manuals search

<http://tv.somanuals.com>