

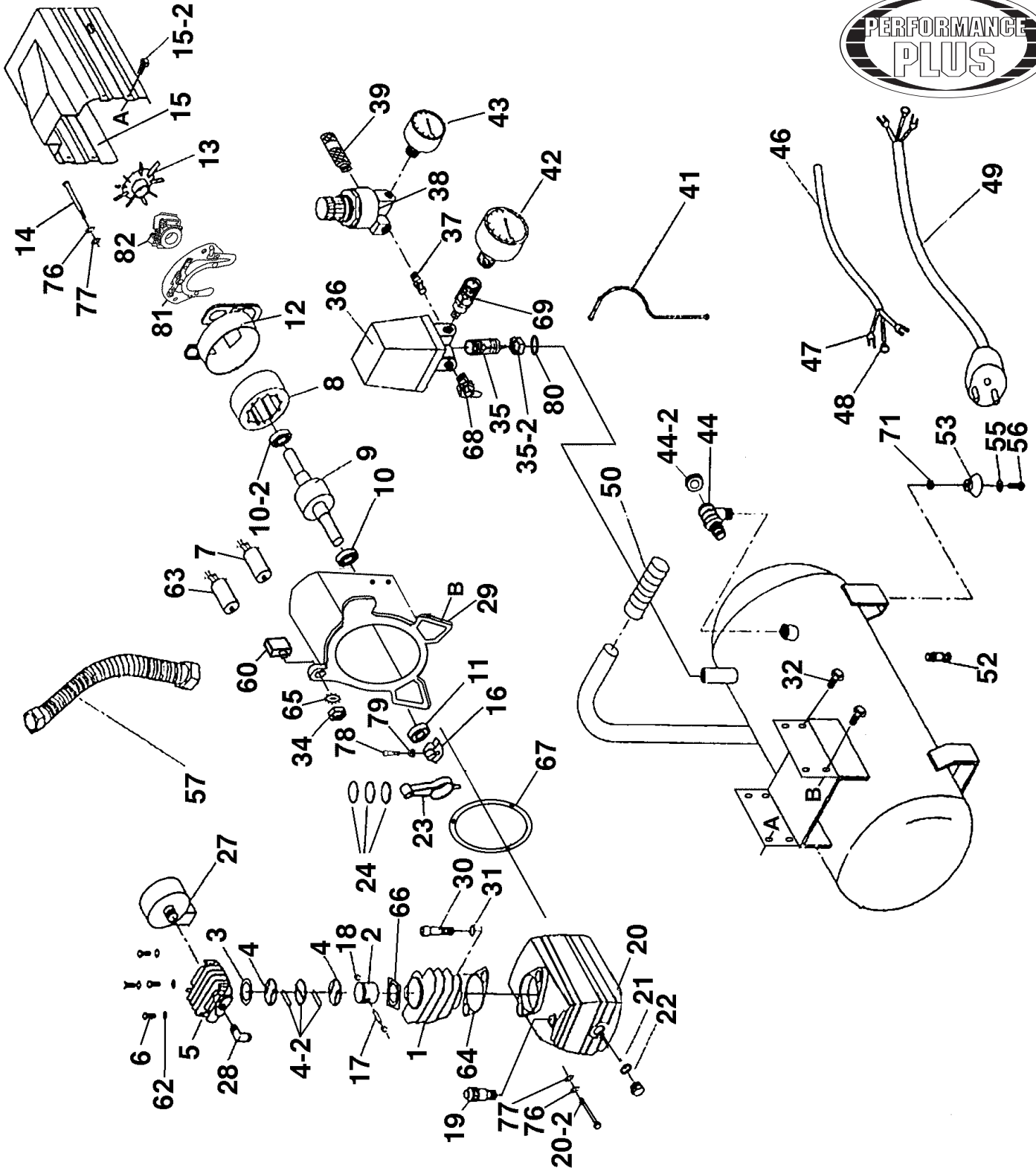


Air Compressor Compresseur à Air



Revised/Revisé 08/2008

8449





Parts Pricing List / Liste de Prix des Pièces

8449

| Diag. | Order # Com. | English Description | Description Française | Qty./Qté. | Price/Prix |
|-------|--------------|-------------------------------|-------------------------------|-----------|------------|
| 1 | 6284490010 | CYLINDER | CYLINDRE | 1 | \$18.34 |
| 2 | 6284490020 | PISTON | PISTON | 1 | \$14.66 |
| 3 | 6284490030 | CYLINDER HEAD GASKET | JOINT D'ETANCHEITE DE LA TETE | 1 | \$4.54 |
| 4 | 6284490040 | VALVE PLATE | PLAQUE DES VALVES | 2 | \$9.14 |
| 4-2 | 6284490042 | VALVE & GASKET KIT | JEU DE VALVES ET JOINT | 1 | \$6.61 |
| 5 | 6284490050 | CYLINDER HEAD | TETE DU CYLINDRE | 1 | \$18.34 |
| 6 | 6284490060 | CAP SCREW | BOULON A TETE CYLINDRIQUE | 4 | \$2.76 |
| 7 | 6284490070 | RUNNING CAPACITOR (40UF 250V) | CONDENSATEUR D'OPERATION | 1 | \$18.11 |
| 8 | 6284490080 | FIELD COIL | BOBINE D'ENTRAINEMENT | 1 | \$52.73 |
| 9 | 6284490090 | ARMATURE | ARMATURE | 1 | \$56.75 |
| 10 | 6284490100 | BALL BEARING | ROULEMENT A BILLES | 1 | \$12.59 |
| 10-2 | 6284490102 | BALL BEARING | ROULEMENT A BILLES | 1 | \$13.74 |
| 11 | 6284490110 | SHAFT SEAL | JOINT D'ETANCHEITE | 1 | \$4.43 |
| 12 | 6284490120 | REAR CAP | CAPUCHON DE PROTECTION | 1 | \$8.45 |
| 13 | 6284490130 | FAN | VENTILATEUR | 1 | \$5.00 |
| 14 | 6284490140 | SPECIAL BOLT (LONG) | BOULON SPECIAL (LONG) | 3 | \$3.28 |
| 15 | 6284490150 | PLASTIC MOTOR COVER | COUV. DU MOTEUR EN PLASTIQUE | 1 | \$22.60 |
| 15-2 | 6284490152 | FLANGE HD. BOLT | BOULON A BRIDE | 6 | \$1.55 |
| 16 | 6284490160 | CRANK SHAFT | VILEBREQUIN | 1 | \$10.18 |
| 17 | 6284490170 | WRIST PIN | GOUPILLE DU PISTON | 1 | \$5.00 |
| 18 | 6284490180 | RETAINING RING/BORE | ANNEAU DE RETENU/ALESAGE | 2 | \$2.24 |
| 19 | 6284490190 | OIL BREATHER CAP | CAPUCHON D'AERATION D'HUILE | 1 | \$5.69 |
| 20 | 6284490200 | HOUSING COVER | COUVERCLE DU BOITIER | 1 | \$34.21 |
| 20-2 | 6284490202 | CAP SCREW | BOULON A TETE CYLINDRIQUE | 3 | \$2.24 |
| 21 | 6284490210 | O-RING SEAL | JOINT D'ETANCHEITE | 1 | \$2.59 |
| 22 | 6284490220 | OIL SIGHT GLASS | BOUCHON DE VISIONNEMENT | 1 | \$4.54 |
| 23 | 6284490230 | CONNECTING ROD | TIGE DE CONNECTION | 1 | \$11.10 |
| 24 | 6284490240 | PISTON RING SET (3 PCS) | ENS. ANNEAU DE PISTON (3 MCX) | 1 | \$10.06 |
| 27 | 6284490270 | AIR FILTER | FILTRE A AIR | 1 | \$11.10 |
| 28 | 6284490280 | ELBOW EXHAUST | COUDE D'ECHAPPEMENT | 1 | \$3.28 |
| 29 | 6284490290 | MOTOR HOUSING | BOITIER DU MOTEUR | 1 | \$57.33 |
| 30 | 6284490300 | CAP SCREW | BOULON A TETE CYLINDRIQUE | 4 | \$2.76 |
| 31 | 6284490310 | SPRING WASHER | RONDELLE A RESSORT | 4 | \$1.50 |
| 32 | 6284490320 | FLANGE HD. BOLT | BOULON A BRIDE | 4 | \$1.67 |
| 34 | 6284490340 | HEX. NUT | ECROU HEXAGONAL | 1 | \$1.61 |
| 35 | 6284490350 | TANK ADAPTOR | ADAPTATEUR DU RESERVOIR | 1 | \$3.39 |
| 35-2 | 6284490352 | BRASS NUT | ECROU EN CUIVRE | 1 | \$2.93 |
| 36 | 6284490360 | PRESSURE SWITCH | MANOSTAT | 1 | \$38.81 |
| 37 | 6284490370 | CONNECTOR | RACCORD DE CONNECTION | 1 | \$4.31 |
| 38 | 6284490380 | PRESSURE REGULATOR | REGULATEUR DE PRESSION | 1 | \$21.79 |
| 39 | 6284490390 | AIR COCK | RACCORD DE CONNECTION A AIR | 1 | \$12.48 |
| 41 | 6284490410 | PIPE & COUPLING ASS'Y | TUYAU ET RACCORD ASSEMBLE | 1 | \$9.95 |
| 42 | 6284490420 | PRESSURE GAUGE | JAUGE DE PRESSION | 1 | \$16.04 |
| 43 | 6284490430 | PRESSURE GAUGE | JAUGE DE PRESSION | 1 | \$16.04 |
| 44 | 6284490440 | CHECK VALVE (SMALL) | SOUPAPE DE RETENUE | 1 | \$12.59 |
| 44-2 | 6284490442 | CHECK VALVE PLASTIC INSERT | INSERTION POUR SOUPAPE | 1 | \$2.24 |
| 46 | 6284490460 | ELECTRIC CABLE | CORDON ELECTRIQUE | 1 | \$10.06 |

Pricing subject to change without prior notice. / Prix sujet à changement sans préavis.



Parts Pricing List / Liste de Prix des Pièces

8449

| Diag. | Order # Com. | English Description | Description Française | Qty./Qté. | Price/Prix |
|-------|--------------|-----------------------------|--------------------------------|-----------|------------|
| 47 | 6284490470 | CABLE CONNECTOR (Y) | CONNECTEUR EN (Y) | 1 | \$2.24 |
| 48 | 6284490480 | CABLE CONNECTOR (O) | CONNECTEUR EN (O) | 1 | \$2.24 |
| 49 | 6284490490 | POWER CORD | CORDON D'ALIMENTATION | 1 | \$14.78 |
| 50 | 6284490500 | HANDLE | POIGNEE | 1 | \$3.16 |
| 52 | 6284490520 | DRAIN VALVE | SOUPAPE DE VIDANGE | 1 | \$5.58 |
| 53 | 6284490530 | RUBBER FOOT | PIED EN CAOUTCHOUC | 4 | \$3.39 |
| 55 | 6284490550 | WASHER | RONDELLE | 4 | \$1.55 |
| 56 | 6284490560 | HEX. BOLT | BOULON HEXAGONAL | 4 | \$1.84 |
| 57 | 6284490570 | EXHAUST PIPE ASS'Y | TUYAU DE REFROIDISSEMENT ASS. | 1 | \$22.94 |
| 60 | 6284490600 | RESET SAFETY BUTTON | RELAIS DE SECURITE | 1 | \$12.48 |
| 62 | 6284490620 | SPRING WASHER | RONDELLE A RESSORT | 4 | \$1.50 |
| 63 | 6284490630 | START. CAP. (200UF-125VAC) | CONDENSATEUR DE DEMARRAGE | 1 | \$19.38 |
| 64 | 6284490640 | GASKET | JOINT D'ETANCHEITE | 1 | \$3.74 |
| 65 | 6284490650 | TOOTH WASHER | RONDELLE DENTELEE | 1 | \$1.78 |
| 66 | 6284490660 | GASKET | JOINT D'ETANCHEITE | 1 | \$3.39 |
| 67 | 6284490670 | GASKET | JOINT D'ETANCHEITE | 1 | \$4.54 |
| 68 | 6284490680 | SAFETY VALVE | SOUPAPE DE SECURITE | 1 | \$12.59 |
| 69 | 6284490690 | PRESSURE GAUGE ADAPTOR | ADAPTATEUR DE JAUGE A PRESSION | 1 | \$4.54 |
| 71 | 6284490710 | HEX. NUT | ECROU HEXAGONAL | 4 | \$1.61 |
| 76 | 6284490760 | SPRING WASHER | RONDELLE A RESSORT | 6 | \$1.55 |
| 77 | 6284490770 | WASHER | RONDELLE | 6 | \$1.50 |
| 78 | 6284490780 | CAP SCREW | BOULON A TETE CYLINDRIQUE | 1 | \$2.47 |
| 79 | 6284490790 | HEX. NUT | ECROU HEXAGONAL | 1 | \$1.67 |
| 80 | 6284490800 | FIBER WASHER SET (2) | JEU RONDELLE DE FIBRE (2) | 1 | \$2.13 |
| 81 | 6284490810 | STARTER POINT | POINTE DE DEMARRAGE | 1 | \$18.34 |
| 82 | 6284490820 | CENTRIFUGAL STARTING SWITCH | COMMUTATEUR DE DEMARRAGE | 1 | \$20.64 |
| | 628449MBIL | BILINGUAL MANUAL 8449 | MANUEL BILINGUE 8449 | 1 | \$15.00 |

Pricing subject to change without prior notice. / Prix sujet à changement sans préavis.

Free Manuals Download Website

<http://myh66.com>

<http://usermanuals.us>

<http://www.somanuals.com>

<http://www.4manuals.cc>

<http://www.manual-lib.com>

<http://www.404manual.com>

<http://www.luxmanual.com>

<http://aubethermostatmanual.com>

Golf course search by state

<http://golfingnear.com>

Email search by domain

<http://emailbydomain.com>

Auto manuals search

<http://auto.somanuals.com>

TV manuals search

<http://tv.somanuals.com>