



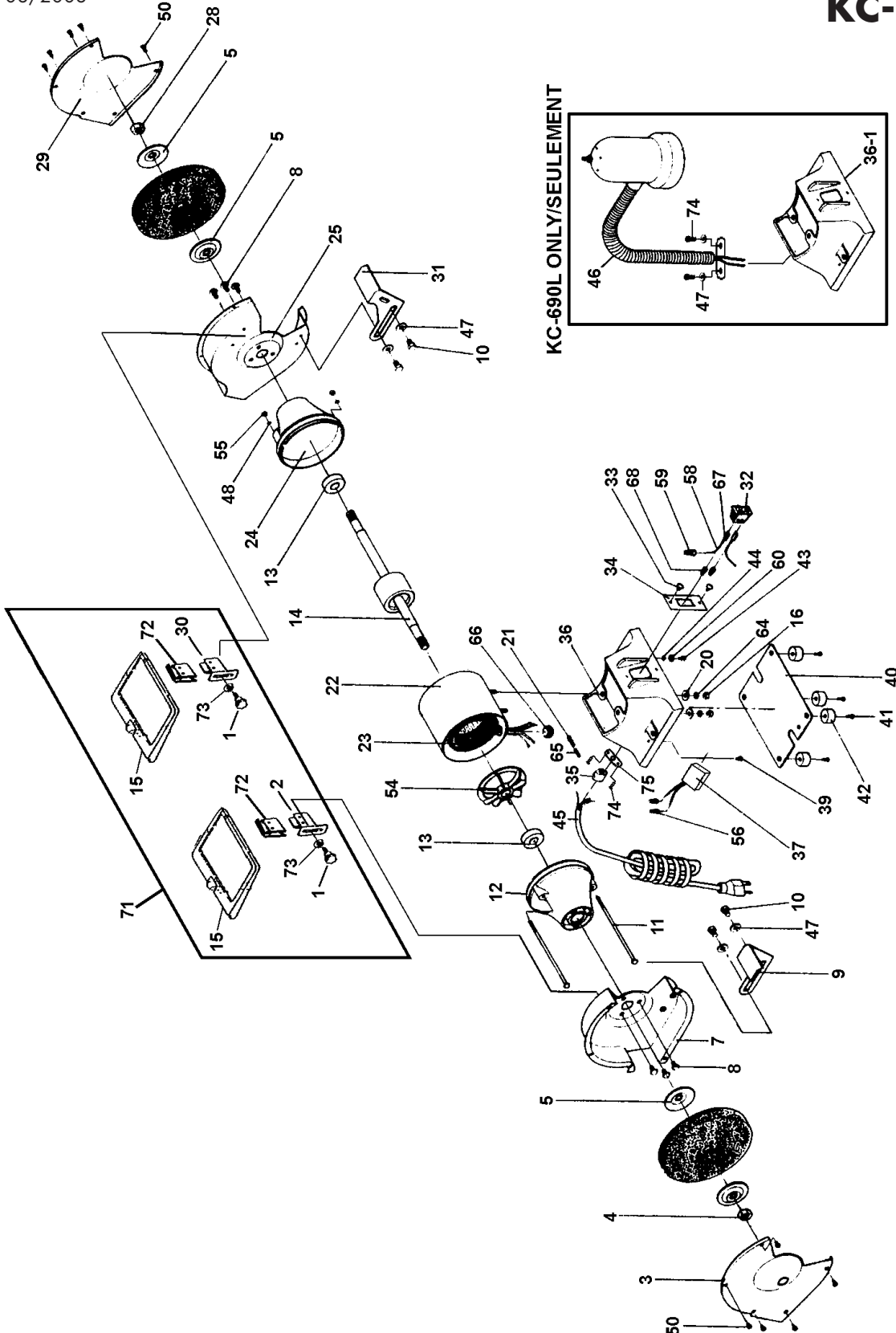
Service Manual / Manuel de Service

6" Bench Grinder Touret D'Établi 6"



Revised/Revisé 08/2008

KC-690(L)





Parts Pricing List / Liste de Prix des Pièces

KC-690(L)

Diag.	Order # Com.	English Description	Description Française	Qty./Qté.	Price/Prix
1	2506900010	LOCK KNOB	BOUTON DE SERRAGE	2	\$3.62
2	2506900020	SPARK BREAKER (LEFT)	BRISE ETINCELLES (GAUCHE)	1	\$3.85
3	2506900030	WHEEL COVER (LEFT)	COUVERCLE DE LA MEULE (GAUCHE)	1	\$13.63
4	2506900040	SPINDLE HEX. NUT (LEFT)	ECROU HEX. DE L'ARBRE (GAUCHE)	1	\$3.16
5	2506900050	ARBOR FLANGE	BRIDE DE L'ARBRE	4	\$4.43
7	2506900070	WHEEL GUARD (LEFT)	PROTECTEUR DE MEULE (GAUCHE)	1	\$17.65
8	2506900080	RD. HD. SCREW	VIS A TETE RONDE	6	\$1.67
9	2506900090	ADJUSTABLE REST (LEFT)	PORTE-OUTIL (GAUCHE)	1	\$5.58
10	2506900100	HEX. BOLT	BOULON HEXAGONAL	4	\$1.55
11	2506900110	SPECIAL LONG SCREW	VIS SPECIALE LONGUE	2	\$4.08
12	2506900120	MOTOR END HOUSING	BOUT DU BOITIER DU MOTEUR	1	\$18.11
13	2506900130	BALL BEARING	ROULEMENT A BILLES	1	\$11.44
14	2506900140	ARMATURE	ARMATURE	2	\$44.45
15	2506900150	EYESHIELD	PARE-ETINCELLES	2	\$4.54
16	2506900160	HEX. NUT	ECROU HEXAGONAL	2	\$1.55
20	2506900200	WASHER	RONDELLE	1	\$1.67
21	2506900210	SCREW	VIS	1	\$1.67
22	2506900220	MOTOR HOUSING	BOITIER DU MOTEUR	1	\$26.16
23	2506900230	FIELD COIL	BOBINE D'ENTRAINEMENT	1	\$57.33
24	2506900240	MOTOR END HOUSING	BOUT DU BOITIER DU MOTEUR	1	\$18.11
25	2506900250	WHEEL GUARD (RIGHT)	PROTECTEUR DE LA MEULE (DROIT)	1	\$17.65
28	2506900280	SPINDLE NUT (RIGHT)	ECROU DE L'ARBRE (DROIT)	1	\$3.16
29	2506900290	WHEEL COVER (RIGHT)	COUVERCLE DE LA MEULE (DROIT)	1	\$13.63
30	2506900300	SPARK BREAKER (RIGHT)	BRISE ETINCELLES (DROIT)	1	\$3.85
31	2506900310	ADJUSTABLE REST (RIGHT)	PORTE-OUTIL (DROIT)	1	\$5.58
32	2506900320	SWITCH (2 PRONG)	INTERRUPTEUR A BASCULE (2 PATTES)	1	\$10.06
33	2506900330	FLANGE HD. SCREW	VIS A TETE BRIDEE	2	\$1.55
34	2506900340	SWITCH PLATE	PLAQUE DE L'INTERRUPTEUR	1	\$2.70
35	2506900350	STRAIN RELIEF	ATTACHE CORDON	1	\$2.47
36	2506900360	BASE (KC-690)	SOCLE (KC-690)	1	\$25.01
36-1	2506900361	BASE (KC-690L)	SOCLE (KC-690L)	1	\$26.28
37	2506900370	SQUARE CAPACITOR	CONDENSATEUR	1	\$12.59
39	2506900390	FLANGE HD. SCREW	VIS A TETE BRIDEE	1	\$1.55
40	2506900400	BOTTOM COVER	PLAQUE DU SOCLE	1	\$3.97
41	2506900410	FLANGE HD. SCREW	VIS A TETE BRIDEE	4	\$1.78
42	2506900420	RUBBER FOOT	PIED EN CAOUTCHOUC	4	\$3.16
43	2506900430	GROUND SCREW	VIS MISE A LA TERRE	1	\$1.55
44	2506900440	WASHER	RONDELLE	1	\$1.55
45	2506900450	POWER CORD	CORDON D'ALIMENTATION	1	\$17.19
46	2506900460	WORK LIGHT (KC-690L)	LUMIERE DE TRAVAIL (KC-690L)	1	\$27.31
47	2506900470	WASHER	RONDELLE	6	\$1.55
48	2506900480	WASHER	RONDELLE	2	\$1.61
50	2506900500	RD. HD. SCREW	VIS A TETE RONDE	10	\$1.67
54	2506900540	FAN	VENTILATEUR	1	\$5.35
55	2506900550	NUT	ECROU	2	\$1.55
56	2506900560	CONNECTOR	MARRETTE	2	\$1.32
58	2506900580	WIRE	FIL	1	\$2.59

Pricing subject to change without prior notice. / Prix sujet à changement sans préavis.



Parts Pricing List / Liste de Prix des Pièces

KC-690(L)

Diag.	Order # Com.	English Description	Description Française	Qty./Qté.	Price/Prix
59	2506900590	CONNECTOR	MARRETTE	2	\$1.32
60	2506900600	SPECIAL WASHER	RONDELLE SPECIALE	1	\$1.67
64	2506900640	SPRING WASHER	RONDELLE A RESSORT	2	\$1.55
65	2506900650	TERMINAL BUSHING	BAGUE DE CONNECTION	1	\$1.55
66	2506900660	BUSHING	BAGUE	1	\$1.78
67	2506900670	CLIP TERMINAL	JOINT DE CONNECTION	2	\$2.13
68	2506900680	CLIP TERMINAL BUSHING	BAGUE DE CONNECTION	2	\$2.24
71	2506900710	EYESHIELD & HARDWARE KIT	ENS. DE PARE-ETINCELLES ET QUINC.	1	\$21.56
72	2506900720	EYESHIELD HOLDER	RETENEUR PARE-ETINCELLES	2	\$2.24
73	2506900730	WASHER	RONDELLE	2	\$1.55
74	2506900740	FLANGE HD. SCREW	VIS A TETE BRIDEE	4	\$1.55
75	2506900750	POWER CORD PLATE	PLAQUE/CORDON D'ALIMENTATION	1	\$3.28
	250690MBIL	BILINGUAL MANUAL KC-690(L)	MANUEL BILINGUE KC-690(L)	1	\$15.00

Pricing subject to change without prior notice. / Prix sujet à changement sans préavis.

Free Manuals Download Website

<http://myh66.com>

<http://usermanuals.us>

<http://www.somanuals.com>

<http://www.4manuals.cc>

<http://www.manual-lib.com>

<http://www.404manual.com>

<http://www.luxmanual.com>

<http://aubethermostatmanual.com>

Golf course search by state

<http://golfingnear.com>

Email search by domain

<http://emailbydomain.com>

Auto manuals search

<http://auto.somanuals.com>

TV manuals search

<http://tv.somanuals.com>