



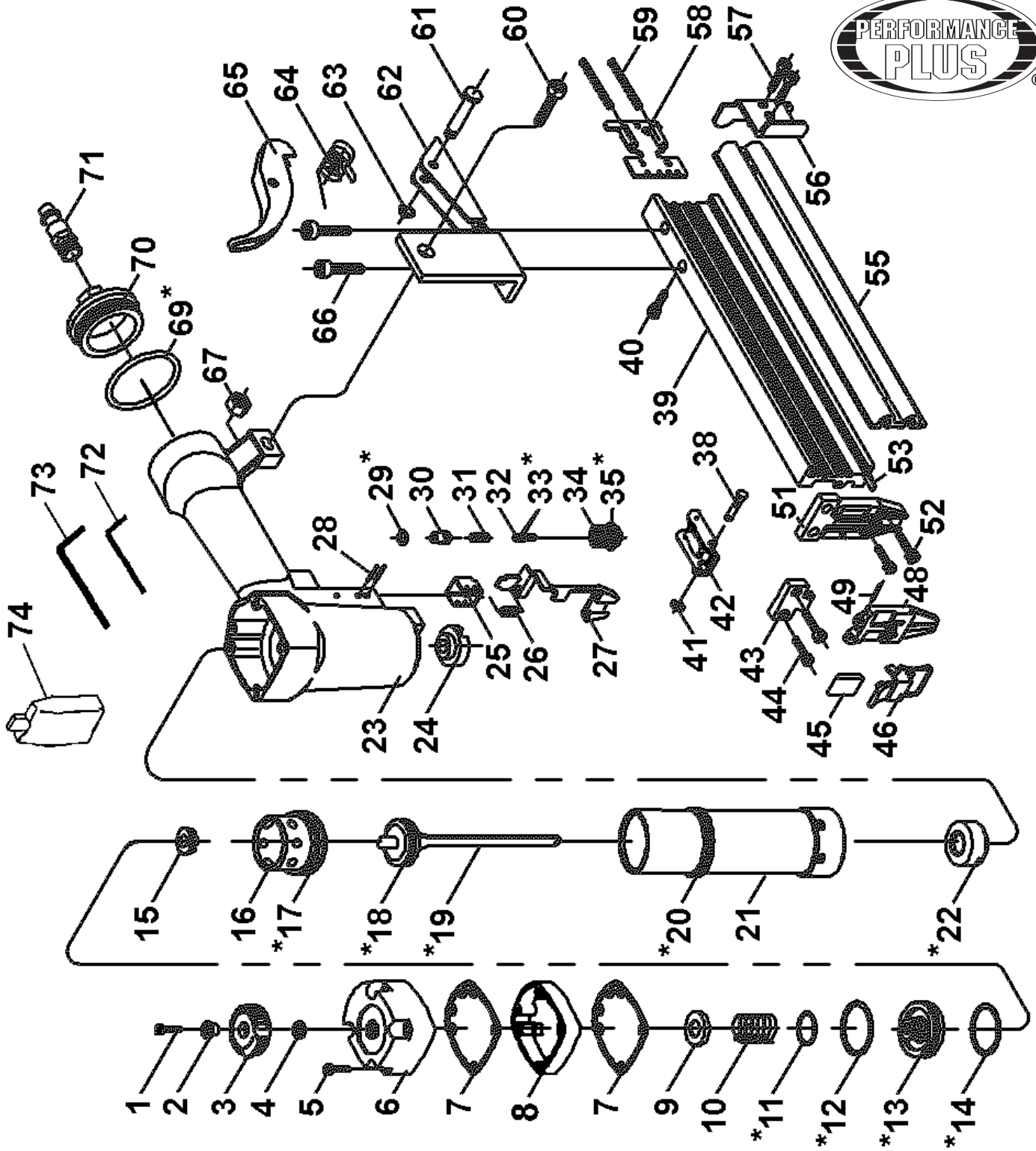
Service Manual / Manuel de Service

18 Ga. x 2" Brad Nailer Kit Ens. de Cloueuse de Finition 18 Ja. x 2"



Revised/Revisé 08/2008

8201N





Parts Pricing List / Liste de Prix des Pièces

8201N

Diag.	Order # Com.	English Description	Description Française	Qty./Qté.	Price/Prix
1	7082010010	CAP SCREW	BOULON A TETE CYLINDRIQUE	1	\$1.90
2	7082010020	SHOULDER BUSHING	BAGUE A EPAULEMENT	1	\$3.39
3	7082010030	AIR EXHAUST COVER	COUVERCLE D'ECHAPPEMENT	1	\$5.58
4	7082010040	RUBBER WASHER	RONDELLE EN CAOUTCHOUC	1	\$1.78
5	7082010050	CAP SCREW	BOULON A TETE CYLINDRIQUE	4	\$2.24
6	7082010060	CYLINDER CAP	COUVERCLE DU CYLINDRE	1	\$17.19
7	7082010070	GASKET	JOINT D'ETANCHEITE	2	\$4.20
8	7082010080	BODY EXTENSION	ALLONGEMENT DU BOITIER	1	\$4.54
9	7082010090	VALVE SEAL	JOINT D'ETANCHEITE/SOUPAPE	1	\$3.28
10	7082010100	VALVE SPRING	RESSORT DE LA SOUPAPE	1	\$4.08
11	KW-079	BUMPER/DRIVER/O-RING REPL. KIT	TROUSSE DE REMPL. TIGE/AMOR./JOINT	1	-
12	KW-079	BUMPER/DRIVER/O-RING REPL. KIT	TROUSSE DE REMPL. TIGE/AMOR./JOINT	1	-
13	KW-079	BUMPER/DRIVER/O-RING REPL. KIT	TROUSSE DE REMPL. TIGE/AMOR./JOINT	1	-
14	KW-079	BUMPER/DRIVER/O-RING REPL. KIT	TROUSSE DE REMPL. TIGE/AMOR./JOINT	1	-
15	7082010150	STOP WASHER	RONDELLE D'ARRET	1	\$3.05
16	7082010160	VALVE SEAT	SIEGE DE LA SOUPAPE	1	\$9.03
17	KW-079	BUMPER/DRIVER/O-RING REPL. KIT	TROUSSE DE REMPL. TIGE/AMOR./JOINT	1	-
18	KW-079	BUMPER/DRIVER/O-RING REPL. KIT	TROUSSE DE REMPL. TIGE/AMOR./JOINT	1	-
19	KW-079	BUMPER/DRIVER/O-RING REPL. KIT	TROUSSE DE REMPL. TIGE/AMOR./JOINT	1	-
20	KW-079	BUMPER/DRIVER/O-RING REPL. KIT	TROUSSE DE REMPL. TIGE/AMOR./JOINT	1	-
21	7082010210	CYLINDER	CYLINDRE	1	\$21.56
22	KW-079	BUMPER/DRIVER/O-RING REPL. KIT	TROUSSE DE REMPL. TIGE/AMOR./JOINT	1	-
23	7082010230	BODY W/GRIP ASSEMBLY	BOITIER A/POIGNEE ASSEMBLE	1	\$32.14
24	7082010240	JOINT GUIDE	GUIDE A EPAULEMENT	1	\$4.89
25	7082010250	SAFETY GUIDE	GUIDE DE SECURITE	1	\$3.05
26	7082010260	SPRING	RESSORT	1	\$3.16
27	7082010270	SAFETY BRACKET	SUPPORT DE SECURITE	1	\$8.45
28	7082010280	SPRING PIN	GOUPILLE A RESSORT	2	\$2.01
29	KW-079	BUMPER/DRIVER/O-RING REPL. KIT	TROUSSE DE REMPL. TIGE/AMOR./JOINT	1	-
30	7082010300	TRIGGER VALVE HEAD	TETE DE SOUPAPE/GACHETTE	1	\$5.69
31	7082010310	SPRING	RESSORT	1	\$3.16
32	7082010320	TRIGGER VALVE STEM	TIGE DE LA SOUPAPE	1	\$5.46
33	KW-079	BUMPER/DRIVER/O-RING REPL. KIT	TROUSSE DE REMPL. TIGE/AMOR./JOINT	2	-
34	7082010340	TRIGGER VALVE GUIDE	GUIDE DE LA TETE DE SOUPAPE	1	\$6.61
35	KW-079	BUMPER/DRIVER/O-RING REPL. KIT	TROUSSE DE REMPL. TIGE/AMOR./JOINT	1	-
38	7082010380	PIN	GOUPILLE	1	\$3.28
39	7082010390	MAGAZINE	CHARGEUR	1	\$32.03
40	7082010400	CAP SCREW	BOULON A TETE CYLINDRIQUE	1	\$1.67
41	7082010410	O-RING	JOINT D'ETANCHEITE	1	\$1.78
42	7082010420	TRIGGER & SPRING	GACHETTE ET RESSORT	1	\$4.31
43	7082010430	PLATE	PLAQUE	1	\$5.69
44	7082010440	CAP SCREW	BOULON A TETE CYLINDRIQUE	2	\$2.24
45	7082010450	RUBBER SLEEVE	MANCHON EN CAOUTCHOUC	1	\$1.90
46	7082010460	LATCH ASSEMBLY	ATTACHE DE RETENU ASSEMBLE	1	\$5.46
48	7082010480	FRONT PLATE	PLAQUE AVANT	1	\$21.79
49	7082010490	SPRING PIN	GOUPILLE A RESSORT	1	\$1.55
51	7082010510	DRIVER GUIDE	GUIDE DE LA TIGE DE POUSSER	1	\$27.54

Pricing subject to change without prior notice. / Prix sujet à changement sans préavis.



Parts Pricing List / Liste de Prix des Pièces

8201N

Diag.	Order # Com.	English Description	Description Française	Qty./Qté.	Price/Prix
52	7082010520	CAP SCREW	BOULON A TETE CYLINDRIQUE	2	\$2.01
53	7082010530	GUIDE STRIP	GUIDE D'ALIGNEMENT	1	\$4.54
55	7082010550	MOVEABLE MAGAZINE	COUVERCLE DU CHARGEUR	1	\$14.89
56	7082010560	STOP PLATE	PLAQUE D'ARRET	1	\$3.39
57	7082010570	CAP SCREW	BOULON A TETE CYLINDRIQUE	2	\$2.01
58	7082010580	SHOE FEEDER	GUIDE D'ALIMENTATION	1	\$4.43
59	7082010590	SPRING	RESSORT	2	\$4.43
60	7082010600	CAP SCREW	BOULON A TETE CYLINDRIQUE	1	\$2.24
61	7082010610	PIN	GOUPILLE	1	\$2.70
62	7082010620	SUPPORT	SUPPORT	1	\$5.69
63	7082010630	RETAINING RING "E"	ANNEAU DE RETENU EN "E"	1	\$1.50
64	7082010640	TORSION SPRING	RESSORT	1	\$2.70
65	7082010650	LATCH	LOQUET ASSEMBLE	1	\$3.39
66	7082010660	CAP SCREW	BOULON A TETE CYLINDRIQUE	2	\$2.01
67	7082010670	HEX. NUT	ECROU HEXAGONAL	1	\$1.55
69	KW-079	BUMPER/DRIVER/O-RING REPL. KIT	TROUSSE DE REMPL. TIGE/AMOR./JOINT	1	-
70	7082010700	END CAP	COUVERCLE ARRIERE	1	\$6.50
71	7082010710	AIR INLET	PRISE D'AIR	1	\$4.43
72	7082010720	HEX. KEY (3MM)	CLE HEXAGONALE (3MM)	1	\$2.59
73	7082010730	HEX. KEY (4MM)	CLE HEXAGONALE (4MM)	1	\$2.70
74	7082010740	OIL BOTTLE	HUILIER	1	\$4.31
	708201MBIL	BILINGUAL MANUAL 8201N	MANUEL BILINGUE 8201N	1	\$15.00

*These parts are only available as an accessory "Bumper, Driver & O-Ring Replacement Kit" model: KW-079.

*Ces pièces sont seulement disponibles en accessoire comme "Trousse de Remplacement Tige de Pousser, Amortisseur & Joint Toriques" modèle: KW-079.

Free Manuals Download Website

<http://myh66.com>

<http://usermanuals.us>

<http://www.somanuals.com>

<http://www.4manuals.cc>

<http://www.manual-lib.com>

<http://www.404manual.com>

<http://www.luxmanual.com>

<http://aubethermostatmanual.com>

Golf course search by state

<http://golfingnear.com>

Email search by domain

<http://emailbydomain.com>

Auto manuals search

<http://auto.somanuals.com>

TV manuals search

<http://tv.somanuals.com>