



Service Manual / Manuel de Service

12" Sliding Dual Compound Miter Saw with Twin Laser

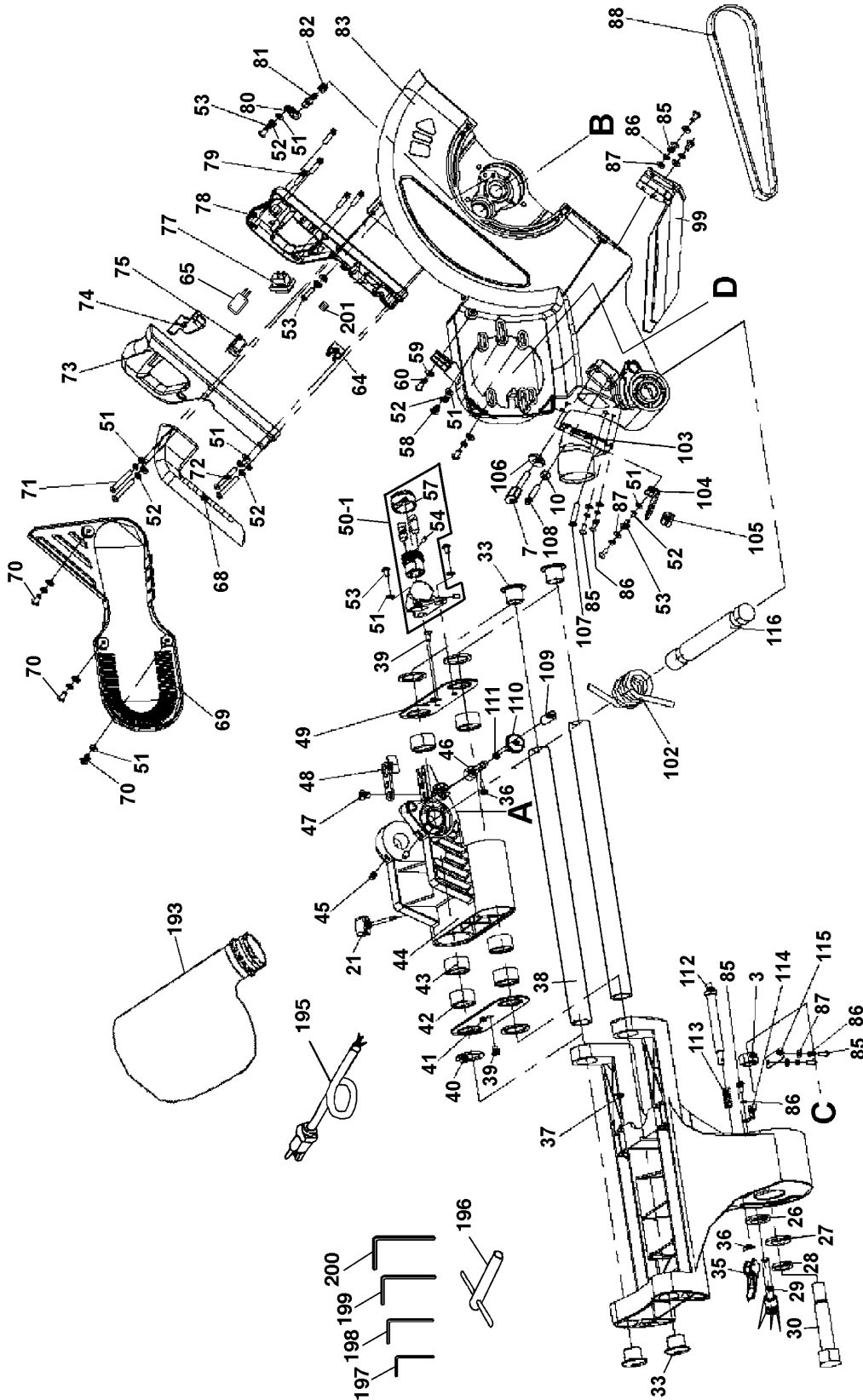
Scie à Onglets Radiale 12" à Double Angles Composés avec Guide à Deux Lasers



Revised/Revisé 08/2008

Main Diagram / Diagramme Principale

8392N





Service Manual / Manuel de Service

12" Sliding Dual Compound Miter Saw with Twin Laser

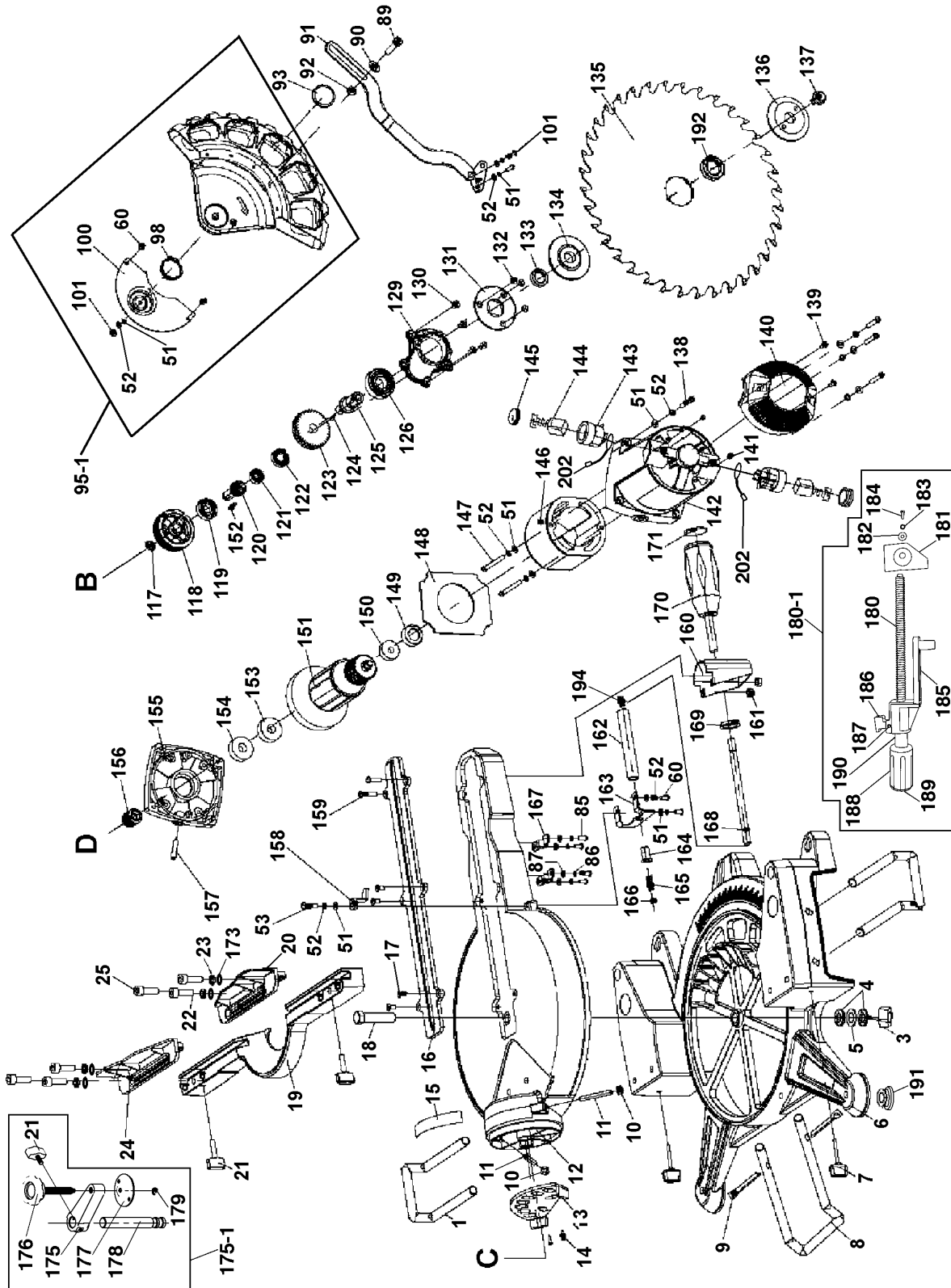
Scie à Onglets Radiale 12" à Double Angles Composés avec Guide à Deux Lasers



Revised/Revisé 08/2008

Motor & Base Diagram / Diagramme du Moteur et de la Base

8392N





Parts Pricing List / Liste de Prix des Pièces

8392N

Diag.	Order # Com.	English Description	Description Française	Qty./Qté.	Price/Prix
1	4893820010	EXTENSION WING	RALLONGE D'EXTENSION	2	\$13.74
3	4893820030	NYLON HEX. NUT	ECROU HEXAGONAL AVEC NYLON	2	\$2.47
4	4893820040	WASHER	RONDELLE	2	\$1.67
5	4893820050	WAVE WASHER	RONDELLE ONDULEE	1	\$1.55
6	4893820060	BASE	BASE	1	\$74.69
7	4893820070	LOCK KNOB	BOUTON DE VERROUILLAGE	3	\$4.08
8	4893820080	REAR SUPPORT	SUPPORT ARRIERE	1	\$11.44
9	4893820090	COTTER PIN	GOUPILLE FENDUE	2	\$2.47
10	4893820100	HEX. NUT	ECROU HEXAGONAL	3	\$1.55
11	4893820110	SET SCREW	VIS SANS TETE	2	\$2.47
12	4893820120	TABLE	TABLE	1	\$80.44
13	4893820130	SAW ARM LOCK PLATE	PLAQUE DE VERROUILLAGE DU BRAS	1	\$10.29
14	4893820140	SHOULDER SCREW	VIS A EPAULE	2	\$3.39
15	4893820150	ANGLE SCALE	EHELLE DU BISEAU	1	\$3.16
16	4893820160	TABLE INSERT	INSERTION DE TABLE	1	\$7.99
17	4893820170	COUNTERSUNK SCREW	VIS A TETE FRAISEE	4	\$1.55
18	4893820180	TABLE HEX. BOLT	BOULON HEXAGONAL DE LA TABLE	1	\$3.74
19	4893820190	FENCE	GUIDE D'APPUI	1	\$27.31
20	4893820200	FENCE EXTENSION (LEFT)	EXTENSION DE GUIDE (GAUCHE)	1	\$13.74
21	4893820210	LOCK KNOB	BOUTON DE VERROUILLAGE	5	\$3.39
22	4893820220	CAP SCREW	BOULON A TETE CYLINDRIQUE	4	\$2.70
23	4893820230	SPRING WASHER	RONDELLE A RESSORT	4	\$1.55
24	4893820240	FENCE EXTENSION (RIGHT)	EXTENSION DE GUIDE (DROIT)	1	\$13.74
25	4893820250	CAP SCREW	BOULON A TETE CYLINDRIQUE	2	\$1.90
26	4893820260	WASHER	RONDELLE	1	\$1.67
27	4893820270	WASHER	RONDELLE	1	\$2.01
28	4893820280	DOUBLE COIL SPRING	RONDELLE A RESSORT DOUBLE	1	\$4.54
29	4893820290	LOCKING LEVER SCREW	VIS DU LEVIER DE VERROUILLAGE	1	\$7.99
30	4893820300	SAW ARM BOLT	BOULON DE BRAS	1	\$5.69
33	4893820330	THREADED CAP	BOUCHON FILETEE	4	\$3.28
35	4893820350	SAW ARM POSTING LEVER	LEVIER DE POSITIONNEMENT DU BRAS	1	\$4.54
36	4893820360	SPRING PIN	GOUPILLE A RESSORT	2	\$2.01
37	4893820370	SAW ARM	BRAS DE SCIE	1	\$63.19
38	4893820380	GUIDE BAR	BARRE DE GUIDE	2	\$16.04
39	4893820390	COUNTERSUNK HD SCREW	VIS A TETE FRAISEE	2	\$1.55
40	4893820400	RUBBER WASHER	RONDELLE EN CAOUTCHOUC	4	\$2.47
41	4893820410	BACK COVER	COUVERCLE ARRIERE	1	\$4.89
42	4893820420	LINEAR BEARING	ROULEMENT A BILLES LINEAIRE	4	\$32.14
43	4893820430	BUSHING	MANCHON	2	\$4.54
44	4893820440	SLIDE BOX	BOITE DE COULISSEMENT	1	\$68.94
45	4893820450	SET SCREW	VIS SANS TETE	2	\$1.55
46	4893820460	LOCKING PIN	GOUPILLE DE VERROUILLAGE	1	\$3.39
47	4893820470	SHOULDER SCREW	VIS A EPAULEMENT	1	\$3.16
48	4893820480	DEPTH STOP PLATE	PLAQUE D'ARRET DE PROFONDEUR	1	\$4.20
49	4893820490	FRONT COVER	COUVERCLE AVANT	1	\$4.89
50-1	4893820501	LASER GUIDE ASSEMBLY	GUIDE DE LASER ASSEMBLEE	1	\$22.94
51	4893820510	WASHER	RONDELLE	28	\$1.67

Pricing subject to change without prior notice. / Prix sujet à changement sans préavis.



Parts Pricing List / Liste de Prix des Pièces

8392N

Diag.	Order # Com.	English Description	Description Française	Qty./Qté.	Price/Prix
52	4893820520	SPRING WASHER	RONDELLE A RESSORT	25	\$1.55
53	4893820530	PAN HD SCREW	VIS A TETE BOMBEE	7	\$1.55
54	4893820540	SET SCREW	VIS SANS TETE	4	\$1.50
57	4893820570	CLEAR LASER COVER	COUV. DU LASER TRANSPARENT	1	\$3.39
58	4893820580	PAN HD SCREW	VIS A TETE BOMBEE	6	\$1.73
59	4893820590	TOOTHED WASHER	RONDELLE DENTELEE	1	\$1.67
60	4893820600	PAN HD SCREW	VIS A TETE BOMBEE	5	\$1.55
64	4893820640	TERMINAL BLOCK	BLOC CONNECTEUR	1	\$3.39
65	4893820650	MICRO-SWITCH	INTERRUPTEUR DE CONTACT	1	\$18.34
68	4893820680	CARRYING HANDLE	POIGNEE DE TRANSPORT	1	\$21.79
69	4893820690	BELT COVER	COUVERCLE DE LA COURROIE	1	\$20.64
70	4893820700	PAN HD SCREW	VIS A TETE BOMBEE	3	\$1.55
71	4893820710	PAN HD SCREW	VIS A TETE BOMBEE	2	\$2.01
72	4893820720	PAN HD SCREW	VIS A TETE BOMBEE	2	\$1.78
73	4893820730	UPPER HANDLE	POIGNEE DU HAUT	1	\$22.94
74	4893820740	TRIGGER	GACHETTE	1	\$22.94
75	4893820750	TRANSFORMER	TRANSFORMATEUR	1	\$28.75
77	4893820770	LASER SWITCH	INTERRUPTEUR POUR LASER	1	\$11.44
78	4893820780	LOWER HANDLE	POIGNEE DU BAS	1	\$22.94
79	4893820790	TAPPING SCREW	VIS AUTOTARAUDEUSE	5	\$2.01
80	4893820800	LOCKING PIN PLATE	PLAQUE DE LA GOUPILLE DE VERR.	1	\$4.43
81	4893820810	BLADE LOCKING PIN	GOUPILLE DE LA VERR. DE LA LAME	1	\$5.46
82	4893820820	LOCKING PIN SPRING	RESSORT DE LA GOUPILLE DE VERR.	1	\$3.39
83	4893820830	UPPER BLADE GUARD	PROTEGE-LAME (HAUT)	1	\$91.94
85	4893820850	PAN HD SCREW	VIS A TETE BOMBEE	11	\$1.55
86	4893820860	SPRING WASHER	RONDELLE A RESSORT	11	\$1.55
87	4893820870	WASHER	RONDELLE	10	\$1.55
88	4893820880	DRIVE BELT	COURROIE D'ENTRAINEMENT	1	\$40.19
89	4893820890	CAP SCREW	BOULON A TETE CYLINDRIQUE	1	\$2.01
90	4893820900	WASHER	RONDELLE	1	\$1.55
91	4893820910	RETRACTING LEVER	LEVIER DE RETRACTION	1	\$14.89
92	4893820920	BUSHING	BAGUE	1	\$2.70
93	4893820930	SPRING COVER	COUVERCLE DE RESSORT	1	\$5.23
95-1	4893820951	LOWER BLADE GUARD ASS'Y	PROTEGE-LAME DU BAS ASSEMBLE	1	\$51.69
98	4893820980	BLADE GUARD SPRING	RESSORT DU PROTEGE-LAME	1	\$5.00
99	4893820990	DUST CHUTE	SORTIE DE POUSSIERE	1	\$11.44
100	4893821000	PROTECTIVE PLATE	PLAQUE DE PROTECTION	1	\$6.84
101	4893821010	CAP SCREW	BOULON A TETE CYLINDRIQUE	3	\$1.78
102	4893821020	TORSION SPRING	RESSORT A TORSION	1	\$11.44
103	4893821030	DUST TUBE	TUBE POUR POUSSIERE	1	\$6.84
104	4893821040	CORD BRACKET	SUPPORT POUR CABLE	1	\$4.54
105	4893821050	CORD CLAMP	SERRE CORDON	1	\$2.59
106	4893821060	SPECIAL NUT	ECROU SPECIAL	1	\$2.70
107	4893821070	SET SCREW	VIS SANS TETE	1	\$1.61
108	4893821080	SET SCREW	VIS SANS TETE	1	\$2.19
109	4893821090	SPECIAL SCREW	VIS SPECIAL	1	\$4.08
110	4893821100	LOCKING PIN KNOB	BOUTON DE LA GOUPILLE DE VERR.	1	\$4.20

Pricing subject to change without prior notice. / Prix sujet à changement sans préavis.



Parts Pricing List / Liste de Prix des Pièces

8392N

Diag.	Order # Com.	English Description	Description Française	Qty./Qté.	Price/Prix
111	4893821110	LOCKING PIN SPRING	RESSORT DE LA GOUPILLE DE VERR.	1	\$3.39
112	4893821120	SAW ARM POSITIONING PIN	GOUPILLE DE POSITIONNEMENT	1	\$5.69
113	4893821130	SAW ARM POSITIONING PIN SPRING	RESSORT DE LA GOUPILLE DE POS.	1	\$4.08
114	4893821140	SAW ARM POINTER	INDICATEUR DU BRAS DE SCIE	1	\$2.01
115	4893821150	STOP PLATE	PLAQUE D'ARRET	1	\$3.74
116	4893821160	PIVOT PIN	GOUPILLE DE PIVOTEMENT	1	\$10.29
117	4893821170	RETAINING RING/SHAFT	ANNEAU DE RETENU/TIGE	1	\$1.55
118	4893821180	BLADE PULLEY	POULIE DE LA LAME	1	\$17.19
119	4893821190	BALL BEARING	ROULEMENT A BILLES	1	\$13.74
120	4893821200	BLADE PULLEY SHAFT	TIGE DE LA POULIE DE LAME	1	\$22.94
121	4893821210	BALL BEARING	ROULEMENT A BILLES	1	\$17.19
122	4893821220	BALL BEARING	ROULEMENT A BILLES	1	\$20.64
123	4893821230	DRIVE GEAR	ENGRENAGE D'ENTRAINEMENT	1	\$22.94
124	4893821240	KEY	CLE DE RETENU	1	\$1.84
125	4893821250	BLADE DRIVE SHAFT	TIGE D'ENTRAINEMENT DE LA LAME	1	\$22.94
126	4893821260	BALL BEARING	ROULEMENT A BILLES	1	\$12.59
129	4893821290	BEARING CASE	BOITIER DE ROULEMENTS	1	\$20.64
130	4893821300	COUNTERSUNK HD SCREW	VIS A TETE FRAISEE	4	\$1.55
131	4893821310	BEARING COVER	COUVERCLE DE ROULEMENT	1	\$1.67
132	4893821320	COUNTERSUNK HD SCREW	VIS A TETE FRAISEE	1	\$1.67
133	4893821330	BLADE SPACER RING	ANNEAU D'ESPACEMENT DE LA LAME	1	\$3.28
134	4893821340	INNER BLADE FLANGE	BRIDE DE LA LAME INTERNE	1	\$4.54
135	4893821350	BLADE	LAME	1	N/A
136	4893821360	OUTER BLADE FLANGE	BRIDE DE LA LAME EXTERNE	1	\$3.28
137	4893821370	BLADE FIXING BOLT	BOULON DE FIXATION DE LA LAME	1	\$1.78
138	4893821380	PAN HD SCREW	VIS A TETE BOMBEE	4	\$1.67
139	4893821390	TAPPING SCREW	VIS AUTOTARAUDEUSE	2	\$21.79
140	4893821400	MOTOR COVER	COUVERCLE ARRIERE DU MOTEUR	1	\$2.82
141	4893821410	RUBBER INSERT	INSERTION EN CAOUTCHOUC	2	\$43.64
142	4893821420	MOTOR HOUSING	BOITIER DU MOTEUR	1	\$4.54
143	4893821430	CARBON BRUSH HOLDER	PORTE-BALAI	2	\$16.04
144	4893821440	CARBON BRUSH SET (2)	JEU DE BALAIS AU CARBONE (2)	1	\$2.59
145	4893821450	CARBON BRUSH CAP	CAPUCHON DES BALAIS	2	\$80.44
146	4893821460	FIELD COIL	BOBINE D'ENTRAINEMENT	1	\$2.30
147	4893821470	PAN HD SCREW	VIS A TETE BOMBEE	2	\$6.73
148	4893821480	WIND GUARD	PROTECTEUR DU VENTILATEUR	1	\$3.39
149	4893821490	BEARING PROTECTOR	PROTECTION DE ROULEMENT	1	\$14.89
150	4893821500	BALL BEARING	ROULEMENT A BILLES	1	\$114.94
151	4893821510	ARMATURE ASSEMBLY	ARMATURE ASSEMBLEE	1	\$1.84
152	4893821520	KEY	CLE DE RETENU	1	\$16.04
153	4893821530	BALL BEARING	ROULEMENT A BILLES	1	\$3.28
154	4893821540	SPACER	ESPACEUR	1	\$32.14
155	4893821550	HOUSING COVER	COUVERCLE DU BOITIER	1	\$14.89
156	4893821560	MOTOR PULLEY	POULIE DU MOTEUR	1	\$2.01
157	4893821570	SET SCREW	VIS SANS TETE	1	\$4.54
158	4893821580	TABLE POINTER	INDICATEUR DE LA TABLE	1	\$2.13
159	4893821590	COUNTERSUNK HD SCREW	VIS A TETE FRAISEE	2	

Pricing subject to change without prior notice. / Prix sujet à changement sans préavis.



Parts Pricing List / Liste de Prix des Pièces

8392N

Diag.	Order # Com.	English Description	Description Française	Qty./Qté.	Price/Prix
160	4893821600	FRONT TURN TABLE SUPPORT	SUPPORT AVANT DE LA TABLE	1	\$10.29
161	4893821610	HEX. NUT	ECROU HEXAGONAL	2	\$1.55
162	4893821620	TABLE LOCK TUBE	TUBE POUR VERR. DE LA TABLE	1	\$5.69
163	4893821630	LOCK SPRING HOLDER	SUPPORT DU RESSORT DE VERR.	1	\$4.54
164	4893821640	SPRING BASE	BASE DU RESSORT	1	\$4.43
165	4893821650	SPRING	RESSORT	1	\$2.59
166	4893821660	STEEL BALL	BILLE D'ACIER	1	\$2.47
167	4893821670	SUPPORT BRACKET	SUPPORT DE RETENUE	2	\$3.28
168	4893821680	LOCK SHAFT	TIGE DE VERROUILLAGE	1	\$3.74
169	4893821690	PRESSURE WASHER	RONDELLE A PRESSION	1	\$5.69
170	4893821700	TABLE LOCK HANDLE	POIGNEE DE VERROUILLAGE	1	\$11.44
171	4893821710	LOCK HANDLE COVER	COUVERCLE DE LA POIGNEE DE VERR.	1	\$2.82
173	4893821730	WASHER	RONDELLE	4	\$1.55
175	4893821750	WISE ARM	BRAS SUPPORT DE L'ETAU	1	\$5.69
175-1	4893821751	COMPLETE VISE ASS'Y	ETAU COMPLET ASSEMBLE	1	\$20.53
176	4893821760	WISE KNOB	BOUTON DE L'ETAU	1	\$7.76
177	4893821770	WISE HOLD FLANGE	BRIDE D'APPUI	1	\$3.74
178	4893821780	WISE SHAFT	TIGE DE L'ETAU	1	\$6.61
179	4893821790	"E" RETAINING RING	ANNEAU DE RETENU EN "E"	1	\$1.60
180	4893821800	LEAD SCREW	TIGE SANS FIN	1	\$14.89
180-1	4893821801	CLAMP ASSEMBLY	ASSEMBLAGE DE LA SERRE	1	\$34.44
181	4893821810	CLAMPING PLATE	PLAQUE DE LA SERRE	1	\$5.69
182	4893821820	WASHER	RONDELLE	1	\$1.50
183	4893821830	SPRING WASHER	RONDELLE RESSORT	1	\$1.55
184	4893821840	PAN HD SCREW	VIS A TETE BOMBEE	1	\$1.61
185	4893821850	CLAMP BRACKET	SUPPORT DE LA SERRE	1	\$22.94
186	4893821860	LEAD SCREW HOOK	VERROU DE LA TIGE SANS FIN	1	\$11.44
187	4893821870	SPRING PIN	GOUPILLE A RESSORT	1	\$2.24
188	4893821880	CLAMP HANDLE	POIGNEE DE LE SERRE	1	\$5.69
189	4893821890	HANDLE COVER	COUVERCLE DE LA POIGNEE	1	\$2.82
190	4893821900	SPRING PIN	GOUPILLE A RESSORT	1	\$2.01
191	4893821910	RUBBER FOOT	PIED EN CAOUTCHOUC	4	\$3.39
192	4893821920	5/8" TO 1" ARBOR ADAPTOR	ADAPTATEUR DE LAME 5/8" A 1"	1	\$4.54
193	4893821930	DUST BAG	SAC A POUSSIERE	1	\$20.64
194	4893821940	HEX. NUT	ECROU HEXAGONAL	1	\$1.61
195	4893821950	POWER CORD	CORDON D'ALIMENTATION	1	\$26.39
196	4893821960	BLADE KEY	CLE DE LA LAME	1	\$9.95
197	4893821970	HEX. KEY (2MM)	CLE HEXAGONALE (2MM)	1	\$3.39
198	4893821980	HEX. KEY (3MM)	CLE HEXAGONALE (3MM)	1	\$2.59
199	4893821990	HEX. KEY (5MM)	CLE HEXAGONALE (5MM)	1	\$2.82
200	4893822000	HEX. KEY (6MM)	CLE HEXAGONALE (6MM)	1	\$2.93
201	4893822010	TRIGGER SPRING	RESSORT DE LA GACHETTE	1	\$3.39
202	4893822020	CARBON BRUSH WIRE	FIL DU BALAI	2	\$4.31
	489382MBIL	BILINGUAL MANUAL 8392N	MANUEL BILINGUE 8392N	1	\$15.00

*Pricing subject to change without prior notice. / Prix sujet à changement sans préavis.

Free Manuals Download Website

<http://myh66.com>

<http://usermanuals.us>

<http://www.somanuals.com>

<http://www.4manuals.cc>

<http://www.manual-lib.com>

<http://www.404manual.com>

<http://www.luxmanual.com>

<http://aubethermostatmanual.com>

Golf course search by state

<http://golfingnear.com>

Email search by domain

<http://emailbydomain.com>

Auto manuals search

<http://auto.somanuals.com>

TV manuals search

<http://tv.somanuals.com>