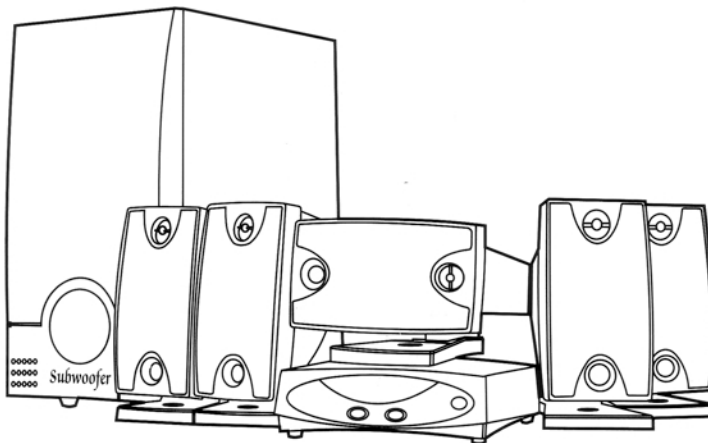




KINYO

5.1 HOME THEATER SPEAKER SYSTEM

User's Guide



Please read and understand all safety instructions before use.

R-565

PACKAGE CONTENTS

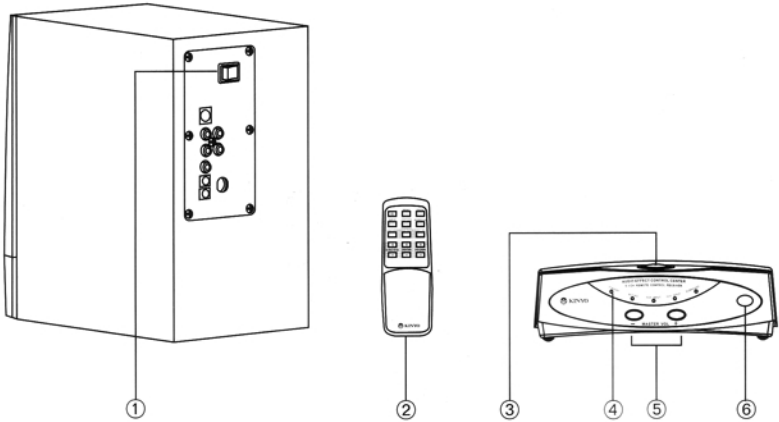
RB-6A Control Unit.....	X 1
Remote Controller (DR-30A).....	X 1
Subwoofer Speaker (SW-6000).....	X 1
Satellite Speaker (RS-25).....	X 5
Speaker Racks (J-22).....	X 4
User 's Guide.....	X 1
RCA Plug 2CH (RCA To Mini plug)	X 1
RCA Plug 6CH (G9 Din To 6 RCA).....	X 2
DC Power Cable.....	X 1
Battery(UM-4).....	X 2

This system is designed to be used with DVD player equipped with Dolby Digital™ decoder.

This system is equipped with 2 auxiliary inputs. The six-channel(6 CH) input is specifically designed for DVD audio connection. The two-channel (2CH) input is designed to accept stereo signal from VCR, and home stereo equipment.

5.1 Home Theater Speakers

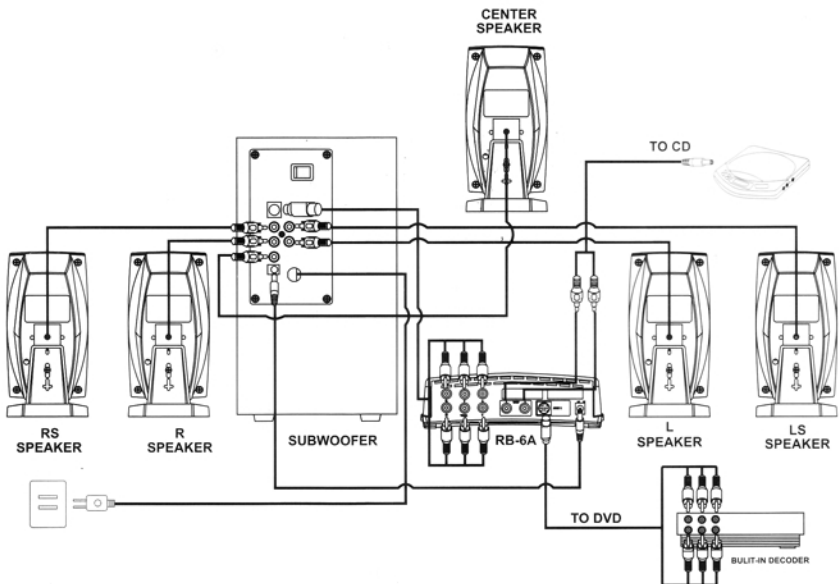
LOCATION OF CONTROLS



CONTROLS: (REFER TO ABOVE NUMBER)

MODEL NO .	①	②	③	④	⑤	⑥
R-565	SUBWOOFER POWER	REMOTE CONTROLLER	POWER	LED INDICATOR	MASTER VOLUME	REMOTE IR RECEIVE

SYSTEM CONNECTION



A. CONNECTING SUBWOOFER TO SATELLITE SPEAKERS :

1. Connect RCA jacks of the right rear surround speaker to the right rear surround channel RCA socket of the subwoofer.
2. Connect RCA jacks of the right speaker to the right channel RCA socket of the subwoofer.
3. Connect RCA jacks of the left rear surround speaker to the left rear surround channel RCA socket of the subwoofer.
4. Connect RCA jacks of the left speaker to the left channel RCA socket of the subwoofer.
5. Connect RCA jacks of the center speaker to the center channel RCA socket of the subwoofer.

B. CONNECTING SUBWOOFER TO CONTROL UNIT :

Plug one end of the G9 cable into the G9 socket at the back of the SUBWOOFER and the other end into the RCA socket at the back of the CONTROL UNIT as indicated on the diagram.

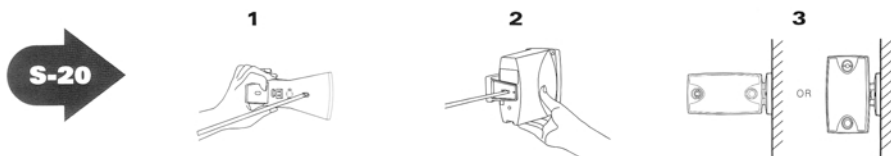
C. CONNECTING AUDIO SIGNAL TO CONTROL UNIT :

1. Use the G9 cable for audio signal input. Connect one end of the G9 cable to the audio source and the other end to the control unit.
2. Use the RCA cable to input analog stereo audio signals.

D. CONNECTING POWER TO THE SYSTEM :

1. Use the DC power-supply cable to connect the subwoofer's DC power output to the DC power input of the control unit.
(The power source specifications requirement of the control unit is DC 12V 500mA.)
2. Connect the subwoofer's AC plug to the electrical wall outlet directly.

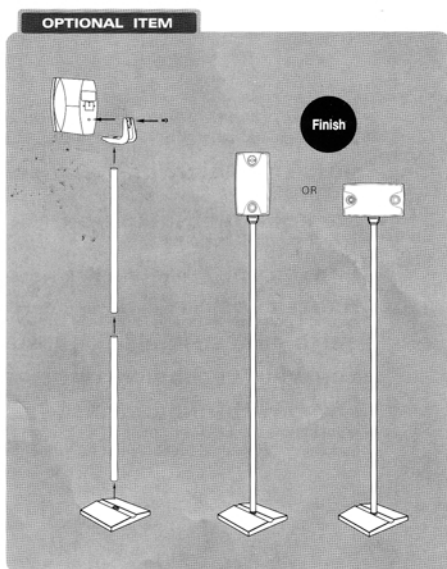
Depending on the environment, satellite speakers(center,left,right,rear left, and rear right)can be placed on the wall or desktop. Please try a variety of positions until the best possible sound effect is achieved. Also, space limitations may make it necessary to place them vertically or horizontally, and the speaker grill covers can be dismantled and reinstalled with ease when the speakers are positioned.



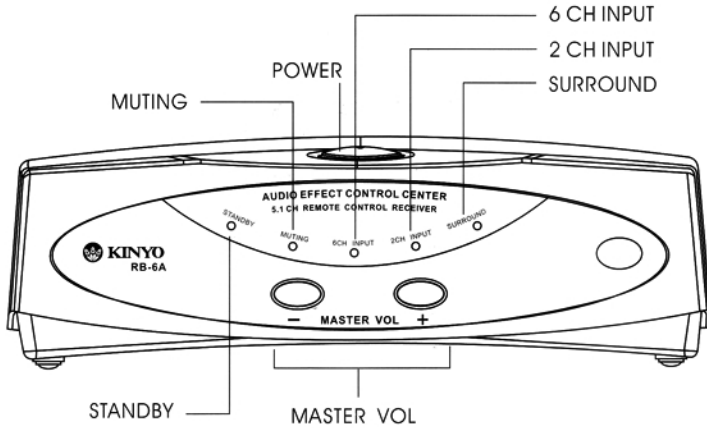
J-22 SETTING INSTRUCTION-A



J-22 SETTING INSTRUCTION-B



RB-6A CONTROL UNIT FUNCTIONS (FRONT PANEL):



POWER: Use the button to operate power on / off

MUTE LED INDICATOR: This LED will flash when in mute mode and the LED light will be turned off when not in mute mode.

SURROUND LED INDICATOR: This LED will light up when in 2CH input mode . (This function does not operate upon 6CH input.)

MASTER VOL +: Press this key to increase master volume level

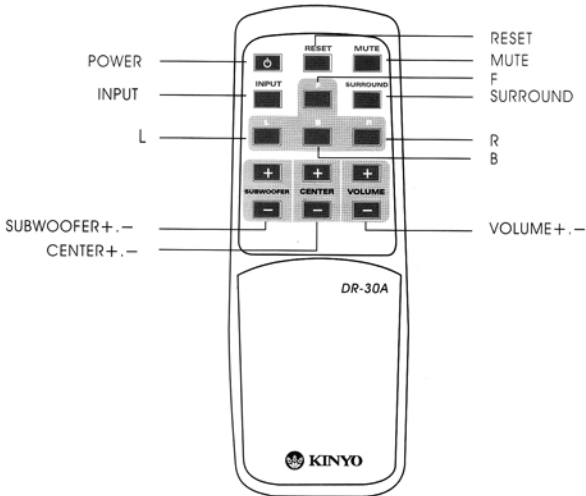
MASTER VOL -: Press this key to decrease master volume level

2 CH INPUT LED INDICATOR: This LED indicates the system is in 2-channel input mode.

6 CH INPUT LED INDICATOR: This LED indicates the system is in 6-channel input mode.

STANDBY LED INDICATOR: This LED indicates the system is in standby mode. When making functional adjustments the LED will flash. This LED will light up when the volume is adjusted to either maximum or minimum, indicating the volume level cannot be further increased or decreased.

REMOTE CONTROL FUNCTIONS:



POWER: Press this key to operate power on / off

RESET: In the 6CH mode, press this key and the volume in each audio channel will return to its default value. In the 2CH mode, press this key and it will erase the SURROUND effect and return to its default value.

MUTE: Press this key to turn mute on and off.

SURROUND: Before operating this function, make sure the system is in the 2CH mode. Otherwise it will not function when the key is pressed.

INPUT: Press this key for 6CH / 2CH switch over.

"F"BUTTON: In the 6CH mode, press this key and the volume level on center front left, and front right channel will increase and volume level on the rear left and rear right SURROUND channel will decrease.

"B"BUTTON: In the 2CH mode, press this key when SURROUND is on, the volume level on the center, front left, and front right channel will increase and the volume level on the rear left and rear right SURROUND channel will decrease. When the SURROUND mode is off, press this button the volume level on center, front left and front right channel will increase and the volume will be turned off on rear left and rear right SURROUND channel.

"L"BUTTON: In the 6CH mode, press this key and the volume level on the front left and rear left SURROUND channel will increase. The volume on the front right and rear right SURROUND channel will decrease, and the center channel will not be affected.

In the 2CH mode, press this key when SURROUND is on, the volume on the front left and rear left channel will increase and the front right channel and rear right SURROUND channel will decrease.

Press this key when SURROUND is off and the volume on the front left channel will increase, and the front right channel will decrease. The rear left and rear right SURROUND channel will have no output.

"R"BUTTON: In the 6CH mode, press this key and the volume on the front left channel and the rear left SURROUND channel will decrease. The front right channel and the rear right SURROUND channel will increase. The center channel will not be affected.

In the 2CH mode, press this key when SURROUND is on, the volume on the front right channel and the rear right SURROUND channel will increase and volume on the front left channel and the rear left SURROUND channel will decrease.

Press this key when SURROUND is off, the volume on the front right channel will increase and the front left channel will decrease, and the rear left and rear right SURROUND channel will have no output.

SUBWOOFER+: Press this key to increase the subwoofer volume level.

SUBWOOFER-: Press this key to decrease the subwoofer volume level.

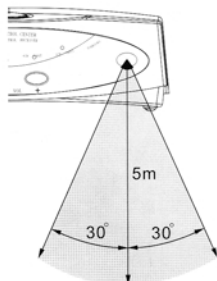
CENTER+: Press this key to increase the center volume level.

CENTER-: Press this key to decrease the center volume level.

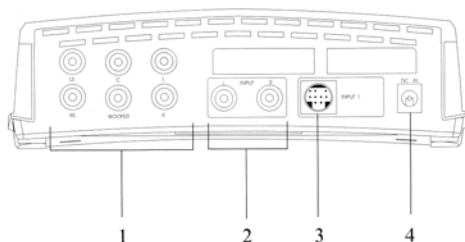
MASTER VOL+: Press this key to increase the master volume level.

MASTER VOL-: Press this key to decrease the master volume level.

ACCEPTABLE RANGE OF REMOTE CONTROLLER:



RB-6A CONTROL UNIT CONNECTIONS(REAR PANEL):



1. 6-CHANNEL OUTPUT

2. LEFT / RIGHT CHANNEL STEREO EFFECT (ANALOG) INPUT

3. 6-CHANNEL INPUT

4. DC 12V POWER INPUT

PROBLEMS AND SOLUTIONS

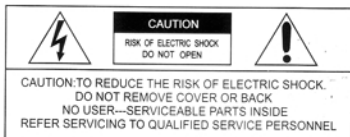
This appendix describes basic troubleshooting to help you solving problems, you might have with the 5.1 Home theater Speaker System. Care and cleaning information, as well as Technical Support information are also provided.

This section lists common questions and answers to installation and connection problems you may experience with the 5.1 Home Theater speaker System if applying these methods does not solve the problem, contact Technical Support for further assistance.

Problem	Cause	Remedy
No Sound	Speakers not properly connected incorrect input mode Amplifier is off/malfunction	Check cables for short or open connections Select proper audio source (Digital or Analog) Check your amplifier
Weak sound	Volume control down Speak cable shorted or have broken strands	Turn volume control up Check cables
Buzzing sound	Speaker cable (wire) short	Check cable wiring
No balance contro	Check balance control setting	Adjust balance control
Excessive Highs or lows	Speaker out of circuit	Check speaker

Note: 1.The amplifier is assumed to work properly.

2.When the unit is not in use, make sure to turn the power off on both the RB-6A control unit and the subwoofer unit. It is a normal condition to have low humming noise from the subwoofer if the power is left on .



WARNING
TO REDUCE THE RISK OF FIRE OR ELECTRIC SHOCK, DO NOT EXPOSE THIS APPLIANCE TO RAIN OR MOISTURE.

CAUTION
PILOT LAMP SOLDERED IN PLACE. TO REDUCE THE RISK OF ELECTRIC SHOCK, REFER TO QUALIFIED SERVICE PERSONNEL.



Attention, presence of dangerous voltage located within enclosure.



Attention, consult instruction manual for important operating and maintenance (servicing) instructions.

the apparatus shall not be exposed to dripping or splashing and that no objects filled with liquids, such as vases, shall be placed on the apparatus.

SPECIFICATIONS

⊙ Control unit (RB-6A)

- Audio Input:
 - Analog: Stereo RCA X 2
G9 X 1
 - LED Display
- Power, Volume +, Volume- Controls
- Remote Control Receiver
- Output:
 - RCA: L, R, LS, RS, C, Subwoofer Channels
 - Dimensions: W183 X H60 X D132mm (7 1/4 X 2 1/4 X 5 1/4 inch)

⊙ Remote Controller (DR-30A)

⊙ 5.1 Home Theater Speaker:

- Front satellite speaker and surround speaker and central speaker:
 - Standard output power of each 5W sound box (RS-25 satellite speaker)
 - 3" Full Range speaker
 - 80Hz~20KHz response frequency
 - Impedance 4 ohm
 - External dimensions: W 162x H 90x D 140mm (6 3/8x 3 1/2x 5 1/2 inch)

⊙ Subwoofer:

- 6 1/2" subwoofer standard output power: 40W RMS
- 40Hz~120Hz L.F.E.
- Impedance 4 ohm
- LED , power switch
- SW-6000 external dimensions: W 190 x H 356 x D 325 mm (7 1/2 x 14 x 12 3/4 inch)

Free Manuals Download Website

<http://myh66.com>

<http://usermanuals.us>

<http://www.somanuals.com>

<http://www.4manuals.cc>

<http://www.manual-lib.com>

<http://www.404manual.com>

<http://www.luxmanual.com>

<http://aubethermostatmanual.com>

Golf course search by state

<http://golfingnear.com>

Email search by domain

<http://emailbydomain.com>

Auto manuals search

<http://auto.somanuals.com>

TV manuals search

<http://tv.somanuals.com>