

# Printing System (U)

**KM-3035/4035/5035**

## **Printer Option Operation Guide**

**<Functions Edition>**

### **Introduction**

- 1. Operation Keys
- 2. Procedure for Making Settings
- 3. Menu Flow Chart
- 4. Selecting the Printer Settings
- 5. Options
- 6. KX Driver (Specific function)
- [Link to the KX Printer Drivers Operation Guide](#)

# Introduction

---


## About this Operation Guide

This Operation Guide is included with your Printing System (N) and should be read in combination with the Operation Guide <Set-Up Edition> for that product.

This Operation Guide contains information on making settings in your printer.

The explanations in this Operation Guide were written with the assumption that the user has a basic understanding of how to work in Microsoft Windows. For further information on using Windows, refer to your Microsoft Windows manual.

## Trademark Information

- PRESCRIBE and ECOSYS are registered trademarks of Kyocera Corporation.
- KPDL and KIR are trademarks of Kyocera Corporation.
- Microsoft, MS-DOS, Windows and WindowsNT are registered trademarks of Microsoft Corporation of America and other countries.
- WINDOWS ME is a trademark of Microsoft Corporation.
- PCL and P.JL are registered trademarks of Hewlett-Packard Company.
- PostScript is a registered trademark of Adobe Systems Incorporated.
- Ethernet is a registered trademark of Xerox Corporation.
- Novell and NetWare are registered trademarks of Novell, Inc.
- Centronics is a trademark of Centronics Data Computer Corporation.
- IBM and IBM PC-AT are trademarks of International Business Machines Corporation.
- PowerPC and Microdrive are trademarks of International Business Machines Corporation of America and other corporations.
- TrueType and Macintosh are registered trademarks of Apple Computer, Inc.
- AppleTalk is a trademark of Apple Computer, Inc.
- CompactFlash and CF are trademarks of SanDisk Corporation of America.
- This product was developed using Tornado, the real-time operating system (ROTS) general development environment from Wind River Systems, Inc.
- This printer uses PeerlessPrintXL, a PCL compatibility system developed by Peerless Group, to emulate the HP LaserJet Printer Control Language (PCL6). PeerlessPrintXL is a trademark of Peerless Group (Redondo Beach, CA 90278, U.S.A.).
- **AGFA**  Contains UFST™ and MicroType® from Agfa Corporation.

All other company and product names contained in this Operation Guide are trademarks or registered trademarks of their respective companies. The designations ™ and © will not be used in this Operation Guide.



All rights reserved. No part of this material may be reproduced or transmitted in any form or by any means, electronic or mechanical, including photocopying, recording or by any information storage and retrieval system, without permission in writing from the Publisher.

### Legal Restriction On Copying

- It may be prohibited to copy copyrighted material without permission of the copyright owner.
- It is prohibited under any circumstances to copy domestic or foreign currencies.
- Copying other items may be prohibited.

## IBM PROGRAM LICENSE AGREEMENT

THE DEVICE YOU HAVE PURCHASED CONTAINS ONE OR MORE SOFTWARE PROGRAMS ("PROGRAMS") WHICH BELONG TO INTERNATIONAL BUSINESS MACHINES CORPORATION ("IBM"). THIS DOCUMENT DEFINES THE TERMS AND CONDITIONS UNDER WHICH THE SOFTWARE IS BEING LICENSED TO YOU BY IBM. IF YOU DO NOT AGREE WITH THE TERMS AND CONDITIONS OF THIS LICENSE, THEN WITHIN 14 DAYS AFTER YOUR ACQUISITION OF THE DEVICE YOU MAY RETURN THE DEVICE FOR A FULL REFUND. IF YOU DO NOT SO RETURN THE DEVICE WITHIN THE 14 DAYS, THEN YOU WILL BE ASSUMED TO HAVE AGREED TO THESE TERMS AND CONDITIONS.

The Programs are licensed not sold. IBM, or the applicable IBM country organization, grants you a license for the Programs only in the country where you acquired the Programs. You obtain no rights other than those granted you under this license.

The term "Programs" means the original and all whole or partial copies of it, including modified copies or portions merged into other programs. IBM retains title to the Programs. IBM owns, or has licensed from the owner, copyrights in the Programs.

### 1. License

Under this license, you may use the Programs only with the device on which they are installed and transfer possession of the Programs and the device to another party. If you transfer the Programs, you must transfer a copy of this license and any other documentation to the other party. Your license is then terminated. The other party agrees to these terms and conditions by its first use of the Program.

You may not:

- 1) use, copy, modify, merge, or transfer copies of the Program except as provided in this license;
- 2) reverse assemble or reverse compile the Program; or
- 3) sublicense, rent, lease, or assign the Program.

### 2. Limited Warranty

The Programs are provided "AS IS."

THERE ARE NO OTHER WARRANTIES COVERING THE PROGRAMS (OR CONDITIONS), EXPRESS OR IMPLIED, INCLUDING, BUT NOT LIMITED TO, THE IMPLIED WARRANTIES OF MERCHANTABILITY AND FITNESS FOR A PARTICULAR PURPOSE.

Some jurisdictions do not allow the exclusion of implied warranties, so the above exclusion may not apply to you.

## SUPPLEMENT TO AGREEMENT FOR SOFTWARE BUNDLING AND DISTRIBUTION FOR ALDC

### 3. Limitation of Remedies

IBM's entire liability under this license is the following;

- 1) For any claim (including fundamental breach), in any form, related in any way to this license, IBM's liability will be for actual damages only and will be limited to the greater of;
  - a) the equivalent of U.S.\$25,000 in your local currency; or
  - b) IBM's then generally available license fee for the Program

This limitation will not apply to claims for bodily injury or damages to real or tangible personal property for which IBM is legally liable. IBM will not be liable for any lost profits, lost savings, or any incidental damages or other economic consequential damages, even if IBM, or its authorized supplier, has been advised of the possibility of such damages. IBM will not be liable for any damages claimed by you based on any third party claim. This limitation of remedies also applies to any developer of Programs supplied to IBM. IBM's and the developer's limitations of remedies are not cumulative. Such developer is an intended beneficiary of this Section. Some jurisdictions do not allow these limitations or exclusions, so they may not apply to you.

### 4. General

You may terminate your license at any time. IBM may terminate your license if you fail to comply with the terms and conditions of this license. In either event, you must destroy all your copies of the Program. You are responsible for payment of any taxes, including personal property taxes, resulting from this license. Neither party may bring an action, regardless of form, more than two years after the cause of action arose. If you acquired the Program in the United States, this license is governed by the laws of the State of New York. If you acquired the Program in Canada, this license is governed by the laws of the Province of Ontario. Otherwise, this license is governed by the laws of the country in which you acquired the Program.

## Typeface Trademark Acknowledgement

All resident fonts in this printer are licensed from Agfa Corporation.

Helvetica, Palatino and Times are registered trademarks of Linotype-Hell AG.

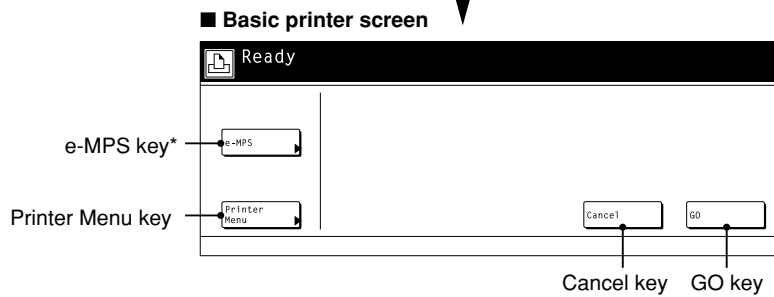
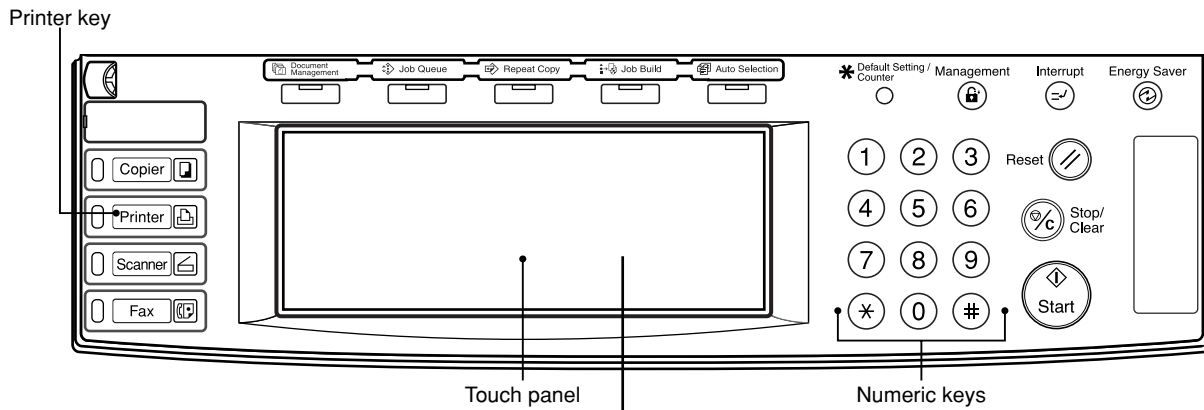
ITC Avant Garde Gothic, ITC Bookman, ITC ZapfChancery and ITC Zapf Dingbats are registered trademarks of International Typeface

Corporation.

## Agfa Japan License Agreement

1. "Software" shall mean the digitally encoded, machine readable, scalable outline data as encoded in a special format as well as the UFST Software.
2. You agree to accept a non-exclusive license to use the Software to reproduce and display weights, styles and versions of letters, numerals, characters and symbols ("Typefaces") solely for your own customary business. Agfa Japan retains all rights, title and interest to the Software and Typefaces and no rights are granted to you other than a License to use the Software on the terms expressly set forth in this Agreement.
3. To protect proprietary rights of Agfa Japan, you agree to maintain the Software and other proprietary information concerning the Typefaces in strict confidence and to establish reasonable procedures regulating access to and use of the Software and Typefaces.
4. You agree not to duplicate or copy the Software or Typefaces, except that you may make one backup copy.
5. This License shall continue until the last use of the Software and Typefaces, unless sooner terminated. This License may be terminated by Agfa Japan if you fail to comply with the terms of this License and such failure is not remedied within thirty (30) days after notice from Agfa Japan. When this License expires or is terminated, you shall either return to Agfa Japan or destroy all copies of the Software and Typefaces and documentation as requested.
6. You agree that you will not modify, alter, disassemble, decrypt, reverse engineer or decompile the Software.
7. Agfa Japan warrants that for ninety (90) days after delivery, the Software will perform in accordance with Agfa Japan-published specifications. Agfa Japan does not warrant that the Software is free from all bugs, errors and omissions. THE PARTIES AGREE THAT ALL OTHER WARRANTIES, EXPRESSED OR IMPLIED, INCLUDING WARRANTIES OF FITNESS FOR A PARTICULAR PURPOSE AND MERCHANTABILITY, ARE EXCLUDED.
8. Your exclusive remedy and the sole liability of Agfa Japan in connection with the Software and Typefaces is repair or replacement of defective parts, upon their return to Agfa Japan. IN NO EVENT WILL AGFA JAPAN BE LIABLE FOR LOST PROFITS, LOST DATA, OR ANY OTHER INCIDENTAL OR CONSEQUENTIAL DAMAGES, OR ANY DAMAGES CAUSED BY ABUSE OR MISAPPLICATION OF THE SOFTWARE AND TYPEFACES.
9. New York, U.S.A. law governs this Agreement.
10. You shall not sublicense, sell, lease, or otherwise transfer the Software and/or Typefaces without the prior written consent of Agfa Japan.
11. Use, duplication or disclosure by the Government is subject to restrictions as set forth in the Rights in Technical Data and Computer Software clause at FAR 252-227-7013, subdivision (b)(3)(ii) or subparagraph (c)(1)(ii), as appropriate. Further use, duplication or disclosure is subject to restrictions applicable to restricted rights software as set forth in FAR 52.227-19 (c)(2).
12. YOU ACKNOWLEDGE THAT YOU HAVE READ THIS AGREEMENT, UNDERSTAND IT, AND AGREE TO BE BOUND BY ITS TERMS AND CONDITIONS. NEITHER PARTY SHALL BE BOUND BY ANY STATEMENT OR REPRESENTATION NOT CONTAINED IN THIS AGREEMENT. NO CHANGE IN THIS AGREEMENT IS EFFECTIVE UNLESS WRITTEN AND SIGNED BY PROPERLY AUTHORIZED REPRESENTATIVES OF EACH PARTY.

# 1. Operation Keys



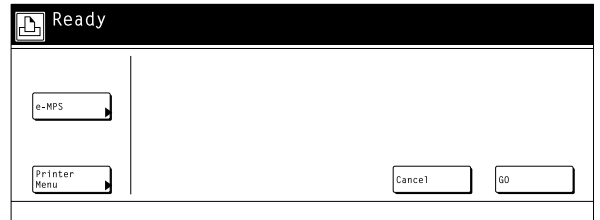
\* Displayed only when "ON" is selected under the RAM disk ON/OFF setting or the optional hard disk is installed.

- Printer key:** Press when you want to switch the machine to the Printer mode and have the basic printer screen displayed on the touch panel.
- Numeric keys:** Use to enter values for the various settings of this machine.
- Touch panel:** Displays operational procedures, error or trouble information and the various operation keys.

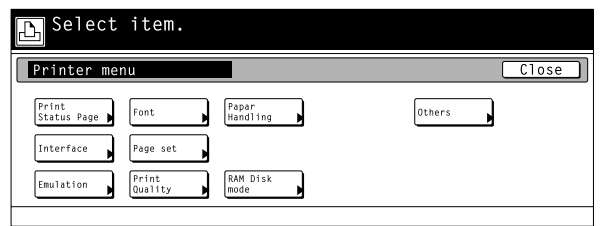
# 2. Procedure for Making Settings

**1** Press the Printer key. The machine will switch to the printer mode.

**2** Touch the "Printer Menu".  
The [Printer Menu] screen will appear.



**3** Select the desired settings that you want to make. (Refer to "3. Menu Flow Chart" on page 3-1 for a list of the various settings.)

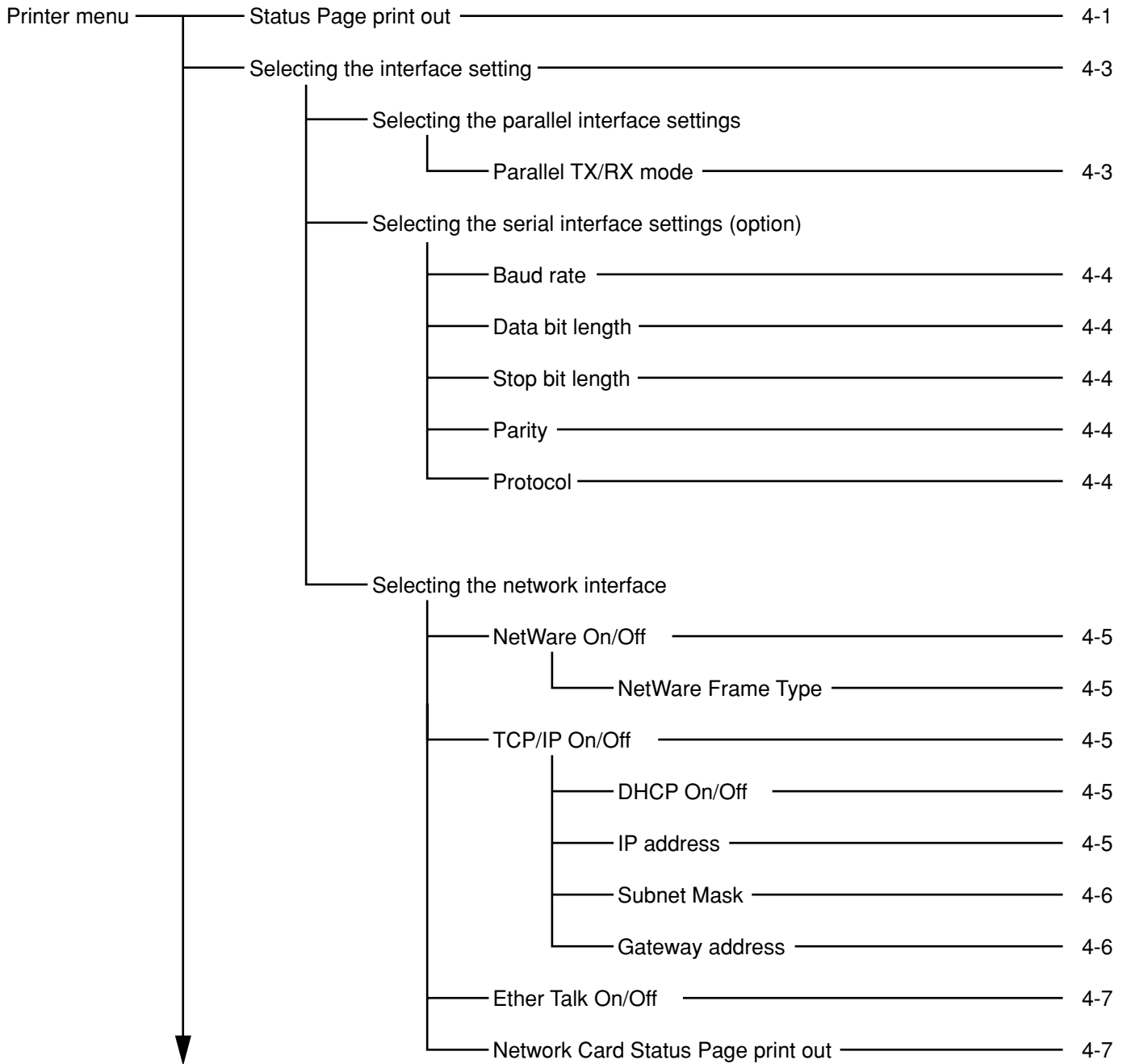


**4** Change the corresponding settings as desired. (Refer to "4. Selecting the Printer Settings" on page 4-1 for information regarding the various settings.)

**5** Press the Printer key to quit the printer mode.

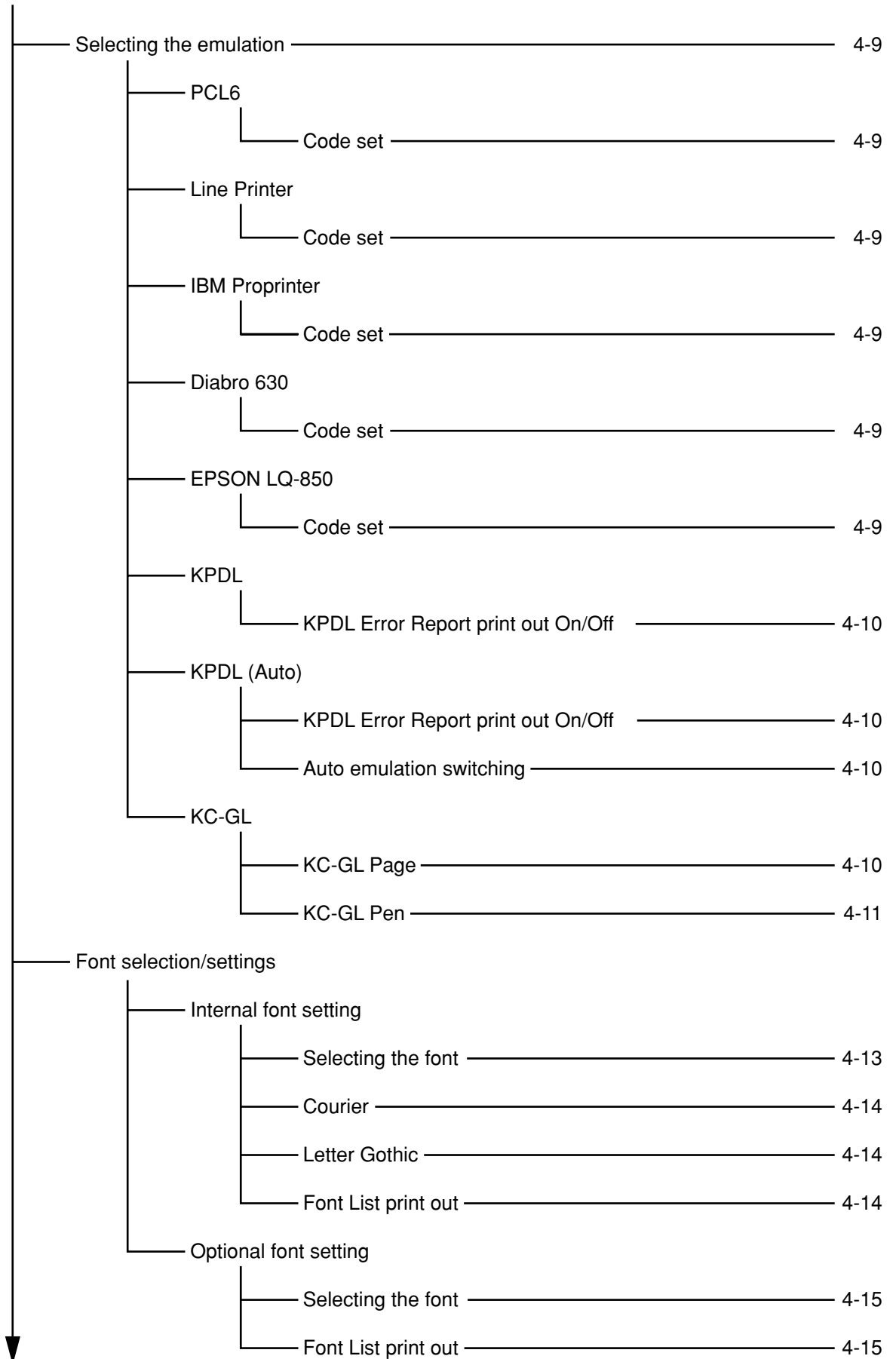
# 3. Menu Flow Chart

---



### 3. Menu Flow Chart

---





### 3. Menu Flow Chart

---

Page Settings	
Copiers (Number of copies)	4-17
Orientation (Printing orientation)	4-17
Zoom (Printing reduction)	4-18
Page Protect Mode	4-18
LE (Linefeed) action	4-19
CR (Carriage-Return) action	4-19
Wide A4 On/Off	4-19
Printing Quality settings	
KIR (Smoothing) Mode On/Off	4-21
Eco Print Mode On/Off	4-21
Resolution (Printing Resolution)	4-21
Print Density (Printing Density)	4-21
Paper settings	
Bypass Mode	4-23
Paper Feed Source	4-23
Duplex Mode	4-23
Stack Select	4-23
Override A4/LT (8 1/2 x 11) On/Off	4-23
RAM disk settings	
RAM disk On/Off	4-26
Writing data	4-26
Partition List print out	4-26
RAM disk size	4-26
Reading data	4-27
Reading program data	4-27
Deleting data	4-28
Deleting font data	4-28
Deleting program data	4-31
Deleting macro data	4-31

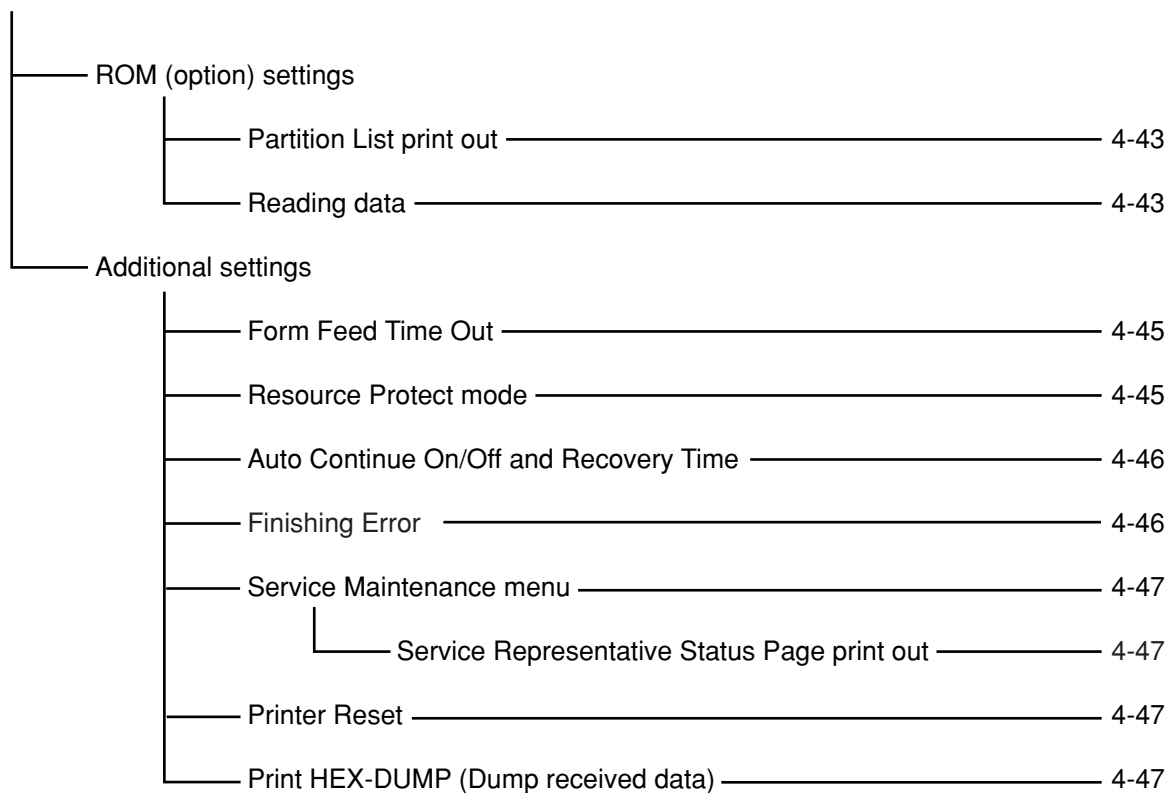
### 3. Menu Flow Chart

---

Hard disk settings	
Writing data	4-31
Partition List print out	4-31
Format hard disk	4-31
Reading data	4-32
Reading program data	4-32
Deleting data	4-33
Deleting font data	4-33
Deleting program data	4-34
Deleting macro data	4-34
Memory card settings	
Writing data	4-37
Partition List print out	4-37
Format memory card	4-37
Reading data	4-38
Reading font data	4-38
Reading program data	4-39
Reading macro data	4-39
Deleting data	4-40
Deleting font data	4-40
Deleting program data	4-41
Deleting macro data	4-41

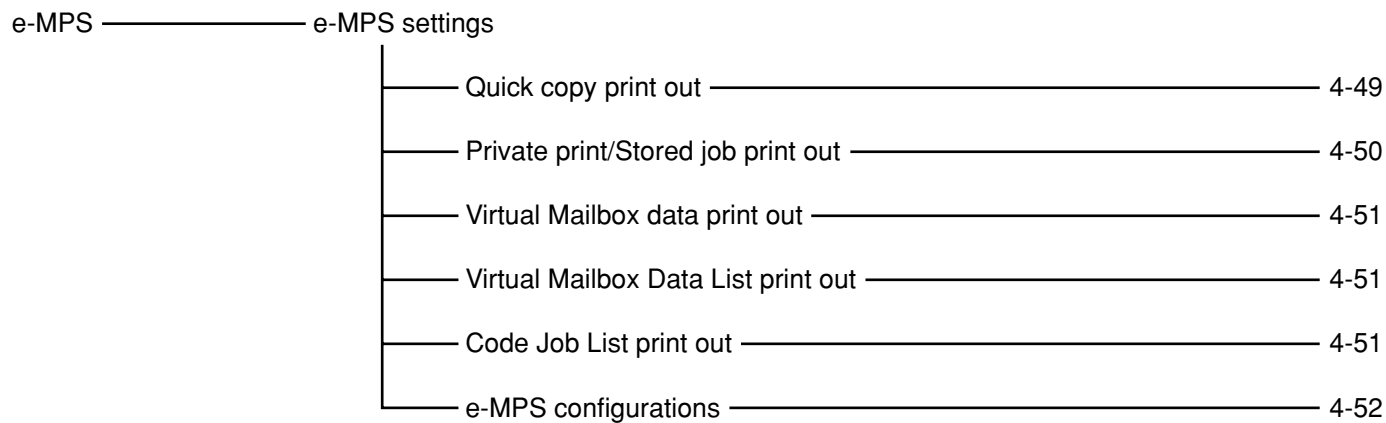
### 3. Menu Flow Chart

---



### 3. Menu Flow Chart

---



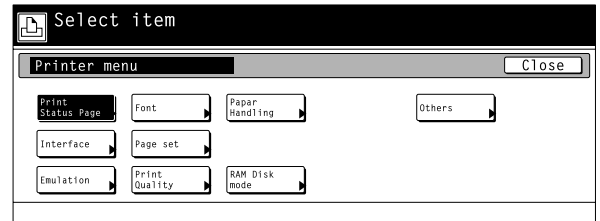
# 4. Selecting the Printer Settings

## 4-1 Status Page print out

Prints out a list of such items as the printer default settings, memory volume, etc.

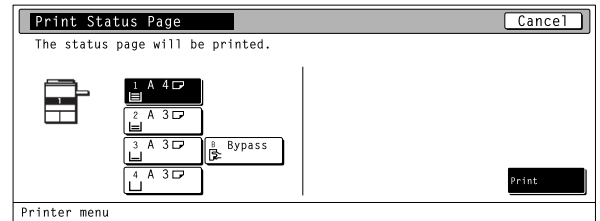
### ● Accessing the Status Page print out screen

Touch the "Print Status Page" key. The [Print Status Page] screen will appear.



### ① Status Page print out

Touch the "Print" key. The Status Page will be printed out.



## 4. Selecting the Printer Settings

### 4-2 Interface Settings

#### About the interface settings

It is possible to perform interface settings for the 17 items shown in the following chart.

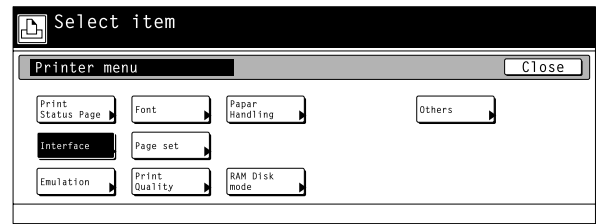
For the most efficient use of the printer functions, select the various settings according to your printing needs.

	Item	Available settings	Remarks
①	<b>Interface selection</b> Sets the interface that will be used for printing. The currently selected interface will be highlighted. The printer will automatically switch to the appropriate interface for printing.	Parallel, Network, USB, Serial, Option	Option is displayed only when the optional network card is installed. Serial is displayed only when the optional serial interface is installed.
②	<b>Parallel TX/RX mode</b> Sets the transmission and reception mode when the printer is connected to your computer with a parallel interface.	Auto, Normal, High Speed, Nibble (high)	
③	<b>Baud rate</b>	1200, 2400, 4800, 9600, 19200, 38400, 57600, 115200	Displayed only when the Serial interface is installed.
④	<b>Data bit length</b>	7, 8	Displayed only when the Serial interface is installed.
⑤	<b>Stop bit length</b>	1, 2	Displayed only when the Serial interface is installed.
⑥	<b>Parity</b>	None, Odd, Even, Ignore	Displayed only when the Serial interface is installed.
⑦	<b>Protocol</b>	DTR(positive)&XON/XOFF, DTR (positive), DTR (negative), XON/XOFF, ETX/ACK	Displayed only when the Serial interface is installed.
⑧	<b>NetWare On/Off</b>	Off, On	
⑨	<b>NetWare Frame Type</b> Sets the NetWare Frame type.	Auto, 802.3, Ethernet 2, 802.2, 802.3 SNAP	Displayed only when the NetWare setting is turned "On".
⑩	<b>TCP/IP On/Off</b>	Off, On	
⑪	<b>DHCP On/Off</b>	Off, On	
⑫	<b>IP address</b>	Enter the appropriate network address.	
⑬	<b>Subnet Mask</b>	Enter the appropriate network address.	
⑭	<b>Gateway address</b>	Enter the appropriate network address.	
⑮	<b>Ether Talk On/Of</b>	Off, On	
⑯	<b>Network Card Status Page print out</b> Prints out a Status page for the Network Card as well, when the standard Status Page (page 4-1) or that for use by your service representative (page 4-47) are printed out. A more detailed Status Page will be printed out together with the Service Representative Status Page print out.	Off, On	

## 4. Selecting the Printer Settings

### ● Accessing the Interface settings screen

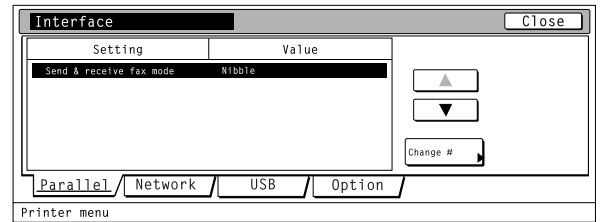
Touch the "Interface" key. The [Interface] screen will appear.



### ① Selecting the interface setting

Select the desired interface tab. Use the "▲" and "▼" cursor keys to select the desired item and then touch the "Change" key. The setting screen for the selected item will appear. the setting screen corresponding to the selected interface.

- To cancel the setting, touch the "Back" key.

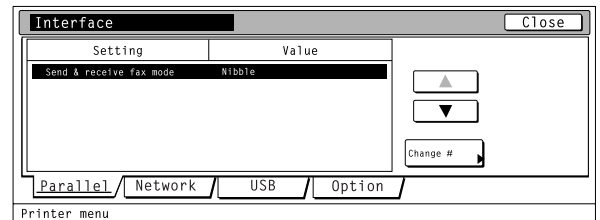


### ● Selecting the parallel interface settings

#### ② Parallel TX/RX mode

1

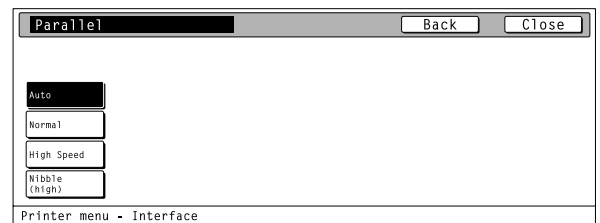
Select "Parallel" tab..



2

Select the desired TX/RX mode and then touch the "Close" key. The display will return to the [Printer Menu] screen.

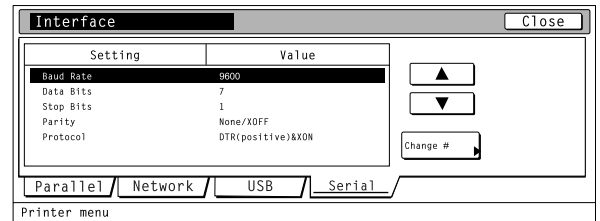
- To cancel the setting, touch the "Back" key.



## 4. Selecting the Printer Settings

### ● Selecting the serial interface settings

**1** Select "Serial" tab.



**2** Use the "▲" and "▼" cursor keys to select the desired item and then touch the "Change" key. The setting screen for the selected item will appear.

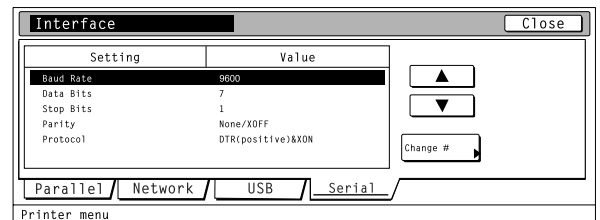
Baud rate: Sets the Baud Rate ③.

Data Bits: Sets the data bit length ④.

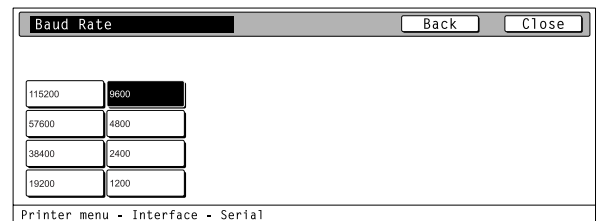
Stop Bits: Sets the stop bit length ⑤.

Parity: Sets the parity ⑥.

Protocol: Sets the protocol ⑦.

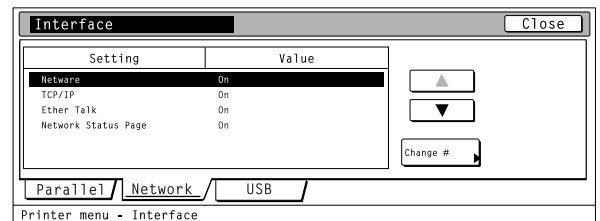


**3** Select the desired setting for each item and then touch the "Close" key. The display will return to the [Interface] screen.



### ● Selecting the network interface

**1** Select "Network" tab.



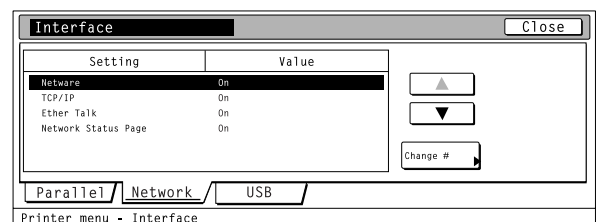
**2** Use the "▲" and "▼" cursor keys to select the desired item and then touch the "Change" key. The setting screen for the selected item will appear.

Network: Turns NetWare On/Off ⑧ and selects the NetWare Frame type ⑨.

TCP/IP: Turns TCP/IP On/Off ⑩, DHCP On/Off ⑪ and sets the IP address ⑫, Subnet Mask ⑬ and the Gateway address ⑭.

Ether talk: Selects the Ether Talk setting ⑮.

Option Status Page: Selects the setting for the Network Card Status Page print out ⑯.



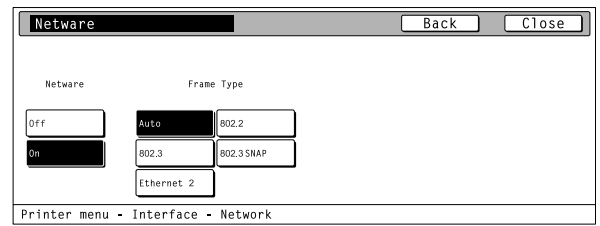


## 4. Selecting the Printer Settings

### 9 NetWare On/Off

Select "On" or "Off", as desired, under the "Netware" setting and then touch the "Close" key. The display will return to the [Network] screen.

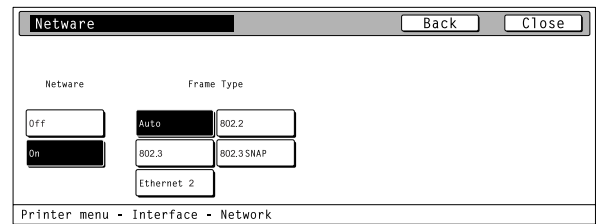
- When "On" is selected, the Frame Type settings will be displayed.
- To cancel the setting, touch the "Back" key.



### 10 NetWare Frame Type

Select the desired frame type under the "Frame Type" setting and then touch the "Close" key. The display will return to the [Network] screen.

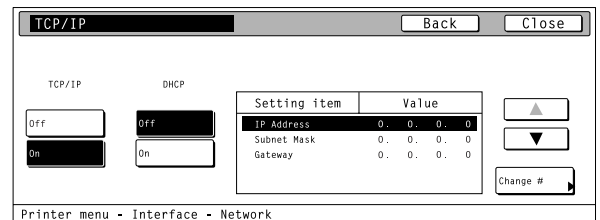
- To cancel the setting, touch the "Back" key.



### 11 TCP/IP On/Off

Select "On" or "Off", as desired, under the "TCP/IP" setting and then touch the "Close" key. The display will return to the [Network] screen.

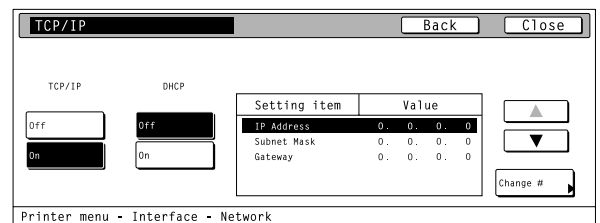
- When "On" is selected, the DHCP settings will be displayed.
- To cancel the setting, touch the "Back" key.



### 12 DHCP On/Off

Select "On" or "Off", as desired, under the "DHCP" setting and then touch the "Close" key. The display will return to the [Network] screen.

- To cancel the setting, touch the "Back" key.



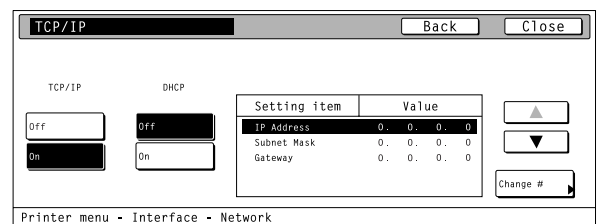
### 13 IP Address

1

Select "On" under the "TCP/IP" setting.

2

Use the "▲" and "▼" cursor keys to select "IP Address" and then touch the "Change" key. The [IP Address] screen will appear.



## 4. Selecting the Printer Settings

3

Use the numeric keys to input the first block of 3 digits of the address then press the sharp (#) key in order to input the following block of 3 digits.

- To change an entered address, press the sharp (#) key to select the 3-digit block that you want to change and use the numeric keys to enter the correct address.

IP Address      Back      Close

IP address can be set.(Mode can be set by #-key.)

0 . 0 . 0 . 0 (Enter with #-key)

Printer menu - Interface - Network - TCP/IP

4

Once the input of the IP address is completed, touch the “Close” key. The display will return to the [TCP/IP] screen.

- To cancel the setting, touch the “Back” key.

### 14 Subnet Mask

1

Select “ON” under the “TCP/IP” setting.

TCP/IP      DHCP

Off      Off

On      On

Setting item	Value
IP Address	10 . 181 . 123 . 12
Subnet Mask	0 . 0 . 0 . 0
Gateway	0 . 0 . 0 . 0

Change #

Printer menu - Interface - Network

2

Use the “▲” and “▼” cursor keys to select “Subnet Mask” and then touch the “Change” key. The [Subnet Mask] screen will appear.

3

Enter the Subnet Mask address by following the same procedure as for the IP Address.

### 15 Gateway address

1

Select “On” under the “TCP/IP” setting.

TCP/IP      DHCP

Off      Off

On      On

Setting item	Value
IP Address	10 . 181 . 123 . 12
Subnet Mask	255 . 255 . 255 . 0
Gateway	0 . 0 . 0 . 0

Change #

Printer menu - Interface - Network

2

Use the “▲” and “▼” cursor keys to select “Gateway” and then touch the “Change” key. The [Gateway] screen will appear.

3

Enter the Gateway address by following the same procedure as for the IP Address.

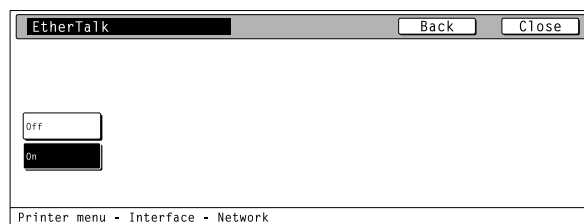
## 4. Selecting the Printer Settings

---

### 16 Ether Talk ON/OFF

Select "On" or "Off", as desired, and then touch the "Close" key. The display will return to the [Network] screen.

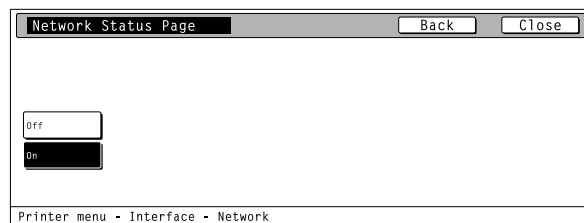
- To cancel the setting, touch the "Back" key.



### 17 Network Card Status Page print out

Select "On" or "Off", as desired, and then touch the "Close" key. The display will return to the [Network] screen.

- To cancel the setting, touch the "Back" key.



## 4. Selecting the Printer Settings

### 4-3 Emulation Protocol settings

#### About the emulation protocol settings

It is possible to perform emulation protocol settings for the 6 items shown in the following chart.

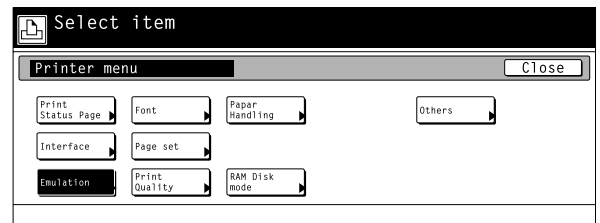
For the most efficient use of the printer functions, select the various settings according to your printing needs.

	Item	Available settings	Remarks
①	<b>Selecting the emulation</b> Sets the emulation protocol.	PCL6, Line Printer, IBM Proprinter, DIABRO 630, EPSON LQ-850, KPDL, KPDL (Auto), KC-GL	Allows you to set a different emulation protocol for each interface.
②	<b>KPDL Error Report print out On/Off</b> When the emulation protocol has been set to KPDL or KPDL (Auto), sets whether an Error Report will be automatically printed out whenever a KPDL error occurs.	Off, On	Select "On" to have an Error Report printed out and "Off" not to have any Error Report printed out.
③	<b>Auto emulation switching</b> Sets the back-up emulation mode when the emulation protocol has been set to KPDL (Auto).	PCL6, Line Printer, IBM Proprinter, DIABRO 630, EPSON LQ-850, KC-GL	
④	<b>KC-GL Page</b> Selects the paper format when the emulation protocol has been set to KC-GL.	A2, A1, A0, B3, B1, B2, B0, SPSZ	
⑤	<b>KC-GL Pen</b> Selects the type and width of the pen when the emulation protocol has been set to KC-GL.	01 – 99	

## 4. Selecting the Printer Settings

### ● Accessing the Emulation setting screen

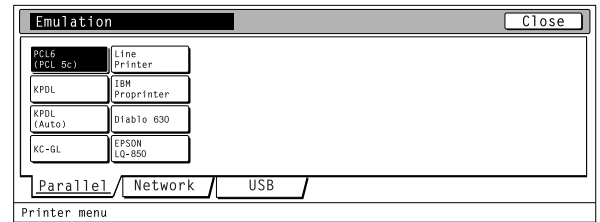
Touch the "Emulation" key. The [Emulation] screen will appear.



### ① Selecting the emulation

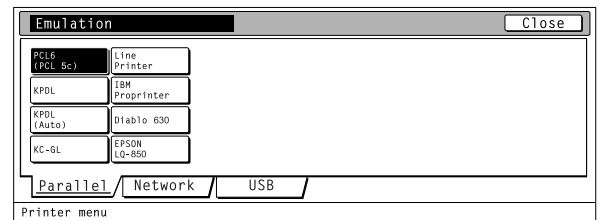
1

Select the interface tab for which you want to set the emulation protocol.



2

Select the desired emulation and then touch the "Close" key. The display will return to the [Printer Menu] screen.

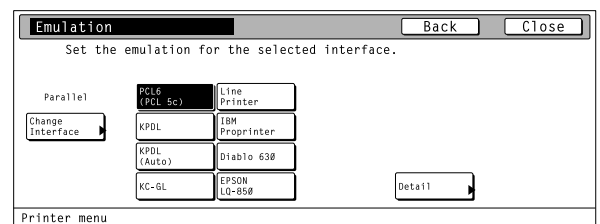


### ② Code set

1

Select one of the following emulation protocols and then touch the "Detail" key. The selecting screen for the code set will appear.

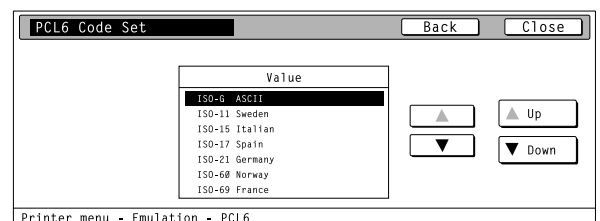
PCL6, Line Printer, IBM Proprinter, DIABLO 630, EPSON LQ-850



2

Use the "▲" and "▼" cursor keys to select the desired code set for that emulation protocol.

- Use the "Up" and "Down" keys to scroll up and down in the display.



3

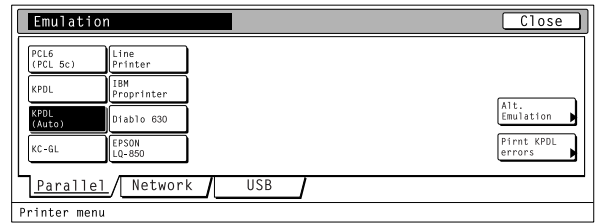
Touch the "Close" key. The display will return to the [Emulation] screen.

- To cancel the setting, touch the "Back" key.

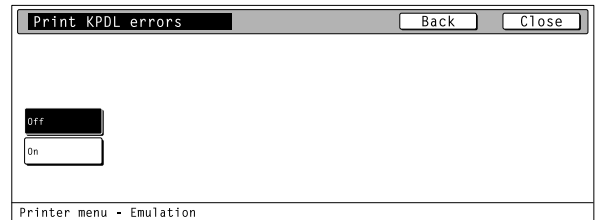
## 4. Selecting the Printer Settings

### ② KPD L Error Report print out On/Off

- 1 Select one of the following emulation protocols and then touch the "Print KPD L errors" key. The [Print KPD L errors] screen will appear.  
KPD L, KPD L (Auto)



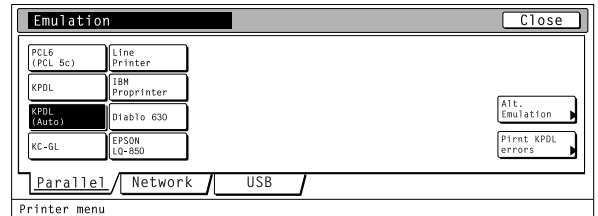
- 2 Select "On" or "Off", as desired, under the KPD L error setting and then touch the "Close" key. The display will return to the [Emulation] screen.
  - To cancel the setting, touch the "Back" key.



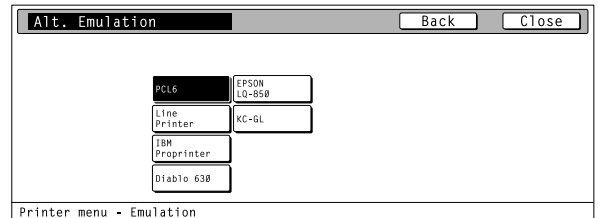
### ③ Auto emulation switching

The back-up emulation mode can be selected only when the emulation protocol has been set to KPD L (Auto).

- 1 Touch the "Alt. Emulation" key. The [Alt. Emulation] screen will appear.

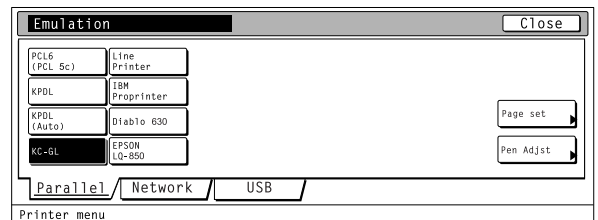


- 2 Select "On" or "Off", as desired, under the KPD L error setting and then touch the "Close" key. The display will return to the [Emulation] screen.
  - To cancel the setting, touch the "Back" key.

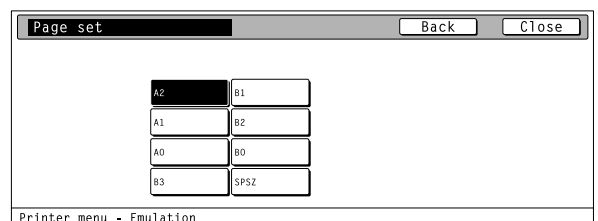


### ④ KC-GL Page

- 1 Select "KC-GL" as the emulation protocol and then touch the "Page set" key. The [Page set] screen will appear.



- 2 Select the desired paper format and then touch the "Close" key. The display will return to the [Emulation] screen.
  - To cancel the setting, touch the "Back" key.

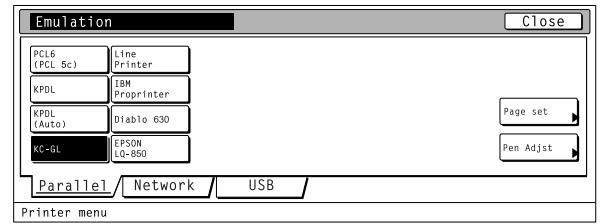


## 4. Selecting the Printer Settings

### ⑤ KC-GL Pen

1

Select "KC-GL" as the emulation protocol and then touch the "Pen Adjust" key. The [Pen Adjust] screen will appear.

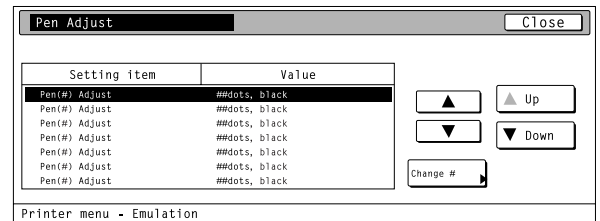


2

Use the "▲" and "▼" cursor keys to select the desired setting item and then touch the "Change" key.

The [Pen (#) Adjust] screen will appear.

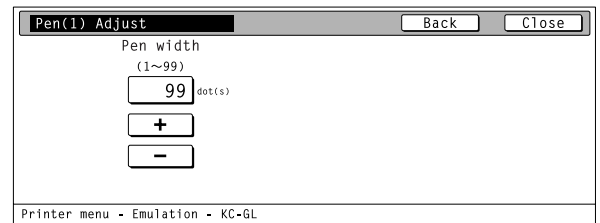
• Use the "Up" and "Down" keys to scroll up and down in the display.



3

Use the "+" and/or "-" key or the numeric keys to enter the desired width under the "Pen width" setting. Then touch the "Close" key. The display will return to the [Pen Adjust] screen.

• To cancel the setting, touch the "Back" key.



## 4. Selecting the Printer Settings

### 4-4 Font selection/settings

#### About the font selection/settings

It is possible to perform font selection/settings for the 4 items shown in the following chart.  
For the most efficient use of the printer functions, select the various settings according to your printing needs.

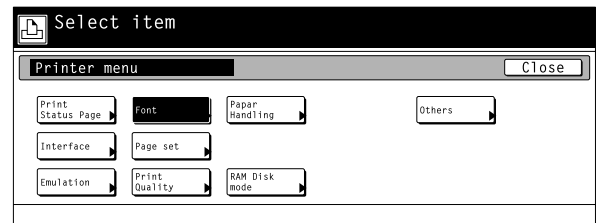
	Item	Available settings	Remarks
①	<p><b>Selecting the font</b> Selects the font that will be used for printing. This setting is made by entering the ID of the desired font. To select a font that is already installed in the printer, enter "I###" (with the desired font ID entered in place of ###). To verify font IDs, print out a Font List by following the procedure in "(18) Font List print out". It is possible to select a font other than those already installed, such as those contained in the optional Memory Card. Optional font IDs such as "S###", etc., start with different letters according to the type of the font as shown below. S: Software font (download) M: Memory card font H: Hardware font H: RAM disk font O: Optional ROM font</p>		The font can be set separately for each interface. To select an installed font, select "Internal". To select a font other than those already installed, select "Option" and set the desired font.
②	<p><b>Sets the character size and character pitch</b> Selects the code set that will be used under each font.</p>	<p>Size : 4.00 ~ 999.75 points Pitch : 0.44 ~ 99.99 cpi</p>	Either the character size or character pitch is displayed according to the font IDs.
③	<p><b>Courier</b> Allows you to select between "Regular" and "Dark (bold)".</p>	<p>Regular Dark</p>	Displayed only when the "Internal" is selected.
④	<p><b>Letter Gothic</b> Allows you to select between "Regular" and "Dark (bold)".</p>	<p>Regular Dark</p>	Displayed only when the "Internal" is selected.
⑤	<p><b>Code set</b> Selects the code set that will be used under each font.</p>	The code sets that are available for selection will differ depending upon the font.	
⑥	<p><b>Font List print out</b></p>		



## 4. Selecting the Printer Settings

### ● Accessing the Font setting screen

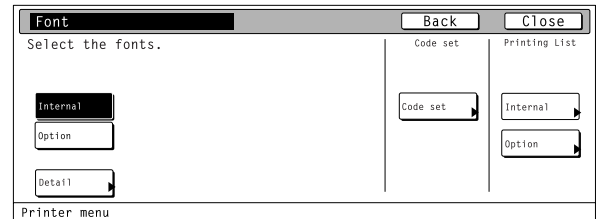
Touch the “Font” key. The [Font] screen will appear.



### ● Font setting

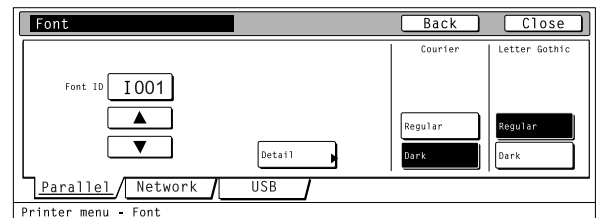
**1** Touch the “Internal” or “option” Key and then touch the “detail” key.

- The “Option” key is displayed only when there are optional fonts available, such as those contained in the optional Memory Card.



**2** Select the desired interface tab and then touch the “Close” key. The display will return to the [Font] screen.

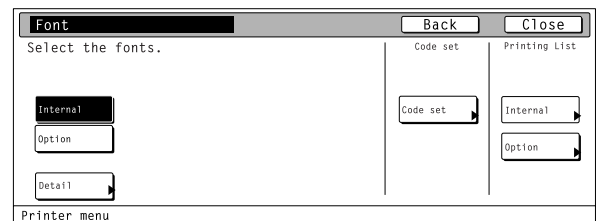
- To cancel the setting, touch the “Back” key.



### ① Selecting the font

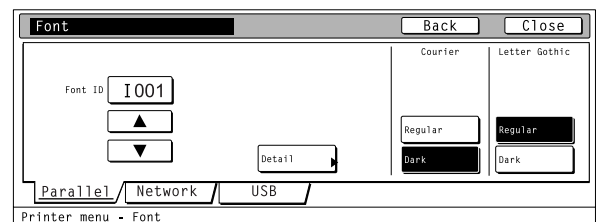
**1** Touch the “Internal” or “option” Key and then touch the “detail” key.

- The “Option” key is displayed only when there are optional fonts available, such as those contained in the optional Memory Card.



**2** Use the “▲” and “▼” cursor keys to select the ID that corresponds to the desired font and then touch the “Close” key. The display will return to the [Font] screen.

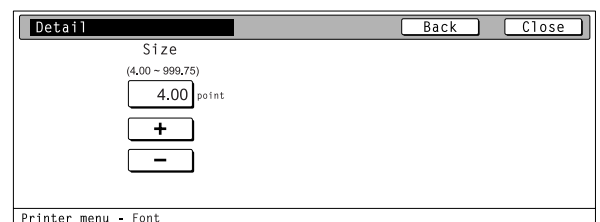
- To cancel the setting, touch the “Back” key.
- The character size or character pitch can be set if you press the “Detail”.



### ② Sets the character size and character pitch

**2** Use the “+” and/or “-” key or the numeric keys to enter the desired character size or character pitch and Then touch the “Close” key. The display will return to the [Font] screen.

- To cancel the setting, touch the “Back” key.
- The character size or character pitch is displayed according to the selected font IDs.
- The illustration shown at the right side is the size setting screen.

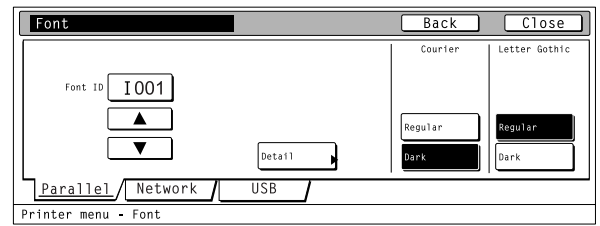


## 4. Selecting the Printer Settings

### ③ Courier

Select "Regular" or "Dark (bold)", as desired, under the "Courier" setting and then touch the "Close" key. The display will return to the [Printer Menu] screen.

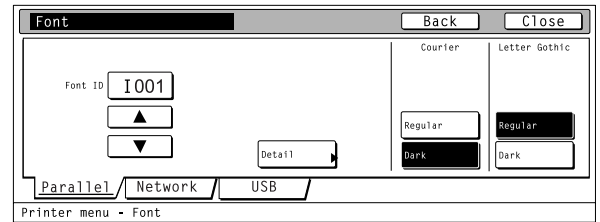
- To cancel the setting, touch the "Back" key.



### ④ Letter Gothic

Select "Regular" or "Dark (bold)", as desired, under the "Letter Gothic" setting and then touch the "Close" key. The display will return to the [Printer Menu] screen.

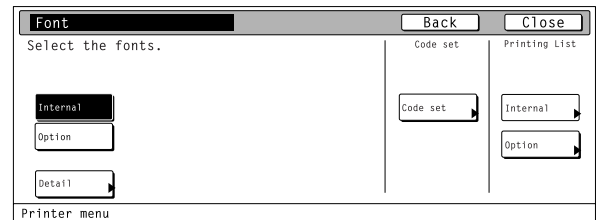
- To cancel the setting, touch the "Back" key.



### ⑤ Code set

1

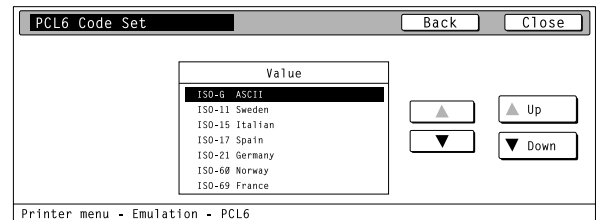
Touch the "Code set" key under the "Code set" key. To cancel the setting, touch the "Back" key.



2

Select the desired interface tab and then use the "▲" and "▼" cursor keys to select the desired code set for that font. Touch the "Close" key. The display will return to the [Font] screen.

- Use the "Up" and "Down" keys to scroll up and down in the display.
- To cancel the setting, touch the "Back" key.



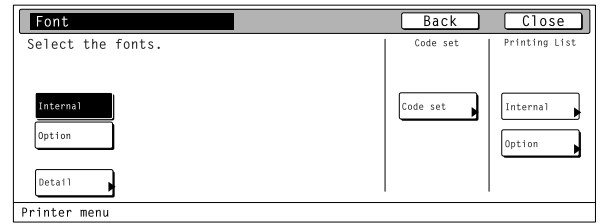
## 4. Selecting the Printer Settings

### ⑥ Font List print out

1

Touch the "Internal" or "option" key under "Printing List" setting. The display will return to the [List of font] screen.

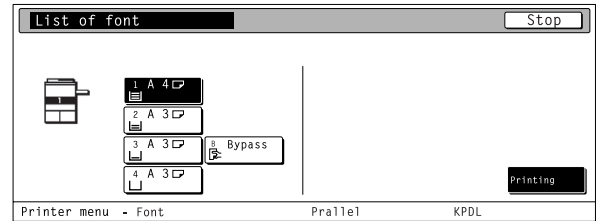
- To cancel the setting, touch the "Back" key.
- The "Option" key is displayed only when there are optional fonts available, such as those contained in the optional Memory Card.



2

Touch the "Printing" key. The List of font will be printed out.

- To cancel the printing, touch the "Stop" key.



## 4. Selecting the Printer Settings

### 4-5 Page Settings

#### About the page settings

It is possible to perform page settings for the 6 items shown in the following chart.

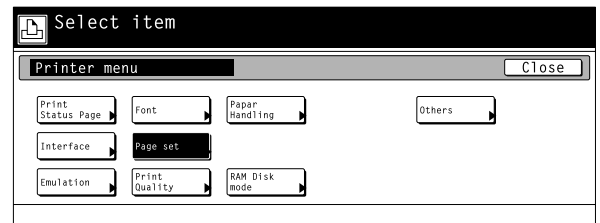
For the most efficient use of the printer functions, select the various settings according to your printing needs.

	Item	Available settings	Remarks
①	<b>Copiers (Number of copies)</b>	001 – 999	
②	<b>(Orientation) Printing orientation</b>	Portrait, Landscape	Allows you to set a different printing orientation for each interface.
③	<b>Zoom (Printing reduction)</b> Originals can be reduced with a fixed ratio and printed out at a selected printing size by selecting the paper size (original size) and the printing size. Paper size: Cassette, 11 x 17, 8 1/2 x 14, 8 1/2 x 11, 5 1/2 x 8 1/2, A3, A4, A5, B4, B5, Folio, 8 1/2 x 13, Stock Form.	Only the printing sizes that can be used with the selected paper size are displayed.	If Stock Form is set as the paper size, a ratio will change by selecting a different printing orientation. Allow you to select a ration of 98% reduction as printing size. If the setting of "A4 → 8 1/2 x 11 or 8 1/2 x 11 → A4" is selected, the original will be reduced with 94% ratio.
④	<b>Page Protect Mode</b> If "Auto" is selected here, the machine will monitor the data to avoid any Print Overrun Error and, if necessary, automatically turn Page Protect "On". If a Print Overrun Error does happen to occur even then, the machine will automatically change the Page protect setting to "On".	Auto, On	
⑤	<b>LF (Linefeed) action</b>	LF only, CR and LF, Ignore LF	Allows you to set a different linefeed handling for each interface.
⑥	<b>CR (Carriage-Return action)</b>	CR only, CR and LF, Ignore CR	Allows you to set a different carriage return handling for each interface.
⑦	<b>Wide A4 On/Off</b> Increases the printing area on A4 size paper.	Off, On	

## 4. Selecting the Printer Settings

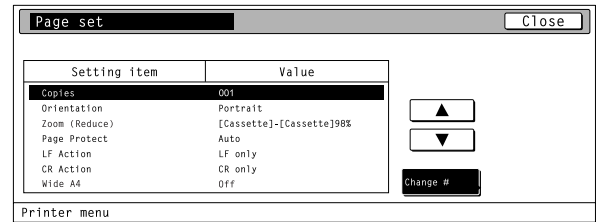
### ● Accessing the Page Settings screen

Touch the “Page set” key. The [Page set] screen will appear.



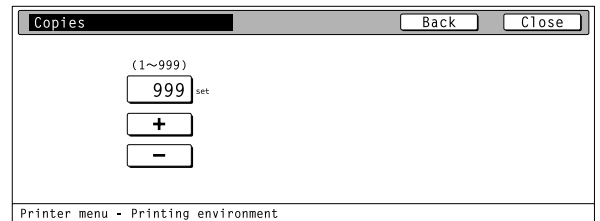
### ① Copiers (Number of copies)

**1** Use the “▲” and “▼” cursor keys to select “Copies” and then touch the “Change” key. The [Copies] screen will appear.



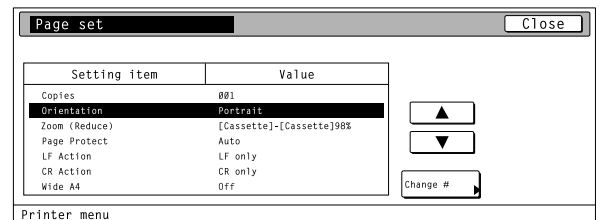
**2** Use the “+” and/or “-” key or the numeric keys to enter the desired number of copies to be made and then touch the “Close” key. The display will return to the [Page set] screen.

- To cancel the setting, touch the “Back” key.

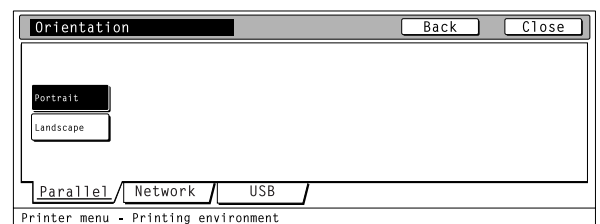


### ② Orientation (Printing orientation)

**1** Use the “▲” and “▼” cursor keys to select “Orientation” and then touch the “Change” key. The [Orientation] screen will appear.

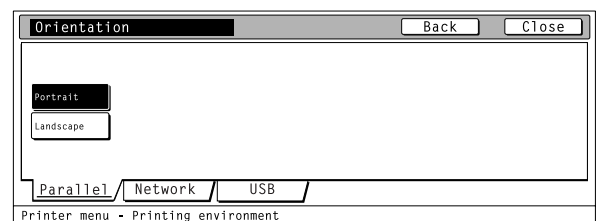


**2** Select the desired interface tab.



**3** Select the desired printing orientation and then touch the “Close” key. The display will return to the [Page set] screen.

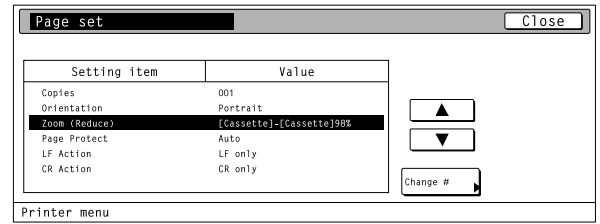
- To cancel the setting, touch the “Back” key.



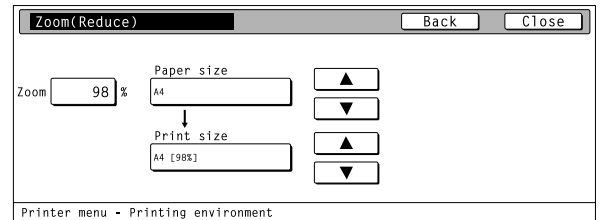
## 4. Selecting the Printer Settings

### ③ Zoom (Printing reduction)

**1** Use the “▲” and “▼” cursor keys to select “Zoom” and then touch the “Change” key. The [Zoom (Reduce)] screen will appear.



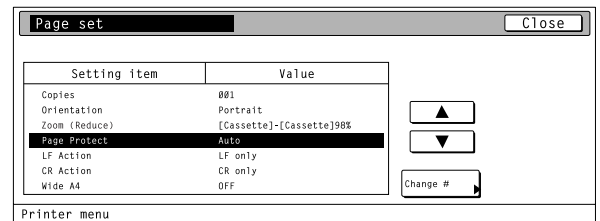
**2** Use the “▲” and “▼” cursor keys to select the desired paper size and the printing size. The reduction ratio will automatically be set and displayed.



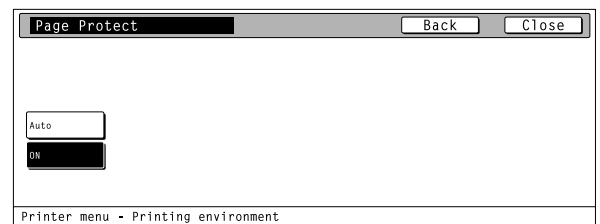
**3** Touch the “Close” key. The display will return to the [Page set] screen.  
• To cancel the setting, touch the “Back” key.

### ④ Page Protect mode

**1** Use the “▲” and “▼” cursor keys to select “Page Protect” and then touch the “Change” key. The [Page Protect] screen will appear.



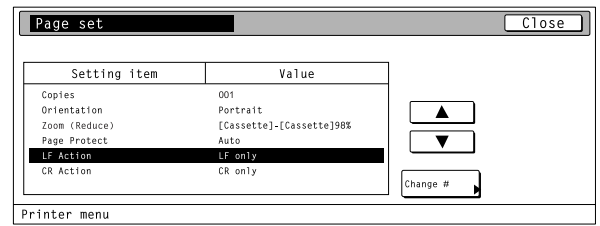
**2** Select “Auto” or “On”, as desired, and then touch the “Close” key. The display will return to the [Page set] screen.  
• To cancel the setting, touch the “Back” key.



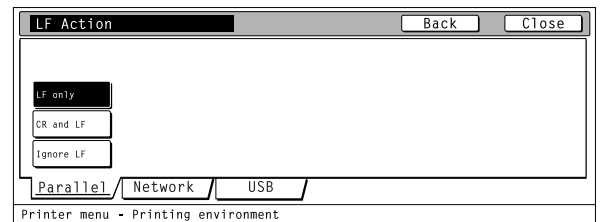
## 4. Selecting the Printer Settings

### ⑤ Linefeed (LF) action

**1** Use the “▲” and “▼” cursor keys to select “LF Action” and then touch the “Change” key. The [LF Action] screen will appear.

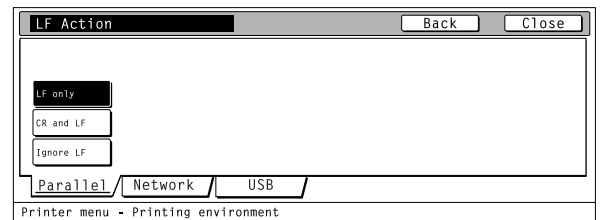


**2** Select the desired interfacetab.



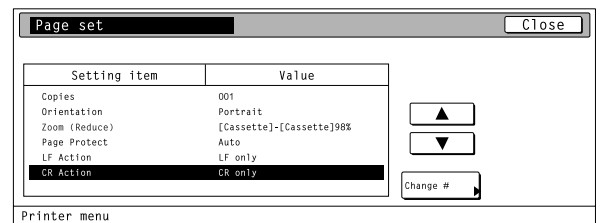
**3** Select the desired interface and then touch the “Close” key. The display will return to the [Print menu] screen.

- To cancel the setting, touch the “Back” key.

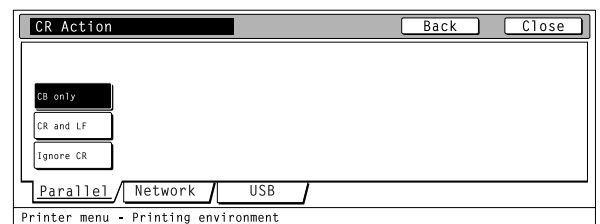


### ⑥ Carriage-Return (CR) action

**1** Use the “▲” and “▼” cursor keys to select “CR Action” and then touch the “Change” key. The [CR Action] screen will appear.

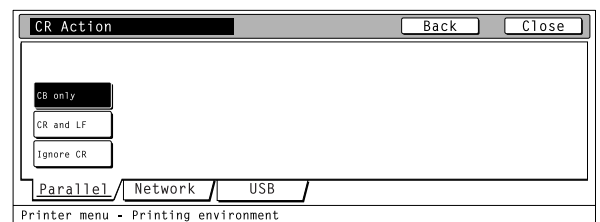


**2** Select the desired interfacetab.



**3** Select the desired carriage-return action and then touch the “Close” key. The display will return to the [Printer menu] screen.

- To cancel the setting, touch the “Back” key.



## 4. Selecting the Printer Settings

---

### 4-6 Printing Quality settings

#### About the printing quality settings

It is possible to perform printing quality settings for the 4 items shown in the following chart.

For the most efficient use of the printer functions, select the various settings according to your printing needs.

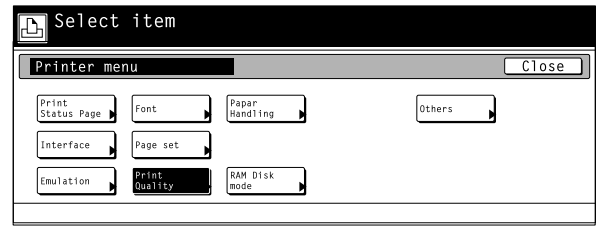
	Item	Available settings	Remarks
①	<b>KIR (Smoothing) Mode On/Off</b> Allows a printing resolution of an interpolated 2400 dpi x 600 dpi through a smoothing process.	Off, On	
②	<b>Eco Print Mode On/OFF</b> Allows printing in a toner-saving mode. Use this mode for test pages, etc., when high printing quality is not required.	Off, On	
③	<b>Resolution (Printing Resolution)</b>	Fast 1200 mode, 300 dpi, 600 dpi	
④	<b>Print Density (Printing Density)</b>	1 – 5	Allows you to set a darker printing density by selecting 5 and a lighter printing density by selecting 1.



## 4. Selecting the Printer Settings

### ● Accessing the Printing Quality settings screen

**1** Touch the “Print Quality” key. The [Print Quality] screen will appear.



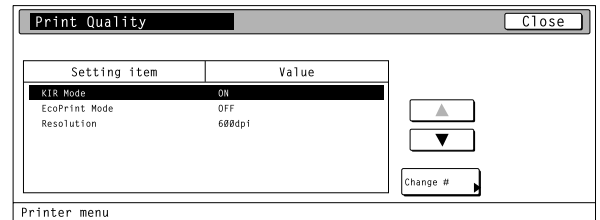
**2** Use the “▲” and “▼” cursor keys to select the desired item and then touch the “Change” key. The setting screen for the selected item will appear.

KIR Mode: KIR (Smoothing) Mode On/Off ①.

Eco Print Mode: EcoPrint mode On/Off ②.

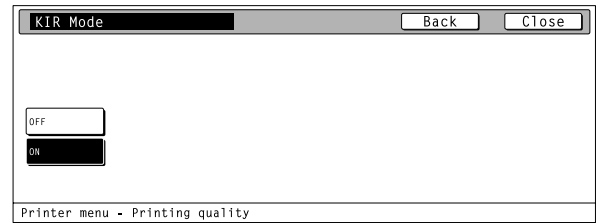
Resolution: Printing Resolution ③.

Print Density: Printing Density ④.



**3** Select the desired setting for each item and then touch the “Close” key. The display will return to the [Print Quality] screen.

- To cancel the setting, touch the “Back” key.



## 4. Selecting the Printer Settings

### 4-7 Paper settings

#### About the paper settings

It is possible to perform paper settings for the 5 items shown in the following chart.

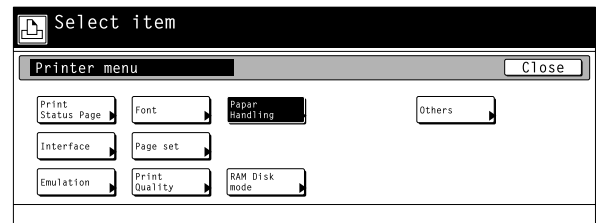
For the most efficient use of the printer functions, select the various settings according to your printing needs.

	Item	Available settings	Remarks
①	<b>Bypass mode</b> If "First" is selected here and there is paper set in the bypass table, paper feed will be accomplished from the bypass table.	Cassette, First	
②	<b>Paper Feed Source</b> Selects the paper cassette that will be selected first.	Bypass Cassette1 Cassette2 Cassette3 Cassette4	Cassette 3 and Cassette 4 are displayed only when the option Cassette are installed. "Cassette 1" Will not be displayed only in Duplex Copiers.
③	<b>Duplex mode</b>	None, Short edge bind, Long edge bind	Displayed only in Duplex Copiers.
④	<b>Stack select</b> Selects where the printing paper will be ejected.	Face-down (Inner tray), Face-Up (Side tray) Main tray, (Face-Up, Face-down) Sub tray, (Face-Up, Face-down) Job separator, Mailbox (Face-Up), Mailbox (Face-Down)	"Main tray, (Face-Up, Face-down) and Sub tray, (Face-Up, Face-down)" is displayed only when the optional Finisher is installed. "Face-Up (Side tray)" Will not be displayed if the optional Finisher is installed.
⑤	<b>Override A4/LT(8 1/2 x 11) On/Off</b> Allows both A4 and Letter (8 1/2 x 11) size paper to be utilized as though they were the same size.	Off On	

## 4. Selecting the Printer Settings

### ● Accessing the Paper settings screen

**1** Touch the “Paper Handling” key. The [Paper Handling] screen will appear.



**2** Use the “▲” and “▼” cursor keys to select the desired item and then touch the “Change” key. The setting screen for the selected item will appear.

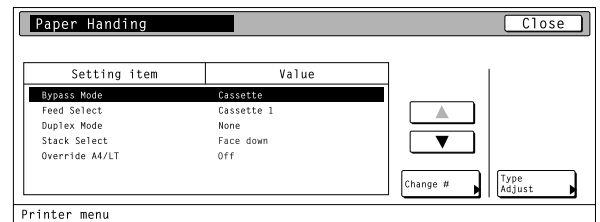
Bypass Mode: Bypass mode ①.

Feed Select: Paper Feed Source ②.

Duplex Mode: Duplex mode ③.

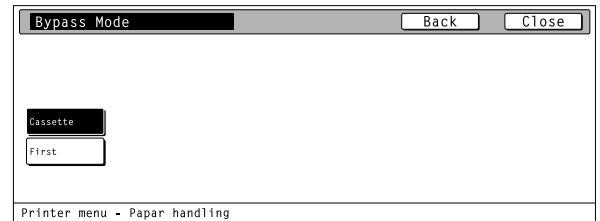
Stack Select: Stack select ④.

Override A4/LT: Turns A4/Letter (8 1/2 x 11) usage On/Off ⑤.



**3** Select the desired setting for each item and then touch the “Close” key. The display will return to the [Paper Handling] screen.

- To cancel the setting, touch the “Back” key.



## 4. Selecting the Printer Settings

### 4-8 RAM disk settings

#### RAM Disk

In this machine, it is possible to create a RAM Disk, or a portion of memory that is used as a virtual disk. By creating a RAM Disk of a desired size from among the total memory in the printer, it is possible to perform electronic sorting (which shortens the overall time required for printing) as well as to save data to and retrieve data from that disk very quickly.

The RAM disk function is not available when the optional hard disk is installed.

[Proof and Hold] and [Stored job print out] of the e-MPS function (P4-48) are available.

#### IMPORTANT!

The RAM Disk is created from that portion of the printer's memory that is normally available to the user. Thus, if the size of the RAM disk created is too large, printing speed may actually be decreased or the machine may run out of available memory.

WARNING: Resetting the printer or turning the main switch OFF will erase all data written to the RAM Disk.

The factory default setting for the RAM Disk is "Off". In order to create a RAM Disk, make the necessary settings as shown below.

#### About the RAM disk settings

It is possible to perform RAM disk settings for the 10 items shown in the following chart.

For the most efficient use of the printer functions, select the various settings according to your printing needs.

	Item	Available settings	Remarks
①	<b>RAM disk On/Off</b>	On, Off	This setting must be turned On in order to sort print sets using the collating function.
②	<b>Writing data</b> If "Write Data" is selected here, the machine will enter a "waiting for data" state until data is sent from the host computer.	Write Data	Displayed only when "On" is selected under the "① RAM disk On/Off" setting.
③	<b>Partition List print out</b>	List of Partitions	Displayed only when "On" is selected under the "① RAM disk On/Off" setting.
④	<b>RAM disk size</b> Sets the amount of memory that will be used as a RAM disk. The maximum size that can be selected is the total amount of memory installed minus the amount used by the system (36 MB).	01 – 99 MBytes	Displayed only when "On" is selected under the "① RAM disk On/Off" setting.
⑤	<b>Reading data</b> Reads the selected data from the RAM disk.	Select from among the data partition names that are displayed.	<ul style="list-style-type: none"> <li>• Displayed only when there is appropriate data in the RAM disk.</li> <li>• Displayed only when "On" is selected under the "① RAM disk On/Off" setting.</li> </ul>
⑥	<b>Reading program data</b> Reads the selected program data from the RAM disk.	Select from among the program partition names that are displayed.	<ul style="list-style-type: none"> <li>• Displayed only when there is appropriate program data in the RAM disk.</li> <li>• Displayed only when "On" is selected under the "① RAM disk On/Off" setting.</li> </ul>
⑦	<b>Deleting data</b> Deletes the selected data from the RAM disk.	Select from among the data partition names that are displayed.	<ul style="list-style-type: none"> <li>• Displayed only when there is appropriate data in the RAM disk.</li> <li>• Displayed only when "On" is selected under the "① RAM disk On/Off" setting.</li> </ul>
⑧	<b>Deleting font data</b> Deletes the selected font data from the RAM disk.	Select from among the fonts that are displayed.	<ul style="list-style-type: none"> <li>• Displayed only when there is appropriate font data in the RAM disk.</li> <li>• Displayed only when "On" is selected under the "① RAM disk On/Off" setting.</li> </ul>

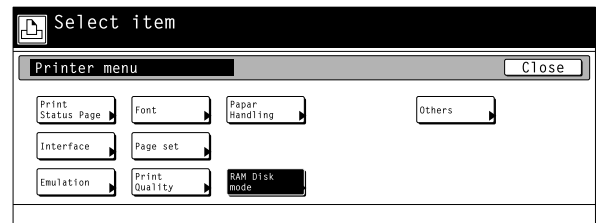
## 4. Selecting the Printer Settings

	Item	Available settings	Remarks
⑨	<b>Deleting program data</b> Deletes the selected program data from the RAM disk.	Select from among the program partition names that are displayed.	<ul style="list-style-type: none"><li>• Displayed only when there is appropriate program data in the RAM disk.</li><li>• Displayed only when "On" is selected under the "RAM disk On/Off" setting.</li></ul>
⑩	<b>Deleting macro data</b> Deletes the selected macro data from the RAM disk.	Select among the macro partition names that are displayed.	<ul style="list-style-type: none"><li>• Displayed only when there is appropriate macro data in the RAM disk.</li><li>• Displayed only when "On" is selected under the "RAM disk On/Off" setting.</li></ul>

## 4. Selecting the Printer Settings

### ● Accessing the RAM disk settings screen

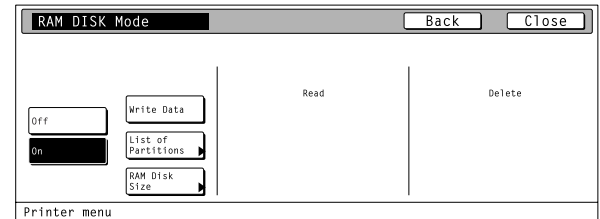
Touch the “RAM Disk mode” key. The [RAM DISK Mode] screen will appear.



### ① RAM disk ON/OFF

Touch the “On” key. The various settings for the RAM disk will now be possible.

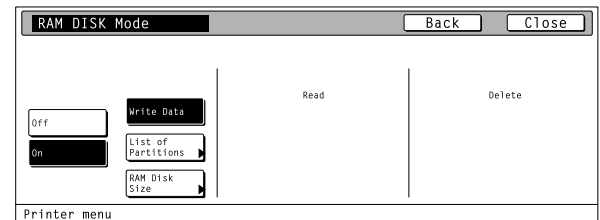
- If you select “Off” here, RAM settings will not be possible.



### ② Writing data

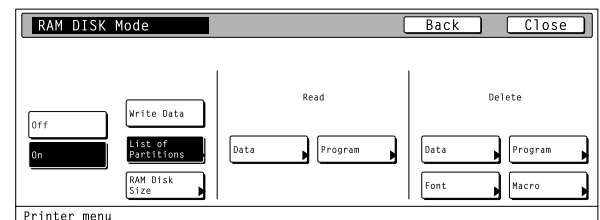
Touch the “Write Data” key. The display will return to the basic printer screen and the machine will enter a “waiting for data” state.

- When data is received from a computer, “Processing” will be displayed in the [Printer Menu] screen. Once the operation is completed, “Waiting” will be displayed.



### ③ Partition List print out

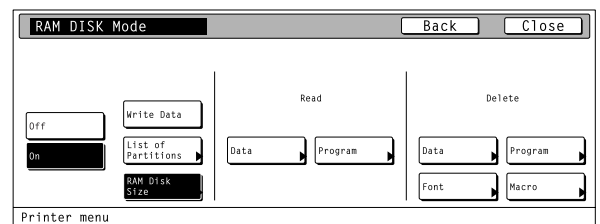
Touch the “List of Partitions” key. A Partition List will be printed out.



### ④ RAM disk size

Touch the “RAM DISK Size” key.

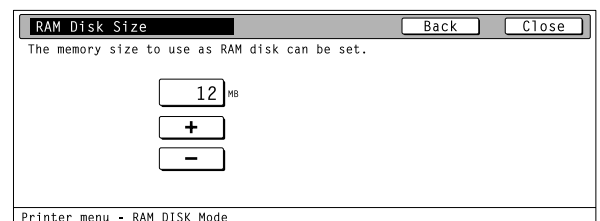
1



2

Use the “+” and/or “-” key to select the desired size of the RAM disk.

- To cancel the setting, touch the “Back” key.



## 4. Selecting the Printer Settings

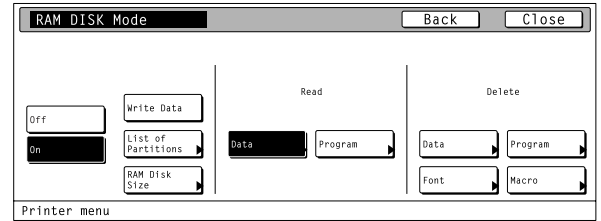
3

Once you have completed the setting, touch the "Close" key. The display will return to the [RAM DISK Mode] screen.

### ⑤ Reading data

1

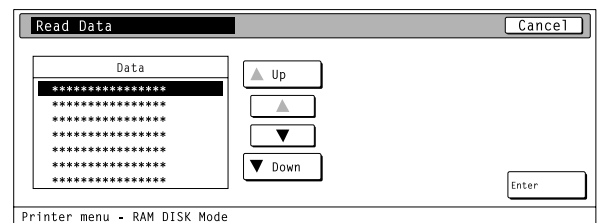
Touch the "Data" key under the "Read" setting.



2

Use the "▲" and "▼" cursor keys to select the data that you want to be read.

- If you want to return to the [RAM DISK Mode] screen, touch the "Cancel" key.



3

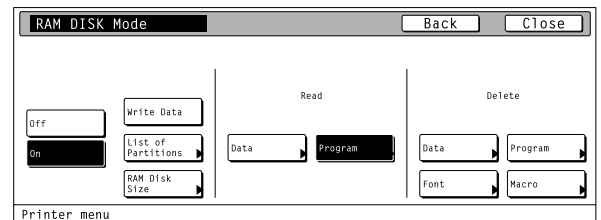
Touch the "Enter" key. The display will return to the basic printer screen and the data will be read.

- "Processing" will be displayed in the basic printer screen while the data is being read.

### ⑥ Reading program data

1

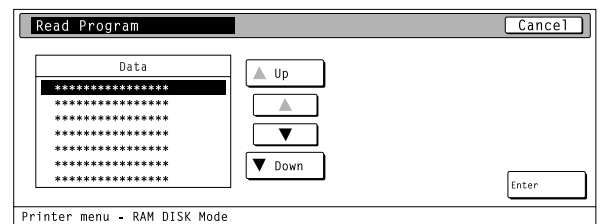
Touch the "Program" key under the "Read" setting.



2

Use the "▲" and "▼" cursor keys to select the program data that you want to be read.

- If you want to return to the [RAM DISK Mode] screen, touch the "Cancel" key.



3

Touch the "Enter" key. The display will return to the basic printer screen and the program data will be read.

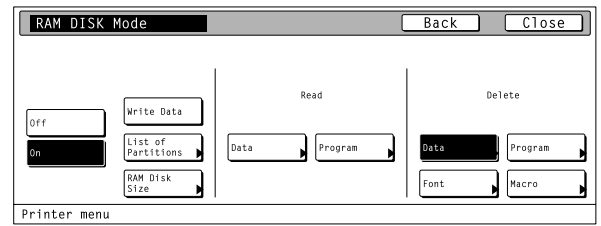
- "Processing" will be displayed in the basic printer screen while the program data is being read.

## 4. Selecting the Printer Settings

### ⑦ Deleting data

1

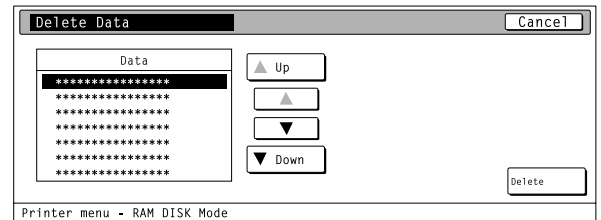
Touch the “Data” key under the “Delete” setting.



2

Use the “▲” and “▼” cursor keys to select the data that you want to delete.

- If you want to return to the [RAM DISK Mode] screen, touch the “Cancel” key.



3

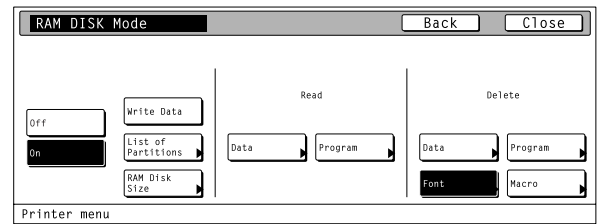
Touch the “Delete” key. The display will return to the basic printer screen and the data will be deleted.

- “Processing” will be displayed in the basic printer screen while the data is being deleted.

### ⑧ Deleting font data

1

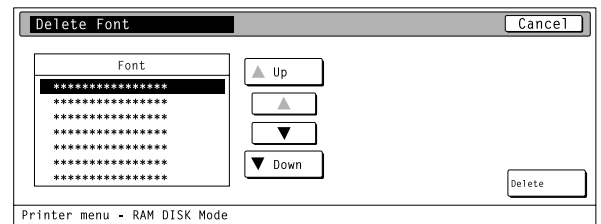
Touch the “Font” key under the “Delete” setting.



2

Use the “▲” and “▼” cursor keys to select the font data that you want to delete.

- If you want to return to the [RAM DISK Mode] screen, touch the “Cancel” key.



3

Touch the “Delete” key. The display will return to the basic printer screen and the font data will be deleted.

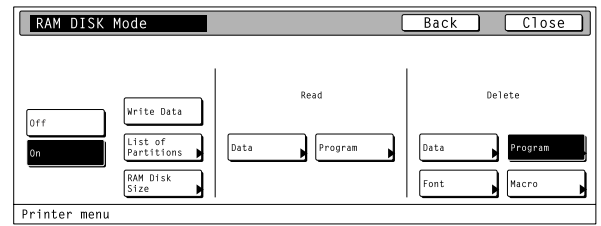
- “Processing” will be displayed in the basic printer screen while the font data is being deleted.



## 4. Selecting the Printer Settings

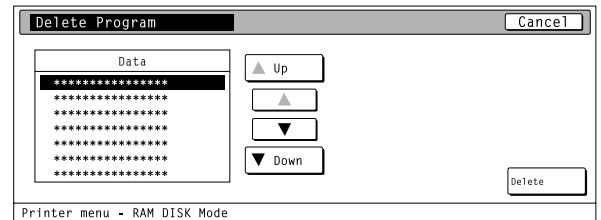
### ⑨ Deleting program data

**1** Touch the “Program” key under the “Delete” setting.



**2** Use the “▲” and “▼” cursor keys to select the program data that you want to delete.

- If you want to return to the [RAM DISK Mode] screen, touch the “Cancel” key.

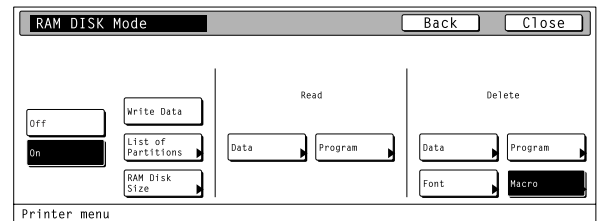


**3** Touch the “Delete” key. The display will return to the basic printer screen and the program data will be deleted.

- “Processing” will be displayed in the basic printer screen while the program data is being deleted.

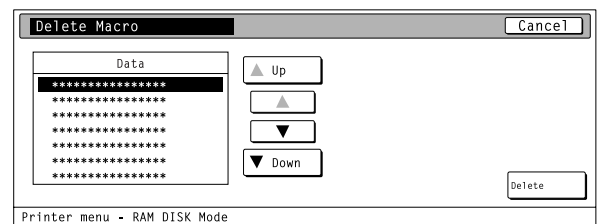
### ⑩ Deleting macro data

**1** Touch the “Macro” key under the “Delete” setting.



**2** Use the “▲” and “▼” cursor keys to select the macro data that you want to delete.

- If you want to return to the [RAM DISK Mode] screen, touch the “Cancel” key.



**3** Touch the “Delete” key. The display will return to the basic printer screen and the macro data will be deleted.

- “Processing” will be displayed in the basic printer screen while the macro data is being deleted.

## 4. Selecting the Printer Settings

### 4-9 Hard disk settings

For more information about the hard disk, refer to "5. Options" on page 5-1.

#### About the hard disk settings

It is possible to perform hard disk settings for the 9 items shown in the following chart.

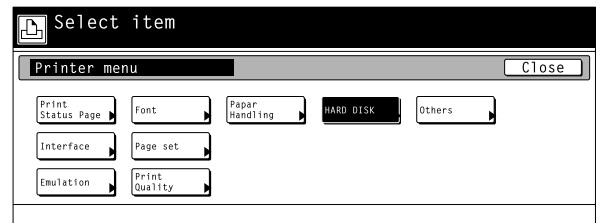
For the most efficient use of the printer functions, select the various settings according to your printing needs.

	Item	Available settings	Remarks
①	<b>Writing data</b> If "Write Data" is selected here, the machine will enter a "waiting for data" state until data is sent from the host computer.	Write Data	
②	<b>Partition List print out</b>	List of Partitions	
③	<b>Format hard disk</b> If "Yes" is selected here, the hard disk will be formatted.	Format	Formats the hard disk only when there is a format error on the disk.
④	<b>Reading data</b> Reads the selected data from the hard disk.	Select from among the data partition names that are displayed.	Displayed only when there is appropriate data on the hard disk.
⑤	<b>Reading program data</b> Reads the selected program data from the hard disk.	Select from among the program partition names that are displayed.	Displayed only when there is appropriate program data on the hard disk.
⑥	<b>Deleting data</b> Deletes the selected data from the hard disk.	Select from among the data partition names that are displayed.	Displayed only when there is appropriate data on the hard disk.
⑦	<b>Deleting font data</b> Deletes the selected font data from the hard disk.	Select from among the fonts that are displayed.	Displayed only when there is appropriate font data on the hard disk.
⑧	<b>Deleting program data</b> Deletes the selected program data from the hard disk.	Select from among the program partition names that are displayed.	Displayed only when there is appropriate program data on the hard disk.
⑨	<b>Deleting macro data</b> Deletes the selected macro data from the hard disk.	Select among the macro partition names that are displayed.	Displayed only when there is appropriate macro data on the hard disk.

## 4. Selecting the Printer Settings

### ● Accessing the Hard Disk settings screen

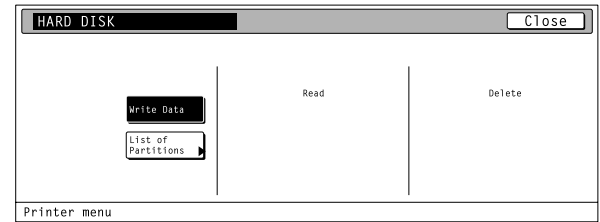
Touch the "HARD DISK" key. The [Hard Disk] screen will appear.



### ① Writing data

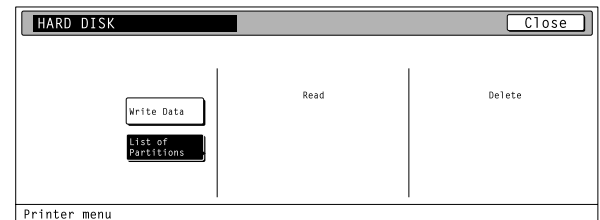
Touch the "Write Data" key. The display will return to the basic printer screen and the machine will enter a "waiting for data" state.

- When data is received from a computer, "Processing" will be displayed in the [Printer Menu] screen. Once the operation is completed, "Waiting" will be displayed.



### ② Partition List print out

Touch the "List of Partitions" key. A Partition List will be printed out.

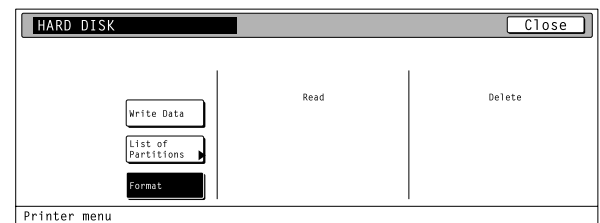


### ③ Format hard disk

1

Touch the "Format" key.

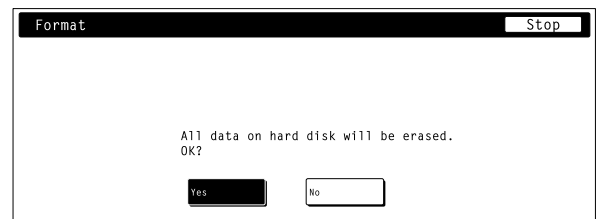
- It is only possible to format the hard disk when there is a format error on the disk. In any other case, the hard disk will NOT be formatted.



2

Touch the "Yes" key. The display will return to the basic printer screen and the hard disk will be formatted.

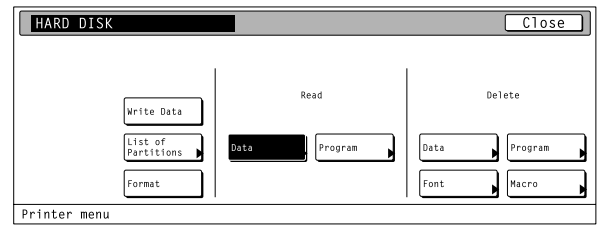
- "Processing" will be displayed in the basic printer screen while the hard disk is being formatted.
- If you select "No" here, the hard disk will not be formatted and the display will return to the [Hard Disk] screen.



## 4. Selecting the Printer Settings

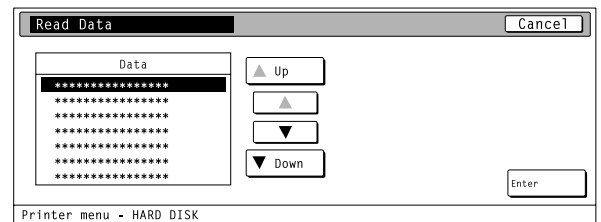
### ④ Reading data

**1** Touch the “Data” key under the “Read” setting.



**2** Use the “▲” and “▼” cursor keys to select the data that you want to be read.

- If you want to return to the [Hard Disk] screen, touch the “Cancel” key.

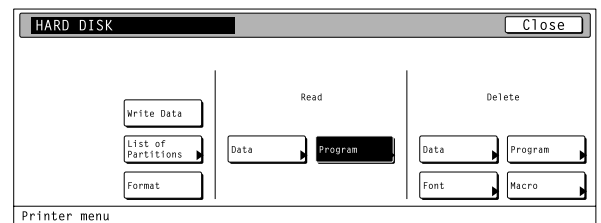


**3** Touch the “Enter” key. The display will return to the basic printer screen and the data will be read.

- “Processing” will be displayed in the basic printer screen while the data is being read.

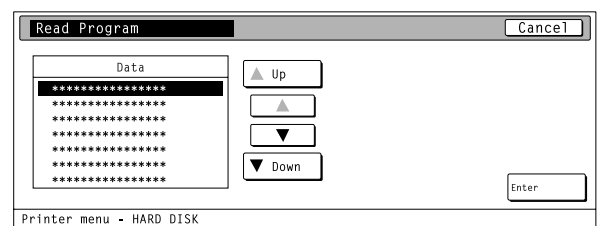
### ⑤ Reading program data

**1** Touch the “Program” key under the “Read” setting.



**2** Use the “▲” and “▼” cursor keys to select the program data that you want to be read.

- If you want to return to the [Hard Disk] screen, touch the “Cancel” key.



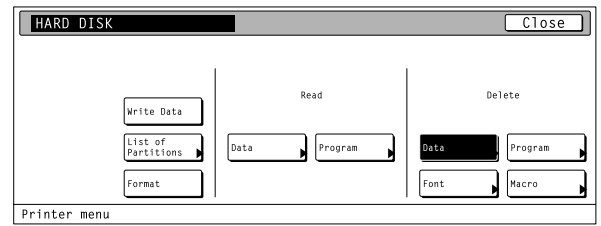
**3** Touch the “Enter” key. The display will return to the basic printer screen and the program data will be read.

- “Processing” will be displayed in the basic printer screen while the program data is being read.

## 4. Selecting the Printer Settings

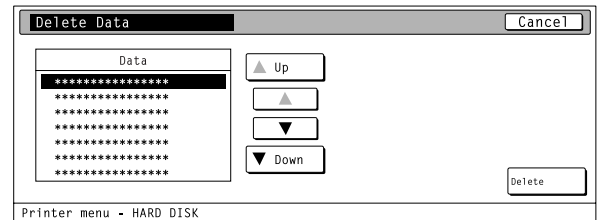
### ⑥ Deleting data

**1** Touch the “Data” key under the “Delete” setting.



**2** Use the “▲” and “▼” cursor keys to select the data that you want to delete.

- If you want to return to the [Hard Disk] screen, touch the “Cancel” key.

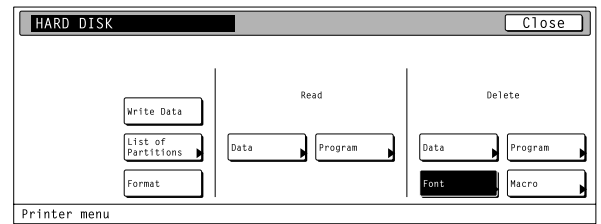


**3** Touch the “Delete” key. The display will return to the basic printer screen and the data will be deleted.

- “Processing” will be displayed in the basic printer screen while the data is being deleted.

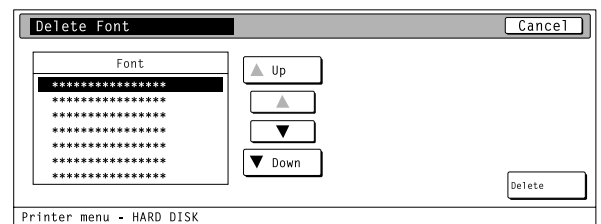
### ⑦ Deleting font data

**1** Touch the “Font” key under the “Delete” setting.



**2** Use the “▲” and “▼” cursor keys to select the font data that you want to delete.

- If you want to return to the [Hard Disk] screen, touch the “Cancel” key.



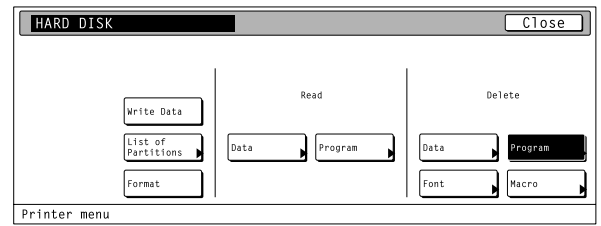
**3** Touch the “Delete” key. The display will return to the basic printer screen and the font data will be deleted.

- “Processing” will be displayed in the basic printer screen while the font data is being deleted.

## 4. Selecting the Printer Settings

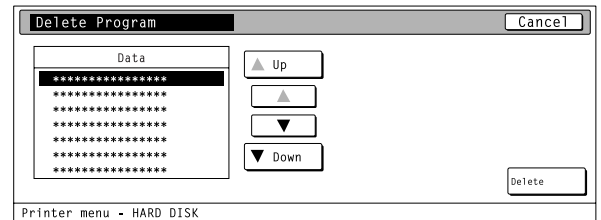
### ⑧ Deleting program data

**1** Touch the “Program” key under the “Delete” setting.



**2** Use the “▲” and “▼” cursor keys to select the program data that you want to delete.

- If you want to return to the [Hard Disk] screen, touch the “Cancel” key.

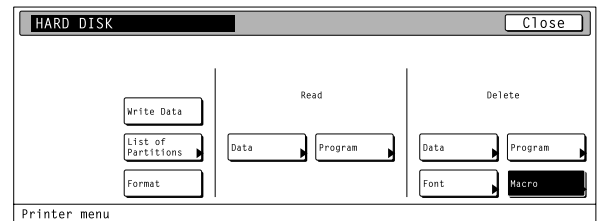


**3** Touch the “Delete” key. The display will return to the basic printer screen and the program data will be deleted.

- “Processing” will be displayed in the basic printer screen while the program data is being deleted.

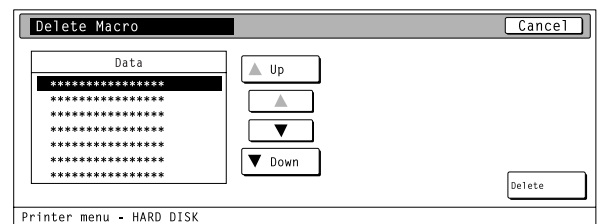
### ⑨ Deleting macro data

**1** Touch the “Macro” key under the “Delete” setting.



**2** Use the “▲” and “▼” cursor keys to select the macro data that you want to delete.

- If you want to return to the [Hard Disk] screen, touch the “Cancel” key.



**3** Touch the “Delete” key. The display will return to the basic printer screen and the macro data will be deleted.

- “Processing” will be displayed in the basic printer screen while the macro data is being deleted.

## 4. Selecting the Printer Settings

### 4-10 Memory card settings

#### Memory Card

This machine comes equipped with a slot for inserting a Memory Card.

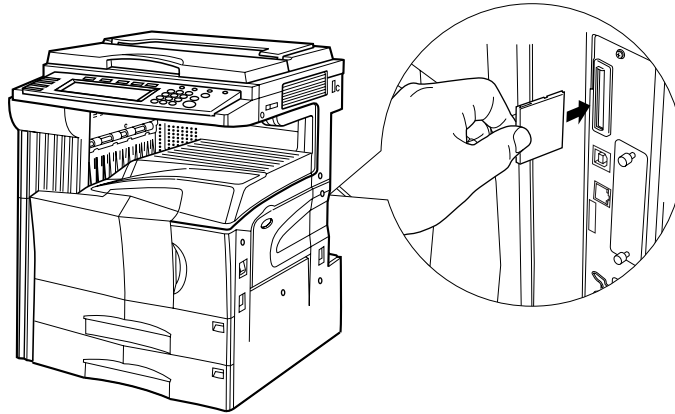
Use a Memory Card that contains fonts in order to print with fonts other than those already installed in the machine, or use the card to save and then read print data.

#### Inserting the Memory Card

Insert the Memory Card into the slot with the front of the card facing the rear of the machine.

#### IMPORTANT!

BE SURE to turn the main switch OFF BEFORE inserting or removing the Memory Card.



#### About the memory card settings

It is possible to perform memory card settings for the 11 items shown in the following chart.

For the most efficient use of the printer functions, select the various settings according to your printing needs.

	Item	Available settings	Remarks
①	<b>Writing data</b> If "Write Data" is selected here, the machine will enter a "waiting for data" state until data is sent from the host computer.	Write Data	Displayed only when the memory card has been inserted.
②	<b>Partition List print out</b>	List of Partitions	Displayed only when the memory card has been inserted.
③	<b>Format memory card</b> If "Yes" is selected here, the memory card will be formatted.	Format	Displayed only when the memory card has been inserted. (ALWAYS format the memory card using this printer. If you attempt to format it with another device, it may become unusable.)
④	<b>Reading data</b> Reads the selected data from the memory card.	Select from among the data partition names that are displayed.	Displayed only when there is appropriate data in the memory card.
⑤	<b>Reading font data</b> Reads all of the font data from the memory card.	Fonts	Displayed only when there is appropriate font data in the memory card.

## 4. Selecting the Printer Settings

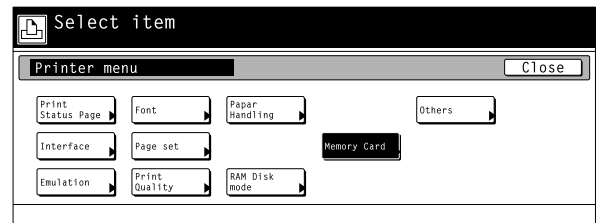
	Item	Available settings	Remarks
⑥	<b>Reading program data</b> Reads the selected program data from the memory card.	Select from among the program partition names that are displayed.	Displayed only when there is appropriate program data in the memory card.
⑦	<b>Reading macro data</b> Reads all of the macro data from the memory card.	Macro	Displayed only when there is appropriate macro data in the memory card.
⑧	<b>Deleting data</b> Deletes the selected data from the memory card.	Select from among the data partition names that are displayed.	Displayed only when there is appropriate data in the memory card.
⑨	<b>Deleting font data</b> Deletes the selected font data from the memory card.	Select from among the fonts that are displayed.	Displayed only when there is appropriate font data in the memory card.
⑩	<b>Deleting program data</b> Deletes the selected program data from the memory card.	Select from among the program partition names that are displayed.	Displayed only when there is appropriate program data in the memory card.
⑪	<b>Deleting macro data</b> Deletes the selected macro data from the memory card.	Select among the macro partition names that are displayed.	Displayed only when there is appropriate macro data in the memory card.



## 4. Selecting the Printer Settings

### ● Accessing the Memory Card settings screen

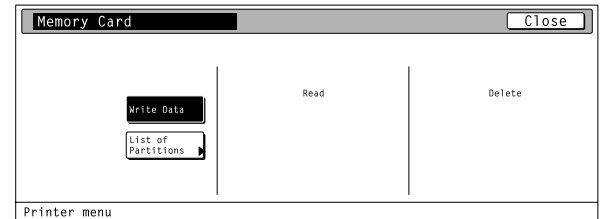
Touch the “Memory Card” key. The [Memory Card] screen will appear.



### ① Writing data

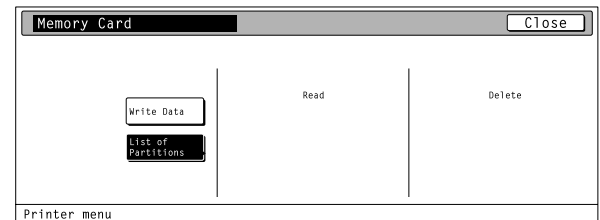
Touch the “Write Data” key. The display will return to the basic printer screen and the machine will enter a “waiting for data” state.

- When data is received from a computer, “Processing” will be displayed in the [Printer Menu] screen. Once the operation is completed, “Waiting” will be displayed.



### ② Partition List print out

Touch the “List of Partitions” key. A Partition List will be printed out.

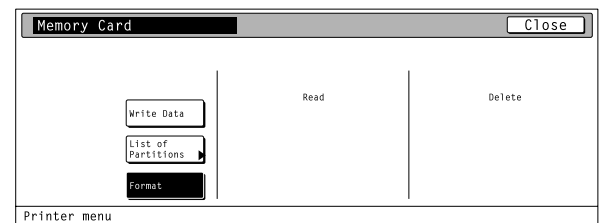


### ③ Format memory card

1

Touch the “Format” key.

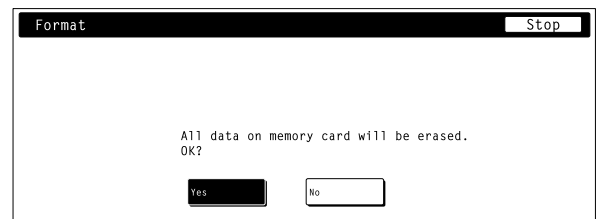
- ALWAYS format the memory card using this printer.



2

Touch the “Yes” key. The display will return to the basic printer screen and the memory card will be formatted.

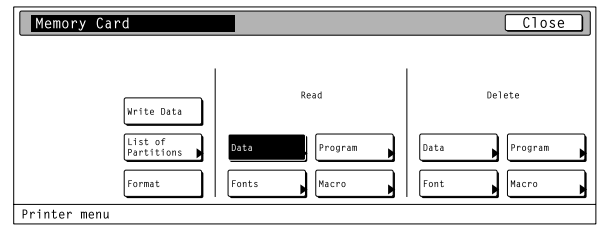
- “Processing” will be displayed in the basic printer screen while the memory card is being formatted.
- If you select “No” here, the memory card will not be formatted and the display will return to the [Memory Card] screen.



## 4. Selecting the Printer Settings

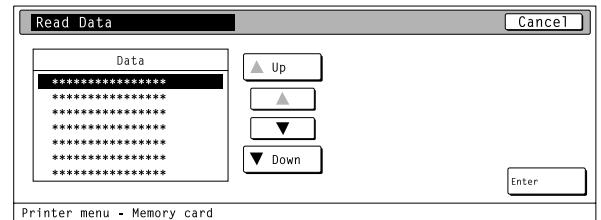
### ④ Reading data

**1** Touch the “Data” key under the “Read” setting.



**2** Use the “▲” and “▼” cursor keys to select the data that you want to be read.

- If you want to return to the [Memory Card] screen, touch the “Cancel” key.

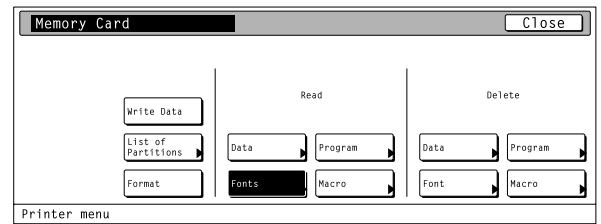


**3** Touch the “Enter” key. The display will return to the basic printer screen and the data will be read.

- “Processing” will be displayed in the basic printer screen while the data is being read.

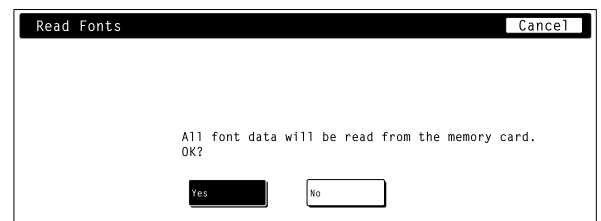
### ⑤ Reading font data

**1** Touch the “Fonts” key under the “Read” setting.



**2** Touch the “Yes” key. The display will return to the basic printer screen and the font data will be read.

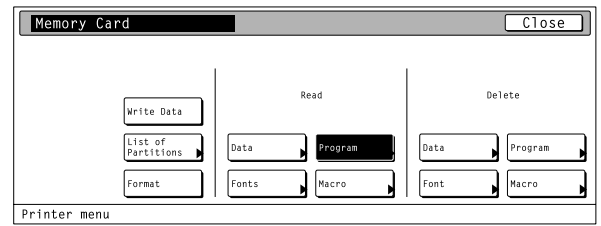
- “Processing” will be displayed in the basic printer screen while the font data is being read.
- If you select “No” here, the font data will not be read and the display will return to the [Memory Card] screen.



## 4. Selecting the Printer Settings

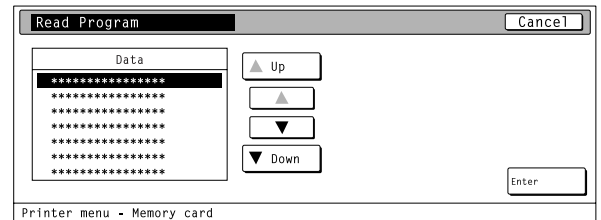
### ⑥ Reading program data

**1** Touch the “Program” key under the “Read” setting.



**2** Use the “▲” and “▼” cursor keys to select the program data that you want to be read.

- If you want to return to the [Memory Card] screen, touch the “Cancel” key.

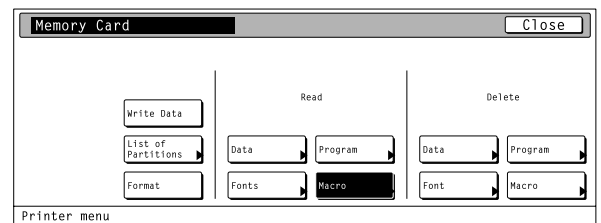


**3** Touch the “Enter” key. The display will return to the basic printer screen and the program data will be read.

- “Processing” will be displayed in the basic printer screen while the program data is being read.

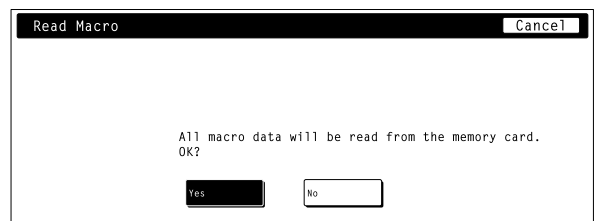
### ⑦ Reading macro data

**1** Touch the “Macro” key under the “Read” setting.



**2** Touch the “Yes” key. The display will return to the basic printer screen and the macro data will be read.

- “Processing” will be displayed in the basic printer screen while the macro data is being read.
- If you select “No” here, the macro data will not be read and the display will return to the [Memory Card] screen.

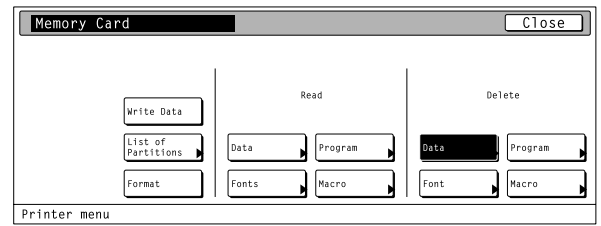


## 4. Selecting the Printer Settings

### ⑧ Deleting data

1

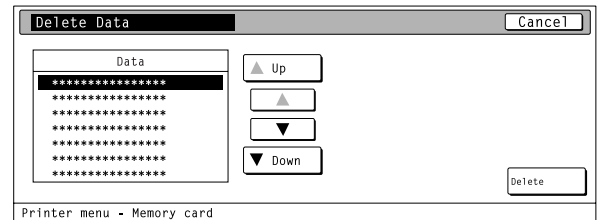
Touch the "Data" key under the "Delete" setting.



2

Use the "▲" and "▼" cursor keys to select the data that you want to delete.

- If you want to return to the [Memory Card] screen, touch the "Cancel" key.



3

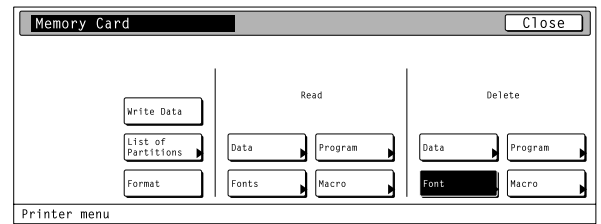
Touch the "Delete" key. The display will return to the basic printer screen and the data will be deleted.

- "Processing" will be displayed in the basic printer screen while the data is being deleted.

### ⑨ Deleting font data

1

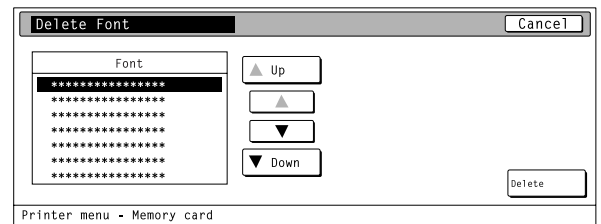
Touch the "Font" key under the "Delete" setting.



2

Use the "▲" and "▼" cursor keys to select the font data that you want to delete.

- If you want to return to the [Memory Card] screen, touch the "Cancel" key.



3

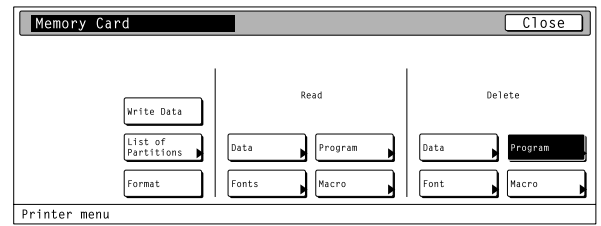
Touch the "Delete" key. The display will return to the basic printer screen and the font data will be deleted.

- "Processing" will be displayed in the basic printer screen while the font data is being deleted.

## 4. Selecting the Printer Settings

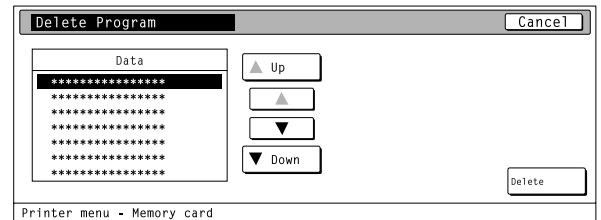
### ⑩ Deleting program data

**1** Touch the “Program” key under the “Delete” setting.



**2** Use the “▲” and “▼” cursor keys to select the program data that you want to delete.

- If you want to return to the [Memory Card] screen, touch the “Cancel” key.

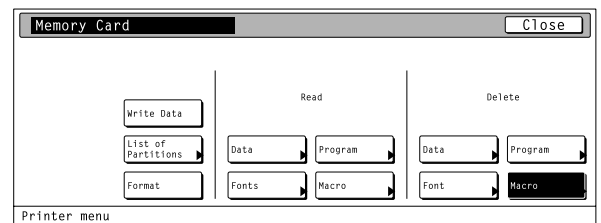


**3** Touch the “Delete” key. The display will return to the basic printer screen and the program data will be deleted.

- “Processing” will be displayed in the basic printer screen while the program data is being deleted.

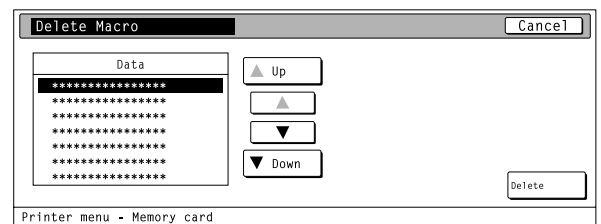
### ⑪ Deleting macro data

**1** Touch the “Macro” key under the “Delete” setting.



**2** Use the “▲” and “▼” cursor keys to select the macro data that you want to delete.

- If you want to return to the [Memory Card] screen, touch the “Cancel” key.



**3** Touch the “Delete” key. The display will return to the basic printer screen and the macro data will be deleted.

- “Processing” will be displayed in the basic printer screen while the macro data is being deleted.

## 4. Selecting the Printer Settings

---

### 4-11 ROM (option) settings

#### About the ROM (option) settings

It is possible to perform ROM (option) settings for the 2 items shown in the following chart.

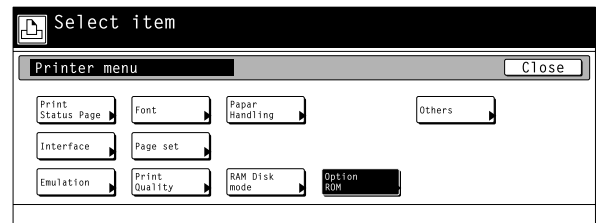
For the most efficient use of the printer functions, select the various settings according to your printing needs.

	Item	Available settings	Remarks
①	<b>Partition List print out</b>	List of Partitions	
②	<b>Reading data</b> Reads the selected data from ROM (option).	Select from among the data partition names that are displayed.	Displayed only when there is appropriate data in ROM (option).

## 4. Selecting the Printer Settings

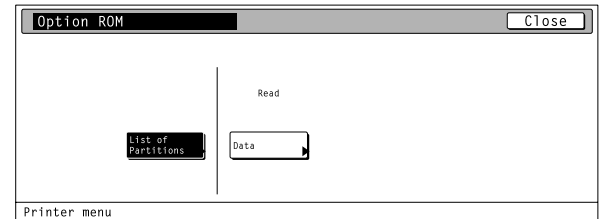
### ● Accessing the ROM (option) settings screen

Touch the "Option ROM" key. The [Option ROM] screen will appear.



### ① Partition List print out

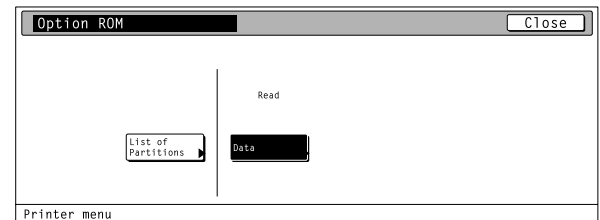
Touch the "List of Partitions" key. A Partition List will be printed out.



### ② Reading data

Touch the "Data" key under the "Read" setting.

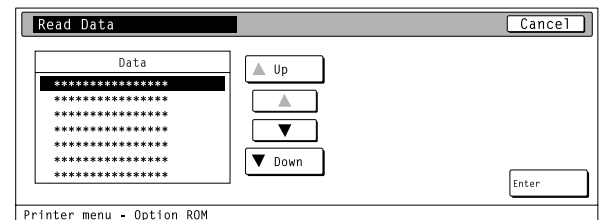
1



Use the "▲" and "▼" cursor keys to select the data that you want to be read.

- If you want to return to the [Option ROM] screen, touch the "Cancel" key.

2



Touch the "Enter" key. The display will return to the basic printer screen and the data will be read.

- "Processing" will be displayed in the basic printer screen while the data is being read.

3

## 4. Selecting the Printer Settings

### 4-12 Additional settings

#### About the additional settings

It is possible to perform additional settings for the 6 items shown in the following chart.  
For the most efficient use of the printer functions, select the various settings according to your printing needs.

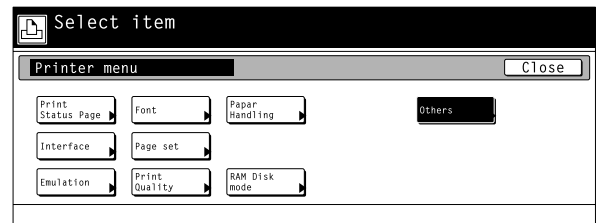
	Item	Available settings	Remarks
①	<b>Form Feed Time Out</b> Sets the amount of time the machine will wait for the "GO" button to be touched before it prints the next page automatically.	– 495 seconds	If the printer doesn't receive a "end-of-data" command from the computer even after receiving the last portion of data for that job, the last page will not be printed and will be saved temporarily. Once the pre-determined amount of wait time passes, that data will be automatically printed. If, however, you select "0" for this setting, the data will NOT be printed out automatically.
②	<b>Resource Protect mode</b> Protects downloaded resource data such as fonts and macros and saves the PCL resource even if the emulation protocol is changed. Under the "Permanent" setting, temporary resource information will not be protected, but under the "Permanent/Temporary" setting, temporary resource information will be protected as well.	OFF, Permanent, Permanent/Temporary	
③	<b>Auto Continue On/Off and Recovery Time</b> You can select to have the error state released and printing continue after a designated recovery time (Auto Continue) in cases when either of the following messages is displayed. "Memory overflow" "Print overrun" The length of the recovery time can be changed as well.	000 – 495 seconds	
④	<b>Finishing Error</b> If the error detection setting for duplex (staple) printing has been turned "On", and you attempt to print onto a paper size and paper type that cannot be used for duplex (staple) printing, the error message will be displayed and printing will stop. To print onto one-side (no staple) of the paper only when the error message is displayed, press the "GO" key. The default setting is "Off".	Off, On	
⑤	<b>Service Maintenance menu</b> This is the maintenance menu used by the service personnel.	Print Status Page	
⑥	<b>Printer Reset</b> Resets only the Printer Board without the need to turn off power to the machine.	Printer Reset	
⑦	<b>Dump received data</b> Data received by the printer is printed out in hex code for program and file debugging purposes. This hex-dump mode will be released automatically in the following situations. <ul style="list-style-type: none"> <li>• Touch the "GO" key.</li> <li>• A form feed timeout occurs.</li> </ul>	Print HEX-DUMP	



## 4. Selecting the Printer Settings

### ● Accessing the Additional settings screen

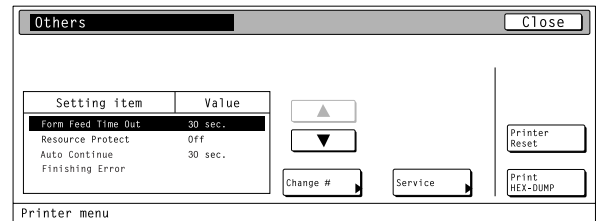
Touch the "Others" key. The [Others] screen will appear.



### ① Form Feed Time Out

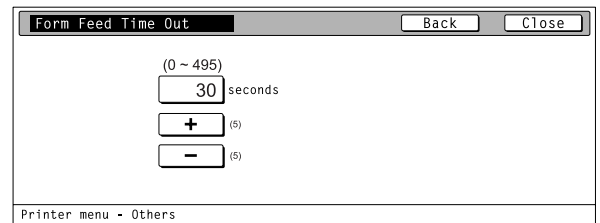
1

Use the "▲" and "▼" cursor keys to select "Form Feed Time Out" and then touch the "Change" key.



2

Use the "+" and/or "-" key to select the desired length of time before form feed timeout.



3

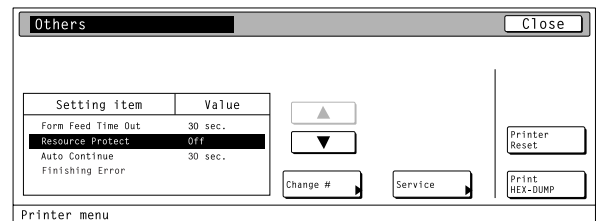
Once you have completed the setting, touch the "Close" key. The display will return to the [Others] screen.

- To cancel the setting, touch the "Back" key.

### ② Resource Protect mode

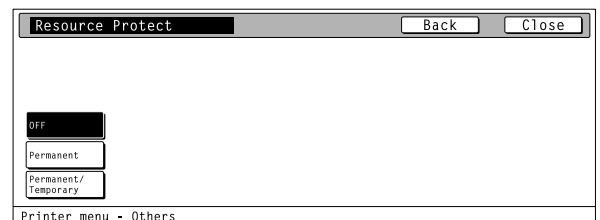
1

Use the "▲" and "▼" cursor keys to select "Resource Protect" and then touch the "Change" key.



2

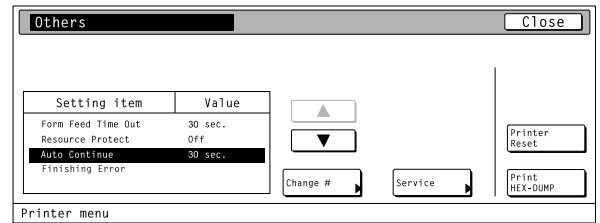
Select the desired setting: "Off", "Permanent" or "Permanent/Temporary".



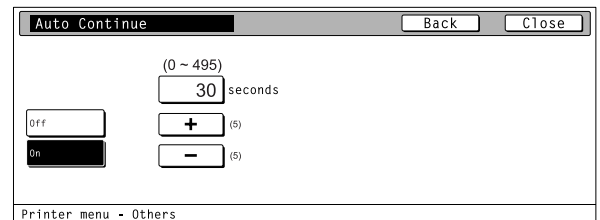
## 4. Selecting the Printer Settings

### ③ Auto Continue On/Off and Recovery Time

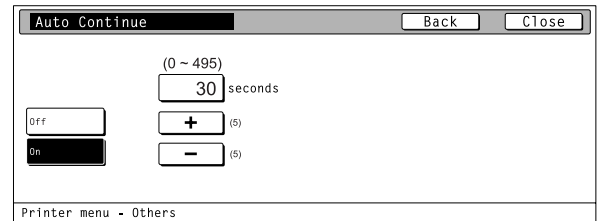
**1** Use the “▲” and “▼” cursor keys to select “Auto continue” and then touch the “Change” key.



**2** Touch the “On” key.  
 • If you select “Off” here, the auto continue recovery time setting will not be available.



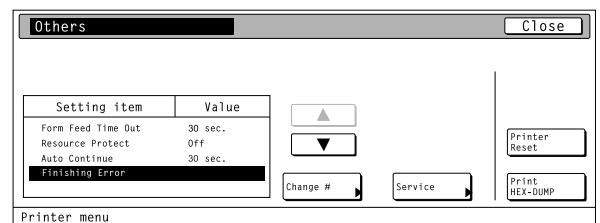
**3** Use the “+” and/or “-” key to select the desired recovery time.



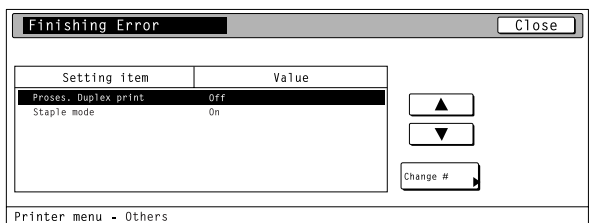
**4** Once you have completed the setting, touch the “Close” key. The display will return to the [Others] screen.  
 • To cancel the setting, touch the “Back” key.

### ④ Finishing Error

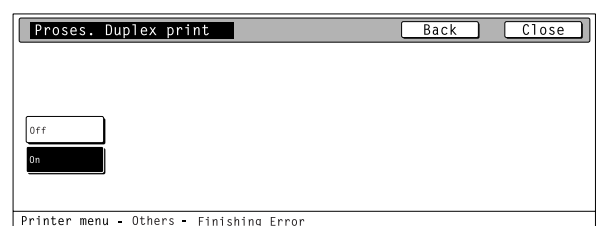
**1** Use the “▲” and “▼” cursor keys to select “Finishing Error” and then touch the “Change” key.



**2** Use the “▲” and “▼” cursor keys to select the desired item and then touch the “Change” key. The setting screen for the selected item will appear.  
 Proses. Duplex print, Staple mode



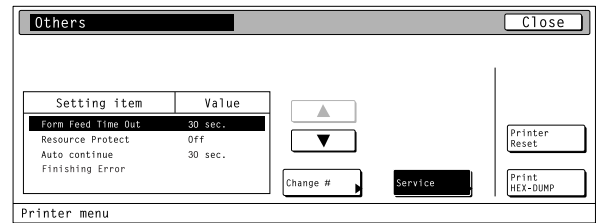
**3** Select the desired setting for each item and then touch the “Close” key. The display will return to the [Others] screen.  
 • To cancel the setting, touch the “Back” key.



## 4. Selecting the Printer Settings

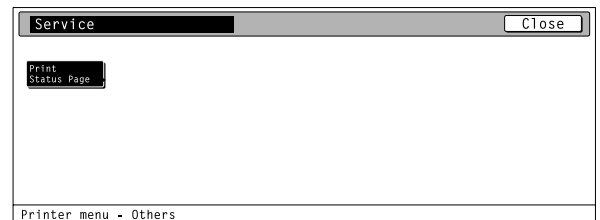
### ⑤ Service Maintenance menu

**1** Touch the "Service" key.



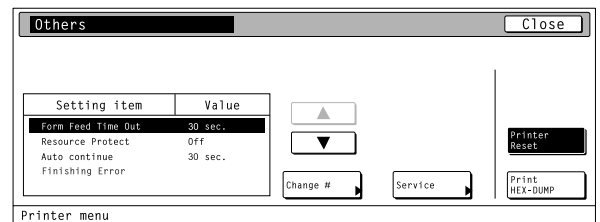
### **2** Service Representative Status Page print out

Touch the "Print Status Page" key. A Service Representative Status Page will be printed out.

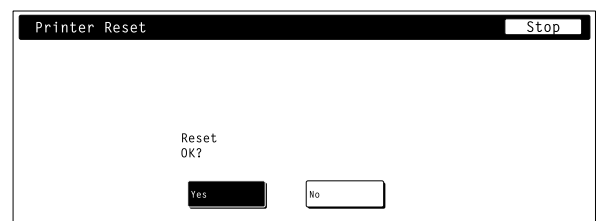


### ⑥ Printer Reset

**1** Touch the "Printer Reset" key.

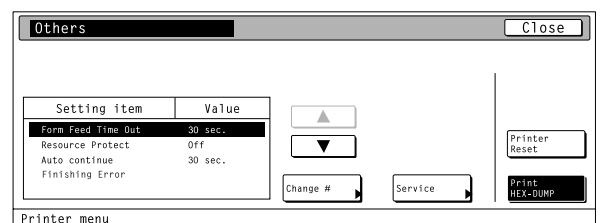


**2** Touch the "Yes" key. The Printer Board will be reset.  
 • If you select "No" here, the display will return to the [Others] screen.

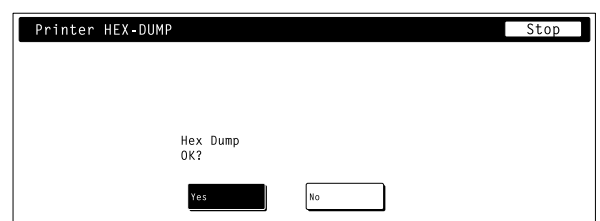


### ⑦ Dump received data

**1** Touch the "Print HEX-DUMP" key.



**2** Touch the "Yes" key. A hex-dump of the received data will be printed out.  
 • If you select "No" here, the display will return to the [Others] screen.



## 4. Selecting the Printer Settings

### 4-13 e-MPS settings

**NOTE:** The optional hard disk must be installed in order to use all of the e-MPS function.

**NOTE:** It is possible to use the [Proof and Hold] and [Stored job print out] of the e-MPS function when “On” is selected under the RAM disk On/Off setting (P4-24).

For more information about e-MPS, refer to the KX Printer Drivers Operation Guide.

#### About the e-MPS settings

It is possible to perform e-MPS settings for the 6 items shown in the following chart.

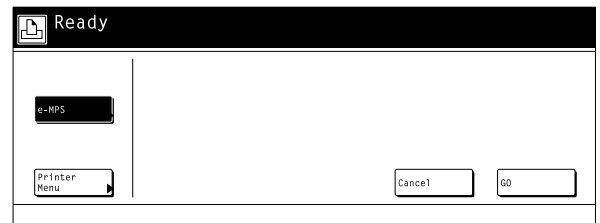
For the most efficient use of the printer functions, select the various settings according to your printing needs.

	Item	Available settings	Remarks
①	<b>Quick copy print out</b>	Print out of a quick copy	Prints out the print job that is designated for the “Quick Copy” or “Proof and Hold” setting in the printer driver.
②	<b>Private print/Stored job print out</b>	Print out of private and stored jobs	Prints out the print job that is designated for the “Private Print” or “Job Storage” setting in the printer driver.
③	<b>Virtual Mailbox data print out</b>	Print out of data in the Virtual Mailbox	Prints out the print job that is saved in the Virtual Mailbox which is designated for the “Virtual Mailbox (VMB)” setting in the printer driver.
④	<b>Virtual Mailbox Data List print out</b>	Print out of the Virtual Mailbox List	
⑤	<b>Code Job List print out</b>	Print out of the Cod JOB List	
⑥	<b>e-MPS configurations</b> The following maximum size settings can be performed for the hard disk. <ul style="list-style-type: none"> <li>• Temporary protection for code jobs</li> <li>• Permanent protection for code jobs</li> <li>• Virtual Mailbox</li> </ul> The maximum number of quick copy jobs to be registered can be set as well.	Number of quick copy jobs, temporary protection for code job size, permanent protection for code job size	

## 4. Selecting the Printer Settings

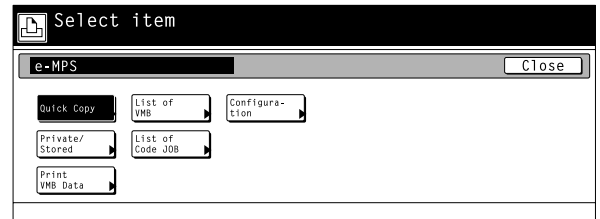
### ● Accessing the e-MPS settings screen

Touch the “e-MPS” key. The [e-MPS] screen will appear.

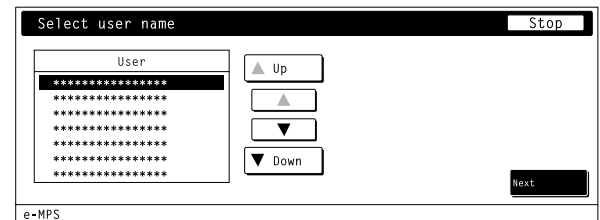


### ① Quick copy print out

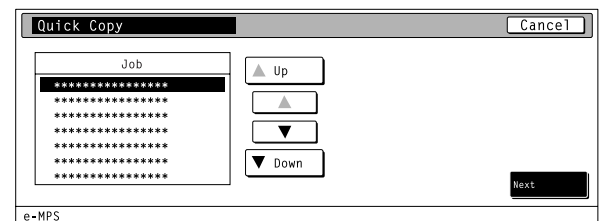
1 Touch the “Quick Copy” key.



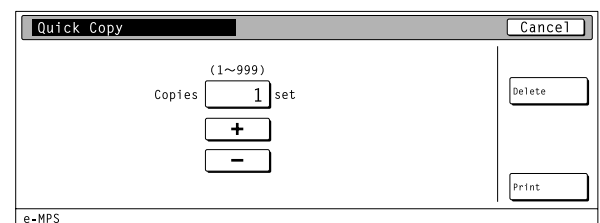
2 Use the “▲” and “▼” cursor keys to select your user name and then touch the “Next” key.



3 Use the “▲” and “▼” cursor keys to select the desired job and then touch the “Next” key.



4 Use the “+” and/or “-” key or the numeric keys to select the number of pages to be printed.



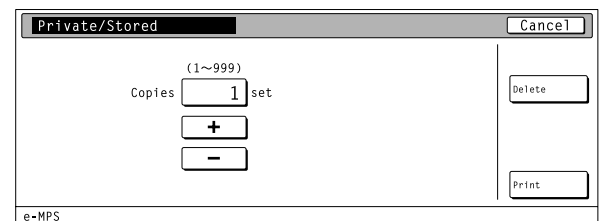
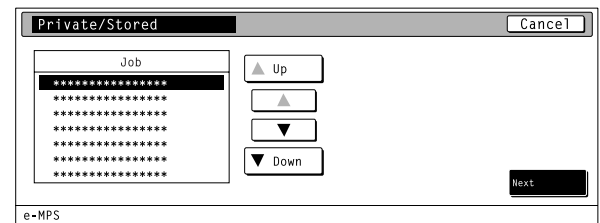
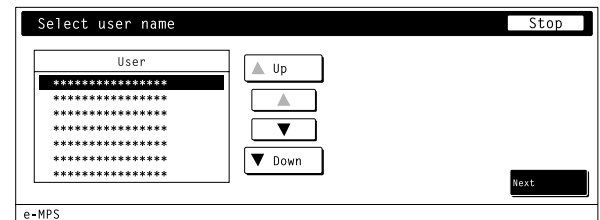
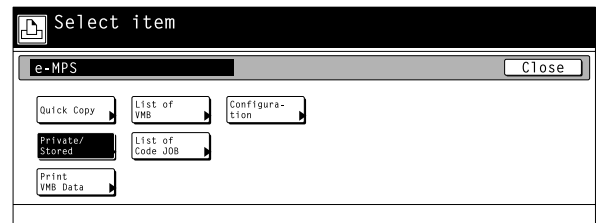
5 Touch the “Print” key.  
• If you want to delete the selected job, touch the “Delete” key.

6 Touch the “GO” key and printing will begin.  
• If you want to cancel printing, touch the “CANCEL” key.

## 4. Selecting the Printer Settings

### ② Private print/Stored job print out

- 1** Touch the "Private/Stored" key.
- 2** Use the "▲" and "▼" cursor keys to select your user name and then touch the "Next" key.
- 3** Use the "▲" and "▼" cursor keys to select the desired job and then touch the "Next" key.
- 4** Use the "+" and/or "-" key or the numeric keys to select the number of pages to be printed.
- 5** Touch the "Print" key.
  - If an ID has been set for the selected job, the screen for inputting the ID will appear. Enter the appropriate ID.
  - If you want to delete the selected job, touch the "Delete" key.
- 6** Touch the "GO" key and printing will begin.
  - If you want to cancel printing, touch the "CANCEL" key.

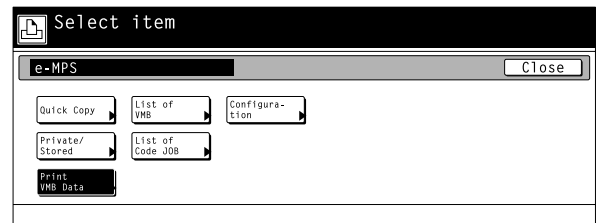


## 4. Selecting the Printer Settings

### ③ Virtual Mailbox data print out

1

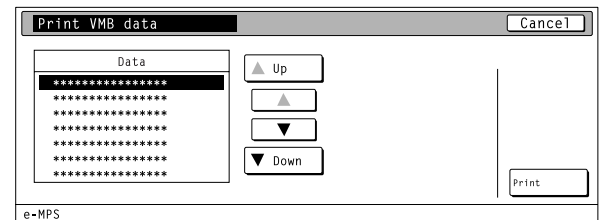
Touch the "Print VMB Data" key.



2

Use the "▲" and "▼" cursor keys to select the desired tray and then touch the "Print" key.

- If an ID has been set for the selected job, the screen for inputting the ID will appear. Enter the appropriate ID.



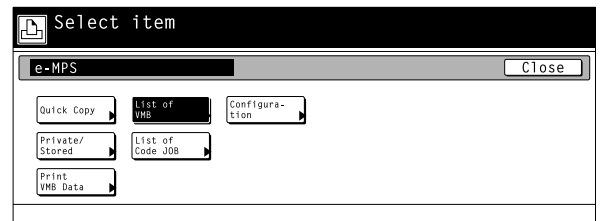
3

Touch the "GO" key and printing will begin.

- If you want to cancel printing, touch the "CANCEL" key.

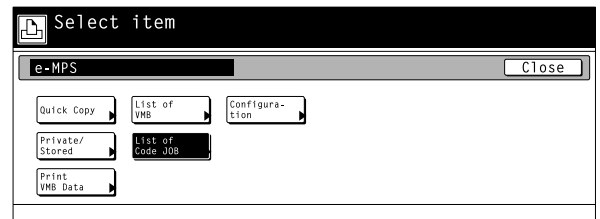
### ④ Virtual Mailbox Data List print out

Touch the "List of VMB" key. A Virtual Mailbox Data List will be printed out.



### ⑤ Code Job List print out

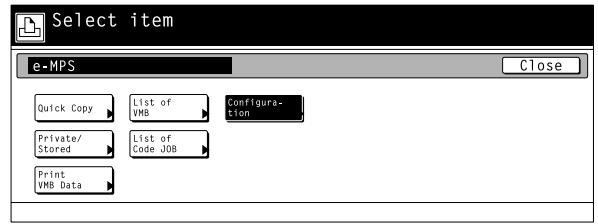
Touch the "List of Code JOB" key. A Code Job List will be printed out.



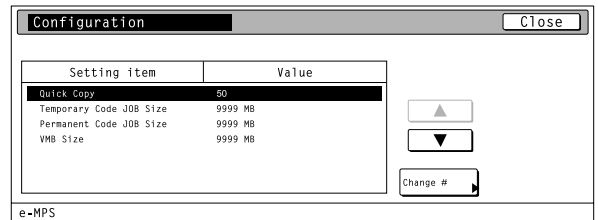
## 4. Selecting the Printer Settings

### ⑥ e-MPS configurations

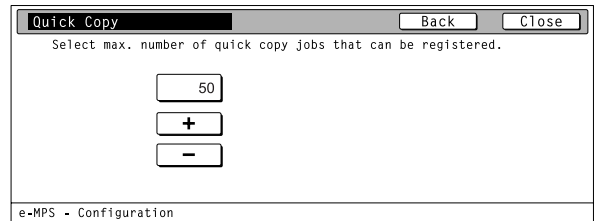
**1** Touch the "Configuration" key.



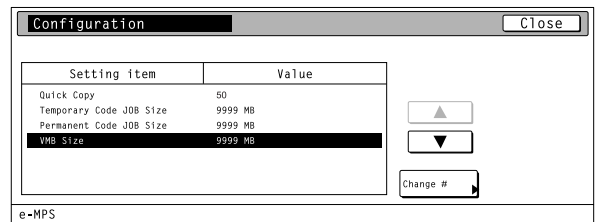
**2** **Maximum number of quick copy jobs**  
Use the "▲" and "▼" cursor keys to select "Quick Copy" and then touch the "Change" key.



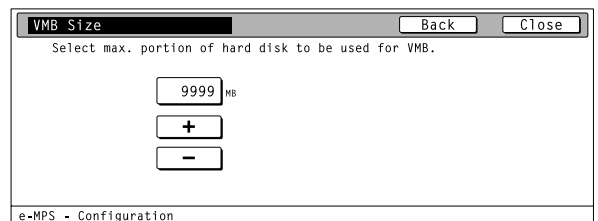
**3** Use the "+" and/or "-" key to select the maximum number of quick copy jobs that can be registered.  
• To cancel the setting, touch the "Back" key.



**4** **Temporary protection for code job size/Permanent protection for code job size/VMB size**  
Use the "▲" and "▼" cursor keys to select the desired item and then touch the "Change" key.



**5** Use the "+" and/or "-" key to select the maximum size for that item.  
• To cancel the setting, touch the "Back" key.





# 5. Options

---

## **Additional Memory**

This machine comes standard with 64 MB of memory installed. By adding more memory, more complex printing can be accomplished and printing speed can be increased. There are two slots available for adding memory and increasing the memory installed in this machine to up to a maximum of 512 MB.

## **Hard Disk**

If the optional hard disk is installed in this machine, received and rasterized data can be saved onto that disk. When printing out multiple sets of the same documents, this allows faster printing with the collating function as well as enabling the use of the e-MPS function.

## **Serial Interface Option**

Install the serial interface in this machine when the serial port is used for printer interface.

# 6. KX Driver (Specific function)

The following section explains the specific functions of the KX driver.

Refer to the KX Printer Drivers Operation Guide regarding general explanations.

**(Click on here when you want to see the KX Printer Drivers Operation Guide.)**

\* The following procedure is explained as though it is being carried out in Windows XP. If you are using another operating system, use this procedure simply as reference.

\* Depending upon version upgrades of the printer driver, the screenshots shown here may differ somewhat from that of the actual printer driver.

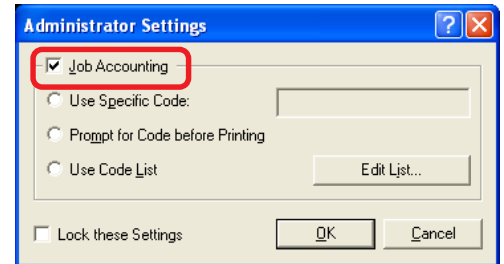
\* Depending upon the model of your copier, there may be functions that are not supported or that require optional equipment to be installed. Even if the settings for such functions are performed, they will not be effective.

## Copy Management

You can use this setting when Copy Management is turned ON in the copier. Click on [Administrator Settings] button under [Device Settings] tab and then, the [Administrator Settings] dialog box will appear. Copy Management for Driver will now be possible.

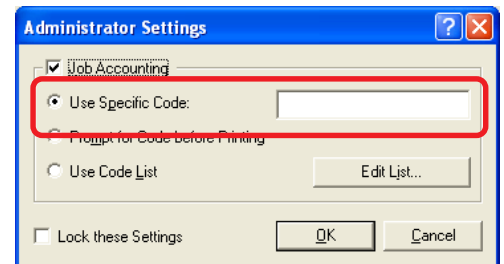
### Job Accounting

You can add a check mark in the [Job Accounting] when Copy Management is turned ON in the copier.



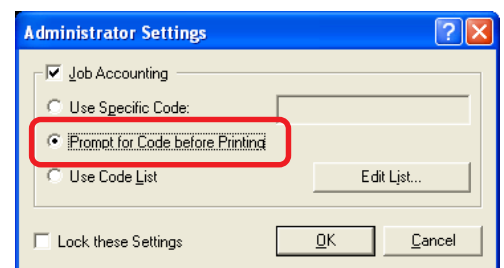
### Use Specific Code

Select [Use Specific Code] check box to use the specific code. The setting under [Use Specific Code] does not match the setting made in the copier itself, it will not be possible to print out.



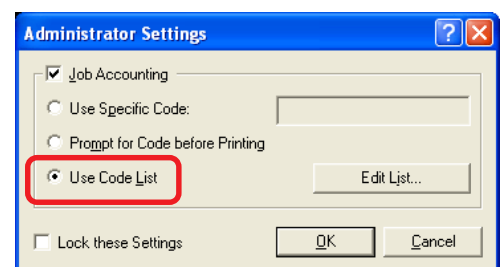
### Prompt for Code before printing

Select [Prompt for Code before Printing] check box to check a Management Code when you try to print. Once a Management Code is registered, the "Print Option" dialog box will appear when you try to print in order to allow you to enter your Management Code.



### Use Code List

It is possible to register more than one management code. (Refer to 6-2).



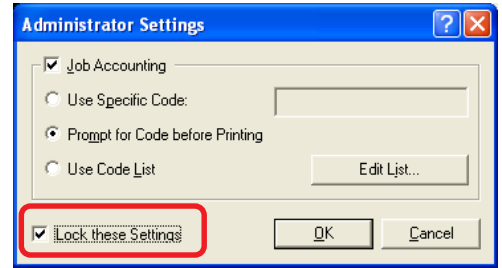
## 6. KX Driver (Specific function)

### Lock These Settings...

Select [Lock these settings] check box to lock this setting. The [Password Settings] dialog box will appear. Once a password is registered, this password will be required when you want to change a Management Code.

### Note

If, for any reason, you lose reference to this password, you will not be able to change the Management Code. Therefore, you should exercise DUE CAUTION in the management of the password that you register here.

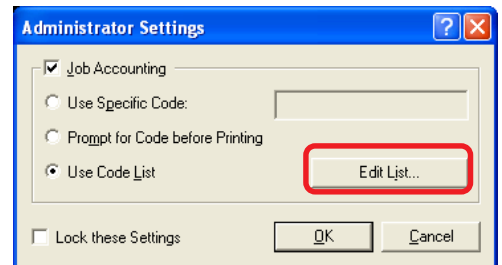


- \* If Copy Management is turned ON and this setting does not match the setting made in the printer itself, it will not be possible to make test prints. Thus, when you install the printer driver, you will need to check the Copy Management settings and make a test print AFTER the installation procedure is complete.
- \* When copy Management is turned ON, even if you send a print command with a DOS "COPY" command, printing will not be possible if you do not use a printer driver.

### Registering management codes

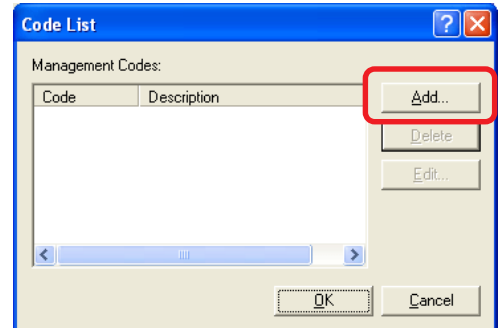
1

Click on the [Edit list] button.  
The [Code list] dialog box will appear.



2

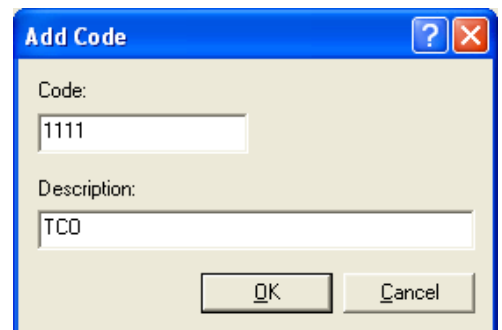
Click on the [Add] button.  
The [Add Code] dialog box will appear.



3

Type in the desired information in the [Code] and [Description] fields and then click on the [OK] button. The entered management code will be added to the [Code list] dialog box.

\* In order to change or delete registered management codes, select the corresponding code and then click on the [Edit] or [remove] button, as appropriate.



## Free Manuals Download Website

<http://myh66.com>

<http://usermanuals.us>

<http://www.somanuals.com>

<http://www.4manuals.cc>

<http://www.manual-lib.com>

<http://www.404manual.com>

<http://www.luxmanual.com>

<http://aubethermostatmanual.com>

Golf course search by state

<http://golfingnear.com>

Email search by domain

<http://emailbydomain.com>

Auto manuals search

<http://auto.somanuals.com>

TV manuals search

<http://tv.somanuals.com>