

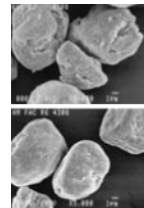
## SPACE TO THINK

# BIGGER.

For workgroups that require a wide variety of output up to A3, at speed. This flexible new generation printer, with up to 1,000 sheets paper capacity, can accommodate increases in memory, especially helpful for CAD and DTP environments. Low noise, compact design and cost-effective ECOSYS technology give you more space to think about big ideas.

- 32 pages per minute in A4, 16 pages per minute in A3
- 64 MB memory standard, upgradeable to 576 MB
- PDF direct printing from USB Flash Memory devices
- Eco-friendly, ozone-free technology
- Long-life components and easy maintenance
- Duplex unit and network connectivity as standard

Benefit from a rare combination of talents: high quality A3 output yet small footprint and a remarkably low noise level.



Kyocera shape controlled toner makes the most of every one of the 1,200 dots per inch (above: conventional; below: shape controlled toner).



# FS-6950DN

## A3 MONOCHROME WORKGROUP PRINTER

**ECOSYS** devices are designed to minimise both direct costs and indirect costs, such as maintenance, administration and consumables. The cartridge-free system requires only the toner to be replaced. The modular design concept allows you to add workflow-enhancing functions and a wide variety of paper handling capabilities as required. Integrated system software provides long-term cross-network compatibility. Kyocera's long-life components cost you and the environment less.

### System platform:

The FS-6950DN offers USB, parallel and network connectivity as standard and delivers problem-free system administration. Kyocera's single platform technology means that the same driver can be used for every Kyocera PCL/PostScript print device on the network; from single-user desktop printers to high-end multifunctional systems. Only Kyocera offers this effortless combination of IT sophistication and high-performance paper handling expertise.

### PRESCRIBE IIe:

With the Kyocera page design and control language PRESCRIBE IIe, even complex graphics, logos and forms (even multipart forms) can be created independently of the system and saved and updated in the printer. Consequently, integration into print files no longer applies. They are only accessed as required and therefore relieve the load on the network.

### KM-NET for Client/KM-NET Viewer:

The settings of all printers on the network can be checked visually and amended from any Windows PC. KM-NET for Client enables easy setup and monitoring of the printer status via parallel, USB or network connection. KM-NET Viewer is an advanced printer management software tool using the standardized protocol SNMP.

### GENERAL

Technology: Kyocera ECOSYS, Laser  
Engine speed: Up to 32/16 pages per minute A4/A3 simplex  
Up to 23/10 pages per minute A4/A3 duplex  
Resolution: Fine1200, Fast1200, 600x600, 300x300.  
Time to first page: 9 seconds or less  
Warm-up time: 15 seconds or less from power on  
Duty cycle: Max. 150,000 pages per month, max. average 20,000 pages per month  
Power source: AC 220 ~ 240 V, 50/60 Hz  
Power consumption: Printing: 555 W, Stand-by: 10 W, Power-Saving (ECOpower): 4.9 W  
Noise (ISO 7779): Printing: 50 dB(A), Stand-by: 40 dB(A), Power-Saving (ECOpower): Immeasurably low  
Dimensions (W x D x H): Main unit: 469 x 395 x 285 mm  
Weight: Main unit: Approx. 19.5 kg  
Certifications: TÜV/GS, CE, PTS  
This product is manufactured according to ISO 9001 quality standard and ISO 14001 environmental standard.

### PAPER HANDLING

All paper capacities quoted are based on a paper thickness of max. 0.11 mm. Please use paper recommended by Kyocera under normal environmental conditions.

Input capacity: 250-sheet universal paper cassette, 60-120 g/m<sup>2</sup>, A3, B4, A4-R, A4, A5, B5, Letter, Letter-R, Legal, Ledger, Custom (139.7 x 148 mm to 297 x 432 mm) 100-sheet multi-purpose tray, 60-220 g/m<sup>2</sup>, A3, B4, A4-R, A4, A5, A6-R, B5, Letter, Letter-R, Legal, Ledger, Custom (70 x 148 mm to 297 x 450 mm)  
Max. input capacity with 4 optional paper feeders PF-430: 1,350 sheets  
Duplex as standard supports A3-A5-R, 60-120 g/m<sup>2</sup>  
Output capacity: 250 sheets face-down with paper full sensor and optional 250 sheets face-up with PT-430

### CONTROLLER

Processor: PowerPC 750 / 400 MHz  
Memory: Standard 64 MB + ECOmemory, max. 576 MB  
Emulations: PCL6/PCL5e incl. P/L, KPDL 3 (PostScript 3 compatible), PDF direct print, Line Printer, IBM Proprinter X24E, Epson LQ-850, Diablo 630, KCGL (HP 7550A)  
Controller language: PRESCRIBE IIe  
Fonts: 80 outline fonts accessible in all emulations, 1 bitmap font, 45 types of one-dimensional barcodes plus two-dimensional barcode PDF-417,  
Downloadable fonts: Kyocera, PCL + TrueType format, Type 1 + 3 format  
Print features: Duplex, Accounting, PDF direct printing, eMPS, low noise, no Ozone, USB-Host

### INTERFACES

Standard interface: High speed bi-directional parallel (IEEE 1284), USB 2.0 (Hi-Speed), Fast Ethernet 10Base-T/100Base-TX, USB Host Interface dedicated for USB Flash Memory device, KUIO-LV option interface slot

Multiple interface connection (MIC): Allows simultaneous data transfer via up to four interfaces, with each interface having its own virtual printer.

### OPTIONS

#### Paper handling

PF-430 Paper feeder (max. 4 units): 250 sheets, 60-120 g/m<sup>2</sup>, A3, B4, A4-R, A4, A5, B5, Letter, Letter-R, Legal, Ledger, Custom (139.7 x 148 mm to 297 x 432 mm)  
PT-430 Paper tray: 250 sheets face-up output tray

#### Memory

Printer memory: 1 DDR SDRAM DIMM slot (64, 128, 256 or 512 MB)

Storage memory: 1 slot for either CompactFlash<sup>®</sup> memory card type 1 (up to 2 GB) for forms, fonts, logos, macro storage or Microdrive<sup>™</sup> (up to 4 GB) for forms, fonts, logos, macro storage as well as document management with eMPS functions such as quick copy, proof and hold, private print and job storage.

1 USB Host Interface (USB 1.1) for USB Flash Memory device supports PDF direct printing

#### Optional interface

IB-21E Network card: 10Base-T/100Base-TX  
IB-11 Serial interface: RS-232C serial interface (max. 115.2 kbps)

### CONSUMABLES

TK-440 Toner-kit: Microfine toner for 15,000 pages with 5% coverage (ISO/IEC 19752)

Capacity of starter toner is 7,500 pages with 5% coverage (ISO/IEC 19752)

MK-440 Maintenance Kit: Due for installation at each 300,000 pages.

### WARRANTY

#### Standard Warranty

2-year onsite warranty as standard.

Kyocera guarantees the drum and developer for 2 years or 300,000 pages (whichever occurs sooner), provided each printer is used, cleaned and maintained in accordance with the service instructions.

#### Extended Warranty Options

ECO-FS-3003: Optional Upgrade to 3<sup>rd</sup> year onsite warranty  
ECO-FS-3004: Optional Upgrade to 4th year onsite warranty

### MODEL CONFIGURATIONS

FS-6950DN

FS-6950DTN (FS-6950DN + PF-430)



### Your Kyocera Business Partner:

#### SYDNEY HEAD OFFICE

6-10 Talavera Road  
North Ryde NSW 2113  
Phone: (02) 9888 9999  
Fax: (02) 9888-9588

#### MELBOURNE OFFICE

Unit 2, 993 North Road  
Murrumbeena VIC 3163  
Phone: (03) 9579 1555  
Fax: (03) 9579 1544

#### BRISBANE OFFICE

Cnr Forbes St & Riverside Dr  
West End QLD 4011  
Phone: (07) 3844 6686  
Fax: (07) 3844 8569

#### PERTH OFFICE

104 Walters Drive  
Osborne Park WA 6017  
Phone: (08) 92019155  
Fax: (08) 92019511

#### ADELAIDE OFFICE

53 Rundle Street  
Kent Town SA 5067  
Phone: (08) 7421 2000  
Fax: (08) 7421 2001

#### CANBERRA OFFICE

Epicorp Centre  
401 Clunies Ross Street  
Acton ACT 2601  
Phone: (02) 6229 1729  
Fax: (02) 6229 1701

#### NEW ZEALAND OFFICE

1-3 Parkhead Place  
Albany New Zealand  
Phone: (649) 4 15 45 17  
Fax: (649) 4 15 45 97



## Free Manuals Download Website

<http://myh66.com>

<http://usermanuals.us>

<http://www.somanuals.com>

<http://www.4manuals.cc>

<http://www.manual-lib.com>

<http://www.404manual.com>

<http://www.luxmanual.com>

<http://aubethermostatmanual.com>

Golf course search by state

<http://golfingnear.com>

Email search by domain

<http://emailbydomain.com>

Auto manuals search

<http://auto.somanuals.com>

TV manuals search

<http://tv.somanuals.com>