

# Modem Setup Guide for the Kyocera 7135 smartphone



**KYOCERA WIRELESS CORP.**  
**10300 CAMPUS POINT DRIVE**  
**SAN DIEGO, CALIFORNIA 92121 U.S.A.**  
Visit us at [www.kyocera-wireless.com](http://www.kyocera-wireless.com)  
**82-K5206-2, Rev. 002**

This manual is based on the production versions of the Kyocera 7135 smartphone. Software changes may have occurred after this printing. Kyocera reserves the right to make changes in technical and product specifications without prior notice. The products and equipment described in this documentation are manufactured under license from QUALCOMM Incorporated under one or more of the following U.S. Patents:

4,901,307	5,056,109	5,099,204	5,101,501	5,103,459	5,107,225	5,109,390	5,193,094	5,228,054
5,257,283	5,265,119	5,267,261	5,267,262	5,280,472	5,283,536	5,289,527	5,307,405	5,309,474
5,337,338	5,339,046	5,341,456	5,383,219	5,392,287	5,396,516	D356,560	5,408,697	5,414,728
5,414,796	5,416,797	5,426,392	5,437,055	D361,065	5,442,322	5,442,627	5,452,473	5,461,639
5,469,115	5,469,471	5,471,497	5,475,870	5,479,475	5,483,696	5,485,486	5,487,175	5,490,165
5,497,395	5,499,280	5,504,773	5,506,865	5,509,015	5,509,035	5,511,067	5,511,073	5,513,176
5,515,177	5,517,323	5,519,761	5,528,593	5,530,928	5,533,011	5,535,239	5,539,531	5,544,196
5,544,223	5,546,459	5,548,812	5,559,881	5,559,865	5,561,618	5,564,083	5,566,000	5,566,206
5,566,357	5,568,483	5,574,773	5,574,987	D375,740	5,576,662	5,577,022	5,577,265	D375,937
5,588,043	D376,804	5,589,756	5,590,069	5,590,406	5,590,408	5,592,548	5,594,718	5,596,570
5,600,754	5,602,834	5,602,833	5,603,096	5,604,459	5,604,730	5,608,722	5,614,806	5,617,060
5,621,752	5,621,784	5,621,853	5,625,876	5,627,857	5,629,955	5,629,975	5,638,412	5,640,414
5,642,398	5,644,591	5,644,596	5,646,991	5,652,814	5,654,979	5,655,220	5,657,420	5,659,569
5,663,807	5,666,122	5,673,259	5,675,581	5,675,644	5,680,395	5,687,229	D386,186	5,689,557
5,691,974	5,692,006	5,696,468	5,697,055	5,703,902	5,704,001	5,708,448	5,710,521	5,710,758
5,710,768	5,710,784	5,715,236	5,715,526	5,722,044	5,722,053	5,722,061	5,722,063	5,724,385
5,727,123	5,729,540	5,732,134	5,732,341	5,734,716	5,737,687	5,737,708	5,742,734	D393,856
5,748,104	5,751,725	5,751,761	5,751,901	5,754,533	5,754,542	5,754,733	5,757,767	5,757,858
5,758,266	5,761,204	5,764,687	5,774,496	5,777,990	5,778,024	5,778,338	5,781,543	5,781,856
5,781,867	5,784,406	5,784,532	5,790,589	5,790,632	5,793,338	D397,110	5,799,005	5,799,254
5,802,105	5,805,648	5,805,843	5,812,036	5,812,094	5,812,097	5,812,538	5,812,607	5,812,651
5,812,938	5,818,871	5,822,318	5,825,253	5,828,348	5,828,661	5,835,065	5,835,847	5,839,052
5,841,806	5,842,124	5,844,784	5,844,885	5,844,899	5,844,985	5,848,063	5,848,099	5,850,612
5,852,421	5,854,565	5,854,786	5,857,147	5,859,612	5,859,838	5,859,840	5,861,844	5,862,471
5,862,474	5,864,760	5,864,763	5,867,527	5,867,763	5,870,427	5,870,431	5,870,674	5,872,481
5,872,774	5,872,775	5,872,823	5,877,942	5,878,036	5,870,631	5,881,053	5,881,368	5,884,157
5,884,193	5,884,196	5,892,178	5,892,758	5,892,774	5,892,816	5,892,916	5,893,035	D407,701
5,898,920	5,903,554	5,903,862	D409,561	5,907,167	5,909,434	5,910,752	5,911,128	5,912,882
D410,893	5,914,950	5,915,235	5,917,708	5,917,811	5,917,812	5,917,837	5,920,284	5,920,834
D411,823	5,923,650	5,923,705	5,926,143	5,926,470	5,926,500	5,926,786	5,926,786	5,930,230
5,930,692	Other patents pending.							

**FCC/IC Notice**

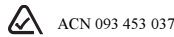
This device complies with part 15 of the FCC Rules. Operation is subject to the following two conditions: (1) This device may not cause harmful interference, and (2) this device must accept any interference received, including interference that may cause undesired operation.

**Caution**

The user is cautioned that changes or modifications not expressly approved by the party responsible for compliance could void the warranty and user's authority to operate the equipment.

**Warning**

Use only Kyocera Wireless Corp. approved accessories with Kyocera Wireless Corp. phones. Use of any unauthorized accessories may be dangerous and will invalidate the phone warranty if the unauthorized accessories cause damage or defect to the phone.



© 2003 Kyocera Wireless Corp. All rights reserved.

Kyocera is a registered trademark of Kyocera Corporation. QCP is a trademark of Kyocera Wireless Corp. QUALCOMM is a registered trademark of QUALCOMM Incorporated. Microsoft, Microsoft Outlook, Pocket PC, and ActiveSync are registered trademarks of Microsoft Corporation. meetingmaker is a registered trademark of ON Technology, Inc. Palm and Palm Connectivity Kit are trademarks of Palm, Inc. HotSync is a registered trademark of Palm, Inc. Mac is a registered trademark of Apple Computer, Inc. All other trademarks are the property of their respective owners.

Printed in the United States of America.

82-K5206-2, Rev. 002

## INTRODUCTION

This guide helps you to set up your Kyocera 7135 on your computer as a Universal Serial Bus (USB) and a serial modem. With your HotSync cradle and drivers installed properly, you can use your Kyocera 7135 smartphone to synchronize with your computer. This will allow you to use your smartphone as a wireless modem. Additional software may be required to connect with your smartphone service provider.

### Why would I use a wireless modem?

Your Kyocera 7135 smartphone provides you with the convenience of a wireless connection wherever you are. When you're on vacation or business travel, it's difficult to connect to the Internet using conventional methods. Many hotels provide a phone jack in their guest rooms to make a 'Dial-Up' connection. Some actually provide an Ethernet jack to connect. Using your Kyocera 7135 smartphone with CDMA technology and a HotSync cradle, you now have the convenience of sending or receiving E-mail, surfing the Web, accessing work files, and more from anywhere you have digital data services.

### What do I need to use my Kyocera 7135 smartphone as a wireless modem?

1. You can use your Kyocera 7135 as a wireless modem by:
  - placing the phone in its cradle and connecting the cradle to your computer's USB, *or*
  - placing the phone in its cradle and connecting the cradle to your computer's serial port, *or*
  - using the optional USB data cable, *or*
  - using the optional Serial Data cable.
2. You need to install modem drivers from the CD on your computer so your Kyocera phone is a modem choice. Check with your smartphone service provider for additional requirements.

## INSTALLING THE USB DRIVERS

**Important:** Install the USB drivers on this CD before you connect your HotSync cradle to your computer. Connecting your cradle to your computer before installing the drivers may cause the drivers to be installed incorrectly. If you are installing the Kyocera Wireless USB modem on a computer with a Windows 2000 operating system, the following may apply:

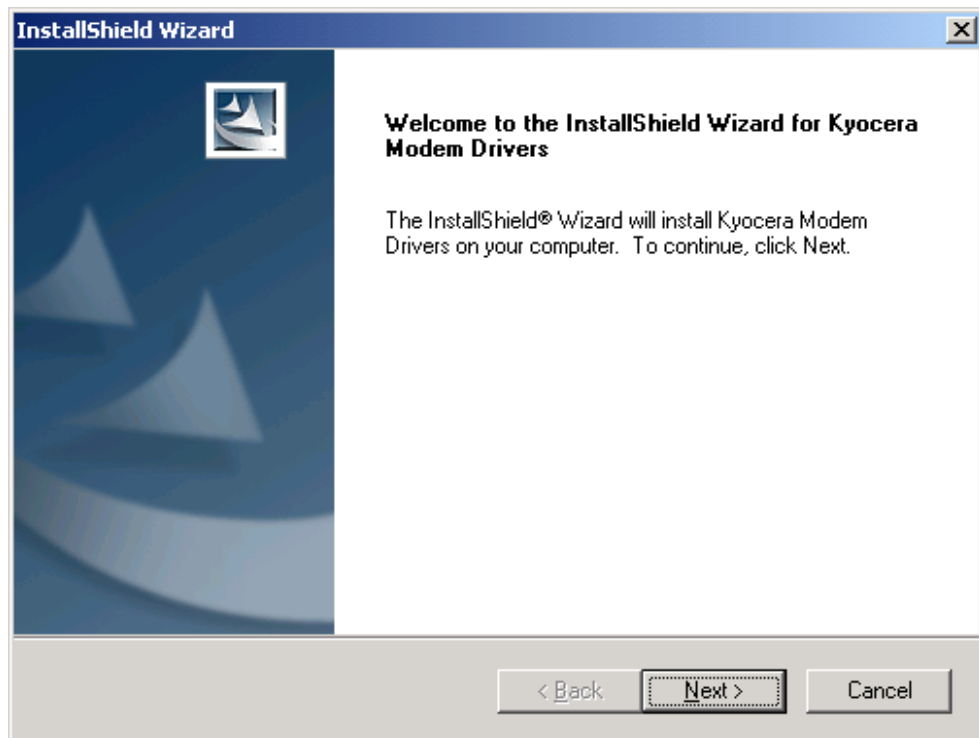
- If the USB drivers/modem is already installed, attempting to install again may remove the modem. If you have already installed these USB drivers from the CD-ROM that came with your phone, and you are using the phone as a wireless modem with the phone in the sync cradle, it is not necessary to install these drivers again.
- If you run the Install Wizard, you will see: **Confirm uninstall. Do you want to completely remove the selected application and all of its components?** Select **Cancel** if you do not wish to remove the application. If you mistakenly remove the application, simply install it again.

During installation, modem drivers, also referred to as INF files, are automatically copied to your computer. Kyocera Wireless USB Modem will automatically be added to your modem list.

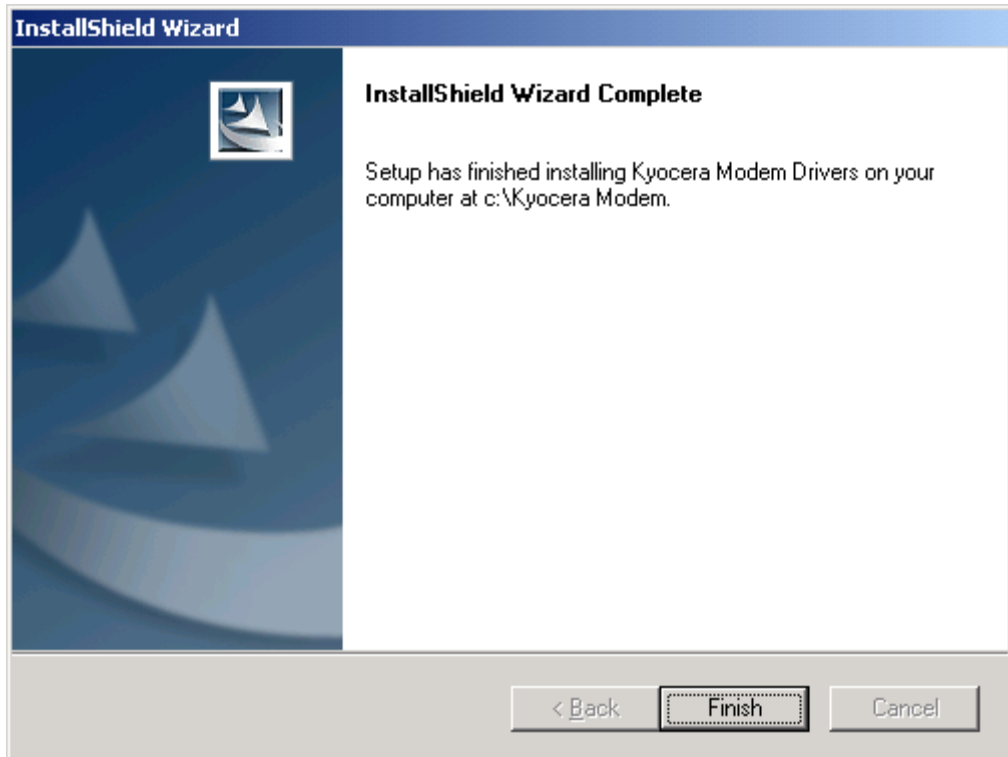
Insert the CD into your computer's CD-ROM drive (usually D:\ or E:\). Select **Install Palm Desktop**, then select **Install Modem Drivers**.

You will need a Kyocera HotSync cradle to connect your smartphone to your computer for use as a wireless modem. The Kyocera USB data cable is designed to connect your Kyocera 7135 smartphone to your computer through a USB port.

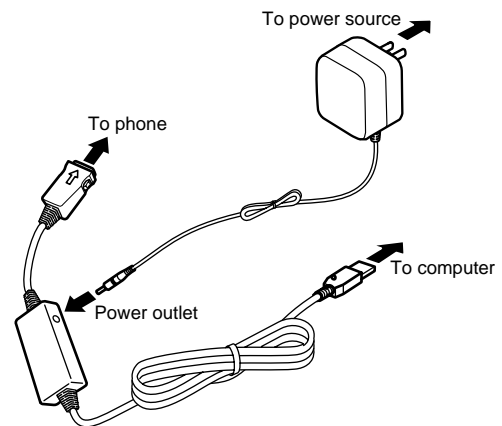
1. Place the smartphone desktop CD in your computer's CD-ROM and click on **Install Modem Drivers**. The **Install Shield Wizard** will appear on your computer screen.



- The Modem driver files will load quickly to your computer. When complete, click **Finish**.



- Connect the HotSync cradle to any available USB port on your computer.
- Place your Kyocera 7135 in the cradle.
- Go to the Palm Launcher screen and click on the FaxModem icon. Your computer instantly starts detecting the Kyocera 7135 as a Modem.
- Refer to Helpful hints to verify the installed Modem.

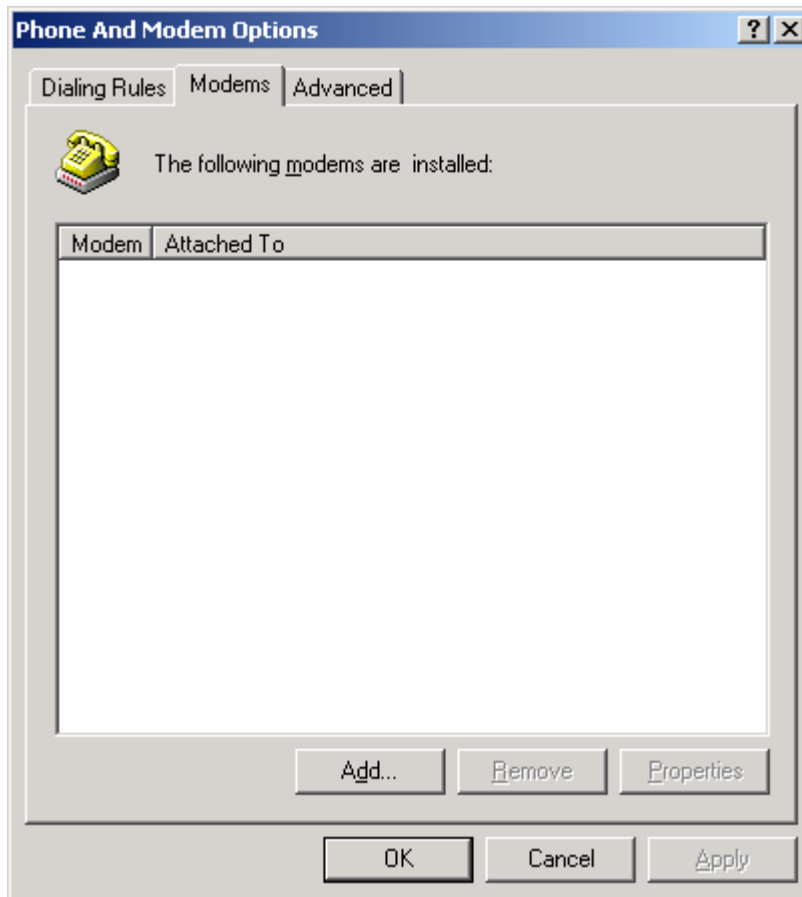


**Note:** It is not required, but you can charge the phone while transferring data to avoid data loss due to a low battery. The data cable has a power outlet that can be used to charge the phone while the phone is connected to the data cable (shown above).

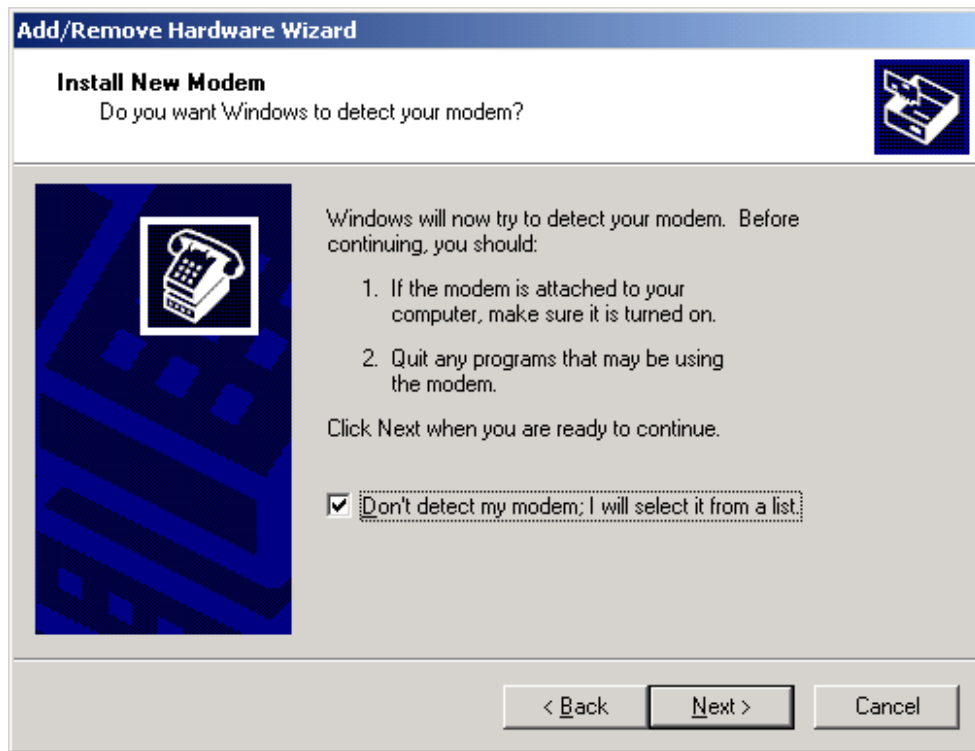
## SERIAL MODEM SETUP

The following steps describe how to set up your Kyocera 7135 as a Serial Modem for the typical Windows 2000 environment.

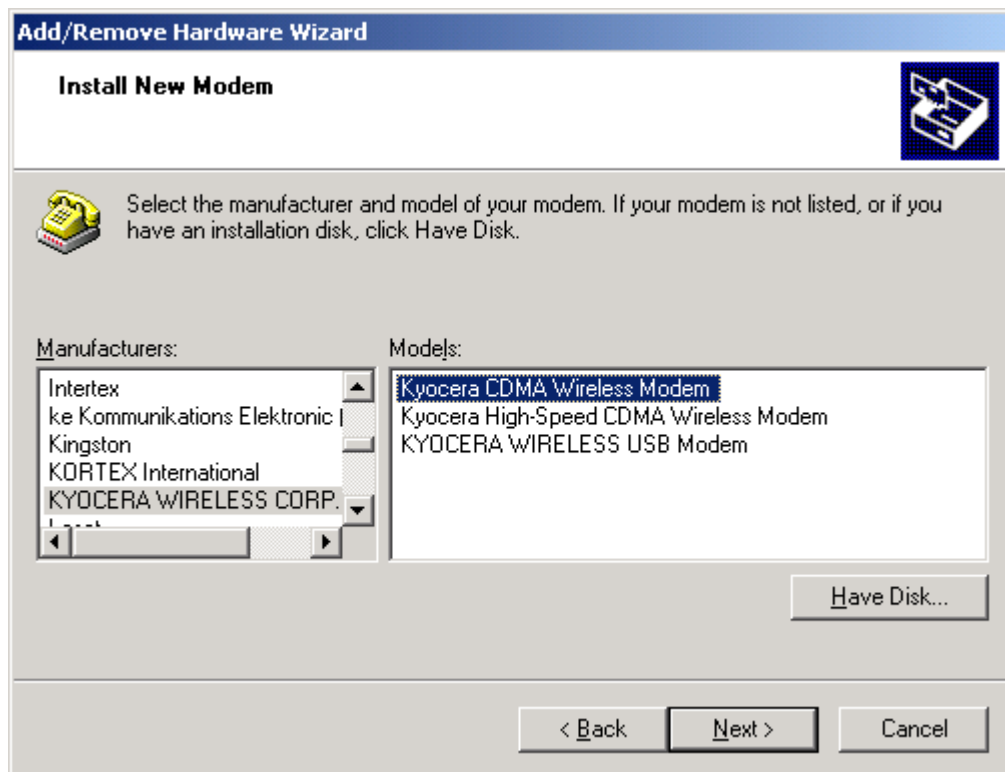
1. Go to the **Control Panel**.
2. Select **Phone and Modem Options**.
3. Click on the **Modems** tab.
4. Click **Add...**



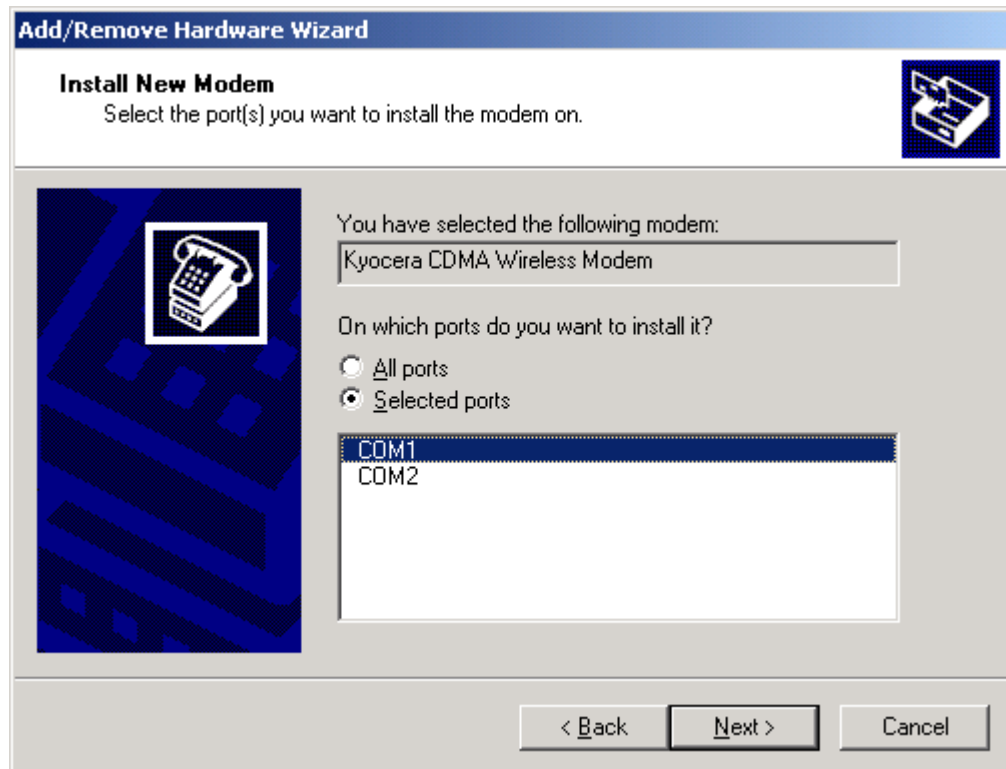
The Install New Modem window appears.



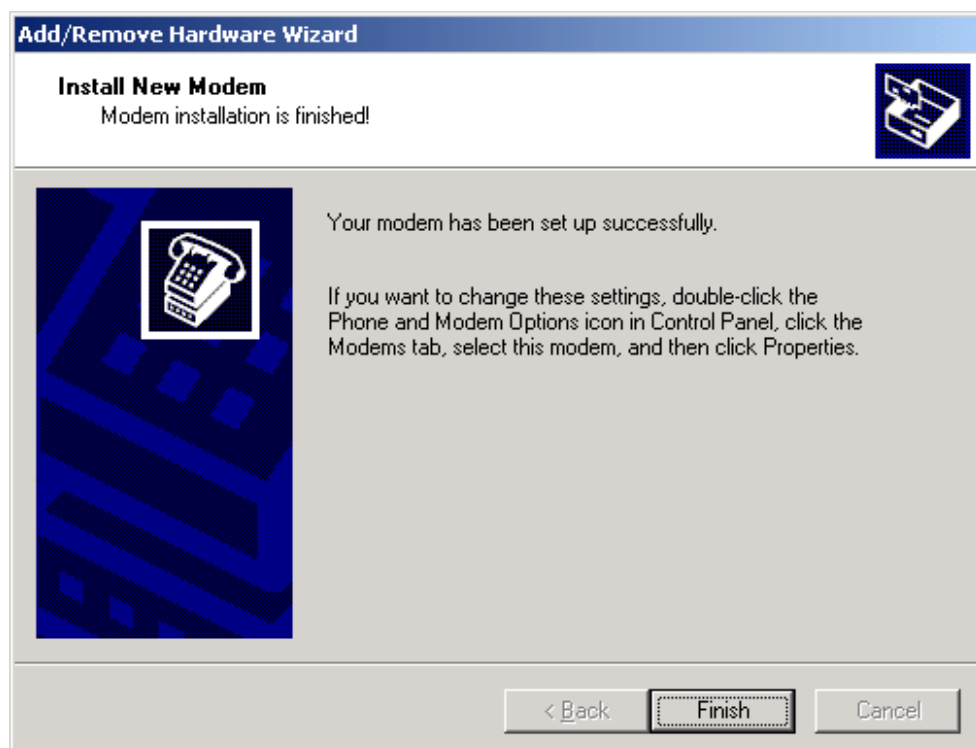
5. If it is not already selected, select “Don’t detect my modem; I will select it from a list” and click **Next**. A list of manufacturers and models appears.



6. Select the Kyocera modem from the Manufacturers list and click **Next**. You are then asked to select the port(s) you want to install the modem on.

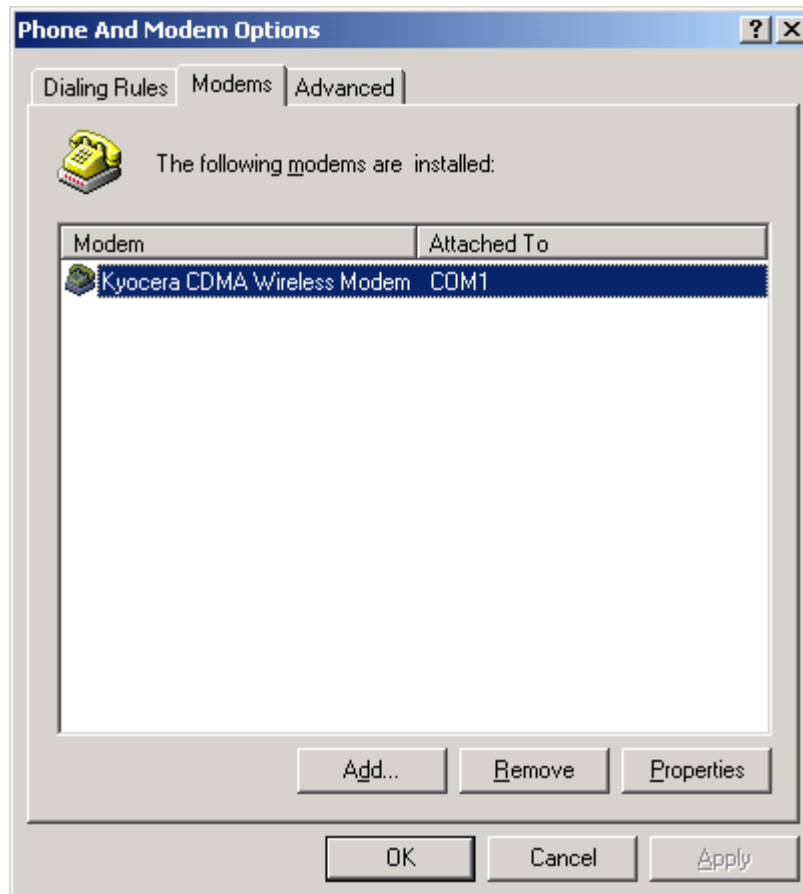


7. Select a COM port on which you want to install the device as a Serial Modem and click **Next**. You will be informed when the Kyocera Modem has been successfully installed.





8. You will then see a Windows alert for “Digital Signature Not Found”. Please ignore this and click **Yes** to continue.
9. Click **Finish**.
10. You should now be able to see the Kyocera Modem listed under Modems tab. Click **OK**.



## Helpful hints

- Your computer may not ‘recognize’ your USB cable until you perform your first synchronization. Follow the on-screen instructions.
- Install the USB drivers **before** connecting your USB cable to your computer. If you connect the USB cable to your computer before installing the drivers, it may cause the drivers to be installed in an incorrect location on your computer.
- **Always** reboot your computer after installing USB drivers, adding a modem, or creating a dial-up networking connection.
- Make sure the phone is on and the HotSync cradle is firmly connected.
- **Note:** The FaxModem **MUST** be running on Kyocera 7135 for the verification of the installed drivers and the unistallation of the device.

## Verifying the installed driver from Windows 98

1. From your desktop, right-click on **My Computer** and choose **Properties**.
2. Select **Device Manager** and select **View devices by type**.

In the Modem section, a Kyocera device should appear. If not, the device has not been successfully installed.

## Verifying the installed driver from Windows 2000

1. From your desktop, right-click on **My Computer** and choose **Properties**.
2. Select **Hardware** and then **Device Manager**.

In the Modem section, a Kyocera device should appear. If not, the device has not been successfully installed.

## Uninstallation of the driver from Windows 98

1. Keep your device connected to the Windows 98 system.
2. Go to the Device Manager, highlight your USB device and click **Remove**.
3. Disconnect your USB device.
4. Go to C:\Windows\inf\directory and remove **drvdata.bin** and **drvidx.bin**.
5. Go to C:\Windows\inf\Other and remove **KYOCERA WIRELESS CORP.mdmkwc.inf** and **KYOCERA WIRELESS CORP.kwcmdm98.inf**.

## Uninstallation of the driver from Windows 2000

1. Keep your device connected to the Windows 2000 system.
2. Go to the modem section of the Device Manager and highlight the USB modem.
3. Go to the **Action** menu and highlight **Uninstall...**
4. Disconnect your USB device.
5. Go to C:\Windows\inf\directory and browse through the oem\*.inf files and find the one belonging to the USB device.
6. Remove the OEM's **PNF** and **INF** files.

The standard Microsoft USB Driver binary <usbser.sys> is required on Host PCs (Windows 98 and Windows 2000) for successful usage of USB. If this file is missing, it is likely that a Windows error message, "Invalid Driver" will appear. This can be found on the Windows 98 SE CD.

For more information, please refer to:

<http://www.microsoft.com/hwdev/resources/hwservices/WDMmodem.asp>.

## Getting help

This setup guide provides basic information on installing USB drivers and a USB cable for use with your Kyocera 7135 smartphone. Review the **Helpful Hints** section above. If you do not find the information you are looking for, you may need to refer to your computer's user manual for help setting up your modem connections, etc. Please read your Kyocera 7135 smartphone user guide to learn about the features and functions of your phone.

For further assistance, contact the Kyocera Wireless Corp. Customer Care Center:

- Phone: (800) 349-4478 (toll-free in the U.S.A. and Canada only) or (858) 882-1401
- E-mail: [phone-help@kyocera-wireless.com](mailto:phone-help@kyocera-wireless.com)
- Web site: [www.kyocera-wireless.com](http://www.kyocera-wireless.com)
- Kyocera Wireless Corp., 10300 Campus Point Drive, San Diego, CA 92121 U.S.A.



## Free Manuals Download Website

<http://myh66.com>

<http://usermanuals.us>

<http://www.somanuals.com>

<http://www.4manuals.cc>

<http://www.manual-lib.com>

<http://www.404manual.com>

<http://www.luxmanual.com>

<http://aubethermostatmanual.com>

Golf course search by state

<http://golfingnear.com>

Email search by domain

<http://emailbydomain.com>

Auto manuals search

<http://auto.somanuals.com>

TV manuals search

<http://tv.somanuals.com>