



Serious Business. Seamless Solutions.

# M<sup>KYO</sup>MANAGE

## 5735km & 5755km IPDS/SCS PRINTER GATEWAY

The I-O 5735km and 5755km Printer Gateways are high speed Ethernet-in, Ethernet-out print servers that convert native IBM host print jobs to PCL 5e, allowing the jobs to be printed on Kyocera printers and multifunctional products (MFP's). The 5735km supports a single Kyocera printer and is designed for high-volume, high speed, printing applications. The 5755km will support up to three Kyocera printers and MFP's in light to moderate host printing applications. Both products deliver IBM AFP/IPDS and SCS printing via Ethernet, and provide the control and printer feedback found in an IBM printing environment. In addition to IBM host connectivity, the 5735km and 5755km support of all Kyocera's finishing features.

▶ **HIGH SPEED PRINTING**

Attached anywhere on the LAN, the 5735km/5755km supports 10/100 Mbps Ethernet LAN environments. Without the bottleneck of a slow parallel port, I-O Gateways are capable of supporting printer speeds that exceed 100 pages per minute.

▶ **FINISHING SUPPORT**

Kyocera's finishing features are supported by the 5735km/5755km. Finishing features such as duplexing, collating, stapling or hole-punching, can be utilized in a host environment.

▶ **RELIABLE IBM HOST PRINTING**

The I-O Gateway offers the same reliable, full-function, IBM host printing and control found with direct attached legacy twinax or coax printers. With the 5735km/5755km, IBM host print jobs are monitored throughout the complete job life, ensuring accurate output.

The I-O Gateway provides bi-directional communication between the printer and the IBM host, allowing error reporting and page range printing.

▶ **EASE OF CONFIGURATION**

Whether selecting TCP/IP or SNA, configuration is made easy through the use of I-O's menu-based Configuration Utility.



## Features & Benefits

### AFP/IPDS & SCS PRINTING

IBM host print jobs can be printed on a Kyocera printer or MFP in an Ethernet environment.

### HIGH SPEED PRINTING, 100+ PPM

Data conversion is accomplished at the 5735km/5755km and sent to the Kyocera printer or MFP via the Ethernet LAN. The 5735km/5755km supports high-speed printing featured in Kyocera printers and MFP's.

### I-O CUSTOMIZED FINISHING COMANDS

Kyocera finishing features such as duplexing, collating, stapling, folding, hole-punching, etc. can be utilized in a host environment.

### FULL IBM HOST CONTROL OF PRINT JOBS

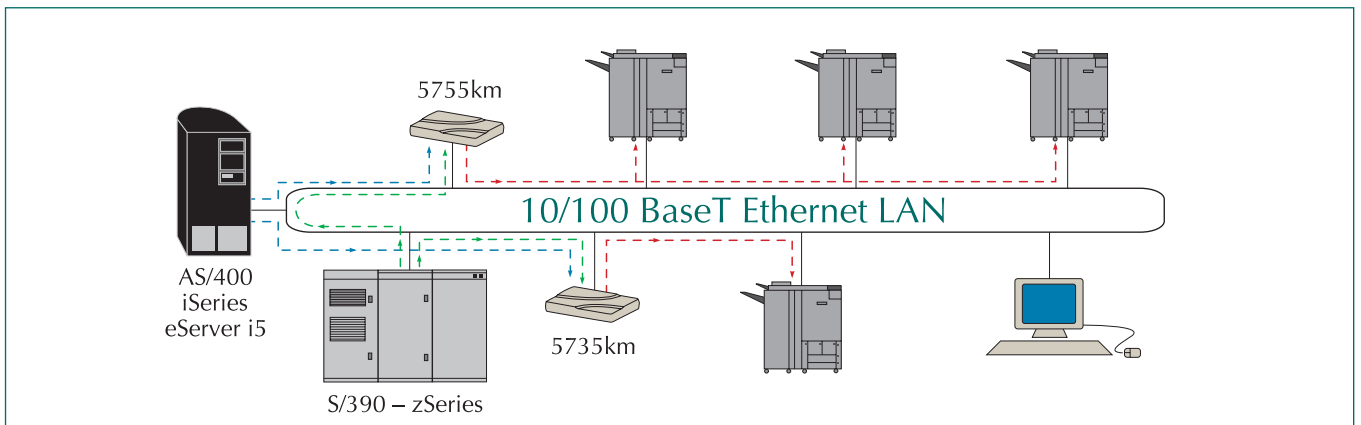
The 5735km/5755km provides bi-directional communication between the host and the printer, via port 9100 and PJI commands.

### REMOTE PRINTING

The Kyocera printer or MFP can be attached locally or remotely via a WAN or VPN network – The Kyocera printer does not need to be next to the 5735km/5755km.

### I-O'S AWARD WINNING PRINTER EMULATIONS

All AFP/IPDS and SCS functions such as duplex, page offset, COR, fonts, and barcode, are fully supported by the 5735km/5755km.



## Technical Specifications

### FOR AS/400, ISERIES, ESERVER I5

**Protocols:** TCP/IP (PPR/PPD, TN5250e, LPR/LPD), SNA, (APPC), AnyNet (SNA over TCP/IP)  
**IPDS Emulations:** IBM 4028 AS1, 3812-2, 3816-1D/S, includes 4312/17 font support  
**SCS Emulations:** IBM 3812-1, 4214, 5224, 5225, 5256  
**IPDS Towers:** Supports all towers  
**System Requirements:** OS/400 Release 3.1 or higher

### FOR S/390 – ZSERIES

**Protocols:** TCP/IP (PPR/PPD, TN5250e, LPR/LPD), SNA, (APPC), AnyNet (SNA over TCP/IP)  
**IPDS Emulations:** IBM 4028 AS1, 3812-2, 3816-1D/S, includes 4312/17 font support  
**SCS Emulations:** IBM 3812-1, 4214, 5224, 5225, 5256  
**IPDS Towers:** Supports all towers  
**System Requirements:** OS/400 Release 3.1 or higher

### FOR LAN SYSTEMS

**Protocols:** TCP/IP (LPR/LPD), IPX/SPX, NetBIOS, I-O DirectPort™ (Windows 9x Peer-to-Peer)  
**Supported LAN Hosts:** Novell, Windows, Unix

### FOR PRINTERS

**Ethernet Connection:** Port 9100, PCL 3/5e, Auto-sensing 10/100 BaseT  
**Parallel Connection:** Dot-matrix (SCS only), Laser (IPDS/SCS)

### GENERAL

**5735km Supports 1 Printer**  
**5755km Supports Up To 3 Printers**  
**Printer Ports:** One IEEE 1284 bi-directional Centronics parallel port  
**Power Supply:** 100-240V auto-switching (IEC)  
**Configuration:** I-O Configuration Utility requires a Windows 95 or higher PC

### For Product Sales:



Specifications and design are subject to change without notice.

Kyocera Mita America, Inc.  
 225 Sand Road, PO Box 40008  
 Fairfield, NJ 07004-0008, USA

©2005 Kyocera Mita America, Inc.

[www.kyoceramita.com](http://www.kyoceramita.com)

### For Product Support:



190 North 220 West Suite 100  
 Salt Lake City, Utah 8116  
 801.973.6767  
[www.iocorp.com](http://www.iocorp.com)

## Free Manuals Download Website

<http://myh66.com>

<http://usermanuals.us>

<http://www.somanuals.com>

<http://www.4manuals.cc>

<http://www.manual-lib.com>

<http://www.404manual.com>

<http://www.luxmanual.com>

<http://aubethermostatmanual.com>

Golf course search by state

<http://golfingnear.com>

Email search by domain

<http://emailbydomain.com>

Auto manuals search

<http://auto.somanuals.com>

TV manuals search

<http://tv.somanuals.com>