

Table of Contents

Health and Safety Precautions	3
General Use Precautions	3
1.Introduction	4
1.1. Box Content	5
1.2. Minimum System Requirements	6
1.3. Views of the LaCie Network Space.....	7
2.Setting Up Your LaCie Network Space	8
2.1. Turn the Drive On	9
2.2. Connect the Ethernet Cable	10
2.3. Connect with LaCie Network Assistant.....	11
2.4. Configuring the LaCie Network Space on a Network Without a DHCP Server.....	13
2.5. Disconnecting the LaCie Network Space (Ethernet Connection)	14
3.Accessing and Managing Files.....	15
3.1. Accessing Shared Folders	15
3.2. Connecting External USB Hard Disks	17
3.3. FTP Access to Shares	17
4.Administering Your LaCie Network Space	18
4.1. Accessing the NAS Administration Page	19
4.2. Configuration	20
4.2.1. Machine Name	20
4.2.2. Windows Workgroup	21
4.2.3. Date and Time	21
4.2.4. Language	22
4.2.5. Network Configuration.....	22
4.2.6. Edit Accounts	23
4.2.7. Blue Light.....	24
4.3. Backup	25
4.4. Disk	26
4.4.1. Formatting the LaCie Network Space Disk	26
4.4.2. Safely Removing an Attached External Disk	27
4.5. Support.....	28
4.5.1. Enabling FTP Service.....	28
4.5.2. Media Server.....	28
4.5.3. System Log.....	29
4.5.4. Restarting the Machine.....	29
5.Troubleshooting	30
6.Contacting Customer Support.....	32
6.1. LaCie Technical Support Contacts	33
7.Warranty Information.....	34

Copyrights

Copyright © 2008 LaCie. All rights reserved. No part of this publication may be reproduced, stored in a retrieval system, or transmitted in any form or by any means, electronic, mechanical, photocopying, recording or otherwise, without the prior written consent of LaCie.

Trademarks

Apple, Mac, and Macintosh are registered trademarks of Apple Computer, Inc. Microsoft, Windows 98, Windows 98 SE, Windows 2000, Windows Millennium Edition, Windows XP and Windows Vista are registered trademarks of Microsoft Corporation. Other trademarks mentioned in this manual are the property of their respective owners.

Changes

The material in this document is for information only and subject to change without notice. While reasonable efforts have been made in the preparation of this document to assure its accuracy, LaCie assumes no liability resulting from errors or omissions in this document, or from the use of the information contained herein. LaCie reserves the right to make changes or revisions in the product design or the product manual without reservation and without obligation to notify any person of such revisions and changes.

Canada Compliance Statement

This Class A digital apparatus meets all requirements of the Canadian Interference-Causing Equipment Regulations.

FCC Statement



This device complies with Part 15 of the FCC Rules. Operation is subject to the following conditions:

- ◆ The devices may not cause harmful interference
- ◆ The devices must accept any interference received, including interference that may cause undesired operation.

NOTE: This equipment has been tested and found to comply with the limits for a Class B digital device, pursuant to Part 15 of the FCC Rules. These limits are designed to provide reasonable protection against harmful interference in a residential installation. This equipment generates, uses and can radiate radio frequency energy and, if not installed and used in accordance with the instructions, may cause harmful interference to radio communications. However, there is no guarantee that interference will not occur in a particular installation. If this equipment does cause harmful interference to radio or television reception, which can be determined by turning the equipment off and on, the user is encouraged to try and correct the interference by one or more of the following measures:

- ◆ Reorient or relocate the receiving antenna.
- ◆ Increase the separation between the equipment and receiver.
- ◆ Connect the equipment into an outlet on a circuit different from that to which the receiver is connected.
- ◆ Consult the dealer or an experienced radio/TV technician for help.
- ◆ Modifications to this product not authorized by LaCie could void the FCC & Industry Canada regulations and negate your authority to operate the product.

CE Manufacturer's Declaration for CE Certification

We, LaCie, solemnly declare that this product conforms to the following European standards: Class B EN60950, EN55022, EN50082-1, EN61000-3-2

With reference to the following conditions: 73/23/EEC Low Voltage Directive; 89/336/EEC EMC Directive

ROHS Compliance

This product is ROHS compliant (European Directive 2002/95/EC on the Restriction of Hazardous Substances).



This symbol on the product or on its packaging indicates that this product must not be disposed of with your other household waste. Instead, it is your responsibility to dispose of your waste equipment by handing it over to a designed collection point for the recycling of waste electrical and electronic equipment. The separate collection and recycling of your waste equipment at the time of disposal will help to conserve natural resources and ensure that it is recycled in a manner that protects human health and the environment. For more information about where you can drop off your waste equipment for recycling, please contact your local city office, your household waste disposal service, or the shop where you purchased the product.

CAUTION: Modifications not authorized by the manufacturer may void the user's authority to operate this device.

CAUTION: A shielded-type power cord is required in order to meet FCC emission limits and also to prevent interference to the nearby radio and television reception. It is essential that only the supplied power cord be used.

Health and Safety Precautions

- ◆ Only qualified persons are authorized to carry out maintenance on this device.
- ◆ Read this User Manual carefully and follow the correct procedure when setting up the device.
- ◆ Do not open your LaCie Network Space or attempt to disassemble or modify it. Never insert any metallic object into the drive to avoid any risk of electrical shock, fire, short-circuiting or dangerous emissions. Your LaCie Network Space contains no user-serviceable parts. If it appears to be malfunctioning, have it inspected by a qualified LaCie Technical Support representative.
- ◆ Never expose your device to rain, or use it near water, or in damp or wet conditions. Never place objects containing liquids on the LaCie Network Space, as they may spill into its openings. Doing so increases the risk of electrical shock, short-circuiting, fire

or personal injury.

- ◆ Make sure that the computer and LaCie Network Space are electrically grounded. If the devices are not grounded, there is an increased risk of electrical shock. Power requirements 100-240 V~, X.x A, 60-50 Hz, (Supply voltage fluctuations not exceeding $\pm 10\%$ of the nominal, transient over-voltages according to over-voltage category II).

General Use Precautions

- ◆ Do not expose the LaCie Network Space to temperatures outside the range of 5° C to 35° C (41° F to 95° F); or to operational humidity beyond 5-80%, non-condensing, or non-operating humidity beyond 10-90%, non-condensing. Doing so may damage the LaCie Network Space or disfigure its casing. Avoid placing your LaCie Network Space near a source of heat or exposing it to sunlight (even through a window). Inversely, placing your LaCie Network Space in an environment that is too cold or humid may damage the unit. Because of heat issues, LaCie recommends that users do not stack more than two LaCie disks together. When stacking two disks, environment temperature should not exceed 30°C (86°F).
- ◆ Always unplug the LaCie Network Space from the electrical outlet if there is a risk of lightning or if it will be unused for an extended period of time. Otherwise, there is an increased risk of electrical shock, short-circuiting or fire.
- ◆ Use only the power supply shipped with the device.
- ◆ Do not use the LaCie Network Space near other electrical appliances such as televisions or radios. Doing so may cause interference which will adversely affect the operation of the other products.
- ◆ Do not place the LaCie Network Space near sources of magnetic interference, such as computer displays, televisions or speakers. Magnetic interference can affect the operation and stability of your LaCie Network Space. Do not place heavy objects on top of the LaCie Network Space or use excessive force on it.
- ◆ Never use excessive force on your LaCie Network Space. If you detect a problem, see the Troubleshooting section in this manual.



IMPORTANT INFO: Any loss, corruption or destruction of data while using a LaCie drive is the sole responsibility of the user, and under no circumstances will LaCie be held liable for the recovery or restoration of this data. To help prevent the loss of your data, LaCie highly recommends that you keep **TWO** copies of your data; one copy on your external hard disk, for instance, and a second copy either on your internal hard disk, another external hard disk or some other form of removable storage media. LaCie offers a complete line of CD and DVD drives. If you would like more information on backup, please refer to our website.



IMPORTANT INFO: 1GB = 1,000,000,000 bytes. 1TB = 1,000,000,000,000 bytes. Once formatted, the actual available storage capacity varies depending on operating environment (typically 10-15% less).

1. Introduction

Congratulations on your purchase of a LaCie Network Space, Design by Neil Poulton. Designed to satisfy the data sharing and backup needs of home users, the LaCie Network Space sets up quickly and has easy-to-use browser-based administration.

Sharp Design

The clean lines, glossy black finish and cool blue glow of the LaCie Network Space are equally at home in the office or nestled in with an entertainment center. The USB expansion port is located in the front for easy access and cooling vents on the underside ensure long-lasting reliability and quiet operation.

Media Server

As soon as it is connected to your network, your LaCie Network Space can share your media files with compatible UPnP AV devices, including computers using iTunes. Just drag media files into the openshare folder and enjoy your media on your network.

Easy Access & Administration

The new user-friendly LaCie Network Assistant (included) makes setup simple and enables you to access and configure the LaCie Network Space or other LaCie drives on your network. The LaCie Network Space is compatible with Mac®, Windows® and Linux machines, making it easy for anyone on the network to connect. Browser-based administration pages are straight-forward and easy to understand.

Quick Links

Click a topic:

- ◆ [Setting Up Your LaCie Network Space](#)
- ◆ [Accessing and Managing Files](#)
- ◆ [Administering Your LaCie Network Space](#)
- ◆ [Troubleshooting](#)



1.1. Box Content

Your package contains the LaCie Network Space and an accessories box containing items 2-5, listed below:

1. LaCie Network Space
2. Ethernet cable
3. Power supply
4. Utilities CD-ROM
5. Quick Install Guide



IMPORTANT INFO: Please save your packaging. In the event that the LaCie Network Space should need to be repaired or serviced, it must be returned in its original packaging.



1.2. Minimum System Requirements



Windows Users

- ◆ Windows 2000, Windows XP (SP1 & SP2) or Windows Vista
- ◆ CD-ROM drive
- ◆ Ethernet router
- ◆ Web browser (Internet Explorer®, Safari™, Firefox™, Opera)



Mac Users

- ◆ Mac OS X 10.3 or later
- ◆ CD-ROM drive
- ◆ Ethernet router
- ◆ Web browser (Safari™, Firefox™, Opera)



Linux Users

- ◆ Linux 2.4 or later
- ◆ CD-ROM drive
- ◆ Ethernet router
- ◆ Web browser (Firefox™, Opera, Konqueror)



IMPORTANT INFO: The LaCie Network Space's performance can be affected by such external forces as network activity, hardware, distance and setup.



IMPORTANT INFO: For optimal performance, use a Gigabit Ethernet router and a Gigabit Ethernet board in your host computer.

1.3. Views of the LaCie Network Space

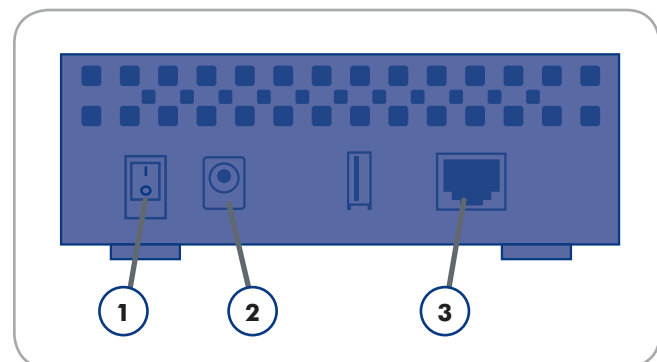
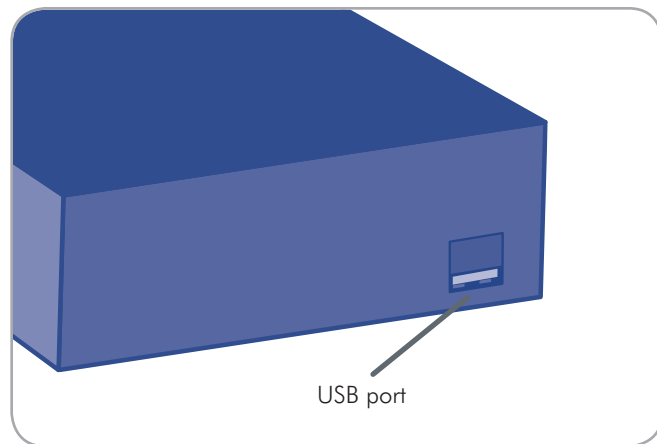
Front View

USB Expansion and Backup Port

The USB port on the front of the LaCie Network Space is used to connect another external USB hard drive or USB key. Using the Backup menu on the administration page, you can to back up shares on your LaCie Network Space to the external disk or import data to the LaCie Network Space external hard disk. It is also possible to use the LaCie Network Space to back up an external USB hard drive. Connected hard disks are accessed similarly to shared folders. See sections [3.2. Connecting External USB Hard Disks](#) and [4.3. Backup](#) for more information.



IMPORTANT INFO: Do not connect the LaCie Network Space directly to your computer via the USB port. The USB port is intended only for connection of other USB storage devices.



Rear View

1. Power switch
2. Power input connection
3. Ethernet port

2. Setting Up Your LaCie Network Space

Follow these steps to getting your LaCie Network Space up and running:

Step 1 – Section [2.1. Turn the Drive On](#)

Step 2 – Section [2.2. Connect the Ethernet Cable](#)

Step 3 – Section [2.3. Connect with LaCie Network Assistant](#)

2.1. Turn the Drive On

The power supply kit is composed of two cables: one cable (A) connects to the LaCie drive; and the other cable (B) connects to a power outlet, such as a wall outlet or a surge protector.

1. Connect Cable **A** to the LaCie Network Space.
2. Connect Cable **B** to the power supply brick (**C**).
3. Connect Cable **B** to a surge protector or wall outlet.
4. Turn on the drive by moving the power switch on the back of the drive to the "on" position.

The LaCie Network Space system may take up to 30 seconds to boot up.

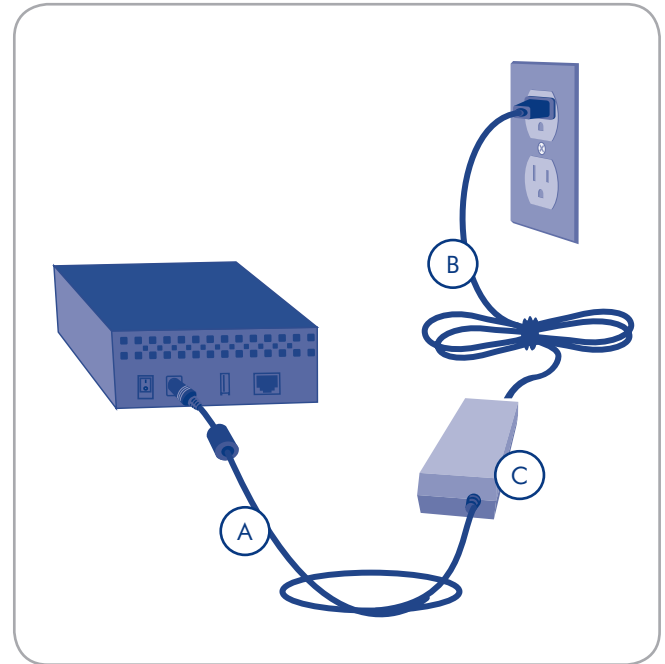


CAUTION: Only use the AC adapter supplied with your specific LaCie device. Do not use a power supply from another LaCie device or another manufacturer. Using any other power cable or power supply may cause damage to the device and void your warranty.

Always remove the AC adapter before transporting your LaCie drive. Failure to remove the adapter may result in damage to your drive and will void your warranty.



TECHNICAL NOTE: You may use your LaCie drive when in a foreign country thanks to its 100-240 Volt power supply. To be able to use this feature, you may need to purchase an appropriate adapter or cord. LaCie accepts no responsibility for any damage to the drive resulting from the use of an inappropriate adapter. Using an adapter other than one authorized by LaCie will void your warranty.



2.2. Connect the Ethernet Cable

Unlike regular desktop hard drives, the LaCie Network Space is only accessible when attached to your network with the Ethernet cable and does not connect directly to your computer with a USB cable.

To connect the Ethernet cable:

1. Turn the drive on. See [2.1. Turn the Drive On.](#)
2. Connect the Ethernet cable to the Ethernet port on the back of the LaCie Network Space.
3. Connect the other end of the Ethernet cable into an available Ethernet “out” port on your router or hub (refer to your router or hub’s documentation if necessary). Allow a few moments for your network to recognize the drive.

Now move on to step 3, section [2.3. Connect with LaCie Network Assistant.](#)

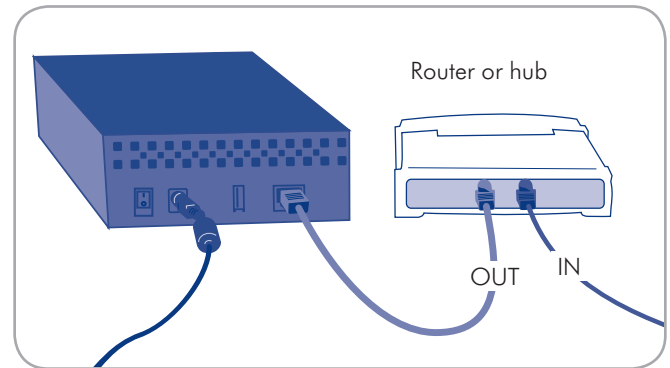


Figure 2.2



IMPORTANT INFO: Do not connect the LaCie Network Space directly to your computer via the USB port. The USB port is intended only for connection of other USB storage devices.

Gigabit Ethernet Cables And Connectors

The Ethernet cable used to connect your LaCie Network Space to your network device looks like this:



The ends of the Ethernet cable are the same and either end can be connected to the LaCie Network Space or your router.

2.3. Connect with LaCie Network Assistant

LaCie Network Assistant detects all network attached storage devices on your network and gives you easy ways to connect to or configure them.

Once installed and running, Network Assistant will appear in your task bar (Windows users, Fig. 2.3-A) or in the menu bar (Mac users, Fig. 2.3-B) and automatically search for storage devices on your network. When a new device is found, an info bubble containing the name of the device will appear.

When Network Assistant finds your LaCie Network Space, you can connect to any of the shares on the LaCie Network Space, log in to the NAS administration page, or configure the LaCie Network Space's network settings, all from the Network Assistant menu.

Install LaCie Network Assistant:

1. Insert the LaCie Network Space CD-ROM into your computer's CD-ROM drive.
2. Windows users, the CD should appear in My Computer. Mac users, the CD should appear on the desktop. Double-click the CD icon, then double-click "LaCie Network Assistant Setup".
3. Follow the Wizard to complete installation.

(continued on next page)

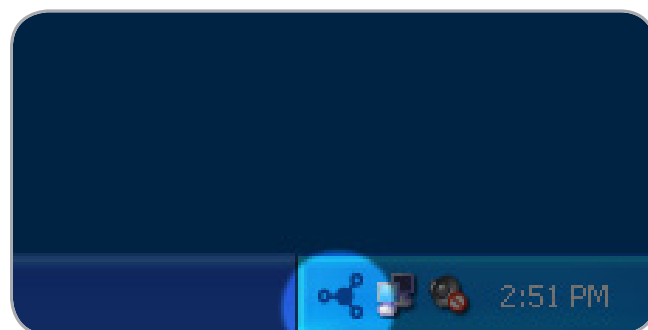
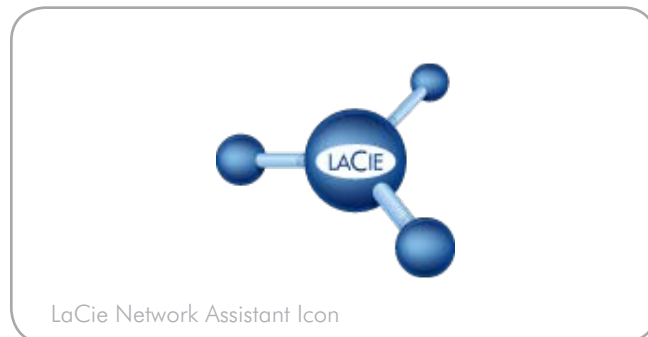


Figure 2.3-A

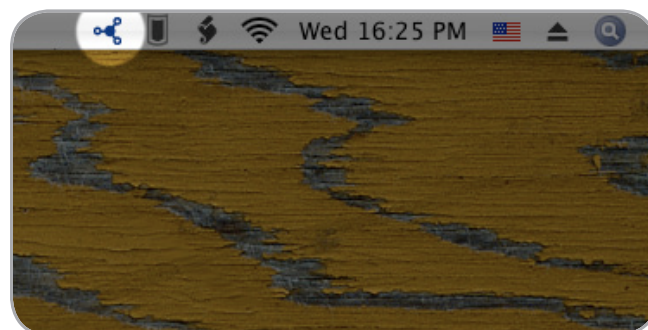


Figure 2.3-B

Connect to the LaCie Network Space:

Windows Users

1. Select LaCie Network Assistant in Start/Programs. An Network Assistant icon will appear in the system tray (Fig. 2.3-C) and Network Assistant will automatically detect your LaCie Network Space and any other storage devices on your network (Fig. 2.3-D).
2. Click on the icon in the system tray and select **Web access...** from the LaCie Network Space sub-menu. The LaCie Network Space administration page will open in your default browser.
3. To log in to LaCie Network Space administration, enter:

Login: **admin**

Password: **admin**



NOTE: This password can be changed from the NAS Administration page.

4. Click **Log on**.

Continue to section [4. Administering Your LaCie Network Space](#).

Mac Users

1. Select LaCie Network Assistant in your Applications folder. An Network Assistant icon will appear in the menu bar and the Assistant will automatically detect your LaCie Network Space and any other LaCie storage devices on your network.
2. Click on the icon in the menu bar and select **Web access...** from the LaCie Network Space sub-menu. The LaCie Network Space administration page will open in your default browser.
3. To log in to LaCie Network Space administration (Fig. 2.3-E), enter:

Login: **admin**

Password: **admin**



NOTE: This password can be changed from the NAS Administration page.

4. Click **Log on**.

Continue to section [4. Administering Your LaCie Network Space](#).

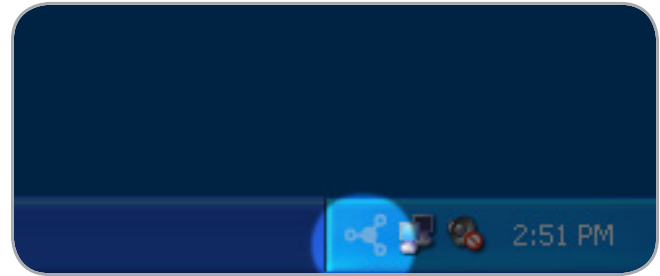


Figure 2.3-C

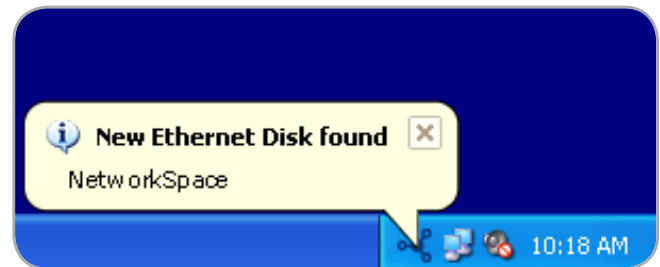


Figure 2.3-D

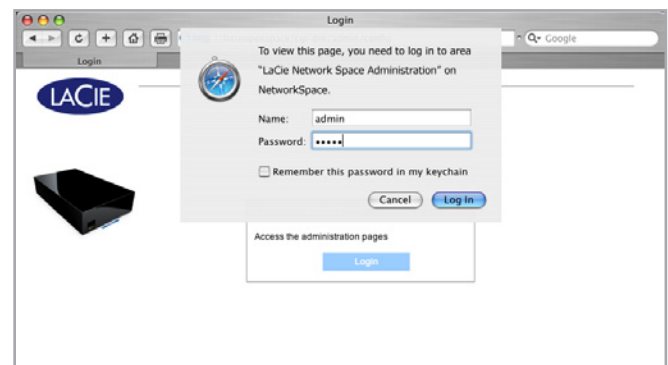


Figure 2.3-E

2.4. Configuring the LaCie Network Space on a Network Without a DHCP Server

Most home networking routers are DHCP servers, meaning the router assigns an IP address to all devices on the network to allow devices to find each other. If your network does not have a DHCP server, you may need to manually assign your LaCie Network Space an IP address and other network information.

The easiest way to modify your LaCie Network Space's network configuration is to use the LaCie Network Assistant. See section 2.3. [Connect with LaCie Network Assistant](#) for information on installing the network configuration software.

1. Start LaCie Network Assistant (see section 2.3. [Connect with LaCie Network Assistant](#)).
2. Windows Users: Click on the LaCie Network Assistant icon in the system tray and select **Configuration Window...** (Fig. 2.4-A). The LaCie Network Assistant Configuration window opens.

Mac users: Click on the LaCie Network Assistant icon in the menu bar and select **Network Configuration....** The LaCie Network Assistant Configuration window opens.
3. Click the Network tab.
4. Select **Manual**.



TECHNICAL NOTE: If the fields (IP address, Subnet mask, etc.) are filled when **Automatic (DHCP)** is selected, you do not need to make manual settings. Leave **Automatic** selected.

5. Modify the network settings to work with your network.
6. Click **Apply**.

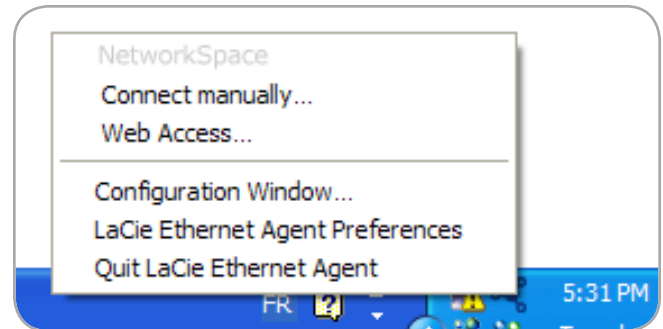


Fig. 2.4-A

2.5. Disconnecting the LaCie Network Space (Ethernet Connection)

Move the power switch to the **off** position. The system will shut down and power off. When the shutdown process is complete, you can safely remove the Ethernet cable. The shutdown process can take more than 30 seconds to complete. When the blue light turns off, the drive has shutdown.



IMPORTANT INFO: Any data transfers underway during a shut down will be interrupted and data may be lost. Make sure no users are connected or transferring data to or from the LaCie Network Space before shutting down.

3. Accessing and Managing Files

The LaCie Network Space has two permanent shares (similar to folders) – a password-protected share called “myshare” and a public one called “openshare” that anyone connected to the network can access. You can also connect an external hard drive to use as a backup for your LaCie Network Space or as additional storage. External drives appear as separate shares and are accessible by anyone on the network.

Use LaCie Network Assistant to access your shared folders for the first time.

3.1. Accessing Shared Folders

When your computer is connected to your local area network, LaCie Network Assistant will help you quickly connect to the shared folders (“myshare” and “openshare”) on your LaCie Network Space and, if you like, make those folders immediately available every time to you log on to your computer.

To access shared folders:

1. Open LaCie Network Assistant (LNA). Click on the LNA icon in the system tray (Windows users) or menu bar (Mac users).
2. Select **openshare** or **myshare** from the LNA menu. The list of shares will open in a Windows Explorer or Mac Finder window.



TECHNICAL NOTE: You may need to enter the username and password for “myshare.” The defaults are:

Username: admin
Password: admin

Your system may remember this information and might not ask for it during the same session. No password is required for “openshare.”

See section [4.2.6. Edit Accounts](#) for information on changing the User account information.

3. Simply drag and drop files to and from this window, just like a regular folder.

Access Summary

Admin Account

- ◆ Password can be modified
- ◆ Required to access myshare
- ◆ Required to access both myshare and openshare via FTP

User Account

- ◆ Username and password can be modified
- ◆ Required to access openshare via FTP

Myshare

- ◆ Admin login required locally and remotely via FTP

Openshare

- ◆ Accessible to any user on the local network with no login required
- ◆ User or admin login required for remote access via FTP

USB Share

- ◆ Accessible to any user on the local network with no login required
- ◆ User or admin login required for remote access via FTP

To Map Shared Folders (Windows Users)

1. In an Explorer window, in the menu bar, select **Tools** and then **Map Network Drive** (Fig. 3.1-A).
2. Select **MyShare**.
3. Repeat process for other shares.
4. You will then have access to your share from an Explorer window.

To Map Shared Folders (Mac OS X Users)

1. From the Apple icon in the menu bar, select **System Preferences > Accounts > Login Items**.
2. Drag the share's icon from your desktop into the list of applications (Fig. 3.1-B).
3. When you log on to the Mac OS, the share(s) will automatically mount on your desktop.



TECHNICAL NOTE: It is recommended to map MyShare first if you want to map both shares.

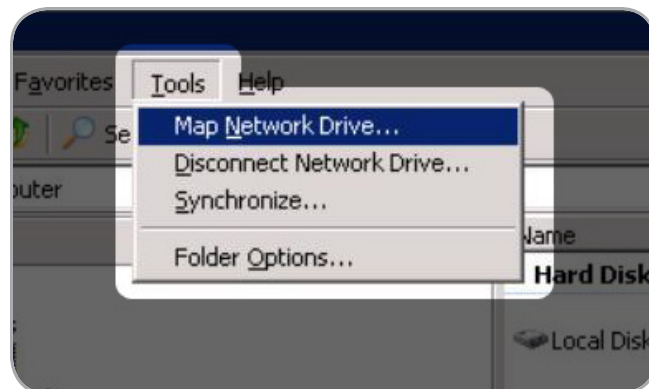


Fig. 3.1-A

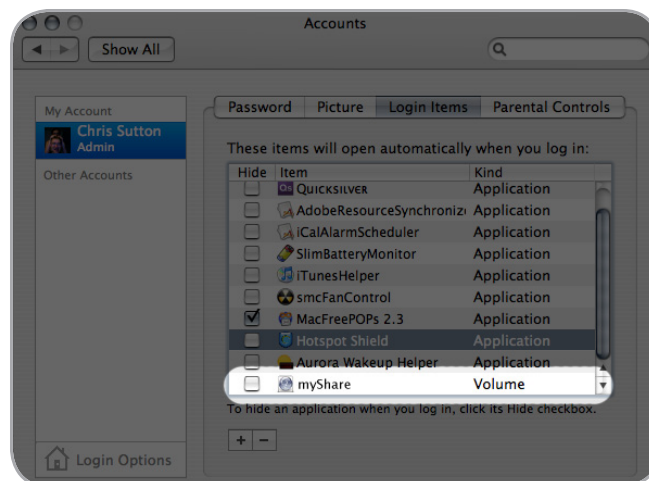


Fig. 3.1-B

3.2. Connecting External USB Hard Disks

You can connect an external USB hard disk or USB key to back up the data on your LaCie Network Space or as a way to add storage capacity. Connected hard disks are accessed similarly to shared folders.



TECHNICAL NOTE: External USB hard disks must be formatted in one of the supported systems to be compatible with the LaCie Network Space: FAT32, NTFS, EXT3, REISERFS or XFS.

To connect an external hard disk:

1. Connect to your LaCie Network Space.
2. Turn on the external hard disk and connect its USB cable to the USB port on the front of the LaCie Network Space.
3. In a few seconds, the disk should appear as a share in LaCie Network Assistant. To access the files on the hard disk, connect to it like a regular shared folder as described in section [3.1. Accessing Shared Folders](#).

3.3. FTP Access to Shares

The FTP protocol is used to transfer files from one computer to another through a network, such as over the internet. This protocol allows you to exchange files with your friends or relatives securely, as only people to whom you have provided the user name and password will have access. FTP access also provides you a way to access your files remotely.



TECHNICAL NOTE: By default, the username and password for FTP access is **ftp**.

These defaults can be modified, for details see [4.2.6. Edit Accounts](#).



IMPORTANT NOTE: The FTP service is disabled by default, to access your LaCie Openshare via FTP, enable the service as described in section [4.5.1. Enabling FTP Service](#).

To connect remotely via FTP, enter in your browser's address field:

<ftp://<username>:<password>@<ip or machine name>/>

Example: <ftp://admin:admin@networkspace/>

4. Administering Your LaCie Network Space

The LaCie Network Space features an easy-to-use Web-based tool for configuring the drive and administering users, referred to here as the NAS (Network Attached Storage) Administration Page.

Accessing the NAS Administration Page is easy using a browser or LaCie Network Assistant.

When you log in as “admin”, you will see a series of blue navigation links on the left side of the page (Fig. 4) to help you navigate and configure the LaCie Network Space:

- ◆ Section [4.1. Accessing the NAS Administration Page](#): Log in to your LaCie Network Space to make changes
- ◆ Section [4.2. Configuration](#): Make system settings, edit user accounts and turn the blue light on and off
- ◆ Section: [4.3. Backup](#): Back up data to an external hard disk or from an external hard disk to the LaCie Network Space
- ◆ Section [4.4. Disk](#): View LaCie Network Space disk information, attached external hard disk information and format the LaCie Network Space disk
- ◆ Section [4.5. Support](#): Enable/disable FTP access, restart the machine, rebuild and scan the media database, view/download/clear the system log and access documentation

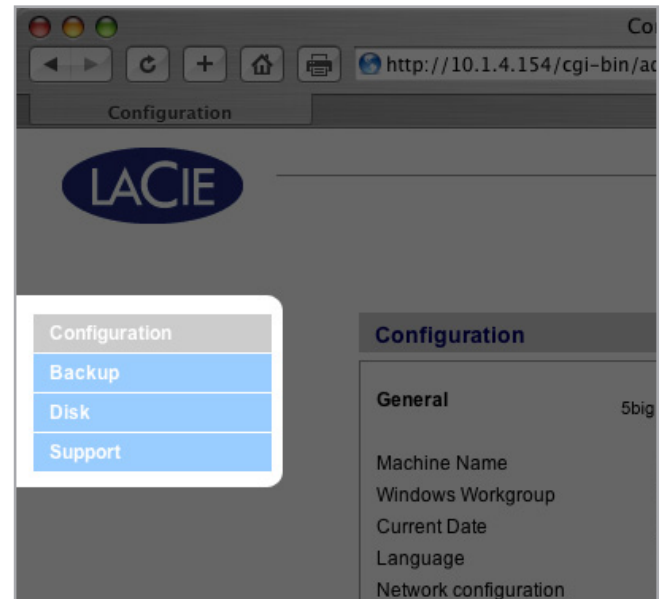


Figure 4

4.1. Accessing the NAS Administration Page

The NAS administration page can be accessed using LaCie Network Assistant or by entering the IP address or name of the LaCie Network Space in a browser.



NOTE: The IP address of your LaCie Network Space can be found by clicking on the Network tab of the LaCie Network Assistant network configuration window.

Use LaCie Network Assistant

1. Click on the LaCie Network Assistant icon in the system tray (Windows users) or menu bar (Mac users) and select **Web Access...**

The LaCie Network Space login page will open in a new browser window or tab. If your browser is not open, Network Assistant will open it for you.

2. Click **Login**.
3. In the login dialog enter:

Username: **admin**

Password: **admin**

Use Your Browser

1. Open your Internet browser (Firefox, Internet Explorer, Safari, etc.) and type the name of your LaCie Network Space in the browser's URL (web address) field. The default name of the LaCie Network Space is **Networkspace**.

http://Networkspace

2. Click **Login**.
3. In the login dialog enter:

Username: **admin**

Password: **admin**



IMPORTANT INFO: The login name and password are both set to "admin" by default. The admin password can be changed, but not the login name. See section [4.2.6. Edit Accounts](#) for more information.



Figure 4.1-A

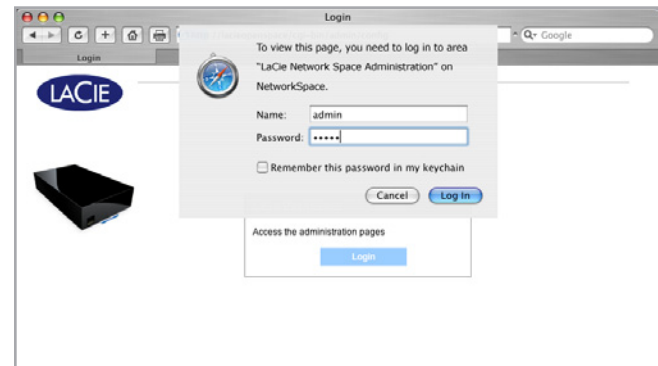


Figure 4.1-B

4.2. Configuration

The Configuration page (Fig. 4.2) displays basic information about your LaCie Network Space. You can modify any of the items on this page by clicking the corresponding oval “Modify” button on the right.

Read the following sections to learn more about each of the items on the Configuration page.

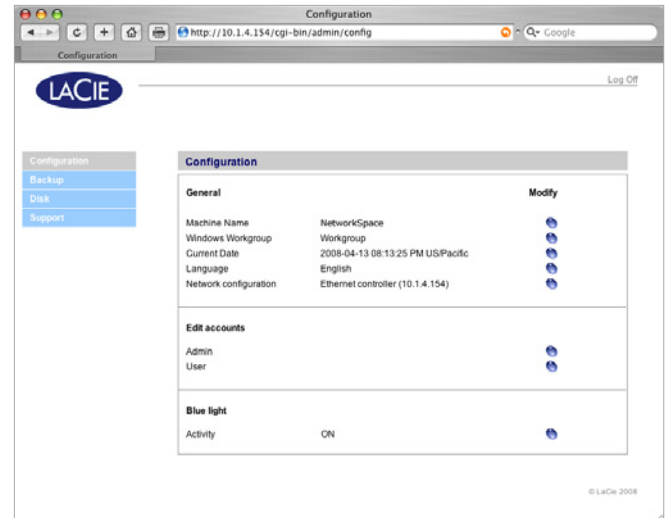


Figure 4.2

4.2.1. Machine Name

The Machine Name is the name of your LaCie Network Space on your network. You can use this name to log in to the NAS administration page by entering it in your browser’s URL field.

To modify the Machine Name:

1. Click the corresponding oval button on the Configuration page.
2. On the “Change machine name” page (Fig. 4.2.1), enter a new name in the **New machine name** field, following the guidelines stated below the field.
3. Click **Apply**.

Use this new machine name when accessing the LaCie Network Space with your browser’s URL field. Be sure to enter the name exactly as you did on the “Change machine name” page.

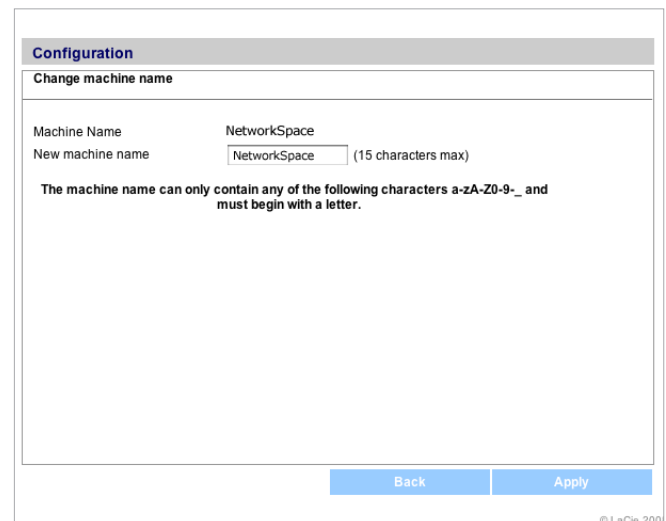


Figure 4.2.1

IMPORTANT INFO: Before changing the machine name, it is advised that all users disconnect from MyShare and OpenShare. Changing the machine name can take several minutes.

TECHNICAL NOTE: Changing the machine name will cause the language setting to revert to the default (English).

4.2.2. Windows Workgroup

Windows users can access the LaCie Network Space as a Windows workgroup computer. The Windows Workgroup listed on the LaCie Network Space must match the name of the Windows workgroup you want the LaCie Network Space to belong to.

To modify the Windows Workgroup:

1. Click the corresponding oval button on the Configuration page.
2. On the “Change Workgroup” page (Fig. 4.2.2), enter a new name in the **New workgroup name** field, following the guidelines stated below the field.
3. Click **Apply**.

The LaCie Network Space should now be accessible from **My Network Places > View Workgroup Computers > Network Space**.



NOTE: Mac users connected to a network with Windows computers can also access shares this way by selecting in the Finder **Network > [Workgroup] > networkspace** where “[Workgroup]” is the name of the Windows workgroup.

4.2.3. Date and Time

To modify the date and time of the LaCie Network Space:

1. Click the oval button corresponding to Current Date.
2. Set the time and date:
 - ◆ by entering them manually using the menus
 - ◆ by selecting one of the “Synchronize time from network” settings
3. Click **Apply**.

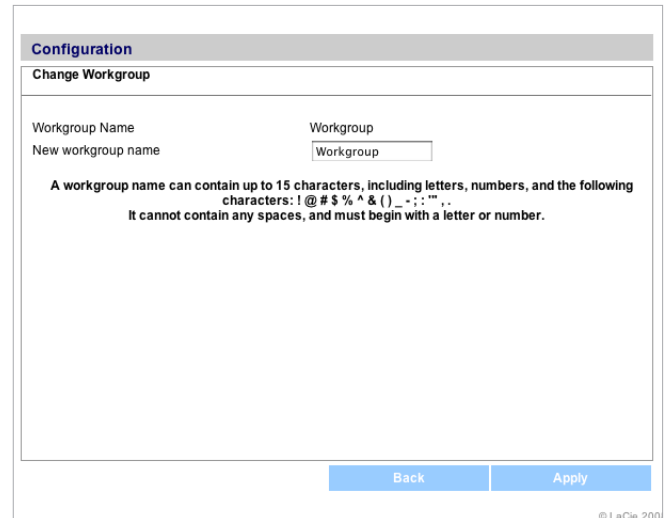


Figure 4.2.2

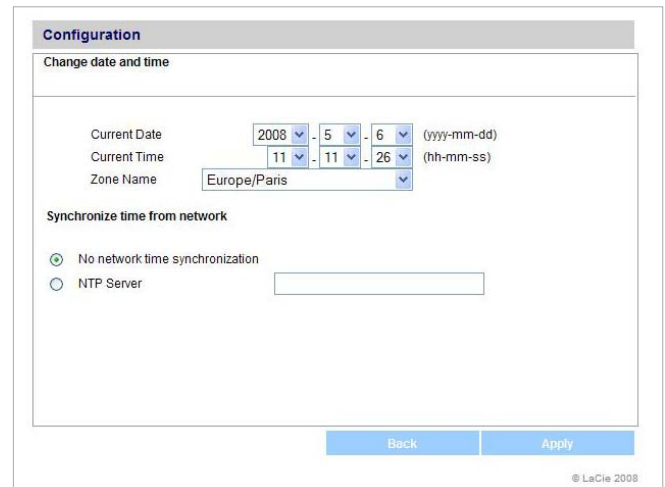


Figure 4.2.3

4.2.4. Language

To modify the LaCie Network Space admin page language:

1. Click the oval button corresponding to “Language” on the Configuration page.
2. On the “Select Language” page (Fig. 4.2.4), select a language from the dropdown menu.
3. Click **Apply**.

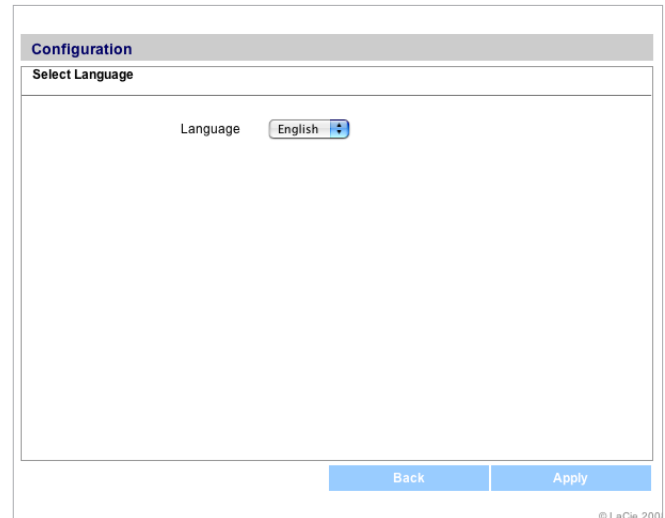


Figure 4.2.4

4.2.5. Network Configuration

If your LaCie Network Space is connected to a hub or switch that is not a DHCP server you can make network settings manually.



IMPORTANT INFO: Do not make changes to the settings on the Ethernet controller page if you are not familiar with their meanings. If the fields on the Ethernet controller page are filled when the “Obtain configuration from DHCP server” button is selected, you do not need to make changes.

To change network settings:

1. Click the oval button corresponding to Network Configuration on the Configuration page.
2. Click **Edit**.
3. Click the **Configure Manually** button and make changes according to the configuration of your network.
4. Click **Apply**.



TECHNICAL NOTE: Changing the IP address will cause the language setting to revert to the default (English).

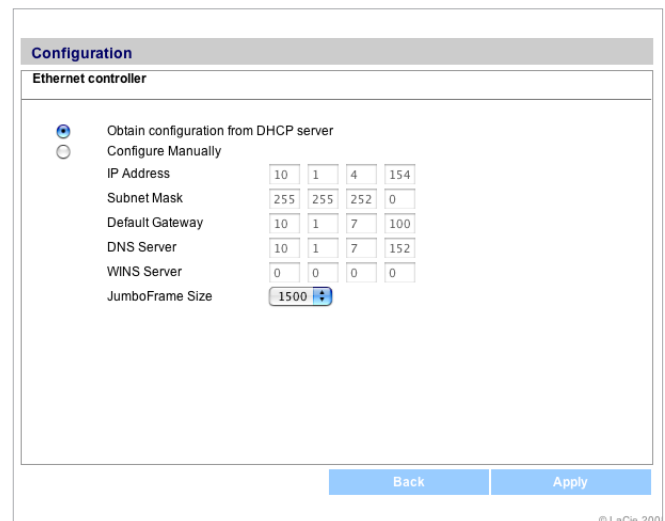


Figure 4.2.5

4.2.6. Edit Accounts

There are two “accounts” associated with your LaCie Network Space, each serving a different purpose. The Admin account login is used to make changes to the NAS administration page and to access your private Myshare. The User account is for users who want to remotely access the openshare via FTP (once FTP service enabled). See section [4.5.1. Enabling FTP Service](#).

The password of the Admin account can be changed, but not the username.

Both the username and password of the User account can be changed.

To change the Admin password:

1. Click the oval button corresponding to Admin under “Edit accounts.”
2. Enter the new password in the “New password” field, following the guidelines stated below the field.
3. Enter the password again in the “Confirm password” field.
4. Click **Apply**.



NOTE: When the admin password has been changed, the administration session is closed and you will need to log in again with the new password.

To change the User username and password:

This login must be provided to anyone who wants to access the LaCie Network Space remotely via FTP, and the administrator must enable the FTP service to make this user login usable. See section [4.5.1. Enabling FTP Service](#).



TECHNICAL NOTE: By default, the username and password for FTP and admin access is [ftp](#).

1. Click the oval button corresponding to User under “Edit accounts.”
2. Enter a new username and password in the corresponding fields, following the guidelines stated below the fields.
3. Enter the password again in the “Confirm password” field.
4. Click **Apply**.

Figure 4.2.6-A

Figure 4.2.6-B

4.2.7. Blue Light

The blue LED at the front of the LaCie Network Space can be turned off and on from the NAS administration page.

To turn the LED on and off:

1. Click the oval button corresponding to Activity.
2. If the light is on, click **Disable** to turn it off (Fig. 4.2.7-A), or if the light is off, click **Enable** to turn it on (Fig. 4.2.7-B).

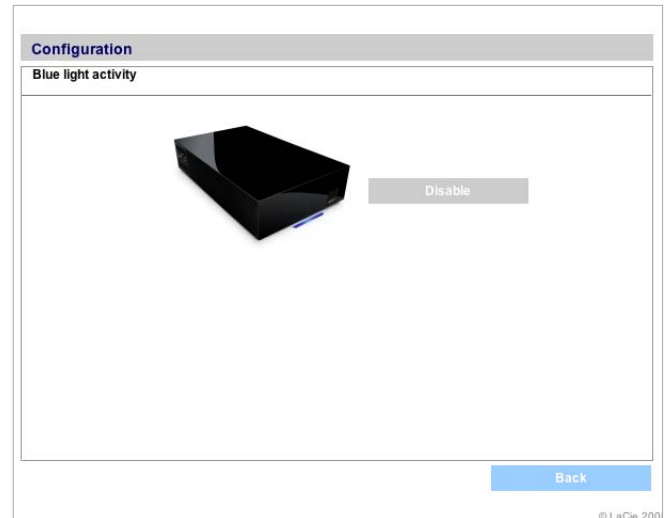


Figure 4.2.7-A

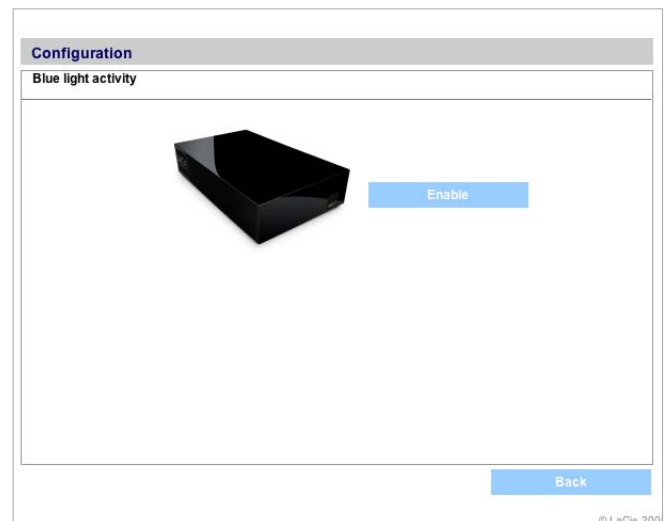


Figure 4.2.7-B

4.3. Backup

When an external USB hard disk is connected to your LaCie Network Space, you can perform manual, bidirectional backups of your files. Copy files from your LaCie Network Space to the external disk, or from the external disk to the LaCie Network Space.

To back up files:

1. Connect an external USB hard disk (see section 3.2. [Connecting External USB Hard Disks](#)).
2. Log in to the LaCie Network Space NAS administration page (see section 4.1. [Accessing the NAS Administration Page](#)).
3. Click **Backup** on the Configuration page (Fig. 4.3-A).
4. To copy files from the LaCie Network Space to the attached external disk, select **Source** from the menu on the left.

To copy files from the attached external disk to the LaCie Network Space, select **Destination** from the menu on the left.



NOTE: Each time you change the source/destination selection on the left, the Source/Destination label over the menu on the right changes to accommodate your selection.

5. Select the share you want to copy files to or from using the lower menu on the left.



TECHNICAL NOTE: If copying a share to an external disk, the entire contents of the share will be copied to a folder on the external disk with the same name as the share.

6. Select the attached external disk to copy files to or from using the menu on the right.
7. Click **Start**. An action bar will appear and the **Start** button will change to **Stop** (Fig. 4.3-C) while the backup is in progress. When the backup is complete, the button will change back to **Start**. Click **Stop** to end the backup, if necessary.

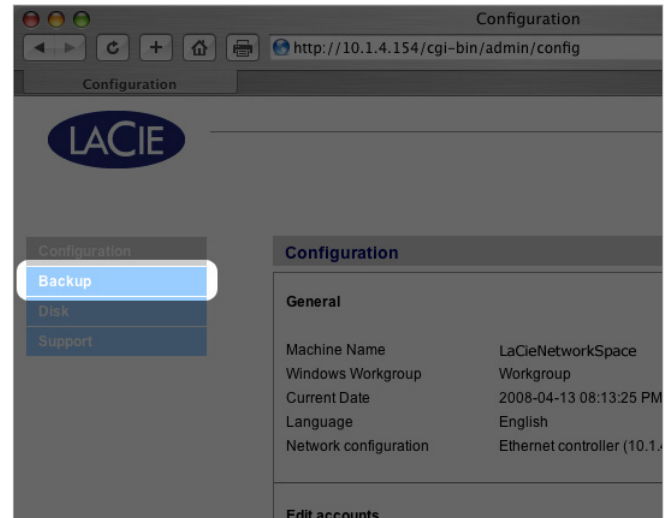


Figure 4.3-A

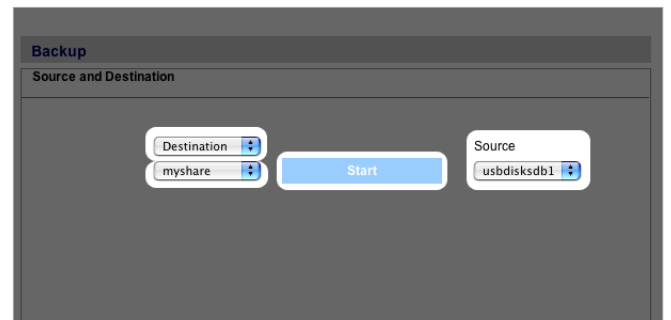


Figure 4.3-B

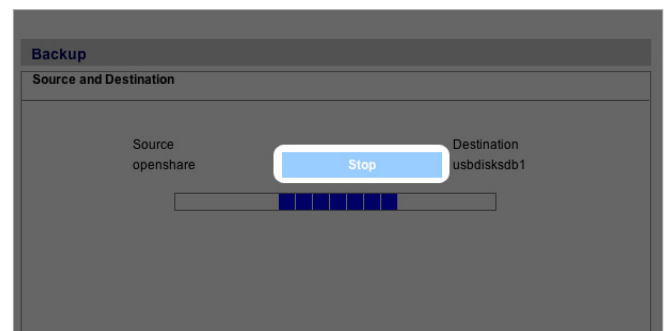


Figure 4.3-C

4.4. Disk

The Disk page of the LaCie Network Space NAS administration page gives you basic information about your LaCie Network Space disk and any attached external USB hard disks.

The total, used and available capacity of each disk is listed.

You can also use this page to format (erase) your LaCie Network Space disk and to safely remove an attached external USB disk before disconnecting the USB cable or USB key.

4.4.1. Formatting the LaCie Network Space Disk



CAUTION: Formatting the LaCie Network Space disk will destroy all data saved on the disk. Back up important data before formatting. Your Admin settings will be saved.

1. Log in to the LaCie Network Space NAS administration page (see section 4.1. [Accessing the NAS Administration Page](#)).
2. Click **Disk** on the Configuration page (Fig. 4.4.1-A).
3. Click **Format** under “LaCie Network Space drive.” Click **OK**.
4. Read the warning and click **Format** if you are sure you want to proceed. Click **OK**.
5. A progress window will open (Fig. 4.4.1-B). Do not close this window until the “The disk has been successfully formatted.” message appears (Fig. 4.4.1-C).
6. Click **Close Window**. The main Disk page will refresh and show the formatted capacity of the LaCie Network Space disk.

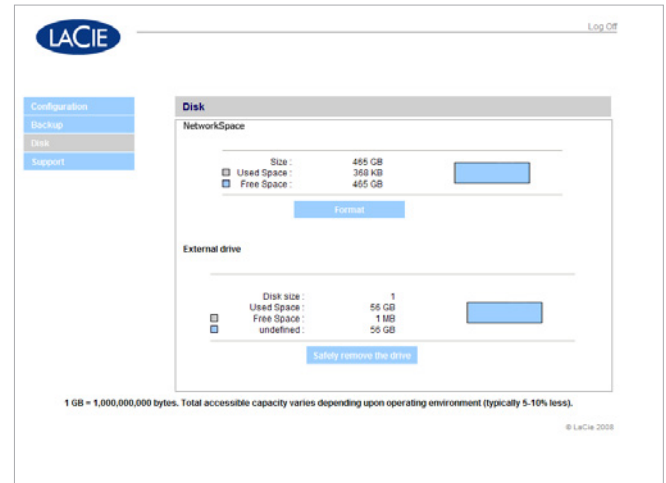


Figure 4.4.1-A

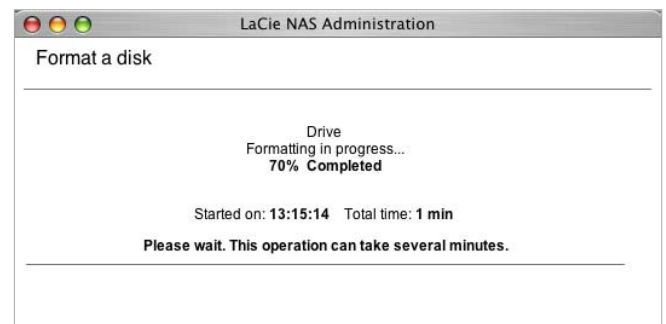


Figure 4.4.1-B



Figure 4.4.1-C

4.4.2. Safely Removing an Attached External Disk

1. Log in to the LaCie Network Space NAS administration page (see section 4.1. *Accessing the NAS Administration Page*).
2. Click **Disk** on the Configuration page (Fig. 4.4.2-A).
3. Click **Safely remove the drive** under “External drive.” Click **OK**. A progress window will appear (Fig. 4.4.2-B).
4. Click the **Close Window** button (Fig. 4.4.2-C) when it appears. It is now safe to disconnect the external disk’s USB cable or USB key from the LaCie Network Space.

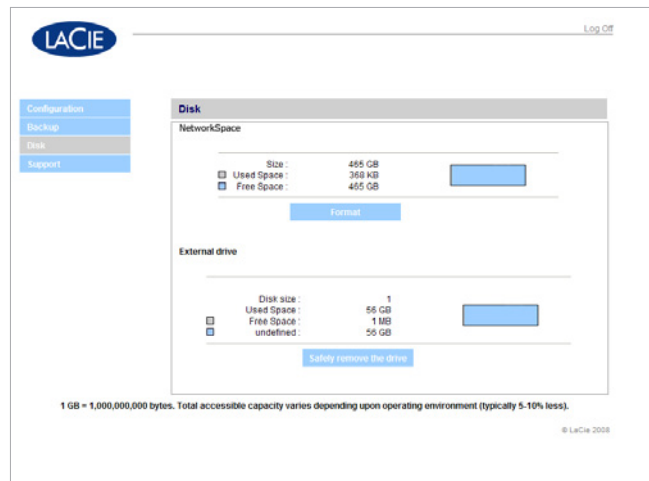


Figure 4.4.2-A

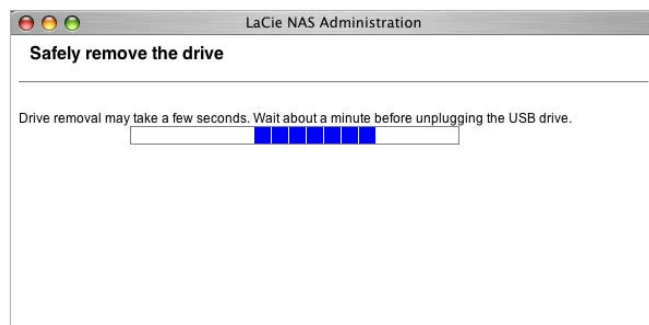


Figure 4.4.2-B

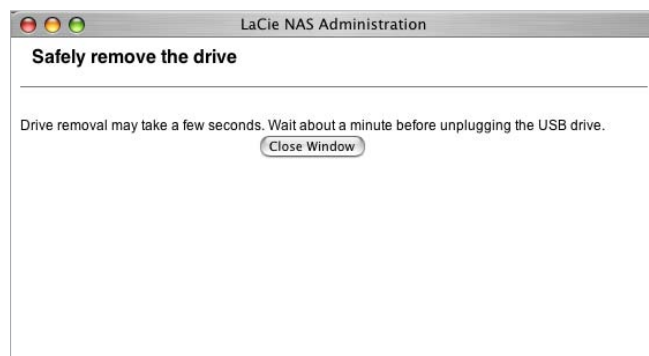


Figure 4.4.2-C

4.5. Support

The Support page of the NAS administration page displays the current LaCie Network Space software version number, allows you to enable/disable FTP service, scan or rebuild the media server database, view/download/clear the system log, link to LaCie’s support web site and restart the machine.

4.5.1. Enabling FTP Service

FTP service enables you to access the LaCie Network Space from any computer connected to the Internet using either the Admin or User login information (for details, see the chart under section 3. [Accessing and Managing Files](#)).

If you prefer to connect to your LaCie Network Space using an FTP client, you can enable FTP connection by clicking **Enable** under “Software.” Click **Disable** to turn off the FTP service. See Fig. 4.5.1.



TECHNICAL NOTE: By default, the username and password for FTP access is **ftp**. These defaults can be modified, for details see [4.2.6. Edit Accounts](#).

4.5.2. Media Server

Your LaCie Network Space also includes UPnP AV media server functionality, allowing you to play your music or videos from any UPnP AV-certified player connected to the local network.

Scan the Media Server Database

The LaCie Network Space automatically scans “openshare” once per hour for media files. These files then appear in the list of playable files on UPnP AV devices.

You can perform a manual scan at any time to cause UPnP AV devices to immediately detect media files stored in the “openshare” by clicking **Scan** on the Support page.

Rebuild the Media Server Database

Your LaCie Network Space should appear in iTunes under “Shared” (Fig. 4.5.2). Any iTunes-compatible files on your LaCie Network Space should appear in the library when your LaCie Network Space is selected. If files do not appear in the iTunes library, click **Rebuild** on the Support page (Fig. 4.5.1) to refresh the list.

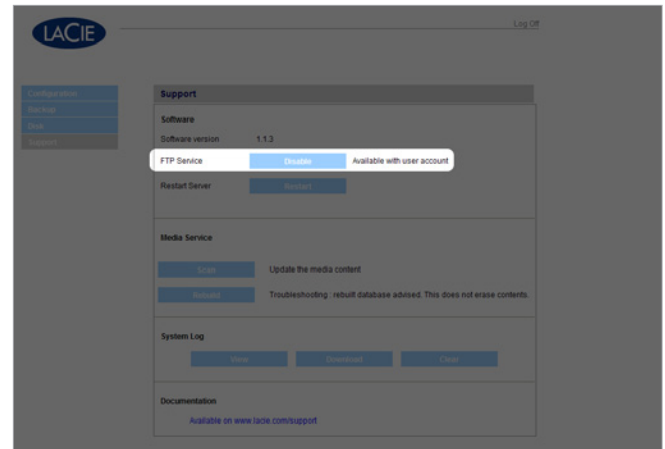


Figure 4.5.1

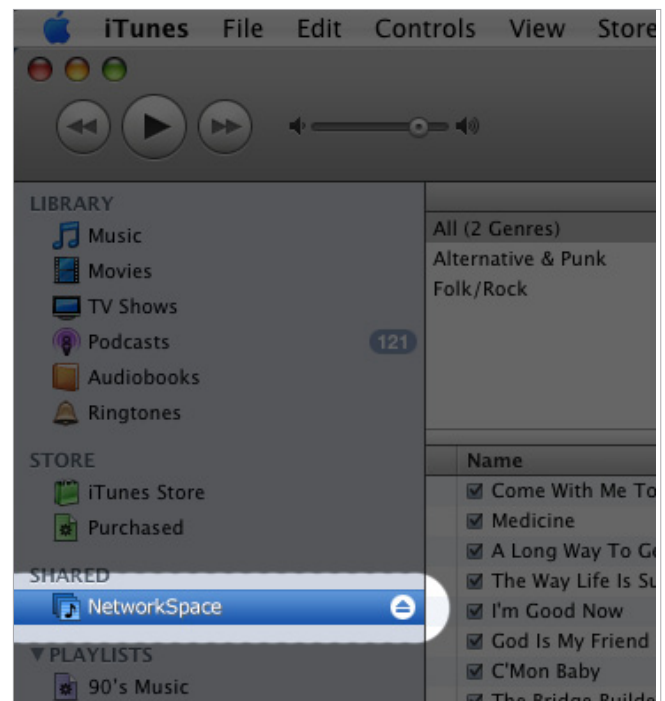


Figure 4.5.2

4.5.3. System Log

If you are experiencing problems with your LaCie Network Space, customer support may ask you to view or download the System Log to help identify the issue.

4.5.4. Restarting the Machine

If you need to restart your LaCie Network Space, click **Restart** on the Support page. Click **OK**.



NOTE: If a “server has shut down” message appears, don’t panic. This is a normal part of the restart process.

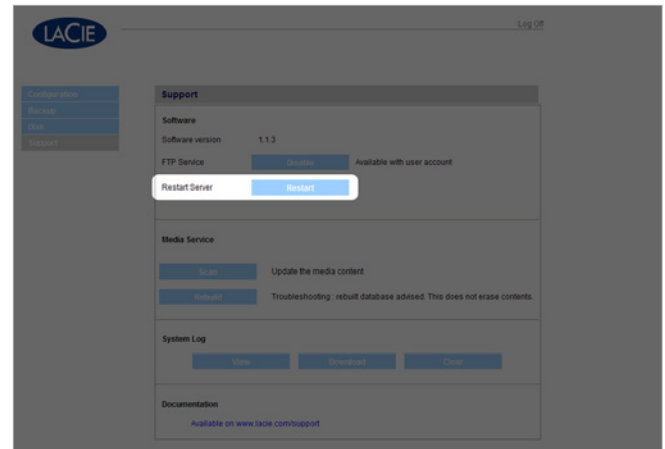


Figure 4.5.3

5. Troubleshooting

In the event that your LaCie Network Space is not working correctly, please take a look at the Troubleshooting section on the following pages and at the FAQs published on our web site – www.lacie.com. One of these FAQs may provide an answer to your specific question. You can also visit the downloads page, where the most recent software updates will be available – www.lacie.com/support/downloads.

If you need further assistance, please contact your LaCie reseller or LaCie Technical Support (see section 6. [Contacting Customer Support](#) for details).

System Log

The system log allows you to review the type, date, time, source and event ID of activities on the LaCie Network Space. For more information, refer to chapter 4.5.3. [System Log](#)

Manual Updates

LaCie strives to give you the most up-to-date, comprehensive user manuals possible. It is our goal to provide you with a friendly, easy-to-use format that will help you quickly install and utilize the many functions of your new device.

If your manual does not reflect the configurations of the product that you purchased, please check our website for the most current version available.

www.lacie.com

Problem	Question to Ask	Solution
The system is not recognized by the computer.	Does your computer's configuration meet the minimum system requirements?	Check section for more information.
	Is the system's power supply connected and is the blue light on the front of the drive on?	Make sure that the power supply is properly connected (see section 2.1. Turn the Drive On for details); that the system has been powered on by moving the power switch on the back of the device to the ON position; and that the outlet the power supply is connected to is powered on or has a sufficient supply of power.
	Is the blue light on the front of the device flickering?	If the blue light is flickering or will not turn on, the power supply may be defective. Please contact your LaCie reseller or LaCie Customer Support.
	Did you follow the correct installation steps?	Review the installation steps (section 2. Setting Up Your LaCie Network Space).
	Are both ends of the Ethernet cable firmly connected?	Disconnect the Ethernet cable, wait 10 seconds and then reconnect. Ensure that the interface connectors are properly aligned. The Ethernet cable can only be inserted one way. Make sure it is correctly oriented. Check that the Ethernet connectors are straight and fully seated in the Ethernet ports.

Problem	Question to Ask	Solution
The system doesn't appear on the network.	By default the LaCie Network Space is configured to retrieve its IP address from a DHCP server. If your network is managed by a DHCP server and you cannot access your LaCie Network Space, try checking your DHCP server's log. To get the IP address, run LaCie Network Assistant, which is located on the LaCie Storage Utilities CD-ROM. If your network is NOT managed by a DHCP server, the LaCie Network Space uses its default IP address, which is 192.168.xx.100. To change this IP address, use LaCie Network Assistant.	
	Is the IP address properly set?	For more information, please see section 3. Accessing and Managing Files .
	Is your network DHCP enabled?	If your network is DHCP enabled, please refer to sections 2.3. Connect with LaCie Network Assistant . If your network is not DHCP enabled, you will need to manually configure the address; please see section 2.4. Configuring the LaCie Network Space on a Network Without a DHCP Server .
I cannot map MyShare.	Did you already map OpenShare?	Mapping OpenShare first can prevent the ability to map MyShare due to the login requirement. To solve this problem, 1) Unmap OpenShare in an explorer window; 2) map MyShare; finally, 3) map OpenShare.
A user does not have FTP access to the LaCie Network Space.	Has the administrator provided the correct User login?	In order for anyone to access the LaCie Network Space using FTP, three conditions must be met: 1) the administrator must provide the correct user login (username: ftp and password: ftp by default or the modified login) and the IP address of the LaCie Network Space; 2) the LaCie Network Space must be turned on and connected to the network; and 3) FTP service must be enabled (for details, see section 4.5.1. Enabling FTP Service).
I cannot see the media files stored in the LaCie Network Space on my UPnP AV media player or adapter.	Has the database been refreshed?	A refresh of the database is done automatically once per hour. If you want to enjoy new content immediately you can refresh the database of media files by clicking the Scan button on the Support page of the administration pages.
	Are the media files stored on the "openshare"?	UPnP AV devices will only discover media files stored on "openshare." Files stored in "myshare" are not accessible to UPnP devices.
The USB drive connected to my LaCie Network Space won't mount on my computer.	Is the capacity of your USB drive more than 2 TB?	Drives with a capacity greater than 2TB cannot be connected to the LaCie Network Space.
I've noticed a delay in accessing the shares.	Are you transferring multiple files simultaneously?	Access to a share can slow down during simultaneous file transfers.

6. Contacting Customer Support

Before You Contact Technical Support

Read the User Manual and review the Troubleshooting section.

Try to isolate the problem. If possible, make the drive the only external device on the CPU, and make sure that all of the cables are correctly and firmly attached.

If you have asked yourself all of the pertinent questions in the troubleshooting checklist, and you still can't get your LaCie drive to work properly, contact us via the contacts on the following page. Before contacting us, make sure that you are in front of your computer and that you have the following information on hand:

Information	Where to Find Information
LaCie Network Space serial number	Located on a sticker at the back of drive or on the original packaging
LaCie Network Space file format	<p>Mac users: Select the hard drive icon and press Command + I, or press the Control key and choose Get Info.</p> <p>Windows users: Right click the hard drive icon and select Properties.</p>
Macintosh/PC model	<p>Mac users: Click on the Apple icon in the menu bar and select About this Mac.</p> <p>Windows users: Right click My Computer and select Properties > General.</p>
Operating system version	
Processor speed	
Computer memory	
The brands and models of other internal and external peripherals installed on my computer	<p>Mac users: Click on the Apple icon in the finder bar and select About this Mac. Select More Info... The Apple System Profiler will launch and will list your internal and external peripherals.</p> <p>Windows users: Right click My Computer and select Properties > Hardware.</p>

6.1. LaCie Technical Support Contacts

LaCie Asia, Singapore, and Hong Kong Contact us at: http://www.lacie.com/asia/contact/	LaCie Australia Contact us at: http://www.lacie.com/au/contact/
LaCie Belgium Contact us at: http://www.lacie.com/be/contact/ (Français)	LaCie Canada Contact us at: http://www.lacie.com/caen/contact/ (English)
LaCie Denmark Contact us at: http://www.lacie.com/dk/contact	LaCie Finland Contact us at: http://www.lacie.com/fi/contact/
LaCie France Contact us at: http://www.lacie.com/fr/contact/	LaCie Germany Contact us at: http://www.lacie.com/de/contact/
LaCie Italy Contact us at: http://www.lacie.com/it/contact/	LaCie Japan Contact us at: http://www.lacie.com/jp/contact/
LaCie Netherlands Contact us at: http://www.lacie.com/nl/contact/	LaCie Norway Contact us at: http://www.lacie.com/no/contact/
LaCie Spain Contact us at: http://www.lacie.com/es/contact/	LaCie Sweden Contact us at: http://www.lacie.com/se/contact
LaCie Switzerland Contact us at: http://www.lacie.com/chfr/contact/ (Français)	LaCie United Kingdom Contact us at: http://www.lacie.com/uk/contact/
LaCie Ireland Contact us at: http://www.lacie.com/ie/contact/	LaCie USA Contact us at: http://www.lacie.com/contact/
LaCie International Contact us at: http://www.lacie.com/intl/contact/	

7. Warranty Information

LaCie warrants your drive against any defect in material and workmanship, under normal use, for the period designated on your warranty certificate. In the event this product is found to be defective within the warranty period, LaCie will, at its option, repair or replace the defective drive. This warranty is void if:

- ◆ The drive was operated/stored in abnormal use or maintenance conditions;
- ◆ The drive is repaired, modified or altered, unless such repair, modification or alteration is expressly authorized in writing by LaCie;
- ◆ The drive was subjected to abuse, neglect, lightning strike, electrical fault, improper packaging or accident;
- ◆ The drive was installed improperly;
- ◆ The serial number of the drive is defaced or missing;
- ◆ The broken part is a replacement part such as a pickup tray, etc.
- ◆ The tamper seal on the drive casing is broken.

LaCie and its suppliers accept no liability for any loss of data during the use of this device, or for any of the problems caused as a result.

LaCie will not, under any circumstances, be liable for direct, special or consequential damages such as, but not limited to, damage or loss of property or equipment, loss of profits or revenues, cost of replacement goods, or expense or inconvenience caused by service interruptions.

Any loss, corruption or destruction of data while using a LaCie drive is the sole responsibility of the user, and under no circumstances will LaCie be held liable for the recovery or restoration of this data.

Under no circumstances will any person be entitled to any sum greater than the purchase price paid for the drive.

To obtain warranty service, call LaCie Technical Support. You will be asked to provide your LaCie product's serial number, and you may be asked to furnish proof of purchase to confirm that the drive is still under warranty.

All drives returned to LaCie must be securely packaged in their original box and shipped with postage prepaid.



IMPORTANT INFO: Register online for free technical support: www.lacie.com/register

Free Manuals Download Website

<http://myh66.com>

<http://usermanuals.us>

<http://www.somanuals.com>

<http://www.4manuals.cc>

<http://www.manual-lib.com>

<http://www.404manual.com>

<http://www.luxmanual.com>

<http://aubethermostatmanual.com>

Golf course search by state

<http://golfingnear.com>

Email search by domain

<http://emailbydomain.com>

Auto manuals search

<http://auto.somanuals.com>

TV manuals search

<http://tv.somanuals.com>