

Hydraulic Driven Parallel Arm Rotary Cutter.

RCP26 SERIES

75 - 150 HP — 60"

Min. tractor weight - 8,000 lbs.

Reach of 15'6" horizontal, 11'5" vertical,

9'1" below ground level

All boom rotary cutters are not created equal. The Land Pride Parallel Arm Rotary Cutter has a unique name for a reason. **Designed to "reach out" and cut along roadsides, over guard rails, down ditchbanks and along side ponds, the parallel arm cutter has features not found on your typical boom cutter.**

First of all, it has a constant attitude! When the two cylinders that operate the two arm sections are activated, the attitude of the deck does not change; thanks to the parallel arm design. Lift the cutter head up, in or out to negotiate an obstacle, and your cutter deck position does not change; set the cutter head down at the same attitude as it was prior to the obstacle. **This makes your work efficient!**

The hydraulic breakaway feature of the parallel arm cutter is also not found on your standard boom cutter. When an immovable obstacle is hit with the cutter deck, instead of swinging the tractor around in a dangerous whip, the cutter deck and arms pivot to the rear, allowing you time to stop, or at least help the cutter deck pass the obstacle. You simply restore the cutter deck to its original position with the help of a hydraulic cylinder. You can also swing the cutter deck rearward enabling you to mow into a tight corner, again putting it back to its original setting with the hydraulic cylinder.

The cutter deck is operated by a hydraulic motor, which is run by a pump powered by the PTO of the tractor. A flow control valve is standard equipment to protect the hydraulic system of the cutter from the high GPM many of the newer tractors now utilize. The 35 gallon oil reservoir keeps the unit running cool, and the in-line filter continually cleans the oil each time it is returned to the reservoir.

The optional electronic package enables each of the arm and deck hydraulic cylinders to be activated by a toggle switch. You get instant response from the cylinder, which can be very difficult with the tractor's hydraulic controls.



Moving this cutter up and around obstacles, in and out next to water or roadsides is what this cutter is all about. Save time and work efficiently with the boom mower that does more!

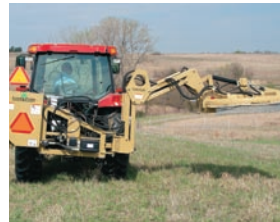


In-line filter cleans hydraulic fluid before it re-enters reservoir.

- 540 or 1000 RPM
- Cat. 2 & 3
- 10' Transport width
- 35 Gallon oil reservoir also serves as counterweight
- 2" Cutting capacity
- Front and rear chain guards
- 3/16" Stump jumper protects deck from obstructions
- Auxiliary weight rack on left side for balance
- Oil pressure gauge
- Hydraulic Outlets Needed: Max. 4 Min. 1
- Optional screen for tractors without cabs
- Optional gauge wheel deck



Optional gauge wheel deck allows the cutter to float over undulations without having to constantly monitor terrain conditions.



Hydraulic breakaway feature pivots arm backward to avoid obstacles and protect cutter arm. Hydraulically pivots back into place.



Flow control valve compensates for various hydraulic systems.



Shut-off valve permits maintenance without oil loss.



Cylinder shear-bolt breakaway for frame protection.



Grease zerks at all pivot points.



Electronic cylinder controls provide instant response for adjustments on the go.

3 Foot longer reach than the RCP26 Series.

RCP30 SERIES

95 - 175 HP — 60"

Min. tractor weight - 12,000 lbs.

Great for those roadsides that want a manicured look further down the ditch, or being able to stay a little further away from the soggy banks of the pond.

- 540 or 1000 rpm
- Cat 2 & 3
- Horizontal cutting reach of 18'10"
- Hydraulic break away and reset
- Case drain deck motor



Free Manuals Download Website

<http://myh66.com>

<http://usermanuals.us>

<http://www.somanuals.com>

<http://www.4manuals.cc>

<http://www.manual-lib.com>

<http://www.404manual.com>

<http://www.luxmanual.com>

<http://aubethermostatmanual.com>

Golf course search by state

<http://golfingnear.com>

Email search by domain

<http://emailbydomain.com>

Auto manuals search

<http://auto.somanuals.com>

TV manuals search

<http://tv.somanuals.com>