

RANGE ROVER

QUICK START GUIDE



Vehicle access	2
Comfort and safety	4
Climate control	8
Exterior lighting	9
Facia overview	10
Wipers and washers	11
On-road and off-road	12
Rear seat entertainment	15
Audio system	16
Navigation and telephone systems	18
Gas station information	20

Some of the information in this guide may not apply to your vehicle.

You must refer to your Owner's Handbook for full operating instructions.



Vehicle access

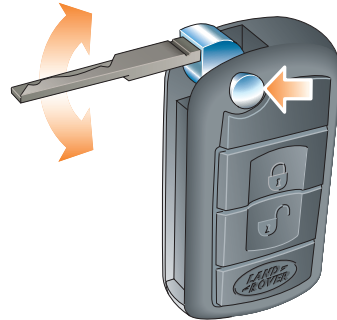
Remote control

Two remote controls, with integral keys are supplied with your vehicle. The type of remote control supplied will vary according to vehicle specification.

Type 1



Type 2



Key blade

Press button (arrowed in illustration) to release the key blade.

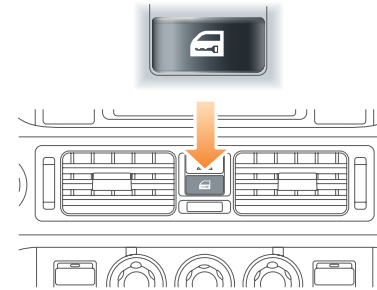
Type 1	Type 2	
		<ul style="list-style-type: none"> Press once to lock all doors and activate the alarm. Press and hold to close all doors, windows and sunroof.
		<ul style="list-style-type: none"> Press once to unlock the driver's door and to deactivate the alarm (single point entry). A second press will unlock all the other doors. Press and hold to open all doors, windows and sunroof.
		<ul style="list-style-type: none"> Press to unlock the taildoor and deactivate the interior space protection only. Press and hold to activate the panic alarm.

Single point entry

This is a security feature that unlocks only the driver's door. It can be disabled on all remote controls, or on an individual remote control, by a Land Rover Dealer.

Central locking

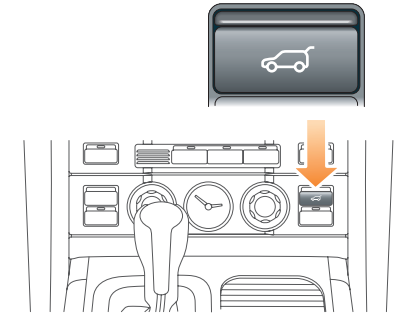
Master locking switch



Press the master locking switch to lock or unlock all the doors. Pressing this switch will not enable the alarm.

If the locks have already been locked using the remote control, the switch will not release the locks.

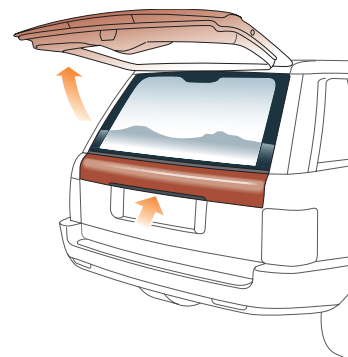
Taildoor release switch



If single point entry has been used and only the driver's door is unlocked, the taildoor can be opened by pressing the release switch.

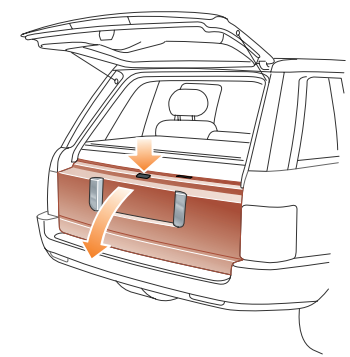
Taildoor

Opening the upper taildoor



With all doors unlocked, press the switch on the bottom edge of the upper taildoor and lift to open.

Opening the lower taildoor

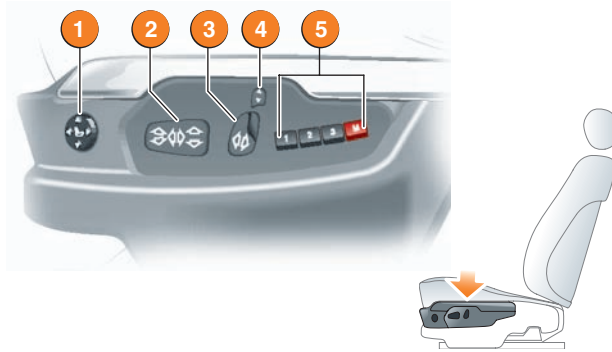


With the upper taildoor open, press the release switch on the top of the lower taildoor, then lower the taildoor.

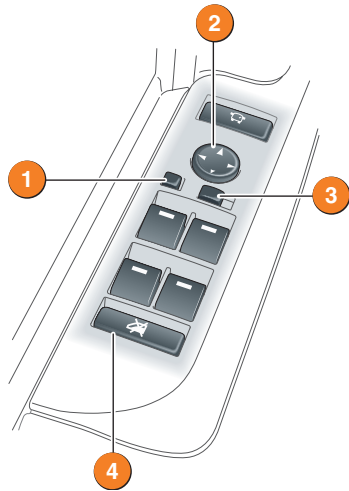
Comfort and safety

Driver's seat adjustment

1. Lumbar support switch.
2. Seat fore/aft, cushion height and cushion angle switch.
3. Seat back switch.
4. Head restraint switch.
5. Driving position memory controls.



Door mirrors and electric windows



Door mirrors

To adjust the door mirrors, move the mirror selector switch **3** left or right to select the appropriate mirror. Use the four-way switch **2** to adjust the position.

Powerfold mirrors (when fitted)

The door mirrors are designed to fold back to enable the vehicle to negotiate narrow openings.

Press the mirror fold button **1** to fold the mirrors back.

Press this button again to return the mirrors to the normal position.

Electric windows

The windows are fitted with a facility that allows them to be fully opened or closed with a single operation.

To open a window, fully press the respective window switch.

To close a window, pull the respective window switch fully upwards.

The rear window controls can be inhibited by pressing button **4**.

Resonance with lowered windows

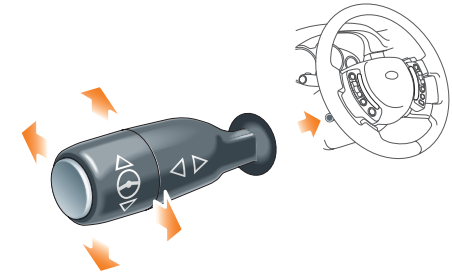
If a resonance/booming sound occurs when a rear window is open, lowering an adjacent front window about 25 mm (1 inch) will eliminate the condition. Press the window switch lightly to lower the window and release when the window reaches the required position.

Steering column adjustment

The steering column adjustment stalk is located on the left hand side of the steering wheel.

The steering wheel position can be adjusted in four directions, corresponding with the movement of the adjustment stalk.

With the vehicle stationary, move the stalk up and down to adjust the height, and forward or rearward to move the steering wheel further away or closer.



Driving position memory



If button **1**, **2** or **3** is not pressed within seven seconds of the **M** button being pressed, the memory function will cancel.

Once you have adjusted the driver's seat, steering column and exterior mirrors for your ideal driving position, the vehicle can memorise these settings for future use.

1. Press the **M** button to activate the memory function. The button will illuminate to indicate the memory function is active.

2. Press button **1**, **2** or **3** to store the current driving position to the chosen number.

With the driver's door open, you can recall a stored seat position with a press of the appropriate button; **1**, **2** or **3**. The seat, steering wheel and mirrors will move to their preset positions.

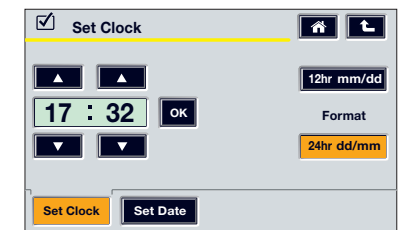
If the driver's door is closed, turn the starter switch to position **I** before pressing the seat memory button.

Clock setting



To set the time, press the system settings button.

From the system settings screen, touch the **Clock** icon to access the **Set Clock** screen.



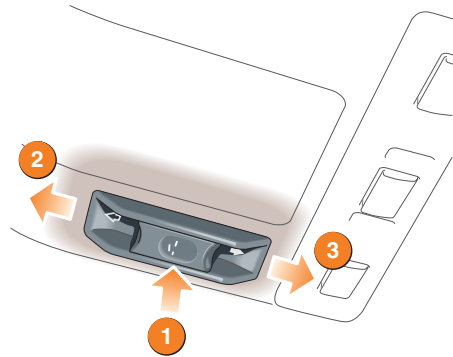
Comfort and safety

Sunroof

Sunroof operation

The sunroof is fitted with an anti-trap mechanism, which will open the sunroof slightly if resistance is encountered during closing.

1. Press to tilt the sunroof.
2. Push rearward to open the sunroof.
3. Push forward to close the sunroof.



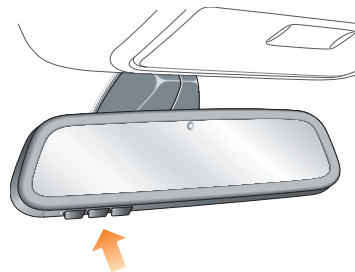
Switch operation

The sunroof switch has two forward and rearward positions. In the first position the sunroof will open or close until the switch is released. To open or close the sunroof fully in a single operation, push the switch fully forward or rearward to the second position.

Homelink® transmitter

The buttons (arrowed in illustration) can be programmed to transmit radio frequencies that can operate external devices i.e. garage doors, entry gates, security systems, etc.

For more information, refer to **Land Rover Homelink®** in the Owner's Handbook.



Seat belts and child restraints



A warning light on the instrument pack will illuminate to alert you that the driver's and passenger's seat belt is unbuckled.

Recommended child seat

Land Rover strongly recommends the use of LATCH (Lower Anchors and Tethers for Children) child seats.

The LATCH child seat can only be fitted in the outer rear seating positions.

Passenger air bag



The front passenger seat is fitted with an occupancy sensor system that determines the state of seat occupancy and sets the status to suit:

- Seat unoccupied - air bag deactivated and indicator off.
- Seat occupied - air bag activated and indicator off.
- Seat occupied by a child seat or low weight object - air bag deactivated and indicator on.

For further information, refer to Occupant detection in the Owner's Handbook.

Operating note

If the indicator becomes permanently illuminated when the seat is definitely empty, please contact your Land Rover Dealer immediately.

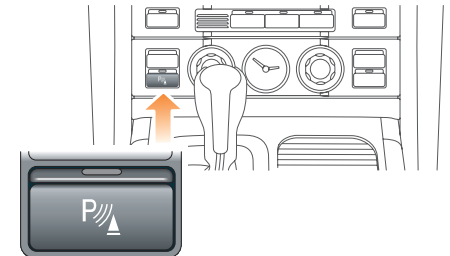
Parking aid

With the ignition on, the front and rear parking aid are activated whenever reverse gear is selected. A short confirmation tone will sound after one second.

If an obstruction is detected by the sensors, an intermittent tone will sound. As the vehicle moves closer to the obstruction the intermittent tone increases in frequency.

When the distance between the sensor and the obstruction is less than approximately 30 cm (1 foot), the tone becomes continuous.

The parking aid is automatically switched off when the vehicle's forward speed exceeds 32 km/h (20 mph).



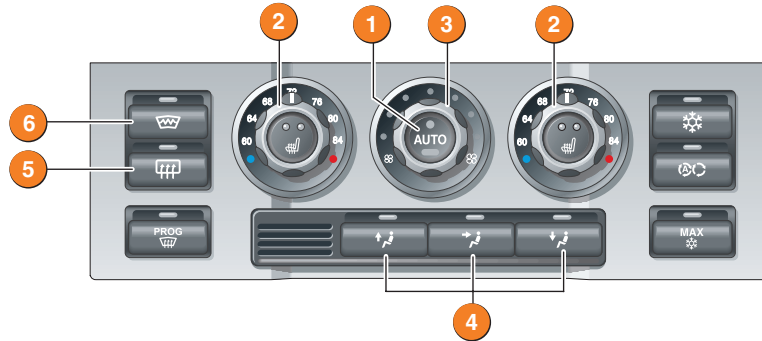
Front parking aid - manual operation

When driving into a limited space, the front parking aid can be manually activated by pressing the switch on the fascia. The switch will illuminate and a short confirmation tone will sound.

Climate control and exterior lighting

Climate control

The following provides a brief overview of the basic functions of the climate control system.



Recommended mode

Select **AUTO** as the normal operating mode. This will help prevent window misting.

1. AUTO (automatic) mode

Press to select automatic operation of the climate control system. The system will automatically adjust the heat output, blower speed, air intake and airflow distribution so as to maintain the selected temperature(s) and reduce misting without constant adjustments from the driver or passengers.

2. Temperature control

Rotate the controls to set the required temperature for the corresponding side of the passenger compartment.

3. Blower Control

Rotate clockwise to increase and anticlockwise to decrease airflow from the vents.

4. Air distribution

More than one setting can be selected at once.

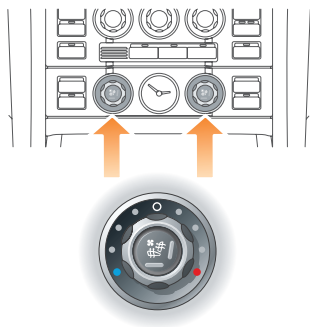
5. Heated rear screen

6. Heated front screen

External water deposits

The air conditioning system removes moisture from the air and deposits the excess water beneath the vehicle. Puddles may form but this is normal and no cause for concern.

Climatic seats



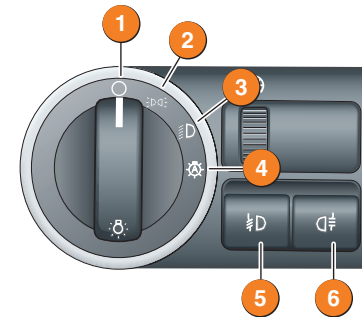
Rotate to start the climatic seat function and to adjust the temperature of the airflow.

Press once to ventilate the seat back only. Press a second time to switch the climatic seat function off. A third press will ventilate the seat back and seat cushion.

Operating note

Climatic seats consume considerable power from the battery. For this reason, they should only be operated while the engine is running.

Exterior lighting



1. Exterior lamps off

2. Side lamps

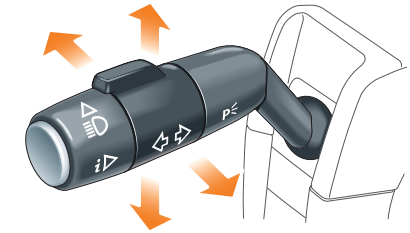
3. Headlamps

4. Autolamps

With the switch in Autolamps mode and the engine running, a sensor monitors the exterior light levels and will automatically switch the side lamps and dipped headlamps ON and OFF as required.

5. Front fog lamps

6. Rear fog lamps



Direction indicators



Move the lever up or down to activate the direction indicators.

Moving the lever up or down against spring pressure and then releasing will flash the indicators three times. Useful for lane changing.

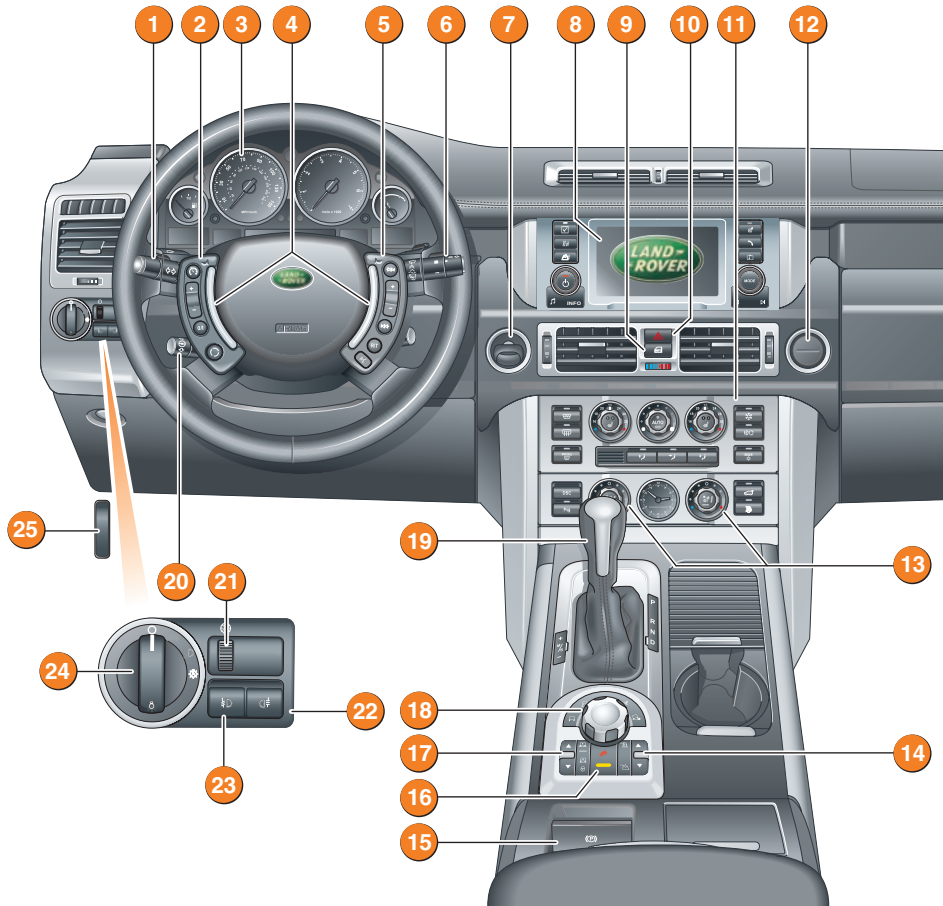
Headlamp high beam



Push the lever away from you to select headlamp high beam. A warning indicator will illuminate on the instrument pack.

To flash headlamps, pull the lever part way towards the steering wheel and release.

Facia overview

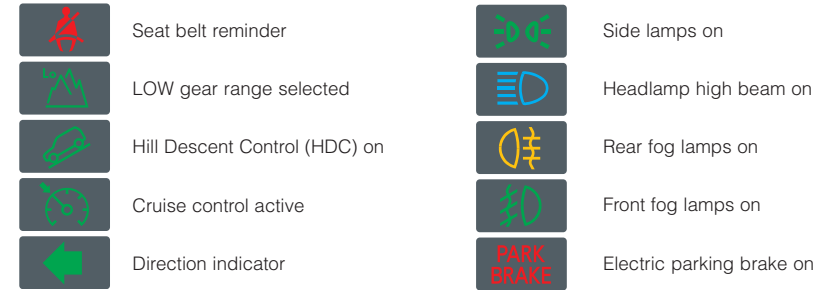


- 1 Headlamps/direction indicator/trip computer switch
- 2 Cruise control switches
- 3 Instrument pack and message centre
- 4 Horn switches
- 5 Audio/telephone controls
- 6 Wiper/washer switch
- 7 Starter switch
- 8 Touch screen and controls
- 9 Master locking switch
- 10 Hazard warning lamp switch
- 11 Heater/air conditioning controls
- 12 Upper and lower glovebox release
- 13 Climatic seat controls

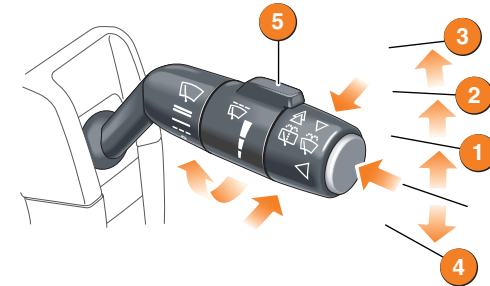
- 14 Transfer gearbox switch
- 15 Electric parking brake
- 16 Hill descent control switch
- 17 Air suspension controls
- 18 Terrain response control
- 19 Gear selector
- 20 Steering column adjustment lever
- 21 Dimmer control
- 22 Rear fog lamps
- 23 Front fog lamps
- 24 Exterior lamps master switch
- 25 Hood release

Warning indicators (information)

The following will illuminate during normal driving to indicate that a particular system or feature is operating. If any other warning indicator illuminates, refer to **Quick Start** in the Owner's Handbook.



Wipers and washers



1. Intermittent wipe or rain sensor operation
2. Normal speed wipe
3. Fast speed wipe
4. Single wipe
5. Rotate collar to adjust the speed of the intermittent wipe or sensitivity of the rain sensor.

Rear wiper and washer



Push the lever forwards to the first position to operate the rear wiper. Push to the second position to operate the rear washers. The lever will return to the first position when released.

Pull the lever back to switch off the rear wiper.

Windshield wiper

Press and release the button on the end of the lever to operate the windshield washer.

Press and hold the button to operate washers and wipers.

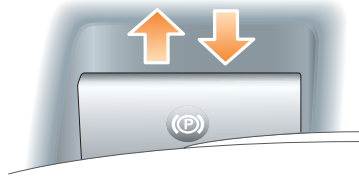
	Intermittent wipe	Rain sensor
	Short delay.	Most sensitive to rain.
	Long delay.	Least sensitive to rain.

Care Point

Before entering an automatic car wash, turn the wipers off to deactivate the rain sensor. Otherwise, the wipers will operate during the car wash program and may be damaged.

On-road and off-road

Electric parking brake



Applying

- With the vehicle stationary, pull up the parkbrake lever and then release it. The red warning indicator in the instrument pack will illuminate.

Releasing

- The starter switch must be in position **I** or **II**. Apply the foot brake and press down on the parkbrake lever.
- If the vehicle is stationary with the electric parking brake applied and either **D** (Drive) or **R** (Reverse) selected, pressing the accelerator will automatically release the parking brake.

Transmission

Gearshift interlock

The starter switch must be in position **II** and the foot brake applied before the gear selector can be moved from **P** to **R**.

Also, the selector release button must be pressed when moving between **P** and **R**.

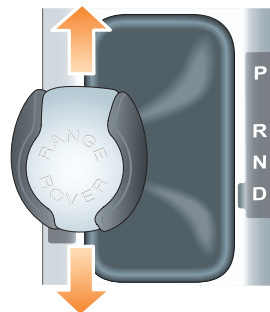
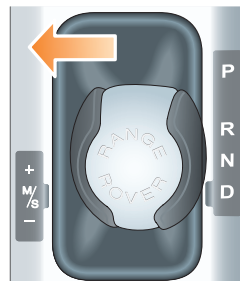
Sport Mode

To select sport mode, move the gear selector from the **D** position towards the left hand side of the vehicle. The word **SPORT** will appear in the message centre and the **M/S** LED on the gear selector surround will illuminate. To cancel sport mode, return the gear selector to the **D** position.

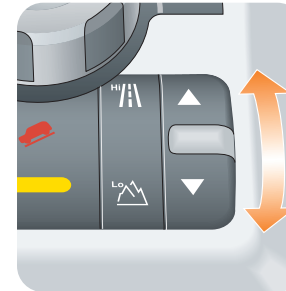
Manual CommandShift™ gear selection

With the gear selector in sport mode, a single forward movement of the gear selector will change the transmission to a higher gear. A rearward movement will change down to a lower gear. Repeated forward and rearward movements of the lever can be made until the desired gear ratio has been selected.

To deselect manual mode, move the gear selector back to the **D** position.



Transfer gearbox



HIGH range should be used for all normal road driving and also for off-road driving across dry level terrain.

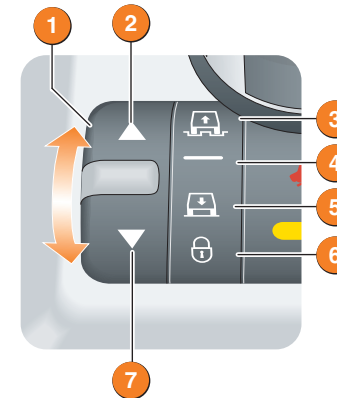


LOW range should be used in situations where low speed manoeuvring is necessary, or in extreme off-road conditions.

Range changing

The recommended method for range changing is with the vehicle stationary. With the engine running, and the main gearbox in **N** (Neutral), press and release the front/rear of the transfer gearbox switch to select the range required. When range changing is complete a chime will sound and a message will be displayed on the message centre.

Air suspension



Vehicle height can be manually adjusted via the raise/lower switch **1**. Height changes may only be made when the engine is running and the driver and passenger doors are closed.

Indicators **2** or **7** will illuminate to show the direction of movement. They extinguish when the height change movement is completed.

Off-road height **3**, provides improved ground clearance and approach, departure and break-over angles.

On-road height **4**, is the normal height for the vehicle.

Access height **5**, lowers the vehicle to provide easier entry, exit and loading of the vehicle. This position may be selected up to 40 seconds after the starter switch is turned off.

Crawl (locked at Access height) **6**, allows the vehicle to be driven at low speeds at access height, to give increased roof clearance.

Vehicle height will be automatically adjusted according to road speed in order to maintain driveability and handling.
If Terrain Response is fitted, some of its programs will automatically adjust the suspension height.



Access height may be selected directly by the access button on the driver's door panel.

On-road and off-road

Terrain response system




The Terrain Response system, if fitted, is always active and cannot be switched off. When the vehicle is started the system will normally start in its **General** program.


Manual selection of a special program, by rotating the knob, will provide benefits in how the vehicle can be driven over different surfaces or terrains by automatically adjusting the vehicle's drive and suspension systems.


It is recommended that a special program be engaged whenever driving conditions could become difficult, and cancelled once the conditions for use are no longer present.


Wading


When wading through water, select the program suitable for the surface beneath the water. The maximum depth of the water should not exceed 700 mm (27.5 inches).

General
 Suitable for surfaces that match typical road surfaces.

Grass-Gravel-Snow
 Suitable for surfaces which are firm but have a slippery surface, e.g. grass, snow, loose gravel, pebbles or icy conditions.


Mud-Ruts
 Suitable for soft, muddy, uneven or deeply rutted ground. It is recommended that LOW range is selected on the Transfer gearbox.

Sand
 Suitable for soft, predominantly dry, yielding sandy ground, e.g. sand dunes and deserts. If the sand is damp or wet, the Mud-Ruts program may be more beneficial.

Rock Crawl
 Only selectable when the transfer gearbox is in LOW range. Suitable for crossing wet or dry, solid unyielding ground requiring high levels of wheel displacement, e.g. clusters of boulders or rocky river beds.

Hill descent control

Hill Descent Control (HDC) operates in conjunction with the anti-lock braking system to provide greater control in off-road situations particularly when descending severe gradients.

 Press the switch (arrowed in illustration) to select HDC. HDC can be selected at speeds below 80 km/h (50 mph) but will not be fully active until the vehicle speed reduces below 50 km/h (30 mph), confirmed by a continuously illuminated HDC indicator on the instrument pack.

Press the switch again to deselect HDC.

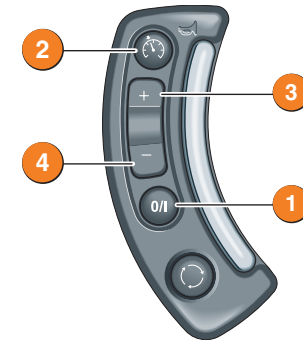


Cruise control

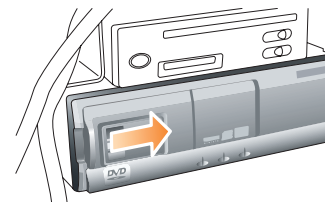
- Master button** - to activate/deactivate the cruise control system.
- Resume button** - to resume a set speed retained in memory.
- + Accelerate/Set button** - to set the road speed to be maintained or increase the speed in 2 km/h (1mph) steps when cruise control is operating.
- Decelerate button** - to decrease the speed in 2 km/h (1mph) steps when cruise control is operating.

Brake pedal override

Cruise control will automatically disengage when the brake pedal is pressed or when the vehicle speed falls below 32 km/h (20 mph).



Rear Seat Entertainment (RSE)



Loading a disc

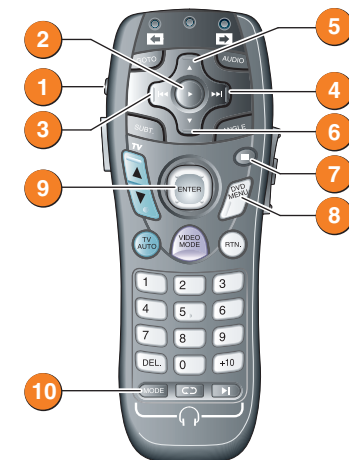
The RSE system has a six disc auto-changer located in the left-hand side of the luggage compartment. The auto-changer is capable of playing DVD, video and audio discs.

- Remove access cover.
- Slide open the door on the auto-changer and press button to eject the disc cassette.
- Insert discs into cassette (label side up).
- Re-insert cassette into auto-changer and close door.

Playing a disc using the remote control

Use the slider on the back of the remote control to select either the left or right RSE.

- Press and release button to turn the system on or off.
- Play the currently selected disc.
- Previous chapter or search backwards.
- Next chapter or search forwards.
- Previous disc.
- Next disc.
- Press once to pause playback. Press again to stop playback.
- DVD menu.
- DVD navigation. Move left, right, up or down. Press to select
- Press to change the audio source being listened to. Ensure **RSE** is selected to listen to the audio for the video source being viewed.

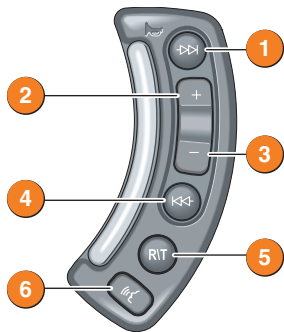


Audio system

Audio system controls



1. Press to access system settings.
2. Press for Navigation functions.
3. Telephone button.
4. Audio and video button.
5. Press to access Audio mode and rotate to select Radio, CD, TV, or AUX.
6. Press to scroll through preset radio stations or to skip CD/MP3 tracks.
7. Briefly press to set Traffic Information on or off. Press and hold for two seconds to set News Information.
8. Press to access the sound settings menu rotate control to adjust.
9. Press to switch the audio unit on or off and rotate to adjust the volume.
10. Press for Off-road information.
11. Press for On-road information.



Steering wheel controls

1. Press and release to scroll through preset radio stations or CD/MP3 tracks. Press and hold for two seconds to search up for the next radio station or to advance through the CD/MP3 track.
2. Press to increase volume.
3. Press to decrease volume.
4. Press and release to scroll through preset radio stations or CD/MP3 tracks. Press and hold for two seconds to search down for the next radio station or to reverse through the CD/MP3 track.
5. Press to switch between audio and telephone mode.
6. Press to activate the voice recognition feature.

Radio operation

Select **Radio** from the Audio mode menu. When in radio mode, touch the **Band** icon 1 repeatedly until the required waveband is selected (e.g. FM, MW, AM depending on market).

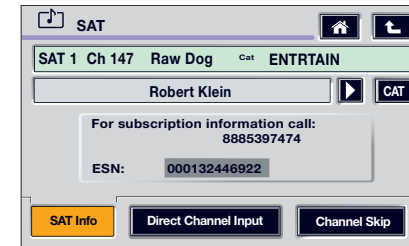
Storing radio stations

Touch the FM settings icon 2 to access the tuning screen. With the **Tuning** tab selected, touch the **Auto Store** icon to automatically store the 9 strongest signals. Repeat this process for all wavebands.

To manually store a selection of radio presets, refer to the Owner's Handbook.



Satellite radio



In order to activate and use the satellite radio, you will need to call the satellite radio service provider (Sirius) and provide them with the Electronic Serial Number (ESN) of your audio unit.

To view the ESN:

1. Repeatedly touch the **Radio-SAT** icon to select the **SAT** mode.
2. Touch the icon to display the ESN.

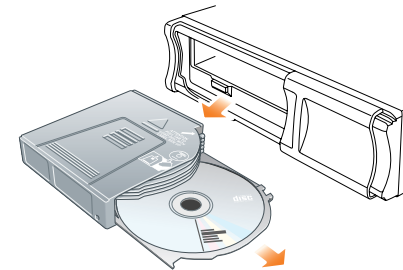
The telephone number for Sirius will be displayed when viewing the ESN.

CD operation

CD auto-changer

The CD auto-changer is located in the upper glovebox.

1. Open the auto-changer door, press the **EJECT** button and remove the magazine. Close the door.
2. Pull a tray out from the magazine and insert a CD/MP3 disc (label side up). Slide tray into magazine until a click is heard.
3. Open the auto-changer door and ensuring correct orientation, replace the magazine. Ensure that it clicks into position.



Care point

Remember to close the auto-changer door this will prevent dirt getting into the unit and help reduce skipping.

Playing CD/MP3 discs

Select **CD** from the Audio menu. When in CD mode, the system will load the discs in the magazine. Once complete, the display will show a list of loaded CD/MP3 discs, and start playing the first disc.

Playback can be paused by touching the icon. Press again to resume playback.



When an MP3 disc is selected, the folder information is displayed in an additional folders, touch the and on-screen icons.

CD selection

Touch the appropriate CD icon 1 to 6 on the screen to select a disc from the auto-changer.

Once selected, playback automatically commences and progresses sequentially through all of the loaded discs in the magazine.

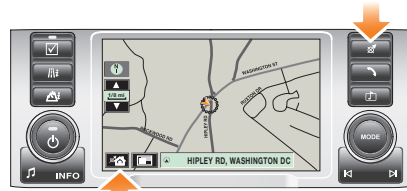
Navigation and telephone systems

Navigation

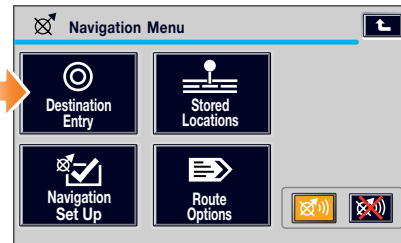
The screen allows touch-control of the navigation system. Only a light touch is required to operate the function, excess pressure on the screen could result in damage. On initial activation, ensure that both the correct country and area have been selected.

Setting a destination

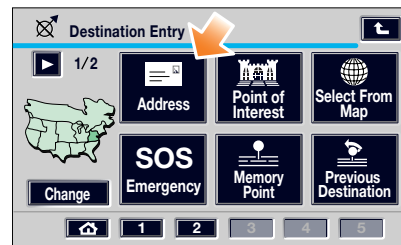
To set a destination and start using the navigation system, use the following procedure:



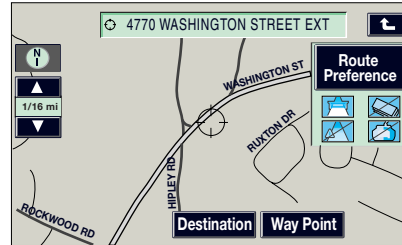
1. Press the **Navigation** button on the display surround, and when prompted, touch **Agree** to access the initial Home menu.
2. Touch the **Home** icon on the screen to access the navigation menu.



3. Touch the **Destination Entry** icon.



4. Touch the **Address** icon, then enter details using the on-screen keypad. Touch **OK** to enter.



5. Once found, the screen displays the destination. To change the route settings, touch **Route Preference**, or touch **Destination** to start the route calculation.

Route preferences

When set, route preferences are remembered and used for calculating all new routes. If you encounter problems with the type of routes being selected or the guidance being given, please check the route preferences.

6. Once calculated, the screen highlights the route. Touch **3 Routes** to select an alternate route, or touch **Start** to start navigation. Drive away, following the voice guidance.

Touch the audible repeat icon to hear the last voice instruction again.

When your destination is reached, voice and visual confirmation is given.

Touch the **Home** icon, select **Route options**. **Cancel guidance** and touch **Yes** to confirm.

Telephone – Bluetooth system

Mobile phones with Bluetooth capability can communicate with the vehicle's inbuilt telephone feature.

The following procedure demonstrates how to connect the most popular brands of mobile phone.

Pairing a handset to the vehicle's system

Prepare the mobile phone for pairing to the system. See the telephone manufacturer's instructions for further details, or follow the table below for generic commands.

	Nokia	Motorola	Ericsson
1	Select Menu	Select Menu	Select Menu
2	Select Settings	Select Settings	Select Connectivity
3	Select Bluetooth OR Connectivity then Bluetooth	Select Connection	Select Bluetooth
4	Select On	Select Bluetooth link	Select My Devices
5	Select Search for audio devices	Select Hands-free	With New Device highlighted, select Add. Press OK to confirm
6	After search, select Land Rover	Select Look for devices	After search, select Land Rover
7	Enter pass code 2121. Press OK to confirm.	After search, select Land Rover	Select Connect
8	No connection? Select Bluetooth (Menu) then Paired devices Land Rover	Permission to bond? Select Yes, and enter pass code 2121	Enter pass code 2121 after prompt

When the handset has been successfully paired to the system, **Bluetooth** will appear on the Phone menu screen.

Telephone echo

If an echo is experienced when using the telephone, reduce the volume on the audio system.

Telephone number list

The list of telephone numbers programmed into a paired Bluetooth handset cannot be viewed on the touch screen. This function is only available with docked handsets.

Bluetooth selection

If more than one paired Bluetooth phone is in range, then the system will automatically select the last phone used.

Mobile phone compatibility

There are a number of mobile phones that have been tested to function correctly with the Land Rover system, however not all mobile phones are compatible. For the latest list of compatible phones and software versions, please refer to www.ownerinfo.landrover.com. Alternatively consult your Dealer.

Non-approved handsets cannot be guaranteed to operate reliably.

Making a call

1. With a paired or docked handset, select **Phone** from the Home screen, or press the button on the screen surround.
2. Enter the required telephone number using the on-screen keypad.
3. Touch on the screen, or press the button on the steering wheel control to send.

Receiving a call



To answer or end a call, touch on the screen, or press on the steering wheel control.

Gas station information

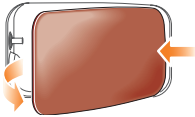
Fuel filling

Fuel filler cap location



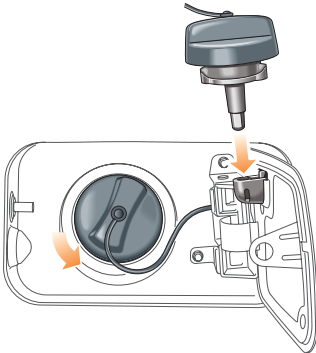
A small arrow on the fuel gauge indicates which side the fuel filler flap is located.

Fuel filler flap opening



The fuel filler flap can only be opened when the vehicle is unlocked. Press the fuel filler flap to open.

Docking the filler cap



The filler cap is secured to the vehicle by a strap. For your convenience a holder is provided on the flap to store the cap whilst refuelling.

Fuel specification

The correct fuel specification for your vehicle is shown on the inside of the fuel filler flap.

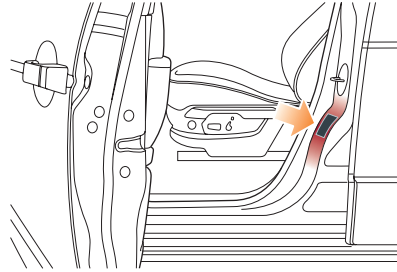
Equipment necessary for use of fuels containing more than 10 per cent ethanol is not fitted to this vehicle.

Do not use E85 fuels (85 per cent ethanol content). If E85 fuels are used serious engine and fuel system damage will occur.

Tire pressures

Tire information label

The correct tire pressures are shown on the pillar behind the driver's door.



TIRE PRESSURE REMINDER

For your convenience, record the tire pressures specific to your vehicle.

Front

Rear

Free Manuals Download Website

<http://myh66.com>

<http://usermanuals.us>

<http://www.somanuals.com>

<http://www.4manuals.cc>

<http://www.manual-lib.com>

<http://www.404manual.com>

<http://www.luxmanual.com>

<http://aubethermostatmanual.com>

Golf course search by state

<http://golfingnear.com>

Email search by domain

<http://emailbydomain.com>

Auto manuals search

<http://auto.somanuals.com>

TV manuals search

<http://tv.somanuals.com>